



500 SERIES MODEL 5470 TRUCK CRANE

LIFT RATINGS

With 47H Tubular Chord Boom and "M-M" Counterweight (20,000 lb)

Boom Lgth.	Radius In Feet	Boom Angle Degrees	Free Ratings		Outriggers Extended & Set		Feet From Boom Point
			Over Side	Over Rear	Over Side	Over Rear	
40 feet	11	80.5	0	97530	130000	130000	46
	12	79.0	0	85360	128610	130000	46
	15	74.6	42740	61870	106730	115270	45
	20	67.0	29400	42100	86000	88500	43
	25	58.8	22140	31680	63690	71010	41
	30	49.9	17620	25260	47670	54320	37
	35	39.5	14530	20900	37940	43340	32
	40	25.8	12260	17720	31380	35930	24
50 feet	13	80.1	47860	75670	119440	130000	56
	15	77.7	42390	61740	106640	115180	55
	20	71.8	29230	41940	85690	88160	54
	25	65.6	21980	31530	63670	70700	52
	30	59.1	17460	25110	47620	54270	49
	35	52.0	14380	20760	37880	43280	46
	40	44.2	12110	17580	31300	35840	41
	50	22.9	9030	13280	23010	26460	26
60 feet	14	80.8	44640	67890	111880	121860	66
	15	79.8	42040	61570	106120	114630	66
	20	74.9	29050	41770	85310	87780	64
	25	69.9	21800	31350	63610	70350	63
	30	64.7	17290	24940	47540	54180	61
	35	59.2	14230	20600	37790	43190	58
	40	53.4	11950	17420	31190	35740	55
	50	40.1	8860	13110	22890	26340	45
60	20.8	6890	10370	17900	20680	28	
70 feet	16	80.5	38870	56150	100560	107780	75
	20	77.1	28910	41630	84960	87760	75
	25	72.9	21660	31220	63560	70300	73
	30	68.5	17160	24810	47470	54110	72
	35	64.0	14110	20490	37730	43130	69
	40	59.3	11820	17290	31110	35650	67
	50	49.2	8730	12980	22790	26240	59
	60	37.0	6790	10270	17820	20610	49
70	19.2	5390	8330	14450	16780	29	
80 feet	17	80.9	35680	51550	95920	101800	85
	20	78.7	28680	41410	84570	87340	85
	25	75.1	21440	31010	63460	69920	84
	30	71.3	16950	24610	47360	54000	82
	35	67.5	13920	20300	37600	43000	80
	40	63.5	11630	17100	30970	35510	78
	50	55.1	8530	12790	22630	26080	72
	60	45.8	6610	10090	17670	20450	64
70	34.5	5200	8150	14300	16630	52	
80	17.9	4160	6720	11880	13880	31	
90 feet	19	80.7	30490	44130	87810	91270	95
	20	80.0	28450	41190	84490	86930	95
	25	76.8	21220	30790	63350	69510	94
	30	73.5	16740	24400	47220	53860	93
	35	70.1	13710	20100	37460	42850	91
	40	66.7	11430	16900	30820	35360	89
	50	59.5	8320	12580	22460	25910	84
	60	51.7	6420	9900	17510	20300	77
70	43.0	5010	7950	14130	16460	68	
80	32.5	3970	6520	11700	13710	55	
90	16.9	3170	5420	9880	11640	33	
100 feet	21	80.4	26460	38420	81010	82750	105
	25	78.1	21040	30610	63240	69400	104
	30	75.2	16570	24240	47110	53740	103
	35	72.2	13550	19940	37340	42730	102

Boom Lgth.	Radius In Feet	Boom Angle Degrees	Free Ratings		Outriggers Extended & Set		Feet From Boom Point
			Over Side	Over Rear	Over Side	Over Rear	
100 feet cont.	40	69.1	11260	16740	30700	35240	100
	50	62.8	8160	12420	22320	25770	95
	60	56.1	6270	9750	17380	20160	89
	70	48.9	4850	7810	13990	16320	82
	80	40.7	3820	6380	11570	13570	72
	90	30.7	3020	5280	9750	11510	58
	100	16.0	2390	4410	8330	9900	34
	110 feet	22	80.8	24760	36020	73430	73430
25		79.2	20800	30390	63120	69000	115
30		76.5	16340	24010	46960	53600	113
35		73.8	13350	19740	37210	42600	112
40		71.1	11050	16530	30540	35080	111
50		65.5	7940	12210	22150	25600	107
60		59.6	6070	9560	17220	20000	101
70		53.3	4650	7600	13810	16140	95
80		46.4	3610	6170	11390	13390	86
90		38.7	2810	5070	9560	11310	75
100		29.2	2180	4200	8140	9700	60
110	15.2	1680	3500	7010	8420	35	
120 feet	24	80.6	—	—	61360	61360	125
	25	80.1	—	—	61360	61360	125
	30	77.7	—	—	46820	53460	124
	35	75.2	—	—	37060	42450	122
	40	72.7	—	—	30380	34920	121
	50	67.6	—	—	21970	25420	117
	60	62.4	—	—	17040	19820	113
	70	56.8	—	—	13640	15970	107
	80	50.8	—	—	11210	13210	100
	90	44.3	—	—	9370	11130	90
	100	37.0	—	—	7950	9520	79
	110	28.0	—	—	6810	8220	63
120	14.5	—	—	5890	7180	37	
130 feet	25	80.9	—	—	51400	51400	135
	30	78.6	—	—	46690	51160	134
	35	76.4	—	—	36920	42310	133
	40	74.1	—	—	30230	34770	131
	50	69.4	—	—	21810	25260	128
	60	64.6	—	—	16890	19670	124
	70	59.6	—	—	13480	15810	119
	80	54.4	—	—	11050	13050	112
	90	48.7	—	—	9210	10970	104
	100	42.5	—	—	7790	9360	94
	110	35.4	—	—	6640	8050	82
	120	26.8	—	—	5720	7010	65
	130	13.9	—	—	4960	6140	38
140 feet	27	80.7	—	—	43840	43840	145
	30	79.5	—	—	43740	43740	144
	35	77.4	—	—	36770	42160	143
	40	75.3	—	—	30070	34600	142
	50	71.0	—	—	21630	25080	139
	60	66.6	—	—	16720	19500	135
	70	62.0	—	—	13300	15630	130
	80	57.3	—	—	10860	12860	124
	90	52.2	—	—	9020	10780	117
	100	46.8	—	—	7600	9160	109
	110	40.9	—	—	6450	7860	98
	120	34.1	—	—	5520	6800	85
	130	25.8	—	—	4740	5920	67
	140	13.4	—	—	4100	5180	39

(Continued)

LIFT RATINGS (cont.)

With 47H Tubular Chord Boom and "M-M" Counterweight (20,000 lb)

Boom Lgh.	Radius in Feet	Boom Angle Degrees	Free Ratings		Outriggers Extended & Set		Feet From Boom Point
			Over Side	Over Rear	Over Side	Over Rear	
150 feet	28	80.9	—	—	36920	36920	155
	30	80.2	—	—	36850	36850	154
	35	78.2	—	—	36410	36410	153
	40	76.3	—	—	29900	34440	152
	50	72.3	—	—	21450	24900	149
	60	68.2	—	—	16540	19320	146
	70	64.0	—	—	13120	15450	141
	80	59.7	—	—	10680	12680	136
	90	55.1	—	—	8840	10590	130
	100	50.3	—	—	7400	8970	122
	110	45.1	—	—	6250	7670	113
	120	39.4	—	—	5310	6600	102
	130	32.9	—	—	4540	5710	88
	140	24.9	—	—	3890	4980	70
	150	13.0	—	—	3340	4350	40
160 feet	30	80.8	—	—	32070	32070	164
	35	79.0	—	—	31670	31670	164
	40	77.1	—	—	29740	31100	162
	50	73.4	—	—	21280	24720	160
	60	69.6	—	—	16380	19160	156
	70	65.8	—	—	12950	15280	152
	80	61.8	—	—	10500	12500	147
	90	57.6	—	—	8660	10420	142
	100	53.2	—	—	7230	8790	135
	110	48.6	—	—	6080	7490	126
	120	43.6	—	—	5140	6420	117
	130	38.1	—	—	4360	5540	105
	140	31.8	—	—	3700	4790	91
	150	24.1	—	—	3150	4160	72
	160	12.5	—	—	2680	3620	41

Boom Lgh.	Radius in Feet	Boom Angle Degrees	Free Ratings		Outriggers Extended & Set		Feet From Boom Point
			Over Side	Over Rear	Over Side	Over Rear	
170 feet	31	81.0	—	—	28030	28030	174
	35	79.6	—	—	27720	27720	174
	40	77.9	—	—	27190	27190	173
	50	74.4	—	—	21100	24540	170
	60	70.9	—	—	16200	18980	167
	70	67.3	—	—	12770	15100	163
	80	63.6	—	—	10310	12310	159
	90	59.7	—	—	8460	10220	153
	100	55.7	—	—	7030	8590	147
	110	51.5	—	—	5880	7290	140
	120	47.1	—	—	4940	6220	131
	130	42.2	—	—	4160	5340	121
	140	36.9	—	—	3490	4580	109
	150	30.8	—	—	2940	3950	94
	160	23.4	—	—	2450	3400	74
170	12.1	—	—	2050	2940	42	

5470.03

LOADING HOISTING DATA*

Maximum Lifting Capacity — Lbs.	Minimum Pts. of Line	Maximum Hoisting Distance — Ft.	
		Main Drum - RH	Auxiliary Drum - LH
130,000	7	73	56
118,620	6	85	65
98,850	5	102	78
79,080	4	128	98
59,310	3	171	131
39,540	2	250	196
19,770	1	512	392

*With controlled load lowering on one drum.

CRANE RATING DATA

Load ratings are in pounds and do not exceed 85% of the load which would cause tipping with crane standing level on firm uniformly supporting surface. Safe loads depend on ground conditions, boom length, radius of operation, and proper handling, all of which must be taken into consideration by user.

Tire inflation pressure for "Free Ratings" and up to 1 M.P.H. is 100 P.S.I. Free ratings do not exceed maximum permissible tire load. Tire pressure shall be reduced for over-the-road travel.

Approved working areas "Free Over Side" and "Free Over Rear" are shown under Diagram No. 1 Approved working areas "Outriggers Extended and Set Over Side or Rear" are shown under Diagram No. 2.

"Radius in feet" is the horizontal distance at crane base level from center pin to a vertical line through the center of gravity of the suspended load.

Lifting is approved only in those areas for which ratings are shown in the rating chart. Blocks, slings, buckets, and other load carrying devices are considered part of the load. Retractable A-frame must be in fully raised position for all ratings. Ratings in shaded areas are limited by strength of material or factors other than stability.

Main load line is 7/8 inch diameter with a minimum breaking strength of 69,200 pounds. Boom suspension line is 5/8 inch diameter with a minimum breaking strength of 41,200 pounds. Boom suspension pendants are 1-1/4 inch diameter with a minimum breaking strength of 172,800 pounds.

Boom and jib erection is over the rear of the machine with outriggers extended and set and with "Lift Rating" counterweight. A-frame must be fully raised and blocks, slings and other load carrying devices must be on the ground.

Compliance to B30.5 based on AMERICAN® carrier mounting.

Designed and rated to comply with ANSI Code B30.5.

ERECTION

Crane with "M-M" counterweight and outriggers extended and set will self-erect over the rear 170 ft. of 47H boom plus 60 ft. of No. 7HL jib.

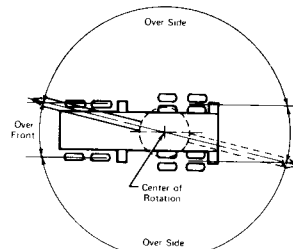


DIAGRAM NO. 1
FREE RATINGS

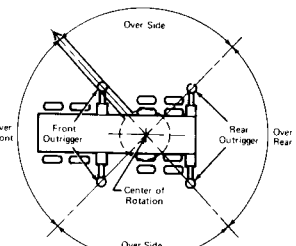
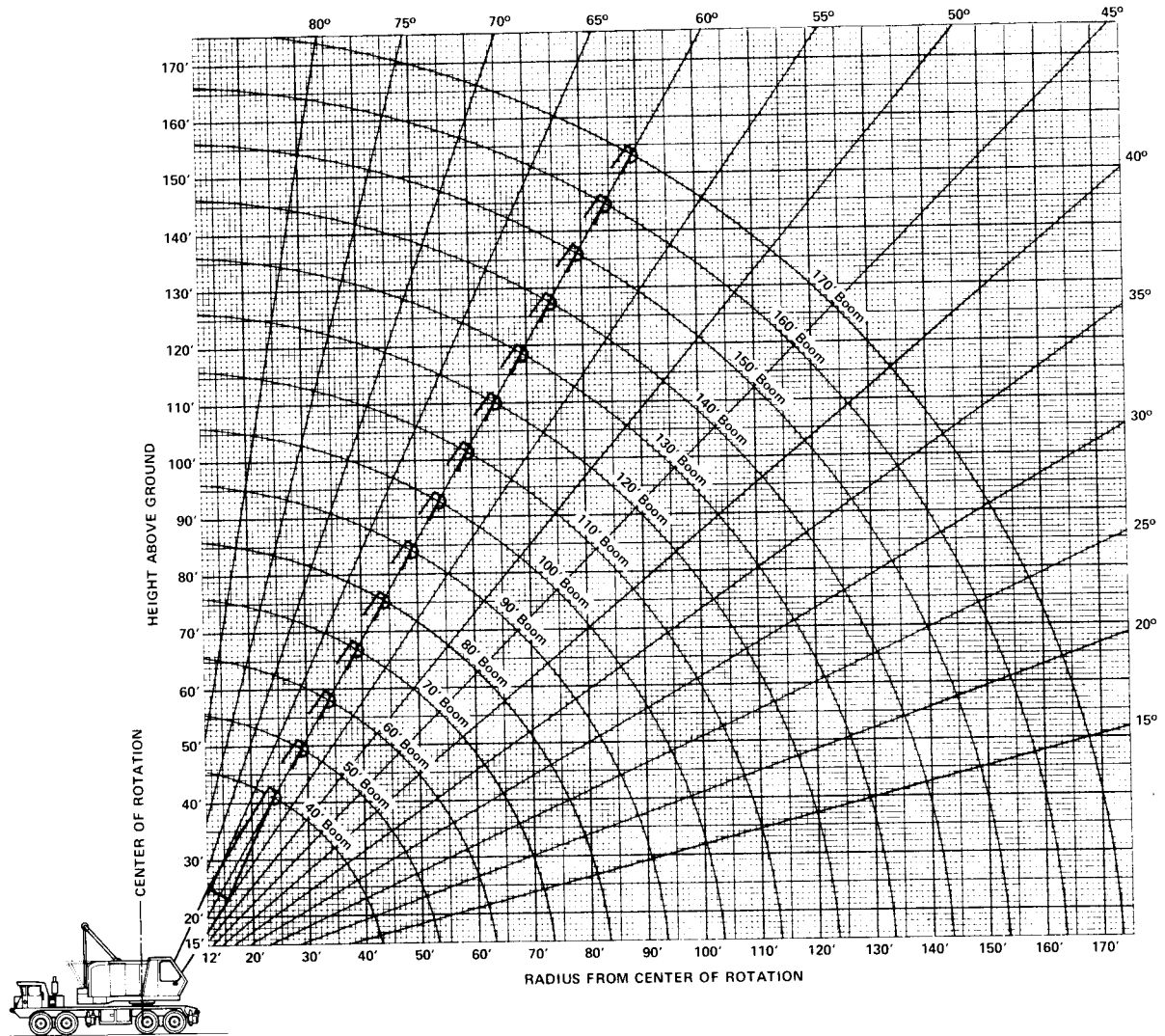


DIAGRAM NO. 2
OUTRIGGERS EXTENDED AND SET

47H TUBULAR BOOM COMPOSITION

Boom Length in Feet	20 Ft. 47H Inner	10 Ft. 47H Center	20 Ft. 47H Center	30 Ft. 47H Center	20 Ft. 47H Outer
40	1	—	—	—	1
50	1	1	—	—	1
60	1	—	1	—	1
70	1	—	—	1	1
80	1	1	—	1	1
90	1	—	1	1	1
100	1	—	—	2	1
110	1	1	—	2	1
120	1	—	1	2	1
130	1	—	—	3	1
140	1	1	—	3	1
150	1	—	1	3	1
160	1	—	—	4	1
170	1	1	—	4	1

BOOM ANGLE DIAGRAM



AMERICAN MODEL 5470 TRUCK CRANE WORKING RANGES

NOTE: In accordance with varying material situations and the Company's policy of constant product improvement these specifications subject to change without notice and without incurring responsibility to units previously sold.

FORM NO. 5470- TR-3



500 SERIES TRUCK CRANE MODEL 5470 NO. 7HL JIB RATINGS WITH 47H BOOM

NO. 7HL JIB RATINGS

With 47H Tubular Chord Boom and "M-M" (20,000 lb.) Counterweight

Boom Length	Boom Radius in Feet	30 Ft. Jib			40 Ft. Jib			50 Ft. Jib			60 Ft. Jib			
		5°	15°	25°	5°	15°	25°	5°	15°	25°	5°	15°	25°	
80	24	16,000												
	25	16,000												
	30	16,000												
	35	16,000	16,000											
	40	16,000	16,000	16,000										
	50	16,000	16,000	16,000										
	60	16,000	16,000	16,000										
	70	14,270	14,270	14,280										
100	80	11,860	11,860	11,860										
	27	16,000												
	30	16,000			16,000									
	35	16,000	16,000		16,000									
	40	16,000	16,000	16,000	16,000	16,000								
	50	16,000	16,000	16,000	16,000	16,000	15,760							
	60	16,000	16,000	16,000	16,000	16,000	14,310							
	70	13,880	13,880	13,880	13,940	13,940	13,090							
120	80	11,450	11,450	11,450	11,510	11,510	11,520							
	90	9,630	9,630	9,630	9,690	9,690	9,700							
	100	8,210	8,220	8,220	8,270	8,280	8,280							
	30	16,000			16,000									
	35	16,000	16,000		16,000									
	40	16,000	16,000	16,000	16,000	16,000								
	50	16,000	16,000	16,000	16,000	16,000	16,000							
	60	16,000	16,000	16,000	16,000	16,000	14,950							
140	70	13,460	13,460	13,460	13,520	13,520	13,530							
	80	11,020	11,030	11,030	11,090	11,090	11,090							
	90	9,200	9,210	9,210	9,260	9,260	9,260							
	100	7,780	7,790	7,790	7,840	7,840	7,840							
	110	6,650	6,650	6,650	6,700	6,700	6,700							
	120	5,701	5,710	5,720	5,770	5,770	5,780							
	36				16,000			16,000						
	40				16,000			16,000						
160	50				16,000	16,000	13,340	15,840	13,970					
	60				16,000	16,000	13,120	15,230	13,610					
	70				13,120	13,120	12,780	13,180	13,180	11,480				
	80				10,690	10,690	10,690	10,730	10,730	10,740				
	90				8,850	8,860	8,860	8,900	8,900	8,900				
	100				7,420	7,420	7,430	7,470	7,470	7,470				
	110				6,280	6,280	6,290	6,320	6,330	6,330				
	120				5,350	5,350	5,360	5,390	5,400	5,400				
160	130				4,580	4,580	4,580	4,620	4,620	4,620				
	140				3,920	3,920	3,930	3,960	3,960	3,970				
	41							13,520			12,290			
	50							12,790	10,950		11,990			
	60							12,010	10,510	8,330	11,220			
	70							11,290	10,020	8,070	10,510	9,500		
	80							10,320	9,500	7,760	9,870	9,100	7,100	
	90							8,490	8,490	7,370	8,510	8,660	6,860	
160	100							7,050	7,060	7,000	7,080	7,080	6,300	
	110							5,910	5,910	5,920	5,930	5,940	5,940	
	120							4,970	4,970	4,980	4,990	5,000	5,000	
	130							4,190	4,190	4,200	4,210	4,210	4,220	
	140							3,540	3,540	3,550	3,560	3,570	3,570	
	150							2,970	2,980	2,980	2,990	3,000	3,000	
	160							2,490	2,490	2,500	2,510	2,510	2,520	

J5470.02

FORM NO. 5470-J7-1

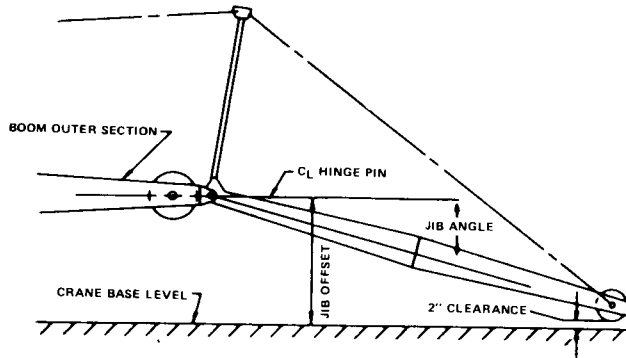
NO. 7HL JIB RATING DATA

Load ratings are in pounds and do not exceed 85% of the load which would cause tipping with crane standing level on firm uniformly supporting surface. Safe loads depend on ground conditions, boom lengths, radius of operation, and proper handling, all of which must be taken into consideration by user. Radius in feet is the horizontal distance at crane base level from center of rotation to a vertical line through the center of gravity of the suspended load. Lifting is approved only in those areas for which ratings are shown in the rating chart. Blocks, slings, buckets, and other load carrying devices are considered part of the load. Retractable A-frame must be in fully raised position for all ratings. Ratings in shaded areas are limited by strength of material, or factors other than stability.

When using the main boom fall with the jib in place, the main fall ratings must be reduced by the jib effective weight shown in the table below, and the weight of all suspended blocks, slings, etc., at the main fall and twice the weight of any such devices at the jib fall. All load carrying devices are considered part of the load.

Jib backstay line is .875 inch diameter wire rope with a minimum breaking strength of not less than 69,200 pounds.

Whip-line is .875 inch diameter 6 x 25, P, RRL, FW, IPS, IWRC wire rope with a minimum strength of not less than 69,200 pounds. Designed and rated to comply with ANSI Code B30.5.



JIB COMPOSITION

Jib Length (Feet)	10' Inner	10' Center	20' Center	20' Outer	Eff. Jib Weight	Jib Offset "A" in Feet		
						5°	15°	25°
30	1	0	0	1	1,400	3.83	7.67	11.33
40	1	1	0	1	1,950	4.50	9.50	14.33
50	1	0	1	1	2,630	5.17	11.50	17.58
60	1	1	1	1	2,950	5.75	13.25	20.58

LOAD HOISTING DATA

Maximum Lifting Capacity — Lbs.	Minimum Pts. of Line	Maximum Hoisting Distance	
		Main Drum	Aux. Drum
16,000	1	511'	

NOTE: In accordance with varying material situations and the Company's policy of constant product improvement these specifications subject to change without notice and without incurring responsibility to units previously sold.

5JR802

FORM NO. 5470-J7-1

PRINTED IN U.S.A.



CONSTRUCTION EQUIPMENT GROUP
63 SO. ROBERT ST., ST. PAUL, MN 55107



AMERICAN HOIST & DERRICK COMPANY
AN EQUAL OPPORTUNITY EMPLOYER



500 SERIES MODEL 5470 TRUCK CRANE

LIFT RATINGS

With 47H Tubular Boom and "M-M" Counterweight (20,000 lb)

Boom Lgth.	Radius In Feet	Boom Angle Degrees	Free Ratings		Outriggers Extended & Set		Feet From Boom Point
			Over Side	Over Rear	Over Side	Over Rear	
40 feet	11	80.5	0	97530	130000	130000	46
	12	79.0	0	85360	128610	130000	46
	15	74.6	42740	61870	106730	115270	45
	20	67.0	29400	42100	86000	88500	43
	25	58.8	22140	31680	63690	71010	41
	30	49.9	17620	25260	47670	54320	37
	35	39.5	14530	20900	37940	43340	32
	40	25.8	12260	17720	31380	35930	24
50 feet	13	80.1	47860	75670	119440	130000	56
	15	77.7	42390	61740	106640	115180	55
	20	71.8	29230	41940	85690	88160	54
	25	65.6	21980	31530	63670	70700	52
	30	59.1	17460	25110	47620	54270	49
	35	52.0	14380	20760	37880	43280	46
	40	44.2	12110	17580	31300	35840	41
	50	22.9	9030	13280	23010	26460	26
60 feet	14	80.8	44640	67890	111880	121860	66
	15	79.8	42040	61570	106120	114630	66
	20	74.9	29050	41770	85310	87780	64
	25	69.9	21800	31350	63610	70350	63
	30	64.7	17290	24940	47540	54180	61
	35	59.2	14230	20600	37790	43190	58
	40	53.4	11950	17420	31190	35740	55
	50	40.1	8860	13110	22890	26340	45
60	20.8	6890	10370	17900	20680	28	
70 feet	16	80.5	38870	56150	100560	107780	75
	20	77.1	28910	41630	84960	87760	75
	25	72.9	21660	31220	63560	70300	73
	30	68.5	17160	24810	47470	54110	72
	35	64.0	14110	20490	37730	43130	69
	40	59.3	11820	17290	31110	35650	67
	50	49.2	8730	12980	22790	26240	59
	60	37.0	6790	10270	17820	20610	49
70	19.2	5390	8330	14450	16780	29	
80 feet	17	80.9	35680	51550	95920	101800	85
	20	78.7	28680	41410	84570	87340	85
	25	75.1	21440	31010	63460	69920	84
	30	71.3	16950	24610	47360	54000	82
	35	67.5	13920	20300	37600	43000	80
	40	63.5	11630	17100	30970	35510	78
	50	55.1	8530	12790	22630	26080	72
	60	45.8	6610	10090	17670	20450	64
70	34.5	5200	8150	14300	16630	52	
80	17.9	4160	6720	11880	13880	31	
90 feet	19	80.7	30490	44130	87810	91270	95
	20	80.0	28450	41190	84490	86930	95
	25	76.8	21220	30790	63350	69510	94
	30	73.5	16740	24400	47220	53860	93
	35	70.1	13710	20100	37460	42850	91
	40	66.7	11430	16900	30820	35360	89
	50	59.5	8320	12580	22460	25910	84
	60	51.7	6420	9900	17510	20300	77
70	43.0	5010	7950	14130	16460	68	
80	32.5	3970	6520	11700	13710	55	
90	16.9	3170	5420	9880	11640	33	
100 feet	21	80.4	26460	38420	81010	82750	105
	25	78.1	21040	30610	63240	69400	104
	30	75.2	16570	24240	47110	53740	103
	35	72.2	13550	19940	37340	42730	102

Boom Lgth.	Radius In Feet	Boom Angle Degrees	Free Ratings		Outriggers Extended & Set		Feet From Boom Point
			Over Side	Over Rear	Over Side	Over Rear	
100 feet cont.	40	69.1	11260	16740	30700	35240	100
	50	62.8	8160	12420	22320	25770	95
	60	56.1	6270	9750	17380	20160	89
	70	48.9	4850	7810	13990	16320	82
	80	40.7	3820	6380	11570	13570	72
	90	30.7	3020	5280	9750	11510	58
	100	16.0	2390	4410	8330	9900	34
	110 feet	22	80.8	24760	36020	73430	73430
25		79.2	20800	30390	63720	69000	115
30		76.5	16340	24010	46960	53600	113
35		73.8	13350	19740	37210	42600	112
40		71.1	11050	16530	30540	35080	111
50		65.5	7940	12210	22150	25600	107
60		59.6	6070	9560	17220	20000	101
70		53.3	4650	7600	13810	16140	95
80		46.4	3610	6170	11390	13390	86
90		38.7	2810	5070	9560	11310	75
100		29.2	2180	4200	8140	9700	60
110		15.2	1680	3500	7010	8420	35
120 feet	24	80.6	—	—	61360	61360	125
	25	80.1	—	—	61360	61360	125
	30	77.7	—	—	46820	53460	124
	35	75.2	—	—	37060	42450	122
	40	72.7	—	—	30380	34920	121
	50	67.6	—	—	21970	25420	117
	60	62.4	—	—	17040	19820	113
	70	56.8	—	—	13640	15970	107
	80	50.8	—	—	11210	13210	100
	90	44.3	—	—	9370	11130	90
	100	37.0	—	—	7950	9520	79
	110	28.0	—	—	6810	8220	63
120	14.5	—	—	5890	7180	37	
130 feet	25	80.9	—	—	51400	51400	135
	30	78.6	—	—	46690	51160	134
	35	76.4	—	—	36920	42310	133
	40	74.1	—	—	30230	34770	131
	50	69.4	—	—	21810	25260	128
	60	64.6	—	—	16890	19670	124
	70	59.6	—	—	13480	15810	119
	80	54.4	—	—	11050	13050	112
	90	48.7	—	—	9210	10970	104
	100	42.5	—	—	7790	9360	94
	110	35.4	—	—	6640	8050	82
	120	26.8	—	—	5720	7010	65
	130	13.9	—	—	4960	6140	38
140 feet	27	80.7	—	—	43840	43840	145
	30	79.5	—	—	43740	43740	144
	35	77.4	—	—	36770	42160	143
	40	75.3	—	—	30070	34600	142
	50	71.0	—	—	21630	25080	139
	60	66.6	—	—	16720	19500	135
	70	62.0	—	—	13300	15630	130
	80	57.3	—	—	10360	12860	124
	90	52.2	—	—	9020	10780	117
	100	46.8	—	—	7600	9160	109
	110	40.9	—	—	6450	7860	98
	120	34.1	—	—	5520	6800	95
	130	25.8	—	—	4740	5920	67
	140	13.4	—	—	4100	5180	39

(Continued)

FORM NO. 5470-TR-1A

LIFT RATINGS (cont.)

With 47H Tubular Boom and "M-M" Counterweight (20,000 lb)

Boom Lgth.	Radius In Feet	Boom Angle Degrees	Free Ratings		Outriggers Extended & Set		Feet From Boom Point
			Over Side	Over Rear	Over Side	Over Rear	
150 feet	28	80.9	—	—	36920	36920	155
	30	80.2	—	—	36850	36850	154
	35	78.2	—	—	36410	36410	153
	40	76.3	—	—	29900	34440	152
	50	72.3	—	—	21450	24900	149
	60	68.2	—	—	16540	19320	146
	70	64.0	—	—	13120	15450	141
	80	59.7	—	—	10680	12680	136
	90	55.1	—	—	8840	10590	130
	100	50.3	—	—	7400	8970	122
	110	45.1	—	—	6250	7670	113
	120	39.4	—	—	5310	6600	102
	130	32.9	—	—	4540	5710	88
	140	24.9	—	—	3890	4980	70
	150	13.0	—	—	3340	4350	40
160 feet	30	80.8	—	—	32070	32070	164
	35	79.0	—	—	31670	31670	164
	40	77.1	—	—	29740	31100	162
	50	73.4	—	—	21280	24720	160
	60	69.6	—	—	16380	19160	156
	70	65.8	—	—	12950	15280	152
	80	61.8	—	—	10500	12500	147
	90	57.6	—	—	8660	10420	142
	100	53.2	—	—	7230	8790	135
	110	48.6	—	—	6080	7490	126
	120	43.6	—	—	5140	6420	117
	130	38.1	—	—	4360	5540	105
	140	31.8	—	—	3700	4790	91
	150	24.1	—	—	3150	4160	72
	160	12.5	—	—	2680	3620	41

Boom Lgth.	Radius In Feet	Boom Angle Degrees	Free Ratings		Outriggers Extended & Set		Feet From Boom Point
			Over Side	Over Rear	Over Side	Over Rear	
170 feet	31	81.0	—	—	28030	28030	174
	35	79.6	—	—	27720	27720	174
	40	77.9	—	—	27190	27190	173
	50	74.4	—	—	21100	24540	170
	60	70.9	—	—	16200	18980	167
	70	67.3	—	—	12770	15100	163
	80	63.6	—	—	10310	12310	159
	90	59.7	—	—	8460	10220	153
	100	55.7	—	—	7030	8590	147
	110	51.5	—	—	5880	7290	140
	120	47.1	—	—	4940	6220	131
	130	42.2	—	—	4160	5340	121
	140	36.9	—	—	3490	4580	109
	150	30.8	—	—	2940	3950	94
	160	23.4	—	—	2450	3400	74
	170	12.1	—	—	2050	2940	42

Load Hoisting Data*

Maximum Lifting Capacity — Lbs.	Minimum Pts. of Line	Maximum Hoisting Distance — Ft.	
		Main Drum - RH	Auxiliary Drum - LH
130,000	7	73	56
118,620	6	85	66
98,850	5	102	79
79,080	4	127	99
59,310	3	170	132
39,540	2	255	198
19,770	1	511	396

*With controlled load lowering on one drum.

5470.03

CRANE RATING DATA

Load ratings are in pounds and do not exceed 85% of the load which would cause tipping with crane standing level on firm uniformly supporting surface. Safe loads depend on ground conditions, boom length, radius of operation, and proper handling, all of which must be taken into consideration by user.

Tire inflation pressure for "Free Ratings" and up to 1 M.P.H. is 100 P.S.I. Free ratings do not exceed maximum permissible tire load. Tire pressure shall be reduced for over-the-road travel.

Approved working areas "Free Over Side" and "Free Over Rear" are shown under Diagram No. 1 Approved working areas "Outriggers Extended and Set Over Side or Rear" are shown under Diagram No. 2.

"Radius in feet" is the horizontal distance at crane base level from center pin to a vertical line through the center of gravity of the suspended load.

Lifting is approved only in those areas for which ratings are shown in the rating chart. Blocks, slings, buckets, and other load carrying devices are considered part of the load. Retractable A-frame must be in fully raised position for all ratings. Ratings in outlined areas are limited by strength of material or factors other than stability.

Main load line is 7/8 inch diameter with a minimum breaking strength of 69,200 pounds. Boom suspension line is 5/8 inch diameter with a minimum breaking strength of 41,200 pounds. Boom suspension pendants are 1-1/4 inch diameter with a minimum breaking strength of 172,800 pounds.

Boom and jib erection is over the rear of the machine with outriggers extended and set and with "Lift Rating" counterweight. A-frame must be fully raised and blocks, slings and other load carrying devices must be on the ground.

Compliance to B30.5 based on AMERICAN* carrier mounting. Designed and rated to comply with ANSI Code B30.5.

ERECTION

Crane with "M-M" counterweight and outriggers extended and set will self-erect over the rear 170 ft. of 47H boom plus 40 ft. of No. 6 jib or 60 ft. of No. 7HL jib.

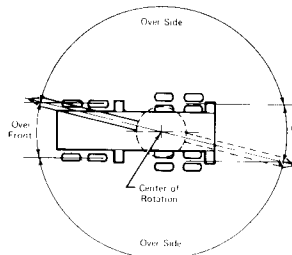


DIAGRAM NO. 1
FREE RATINGS

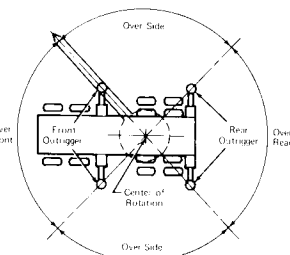
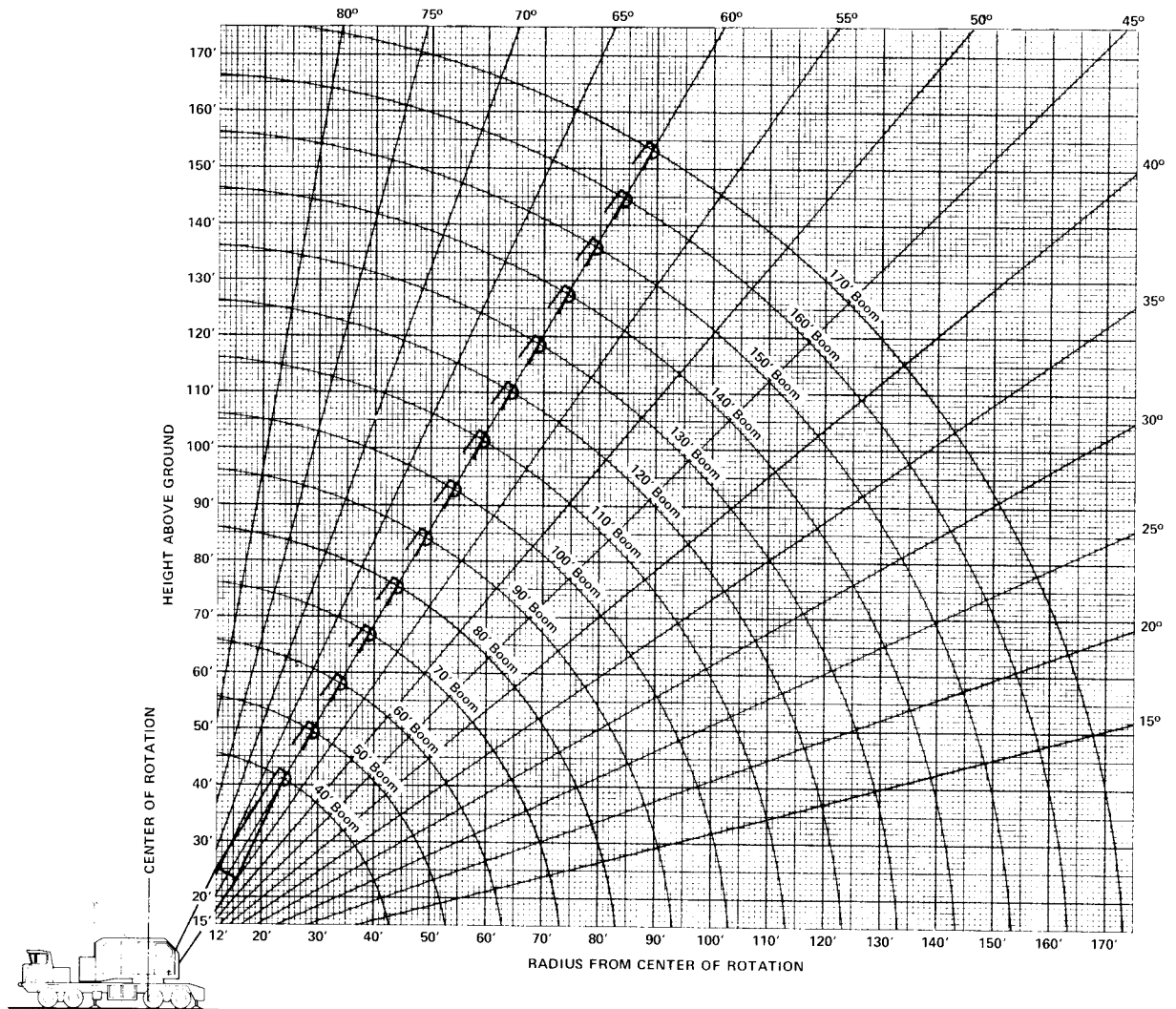


DIAGRAM NO. 2
OUTRIGGERS EXTENDED AND SET

47H TUBULAR BOOM COMPOSITION

Boom Length in Feet	20 Ft. 47H Inner	10 Ft. 47H Center	20 Ft. 47H Center	30 Ft. 47H Center	20 Ft. 47H Outer
40	1	—	—	—	1
50	1	1	—	—	1
60	1	—	1	—	1
70	1	—	—	1	1
80	1	1	—	1	1
90	1	—	1	1	1
100	1	—	—	2	1
110	1	1	—	2	1
120	1	—	1	—	1
130	1	—	—	2	1
140	1	1	—	3	1
150	1	—	1	3	1
160	1	—	—	4	1
170	1	1	—	4	1

BOOM ANGLE DIAGRAM



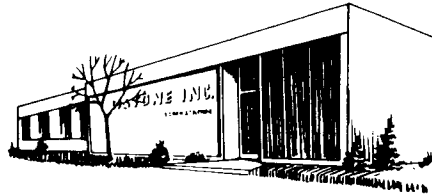
AMERICAN MODEL 5470 TRUCK CRANE WORKING RANGES

NOTE: In accordance with varying material situations and the Company's policy of constant product improvement these specifications subject to change without notice and without incurring responsibility to units previously sold.

... protect your equipment right from the start, with an AMERICAN® FULL SERVICE DISTRIBUTOR

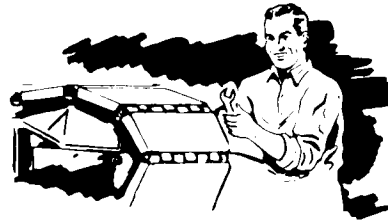
SALES

- Complete application and job information as well as consultation to insure matched equipment to the job ... plus sales availability for a full line of truck, crawler and pedestal cranes.



SERVICE

- Complete service coverage for your AMERICAN® equipment with a full staff of factory trained personnel ... you keep working with AMERICAN® full service distributor protection.



PARTS

- Complete stock of parts for continued operation of AMERICAN® equipment under all conditions ... protects your investment and job capability.



5JR772

FORM NO. 5470-TR-1A

PRINTED IN U.S.A.



CONSTRUCTION EQUIPMENT DIVISION
63 SO. ROBERT ST., ST. PAUL, MN 55107

amhoist AMERICAN HOIST & DERRICK COMPANY



5470

CARRIER SPECIFICATIONS



GENERAL DIMENSIONS

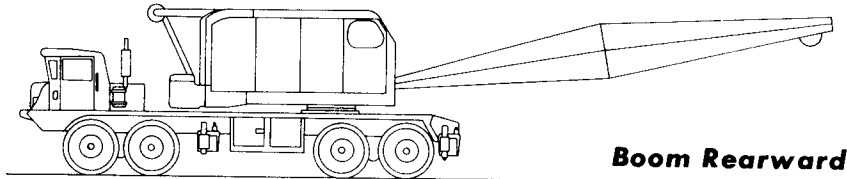
A.	Width of cab	9' 0"	L.	Centerline of rear bogie to centerline of rear outrigger	5' 6½"
B.	Height to top of cab	11' 11½"	M.	Overall length	32' 11"
C.	Tailswing	12' 1"	N.	Overall width	10' 0"
C ₁ .	Tailswing with A-frame lowered	13' 8½"	O.	Outriggers extended w/screw jacks	9' 10"
D.	Centerline of rotation to centerline of boom foot	3' 8"	O ₁ .	Outriggers extended w/hydraulic outriggers	9' 6"
E.	Ground to centerline boom foot	6' 5½"	P.	Height over mounting plate	4' 4½"
F.	Height over A-Frame (lowered)	12' 4½"	R.	Height over carrier cab	8' 11"
F ₁ .	Height over A-Frame (raised)	19' 1½"	S.	Centerline of rear outrigger to centerline of front outrigger	18' 9"
G.	Ground to bottom of counterweight	4' 7"	T.	Center of rear outrigger to rear of carrier	1' 0"
H.	Centerline of rotation to centerline of rear bogie	3' 10"		Turning radius	56'
I.	Distance between rear axles	4' 10"		Clearance (under rear equalizing beam)	12"
J.	Distance between front axles	4' 6"		Clearance (under rear differential)	13½"
K.	Centerline of rear bogie to centerline of front bogie	18' 9"			

FORM NO. 5470-TCC-2

5470 TRAVELING WEIGHTS IN POUNDS

X = IN PLACE

O = REMOVED



Boom Rearward

Block	Outer Boom	Inner Boom	Counterwt.	Front Outrigger	Rear Outrigger	Front Tandem	Rear Tandem	Gross Weights
X	X	X	X	X	X	41900	64070	105970
X	X	X	O	X	X	26530	59440	85970
X	X	X	O	O	X	23040	57980	81020
X	X	X	O	X	O	27990	53030	81020
X	X	X	O	O	O	24500	51560	76060
O	X	X	X	X	X	44440	60320	104760
O	X	X	O	X	X	29070	55690	84760
O	X	X	O	O	X	25590	54230	79820
O	X	X	O	X	O	30540	49280	79820
O	X	X	O	O	O	27050	47820	74870
O	O	X	X	X	X	46660	56310	102970
O	O	X	O	X	X	31290	51680	82970
O	O	X	O	O	X	27800	50220	78020
O	O	X	O	X	O	32750	45270	78020
O	O	X	O	O	O	29260	43800	73060
O	O	O	X	X	X	47570	53450	101020
O	O	O	O	X	X	32200	48820	81020
O	O	O	O	O	X	28710	47350	76060
O	O	O	O	X	O	33660	42400	76060
O	O	O	O	O	O	30170	40940	71110
Carrier with outriggers & bullgears — less upper						19650	28070	47720

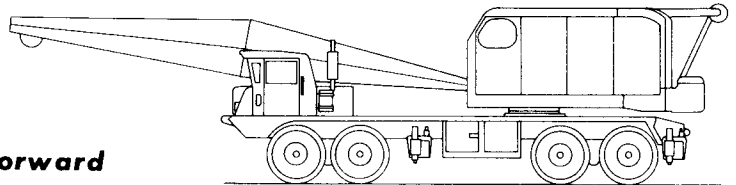
NOTE: Because of variable manufacturing tolerances a variance of +3% should be allowed on the above weights.

10:38/11/04/76

5470 TRAVELING WEIGHTS IN POUNDS

X = IN PLACE

O = REMOVED



Boom Forward

Block	Outer Boom	Inner Boom	Counterwt.	Front Outrigger	Rear Outrigger	Front Tandem	Rear Tandem	Gross Weights
X	X	X	X	X	X	21200	84760	105960
X	X	X	O	X	X	28400	57560	85960
X	X	X	O	O	X	24910	56100	81010
X	X	X	O	X	O	29860	51150	81010
X	X	X	O	O	O	26380	49690	76070
O	X	X	X	X	X	18170	86600	104770
O	X	X	O	X	X	25370	59400	84770
O	X	X	O	O	X	21880	57940	79820
O	X	X	O	X	O	26830	52990	79820
O	X	X	O	O	O	23340	51530	74870
O	O	X	X	X	X	15220	87750	102970
O	O	X	O	X	X	22420	60550	82970
O	O	X	O	O	X	18930	59090	78020
O	O	X	O	X	O	23880	54140	78020
O	O	X	O	O	O	20390	52680	73070
O	O	O	X	X	X	13510	87510	101020
O	O	O	O	X	X	20710	60310	81020
O	O	O	O	O	X	17220	58850	76070
O	O	O	O	X	O	22170	53900	76070
O	O	O	O	O	O	18680	52430	71110
Carrier with bullgear — less outriggers and upper						17550	20270	37820

NOTE: Because of variable manufacturing tolerances a variance of +3% should be allowed on the above weights.

10/38/11/04/76

5470 CARRIER SPECIFICATIONS

Specifications for AMERICAN MODEL 5470, 65 ton, 225" wheelbase, 8 x 4 carrier.

FRAME: Box welded frame members designed and manufactured to provide adequate support for crane weight and capacities. High strength alloy steel used throughout the construction of the carrier. Tow bars are provided front and rear, full length fenders, locked side mounted storage box and float storage racks.

HYDRAULIC OUTRIGGERS: Two independent housings fabricated from "T-1" steel, or equivalent, outrigger beams with horizontal and vertical hydraulic movements, automatic check and manual shut-off valves in hydraulic jacks to assure maximum safety for all lifts, hardened chrome plated rams, fitted with 36" dia. aluminum floats, pin connected and removable.

STANDARD ENGINE: General Motors 6171-N diesel, 6 cylinder, 4 1/4" bore x 5" stroke, 426 cu. in. displacement, rated 238 HP @ 2100 RPM. Thermostatically controlled radiator shutters.

OPTIONAL ENGINE: Cummins NTC-230 diesel engine, 6 cylinder, 5 1/2" bore x 6" stroke, 855 cu. in. displacement, rated 230 HP @ 2100 RPM. Thermostatically controlled radiator shutters.

OPTIONAL ENGINE: Cummins NTC-250 diesel engine, 6 cylinder, 5 1/2" bore x 6" stroke, 855 cu. in. displacement, rated 250 HP @ 2100 RPM. Thermostatically controlled radiator shutters.

FUEL TANK: One 60 (U.S.) gallon safety fuel tank.

ELECTRICAL: Standard engine — 12 volt system, 500 watt alternator, 2-12 volt batteries in parallel.

POWER STEERING: Garrison Twin-ram hydraulic power steering with Ross cam, 20" dia. steering wheel.

CLUTCH: Spicer 14" 2 plate pull type clutch, hydraulically actuated.

MAIN TRANSMISSION: Fuller Model T905B five speed forward, and one reverse. Ratios:

First	6.35:1	Fourth	1.16:1
Second	3.75:1	Fifth	1:1
Third	2.04:1	Reverse	6.48:1

AUXILIARY TRANSMISSION: Spicer 7041 four speed. Ratios:

First	2.31:1
Second	1.21:1
Third	1:1
Fourth	.83:1

FRONT AXLES: Shuler FTKA-34-L-9 in tandem.

REAR AXLES: Clark planetary BD-57000 tandem assembly, non-spin differential on leading axle; ratio 8.667:1.

SUSPENSION: Hendrickson solid mount with rubber bushed torque rods front and rear.

PROPEL SHAFT: Mechanics needle bearing.

SERVICE BRAKES: Air on all wheels with 14.5 c.f.m. compressor and two reservoirs, lining area 16 1/2" x 7" (826 sq. in.) rear; 17 1/2" x 4" (495 sq. in.) front; 1321 sq. in. total lining area.

EMERGENCY BRAKE: Spring set, air release system on both rear axle with operator's control on dash panel, and one reserve air reservoir for release of spring set chambers.

WHEELS: Cast spoke front; rear integrally cast with axles. 10:00 x 20 rims.

TIRES: 14:00 x 20, 18-PR non-directional mud and snow.

CAB: One man cab, 32" wide, fully enclosed, offset to left side, removable panel for engine access, boom guide, Bostrom driver's seat.

STANDARD EQUIPMENT: West Coast type mirrors, air windshield wiper, windshield washer, heater, defroster, sealed beam oval headlights, front and rear directional signals, combination stop and taillights, back up lights, clearance lights on top and side of cab, electric and air horn, dome light, indirect lighted instrument panel, speedometer, ammeter, fuel gauge, engine temperature indicator, air pressure gauge, oil pressure gauge, low air pressure warning signal, and tachometer.

OPTIONAL ACCESSORIES: Remote control of hydraulic outriggers from crane upperworks, remote control of carrier from crane upperworks, ether cold weather starting aid, spare tire and rim, interaxle differential, engine brake.

PERFORMANCE:

Maximum governed speed (High-High)	45 MPH
Minimum governed speed	1.17 MPH
Maximum gradeability based on wheel slip	38%

NOTE: In accordance with varying material situations and the Company's policy of constant product improvement these specifications subject to change without notice and without incurring responsibility to units previously sold.

5JR779

FORM NO. 5470-TCC-2

PRINTED IN U.S.A.



CONSTRUCTION MACHINERY DIVISION
63 SO. ROBERT ST., ST. PAUL, MN 55107

amhoist

AMERICAN HOIST & DERRICK COMPANY