



## THE PROPOSAL AS 18

### Telescopic Platform on the Vehicle

<b>COMPANY :</b>	<b>FROM : ASELKON</b>
<b>Authorized :</b>	<b>DATE :</b>

Dear Sirs,

ASELKON As 18 TP1-type crane is considering buying the technical specifications, price, payment and delivery date, the attached information is presented. Hope that your assessment will be positive, wish you a successful.

Sincerely,

**Nurullah ŞAHİN**  
**Mechanical Engineer, MSC**



## Technical Specifications

<b>Platform Model</b>	<b>: AS 18 TP1</b>
<b>Working height of approximately</b>	<b>: 18 meters</b>
<b>Platform height of approximately</b>	<b>: 17 meters</b>
<b>Approximate Lateral Reach</b>	<b>: 13 meters</b>

### Platform will have Independent chassis

To-do and the balance of the platform will be mounted to the chassis legs detached. The chassis of the vehicle chassis, screws and studs connected to the carrier. In this way, the carrier vehicle in the case of long-term failure of a carrier vehicle can be transferred to another machine easily removed.

### Steel Construction

The platform chassis, will be made to set foot booms St 52-3 quality steel sheet, the main boom, the upright boom and will be produced from high-strength WELDOX 700 or equivalent material.

### Basket

- Basket dimensions: 700 x 1100 x 1600 ( mm )
- Carrying capacity of Basket: 200 kg
- Basket will be equipped with automatic balance system. In this way, every angle of the boom basket will be parallel to the ground.
- Basket will be able to act on its own axis 70 ° left and right.
- 

### Control System

- The hydraulic system can be controlled from both direct controls and shall be placed over the basket. In this way, the basket will be able to control both the event of failure on the easy basket down below, the basket will be able to help in downloading.
- The platform of the vehicle during operation of the gearbox, PTO or hydraulic pump which may occur in the case of any failure on the platform again to be downloaded to the vehicle will be mounted hand pump hydraulic system imported origin.
- Besides, a weight control system will be equipped that records which boom worked how long and these records can be transferred to computer via USB then duration of maintenance and wear statistics of crane can be calculated.
- The whole electronic parts of the crane will have IP54 class ambient resistance.
- Optimization work on sloped ground with nine-axis three angle sensors ( main boom, folding boom, on the second folding) and with electronic balance system.
- Pressures and angles of the boom can be followed on the screen display in real-time.
- The opportunity to watch from the operator panel by dual-axis motion tracking camera system.

### Rotation operations:

Slewing ring, AEC origin planetary reducers, and hydraulic motor, hydraulic brakes and is provided through the pinion gear. It will return to 360 degrees.

**KAMPÜS Machine Co. Ltd.** Address: 10727 Street Number:15 KONSAN OSB KARATAY  
KONYA -TURKEY Tel: 0332 346 06 10 FAX: 0332 342 65 14  
www.kampushidrolik.com Mail: aselkon42@gmail.com - export@aselkon.net



### **The feet Balance**

- 2 pieces under the platform, under the chassis and the earth opens to two pieces of leg of the balance will be a total of 4 pieces. These legs will be mounted in the frame of the platform independent. Angled legs during the operation of the crane will come down, meanwhile the carrier vehicle's chassis, axles and shears will not load.
- Combined bending and torsion foot booms sensitive resources, etc. as resistant high-strength material (at least the quality of ST-52 or equivalent) type of box will be manufactured.

### **Boom Group**

- Wear and reduces friction between the main boom and telescopic booms will be guiding kestamit.
- Main boom and telescopic booms WELDOX 960 or equivalent high-strength material will be imported

### **Hydraulic System**

- Double-acting hydraulic cylinders and honed from high-strength material (at least the quality of ST-52 or equivalent) will be produced.
- Rods precision-machined, hard chrome-plated high-strength material to (at least the quality of O-1040 or equivalent) will be produced.
- The hydraulic system; machine, hydraulic system and an overload in order to protect the people working under the machine, waiting for a long time to load the hose burst and pressure relief, load holding (Over center) and twin locking valves shall be used.
- Normal engine speed of the vehicle will provide 250 bar pressure pump continuously.
- The system will be provided on the suction and return filter cleaning system using the system will be healthy and long life.
- Hydraulic plumbing pipes, seamless steel pipe imported from cold-shooting will be covered with phosphate ST37.
- The hydraulic hoses, hoses will be R2 double wire braid.
- A record thimbles used for Installation will be imported.
- Hydraulic oil tank capacity of the platform, the platform will not interfere with the operation capacity will be selected.



### Materials

- |                       |  |
|-----------------------|--|
| • Pump                | Sunfab(ASELKON)                                |
| • Crane Control       | Walvoil (ASELKON)                              |
| • Feet Control        | Walvoil (ASELKON)                              |
| • Reducer             | Dinamic Oil (ASELKON)                          |
| • Valves              | Oilcontrol (ASELKON)                           |
| • Rotation Filter     | Ikron (ASELKON)                                |
| • Suction Filter      | Ikron (ASELKON)                                |
| • Hoses               | Manuli (ASELKON)                               |
| • Hydraulic Cylinders | Materials are European, Workmanship is ASELKON |
| • Ring Gear           | IMO Table Gear (ASELKON)                       |

**Note:** Our Company has the right to make changes if necessary, has the equivalent of the materials.

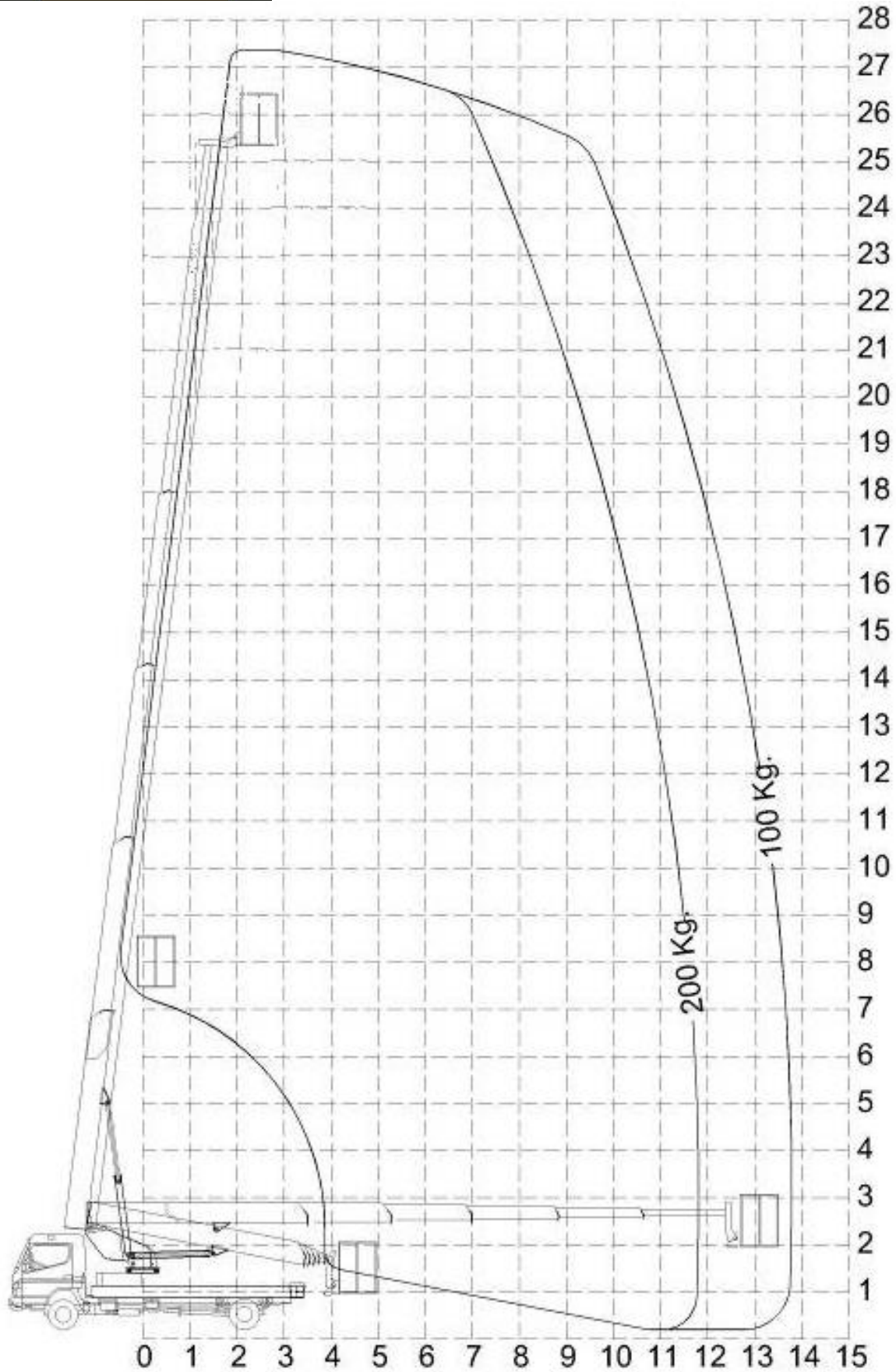
**Price and Payment:** % 50 When ordering Prepaid, % 50 delivery of the machine;

- |                           |                   |
|---------------------------|-------------------|
| • AS 18 TP1 type platform | <b>45.000 USD</b> |
|---------------------------|-------------------|

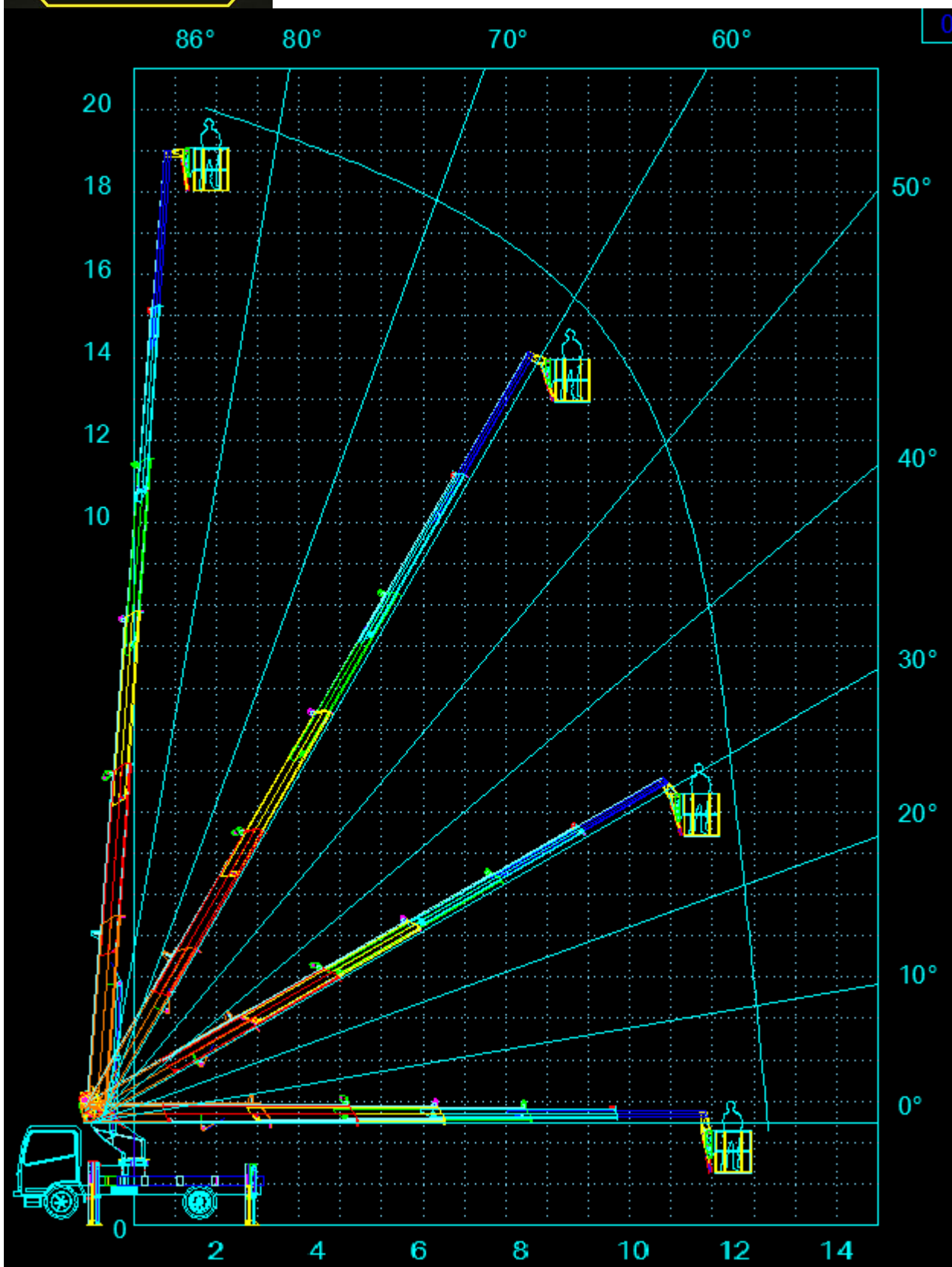
### Warranty

The Crane Warranty is 24 months or 3750 hours (whichever comes first), spare parts supply and service company in terms of the manufacturer warranty of 15 years.

**Validity :** -



**KAMPÜS Machine Co. Ltd.** Address: 10727 Street Number:15 KONSAN OSB KARATAY  
KONYA -TURKEY Tel: 0332 346 06 10 FAX: 0332 342 65 14  
www.kampushidrolik.com Mail: aselkon42@gmail.com - export@aselkon.net



**KAMPÜS Machine Co. Ltd.** Address: 10727 Street Number:15 KONSAN OSB KARATAY  
KONYA -TURKEY Tel: 0332 346 06 10 FAX: 0332 342 65 14  
[www.kampushidrolik.com](http://www.kampushidrolik.com) Mail: [aselkon42@gmail.com](mailto:aselkon42@gmail.com) - [export@aselkon.net](mailto:export@aselkon.net)