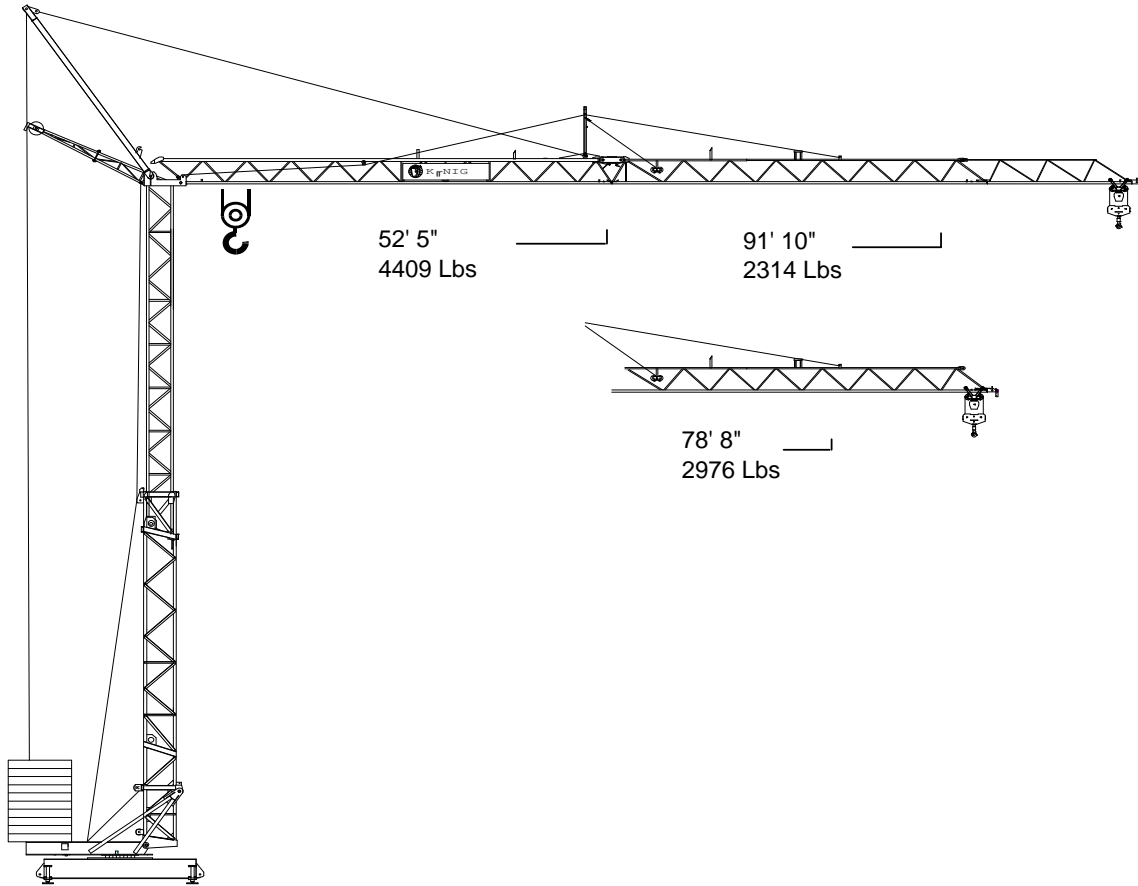


# Koenig K 28 S-2

## Self-erecting Crane



The crane system with quality  
in every detail

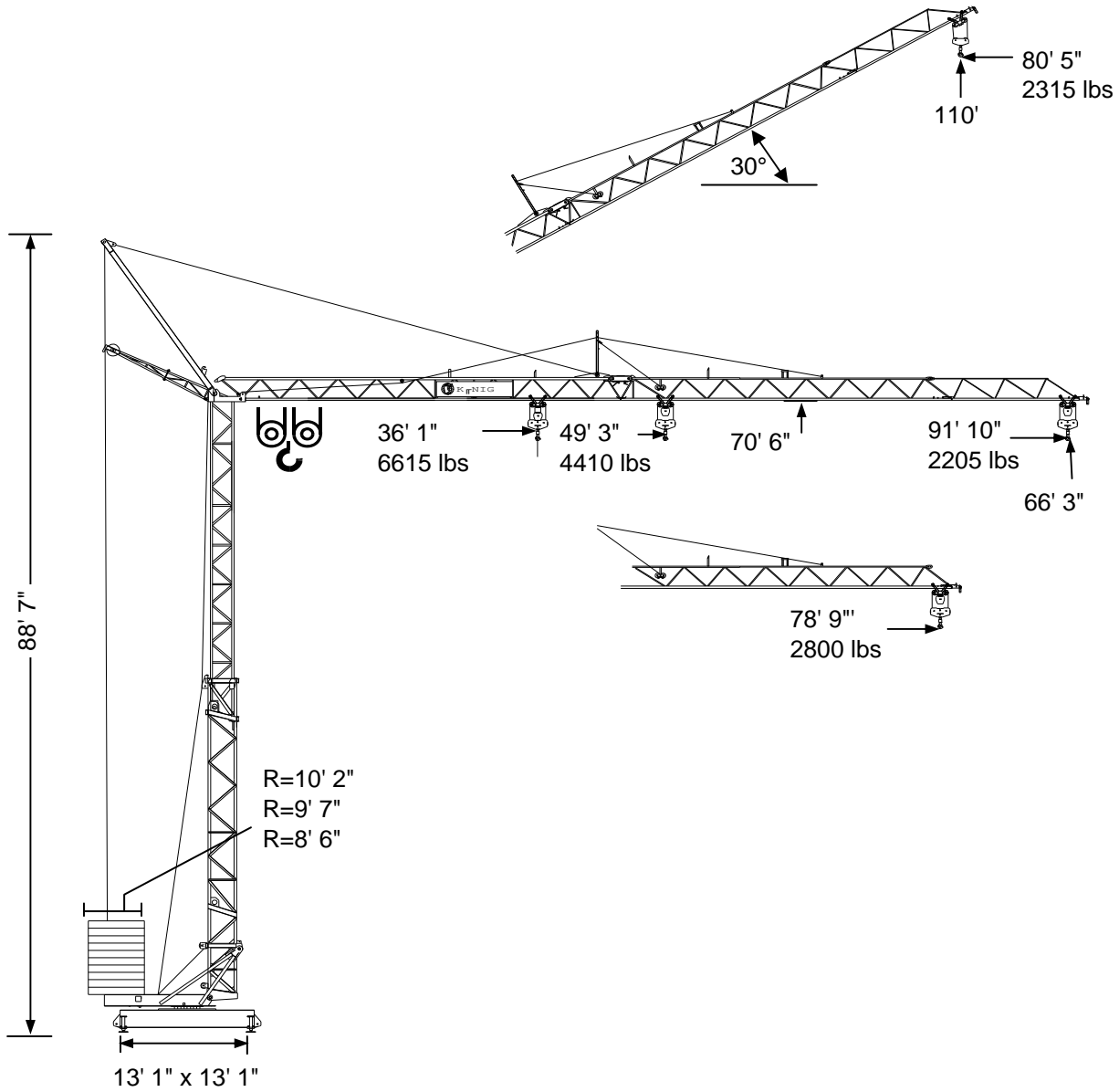


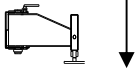
DIN 15018 - H1 - B3



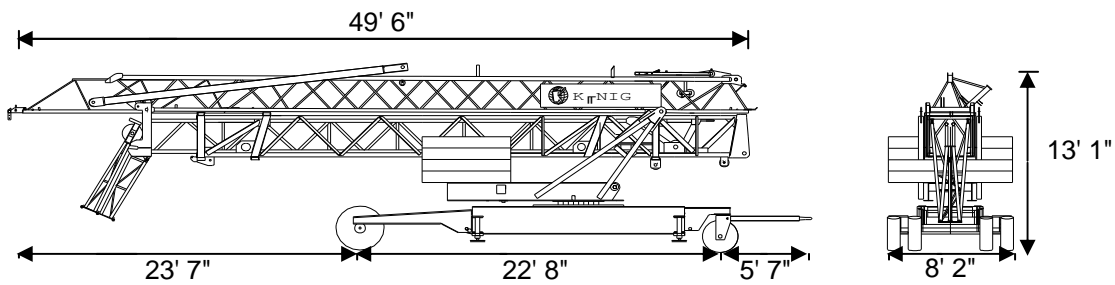
**KÖNIG-KRANE®**

# K 28 S-2 Technical data







	In service	Out of service
Reactions	15.5 T	13 T





## Transport



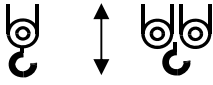

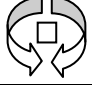
# K 28 S-2 Technical data

## Radius and capacity

Radius		max capacity		ft x lbs											
ft	0°	T	ft	33	39	46	52	59	66	72	79	82	85	89	92
92		2.2	52	4410	4410	4410	4410	3946	3483	3108	2800	2668	2535	2425	2315
79		2.2	56	4410	4410	4410	4410	4211	3704	3307	2975				
30°		Radius (ft)		29	35	40	46	52	57	63	69	72	74	77	80
30°		Hook Height (ft)		80	84	87	90	94	97	100	103	105	107	108	110

Radius		max capacity		ft x lbs											
ft	0°	T	ft	33	39	46	52	59	66	72	79	82	85	89	92
92		2.2	49	4410	4410	4410	4365	3770	3329	2954	2668	2535	2425	2315	2205
		3.3	36	6615	6217	5137	4343	3748	3285	2910	2601	2469	2359	2249	2138
79		2.2	52	4410	4410	4410	4410	4056	3571	3175	2866				
		3.3	39	6615	6615	5467	4630	4012	3527	3131	2800				

## Speeds

	Step	ft/min.	lbs	kW
	1	20 - 10	4410 - 6614	3.5
	2	79 - 39	4410 - 6614	9
	3	157-79	2425 - 4850	11
	1	65		1.1
	2	131		1.5
	0 - 1	U/min. sl./min. tr./min.		2.2



Cross section of cable up to

5x10<sup>2</sup>

Operation voltage

460 V

Frequency

60 Hz

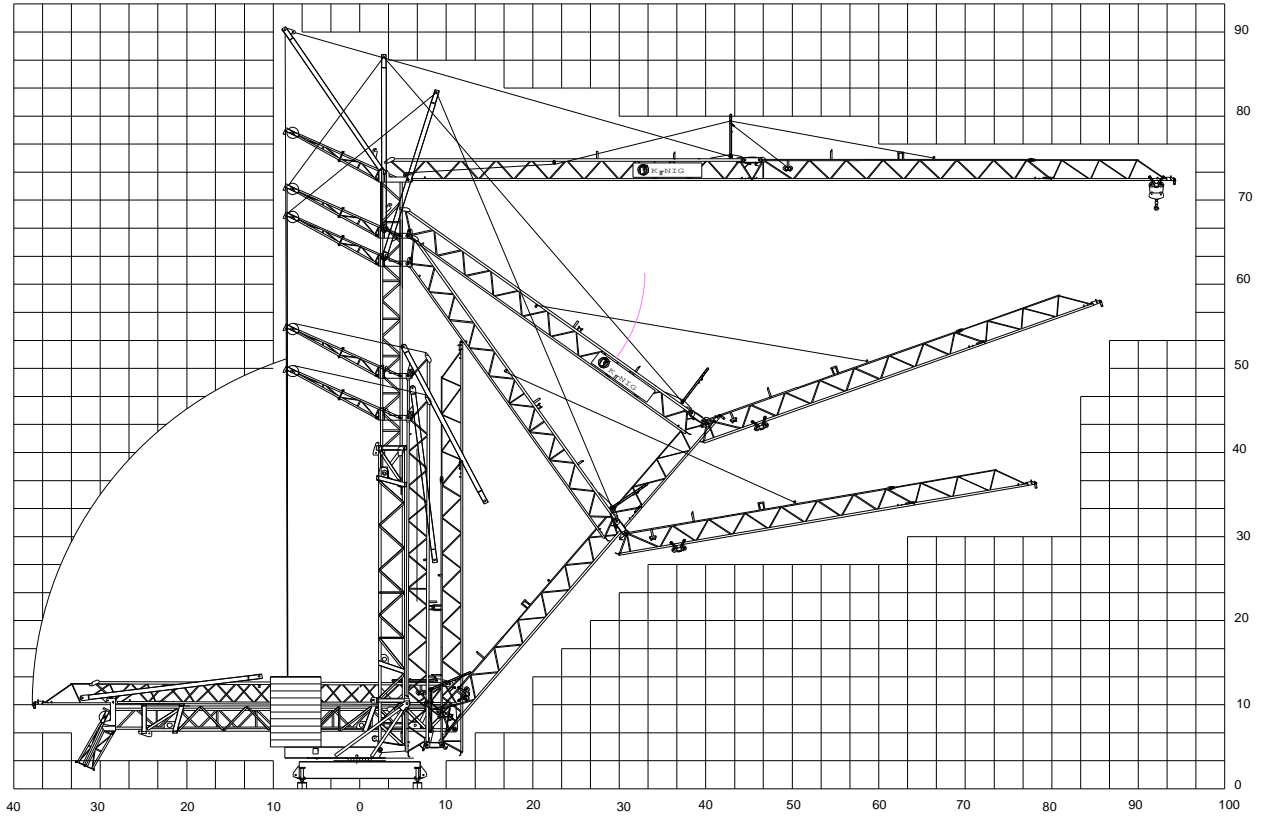
Power requirement

23.2 kVA (14.7 KW)

# K 28 S-2

Technical data

## Erection



## Weight

Central ballast weight	7.5 T	Transport weight approx.	20.6 T	
Counterweight	R=10' 2"	8.5 T	Dead weight approx.	11.4 T
	R=9' 7"	9.9 T		
	R=8' 6"	11.2 T		

### König Baumaschinen-Vertrieb GmbH

Postfach 1164 - D-53563 Asbach/Ww.  
 D-53567 Asbach-Schöneberg  
 Tel.: ++49 (0)2683 / 9172-0  
 Fax: ++49 (0)2683 / 9172-10  
 eMail: info@koenig-krane.de  
 Internet: www.koenig-krane.de

### Contact:

**Boulder Valley Crane Service Inc.**  
**Phone: 303-581-9126**  
**Fax: 303-828-4538**

[www.bouldervalleycrane.com](http://www.bouldervalleycrane.com)