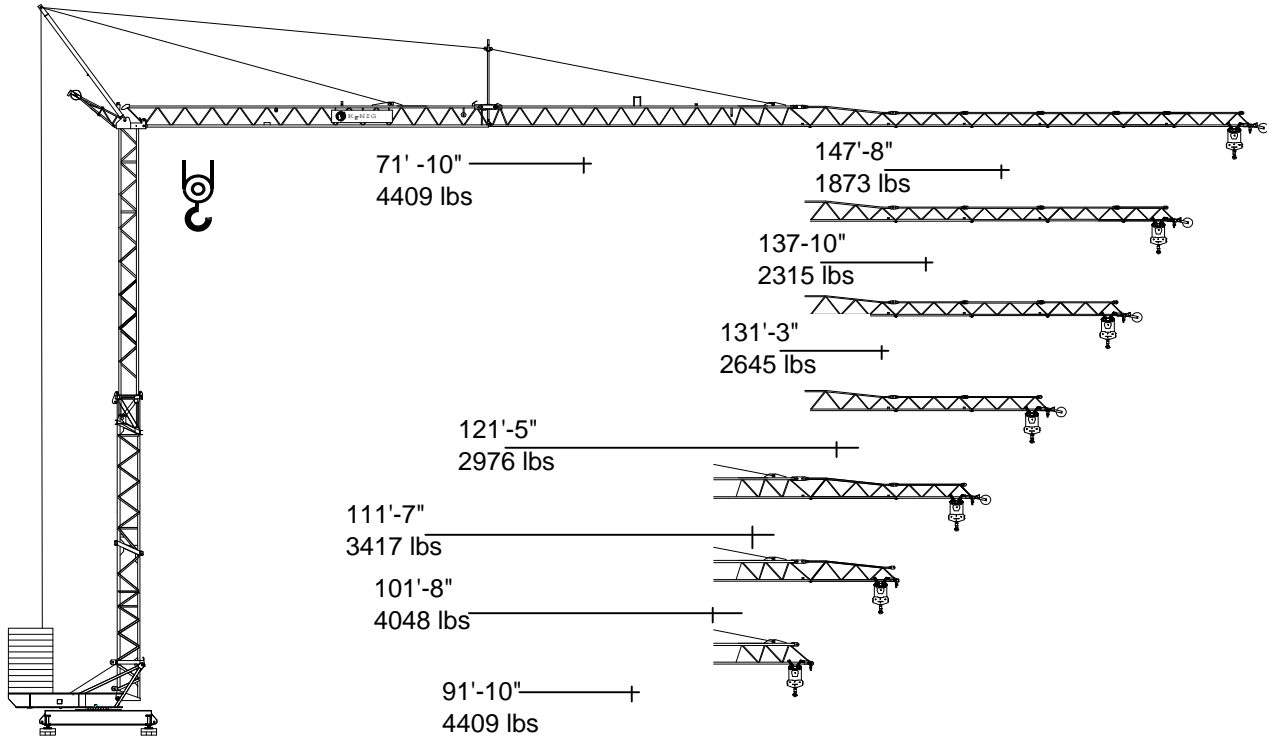


Turmdrehkran K 70

Self-erecting Crane



The crane system with
quality
in every detail

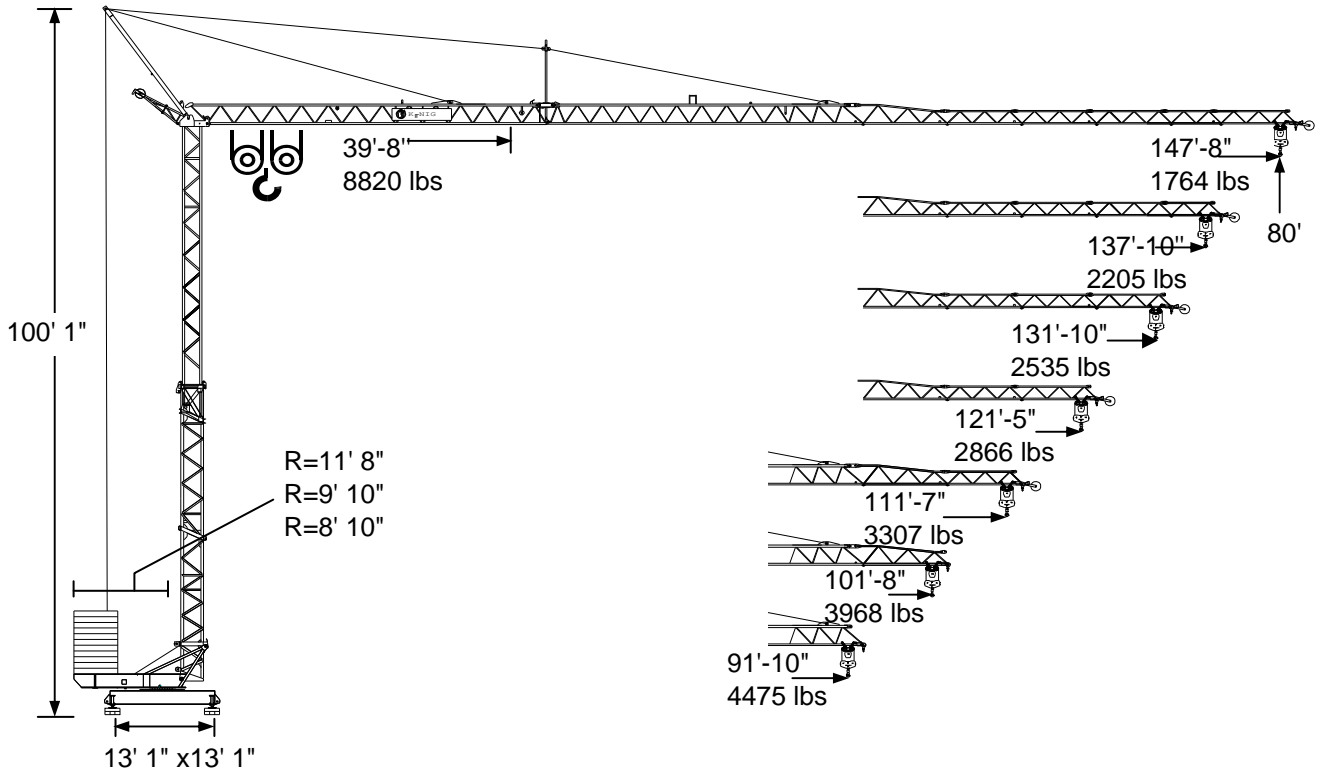
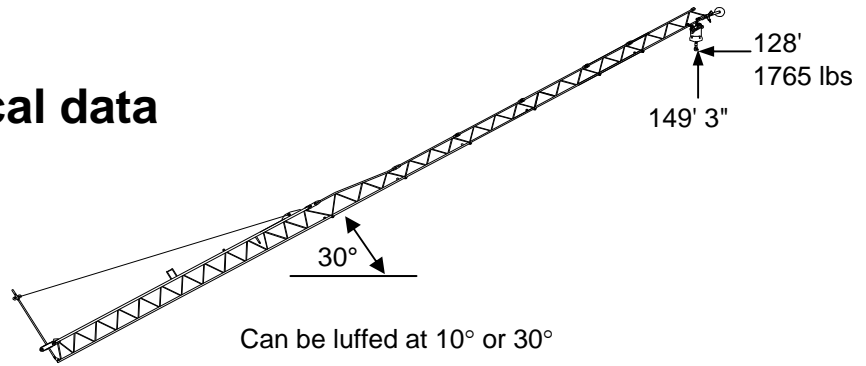


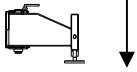
DIN 15018 - H1 - B3



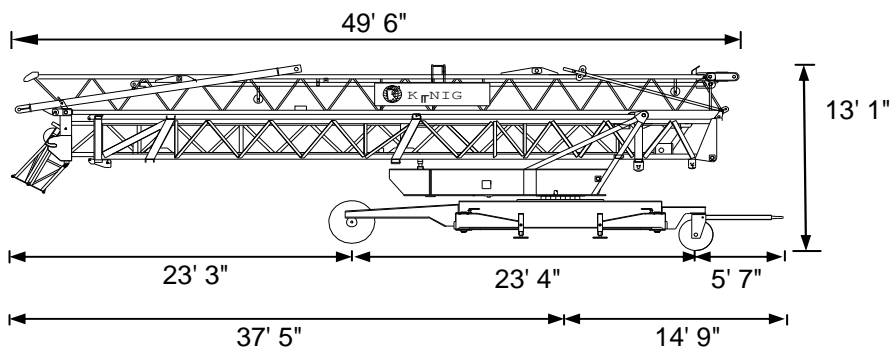
KÖNIG-KRANE®

K70 Technical data







	In service	Out of service
 Reactions	62,832 lbs	52,250 lbs













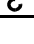

Transport



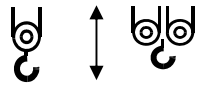
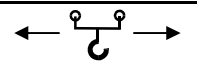

K70 Technical data

Radius and capacity

Radius		max capacity		ft x lbs											
ft	0°	T	ft	59	65	72	78	85	91	101	111	121	131	137	147
		2.2	71	4410	4410	4385	3960	3605	3305	2930	2630	2375	2160	2040	1875
30°		Radius (ft)		52	58	63	69	75	80	89	97	106	114	120	129
30°		Hook Height (ft)		105	109	110	115	118	120	127	132	137	141	145	150
10°		Radius (ft)		58	65	71	78	84	91	100	110	120	129	136	145
10°		Hook Height (ft)		88	89	90	92	93	94	95	97	99	100	102	103

Radius		max capacity		ft x lbs											
ft	0°	T	ft	42	52	62	72	82	91	101	111	121	131	137	147
148		2.2	72	4410	4410	4410	4410	3710	3240	2865	2560	2310	2095	1975	1810
		4.4	40	8060	6265	5100	4275	3665	3195	2820	2520	2265	2050	1930	1765
138		2.2	79	4410	4410	4410	4410	4185	3660	3245	2905	2625	2390	2250	
		4.4	44	8820	7050	5740	4825	4240	3620	3200	2860	2580	2345	2205	
131		2.2	85	4410	4410	4410	4410	4410	3940	3495	3135	2830	2580		
		4.4	46	8820	7565	6170	5185	4460	3900	3450	3090	2790	2535		
121		2.2	87	4410	4410	4410	4410	4410	4045	3590	3220	2910			
		4.4	47	8820	7755	6325	5320	4575	4000	3545	3175	2865			
111		2.2	90	4410	4410	4410	4410	4410	4210	3735	3350				
		4.4	49	8820	8060	6575	5535	4760	4165	3695	3310				
101		2.2	95	4410	4410	4410	4410	4410	4410	4010					
		4.4	52	8820	8625	7045	5935	5110	4475	3970					
91		2.2	93	4410	4410	4410	4410	4410	4410						
		4.4	51.5	8820	8030	6635	5635	4880	4475						

Speeds

	Step	ft/min.	lbs	kW
	1	20 - 10	4400 - 8800	3.5
	2	78 - 39	4400 - 8800	9
	3	157 - 78	2425 - 4400	11
	1	65		1.1
	2	131		1.5
	0-0.75	sl./min.		3.0



Cross section of cable up to
5x10²

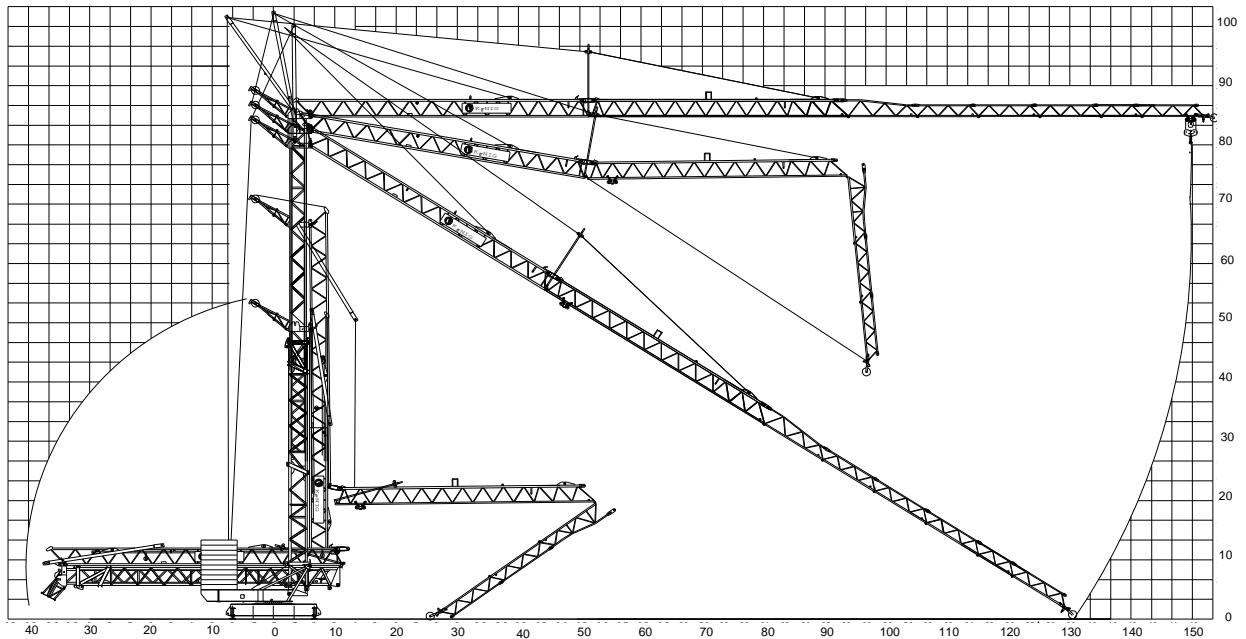
Operation voltage
460 V

Frequency
60 Hz

Power requirement
13.2 kVA (14.7 KW)

K 70 Technical Data

Erection



Weights

Dead weight approx.	38,360 lbs	Transport weight approx.	41,667 lbs
Counterweight	R = 11'-8"	61,619 lbs	
	R = 9'-10"	72,642 lbs	
	R = 8'-10"	78,815 lbs	

König Baumaschinen-Vertrieb GmbH

Postfach 1164 - D-53563 Asbach/Ww.
 D-53567 Asbach-Schöneberg
 Tel.: ++49 (0)2683 / 9172-0
 Fax: ++49 (0)2683 / 9172-10
 eMail: info@koenig-krane.de
 Internet: www.koenig-krane.de

Ihr König-Fachhändler: