

Link-Belt® HC-218A lifting crane capacities — open throat boom PCSA Class 12-470

Refer to Notes page 10.

Boom — tubular: 60" (1.52 m) wide, 50" (1.27 m) deep with open throat top section, 1½" (35 mm) diameter boom pendants, boom live mast, and boom midpoint suspension pendants as required.

Jib — tubular: 32" (0.81 m) wide, 24" (0.61 m) deep.

Counterweights — Refer to charts below.

Mounting — rubber tire mobile base: FMC, 8 x 4 drive 260" (6.60 m) wheelbase 11' 0" (3.35 m) wide.

Counterweights					
"A" upper		"AB" upper		"A" bumper	
Pounds	kilograms	Pounds	kilograms	Pounds	kilograms
21,000	9 526	33,000	14 969	13,500	6 124

Open throat boom and boom + jib machine can lift off ground unassisted, without load ①.

Standard HC-218A must be equipped with the counterweight combinations below when indicated boom and boom + jib lengths are used	Minimum/maximum boom or boom + jib lengths allowed	On outriggers									
		Over rear				Over side					
		Boom		Boom + jib		Boom		Boom + jib			
		Feet	meters	Feet	meters	Feet	meters	Feet	meters		
"A" upper and "A" bumper	Minimum	40	12.19	← Not applicable →				40	12.19	← Not applicable →	
	Maximum	220	67.06	← Not applicable →				180	54.86	← Not applicable →	
"AB" upper and "A" bumper	Minimum	40	12.19	40 + 30	12.19 + 9.14	40	12.19	40 + 30	12.19 + 9.14		
	Maximum	230	70.10	200 + 60	60.96 + 18.29	200	60.96	170 + 60	51.82 + 18.29		
On tires ②											
"A" upper and "A" bumper	Minimum	40	12.19	← Not applicable →				40	12.19	← Not applicable →	
	Maximum	160	48.77	← Not applicable →				120	36.58	← Not applicable →	

① Limited to 95% of available stability with machine standing level on firm supporting surface.

② Air pressure in tires to be 100 p.s.i. (690 kPa).

Machine travel with open throat boom or boom + jib, with no load ①.

Standard HC-218A must be equipped with the counterweight combinations below when the indicated boom and boom + jib lengths are used.	Minimum/maximum boom or boom + jib lengths allowed	On tires ②									
		Jobsite moves at 1 m.p.h. (1.61 km/h), boom at 80° boom angle, upper facing rear only.				Over the road travel at 5 m.p.h. (8.05 km/h), boom horizontal and supported with standard suspension, and boom live mast pinned in 24' (7.32 m) position.					
		Boom		Boom + jib		Boom		Boom + jib			
		Feet	meters	Feet	meters	Feet	meters	Feet	meters		
"A" upper and "A" bumper	Minimum	40	12.19	← Not applicable →				40	12.19	← Not applicable →	
	Maximum	220	67.06	← Not applicable →				130	39.62	← Not applicable →	
"AB" upper and "A" bumper	Minimum	40	12.19	40 + 30	12.19 + 9.14	40	12.19	40 + 30	12.19 + 9.14		
	Maximum	230	70.10	200 + 60	60.96 + 18.29	150	45.72	120 + 60	36.58 + 18.29		

① Limited to 85% of available stability with machine standing level on firm supporting surface.

② Air pressure in front and rear tires to be 100 p.s.i. (690 kPa).

Note: Hook block may be carried only when attached to mounting.

GENERAL INFORMATION ONLY

HC-218 Lifting crane capacities — open throat boom

PCSA Class 70
Refer to Notes page 7.

Boom — tubular: 60" (1.57 m) wide, 50" (1.27 m) deep with open throat top section, 1 3/8" (35 mm) boom pendants, boom live mast, and boom midpoint suspension pendants as required.

Mounting — rubber tire mobile base: FMC, 8 x 4 drive, 260" (6.60 m) wheelbase, 11'0" (3.35 m) wide.

Counterweights — Refer to charts page 1.

HC-218A open throat boom				"A" upper & "A" bumper counterweights						"AB" upper & "A" bumper counterweights					
Length	Radius		Boom point height	On outriggers			On tires (static)			On outriggers only					
	Feet	Meters		Angle	Over rear	Over side and 360° swing	Over rear	Over side	Over rear	Pounds	kilograms	Pounds	kilograms		
40' (12.19 m)	12	3.66	77.7	192,200*	87,180*	192,200*	87,180*	40,097*	30,390*	200,000*	90,718*	200,000*	90,718*		
	13	3.96	76.3	180,100*	81,697*	180,100*	81,697*	38,782*	28,440*	187,300*	84,957*	187,300*	84,957*		
	14	4.27	74.8	169,300*	76,793*	166,500*	75,823*	37,557*	26,716*	176,200*	79,922*	176,200*	79,922*		
	15	4.57	73.3	159,600*	72,393*	155,000*	70,306*	36,423*	25,129*	165,600*	75,341*	165,600*	75,341*		
	16	4.88	71.8	151,100*	68,537*	145,000*	65,770*	35,380*	23,768*	157,300*	71,350*	157,300*	71,350*		
	17	5.18	70.3	143,300*	64,999*	136,500*	61,915*	34,382*	22,498*	149,200*	67,675*	146,000*	66,224*		
	18	5.49	68.7	136,300*	61,824*	129,200*	58,604*	33,475*	21,318*	141,900*	64,364*	138,000*	62,595*		
	19	5.79	67.2	130,000*	58,967*	122,700*	55,655*	32,613*	20,320*	135,300*	61,371*	131,200*	59,511*		
	20	6.10	65.6	124,100*	56,290*	116,900*	53,024*	31,842*	19,368*	129,200*	58,604*	125,000*	56,699*		
	25	7.62	58.5	101,100*	48,858*	89,000*	40,369*	24,176*	14,288*	105,300*	47,763*	101,500*	46,039*		
	30	9.14	48.5	85,100*	38,600*	65,500*	29,710*	19,186*	11,113*	88,700*	39,017*	88,700*	39,017*		
	35	10.67	38.0	71,300*	32,341*	51,400*	23,314*	15,739*	8,981*	76,300*	34,609*	76,300*	34,609*		
	40	12.19	24.1	58,500*	26,535*	41,900*	19,005*	13,244*	7,393*	60,800*	27,578*	60,800*	27,578*		
	50' (15.24 m)	12	3.66	80.2	191,800*	86,999*	191,800*	86,999*	39,916*	30,299*	197,000*	89,357*	197,000*	89,357*	
		13	3.96	79.0	179,700*	81,510*	179,700*	81,510*	38,600*	28,349*	186,900*	84,776*	186,900*	84,776*	
		14	4.27	77.9	168,900*	76,611*	166,300*	75,432*	37,376*	26,580*	175,800*	79,741*	175,800*	79,741*	
		15	4.57	76.7	159,200*	72,211*	154,800*	70,216*	36,242*	25,038*	165,800*	75,205*	165,800*	75,205*	
		16	4.88	75.5	150,800*	68,401*	144,800*	65,880*	35,198*	23,632*	156,900*	71,168*	156,900*	71,168*	
		17	5.18	74.3	143,000*	64,863*	136,300*	61,824*	34,200*	22,362*	148,800*	67,494*	145,800*	66,133*	
		18	5.49	73.1	135,900*	61,643*	129,100*	58,558*	33,293*	21,228*	141,500*	64,183*	137,800*	62,505*	
19		5.79	71.9	129,700*	58,830*	122,500*	55,565*	32,477*	20,234*	135,000*	61,234*	131,000*	59,420*		
20		6.10	70.7	123,800*	56,154*	116,700*	52,934*	31,660*	19,277*	128,900*	58,468*	124,800*	56,608*		
25		7.62	64.5	100,900*	45,767*	89,400*	40,851*	24,221*	14,333*	105,100*	47,672*	101,400*	45,994*		
30		9.14	58.0	84,900*	38,509*	68,400*	29,846*	19,186*	11,158*	88,500*	40,142*	88,500*	40,142*		
35		10.67	50.9	71,500*	32,431*	51,600*	23,405*	15,785*	9,026*	74,500*	33,792*	74,500*	33,792*		
40		12.19	43.1	58,800*	26,671*	42,200*	19,141*	13,290*	7,438*	64,200*	29,120*	64,200*	29,120*		
50		15.24	21.6	42,800*	19,413*	30,300*	13,743*	9,888*	5,307*	48,300*	21,908*	48,300*	21,908*		
60' (18.29 m)		13	3.96	80.9	179,600*	81,465*	179,600*	81,465*	38,509*	28,304*	182,400*	82,739*	182,400*	82,739*	
		14	4.27	79.9	168,700*	76,521*	166,400*	75,477*	37,239*	26,500*	175,600*	79,650*	175,600*	79,650*	
		15	4.57	78.9	159,100*	72,166*	154,900*	70,261*	36,105*	25,038*	165,600*	75,114*	165,600*	75,114*	
		16	4.88	78.0	150,600*	68,311*	144,800*	65,880*	35,062*	23,632*	156,800*	71,123*	156,800*	71,123*	
		17	5.18	77.0	142,800*	64,773*	136,300*	61,824*	34,170*	22,362*	148,700*	67,449*	145,800*	66,133*	
		18	5.49	76.0	135,900*	61,643*	129,100*	58,558*	33,202*	21,182*	141,400*	64,137*	137,900*	62,550*	
	19	5.79	75.0	129,500*	58,740*	122,600*	55,610*	32,341*	20,230*	134,900*	61,189*	131,000*	59,420*		
	20	6.10	74.0	123,700*	56,109*	116,700*	52,934*	31,524*	19,277*	128,800*	58,422*	124,800*	56,608*		
	25	7.62	69.0	100,700*	45,676*	89,900*	40,777*	24,312*	14,424*	104,900*	47,581*	101,300*	45,948*		
	30	9.14	63.8	84,800*	38,464*	66,200*	30,027*	19,277*	11,203*	88,300*	40,052*	88,300*	40,052*		
	35	10.67	58.3	71,800*	32,567*	51,900*	23,541*	15,830*	9,071*	75,900*	34,427*	75,900*	34,427*		
	40	12.19	52.5	59,000*	26,762*	42,500*	19,277*	13,335*	7,484*	66,600*	30,209*	66,600*	30,209*		
	50	15.24	39.2	43,000*	19,504*	30,500*	13,834*	9,933*	5,352*	48,800*	22,135*	48,800*	22,135*		
	60	18.29	19.7	33,300*	15,104*	23,300*	10,568*	7,711*	3,946*	36,000*	16,420*	36,000*	16,420*		
	70' (21.34 m)	15	4.57	80.5	158,500*	71,894*	154,400*	70,034*	35,879*	24,811*	160,000*	72,574*	160,000*	72,574*	
		16	4.88	79.7	150,100*	68,084*	144,400*	65,498*	34,835*	23,405*	155,600*	70,578*	155,600*	70,578*	
		17	5.18	78.9	142,300*	64,546*	135,900*	61,643*	33,883*	22,180*	148,200*	67,232*	145,400*	65,952*	
		18	5.49	78.0	135,500*	61,461*	128,700*	58,377*	32,916*	21,007*	140,900*	63,911*	137,400*	62,323*	
		19	5.79	77.2	129,100*	58,558*	122,200*	55,428*	32,174*	20,048*	134,400*	60,962*	130,600*	59,239*	
		20	6.10	76.4	123,200*	55,882*	116,300*	52,752*	31,297*	19,096*	128,300*	58,195*	124,400*	56,426*	

① ② ③ — Refer to page 7.

GENERAL INFORMATION ONLY

HC-218A open throat boom				"A" upper & "A" bumper counterweights												"AB" upper & "A" bumper counterweights											
Length	Radius		Angle Degrees	Boom point height		On outriggers						On tires (static)						On outriggers only									
	Feet	meters		Feet	meters	Pounds	kilograms	Over side and 360° swing	Pounds	kilograms	Over rear	Pounds	kilograms	Over side	Pounds	kilograms	Over rear	Pounds	kilograms	Over side and 360° swing	Pounds	kilograms					
70' (21.34 m)	25	7.62	72.1	74' 0"	22.54	100,300*	45,495*	90,000	40,823	53,400	24,221	31,700	14,378	104,500*	47,400*	101,000*	45,812*	77,900	35,334	87,900*	39,870*	77,900	35,334				
	30	9.14	67.8	72' 2"	21.99	84,400*	38,283*	66,200	30,027	42,300	19,186	24,600	11,158	87,900*	39,870*	77,900	35,334	61,300	27,770	75,600*	34,291*	61,300	27,770				
	35	10.67	63.3	69' 10"	21.29	71,800	32,567	51,900	23,541	34,700	15,739	19,900	9,026	66,200*	30,027*	50,200	22,770	49,000	22,270	66,200*	30,027*	50,200	22,770				
	40	12.19	58.6	67' 1"	20.45	59,000	26,761	42,400	19,232	29,200	13,244	16,400	7,438	48,800	22,135	36,400	16,510	45,000	20,450	48,800	22,135	36,400	16,510				
	50	15.24	48.4	59' 8"	18.19	42,900	19,459	30,500	13,834	21,800	9,888	11,700	5,307	38,700	17,236	28,000	12,700	12,700	38,700	17,236	28,000	12,700	12,700				
	60	18.29	36.2	48' 8"	14.84	33,300	15,104	23,300	10,568	17,000	7,711	8,600	3,902	30,700	13,925	22,400	10,160	30,700	13,925	22,400	10,160	22,400	10,160				
	70	21.34	18.2	29' 2"	8.90	26,800	12,156	18,500	8,391	13,500	6,123	6,400	2,902	26,800	12,156	18,500	8,391	26,800	12,156	18,500	8,391	26,800	12,156				
	80	24.38	17.0	30' 9"	9.37	22,000	10,979	14,900	6,758	10,900	4,944	4,700	2,131	22,000	10,979	14,900	6,758	22,000	10,979	14,900	6,758	22,000	10,979				
	90	27.43	16.0	32' 2"	9.82	18,400	8,346	12,100	5,488	8,700	3,946	3,300	1,496	18,400	8,346	12,100	5,488	18,400	8,346	12,100	5,488	18,400	8,346				
	100	30.48	15.2	33' 7"	10.23	15,500	7,030	9,900	4,490	7,500	3,175	2,100	952	15,500	7,030	9,900	4,490	15,500	7,030	9,900	4,490	15,500	7,030				
80' (24.38 m)	17	5.18	80.3	86' 2"	26.27	141,600*	64,228*	135,700*	61,552*	74,100*	33,611*	48,400*	21,953*	141,600*	64,228*	141,600*	64,228*	138,800*	62,958*	138,800*	62,958*	138,800*	62,958*				
	18	5.49	79.6	86' 0"	26.22	134,900*	61,189*	128,300*	58,195*	72,100*	32,704*	45,900*	20,819*	134,900*	61,189*	134,900*	61,189*	133,900*	60,736*	133,900*	60,736*	133,900*	60,736*				
	19	5.79	78.8	85' 10"	26.16	128,500*	58,286*	121,700*	55,202*	70,200*	31,842*	43,800*	19,867*	128,500*	58,286*	128,500*	58,286*	127,800*	57,969*	127,800*	57,969*	127,800*	57,969*				
	20	6.10	78.1	85' 8"	26.10	122,700*	55,655*	115,900*	52,571*	68,500*	31,071*	41,700*	18,914*	122,700*	55,655*	122,700*	55,655*	121,000*	54,700*	121,000*	54,700*	121,000*	54,700*				
	25	7.62	74.4	84' 5"	25.73	99,800*	45,268*	90,000	40,823	53,200	24,131	31,500	14,288	99,800*	45,268*	104,000*	47,173*	104,000*	47,173*	104,000*	47,173*	104,000*	47,173*				
	30	9.14	70.7	82' 10"	25.25	83,900*	38,056*	66,200	30,027	42,100	19,096	24,400	11,067	83,900*	38,056*	87,500*	39,689*	87,500*	39,689*	87,500*	39,689*	87,500*	39,689*				
	35	10.67	66.8	80' 11"	24.65	71,600	32,477	51,800	23,496	34,500	15,648	19,700	8,935	71,600	32,477	74,900*	33,974*	74,900*	33,974*	74,900*	33,974*	74,900*	33,974*				
	40	12.19	62.9	78' 6"	23.94	58,900	26,716	42,300	19,186	29,000	13,154	16,200	7,348	58,900	26,716	64,400*	29,211*	64,400*	29,211*	64,400*	29,211*	64,400*	29,211*				
	50	15.24	54.5	72' 5"	22.08	42,800	19,413	30,300	13,743	21,600	9,797	11,500	5,216	42,800	19,413	48,600	22,044	48,600	22,044	48,600	22,044	48,600	22,044				
	60	18.29	45.1	64' 0"	19.50	33,100	15,013	23,100	10,477	16,800	7,620	8,400	3,810	33,100	15,013	30,600	13,879	30,600	13,879	30,600	13,879	30,600	13,879				
70	21.34	33.8	51' 10"	15.80	26,000	12,065	18,400	8,346	13,400	6,078	6,300	2,857	26,000	12,065	25,400	11,521	25,400	11,521	25,400	11,521	25,400	11,521					
80	24.38	17.0	30' 9"	9.37	22,000	10,979	14,900	6,758	10,900	4,944	4,700	2,131	22,000	10,979	25,400	11,521	25,400	11,521	25,400	11,521	25,400	11,521					
90	27.43	16.0	32' 2"	9.82	18,400	8,346	12,100	5,488	8,700	3,946	3,300	1,496	18,400	8,346	21,300	9,661	21,300	9,661	21,300	9,661	21,300	9,661					
100	30.48	15.2	33' 7"	10.23	15,500	7,030	9,900	4,490	7,500	3,175	2,100	952	15,500	7,030	21,300	9,661	21,300	9,661	21,300	9,661	21,300	9,661					
90' (27.43 m)	18	5.49	80.7	96' 2"	29.31	127,700*	57,923*	127,700*	57,923*	127,700*	57,923*	127,700*	57,923*	127,700*	57,923*	127,700*	57,923*	127,700*	57,923*	127,700*	57,923*	127,700*	57,923*				
	19	5.79	80.1	96' 0"	29.26	125,500*	56,925*	121,200*	54,975*	69,700*	31,615*	43,400*	19,685*	125,500*	56,925*	125,500*	56,925*	125,500*	56,925*	125,500*	56,925*	125,500*	56,925*				
	20	6.10	79.4	95' 10"	29.21	122,100*	55,383*	115,400*	52,344*	67,900*	30,798*	41,200*	18,688*	122,100*	55,383*	123,300*	55,927*	123,300*	55,927*	123,300*	55,927*	123,300*	55,927*				
	25	7.62	76.2	94' 9"	28.88	99,300*	45,041*	89,900	40,777	53,000	24,040	31,300	14,197	99,300*	45,041*	103,500*	46,946*	103,500*	46,946*	103,500*	46,946*	103,500*	46,946*				
	30	9.14	72.9	93' 4"	28.46	83,500*	37,874*	66,100	29,982	41,900	19,005	24,200	10,976	83,500*	37,874*	87,000*	39,462*	87,000*	39,462*	87,000*	39,462*	87,000*	39,462*				
	35	10.67	69.5	91' 8"	27.94	71,500	32,431	51,700	23,450	34,300	15,558	19,500	8,845	71,500	32,431	73,100*	33,157*	73,100*	33,157*	73,100*	33,157*	73,100*	33,157*				
	40	12.19	66.1	89' 7"	27.32	58,700	26,825	42,200	19,141	28,800	13,063	16,000	7,257	58,700	26,825	62,800*	28,485*	62,800*	28,485*	62,800*	28,485*	62,800*	28,485*				
	50	15.24	58.9	84' 5"	25.73	42,600	19,323	30,200	13,698	21,400	9,706	11,300	5,125	42,600	19,323	47,900*	21,727*	47,900*	21,727*	47,900*	21,727*	47,900*	21,727*				
	60	18.29	51.1	77' 5"	23.59	32,900	14,923	23,000	10,432	16,600	7,529	8,200	3,719	32,900	14,923	37,000	17,100	37,000	17,100	37,000	17,100	37,000	17,100				
	70	21.34	42.4	68' 0"	20.72	26,500	12,020	18,200	8,255	13,200	5,987	6,100	2,766	26,500	12,020	30,400	13,789	30,400	13,789	30,400	13,789	30,400	13,789				
80	24.38	31.8	54' 9"	16.69	21,900	9,933	14,800	6,713	10,700	4,853	4,500	2,041	21,900	9,933	25,200	11,430	25,200	11,430	25,200	11,430	25,200	11,430					
90	27.43	16.0	32' 2"	9.82	18,400	8,346	12,100	5,488	8,700	3,946	3,300	1,496	18,400	8,346	21,300	9,661	21,300	9,661	21,300	9,661	21,300	9,661					
100	30.48	15.2	33' 7"	10.23	15,500	7,030	9,900	4,490	7,500	3,175	2,100	952	15,500	7,030	15,100	6,849	15,100	6,849	15,100	6,849	15,100	6,849					
100' (30.48 m)	20	6.10	80.5	106' 0"	32.30	114,900*	52,117*	114,900*	52,117*	67,600*	30,662*	40,800*	18,506*	114,900*	52,117*	114,900*	52,117*	103,000*	46,720*	103,000*	46,720*	103,000*	46,720*				
	25	7.62	77.6	105' 0"	32.01	98,800*	44,814*	89,900	40,777	52,700	23,904	31,100	14,106	98,800*	44,814*	99,700*	45,223*	99,700*	45,223*	99,700*	45,223*	99,700*	45,223*				
	30	9.14	74.6	103' 9"	31.63	83,000*	37,648*	65,900	29,891	41,700	18,914	23,900	10,840	83,000*	37,648*	86,600*	39,281*	86,600*	39,281*	86,600*	39,281*	86,600*	39,281*				
	35	10.67	71.6	102' 3"	31.17	71,100*	32,250*	51,500	23,360	34,000	15,422	19,200	8,708	71,100*	32,250*	71,700*	32,522*	71,700*	32,522*	71,700*	32,522*	71,700*	32,522*				
	40	12.19	68.6	100' 5"	30.62	58,500	26,535	42,000	19,050	28,500	12,927	15,700	7,121	58,500	26,535	61,500*	27,895*	61,500*	27,895*	61,500*	27,895*	61,500*	27,895*				
	50	15.24	62.3	95' 11"	29.22	42,500	19,277	30,000	13,607	21,200	9,616	11,000	4,989	42,500	19,277	46,700*	21,182*	46,700*	21,182*	46,700*	21,182*	46,700*	21,182*				
	60	18.29	55.6	89' 10"	27.39	32,700	14,832	22,700	10,296	16,300	7,393	8,000	3,628	32,700													

218A open throat boom

Length	Radius		Boom point height		On outriggers				On tires (static)				"AB" upper & "A" bumper counterweights							
	Feet		meters		Degrees		Angle		Over rear		Over side and 360° swing		Over rear		Over side		Over rear		Over side and 360° swing	
	Feet	meters	Feet	meters	Feet	meters	Pounds	kilograms	Pounds	kilograms	Pounds	kilograms	Pounds	kilograms	Pounds	kilograms	Pounds	kilograms	Pounds	kilograms
120' (36.58 m)	25	7.62	125'	5"	79.7	36.22	89,500*	40,596*	52,400	23,768	30,800	13,970	89,500*	40,596*	83,800*	38,011*	89,500*	40,596*	83,800*	38,011*
	30	9.14	124'	5"	77.2	37.91	82,200*	37,285*	41,300	18,733	23,600	10,704	41,300	18,733	69,600*	31,570*	41,300	18,733	69,600*	31,570*
	35	10.67	123'	2"	74.8	37.53	69,600*	31,570*	33,700	15,286	18,900	8,572	33,700	15,286	59,600*	27,034*	33,700	15,286	59,600*	27,034*
	40	12.19	121'	8"	72.3	37.08	58,300*	26,444*	28,200	12,791	15,400	6,985	28,200	12,791	45,400*	20,593*	28,200	12,791	45,400*	20,593*
	50	15.24	118'	0"	67.2	35.96	42,200	19,141*	20,800	9,434	10,700	4,853	20,800	9,434	36,300*	16,465*	20,800	9,434	36,300*	16,465*
	60	18.29	113'	3"	61.9	34.51	32,500	14,741*	16,000	7,257	7,600	3,447	16,000	7,257	29,800*	13,517*	16,000	7,257	29,800*	13,517*
	70	21.34	107'	3"	56.3	32.69	26,000	11,793*	12,600	5,715	5,500	2,494	12,600	5,715	20,900*	9,480*	12,600	5,715	20,900*	9,480*
	80	24.38	104'	5"	50.4	30.42	21,500	9,752*	10,100	4,581	3,900	1,224	10,100	4,581	17,900*	8,119*	10,100	4,581	17,900*	8,119*
	90	27.43	100'	6"	43.9	27.59	18,000	8,164*	8,200	3,719	2,700	—	8,200	3,719	15,300	6,939*	8,200	3,719	15,300	6,939*
	100	30.48	98'	8"	36.5	23.98	15,200	6,894*	6,700	3,039	—	—	6,700	3,039	13,300	6,032*	6,700	3,039	13,300	6,032*
	110	33.53	96'	8"	27.4	19.09	13,100	5,942*	5,400	2,449	—	—	5,400	2,449	11,600	5,261*	5,400	2,449	11,600	5,261*
	120	36.58	93'	1"	11.01	11.01	11,300	5,125*	4,400	1,995	—	—	4,400	1,995	10,000	4,535*	4,400	1,995	10,000	4,535*
130' (39.62 m)	25	7.62	135'	7"	80.5	41.32	82,900*	37,602*	52,200	23,677	30,600	13,879	52,200	23,677	82,900*	37,602*	82,900*	37,602*	82,900*	37,602*
	30	9.14	134'	7"	78.2	41.03	77,100*	34,971*	41,200	18,688	23,400	10,614	41,200	18,688	77,100*	34,971*	77,100*	34,971*	77,100*	34,971*
	35	10.67	133'	6"	76.0	40.68	68,800*	31,207*	33,500	15,195	18,800	8,527	33,500	15,195	68,800*	31,207*	68,800*	31,207*	68,800*	31,207*
	40	12.19	132'	1"	73.7	40.27	58,200	26,399*	28,000	12,700	15,300	6,939	28,000	12,700	58,200	26,399*	58,200	26,399*	58,200	26,399*
	50	15.24	128'	9"	69.0	38.24	42,100	19,096*	20,700	9,389	10,500	4,762	20,700	9,389	45,200*	20,502*	20,700	9,389	45,200*	20,502*
	60	18.29	124'	5"	64.2	37.93	32,300	14,651*	15,800	7,166	7,500	3,401	15,800	7,166	35,700*	16,793*	15,800	7,166	35,700*	16,793*
	70	21.34	119'	1"	59.2	36.29	25,800	11,702*	12,400	5,624	5,300	2,404	12,400	5,624	29,200*	13,244*	25,800	11,702*	29,200*	13,244*
	80	24.38	112'	5"	54.0	34.28	21,300	9,661*	9,900	4,490	3,800	1,723	9,900	4,490	24,400*	11,067*	21,300	9,661*	24,400*	11,067*
	90	27.43	104'	5"	48.3	31.82	17,800	8,073*	8,000	3,628	2,500	1,133	8,000	3,628	20,700	9,389*	17,800	8,073*	20,700	9,389*
	100	30.48	100'	5"	42.1	28.79	15,100	6,849*	6,500	2,948	—	—	6,500	2,948	17,700	8,028*	15,100	6,849*	17,700	8,028*
	110	33.53	98'	3"	33.7	25.90	12,900	5,851*	5,200	2,358	—	—	5,200	2,358	15,300	6,939*	12,900	5,851*	15,300	6,939*
	120	36.58	95'	0"	24.96	24.96	11,100	5,034*	4,200	1,905	—	—	4,200	1,905	13,300	6,032*	11,100	5,034*	13,300	6,032*
130	39.62	93'	4"	11.37	11.37	9,600	4,354*	3,300	1,496	—	—	3,300	1,496	11,600	5,261*	9,600	4,354*	11,600	5,261*	
140' (42.67 m)	30	9.14	144'	10"	79.1	44.14	70,700*	32,068*	41,000	18,597	23,200	10,523	41,000	18,597	70,700*	32,068*	70,700*	32,068*	70,700*	32,068*
	35	10.67	143'	9"	77.0	43.82	62,800*	28,485*	33,300	15,104	18,600	8,436	33,300	15,104	62,800*	28,485*	62,800*	28,485*	62,800*	28,485*
	40	12.19	142'	6"	74.9	43.44	56,600*	25,673*	27,800	12,609	15,100	6,849	27,800	12,609	56,600*	25,673*	56,600*	25,673*	56,600*	25,673*
	50	15.24	139'	5"	70.6	42.49	41,300	19,005*	20,500	9,298	10,300	4,672	20,500	9,298	44,400*	20,139*	44,400*	20,139*	44,400*	20,139*
	60	18.29	135'	5"	66.2	41.28	32,100	14,560*	15,600	7,076	7,300*	3,311	15,600	7,076	35,100*	15,921*	35,100*	15,921*	35,100*	15,921*
	70	21.34	130'	7"	61.6	39.79	25,600	11,611*	12,200	5,533	5,100	2,313	12,200	5,533	28,700*	13,018*	28,700*	13,018*	28,700*	13,018*
	80	24.38	124'	7"	56.9	37.98	21,100	9,570*	9,700	4,399	3,600	1,632	9,700	4,399	23,900*	10,840*	23,900*	10,840*	23,900*	10,840*
	90	27.43	117'	5"	51.8	35.79	17,600	7,983*	7,800	3,538	2,300	1,043	7,800	3,538	20,600	9,344*	20,600	9,344*	20,600	9,344*
	100	30.48	108'	9"	46.4	33.16	14,900	6,758*	6,300	2,857	—	—	6,300	2,857	17,500	7,937*	17,500	7,937*	17,500	7,937*
	110	33.53	105'	3"	40.5	29.94	12,700	5,760*	5,000	2,267	—	—	5,000	2,267	15,100	6,849*	15,100	6,849*	15,100	6,849*
	120	36.58	100'	0"	33.7	25.90	10,900	4,944*	4,000	1,814	—	—	4,000	1,814	13,100	5,942*	13,100	5,942*	13,100	5,942*
	130	39.62	97'	4"	25.2	20.52	9,300	4,309*	3,200	1,451	—	—	3,200	1,451	11,400	5,170*	11,400	5,170*	11,400	5,170*
140	42.67	93'	6"	11.72	11.72	8,200	3,719*	2,400	1,088	—	—	2,400	1,088	10,000	4,535*	10,000	4,535*	10,000	4,535*	
150' (45.72 m)	30	9.14	155'	0"	79.8	47.24	63,000*	28,576*	40,800	18,506	23,000	10,432	40,800	18,506	63,000*	28,576*	63,000*	28,576*	63,000*	28,576*
	35	10.67	154'	0"	77.9	46.94	57,700*	26,172*	33,100	15,013	18,400	8,346	33,100	15,013	57,700*	26,172*	57,700*	26,172*	57,700*	26,172*
	40	12.19	152'	10"	75.9	46.59	52,000*	23,586*	27,600	12,519	14,900	6,758	27,600	12,519	52,000*	23,586*	52,000*	23,586*	52,000*	23,586*
	50	15.24	150'	0"	71.9	45.71	40,800*	18,506*	20,300	9,207	10,100	4,581	20,300	9,207	40,800*	18,506*	40,800*	18,506*	40,800*	18,506*
	60	18.29	146'	4"	67.9	44.59	31,900	14,469*	15,400	6,985	7,100	3,220	15,400	6,985	33,900*	15,376*	33,900*	15,376*	33,900*	15,376*
	70	21.34	141'	10"	63.7	43.22	25,400	11,521*	12,000	5,443	4,900	2,222	12,000	5,443	28,200*	12,791*	28,200*	12,791*	28,200*	12,791*
	80	24.38	136'	5"	59.3	41.57	20,900	9,480*	9,500	4,309	3,300	1,496	9,500	4,309	23,400*	10,614*	23,400*	10,614*	23,400*	10,614*
	90	27.43	129'	11"	54.8	39.59	17,400	7,892*	7,600	3,447	2,100	952	7,600	3,447	20,100*	9,117*	20,100*	9,117*	20,100*	9,117*
	100	30.48	122'	2"	50.0	37.24	14,700	6,667*	6,100	2,766	—	—	6,100	2,766	17,200*	7,801*	17,200*	7,801*	17,200*	7,801*
	110	33.53	113'	0"	44.8	34.44	12,500	5,669*	4,800	2,177	—	—	4,800	2,177	14,800*	6,713*	14,800*	6,713*	14,800*	6,713*
	120	36.58	101'	10"	39.0	31.04	10,800	4,898*	3,800	1,723	—	—	3,800	1,723	12,900	5,851*	12,900	5,851*	12,900	5,851*
	130	39.62	88'	0"	26.81	26.81	9,300	4,218*	3,000	1,360	—	—	3,000	1,360	11,200	5,080*	11,200	5,080*	11,200	5,080*
140	42.67	69'	6"	21.20	21.20	8,000	3,628*	2,200	997	—	—	2,200	997	9,800	4,445*	9,800	4,445*	9,800	4,445*	
150	45.72	39'	7"	12.06	12.06	6,900	3,129*	3,400	1,542	—	—	3,400	1,542	8,600	3,900*	8,600	3,900*	8,600	3,900*	

① ② ③ — Refer to page 7.

GENERAL INFORMATION ONLY

HC-218A open throat boom				"A" upper & "A" bumper counterweights				"AB" upper & "A" bumper counterweights												
Length	Radius		Boom point height	Angle		On outriggers		On tires (static)		On outriggers only										
	Feet	meters		Degrees	Feet	meters	Pounds	kilograms	Pounds	kilograms	Pounds	kilograms								
160' (48.77 m)	30	9.14	80.5	165' 2"	50.33	58,200*	26,399*	18,415	22,800	10,341	58,200*	26,399*	18,415	22,800	10,341	58,200*	26,399*	18,415	22,800	10,341
	35	10.67	78.6	164' 3"	50.05	53,500*	24,267*	14,923	18,200	8,255	53,500*	24,267*	14,923	18,200	8,255	53,500*	24,267*	14,923	18,200	8,255
	40	12.19	76.8	163' 2"	49.72	48,400*	21,953*	12,383	14,700	6,667	48,400*	21,953*	12,383	14,700	6,667	48,400*	21,953*	12,383	14,700	6,667
	45	13.71	73.1	160' 5"	48.90	38,100*	17,281*	9,071	9,900	4,490	38,100*	17,281*	9,071	9,900	4,490	38,100*	17,281*	9,071	9,900	4,490
	50	15.24	69.3	157' 1"	47.87	31,700*	14,378*	7,556	6,800	3,084	31,700*	14,378*	7,556	6,800	3,084	31,700*	14,378*	7,556	6,800	3,084
	60	18.29	65.4	152' 11"	46.60	25,200*	11,430*	5,352	4,700	2,131	25,200*	11,430*	5,352	4,700	2,131	25,200*	11,430*	5,352	4,700	2,131
	70	21.34	61.4	147' 11"	45.07	20,700*	9,389*	4,218	3,100	1,406	20,700*	9,389*	4,218	3,100	1,406	20,700*	9,389*	4,218	3,100	1,406
	80	24.38	57.3	141' 11"	43.27	17,200*	7,801*	3,311	—	—	17,200*	7,801*	3,311	—	—	17,200*	7,801*	3,311	—	—
	90	27.43	53.4	135' 0"	41.14	14,500*	6,577*	2,630	—	—	14,500*	6,577*	2,630	—	—	14,500*	6,577*	2,630	—	—
	100	30.48	49.3	128' 9"	38.64	12,300*	5,579*	2,086	—	—	12,300*	5,579*	2,086	—	—	12,300*	5,579*	2,086	—	—
	110	33.53	45.3	117' 0"	35.67	10,500*	4,762*	1,632	—	—	10,500*	4,762*	1,632	—	—	10,500*	4,762*	1,632	—	—
	120	36.58	41.3	105' 4"	32.10	9,000*	4,082*	1,224	—	—	9,000*	4,082*	1,224	—	—	9,000*	4,082*	1,224	—	—
	130	39.62	37.8	90' 10"	27.68	7,800*	3,538*	907	—	—	7,800*	3,538*	907	—	—	7,800*	3,538*	907	—	—
	140	42.67	34.4	71' 8"	21.85	6,700*	3,039*	—	—	—	6,700*	3,039*	—	—	—	6,700*	3,039*	—	—	—
	150	45.72	31.7	40' 8"	12.38	5,800*	2,630*	—	—	—	5,800*	2,630*	—	—	—	5,800*	2,630*	—	—	—
	160	48.77	29.0	174' 5"	79.3	53.16	49,000*	22,226*	—	—	—	49,000*	22,226*	—	—	49,000*	22,226*	—	—	—
35	10.67	79.9	184' 7"	78.3	56.26	42,900*	19,459*	—	—	—	42,900*	19,459*	—	—	42,900*	19,459*	—	—	—	
40	12.19	78.3	183' 7"	77.6	52.85	42,400*	19,232*	—	—	—	42,400*	19,232*	—	—	42,400*	19,232*	—	—	—	
45	13.71	75.0	181' 3"	74.1	52.08	34,900*	15,830*	—	—	—	34,900*	15,830*	—	—	34,900*	15,830*	—	—	—	
50	15.24	70.6	167' 8"	70.6	51.11	29,500*	13,380*	—	—	—	29,500*	13,380*	—	—	29,500*	13,380*	—	—	—	
60	18.29	67.0	163' 10"	67.0	49.93	23,000*	10,432*	—	—	—	23,000*	10,432*	—	—	23,000*	10,432*	—	—	—	
70	21.34	63.3	159' 2"	63.3	48.51	19,600*	8,890*	—	—	—	19,600*	8,890*	—	—	19,600*	8,890*	—	—	—	
80	24.38	59.4	153' 8"	59.4	46.85	17,000*	7,711*	—	—	—	17,000*	7,711*	—	—	17,000*	7,711*	—	—	—	
90	27.43	55.4	147' 4"	55.4	44.90	14,300*	6,486*	—	—	—	14,300*	6,486*	—	—	14,300*	6,486*	—	—	—	
100	30.48	51.2	139' 10"	51.2	42.63	12,100*	5,488*	—	—	—	12,100*	5,488*	—	—	12,100*	5,488*	—	—	—	
110	33.53	46.7	131' 2"	46.7	39.98	10,300*	4,672*	—	—	—	10,300*	4,672*	—	—	10,300*	4,672*	—	—	—	
120	36.58	41.9	120' 11"	41.9	36.86	8,800*	3,991*	—	—	—	8,800*	3,991*	—	—	8,800*	3,991*	—	—	—	
130	39.62	36.6	108' 8"	36.6	33.13	7,600*	3,447*	—	—	—	7,600*	3,447*	—	—	7,600*	3,447*	—	—	—	
140	42.67	30.5	93' 7"	30.5	28.53	6,500*	2,948*	—	—	—	6,500*	2,948*	—	—	6,500*	2,948*	—	—	—	
150	45.72	23.0	73' 9"	23.0	22.48	5,600*	2,540*	—	—	—	5,600*	2,540*	—	—	5,600*	2,540*	—	—	—	
160	48.77	11.6	41' 8"	11.6	12.70	4,700*	2,131*	—	—	—	4,700*	2,131*	—	—	4,700*	2,131*	—	—	—	
35	10.67	79.9	184' 7"	79.9	56.26	42,900*	19,459*	—	—	—	42,900*	19,459*	—	—	42,900*	19,459*	—	—	—	
40	12.19	78.3	183' 7"	78.3	55.96	39,100*	17,735*	—	—	—	39,100*	17,735*	—	—	39,100*	17,735*	—	—	—	
45	13.71	75.0	181' 3"	75.0	55.24	28,700*	14,651*	—	—	—	28,700*	14,651*	—	—	28,700*	14,651*	—	—	—	
50	15.24	71.7	178' 3"	71.7	54.33	27,400*	12,428*	—	—	—	27,400*	12,428*	—	—	27,400*	12,428*	—	—	—	
60	18.29	68.3	174' 7"	68.3	53.22	20,500*	9,298*	—	—	—	20,500*	9,298*	—	—	20,500*	9,298*	—	—	—	
70	21.34	64.8	170' 3"	64.8	51.90	17,800*	8,073*	—	—	—	17,800*	8,073*	—	—	17,800*	8,073*	—	—	—	
80	24.38	61.3	165' 2"	61.3	50.35	16,100*	7,302*	—	—	—	16,100*	7,302*	—	—	16,100*	7,302*	—	—	—	
90	27.43	57.6	159' 4"	57.6	48.55	14,100*	6,395*	—	—	—	14,100*	6,395*	—	—	14,100*	6,395*	—	—	—	
100	30.48	53.7	152' 6"	53.7	46.47	11,900*	5,397*	—	—	—	11,900*	5,397*	—	—	11,900*	5,397*	—	—	—	
110	33.53	49.7	144' 7"	49.7	44.06	10,100*	4,581*	—	—	—	10,100*	4,581*	—	—	10,100*	4,581*	—	—	—	
120	36.58	45.3	135' 5"	45.3	41.27	8,600*	3,900*	—	—	—	8,600*	3,900*	—	—	8,600*	3,900*	—	—	—	
130	39.62	40.7	124' 8"	40.7	38.00	7,400*	3,356*	—	—	—	7,400*	3,356*	—	—	7,400*	3,356*	—	—	—	
140	42.67	35.5	111' 1"	35.5	34.12	6,300*	2,857*	—	—	—	6,300*	2,857*	—	—	6,300*	2,857*	—	—	—	
150	45.72	29.6	96' 3"	29.6	29.34	5,300*	2,404*	—	—	—	5,300*	2,404*	—	—	5,300*	2,404*	—	—	—	
160	48.77	22.3	75' 9"	22.3	23.09	4,500*	2,041*	—	—	—	4,500*	2,041*	—	—	4,500*	2,041*	—	—	—	
170	51.82	11.3	42' 8"	11.3	13.01	3,800*	1,723*	—	—	—	3,800*	1,723*	—	—	3,800*	1,723*	—	—	—	
180	54.86	80.5	194' 9"	80.5	59.35	38,700*	17,554*	—	—	—	38,700*	17,554*	—	—	38,700*	17,554*	—	—	—	
35	10.67	78.9	193' 10"	78.9	59.07	36,000*	16,329*	—	—	—	36,000*	16,329*	—	—	36,000*	16,329*	—	—	—	
40	12.19	75.8	191' 7"	75.8	58.39	29,800*	13,517*	—	—	—	29,800*	13,517*	—	—	29,800*	13,517*	—	—	—	
50	15.24	72.7	188' 9"	72.7	57.53	25,400*	11,521*	—	—	—	25,400*	11,521*	—	—	25,400*	11,521*	—	—	—	
60	18.29	69.5	185' 4"	69.5	56.49	19,000*	8,618*	—	—	—	19,000*	8,618*	—	—	19,000*	8,618*	—	—	—	
70	21.34	66.3	181' 3"	66.3	55.25	16,900*	7,665*	—	—	—	16,900*	7,665*	—	—	16,900*	7,665*	—	—	—	
80	24.38	62.9	176' 6"	62.9	53.80	15,500*	7,030*	—	—	—	15,500*	7,030*	—	—	15,500*	7,030*	—	—	—	
90	27.43	53.80	170' 6"	53.80	53.80	13,300*	6,032*	—	—	—	13,300*	6,032*	—	—	13,300*	6,032*	—	—	—	

Not applicable

(continued)

GENERAL INFORMATION ONLY

Refer to page 7.

H 3A open throat boom			"A" upper & "A" counterweights				"AB" upper & "A" bumper counterweights										
Length	Radius		Angle Degrees	Boom point height		On outriggers				On tires (static)							
	Feet	meters		Feet	meters	Over rear Pounds	Over rear kilograms	Over side Pounds	Over side kilograms	Over rear Pounds	Over rear kilograms	Over side Pounds	Over side kilograms	Over rear Pounds	Over rear kilograms	Over side and 360° swing Pounds	Over side and 360° swing kilograms
190' (57.91 m)	100	30.48	59.5	171' 0"	52.13	13,900	6,304	8,300	3,764	14,200*	6,441*	11,000	4,989	14,200*	6,441*	11,000	4,989
	110	33.53	55.9	164' 8"	50.20	11,700	5,307	6,700	3,039	12,400*	5,624*	9,100	4,127	12,400*	5,624*	9,100	4,127
	120	36.58	52.2	157' 5"	47.99	9,900	4,490	5,400	2,449	11,100*	5,034*	7,500	3,401	11,100*	5,034*	7,500	3,401
	130	39.62	48.3	149' 1"	45.45	8,400	3,810	4,200	1,905	9,800*	4,445*	6,200	2,812	9,800*	4,445*	6,200	2,812
	140	42.67	44.1	139' 6"	42.52	7,100	3,220	3,300	1,496	8,800*	3,991*	5,100	2,313	8,800*	3,991*	5,100	2,313
	150	45.72	39.6	128' 4"	39.12	6,100	2,766	2,500	1,133	7,000	3,039	4,200	1,905	7,000	3,039	4,200	1,905
	160	48.77	34.5	115' 1"	35.08	5,100	2,313	—	—	6,700	2,630	3,400	1,542	6,700	2,630	3,400	1,542
	170	51.82	28.8	98' 11"	30.14	4,300	1,950	—	—	5,800	2,067	2,700	1,224	5,800	2,067	2,700	1,224
	180	54.86	21.7	77' 8"	23.68	3,600	1,632	—	—	5,000	1,950	—	—	5,000	1,950	—	—
	190	57.91	11.0	43' 8"	13.30	2,900	1,315	—	—	4,300	1,950	—	—	4,300	1,950	—	—
200' (60.96 m)	35	10.67	80.9	204' 10"	62.44	34,900*	15,830*	34,900*	15,830*	34,900*	15,830*	34,900*	15,830*	34,900*	15,830*	34,900*	15,830*
	40	12.19	79.5	204' 0"	62.18	32,700*	14,832*	32,700*	14,832*	32,700*	14,832*	32,700*	14,832*	32,700*	14,832*	32,700*	14,832*
	50	15.24	76.6	201' 10"	61.53	27,300*	12,383*	27,300*	12,383*	27,300*	12,383*	27,300*	12,383*	27,300*	12,383*	27,300*	12,383*
	60	18.29	73.6	199' 2"	60.72	20,500*	9,298*	20,500*	9,298*	20,500*	9,298*	20,500*	9,298*	20,500*	9,298*	20,500*	9,298*
	70	21.34	70.6	196' 0"	59.73	17,200*	7,801*	16,300	7,393	17,200*	7,801*	17,200*	7,801*	17,200*	7,801*	17,200*	7,801*
	80	24.38	67.5	192' 2"	58.56	15,000*	6,803*	12,800	5,805	15,000*	6,803*	15,000*	6,803*	15,000*	6,803*	15,000*	6,803*
	90	27.43	64.4	187' 8"	57.20	13,600*	6,168*	10,200	4,626	13,600*	6,168*	13,600*	6,168*	13,600*	6,168*	13,600*	6,168*
	100	30.48	61.2	182' 6"	55.63	12,500*	5,669*	8,100	3,674	12,500*	5,669*	10,700	4,853	12,500*	5,669*	10,700	4,853
	110	33.53	57.8	176' 8"	53.84	11,100*	5,034*	6,500	2,948	11,100*	5,034*	11,100*	5,034*	11,100*	5,034*	11,100*	5,034*
	120	36.58	54.4	169' 11"	51.79	9,700*	4,399*	5,100	2,313	9,700*	4,399*	9,700*	4,399*	9,700*	4,399*	9,700*	4,399*
130	39.62	50.8	162' 3"	49.46	8,200	3,719	4,000	1,814	8,600*	3,900*	6,000	2,721	8,600*	3,900*	6,000	2,721	
140	42.67	47.0	153' 6"	46.80	6,900	3,129	3,100	1,406	7,000*	3,492*	4,900	2,222	7,000*	3,492*	4,900	2,222	
150	45.72	42.9	143' 6"	43.74	5,800	2,630	2,300	1,043	6,200*	2,812*	3,100	1,406	6,200*	2,812*	3,100	1,406	
160	48.77	38.5	131' 11"	40.20	4,900	2,222	—	—	5,600*	2,540*	—	—	5,600*	2,540*	—	—	
170	51.82	33.6	118' 2"	36.01	4,100	1,859	—	—	4,700	2,131	—	—	4,700	2,131	—	—	
180	54.86	28.1	101' 5"	30.91	3,400	1,542	—	—	4,000	1,814	—	—	4,000	1,814	—	—	
190	57.91	21.2	79' 7"	24.26	2,700	1,224	—	—	3,400	1,542	—	—	3,400	1,542	—	—	
200	60.96	10.7	44' 7"	13.59	2,200	997	—	—	3,400	1,542	—	—	3,400	1,542	—	—	
210' (64.01 m)	40	12.19	80.0	214' 2"	65.27	29,600*	13,426*	29,600*	13,426*	29,600*	13,426*	29,600*	13,426*	29,600*	13,426*	29,600*	13,426*
	50	15.24	77.2	212' 2"	64.66	24,900*	11,294*	24,900*	11,294*	24,900*	11,294*	24,900*	11,294*	24,900*	11,294*	24,900*	11,294*
	60	18.29	74.4	209' 7"	63.89	18,800*	8,527*	18,800*	8,527*	18,800*	8,527*	18,800*	8,527*	18,800*	8,527*	18,800*	8,527*
	70	21.34	71.5	206' 7"	62.95	15,600*	7,076*	15,600*	7,076*	15,600*	7,076*	15,600*	7,076*	15,600*	7,076*	15,600*	7,076*
	80	24.38	68.6	202' 11"	61.85	13,300*	6,032*	12,600	5,715	13,300*	6,032*	13,300*	6,032*	13,300*	6,032*	13,300*	6,032*
	90	27.43	65.7	198' 8"	60.57	11,900*	5,397*	10,000	4,535	11,900*	5,397*	11,900*	5,397*	11,900*	5,397*	11,900*	5,397*
	100	30.48	62.6	193' 10"	59.09	10,900*	4,944*	7,900	3,583	10,900*	4,944*	10,900*	4,944*	10,900*	4,944*	10,900*	4,944*
	110	33.53	59.5	188' 4"	57.41	9,700*	4,399*	6,300	2,857	9,700*	4,399*	9,700*	4,399*	9,700*	4,399*	9,700*	4,399*
	120	36.58	56.3	182' 1"	55.50	8,600*	3,900*	4,900	2,222	8,600*	3,900*	8,600*	3,900*	8,600*	3,900*	8,600*	3,900*
	130	39.62	53.0	175' 0"	53.33	7,600*	3,447*	3,800	1,723	7,600*	3,447*	7,600*	3,447*	7,600*	3,447*	7,600*	3,447*
140	42.67	49.5	166' 11"	50.88	6,700	3,039	2,800	1,270	6,800*	3,084*	4,700	2,131	6,800*	3,084*	4,700	2,131	
150	45.72	45.8	157' 10"	48.10	5,600	2,540	2,000	907	5,400*	2,449*	2,900	1,315	5,400*	2,449*	2,900	1,315	
160	48.77	41.8	147' 5"	44.92	4,700	2,131	—	—	4,900*	2,222*	—	—	4,900*	2,222*	—	—	
170	51.82	37.5	135' 4"	41.25	3,800	1,723	—	—	4,400*	1,995*	—	—	4,400*	1,995*	—	—	
180	54.86	32.8	121' 2"	36.92	3,100	1,406	—	—	3,800	1,723	—	—	3,800	1,723	—	—	
190	57.91	27.4	103' 11"	31.66	2,500	1,133	—	—	3,200	1,451	—	—	3,200	1,451	—	—	
200	60.96	20.7	81' 5"	24.82	—	—	—	—	2,600	1,179	—	—	2,600	1,179	—	—	
210	64.01	10.5	45' 6"	13.88	—	—	—	—	2,600	1,179	—	—	2,600	1,179	—	—	
220' (67.06 m)	40	12.19	80.4	224' 4"	68.37	26,600*	12,065*	26,600*	12,065*	26,600*	12,065*	26,600*	12,065*	26,600*	12,065*	26,600*	12,065*
	50	15.24	77.8	222' 5"	67.78	20,700*	9,389*	20,700*	9,389*	20,700*	9,389*	20,700*	9,389*	20,700*	9,389*	20,700*	9,389*
	60	18.29	75.1	220' 0"	67.05	17,200*	7,801*	17,200*	7,801*	17,200*	7,801*	17,200*	7,801*	17,200*	7,801*	17,200*	7,801*
	70	21.34	72.4	217' 1"	66.16	14,200*	6,441*	14,200*	6,441*	14,200*	6,441*	14,200*	6,441*	14,200*	6,441*	14,200*	6,441*
	80	24.38	69.7	213' 7"	65.11	11,900*	5,397*	11,900*	5,397*	11,900*	5,397*	11,900*	5,397*	11,900*	5,397*	11,900*	5,397*
	90	27.43	66.8	209' 8"	63.90	10,400*	4,717*	9,700	4,399	10,400*	4,717*	10,400*	4,717*	10,400*	4,717*	10,400*	4,717*
	100	30.48	64.0	205' 1"	62.50	9,400*	4,263*	8,600	3,921	9,400*	4,263*	9,400*	4,263*	9,400*	4,263*	9,400*	4,263*
	110	33.53	61.0	199' 10"	60.92	8,600	3,900*	6,000	2,721	8,600	3,900*	8,600	3,900*	8,600	3,900*	8,600	3,900*
	120	36.58	58.0	194' 0"	59.12	7,700*	3,492*	4,700	2,131	7,700*	3,492*	7,700*	3,492*	7,700*	3,492*	7,700*	3,492*

Not applicable

Ⓢ — Refer to page 7.

GENERAL INFORMATION ONLY

HC-218A open throat boom				"A" upper & "A" bumper counterweights				"AB" upper & "A" bumper counterweights						
Length	Radius		Boom point height	On outriggers		On tires (static)		On outriggers only		On outriggers only				
	Feet	meters		Over rear	Over side and 360° swing	Over rear	Over side	Over rear	Over side and 360° swing	Pounds	Kilograms	Pounds	Kilograms	
220' (67.06 m)	130	39.62	187' 4"	57.10	187' 4"	57.10	187' 4"	3 039*	1 632	6 700*	3 039*	1 632	5 500	2 494
	140	42.67	179' 11"	54.89	179' 11"	54.89	179' 11"	2 721*	1 179	6 000*	2 721*	1 179	4 400	1 995
	150	45.72	171' 6"	52.27	171' 6"	52.27	171' 6"	2 449*	—	5 400*	2 449*	—	3 500	1 587
	160	48.77	162' 0"	49.37	162' 0"	49.37	162' 0"	1 995	—	4 800*	1 995	—	2 700	1 224
	170	51.82	151' 2"	46.07	151' 2"	46.07	151' 2"	1 632	—	4 300*	1 632	—	2 000	907
	180	54.86	138' 8"	42.27	138' 8"	42.27	138' 8"	1 315	—	3 900*	1 315	—	—	—
	190	57.91	124' 1"	37.81	124' 1"	37.81	124' 1"	1 043	—	3 600*	1 043	—	—	—
	200	60.96	106' 3"	32.40	106' 3"	32.40	106' 3"	—	—	2 900	—	—	—	—
	210	64.01	83' 3"	25.37	83' 3"	25.37	83' 3"	—	—	2 400	—	—	—	—
	230' (70.10 m)	40	12.19	234' 5"	71.46	234' 5"	71.46	234' 5"	—	—	24 100*	10 931*	—	24 100*
50		15.24	232' 7"	70.90	232' 7"	70.90	232' 7"	—	—	18 700*	8 482*	—	18 700*	8 482*
60		18.29	230' 4"	70.20	230' 4"	70.20	230' 4"	—	—	15 800*	7 166*	—	15 800*	7 166*
70		21.34	227' 6"	69.35	227' 6"	69.35	227' 6"	—	—	13 000*	5 896*	—	13 000*	5 896*
80		24.38	224' 3"	68.35	224' 3"	68.35	224' 3"	—	—	10 700*	4 853*	—	10 700*	4 853*
90		27.43	220' 6"	67.20	220' 6"	67.20	220' 6"	—	—	9 100*	4 127*	—	9 100*	4 127*
100		30.48	216' 2"	65.88	216' 2"	65.88	216' 2"	—	—	8 200*	3 719*	—	8 200*	3 719*
110		33.53	211' 2"	64.38	211' 2"	64.38	211' 2"	—	—	7 200*	3 265*	—	7 200*	3 265*
120		36.58	205' 8"	62.69	205' 8"	62.69	205' 8"	—	—	6 500*	2 948*	—	6 500*	2 948*
130		39.62	199' 5"	60.79	199' 5"	60.79	199' 5"	—	—	5 800*	2 630*	—	5 800*	2 630*
230' (70.10 m)	140	42.67	192' 6"	58.66	192' 6"	58.66	192' 6"	—	—	5 200*	2 358*	—	5 200*	2 404
	150	45.72	184' 8"	56.28	184' 8"	56.28	184' 8"	—	—	4 700*	2 131*	—	4 700*	1 905
	160	48.77	175' 11"	53.61	175' 11"	53.61	175' 11"	—	—	4 200*	1 905*	—	4 200*	1 496
	170	51.82	166' 0"	50.60	166' 0"	50.60	166' 0"	—	—	3 800*	1 723*	—	3 800*	1 088
	180	54.86	154' 10"	47.19	154' 10"	47.19	154' 10"	—	—	3 500*	1 587*	—	3 500*	—
	190	57.91	141' 11"	43.27	141' 11"	43.27	141' 11"	—	—	3 100*	1 406*	—	3 100*	—
	200	60.96	131' 3"	38.67	131' 3"	38.67	131' 3"	—	—	2 700	1 224	—	2 700	—
	210	64.01	108' 8"	33.11	108' 8"	33.11	108' 8"	—	—	2 100	952	—	2 100	—

permitted on boom when machine is equipped with "A" upper and "A" bumper counterweights.

② Measured vertically from center of boom head sheave to ground with machine standing on tires.

③ Capacities for 360° swing applicable only when front center jack and front and rear outriggers are set in proper working position.

GENERAL NOTES — lifting crane capacities; tubular boom with open throat top section.

- The capacities included in this chart are the maximum allowable, and are based on machine standing level on firm supporting surface under ideal job conditions. Capacities are based on 85% of minimum tipping loads unless marked with an asterisk (*).
 - Asterisk indicates capacities are based on factors other than those which would cause a tipping condition.
- Capacities are based on freely suspended loads and make no allowance for such factors as the effect of wind, supporting surface conditions, inflation of tires, and operating speeds. Operator must reduce load ratings accordingly to take such conditions into account. Deduction from rated capacities must be made for weight of jib, hook block, ball/hook, sling, spreader bar, or other suspended gear.
- Boom lengths exceeding 150' (45.72 m) — boom midpoint suspension pendants required.
- Main boom lengths must not exceed 230' (70.10 m).
- For lifting 200,000# (90 720 kg), 10 parts of 7/8" (22 mm) diameter, Type "N" wire rope are required. Check parts of line required for all capacities.
- Jib cannot be used on boom lengths less than 40' (12.19 m) or longer than 200' (60.96 m).
- Refer to charts page 1 when rigging machine with boom and boom plus jib.
- Machine equipped with "AB" upper counterweight — do not swing over side until outriggers have been set.
- Telescopic boom live mast, pinned in the extended (24' — 7.32 m) position, required for all open throat boom capacities.
- Least stable position is over side.
- When handling loads on main load hoist line with jib mounted on boom, reduce rated boom capacities as follows to compensate for jib weights —
 - 30' (9.14 m) jib — 2,000# (907 kg)
 - 45' (13.72 m) jib — 2,400# (1 089 kg)
 - 60' (18.29 m) jib — 3,200# (1 452 kg)
- Capacities apply only to the machine as originally manufactured and normally equipped by FMC Corporation, Cable Crane and Excavator Division.

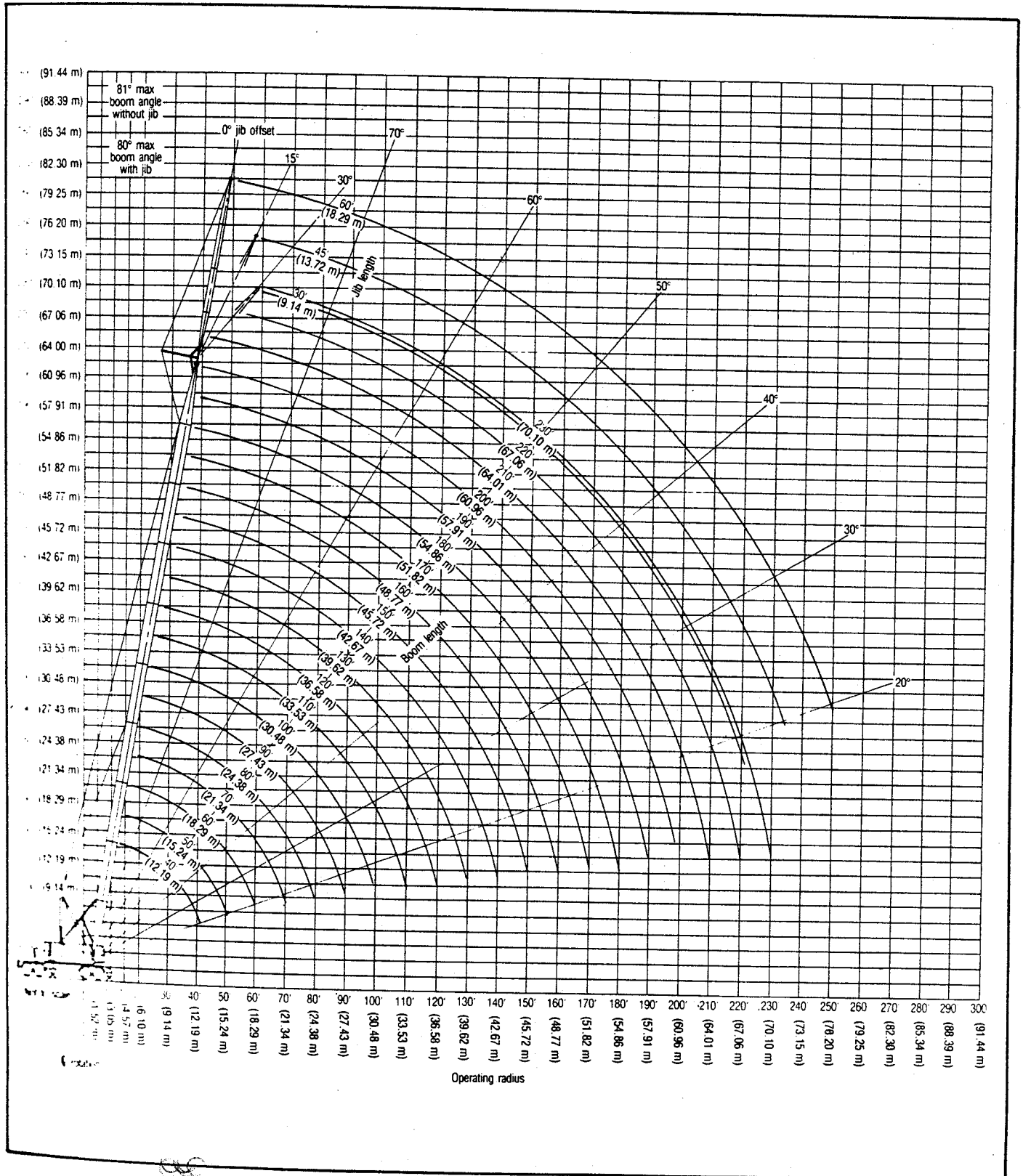
HC-218A boom/jib working ranges — open throat boom

Boom — tubular: 60" (1.52 m) wide, 50" (1.27 m) deep with open throat top section, 1 3/8" (35 mm) boom pendants, boom live mast, and boom midpoint suspension pendants as required.

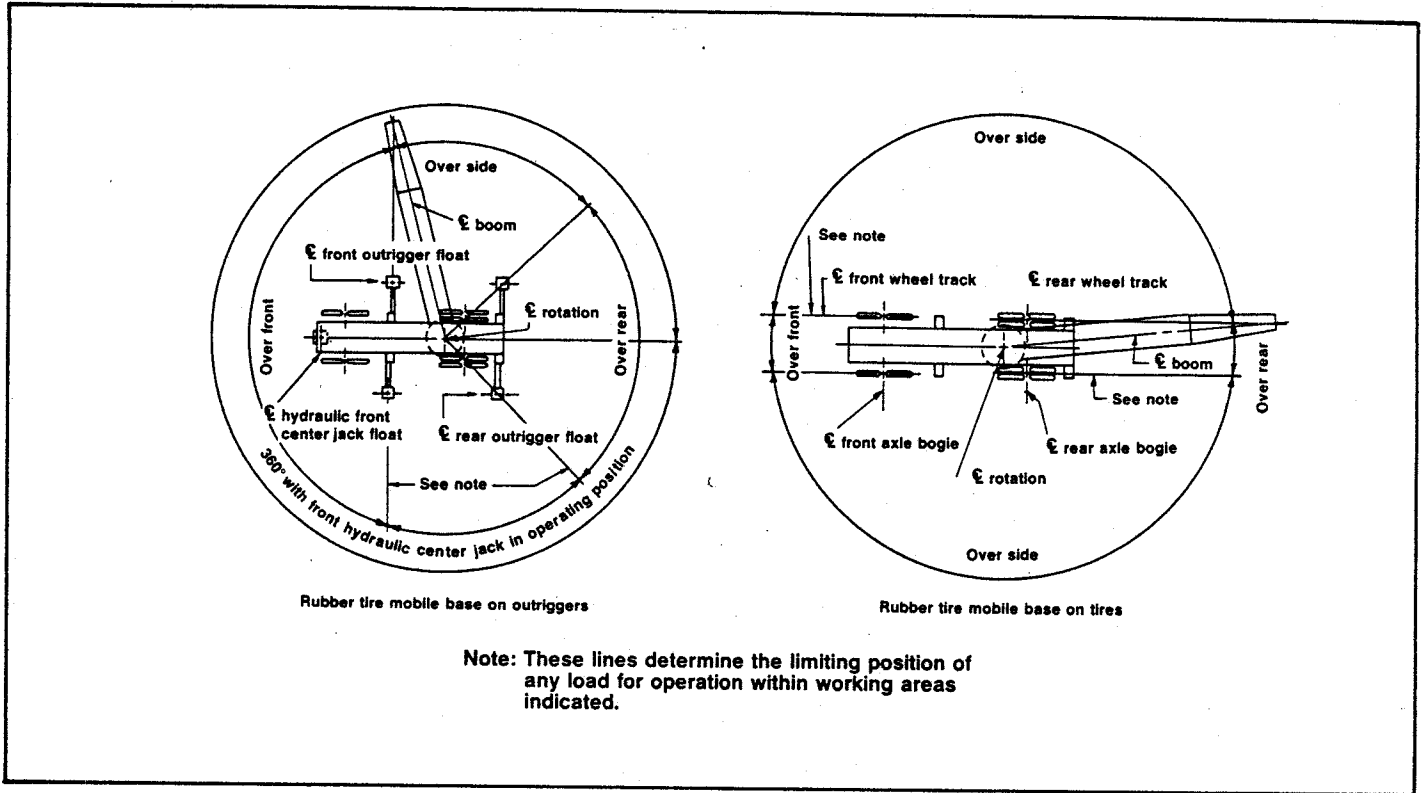
Jib — tubular: 32" (0.81 m) wide, 24" (0.61 m) deep.

Counterweights — Refer to charts page 1.

Mounting — rubber tire mobile base:
FMC, 8 x 4 drive, 260" (6.60 m) wheelbase, 11' 0" (3.35 m) wide.



HC-218A working areas



GENERAL INFORMATION ONLY

We are constantly improving our products and therefore reserve the right to change designs and specifications.

