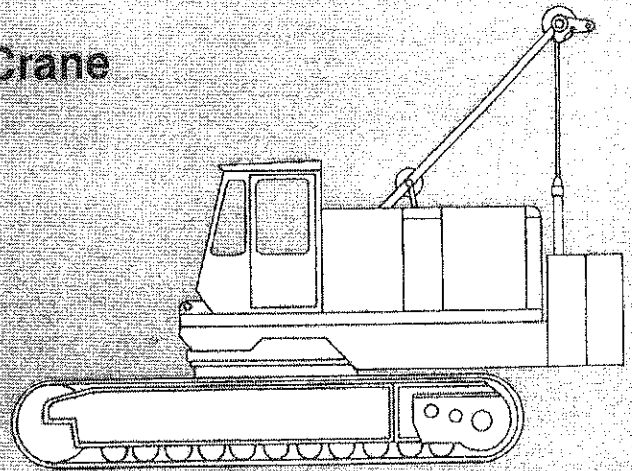


CLARK

700-HC

Specifications

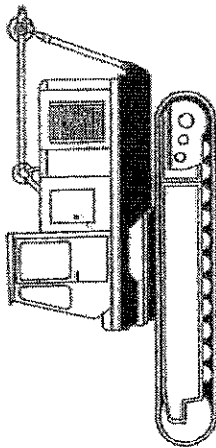
Crawler Crane



LIMA 700-HC

WEIGHTS OF COMPONENT PARTS

BASIC MACHINE:



Equipment includes: fabricated truck and rotating base; environmental cab; stand-ards and crawlers 20'-1" (6.12m) length; 30" (76cm) treads; anti-friction bearing swing circle and integral swing gear; diesel engine; precision boom hoist with power controlled boom lowering; mechanical hoist brakes; air controls; gantry (No lagging or counterweight).

Approx. Shipping Weight 74,330 lbs. (33,716kg.)

TRUCK:



With 30" (76cm) Treads 45,145 lbs. (20,478kg.)
 With 35" (89cm) Treads 47,125 lbs. (21,376kg.)
 With 42" (107cm) Treads 48,895 lbs. (22,179kg.)



SIDE FRAMES:
 w/o Treads Ea. 8,430 lbs. (3,823kg.)

CRANE ATTACHMENT:

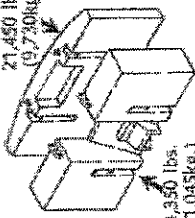
(Incl. Cables) 7,345 lbs. (3,332kg.)
 Add'l Rotating Parts 635 lbs. (288kg.)
 Total Attachment Wt. 7,980 lbs. (3,620kg.)

COUNTERWEIGHTS:

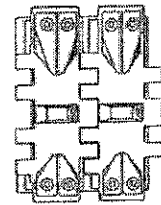
Crane 45,800 lbs. (20,775kg.)

Clamshell 24,350 lbs. (11,045kg.)

21,450 lbs. (9,730kg.)

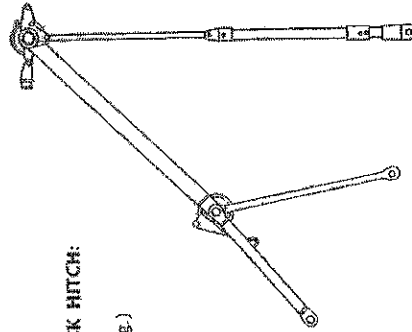


CRAWLER BELTS:



Tread Size	Weight Per Belt
30" (76cm)	5,460 lbs. (2,477kg.)
35" (89cm)	6,450 lbs. (2,926kg.)
42" (107cm)	7,335 lbs. (3,327kg.)

52 TREADS PER BELT



TELESCOPIC BACK HITCH GANTRY:
 2,060 lbs. (934kg.)

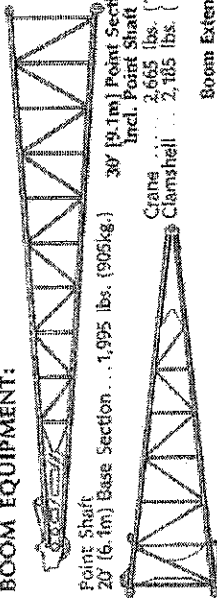
CLAMSHELL ATTACHMENT:

(Incl. Cables) 6,315 lbs. (2,864kg.)
 Add'l Rotating Parts 660 lbs. (299kg.)
 Tagline Winder (Incl. In Rotating Parts) 355 lbs. (162kg.)
 Total Attachment Weight 7,330 lbs. (3,325kg.)

CABLES:

Attachment	Basic Cable Weights	For Each Add'l 10 Feet of Boom	Boom Hoist Cables
Crane (Main Hoist)	620 lbs. (281kg.)	—	10 Part Line... 410 lbs. (186kg.)
Crane (Aux. Hoist)	120 lbs. (54kg.)	20 lbs. (9.1kg.)	12 Part Line... 465 lbs. (220kg.)
Clamshell	190 lbs. (86kg.)	20 lbs. (9.1kg.)	

BOOM EQUIPMENT:



Point Shaft
 20' (6.1m) Base Section... 1,995 lbs. (905kg.)
 30' (9.1m) Point Section Incl. Point Shaft
 Crane 2,665 lbs. (1,209kg.)
 Clamshell 2,185 lbs. (991kg.)

Boom Extensions:
 825 lbs. (374kg.)
 10 Ft. (3.05m) (374kg.)
 1,285 lbs. (583kg.)
 20 Ft. (6.10m) (583kg.)
 1,655 lbs. (751kg.)
 30 Ft. (9.15m) (751kg.)
 2,205 lbs. (1,000kg.)
 40 Ft. (12.19m) (1,000kg.)

Crossover and Basic Slings 10 Part 920 lbs. (417kg.)
 Crossover and Basic Slings 12 Part 950 lbs. (431kg.)
 Mid-Point Suspension
 160' (49m) Thru 180' (55m) 460 lbs. (209kg.)
 190' (58m) & 200' (61m) Boom 525 lbs. (238kg.)

CRANE ATTACHMENT:

Hook Block 1,325 lbs. (601kg.)
 Ball & Hook 615 lbs. (279kg.)
 Boom Stop (Incl. In Attachment Weights) ... 615 lbs. (279kg.)

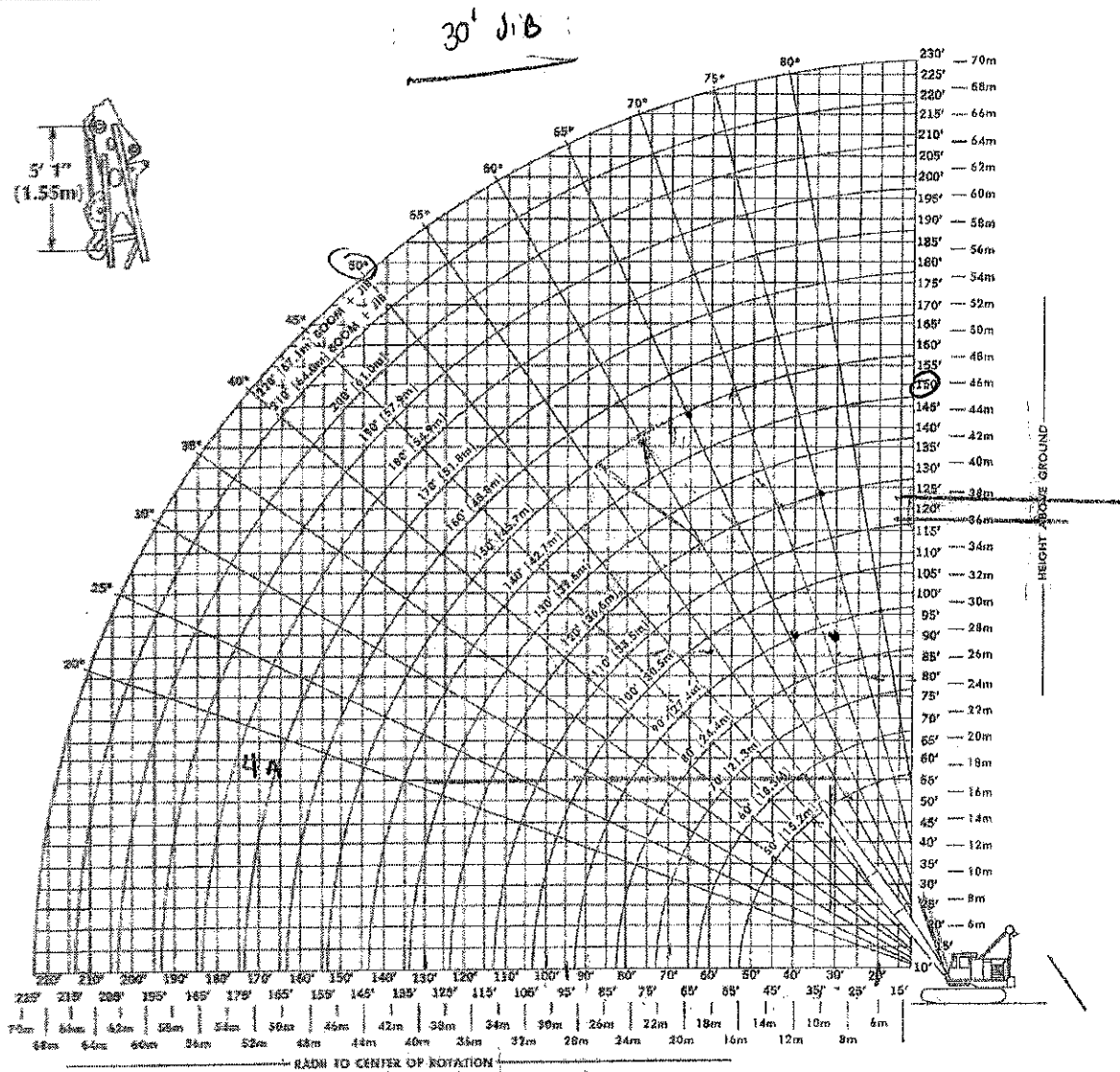
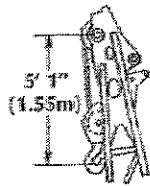
HEAVY DUTY JIB:



20' (6.1m) Basic Jib Assembly Complete 1,820 lbs. (826kg.)
 10' (3.05m) Jib Extension 390 lbs. (177kg.)
 20' (6.1m) Jib Extension 690 lbs. (313kg.)
 Maximum Jib Length 60 ft. (18.3m)

NOTE: For Each Additional 10' (3.05m) of Boom Above the Basic Boom, Add 35 lbs. (15.9kg.) to Jib Assembly.

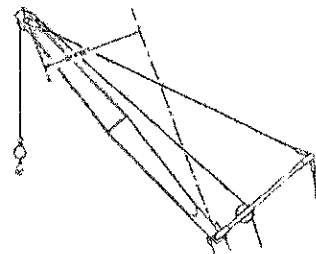
CRANE WORKING RANGES



For Boom or Jib specifications, descriptions, maximum lengths and applications, refer to boom and jib Data Chart.

Recommended Wire Rope Reeving For Hook Blocks	
Load in Pounds	No. Part Line
Over 16,800lbs. (7,620kg)	2
Over 33,600lbs. (15,240kg)	3
Over 50,400lbs. (22,860kg)	4
Over 67,200lbs. (30,480kg)	5
Over 84,000lbs. (38,100kg)	6
Over 100,800lbs. (45,720kg)	7
Over 117,600lbs. (53,340kg)	8
Over 134,400lbs. (60,960kg)	9
Over 151,200lbs. (68,580kg)	10

Requires 5/8" (19.1mm) dia. wire rope having a minimum breaking strength of 58,900 lbs. (26,717kg.).



Heavy Duty Jib 25 1/2" (64.8cm) x 34 1/2" (87.6cm) Sec.			
Jib Length	Rating	Offset	Effective Weight
20' (6.1m)	13 Ton (11.8 Ton)	6'-2" (1.88m)	2,055lbs. (932kg.)
30 (9.1m)	10 Ton (9.1 Ton)	11'-3" (3.43m)	2,650lbs. (1,202kg.)
40' (12.2m)	7 Ton (6.4 Ton)	16'-2" (4.93m)	3,360lbs. (1,524kg.)
50' (15.2m)	5 Ton (4.5 Ton)	21'-1" (6.43m)	4,010lbs. (1,819kg.)
60' (18.3m)	4 Ton (3.6 Ton)	26'-0" (7.93m)	4,865lbs. (2,207kg.)

Jib capacities are approximately the same as Boom capacities at any given radius, but not to exceed the rating listed above. Effective jib weight to be subtracted from Boom capacity chart if load is raised on Boom point when jib is assembled on Boom.

80 Tons
Class 15-364

CRANE LIFTING CAPACITIES

Boom				Crawlers Extended			Crawlers Retracted	Boom				Crawlers Extended	
Lgth.	Rad.	Ht.	Angle	45,000 Lb. Cw't	24,350 Lb. Cw't	24,350 Lb. Cw't	Lgth.	Rad.	Ht.	Angle	45,000 Lb. Cw't	24,350 Lb. Cw't	
50'	15'	54.9'	76.2	*160,000	126,200	---	120'	25'	124.3'	79.5	69,950	50,200	
	20'	53.3'	70.2	100,875	72,975	41,725		30'	123.2'	77.0	53,200	37,950	
	25'	51.1'	64.0	70,625	50,900	30,800		35'	122.0'	74.6	42,650	30,200	
	30'	48.4'	57.4	54,075	38,825	24,225		40'	120.5'	72.1	35,375	24,875	
	35'	44.8'	50.3	43,650	31,200	19,800		45'	118.7'	69.5	30,075	20,975	
	40'	40.0'	42.3	36,450	25,950	16,650		50'	116.7'	67.0	26,025	18,025	
	45'	33.5'	33.0	31,200	22,100	14,275		60'	111.9'	61.7	20,275	13,800	
50'	23.5'	20.1	27,200	19,200	12,400	70'		105.9'	56.1	16,350	10,925		
60'	15'	65.1'	78.5	*150,000	126,175	---		80'	98.4'	50.1	13,525	8,850	
	20'	63.9'	73.6	100,850	72,950	41,625		90'	89.0'	43.6	11,400	7,300	
	25'	62.1'	68.5	70,575	50,850	30,675		100'	79.0'	36.1	9,725	6,075	
	30'	59.9'	63.3	53,975	38,725	24,050		110'	60.7'	27.0	8,375	5,075	
	35'	57.1'	57.8	43,500	31,075	19,625		120'	33.2'	12.9	7,325	4,325	
	40'	53.6'	52.0	36,300	25,800	16,450		130'	30'	133.5'	78.0	53,075	37,825
	45'	49.2'	45.6	31,050	21,950	14,075	35'		132.3'	75.8	42,500	30,075	
50'	43.7'	38.5	27,025	19,000	12,200	40'	130.9'		73.5	35,225	24,725		
60'	25.2'	18.3	21,300	14,825	9,500	45'	129.3'		71.2	29,925	20,825		
70'	16'	75.1'	79.3	*135,000	110,600	57,300	50'		127.5'	68.8	25,875	17,850	
	20'	74.2'	76.0	100,825	72,925	41,475	60'		123.2'	64.0	20,100	13,625	
	25'	72.8'	71.7	70,475	50,750	30,475	70'		117.7'	59.0	16,750	10,750	
	30'	70.9'	67.4	53,850	38,575	23,850	80'	111.1'	53.7	13,350	8,675		
	35'	68.6'	62.8	43,350	30,900	19,400	90'	102.9'	48.0	11,225	7,100		
	40'	65.8'	58.1	36,100	25,600	16,200	100'	92.9'	41.8	9,550	5,875		
	45'	62.3'	53.2	30,825	21,750	13,825	110'	80.2'	34.6	8,200	4,900		
50'	58.2'	47.9	26,800	18,800	11,950	120'	63.1'	25.9	7,100	4,075			
60'	47.0'	35.5	21,075	14,600	9,250	130'	34.3'	12.4	6,175	3,400			
70'	26.7'	17.0	17,200	11,750	7,350	140'	30'	143.7'	78.9	52,875	37,600		
80'	17'	85.1'	80.0	*120,000	98,075		52,275	35'	142.6'	76.8	42,300	29,850	
	20'	84.5'	77.8	100,800	72,900		41,375	40'	141.3'	74.7	35,025	24,525	
	25'	83.2'	74.1	70,425	50,675		30,375	45'	139.9'	72.6	29,725	20,625	
	30'	81.6'	70.3	53,750	38,500		23,725	50'	138.2'	70.4	25,675	17,675	
	35'	79.6'	66.5	43,250	30,800		19,275	60'	134.2'	66.0	19,900	13,425	
	40'	77.3'	62.5	36,025	25,500		16,100	70'	129.3'	61.4	16,000	10,575	
	45'	74.4'	58.4	30,725	21,625	13,700	80'	123.3'	56.7	13,175	8,500		
50'	71.1'	54.1	26,700	18,700	11,825	90'	116.0'	51.6	11,025	6,925			
60'	62.5'	44.6	20,975	14,500	9,125	100'	107.3'	46.2	9,375	5,700			
70'	50.1'	33.2	17,075	11,650	7,225	110'	96.6'	40.2	8,025	4,725			
80'	28.2'	15.9	14,275	9,575	5,850	120'	83.3'	33.3	6,925	3,900			
90'	19'	94.9'	79.8	*110,250	79,825	44,350	130'	65.3'	24.9	6,000	3,225		
	20'	94.7'	79.1	100,775	72,825	41,225	140'	35.3'	12.0	5,200	2,650		
	25'	93.6'	75.9	70,325	50,600	30,200	150'	30'	153.9'	79.7	52,750	37,475	
	30'	92.2'	72.6	53,625	38,350	23,525		35'	152.9'	77.7	42,150	29,700	
	35'	90.4'	69.2	43,100	30,650	19,075		40'	151.7'	75.7	34,850	24,350	
	40'	88.4'	65.8	35,850	25,325	15,875		45'	150.3'	73.8	29,525	20,450	
	45'	85.9'	62.2	30,550	21,450	13,475		50'	148.8'	71.8	25,475	17,475	
50'	83.1'	58.6	26,500	18,500	11,600	60'		145.1'	67.7	19,700	13,225		
60'	76.0'	50.7	20,750	14,275	8,875	70'		140.5'	63.5	15,775	10,350		
70'	66.4'	41.9	16,850	11,425	7,000	80'	135.1'	59.1	12,950	8,275			
80'	53.0'	31.2	14,050	9,350	5,600	90'	128.5'	54.6	10,800	6,700			
90'	29.5'	14.9	11,900	7,800	4,550	100'	120.8'	49.7	9,125	5,475			
100'	20'	104.9'	80.2	100,750	72,850	41,075	110'	111.5'	44.5	7,775	4,475		
	25'	103.9'	77.3	70,200	50,475	30,025	120'	100.2'	38.8	6,675	3,675		
	30'	102.6'	74.4	53,475	38,225	23,350	130'	86.2'	32.2	5,750	2,975		
	35'	101.1'	71.4	42,925	30,500	18,900	140'	67.5'	24.1	4,950	2,400		
	40'	99.2'	68.3	35,675	25,175	15,700	150'	36.4'	11.6	4,275	1,925		
	45'	97.1'	65.2	30,375	21,275	13,300	160'	35'	163.1'	78.5	42,025	29,575	
	50'	94.6'	62.0	26,325	18,325	11,425		40'	162.0'	76.6	34,725	24,225	
60'	88.5'	55.3	20,575	14,100	8,700	45'		160.0'	74.6	29,400	20,300		
70'	80.6'	48.0	16,675	11,250	6,800	50'		159.3'	72.9	25,325	17,300		
80'	70.2'	39.7	13,850	9,175	5,400	60'		155.8'	69.2	19,525	13,050		
90'	55.7'	29.6	11,725	7,600	4,350	70'		151.6'	65.3	15,600	10,175		
100'	30.8'	14.2	10,050	6,375	3,500	80'		146.6'	61.3	12,775	8,100		
110'	25'	114.1'	78.5	69,975	50,250	29,750	90'	140.6'	57.1	10,625	6,525		
	30'	113.0'	75.8	53,225	37,975	23,075	100'	133.6'	52.7	8,950	5,275		
	35'	111.6'	73.1	42,675	30,225	18,600	110'	125.3'	48.1	7,600	4,300		
	40'	109.9'	70.4	35,400	24,900	15,400	120'	115.5'	43.0	6,475	4,375		
	45'	108.0'	67.6	30,100	21,000	13,000	130'	103.7'	37.5	5,550	2,800		
	50'	105.8'	64.7	26,050	18,050	11,125	140'	89.0'	31.1	4,775	2,225		
	60'	100.4'	58.8	20,300	13,825	8,375	150'	69.6'	23.3	4,100	1,725		
70'	93.6'	52.5	16,375	10,950	6,500	160'	37.4'	11.2	3,500	---			
80'	84.9'	45.6	13,550	8,875	5,100								
90'	73.7'	37.8	11,425	7,325	4,025								
100'	58.3'	28.2	9,750	6,100	3,200								
110'	32.0'	13.5	8,400	5,100	2,525								

THIS CHART IS BASED UPON:

1. Loads marked by * are the maximum loads permitted by the structural strength of the parts and are not based upon the stability of the machine.
2. All other loads are based upon the stability of the machine, and do not exceed 75% of the tipping loads in the least stable direction.
3. Machine to be level on firm solid support; shock and side loads are to be prevented.
4. All hook blocks, lifting tackle, and jib attachments are considered a part of the load to be lifted.
5. Exceeding the capacities shown on this chart or altering the counterweight nullifies all

Maximum Counterweight: Crawlers Extended 45,800 Lbs.
 Crawlers Retracted 24,350 Lbs.

Crawlers Retracted	Room				Crawlers Extended		Crawlers Retracted	Capacities Below Include Jib — See Jib Data		
	Lgth.	Rad.	Ht.	Angle	45,800 Lb. C'wt	24,350 Lb. C'wt		Boom Plus Jib		Crawlers Extended 45,800 lb. C'wt
24,350 Lb. C'wt										
29,700	170'	35'	173.3'	79.2	41,825	29,375		Lgth. Load Rad.		
23,050		40'	172.2'	77.4	34,500	24,000				
18,575		45'	171.0'	75.7	29,150	20,075				
15,375		50'	169.7'	74.0	25,075	17,075				
12,975		60'	166.5'	70.4	19,275	12,800				
11,300		70'	162.6'	66.8	15,350	9,900				
8,350		80'	157.9'	63.1	12,500	7,825				
6,475		90'	152.4'	59.2	10,350	6,250				
5,075		100'	145.9'	55.2	8,675	5,000				
4,000		110'	138.4'	51.0	7,300	4,000				
3,175		120'	129.7'	46.5	6,200	3,200				
2,500		130'	119.4'	41.7	5,275	2,500				
1,975		140'	107.0'	36.3	4,475	1,925				
22,850		150'	91.8'	30.2	3,800					
18,375		160'	71.6'	22.6	3,200					
15,175		170'	38.3'	10.9	* 2,575					
12,775		180'	35'	183.4'	79.8	41,700				
10,900	40'		182.5'	78.2	34,375	23,875				
8,175	45'		181.3'	76.5	29,025	19,925				
6,275	50'		180.1'	74.9	24,950	16,925				
4,875	60'		177.1'	71.6	19,150	12,675				
3,825	70'		173.4'	68.2	15,200	9,775				
2,975	80'		169.0'	64.7	12,350	7,675				
2,300	90'		163.9'	61.1	10,250	6,100				
1,725	100'		158.0'	57.4	8,525	4,850				
22,625	110'		151.1'	53.5	7,175	3,850				
18,150	120'		143.1'	49.5	6,050	3,050				
14,975	130'	133.9'	45.1	5,125	2,350					
12,550	140'	123.1'	40.5	4,325	1,775					
10,700	150'	110.2'	35.3	3,650						
7,975	160'	94.4'	29.3	3,050						
6,075	170'	73.6'	21.9	2,550						
4,700	180'	39.3'	10.6	* 2,000						
3,625	190'	40'	192.7'	78.8	34,250	23,750		Lgth. Load Rad.		
2,775		45'	191.6'	77.2	28,500	19,800				
2,100		50'	190.4'	75.7	24,800	16,775				
1,550		60'	187.6'	72.6	18,950	12,475				
22,425		70'	184.1'	69.4	15,000	9,575				
17,950		80'	180.0'	66.1	12,150	7,475				
14,750		90'	175.2'	62.8	9,975	5,875				
12,350		100'	169.7'	59.3	8,300	4,625				
10,475		110'	163.3'	55.7	6,925	3,625				
7,725		120'	156.0'	52.0	5,825	2,800				
5,825		130'	147.7'	48.1	4,875	2,125				
4,450	140'	138.0'	43.1	4,100	1,525					
3,375	150'	126.7'	39.3	3,400						
2,550	160'	113.4'	34.3	2,825						
1,850	170'	92.0'	28.5	2,300						
	180'	75.5'	21.4	1,825						
	200'	40'	202.9'	79.4	34,000	23,475		Lgth. Load Rad.		
		45'	201.9'	77.9	28,625	19,550				
		50'	200.7'	76.4	24,550	16,525				
		60'	198.0'	73.5	18,725	12,250				
		70'	194.8'	70.4	14,775	9,350				
		80'	190.9'	67.4	11,925	7,250				
		90'	186.4'	64.2	9,775	5,675				
		100'	181.2'	61.0	8,075	4,425				
		110'	175.3'	57.7	6,725	3,425				
		120'	168.5'	54.2	5,625	2,600				
		130'	160.8'	50.6	4,675	1,925				
	140'	152.1'	46.8	3,900						
	150'	142.0'	42.7	3,200						
	160'	130.3'	38.3	2,625						
	170'	116.4'	33.4	2,100						
	180'	99.5'	27.8	1,650						

- warranties.
- Over the side is the least stable direction.
- Capacities above the dotted lines require a wire rope length greater than furnished as standard with the machine.
- WHEN THE MACHINE IS EQUIPPED WITH 45,800 LBS. OF COUNTERWEIGHT, AND THE CRAWLERS RETRACTED, THE COUNTERWEIGHT MUST NOT BE SWUNG OVER THE SIDE OF THE MACHINE.