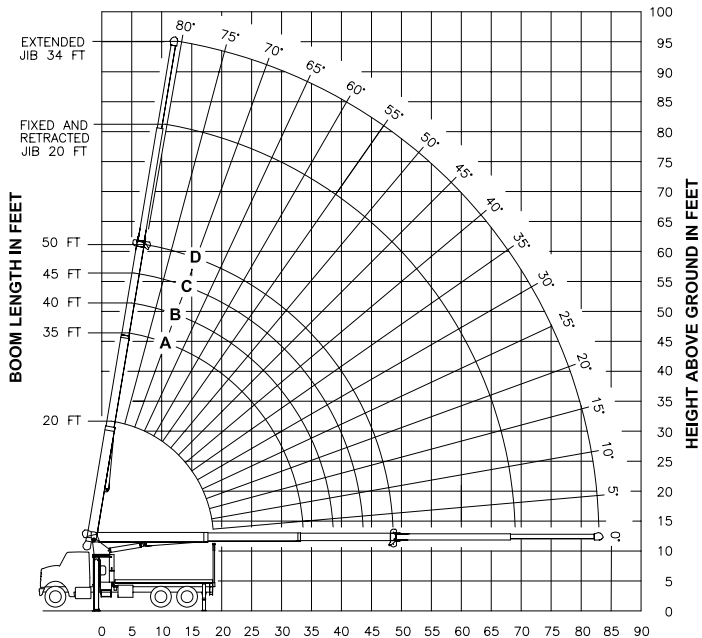


**RANGE DIAGRAM**



**OPERATING RADIUS FROM CENTERLINE OF ROTATION IN FEET**

**LOAD RATINGS IN LBS WITH OUTRIGGERS AND STABILIZERS EXTENDED**

BOOM LENGTH IN FEET	LOADED BOOM ANGLE BOOM LENGTH AND MARKER				1ST		2ND	
	A		B		C		D	
	20 FT	35 FT	40 FT	45 FT	45 FT	50 FT		
5	74	44000						
8	65	32430						
10	58	27520	73	24000	76	20770	78	20380
12	51	23900	70	21430	73	17930	75	17530
14	43	20960	66	18960	70	15820	72	15440
17	26	16790	61	16210	65	13470	68	13130
20			55	14160	60	11740	64	11430
25			44	11570	51	9630	57	9400
30			29	9300	41	8030	48	7930
35					27	6500	39	6710
40							26	5480
45								25
50								45
55								50
60								55
65								60
70								65
75								70
80								75
								80

**JIB LOAD RATINGS WITH  
OUTRIGGERS AND STABILIZERS EXTENDED**

BOOM LENGTH IN FEET	LOADING LOADING LOADING	20 FT JIB FOR ALL BOOM LENGTHS SEE WARNING NOTE 4	LOADING LOADING LOADING	34 FT JIB FOR ALL BOOM LENGTHS SEE WARNING NOTE 4
5				
8				
10	79	8500		
12	76	8380	79	5780
14	74	7480	77	5290
17	70	6320	74	4620
20	65	5420	70	4100
25	61	4720	67	3680
30	56	4170	63	3330
35	51	3710	59	3050
40	45	3330	55	2800
45	39	2980	50	2560
50	31	2660	46	2330
55	22	2330	41	2130
60			35	1960
65			28	1810
70			18	1680

510 LBS. 290 LBS. 260 LBS. 230 LBS. 210 LBS. DEDUCTIONS FOR STOWED JIB

**WARNING**

1. THE OPERATOR MUST READ AND UNDERSTAND THE OWNER'S MANUAL BEFORE OPERATING THIS CRANE.
2. POSITIONING OR OPERATION OF CRANE BEYOND AREAS SHOWN ON THIS CHART IS NOT INTENDED OR APPROVED EXCEPT WHERE SPECIFIED IN OWNER'S MANUAL.
3. LOADED BOOM ANGLES AT SPECIFIED BOOM LENGTHS GIVE ONLY AN APPROXIMATION OF THE OPERATING RADIUS. THE BOOM ANGLE BEFORE LOADING SHOULD BE GREATER TO ACCOUNT FOR DEFLECTIONS. DO NOT EXCEED THE OPERATING RADIUS FOR RATED LOADS.
4. THE OPERATING RADIUS SHOWN IN THE JIB RATING CHART IS FOR FULLY EXTENDED BOOM ONLY. WHEN BOOM IS NOT FULLY EXTENDED, USE ONLY LOADED BOOM ANGLE TO DETERMINE LOAD RATING OF JIB. DO NOT RELY ON CAPACITY ALERT SYSTEM WHEN LIFTING FROM JIB.
5. FOR BOOM ANGLES NOT SHOWN ON JIB LOAD RATING CHART, USE RATING OF NEXT LOWER BOOM ANGLE.
6. FOR BOOM LENGTHS NOT SHOWN, USE RATING OF NEXT LONGER BOOM LENGTH. FOR RADII NOT SHOWN, USE RATING OF NEXT LONGER RADIUS.
7. CRANE LOAD RATINGS ON OUTRIGGERS ARE BASED ON FREELY SUSPENDED LOADS WITH THE MACHINE LEVELED AND STANDING ON A FIRM UNIFORM SUPPORTING SURFACE. NO ATTEMPT SHALL BE MADE TO MOVE A LOAD HORIZONTALLY ON THE GROUND IN ANY DIRECTION.
8. PRACTICAL WORKING LOADS DEPEND ON SUPPORTING SURFACE, WIND, AND OTHER FACTORS AFFECTING STABILITY, SUCH AS HAZARDOUS SURROUNDINGS, EXPERIENCE OF PERSONNEL, AND PROPER HANDLING, ALL OF WHICH MUST BE TAKEN INTO ACCOUNT BY THE OPERATOR.
9. THE MAXIMUM LOAD WHICH MAY BE TELESCOPED IS LIMITED BY HYDRAULIC PRESSURE, BOOM ANGLE, AND BOOM LUBRICATION. IT IS SAFE TO ATTEMPT TO TELESCOPE ANY LOAD WITHIN THE LIMITS OF THE LOAD RATING CHART.

**INFORMATION**

1. DEDUCTIONS MUST BE MADE FROM RATED LOADS FOR STOWED JIB, OPTIONAL ATTACHMENTS, HOOKS, AND LOAD-BLOCKS (SEE DEDUCTION CHART). WEIGHTS OF SLINGS AND ALL OTHER LOAD HANDLING DEVICES SHALL BE CONSIDERED A PART OF THE LOAD.
2. CRANE LOAD RATINGS WITH OUTRIGGERS ARE BASED ON OUTRIGGERS AND STABILIZERS EXTENDED AND SET WITH MACHINE LEVELED.
3. LOAD RATINGS ABOVE THE HEAVY LINE ARE STRUCTURALLY LIMITED CAPACITIES. LOAD RATINGS BELOW THE HEAVY LINE ARE STABILITY LIMITED CAPACITIES AND DO NOT EXCEED 85% OF TIPPING.

**DEFINITIONS**

1. OPERATING RADIUS IS THE HORIZONTAL DISTANCE FROM THE AXIS OF ROTATION TO THE CENTER OF THE VERTICAL HOIST LINE OR TACKLE WITH LOAD APPLIED.
2. LOADED BOOM ANGLE AS SHOWN IN THE COLUMN HEADED BY  $\angle$ , IS THE INCLUDED ANGLE BETWEEN THE HORIZONTAL AND LONGITUDINAL AXES OF THE BOOM BASE AFTER LIFTING RATED LOAD AT RATED RADIUS.

**ALLOWABLE LINE PULL**

1 PART LINE	2 PART LINE	3 PART LINE	4 PART LINE	5 PART LINE	6 PART LINE
8500 LBS	17000 LBS	25500 LBS	34000 LBS	42500 LBS	44000 LBS
7400 LBS	14800 LBS	22200 LBS	29600 LBS	37000 LBS	44000 LBS

**WARNING**

ANTI-TWO-BLOCK SYSTEM MUST BE IN GOOD OPERATING CONDITION BEFORE OPERATING CRANE. REFER TO OWNER'S MANUAL.

KEEP AT LEAST 3 WRAPS OF LOAD LINE ON DRUM AT ALL TIMES.

**DEDUCTIONS FROM RATED LOADS FOR LOAD HANDLING DEVICES SUPPLIED BY MANITEX**

AUXILIARY BLOCK	-----	50 LBS
HOSE REEL	-----	160 LBS
OVERHAUL BALL	-----	SEE OVERHAUL BALL MANUFACTURER'S NAMEPLATE
LOAD BLOCKS	-----	SEE LOAD BLOCK MANUFACTURER'S NAMEPLATE
SWING AROUND JIB	-----	SEE LOAD CHART

**WARNING**

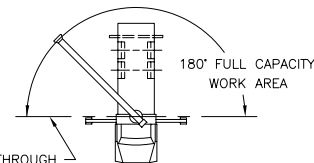
LIFTING OFF THE MAIN BOOM POINT WHILE THE SWING AROUND JIB IS ERRECTED IS NOT INTENDED OR APPROVED.



**MODELS  
2250C & 2250T**

CRANE MEETS ANSI B30.5 REQUIREMENTS

7300087-005 NR



LINE THROUGH CENTERLINE OF ROTATION

**AREA OF OPERATION**