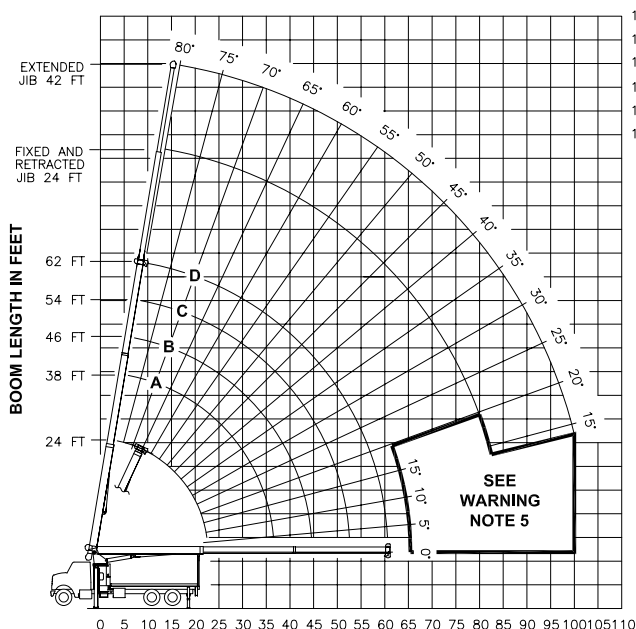


### RANGE DIAGRAM



OPERATING RADIUS FROM CENTERLINE OF ROTATION IN FEET

HEIGHT ABOVE GROUND IN FEET

LOAD RATINGS IN LBS WITH OUTRIGGERS AND STABILIZERS EXTENDED

OPERATING HEIGHT FEET	LOADED BOOM ANGLE BOOM LENGTH AND MARKER	BOOM ANGLE														
		A	B	C	D											
		24 FT	38 FT	46 FT	54 FT	62 FT										
5	77	44000														
8	70	31020														
10	64	26230	75	22930	78	20050										
12	59	22780	72	20820	75	17220	78	16760								
14	53	20120	68	18370	73	15120	76	14670	78	14290						
17	43	16950	63	15640	69	12800	73	12370	75	12020						
20	30	14090	58	13630	65	11100	69	10710	73	10370						
25			48	11140	57	9070	63	8730	68	8450						
30			37	9180	49	7610	57	7350	62	7100						
35			19	7000	40	6410	50	6290	57	6090						
40					28	5260	43	5410	51	5290						
45							33	4600	44	4610						
50							20	3640	37	4000						
55									27	3360						
60								14	2500							
65										65	43	2060	54	1920		
70										70	37	1840	50	1760		
75										75	31	1590	46	1610		
80										80	22	1230	42	1480		
85														85	37	1340
90														90	32	1210
95														95	26	1070
100														100	17	740

JIB LOAD RATINGS WITH OUTRIGGERS AND STABILIZERS EXTENDED

OPERATING HEIGHT FEET	BOOM ANGLE	24 FT JIB FOR ALL BOOM LENGTHS SEE WARNING NOTE 4		42 FT JIB FOR ALL BOOM LENGTHS SEE WARNING NOTE 4	
		RATED LOAD IN POUNDS	RATED LOAD IN POUNDS	RATED LOAD IN POUNDS	RATED LOAD IN POUNDS
10					
12					
14					
17	80	7240			
20	78	6600			
25	75	5670	78	4080	
30	71	4920	75	3660	
35	68	4320	72	3310	
40	64	3820	69	3000	
45	60	3380	66	2720	
50	56	2970	63	2470	
55	52	2620	60	2260	
60	47	2320	57	2080	
65	43	2060	54	1920	
70	37	1840	50	1760	
75	31	1590	46	1610	
80	22	1230	42	1480	
85					
90					
95					
100					

580 LBS. 370 LBS. 310 LBS. 260 LBS. 230 LBS. DEDUCTIONS FOR STOWED JIB

#### WARNING

1. THE OPERATOR MUST READ AND UNDERSTAND THE OWNER'S MANUAL BEFORE OPERATING THIS CRANE.
2. POSITIONING OR OPERATION OF CRANE BEYOND AREAS SHOWN ON THIS CHART IS NOT INTENDED OR APPROVED EXCEPT WHERE SPECIFIED IN OWNER'S MANUAL.
3. LOADED BOOM ANGLES AT SPECIFIED BOOM LENGTHS GIVE ONLY AN APPROXIMATION OF THE OPERATING RADIUS. THE BOOM ANGLE BEFORE LOADING SHOULD BE GREATER TO ACCOUNT FOR DEFLECTIONS. DO NOT EXCEED THE OPERATING RADIUS FOR RATED LOADS.
4. THE OPERATING RADIUS SHOWN IN THE JIB RATING CHART IS FOR FULLY EXTENDED BOOM ONLY. WHEN BOOM IS NOT FULLY EXTENDED, USE ONLY LOADED BOOM ANGLE TO DETERMINE LOAD RATING OF JIB. DO NOT RELY ON CAPACITY ALERT SYSTEM WHEN LIFTING FROM JIB.
5. BOOM MUST BE FULLY RETRACTED WHEN JIB IS ERECTED, BEFORE LOWERING BOOM THRU THIS AREA.
6. FOR BOOM ANGLES NOT SHOWN ON JIB LOAD RATING CHART, USE RATING OF NEXT LOWER BOOM ANGLE.
7. FOR BOOM LENGTHS NOT SHOWN, USE RATING OF NEXT LONGER BOOM LENGTH. FOR RADI NOT SHOWN, USE RATING OF NEXT LONGER RADIUS.
8. CRANE LOAD RATINGS ON OUTRIGGERS ARE BASED ON FREELY SUSPENDED LOADS WITH THE MACHINE LEVELED AND STANDING ON A FIRM UNIFORM SUPPORTING SURFACE. NO ATTEMPT SHALL BE MADE TO MOVE A LOAD HORIZONTALLY ON THE GROUND IN ANY DIRECTION.
9. PRACTICAL WORKING LOADS DEPEND ON SUPPORTING SURFACE, WIND, AND OTHER FACTORS AFFECTING STABILITY SUCH AS HAZARDOUS SURROUNDINGS, EXPERIENCE OF PERSONNEL, AND PROPER HANDLING, ALL OF WHICH MUST BE TAKEN INTO ACCOUNT BY THE OPERATOR.
10. THE MAXIMUM LOAD WHICH MAY BE TELESCOPED IS LIMITED BY HYDRAULIC PRESSURE, BOOM ANGLE, AND BOOM LUBRICATION. IT IS SAFE TO ATTEMPT TO TELESCOPE ANY LOAD WITHIN THE LIMITS OF THE LOAD RATING CHART.

#### INFORMATION

1. DEDUCTIONS MUST BE MADE FROM RATED LOADS FOR STOWED JIB, OPTIONAL ATTACHMENTS, HOOKS, AND LOAD-BLOCKS (SEE DEDUCTION CHART). WEIGHTS OF SLINGS AND ALL OTHER LOAD HANDLING DEVICES SHALL BE CONSIDERED A PART OF THE LOAD.
2. CRANE LOAD RATINGS WITH OUTRIGGERS ARE BASED ON OUTRIGGERS AND STABILIZERS EXTENDED AND SET WITH MACHINE LEVELED.
3. LOAD RATINGS ABOVE THE HEAVY LINE ARE STRUCTURALLY LIMITED CAPACITIES. LOAD RATINGS BELOW THE HEAVY LINE ARE STABILITY LIMITED CAPACITIES AND DO NOT EXCEED 85% OF TIPPING.

#### DEFINITIONS

1. OPERATING RADIUS IS THE HORIZONTAL DISTANCE FROM THE AXIS OF ROTATION TO THE CENTER OF THE VERTICAL HOIST LINE OR TACKLE WITH LOAD APPLIED.
2. LOADED BOOM ANGLE AS SHOWN IN THE COLUMN HEADED BY  $\angle$  IS THE INCLUDED ANGLE BETWEEN THE HORIZONTAL AND LONGITUDINAL AXES OF THE BOOM BASE AFTER LIFTING RATED LOAD AT RATED RADIUS.

#### ALLOWABLE LINE PULL

1 PART LINE	2 PART LINE	3 PART LINE	4 PART LINE	5 PART LINE	6 PART LINE
8500 LBS	17000 LBS	25500 LBS	34000 LBS	42500 LBS	44000 LBS
7400 LBS	14800 LBS	22200 LBS	29600 LBS	37000 LBS	44000 LBS

## WARNING

ANTI-TWO-BLOCK SYSTEM MUST BE IN GOOD OPERATING CONDITION BEFORE OPERATING CRANE. REFER TO OWNER'S MANUAL.

KEEP AT LEAST 3 WRAPS OF LOAD LINE ON DRUM AT ALL TIMES.

9/16" - 6X25 IWRC (3.5:1 S.F.)  
29750 LBS. BREAKING STRENGTH  
9/16" ROT RESISTANT (5.0:1 S.F.)  
37000 LBS. BREAKING STRENGTH

#### DEDUCTIONS FROM RATED LOADS FOR LOAD HANDLING DEVICES SUPPLIED BY MANITEX

AUXILIARY BLOCK ----- 50 LBS  
OVERHAUL BALL ----- SEE OVERHAUL BALL MFRG NAMEPLATE  
LOAD BLOCK ----- SEE BLOCK MFRG NAMEPLATE  
HOSE REEL ----- 160 LBS  
SWING AROUND JIB ----- SEE LOAD CHART

#### WARNING

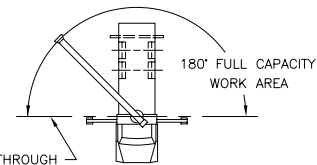
LIFTING OFF THE MAIN BOOM POINT WHILE THE SWING AROUND JIB IS ERECTED IS NOT INTENDED OR APPROVED.

**Manitex**

MODELS  
2262C & 2262T

CRANE MEETS ANSI B30.5 REQUIREMENTS

7300087-002 NR



LINE THROUGH CENTERLINE OF ROTATION

AREA OF OPERATION