



MERLO

P 28.8 TOP

- **MAXIMUM LOAD CAPACITY: 6,170 LBS**
- **MAXIMUM LIFT HEIGHT: 26' 9"**
- **MAXIMUM REACH: 17' 3"**
- **LIFT CAPACITY AT MAXIMUM LIFT HEIGHT: 2,600 LBS**
- **LIFT CAPACITY AT MAXIMUM FORWARD REACH: 1,300 LBS**

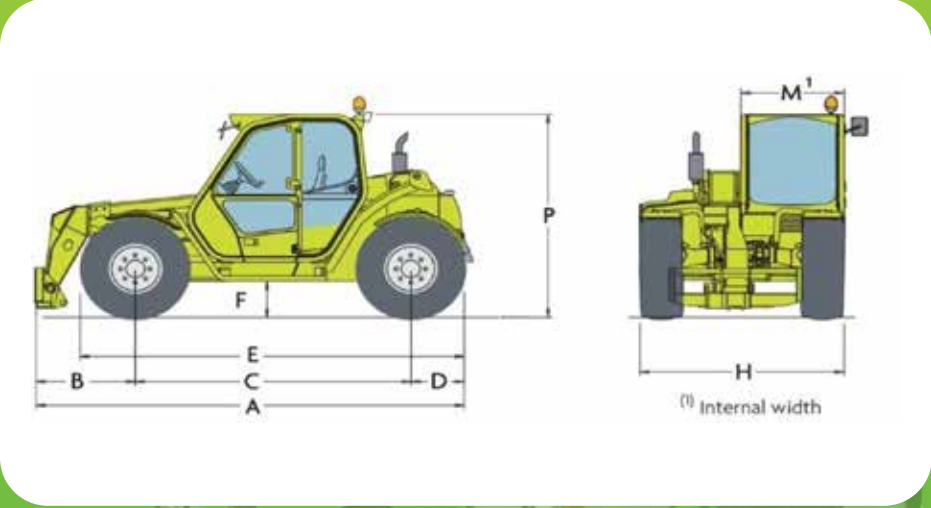
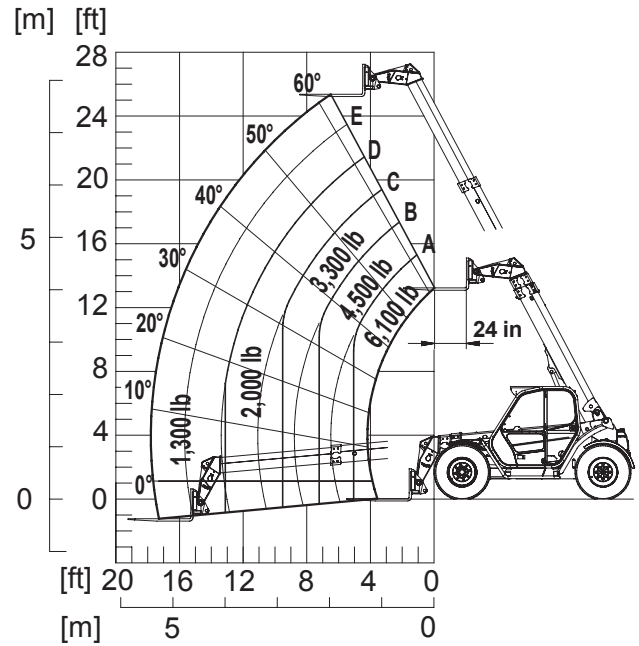


SPECIFICATIONS: P 28.8 TOP



- Power / 4 Cylinder Turbo Diesel Kubota/101HP
- Transmission 2 Speed / Hydrostatic
- Maximum Speed 25 MPH
- Total Unladen Mass (with forks) 14,100 LBS
- Hydraulic System-Gear Pump (PSI-gal / min) ... 3,050-28.5
- Fuel Capacity 26.4 Gallons
- Hydraulic Oil Capacity 22.4 Gallons
- Tires 405/70-20
- Turning Radius 12'-1"
- 4 Wheel Drive / 3 Steering Modes Standard
- Disc Service Brakes on all 4 Wheels Standard
- Disc Parking Brake with Automatic Locking Standard
- Low Cab Height

P 28.8 WITH FORKS



Dimensions (FT)					
A	13'-9"	D	1'-7"	H	6'-5"
B	3'-2"	E	12'-4"	M	3'-2"
C	8'-9"	F	1'-2"	P	7'-0"

DEALER INFORMATION: