



MERLO

P 32.6 TOP

- **MAXIMUM LOAD CAPACITY: 7,050 LBS**
- **MAXIMUM LIFT HEIGHT: 20' 9"**
- **MAXIMUM REACH: 11' 2"**
- **LIFT CAPACITY AT MAXIMUM LIFT HEIGHT: 5,700 LBS**
- **LIFT CAPACITY AT MAXIMUM FORWARD REACH: 2,750 LBS**

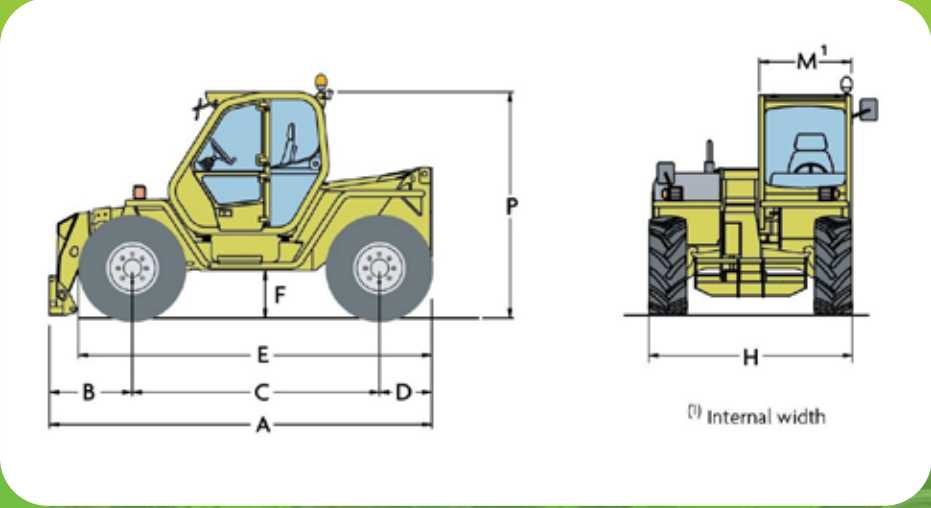
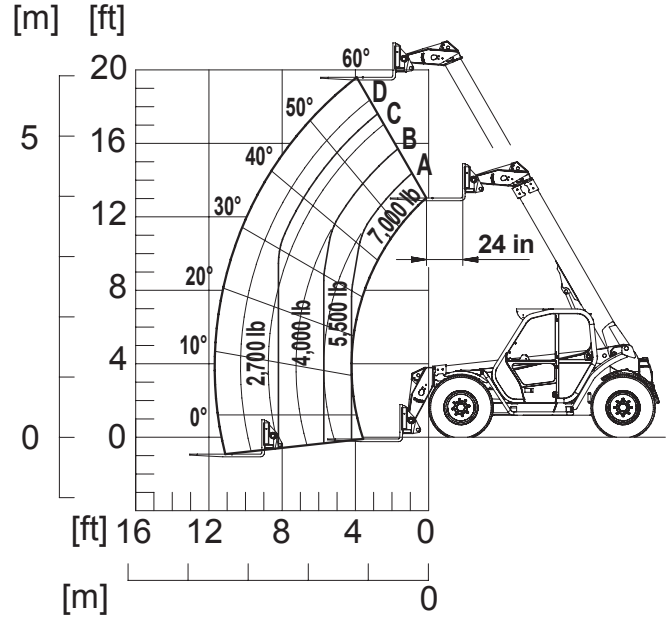


SPECIFICATIONS: P 32.6 TOP



- Power / 4 Cylinder Turbo DieselKubota / 101HP
- Transmission 2 Speed / Hydrostatic
- Maximum Speed 25 MPH
- Total Unladen Mass (with forks)13,100 LBS
- Hydraulic System-Gear Pump (PSI-gal / min) ... 3,050-28.5
- Fuel Capacity 26.4 Gallons
- Hydraulic Oil Capacity 22.4 Gallons
- Tires 405/70-20
- Turning Radius 12' -1"
- 4 Wheel Drive / 3 Steering ModesStandard
- Disc Service Brakes on all 4 WheelsStandard
- Disc Parking Brake with Automatic Locking Standard
- Low Cab Height

P 32.6 WITH FORKS



Dimensions (FT)					
A	13' -8"	D	1' -7"	H	6' -5"
B	3' -1"	E	12' -4"	M	3' -2" ⁽¹⁾
C	8' -9"	F	1' -2"	P	7' -0"

⁽¹⁾ Internal useful width

DEALER INFORMATION: