



# MERLO

## P 40.17 EE STABILIZERS

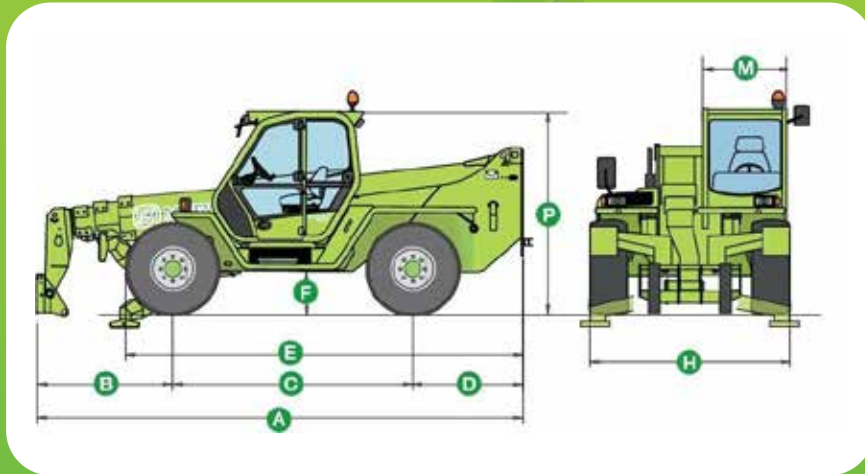
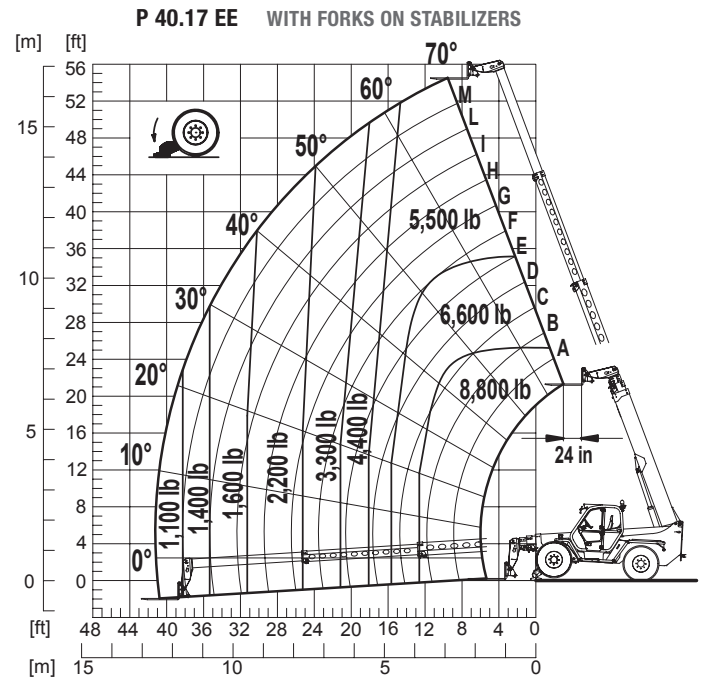
- **MAXIMUM LOAD CAPACITY: 8,800 LBS**
- **MAXIMUM LIFT HEIGHT: 55'**
- **MAXIMUM REACH: 41'**
- **LIFT CAPACITY AT MAXIMUM LIFT HEIGHT: 5,500 LBS**
- **LIFT CAPACITY AT MAXIMUM FORWARD REACH: 1,100 LBS**



# SPECIFICATIONS: P 40.17 EE STABILIZERS



Power / 4 Cylinder Turbo Diesel .....	Perkins/101 HP
Transmission .....	2 Speed / Hydrostatic
Maximum Speed .....	21 MPH
Total Unladen Mass (with forks) .....	22,800 LBS
Boom Sideshift (Inches) .....	Standard / 17
Frame Leveling .....	Standard / ±10%
Load Sensing Hydraulic Pump (PSI-gal/min) .....	3,045-28.5
Fuel Capacity .....	40 Gallons
Hydraulic Oil Capacity .....	37 Gallons
Tires .....	405/70-24
Turning Radius .....	13'-3"
4 Wheel Drive / 3 Steering Modes .....	Standard
Hydraulic System .....	Load-sensing
Control and Command Center .....	Electronic MERlin
Independent Front Stabilizers .....	Standard



Dimensions (FT)					
A	19'-0"	D	4'-3"	H	7'-9"
B	5'-0"	E	15'-8"	M	3'-3"
C	9'-4"	F	1'-6"	P	8'-3"

**DEALER INFORMATION:**