



LOAD RATINGS IN LBS. WITH OUTRIGGERS EXTENDED											AREA OF OPERATION			
OPERATING RADIUS	27 FT		34 FT		43 FT		52 FT		61 FT		70 FT			
	LOADED BOOM ANGLE	BOOM LENGTH	LOADED BOOM ANGLE	BOOM LENGTH	LOADED BOOM ANGLE	BOOM LENGTH	LOADED BOOM ANGLE	BOOM LENGTH	LOADED BOOM ANGLE	BOOM LENGTH	LOADED BOOM ANGLE	BOOM LENGTH		
5	77	36000*											DEDUCTIONS FROM RATED LOADS FOR HANDLING DEVICES OVERHAUL BALL: 125 LBS. 1 SHEAVE LOAD BLOCK 200 LBS. 2 SHEAVE LOAD BLOCK 230 LBS. AUX. SHEAVE 50 LBS.	
10	66	21100*	71	17100*	75	16000*	78	15700*						
15	54	15100*	62	14000*	68	12100*	72	11100*	75	10800*	77	9600*		
20	39	11100*	51	10100*	61	9100*	66	8600*	71	8200*	73	7300*		
25	17	7900*	40	7700*	53	7100*	61	6900*	66	6600*	69	5900*		
30			23	6500*	44	6100*	54	5600*	60	5300*	64	4900*		
35					33	4800	47	4700	54	4600*	60	4150*		
40					16	3500	38	4100	48	3900	55	3550		
45							27	3250	41	3200	49	3050		
50							9	2950	33	2800	44	2650		
55									23	2500	37	2350		
60											29	1900		
65											19	1700		
	0	7000	0	5000	0	3000	0	2400	0	2000	0	1400		BOOM RETRACT LOAD
		450		360		260		230		200		175		STOWED JIB DEDUCTION

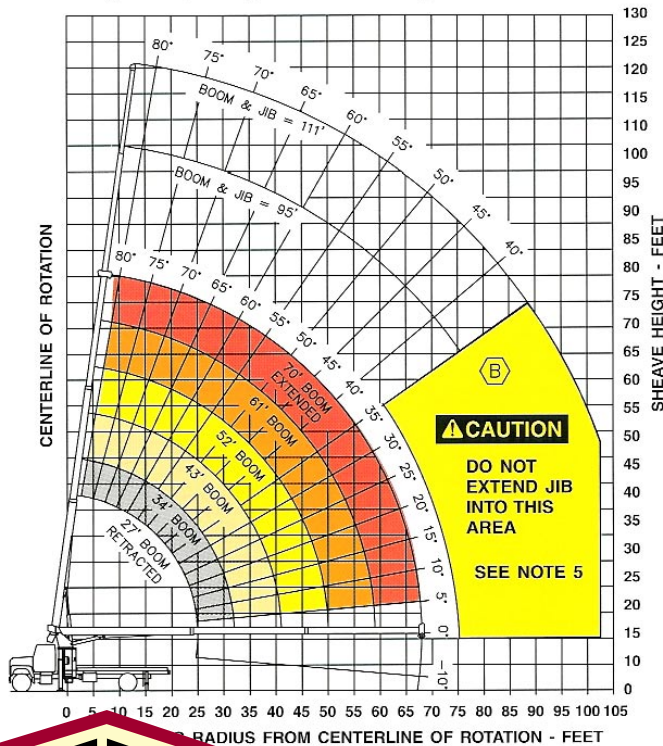
NOTE: STRUCTURAL STRENGTH RATINGS ON CHART ARE INDICATED WITH AN ASTERISKS (*)

JIB CAPACITIES FOR ALL BOOM LENGTHS

VERIFY OPERATIONAL MODE SETTING ON LMI DISPLAY BEFORE LIFTING WITH JIB!

LOADED BOOM ANGLE	35°	40°	45°	50°	55°	60°	65°	70°	75°	80°
RETRACTED 24 FT. JIB	700	825	1000	1150	1340	1600	1900	2300	3100	4160
EXTENDED 40 FT. JIB	520	580	650	730	810	930	1080	1400	1810	2260

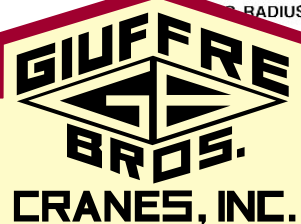
Range Diagram (27' - 70' boom)



GIUFFRÉ BROS.
CRANES, INC.
 TEREX BT-3670

IMPORTANT!

NEVER OPERATE ANY EQUIPMENT NEAR LIVE POWER LINES OR ELECTRICAL CONDUCTORS. SEE OPERATORS MANUAL FOR IMPORTANT SAFETY INFORMATION. NEVER USE ANY EQUIPMENT FOR ANYTHING OTHER THAN WHAT IT WAS INTENDED. ALL EQUIPMENT SHOULD ONLY BE OPERATED BY TRAINED, QUALIFIED PERSONNEL. SPECIFICATIONS SUBJECT TO CHANGE WITHOUT NOTICE. ALWAYS CONSULT WITH CRANE MANUFACTURER BEFORE USE OR SETUP. ANY CAPACITIES OR LOAD RATINGS DISPLAYED HERE ARE FOR MARKETING PURPOSES ONLY AND MAY DIFFER FROM ACTUAL EQUIPMENT. ALWAYS CONSULT OPERATORS MANUAL AND CAPACITIES POSTED ON YOUR EQUIPMENT. BE SAFE!



**6635 SOUTH 13TH STREET
 MILWAUKEE, WISCONSIN 53221
 WWW.GIUFFRE.COM**

414-764-9200

MILWAUKEE • CHICAGO • SALT LAKE CITY • PHOENIX • PALM BEACH