



## HC285 | GENERAL DATA

---

### FEATURES:

**Capacity:** Maximum lift capacity of 285 US tons at 16' radius (258,5 tonnes at 4,9m).

**General:** High visibility air conditioned/heated cab with lift control console for easy operator access. Hydraulic motor slewing with wet type multi-disc brake. Four position pin type house lock.

**Self-Erecting Capability:** Utilizes a hydraulically actuated self-raising mast which incorporates a hydraulic lift cylinder at mast head for crawler track and boom assembly. Integral four cylinder carbody jacking system for loading/unloading. Mast is also utilized to install Counterweight Removal System. Mast stores in folded back position on rubber transport mounts to allow for a more compact transport footprint. Hydraulically actuated pins (boom foot, crawler track pins and counterweight removal system).

**Boom Hoist System:** Utilizes boom pendant bar boom support system. Pendant bars are stored on boom sections for transport. Dual drum boom hoist system (26mm wire rope). Dual load cell system.

**Improved transport:** Base machine weight less than 100,000 pounds with a shipping width of less than 10.5 feet (3,2m) and shipping height less than 12 feet (3,66m). Shipping weight less than 100,000 pounds (45,5 tonnes) with rope, without CWRS.

**Gradeability/Speed:** Maximum grade-ability of 30% with a maximum travel speed of 0.67mph (>1kmh). Slewing speed of 1.7 rpm. Crawler track width of 48 inches. Wet type multi-disc brake.

**Power:** Cummins QSL9 350HP (261kW) Tier 4 engine.

**Cold Weather Option:** Machine is equipped with provisions to allow for easy adaption to "Cold Weather" package.

**Load Hoist System:** Main and Auxiliary drums utilize 28mm wire rope with factory installed free fall option. Available with standard or rotation resistant rope. Boom mounted third drum available also.

**Jibs:** 16HL Fixed Jib available and boom inner is luffing jib ready (luffing jib to be developed).

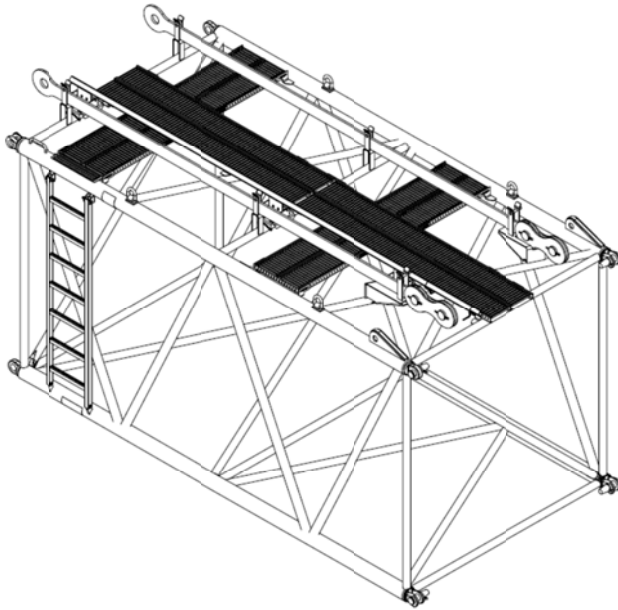
**Design:** Machine designed in accordance with ASME B30.5 standards.

**Load Limiting System:** Machine equipped with IHI's current generation ML-D7 load limiter system. Includes on-screen prompts, warnings, diagnostics and allows for setup of virtual wall limits. LMI user interface will be available in English, Spanish, and Portuguese.

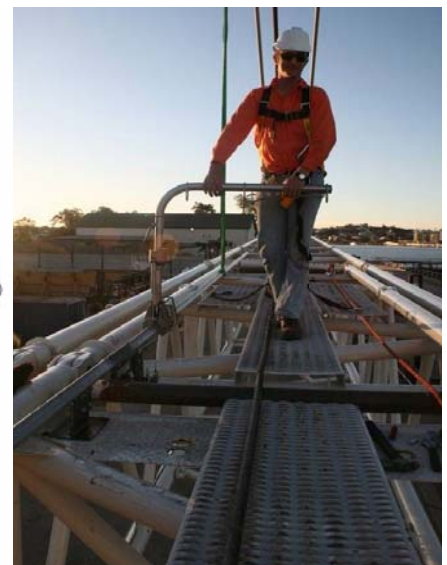
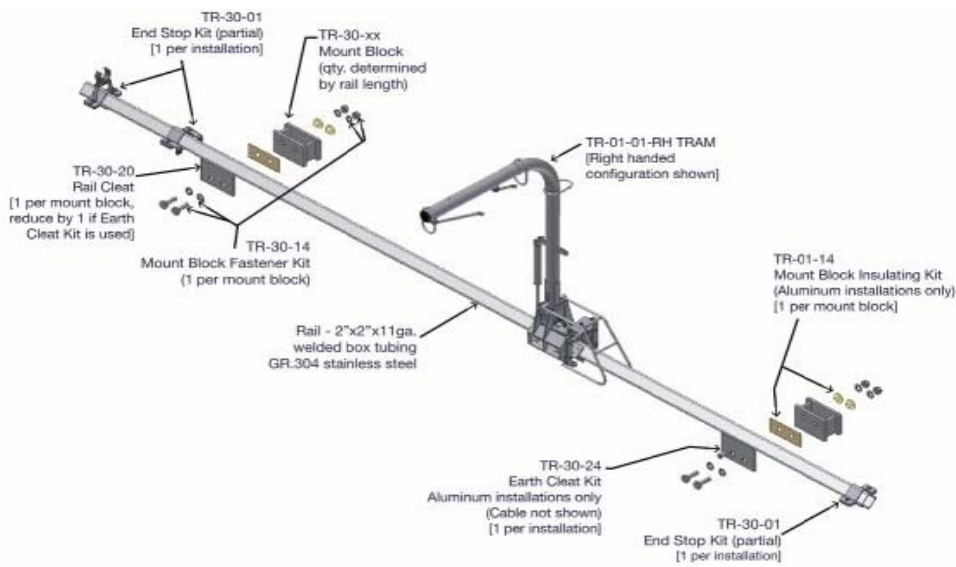
**Counterweight:** Total available counterweight is 262,785 lbs. Standard upper counterweight consists of one (1) base weighing 42,012 lbs, six (6) left hand overlays each weighing 13,955lbs & six (6) right hand overlays each weighing 12,809lbs with upper counterweight totaling 206,785lbs. Complete upper counterweight can be lifted into position at one time with no additional stacking required. Standard lower counterweight consists of two (2) carbody counterweights weighing 28,000lbs each for total lower counterweight of 56,000lbs.

**Control System:** Machine controller is an Omron PLC, operator cab includes engine diagnostic LCD display system along with an external "Christmas Tree" type Red, Yellow, Green indicator lamp. Additional safety/monitoring options available include boom lights, camera systems for backup and/or drum monitoring.

**C-DAC Boom:** Full length of boom is equipped with 20" (500mm) wide heavy duty non-slip aluminum walkways with Standfast fall prevention system with track guided travel tram that allows single point harness hookup for full length access for boom assembly/disassembly.



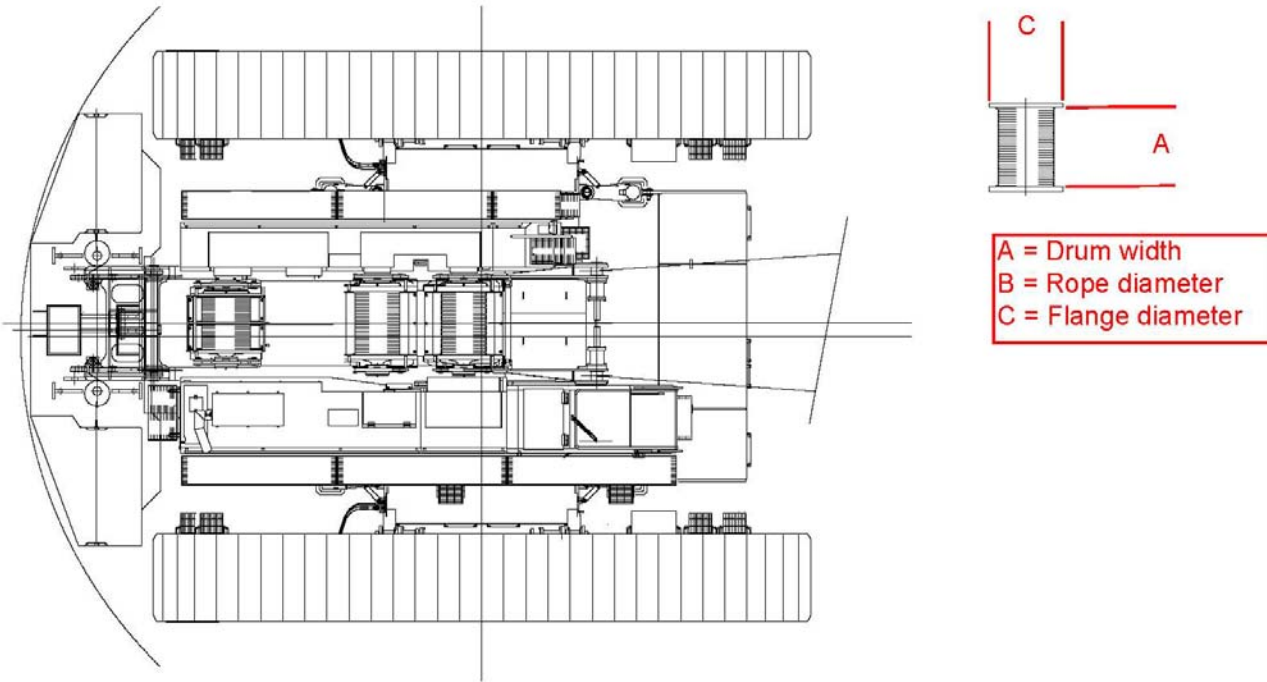
**HC285 Boom with pendant bars/fall prevention system**



## DRUM DATA:

(All dimensions metric except as noted)

Drum	A(mm)	B(mm)	C(mm)	Capacity(m)	Comments
Main	881	28	1080	500m	See below (Lebus lagging)
Aux	881	28	1080	500m	See below (Lebus lagging)
3 <sup>rd</sup>	TBD	TBD	TBD		Optional
J/H				(Terex)	Boom Inner mounted
B/H	Split Drum	26		178m (x2)	See below (Lebus lagging)



### Main/Aux Hoist:

Pull: 40,000lbs-6<sup>th</sup> Layer (178kN)

Speed: 497fpm-6<sup>th</sup> Layer (152m/min)

Capacity: 1640ft (500m)

Rope: 28mm (standard or rotation resistant available)

Brake: Wet disc type / Ratchet-pawl type drum lock

Free Fall: Optional

### Boom Hoist (Split Type):

Pull: 38,588lbs-1<sup>st</sup> Layer (172kN)

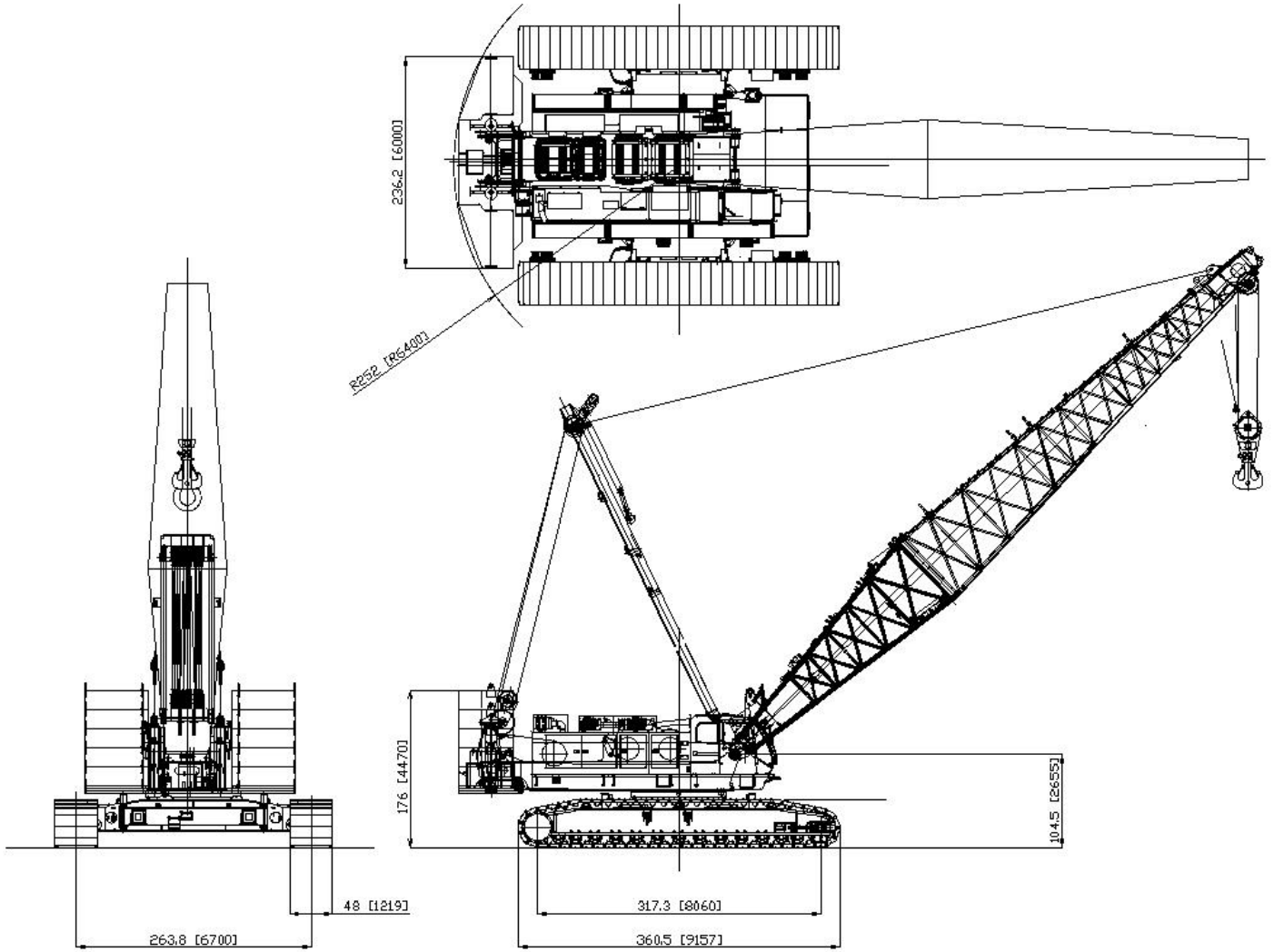
Speed: 245fpm-1<sup>st</sup> Layer (75m/min)

Capacity: 584ft x2 (178m x 2)

Brake: Wet disc type / Ratchet-pawl type drum lock

Rope: 26mm (Dyform 6)

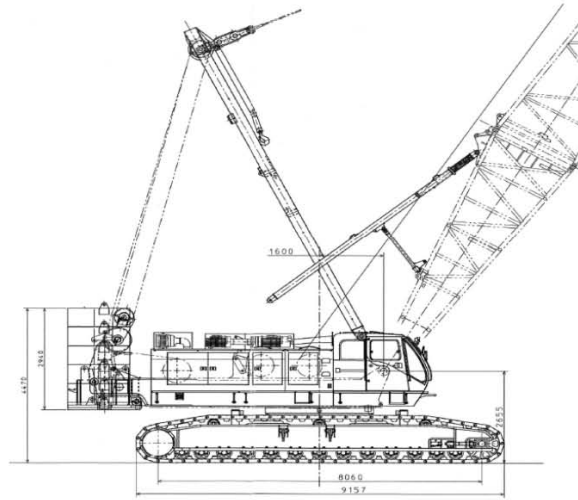
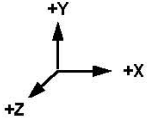
GENERAL DIMENSIONS:



HC285 BASIC MACHINE

GENERAL DATA:

CDAC 92HI OFFSET TIP BOOM  
**HC285 - CRAWLER CRANE DATASHEET**



\* See Notes

Description:	(ft)
Dist to Front tip point (+X)	11.089
Dist to Rear tip point (-X)	-11.254
* Effective Tracklength	22.343
Track Center-Center distance	21.982
Dist to Side tip point (+Z)	11.319
Dist to Side tip point (-Z)	-11.319
Crawler track width	4.000
Boom Foot (X)	5.249
Boom Foot (Y)	8.711
Boom CL Offset (Z)	-0.591
Mast Foot (X)	3.445
Mast Foot (Y)	11.991
Mast Length	30.348
Load Hoist CL (X)	-0.820
Load Hoist CL (Y)	9.203
Boom Hoist CL (X)	-16.486
Boom Hoist CL (Y)	11.663
Max. Boom Angle (°)	82.0

**WEIGHT AND C.G. DATA (CRANE)**

Description	Weight (kips)	C.G. ( X ) from rotation CL (ft)	Moment ( X ) (ft-kips)	C.G. ( Y ) from ground (ft)	Moment ( Y ) (ft-kips)	C.G. ( Z ) from rotation CL (ft)	Moment ( Z ) (ft-kips)
x UPPER ROTATING DECK	84.365	-6.293	-530.909	8.623	727.479	0.184	15.523
x CRAWLER LOWER (WITHOUT TRACKS)	21.477	0.000	0.000	2.343	50.321	0.000	0.000
x CRAWLER TRACKS (PAIR)	98.784	0.000	0.000	2.343	231.451	0.000	0.000
COMPOSITE CRANE	204.626	-2.595	-530.909	4.932	1,009.251	0.076	15.523

**WEIGHT AND C.G. DATA (COUNTERWEIGHT)**

Description	Weight (kips)	C.G. ( X ) from rotation CL (ft)	Moment ( X ) (ft-kips)	C.G. ( Y ) from ground (ft)	Moment ( Y ) (ft-kips)	C.G. ( Z ) from rotation CL (ft)	Moment ( Z ) (ft-kips)
x UPPER COUNTERWEIGHT (STD-207k)	26.770	-17.520	-469.002	9.252	247.676	0.000	0.000
x UPPER COUNTERWEIGHT (ALT-180k)	26.770	-17.520	-469.002	8.210	219.782	0.000	0.000
x UPPER COUNTERWEIGHT (ALT-153k)	26.770	-17.520	-469.002	7.168	191.887	0.000	0.000
x UPPER COUNTERWEIGHT (ALT-126k)	80.310	-17.520	-1,407.006	6.126	491.979	0.000	0.000
x UPPER COUNTERWEIGHT (BASE/CWRS)	46.165	-17.520	-808.796	5.100	235.442	0.000	0.000
x CARBODY COUNTERWEIGHT	56.000	0.000	0.000	3.478	194.768	0.000	0.000
COMPOSITE COUNTERWEIGHT	262.785	-13.786	-3,622.808	6.018	1,581.534	0.000	0.000

**WEIGHT AND C.G. DATA (COMPOSITE CRANE/COUNTERWEIGHT)**

Description	Weight (kips)	C.G. ( X ) from rotation CL (ft)	Moment ( X ) (ft-kips)	C.G. ( Y ) from ground (ft)	Moment ( Y ) (ft-kips)	C.G. ( Z ) from rotation CL (ft)	Moment ( Z ) (ft-kips)
COMPOSITE CRANE/COUNTERWEIGHT	467.411	-8.887	-4,153.717	5.543	2,590.785	0.033	15.523

HC285 with 80ft (24,4m) Boom:





Model HC285 Crawler Crane - Ratings In Pounds  
 92HI Offset Tip Boom (CDAC)  
 207,000 Pound Upper Counterweight  
 56,000 Pound Carbody Counterweight

CDAC

BOOM LENGTH (FEET)	RADIUS (FEET)	BOOM ANGLE (DEGREES)	360 DEGREE RATING (POUNDS)	FROM BOOM POINT TO GROUND (FEET)
65 FT (19.8 M) BOOM HEAVY LIFT OPTION	16	81.8	570,000	* 73
	20	78.2	466,340	* 72
	25	73.6	373,049	* 71
	30	69.0	310,968	* 69
	35	64.1	266,552	* 67
	40	59.0	227,438	64
	45	53.6	192,041	60
	50	47.8	165,616	56
	55	41.4	143,913	51
	60	34.0	121,850	* 44
65	24.5	92,980	* 34	
80 FT (24.4 M) BOOM	18	81.9	517,530	* 88
	20	80.5	465,900	* 87
	25	76.8	372,670	* 86
	30	73.1	310,660	* 85
	35	69.3	266,280	* 83
	40	65.3	226,430	81
	45	61.3	191,049	78
	50	57.1	164,978	75
	55	52.6	144,751	71
	60	47.9	128,823	67
	65	42.8	115,661	62
	70	37.1	104,514	56
75	30.4	93,628	48	
80	22.0	78,720	* 37	
90 FT (27.4 M) BOOM	20	81.5	465,600	* 98
	25	78.3	372,420	* 97
	30	75.0	310,450	* 95
	35	71.7	266,100	* 94
	40	68.2	225,810	92
	45	64.8	190,360	90
	50	61.1	164,290	87
	55	57.4	144,030	84
	60	53.5	128,128	80
	65	49.4	115,044	76
	70	45.0	104,326	71
	75	40.2	95,114	66
	80	34.8	87,036	59
	85	28.6	79,163	51
90	20.6	68,700	* 39	



Model HC285 Crawler Crane - Ratings In Pounds  
 92HI Offset Tip Boom (CDAC)  
 207,000 Pound Upper Counterweight  
 56,000 Pound Carbody Counterweight

CDAC

BOOM LENGTH (FEET)	RADIUS (FEET)	BOOM ANGLE (DEGREES)	360 DEGREE RATING (POUNDS)	FROM BOOM POINT TO GROUND (FEET)
100 FT (30.5 M) BOOM	21	81.8	443,260	* 108
	25	79.5	372,170	* 107
	30	76.5	310,250	* 106
	35	73.6	265,920	* 104
	40	70.5	225,340	103
	45	67.4	189,850	101
	50	64.3	163,760	98
	55	61.0	143,480	96
	60	57.7	127,580	92
	65	54.2	114,470	89
	70	50.5	103,789	85
	75	46.6	94,626	80
	80	42.5	86,803	75
	85	38.0	80,013	69
	90	32.9	73,933	62
95	27.0	68,083	53	
100	19.5	60,300	* 41	
110 FT (33.5 M) BOOM	22	82.0	422,730	* 118
	25	80.4	371,930	* 117
	30	77.8	310,050	* 116
	35	75.1	265,740	* 115
	40	72.4	224,710	113
	45	69.6	189,160	111
	50	66.8	163,050	109
	55	63.9	142,740	107
	60	60.9	126,830	104
	65	57.9	113,710	101
	70	54.7	103,040	98
	75	51.4	93,870	94
	80	48.0	86,029	89
	85	44.3	79,257	85
	90	40.4	73,359	79
95	36.1	68,296	72	
100	31.3	63,553	65	
105	25.7	58,923	55	
110	18.6	53,130	* 42	





Model HC285 Crawler Crane - Ratings In Pounds  
 92HI Offset Tip Boom (CDAC)  
 207,000 Pound Upper Counterweight  
 56,000 Pound Carbody Counterweight

CDAC

BOOM LENGTH (FEET)	RADIUS (FEET)	BOOM ANGLE (DEGREES)	360 DEGREE RATING (POUNDS)	FROM BOOM POINT TO GROUND (FEET)
120 FT (36.6 M) BOOM	24	81.7	387,290	* 127
	25	81.2	371,680	* 127
	30	78.8	309,860	* 126
	35	76.4	265,570	* 125
	40	73.9	224,220	124
	45	71.4	188,620	122
	50	68.8	162,500	120
	55	66.2	142,160	118
	60	63.6	126,260	116
	65	60.9	113,120	113
	70	58.1	102,460	110
	75	55.2	93,270	106
	80	52.2	85,420	103
	85	49.1	78,640	98
	90	45.8	72,740	94
	95	42.3	67,728	88
	100	38.6	63,102	82
105	34.5	58,958	76	
110	29.9	55,173	67	
115	24.6	51,460	57	
120	17.7	46,920	* 44	
130 FT (39.6 M) BOOM	25	81.9	348,700	* 137
	30	79.7	309,660	* 136
	35	77.4	265,390	* 135
	40	75.2	224,430	134
	45	72.9	188,860	133
	50	70.5	162,780	131
	55	68.2	142,450	129
	60	65.8	126,580	127
	65	63.3	113,440	124
	70	60.8	102,810	122
	75	58.2	93,620	118
	80	55.6	85,770	115
	85	52.8	79,000	111
	90	50.0	73,090	107
	95	47.0	68,120	103
	100	43.9	63,500	98
	105	40.6	59,388	92
110	37.0	55,683	86	
115	33.1	52,323	78	
120	28.7	49,233	70	
125	23.6	46,160	59	
130	17.0	42,370	* 45	



Model HC285 Crawler Crane - Ratings In Pounds  
 92HI Offset Tip Boom (CDAC)  
 207,000 Pound Upper Counterweight  
 56,000 Pound Carbody Counterweight

CDAC

BOOM LENGTH (FEET)	RADIUS (FEET)	BOOM ANGLE (DEGREES)	360 DEGREE RATING (POUNDS)	FROM BOOM POINT TO GROUND (FEET)
140 FT (42.7 M) BOOM	27	81.7	319,932	* 147
	30	80.4	309,038	* 147
	35	78.4	267,010	* 146
	40	76.2	223,970	144
	45	74.1	188,320	143
	50	72.0	162,220	141
	55	69.8	141,850	140
	60	67.6	125,970	138
	65	65.4	112,800	135
	70	63.1	102,170	133
	75	60.7	92,970	130
	80	58.3	85,100	127
	85	55.9	78,320	124
	90	53.4	72,400	120
	95	50.7	67,430	116
	100	48.0	62,800	112
	105	45.2	58,680	107
	110	42.2	54,960	102
	115	39.0	51,619	96
	120	35.6	48,575	89
125	31.8	45,800	81	
130	27.6	43,219	72	
135	22.7	40,675	61	
140	16.4	37,580	* 47	
150 FT (45.7 M) BOOM	28	81.9	306,319	* 157
	30	81.1	297,755	* 157
	35	79.1	259,750	* 156
	40	77.2	223,430	155
	45	75.2	187,740	153
	50	73.2	161,640	152
	55	71.2	141,240	150
	60	69.2	125,380	148
	65	67.1	112,190	146
	70	65.0	101,580	144
	75	62.9	92,360	142
	80	60.7	84,490	139
	85	58.5	77,690	136
	90	56.2	71,760	133
	95	53.8	66,830	129
	100	51.4	62,190	125
	105	48.9	58,060	121
	110	46.3	54,340	116
	115	43.6	50,990	111
	120	40.7	47,940	105
125	37.6	45,169	99	
130	34.3	42,645	92	
135	30.7	40,311	84	
140	26.6	38,115	75	
145	21.9	35,930	63	
150	15.8	33,310	* 48	



Model HC285 Crawler Crane - Ratings In Pounds  
 92HI Offset Tip Boom (CDAC)  
 207,000 Pound Upper Counterweight  
 56,000 Pound Carbody Counterweight

CDAC

BOOM LENGTH (FEET)	RADIUS (FEET)	BOOM ANGLE (DEGREES)	360 DEGREE RATING (POUNDS)	FROM BOOM POINT TO GROUND (FEET)	
160 FT (48.8 M) BOOM	29	82.0	282,407	*	167
	30	81.6	278,468	*	167
	35	79.8	253,780	*	166
	40	78.0	222,940		165
	45	76.2	187,180		164
	50	74.3	161,040		162
	55	72.4	140,610		161
	60	70.5	124,730		159
	65	68.6	111,530		157
	70	66.7	100,920		155
	75	64.7	91,690		153
	80	62.7	83,800		150
	85	60.6	76,990		147
	90	58.6	71,040		144
	95	56.4	66,120		141
	100	54.2	61,480		138
	105	52.0	57,340		134
	110	49.6	53,610		130
	115	47.2	50,250		125
	120	44.7	47,190		120
125	42.1	44,420		115	
130	39.3	41,880		109	
135	36.4	39,539		102	
140	33.2	37,386		95	
145	29.7	35,395		87	
150	25.8	33,688		77	
155	21.2	31,783		65	
160	15.3	29,440		* 49	



Model HC285 Crawler Crane - Ratings In Pounds  
 92HI Offset Tip Boom (CDAC)  
 207,000 Pound Upper Counterweight  
 56,000 Pound Carbody Counterweight

CDAC

BOOM LENGTH (FEET)	RADIUS (FEET)	BOOM ANGLE (DEGREES)	360 DEGREE RATING (POUNDS)	FROM BOOM POINT TO GROUND (FEET)	
170 FT (51.8 M) BOOM	31	81.8	267,048	*	177
	35	80.4	247,030	*	176
	40	78.7	218,720	*	175
	45	77.0	186,580		174
	50	75.2	160,450		173
	55	73.5	139,990		171
	60	71.7	124,120		170
	65	69.9	110,900		168
	70	68.1	100,310		166
	75	66.3	91,060		164
	80	64.4	83,170		161
	85	62.5	76,340		159
	90	60.6	70,380		156
	95	58.6	65,500		153
	100	56.6	60,850		150
	105	54.6	56,690		146
	110	52.5	52,960		143
	115	50.3	49,590		139
	120	48.1	46,530		134
	125	45.7	43,760		129
130	43.3	41,210		124	
135	40.8	38,870		119	
140	38.1	36,720		112	
145	35.2	34,729		106	
150	32.1	33,106		98	
155	28.8	31,365		89	
160	25.0	29,719		79	
165	20.5	28,035		67	
170	14.8	25,910		* 51	



Model HC285 Crawler Crane - Ratings In Pounds  
 92HI Offset Tip Boom (CDAC)  
 207,000 Pound Upper Counterweight  
 56,000 Pound Carbody Counterweight

CDAC

BOOM LENGTH (FEET)	RADIUS (FEET)	BOOM ANGLE (DEGREES)	360 DEGREE RATING (POUNDS)	FROM BOOM POINT TO GROUND (FEET)	
180 FT (54.9 M) BOOM	32	81.9	226,860	*	187
	35	81.0	220,030	*	186
	40	79.4	209,350	*	185
	45	77.7	186,770		184
	50	76.1	160,260		183
	55	74.4	139,830		182
	60	72.8	124,010		180
	65	71.1	110,790		179
	70	69.4	100,240		177
	75	67.7	91,010		175
	80	65.9	83,130		173
	85	64.2	76,310		170
	90	62.4	70,360		168
	95	60.6	65,510		165
	100	58.7	60,860		162
	105	56.8	56,720		159
	110	54.9	52,980		155
	115	52.9	49,620		151
	120	50.9	46,570		147
	125	48.8	43,790		143
130	46.6	41,240		139	
135	44.4	38,910		134	
140	42.0	36,760		128	
145	39.6	34,770		122	
150	37.0	33,190		116	
155	34.2	31,469		109	
160	31.2	29,866		101	
165	27.9	28,353		92	
170	24.2	26,892		81	
175	19.9	25,378		69	
180	14.4	23,330		* 52	



Model HC285 Crawler Crane - Ratings In Pounds  
 92HI Offset Tip Boom (CDAC)  
 207,000 Pound Upper Counterweight  
 56,000 Pound Carbody Counterweight

CDAC

BOOM LENGTH (FEET)	RADIUS (FEET)	BOOM ANGLE (DEGREES)	360 DEGREE RATING (POUNDS)	FROM BOOM POINT TO GROUND (FEET)	
190 FT (57.9 M) BOOM	34	81.8	209,580	*	197
	35	81.4	207,020	*	196
	40	79.9	198,500	*	196
	45	78.4	186,340		195
	50	76.8	159,780		193
	55	75.3	139,300		192
	60	73.7	123,470		191
	65	72.1	110,230		189
	70	70.5	99,680		187
	75	68.9	90,420		186
	80	67.3	82,520		183
	85	65.6	75,690		181
	90	64.0	69,730		179
	95	62.3	64,890		176
	100	60.5	60,230		173
	105	58.8	56,070		170
	110	57.0	52,330		167
	115	55.2	48,960		164
	120	53.3	45,900		160
	125	51.4	43,120		156
	130	49.4	40,560		152
135	47.4	38,220		148	
140	45.3	36,060		143	
145	43.1	34,070		138	
150	40.8	32,520		132	
155	38.4	30,790		126	
160	35.9	29,170		119	
165	33.2	27,669		112	
170	30.3	26,256		103	
175	27.2	24,923		94	
180	23.6	23,633		83	
185	19.4	22,273		70	
190	14.0	20,380	*	53	



Model HC285 Crawler Crane - Ratings In Pounds  
 92HI Offset Tip Boom (CDAC)  
 207,000 Pound Upper Counterweight  
 56,000 Pound Carbody Counterweight

CDAC

BOOM LENGTH (FEET)	RADIUS (FEET)	BOOM ANGLE (DEGREES)	360 DEGREE RATING (POUNDS)	FROM BOOM POINT TO GROUND (FEET)	
200 FT (61 M) BOOM	35	81.9	201,290	*	207
	40	80.4	191,130	*	206
	45	79.0	182,060	*	205
	50	77.5	159,180		204
	55	76.0	138,690		202
	60	74.5	122,870		201
	65	73.1	109,610		200
	70	71.5	99,080		198
	75	70.0	89,810		196
	80	68.5	81,900		194
	85	66.9	75,060		192
	90	65.4	69,100		190
	95	63.8	64,280		188
	100	62.2	59,610		185
	105	60.5	55,450		182
	110	58.9	51,710		179
	115	57.2	48,330		176
	120	55.4	45,270		173
	125	53.7	42,480		169
	130	51.8	39,920		165
	135	50.0	37,570		161
	140	48.1	35,420		157
	145	46.1	33,760		152
150	44.1	31,890		147	
155	42.0	30,170		141	
160	39.7	28,550		135	
165	37.4	27,050		129	
170	35.0	25,630		122	
175	32.4	24,309		115	
180	29.5	23,056		106	
185	26.4	21,882		96	
190	23.0	20,719		85	
195	18.9	19,485		72	
200	13.6	17,650		* 54	



Model HC285 Crawler Crane - Ratings In Pounds  
 92HI Offset Tip Boom (CDAC)  
 207,000 Pound Upper Counterweight  
 56,000 Pound Carbody Counterweight

CDAC

BOOM LENGTH (FEET)	RADIUS (FEET)	BOOM ANGLE (DEGREES)	360 DEGREE RATING (POUNDS)	FROM BOOM POINT TO GROUND (FEET)	
210 FT (64 M) BOOM	36	82.0	186,570	*	217
	40	80.9	180,590	*	216
	45	79.5	171,700	*	215
	50	78.1	158,670		214
	55	76.7	138,610		213
	60	75.3	122,290		212
	65	73.9	109,020		210
	70	72.5	98,480		209
	75	71.0	89,200		207
	80	69.6	81,270		205
	85	68.1	74,410		203
	90	66.6	68,440		201
	95	65.1	63,630		199
	100	63.6	58,950		196
	105	62.1	54,790		194
	110	60.5	51,040		191
	115	58.9	47,650		188
	120	57.3	44,580		185
	125	55.6	41,780		181
	130	54.0	39,210		178
	135	52.3	36,860		174
	140	50.5	34,700		170
	145	48.7	33,070		166
	150	46.8	31,200		161
	155	44.9	29,460		156
	160	42.9	27,840		151
165	40.9	26,340		145	
170	38.7	24,920		139	
175	36.5	23,590		132	
180	34.1	22,350		125	
185	31.6	21,169		117	
190	28.8	20,056		109	
195	25.8	19,002		99	
200	22.4	17,958		87	
205	18.4	16,813		74	
210	13.3	15,080	*	55	





Model HC285 Crawler Crane - Ratings In Pounds  
 92HI Offset Tip Boom (CDAC)  
 207,000 Pound Upper Counterweight  
 56,000 Pound Carbody Counterweight

CDAC

BOOM LENGTH (FEET)	RADIUS (FEET)	BOOM ANGLE (DEGREES)	360 DEGREE RATING (POUNDS)	FROM BOOM POINT TO GROUND (FEET)	
220 FT (67.1 M) BOOM	38	81.8	175,780	*	226
	40	81.3	174,380	*	226
	45	80.0	165,520	*	225
	50	78.7	158,570		224
	55	77.3	138,010		223
	60	76.0	121,670		222
	65	74.6	108,380		221
	70	73.3	97,860		219
	75	71.9	88,570		217
	80	70.5	80,630		216
	85	69.1	73,770		214
	90	67.7	68,270		212
	95	66.3	63,000		210
	100	64.9	58,320		207
	105	63.4	54,140		205
	110	62.0	50,390		202
	115	60.5	47,010		199
	120	59.0	43,930		196
	125	57.4	41,130		193
	130	55.9	38,560		190
	135	54.3	36,200		186
	140	52.6	34,030		183
145	51.0	32,440		179	
150	49.3	30,570		174	
155	47.5	28,830		170	
160	45.7	27,210		165	
165	43.8	25,690		160	
170	41.9	24,280		155	
175	39.9	22,940		149	
180	37.8	21,690		142	
185	35.6	20,520		136	
190	33.3	19,410		128	
195	30.8	18,359		120	
200	28.1	17,365		111	
205	25.2	16,410		101	
210	21.9	15,471		89	
215	18.0	14,395		75	
220	12.9	12,660		* 57	



Model HC285 Crawler Crane - Ratings In Pounds  
 92HI Offset Tip Boom (CDAC)  
 207,000 Pound Upper Counterweight  
 56,000 Pound Carbody Counterweight

CDAC

BOOM LENGTH (FEET)	RADIUS (FEET)	BOOM ANGLE (DEGREES)	360 DEGREE RATING (POUNDS)	FROM BOOM POINT TO GROUND (FEET)	
230 FT (70.1 M) BOOM	39	81.9	143,390	*	236
	40	81.7	143,090	*	236
	45	80.4	141,640	*	235
	50	79.2	140,190	*	234
	55	77.9	134,600	*	233
	60	76.6	121,320		232
	65	75.3	108,060		231
	70	74.0	97,580		229
	75	72.7	88,300		228
	80	71.4	80,380		226
	85	70.1	73,530		225
	90	68.8	68,070		223
	95	67.4	62,800		221
	100	66.1	58,130		218
	105	64.7	53,960		216
	110	63.3	50,210		214
	115	61.9	46,830		211
	120	60.5	43,760		208
	125	59.0	40,960		205
	130	57.5	38,400		202
	135	56.0	36,050		199
	140	54.5	33,880		195
	145	53.0	32,320		191
	150	51.4	30,450		188
	155	49.8	28,720		183
	160	48.1	27,100		179
	165	46.4	25,590		174
	170	44.6	24,170		169
	175	42.8	22,840		164
	180	40.9	21,600		158
185	39.0	20,420		152	
190	36.9	19,310		146	
195	34.8	18,260		139	
200	32.5	17,270		131	
205	30.1	16,339		123	
210	27.5	15,444		114	
215	24.6	14,588		103	
220	21.4	13,730		91	
225	17.6	12,700		77	
230	12.6	10,910	*	58	



Model HC285 Crawler Crane - Ratings In Pounds  
 92HI Offset Tip Boom (CDAC)  
 207,000 Pound Upper Counterweight  
 56,000 Pound Carbody Counterweight

CDAC

BOOM LENGTH (FEET)	RADIUS (FEET)	BOOM ANGLE (DEGREES)	360 DEGREE RATING (POUNDS)	FROM BOOM POINT TO GROUND (FEET)	
240 FT (73.2 M) BOOM	41	81.8	130,510	*	246
	45	80.8	129,350	*	245
	50	79.6	127,960	*	245
	55	78.4	126,560	*	244
	60	77.2	120,840		242
	65	75.9	108,090		241
	70	74.7	97,060		240
	75	73.5	87,760		238
	80	72.2	79,810		237
	85	71.0	72,940		235
	90	69.7	67,490		233
	95	68.4	62,210		231
	100	67.1	57,530		229
	105	65.8	53,350		227
	110	64.5	49,610		225
	115	63.2	46,210		222
	120	61.8	43,130		220
	125	60.4	40,320		217
	130	59.0	37,760		214
	135	57.6	35,400		211
	140	56.2	33,230		207
	145	54.8	31,690		204
	150	53.3	29,810		200
	155	51.8	28,070		196
160	50.2	26,450		192	
165	48.6	24,930		188	
170	47.0	23,520		183	
175	45.3	22,190		178	
180	43.6	20,930		173	
185	41.9	19,750		168	
190	40.0	18,640		162	
195	38.1	17,590		156	
200	36.1	16,600		149	
205	34.0	15,660		142	
210	31.8	14,770		134	
215	29.4	13,919		125	
220	26.9	13,114		116	
225	24.1	12,326		105	
230	20.9	11,525		93	
235	17.2	10,560		78	
240	12.4	8,780	*	59	



Model HC285 Crawler Crane - Ratings In Pounds  
 92HI Offset Tip Boom (CDAC)  
 207,000 Pound Upper Counterweight  
 56,000 Pound Carbody Counterweight

CDAC

BOOM LENGTH (FEET)	RADIUS (FEET)	BOOM ANGLE (DEGREES)	360 DEGREE RATING (POUNDS)	FROM BOOM POINT TO GROUND (FEET)	
250 FT (76.2 M) BOOM	42	81.9	125,280	*	256
	45	81.2	124,410	*	256
	50	80.0	123,030	*	255
	55	78.9	121,630	*	254
	60	77.7	118,010	*	253
	65	76.5	107,490		252
	70	75.3	96,450		250
	75	74.1	87,140		249
	80	73.0	79,190		247
	85	71.7	72,310		246
	90	70.5	66,890		244
	95	69.3	61,600		242
	100	68.1	56,920		240
	105	66.8	52,740		238
	110	65.6	48,980		236
	115	64.3	45,580		233
	120	63.0	42,510		231
	125	61.7	39,690		228
	130	60.4	37,120		225
	135	59.1	34,760		222
	140	57.7	33,090		219
	145	56.4	31,080		216
	150	55.0	29,190		213
	155	53.6	27,450		209
	160	52.1	25,830		205
	165	50.6	24,310		201
	170	49.1	22,890		197
	175	47.6	21,550		192
	180	46.0	20,310		188
	185	44.4	19,130		183
190	42.7	18,010		177	
195	41.0	16,950		172	
200	39.2	15,960		166	
205	37.3	15,020		159	
210	35.4	14,130		152	
215	33.3	13,280		145	
220	31.1	12,480		137	
225	28.8	11,708		128	
230	26.3	10,974		118	
235	23.6	10,265		107	
240	20.5	9,529		95	
245	16.8	8,598		80	
250	12.1	6,790	*	60	



Model HC285 Crawler Crane - Ratings In Pounds  
 92HI Offset Tip Boom (CDAC)  
 207,000 Pound Upper Counterweight  
 56,000 Pound Carbody Counterweight

CDAC

BOOM LENGTH (FEET)	RADIUS (FEET)	BOOM ANGLE (DEGREES)	360 DEGREE RATING (POUNDS)	FROM BOOM POINT TO GROUND (FEET)	
260 FT (79.2 M) BOOM	43	82.0	117,860	*	266
	45	81.5	117,290	*	266
	50	80.4	115,960	*	265
	55	79.3	114,650	*	264
	60	78.2	111,470	*	263
	65	77.0	106,310	*	262
	70	75.9	95,900		261
	75	74.8	86,570		259
	80	73.6	78,600		258
	85	72.5	71,720		256
	90	71.3	66,290		255
	95	70.1	61,000		253
	100	69.0	56,310		251
	105	67.8	52,110		249
	110	66.6	48,340		247
	115	65.4	44,940		244
	120	64.1	41,850		242
	125	62.9	39,030		240
	130	61.7	36,460		237
	135	60.4	34,090		234
	140	59.1	32,450		231
	145	57.8	30,420		228
	150	56.5	28,550		225
	155	55.2	26,790		221
	160	53.8	25,160		218
	165	52.4	23,640		214
	170	51.0	22,220		210
	175	49.6	20,880		206
	180	48.1	19,620		201
	185	46.6	18,440		197
190	45.1	17,330		192	
195	43.5	16,270		187	
200	41.8	15,270		181	
205	40.1	14,330		175	
210	38.4	13,430		169	
215	36.6	12,580		162	
220	34.7	11,760		155	
225	32.6	10,990		148	
230	30.5	10,260		140	
235	28.3	9,558		131	
240	25.8	8,893		121	
245	23.1	8,234		109	
250	20.1	7,554		97	
255	16.5	6,658		81	
260	11.9	4,850	*	61	



Model HC285 Crawler Crane - Ratings In Pounds  
 92HI Offset Tip Boom (CDAC)  
 207,000 Pound Upper Counterweight  
 56,000 Pound Carbody Counterweight

CDAC

BOOM LENGTH (FEET)	RADIUS (FEET)	BOOM ANGLE (DEGREES)	360 DEGREE RATING (POUNDS)	FROM BOOM POINT TO GROUND (FEET)	
270 FT (82.3 M) BOOM	45	81.9	113,580	*	276
	50	80.8	112,210	*	275
	55	79.7	111,070	*	274
	60	78.6	107,700	*	273
	65	77.5	102,530	*	272
	70	76.4	95,280		271
	75	75.4	85,940		270
	80	74.3	77,960		268
	85	73.1	71,070		267
	90	72.0	65,670		265
	95	70.9	60,370		263
	100	69.8	55,680		262
	105	68.6	51,480		260
	110	67.5	47,710		258
	115	66.3	44,300		255
	120	65.2	41,210		253
	125	64.0	38,390		251
	130	62.8	35,810		248
	135	61.6	33,440		246
	140	60.4	31,820		243
	145	59.2	29,790		240
	150	57.9	27,910		237
	155	56.6	26,160		233
	160	55.4	24,530		230
	165	54.0	23,010		226
	170	52.7	21,580		223
175	51.4	20,240		219	
180	50.0	18,980		215	
185	48.6	17,800		210	
190	47.1	16,680		206	
195	45.7	15,620		201	
200	44.2	14,630		196	
205	42.6	13,680		190	
210	41.0	12,770		185	
215	39.4	11,930		179	
220	37.6	11,110		172	
225	35.8	10,340		166	
230	34.0	9,610		158	
235	32.0	8,900		151	
240	29.9	8,240		142	
245	27.7	7,600		133	
250	25.3	6,980		123	
255	22.7	6,400		111	
260	19.7	5,850		98	



Model HC285 Crawler Crane - Ratings In Pounds  
 92HI Offset Tip Boom (CDAC)  
 207,000 Pound Upper Counterweight  
 56,000 Pound Carbody Counterweight

CDAC

BOOM LENGTH (FEET)	RADIUS (FEET)	BOOM ANGLE (DEGREES)	360 DEGREE RATING (POUNDS)	FROM BOOM POINT TO GROUND (FEET)	
280 FT (85.3 M) BOOM	46	81.9	93,940	*	286
	50	81.1	92,930	*	285
	55	80.1	91,760	*	284
	60	79.0	90,550	*	283
	65	78.0	89,350	*	282
	70	76.9	88,230	*	281
	75	75.9	84,990	*	280
	80	74.8	77,580		279
	85	73.8	71,340		277
	90	72.7	65,330		276
	95	71.6	60,040		274
	100	70.5	55,350		272
	105	69.4	51,150		270
	110	68.3	47,390		268
	115	67.2	43,990		266
	120	66.1	40,910		264
	125	65.0	38,100		262
	130	63.9	35,520		259
	135	62.7	33,160		257
	140	61.5	31,560		254
	145	60.4	29,540		251
	150	59.2	27,670		248
	155	58.0	25,930		245
	160	56.8	24,290		242
	165	55.5	22,770		239
	170	54.3	21,350		235
175	53.0	20,020		231	
180	51.7	18,760		228	
185	50.4	17,580		223	
190	49.0	16,460		219	
195	47.6	15,400		215	
200	46.2	14,410		210	
205	44.8	13,460		205	
210	43.3	12,570		200	
215	41.8	11,710		194	
220	40.2	10,900		188	
225	38.6	10,130		182	
230	36.9	9,390		176	
235	35.2	8,700		169	
240	33.3	8,030		161	
245	31.4	7,390		153	
250	29.4	6,780		145	
255	27.2	6,200		135	
260	24.8	5,650		125	



Model HC285 Crawler Crane - Ratings In Pounds  
 92HI Offset Tip Boom (CDAC)  
 207,000 Pound Upper Counterweight  
 56,000 Pound Carbody Counterweight

CDAC

BOOM LENGTH (FEET)	RADIUS (FEET)	BOOM ANGLE (DEGREES)	360 DEGREE RATING (POUNDS)	FROM BOOM POINT TO GROUND (FEET)	
290 FT (88.4 M) BOOM	47	82.0	86,920	*	296
	50	81.4	86,240	*	295
	55	80.4	85,030	*	294
	60	79.4	83,870	*	294
	65	78.4	82,700	*	293
	70	77.4	81,610	*	291
	75	76.4	80,000	*	290
	80	75.4	77,710		289
	85	74.3	70,810		288
	90	73.3	64,790		286
	95	72.3	59,490		285
	100	71.2	54,780		283
	105	70.2	50,580		281
	110	69.1	46,810		279
	115	68.1	43,400		277
	120	67.0	40,310		275
	125	65.9	37,490		273
	130	64.8	34,910		271
	135	63.7	32,540		268
	140	62.6	30,970		266
	145	61.5	28,940		263
	150	60.4	27,060		260
	155	59.2	25,310		257
	160	58.1	23,680		254
	165	56.9	22,150		251
	170	55.7	20,730		247
	175	54.5	19,390		244
	180	53.2	18,130		240
185	52.0	16,940		236	
190	50.7	15,820		232	
195	49.4	14,770		228	
200	48.1	13,760		224	
205	46.8	12,810		219	
210	45.4	11,910		214	
215	44.0	11,050		209	
220	42.5	10,250		204	
225	41.0	9,470		198	
230	39.5	8,730		192	
235	37.9	8,030		186	
240	36.3	7,360		179	
245	34.5	6,710		172	
250	32.7	6,100		164	





Model HC285 Crawler Crane - Ratings In Pounds  
 92HI Offset Tip Boom (CDAC)  
 207,000 Pound Upper Counterweight  
 56,000 Pound Carbody Counterweight

CDAC

BOOM LENGTH (FEET)	RADIUS (FEET)	BOOM ANGLE (DEGREES)	360 DEGREE RATING (POUNDS)	FROM BOOM POINT TO GROUND (FEET)	
300 FT (91.4 M) BOOM	49	81.9	84,590	*	306
	50	81.7	84,340	*	305
	55	80.7	83,120	*	305
	60	79.8	81,930	*	304
	65	78.8	80,770	*	303
	70	77.8	79,670	*	302
	75	76.8	79,420	*	301
	80	75.9	75,590	*	299
	85	74.9	70,210		298
	90	73.9	64,190		297
	95	72.9	58,880		295
	100	71.9	54,170		293
	105	70.9	49,970		292
	110	69.9	46,190		290
	115	68.8	42,780		288
	120	67.8	39,680		286
	125	66.8	36,860		284
	130	65.7	34,280		282
	135	64.7	32,550		279
	140	63.6	30,360		277
	145	62.5	28,330		274
	150	61.4	26,450		272
	155	60.3	24,700		269
	160	59.2	23,070		266
	165	58.1	21,530		263
	170	57.0	20,110		259
	175	55.8	18,770		256
	180	54.7	17,510		253
185	53.5	16,320		249	
190	52.3	15,200		245	
195	51.1	14,140		241	
200	49.8	13,140		237	
205	48.5	12,190		233	
210	47.3	11,290		228	
215	45.9	10,430		223	
220	44.6	9,610		218	
225	43.2	8,830		213	
230	41.8	8,100		207	
235	40.3	7,390		202	
240	38.8	6,720		196	



CDAC

 **WARNING**

This rating chart is invalid if the crane has been modified or altered by use of other than GENUINE TEREX PARTS as such modifications or alterations may affect its capacity or safe operation. See Terex Service Bulletin #259.

Ratings in this chart are in POUNDS and do not exceed the percentage of tipping specified for this crane by ANSI B30.5. All ratings require that the crane be standing level on a firm uniformly supporting surface.

Do not lift loads in excess of those shown on this chart. Lifting loads in excess of those shown or operation not in accordance with good operating practice, including limitations shown on page 3499HC of Operator's Manual, can cause tipping, structural damage or catastrophic failure.

Asterisk (\*) areas on this chart indicate ratings that are limited by strength of material or factors other than stability (tipping).

" RADIUS IN FEET " is the horizontal distance at ground level from the crane centerline of rotation to a vertical line through the center of gravity of the suspended load.

When using the main boom fall with boom tip extension in place, the main fall ratings must be reduced by the weight of the boom tip extension plus twice the weight of all suspended blocks, slings, rope, etc., at the boom tip extension fall. See Appendix A.

Blocks, slings, buckets and other load carrying devices are considered part of the load. The weight of standard hoisting ropes for the rating at a given radius has been calculated as part of the boom point load and need not be considered in determining net allowable loads. See Appendix A.

This chart was developed exclusively for use with a boom only. Under no circumstances are these ratings to be interpreted for use with a jib.

Ratings shown on this chart make no allowance for such factors as out of plumb loads, wind, poor soil conditions, and dynamic effects due to excessive operating speeds. The user (operator) must exercise judgment to make allowance for these conditions. See page 3499HC of Operator's Manual for detailed information.

No account is taken of the wind force on the load. The user must consider this effect, which can be substantial for loads with large surface areas. In any wind it is strongly recommended that taglines be used to control the load.



**CDAC**

BOOM HOIST LINE is 22 parts of 26 mm diameter BRIDON ENDURANCE DYFORM 6, 6x31, WS, RRL, IWRC, EIPS wire rope with a minimum breaking strength of 125,670 pounds.

BOOM PENDANT SUSPENSION is 2 part pendant bar suspension (*See HC285 Part's Manual*).

MAIN LOAD LINE is 28 mm diameter ENDURANCE DYFORM 6, 6x31, WS, RRL IWRC, EIPS wire rope with a minimum breaking strength of 143,000 pounds.

ALTERNATE LOAD LINE (ROTATION RESISTANT) is 28 mm diameter BRIDON ENDURANCE DYFORM 34LR Grade 2160 wire rope with a minimum breaking strength of 170,400 pounds.

ERECTION

Erection "OVER-THE-END BLOCKED" is with the boom over the idler end with idler tumblers blocked (*See HC285 Operator's Manual* for blocking instructions). Erection "OVER-THE-SIDE" is with the boom 90° to the side frames. Blocks, slings and other load carrying devices must be on the ground during erection.

92HI OFFSET TIP BOOM MAXIMUM BOOM & JIB SELF-ERECTION DATA				
JIB	OVER-THE-SIDE		OVER-THE-END BLOCKED	
	BOOM LENGTH (FEET)	JIB LENGTH (FEET)	BOOM LENGTH (FEET)	JIB LENGTH (FEET)
16HL	280	0	300	0
	270	0	290	0
	260	90	280	90
	250	100	270	100



Model HC285 Crawler Crane - Ratings In Pounds  
 92HI Offset Tip Boom (CDAC)  
 207,000 Pound Upper Counterweight  
 56,000 Pound Carbody Counterweight

CDAC

LOAD HOISTING INFORMATION - 28mm diameter DYFORM 6 wire rope			
MAXIMUM LIFTING CAPACITY - LBS.	MINIMUM PARTS OF LINE	MAXIMUM HOISTING DISTANCE - FEET	
		MAIN HOIST	AUX HOIST
570,000 <sup>1</sup>	14	90	90
490,280	12	105	105
449,420	11	115	115
408,570	10	130	130
367,710	9	145	145
326,850	8	160	160
285,990	7	185	185
245,140	6	215	215
204,280	5	260	260
163,420	4	325	325
122,570	3	435	435
81,710	2	655	655
40,850	1	1,310	1,310

LOAD HOISTING INFORMATION (ROTATION RESISTANT LOAD LINE) 28mm diameter BRIDON ENDURANCE DYFORM 34LR Grade 2160 wire rope			
MAXIMUM LIFTING CAPACITY - LBS.	MINIMUM PARTS OF LINE	MAXIMUM HOISTING DISTANCE - FEET	
		MAIN HOIST	AUX HOIST
477,400 <sup>1</sup>	14	90	90
409,200	12	105	105
375,100	11	115	115
341,000	10	130	130
306,900	9	145	145
272,800	8	160	160
238,700	7	185	185
204,600	6	215	215
170,500	5	260	260
136,400	4	325	325
102,300	3	435	435
68,200	2	655	655
34,100	1	1,310	1,310

1, Lifting any load with 14 parts of main fall load line requires the use of the single sheave crossover hanger block. Refer to the HC285 Operator's Manual for detailed information.



**TEREX**<sup>®</sup>

Model HC285 Crawler Crane - Ratings In Pounds  
92HI Offset Tip Boom (CDAC)  
207,000 Pound Upper Counterweight  
56,000 Pound Carbody Counterweight

**CDAC**

BOOM COMPOSITION CHART - 92HI OFFSET TIP (CDAC)						
BOOM LENGTH (FEET)	BOOM SECTIONS					
	25' 92HI INNER	15' 92HT CENTER	20' 92HT CENTER	10' 92ST CENTER	50' 92ST CENTER	40' 92H OUTER
65	1	0	0	0	0	1
80	1	1	0	0	0	1
90	1	1	0	1	0	1
100	1	1	1	0	0	1
110	1	1	1	1	0	1
120	1	1	1	2	0	1
130	1	1	0	0	1	1
140	1	1	0	1	1	1
150	1	1	1	0	1	1
160	1	1	1	1	1	1
170	1	1	1	2	1	1
180	1	1	0	0	2	1
190	1	1	0	1	2	1
200	1	1	1	0	2	1
210	1	1	1	1	2	1
220	1	1	1	2	2	1
230	1	1	0	0	3	1
240	1	1	0	1	3	1
250	1	1	1	0	3	1
260	1	1	1	1	3	1
270	1	1	1	2	3	1
280	1	1	0	0	4	1
290	1	1	0	1	4	1
300	1	1	1	0	4	1



Model HC285 Crawler Crane - Ratings In Pounds  
 92HI Offset Tip Boom (CDAC)  
 #16HL Jib  
 207,000 Pound Upper Counterweight  
 56,000 Pound Carbody Counterweight

CDAC

BOOM AND JIB LENGTH	JIB RADIUS (FEET)	5.0 DEG OFFSET		15.0 DEG OFFSET		25.0 DEG OFFSET	
		BOOM ANGLE	RATING (POUNDS)	BOOM ANGLE	RATING (POUNDS)	BOOM ANGLE	RATING (POUNDS)
40' JIB & 100' BOOM	29	81.8	32,000 *				
	30	81.4	32,000 *				
	35	79.3	32,000 *				
	40	77.2	32,000 *	80.0	32,000 *		
	50	73.0	32,000 *	75.7	32,000 *	78.2	30,760 *
	60	68.7	32,000 *	71.4	32,000 *	73.8	27,580 *
	70	64.3	32,000 *	66.9	32,000 *	69.3	24,990 *
	80	59.6	32,000 *	62.2	29,550 *	64.5	22,930 *
	90	54.8	31,840 *	57.3	26,770 *	59.5	21,280 *
	100	49.5	28,730 *	52.0	24,590 *	54.1	19,930 *
40' JIB & 110' BOOM	30	81.9	32,000 *				
	35	80.0	32,000 *				
	40	78.1	32,000 *	80.6	32,000 *		
	50	74.2	32,000 *	76.7	32,000 *	79.1	31,420 *
	60	70.2	32,000 *	72.7	32,000 *	75.0	28,230 *
	70	66.1	32,000 *	68.6	32,000 *	70.8	25,740 *
	80	61.9	32,000 *	64.3	30,880 *	66.5	23,680 *
	90	57.4	32,000 *	59.8	28,090 *	61.9	21,920 *
	100	52.7	30,530 *	55.1	25,710 *	57.1	20,530 *
	110	47.7	27,830 *	50.0	23,820 *	51.9	19,440 *
40' JIB & 120' BOOM	32	81.7	32,000 *				
	35	80.6	32,000 *				
	40	78.8	32,000 *	81.2	32,000 *		
	50	75.2	32,000 *	77.6	32,000 *	79.8	32,000 *
	60	71.5	32,000 *	73.8	32,000 *	76.0	28,880 *
	70	67.7	32,000 *	70.0	32,000 *	72.1	26,360 *
	80	63.7	32,000 *	66.0	32,000 *	68.1	24,330 *
	90	59.7	32,000 *	61.9	29,320 *	63.9	22,610 *
	100	55.4	32,000 *	57.6	26,880 *	59.6	21,220 *
	110	50.9	29,470 *	53.1	24,860 *	55.0	19,980 *
40' JIB & 130' BOOM	33	81.9	32,000 *				
	35	81.2	32,000 *				
	40	79.5	32,000 *	81.7	32,000 *		
	50	76.1	32,000 *	78.3	32,000 *	80.4	32,000 *
	60	72.6	32,000 *	74.8	32,000 *	76.9	29,500 *
	70	69.0	32,000 *	71.2	32,000 *	73.2	27,050 *
	80	65.4	32,000 *	67.6	32,000 *	69.5	24,930 *
	90	61.6	32,000 *	63.8	30,530 *	65.7	23,230 *
	100	57.7	32,000 *	59.8	27,980 *	61.7	21,790 *
	110	53.6	30,980 *	55.7	25,970 *	57.5	20,540 *
120	49.3	28,510 *	51.3	24,160 *	53.0	19,530 *	
130	44.7	26,470 *	46.6	22,730 *	48.2	18,710 *	



Model HC285 Crawler Crane - Ratings In Pounds  
 92HI Offset Tip Boom (CDAC)  
 #16HL Jib  
 207,000 Pound Upper Counterweight  
 56,000 Pound Carbody Counterweight

CDAC

BOOM AND JIB LENGTH	JIB RADIUS (FEET)	5.0 DEG OFFSET		15.0 DEG OFFSET		25.0 DEG OFFSET	
		BOOM ANGLE	RATING (POUNDS)	BOOM ANGLE	RATING (POUNDS)	BOOM ANGLE	RATING (POUNDS)
40' JIB & 140' BOOM	35	81.7	32,000 *				
	40	80.1	32,000 *				
	50	76.9	32,000 *	79.0	32,000 *	80.9	32,000 *
	60	73.6	32,000 *	75.7	32,000 *	77.6	30,130 *
	70	70.3	32,000 *	72.3	32,000 *	74.2	27,600 *
	80	66.8	32,000 *	68.9	32,000 *	70.8	25,600 *
	90	63.3	32,000 *	65.4	31,670 *	67.2	23,800 *
	100	59.7	32,000 *	61.7	29,090 *	63.5	22,380 *
	110	56.0	32,000 *	57.9	26,930 *	59.6	21,110 *
	120	52.0	30,010 *	53.9	25,160 *	55.6	20,090 *
	130	47.8	27,870 *	49.7	23,620 *	51.3	19,220 *
140	43.3	25,970 *	45.2	22,310 *	46.6	18,430 *	
40' JIB & 150' BOOM	36	81.8	32,000 *				
	40	80.6	32,000 *				
	50	77.6	32,000 *	79.6	32,000 *	81.4	32,000 *
	60	74.5	32,000 *	76.4	32,000 *	78.3	30,600 *
	70	71.3	32,000 *	73.3	32,000 *	75.1	28,110 *
	80	68.1	32,000 *	70.1	32,000 *	71.8	26,080 *
	90	64.8	32,000 *	66.8	32,000 *	68.5	24,370 *
	100	61.5	32,000 *	63.4	30,070 *	65.1	22,870 *
	110	58.0	32,000 *	59.8	27,880 *	61.5	21,620 *
	120	54.3	31,350 *	56.2	26,120 *	57.8	20,540 *
	130	50.5	29,130 *	52.3	24,500 *	53.8	19,630 *
140	46.5	27,190 *	48.2	23,110 *	49.7	18,900 *	
150	42.1	25,550 *	43.8	21,960 *	45.2	18,190 *	
40' JIB & 160' BOOM	37	81.9	32,000 *				
	40	81.1	32,000 *				
	50	78.2	32,000 *	80.1	32,000 *	81.9	32,000 *
	60	75.3	32,000 *	77.1	32,000 *	78.9	31,160 *
	70	72.3	32,000 *	74.2	32,000 *	75.9	28,660 *
	80	69.3	32,000 *	71.1	32,000 *	72.8	26,680 *
	90	66.2	32,000 *	68.0	32,000 *	69.7	24,930 *
	100	63.0	32,000 *	64.8	31,080 *	66.4	23,420 *
	110	59.7	32,000 *	61.5	28,890 *	63.1	22,160 *
	120	56.4	32,000 *	58.1	26,960 *	59.7	21,040 *
	130	52.8	30,370 *	54.6	25,360 *	56.1	20,100 *
140	49.1	28,340 *	50.9	23,960 *	52.3	19,340 *	
150	45.2	26,680 *	46.9	22,740 *	48.2	18,570 *	
160	41.0	25,100 *	42.6	21,660 *	43.8	18,060 *	



Model HC285 Crawler Crane - Ratings In Pounds  
 92HI Offset Tip Boom (CDAC)  
 #16HL Jib  
 207,000 Pound Upper Counterweight  
 56,000 Pound Carbody Counterweight

CDAC

BOOM AND JIB LENGTH	JIB RADIUS (FEET)	5.0 DEG OFFSET		15.0 DEG OFFSET		25.0 DEG OFFSET	
		BOOM ANGLE	RATING (POUNDS)	BOOM ANGLE	RATING (POUNDS)	BOOM ANGLE	RATING (POUNDS)
40' JIB & 170' BOOM	39	81.8	32,000 *				
	40	81.5	32,000 *				
	50	78.8	32,000 *	80.6	32,000 *		
	60	76.0	32,000 *	77.8	32,000 *	79.5	31,560 *
	70	73.2	32,000 *	74.9	32,000 *	76.6	29,150 *
	80	70.3	32,000 *	72.1	32,000 *	73.7	27,080 *
	90	67.4	32,000 *	69.1	32,000 *	70.7	25,360 *
	100	64.4	32,000 *	66.1	32,000 *	67.7	23,890 *
	110	61.3	32,000 *	63.0	29,850 *	64.6	22,610 *
	120	58.2	32,000 *	59.9	27,860 *	61.3	21,560 *
	130	54.9	31,630 *	56.6	26,170 *	58.0	20,590 *
	140	51.5	29,560 *	53.1	24,710 *	54.5	19,700 *
	150	47.9	27,690 *	49.5	23,440 *	50.8	19,020 *
160	44.0	26,160 *	45.6	22,380 *	46.9	18,370 *	
170	39.9	24,780 *	41.5	21,390 *	42.6	17,900 *	
40' JIB & 180' BOOM	40	81.9	32,000 *				
	50	79.3	32,000 *	81.0	32,000 *		
	60	76.6	32,000 *	78.3	32,000 *	79.9	31,910 *
	70	73.9	32,000 *	75.6	32,000 *	77.2	29,630 *
	80	71.2	32,000 *	72.9	32,000 *	74.5	27,610 *
	90	68.5	32,000 *	70.1	32,000 *	71.7	25,840 *
	100	65.6	32,000 *	67.3	32,000 *	68.8	24,420 *
	110	62.7	32,000 *	64.4	30,670 *	65.9	23,100 *
	120	59.8	32,000 *	61.4	28,680 *	62.8	22,020 *
	130	56.7	32,000 *	58.3	26,990 *	59.7	20,950 *
	140	53.5	30,720 *	55.1	25,440 *	56.5	20,140 *
	150	50.2	28,870 *	51.8	24,210 *	53.1	19,390 *
	160	46.7	27,150 *	48.2	23,050 *	49.5	18,770 *
170	43.0	25,740 *	44.5	22,040 *	45.6	18,160 *	
180	39.0	23,650 *	40.4	21,170 *	41.5	17,720 *	
40' JIB & 190' BOOM	41	82.0	32,000 *				
	50	79.7	32,000 *	81.4	32,000 *		
	60	77.2	32,000 *	78.9	32,000 *	80.4	32,000 *
	70	74.7	32,000 *	76.3	32,000 *	77.8	30,020 *
	80	72.1	32,000 *	73.7	32,000 *	75.2	28,070 *
	90	69.4	32,000 *	71.0	32,000 *	72.5	26,290 *
	100	66.8	32,000 *	68.3	32,000 *	69.8	24,860 *
	110	64.0	32,000 *	65.6	31,570 *	67.0	23,590 *
	120	61.2	32,000 *	62.8	29,540 *	64.2	22,410 *
	130	58.3	32,000 *	59.9	27,840 *	61.2	21,410 *
	140	55.3	31,900 *	56.9	26,290 *	58.2	20,500 *
	150	52.2	29,860 *	53.8	24,860 *	55.0	19,770 *
	160	49.0	27,960 *	50.5	23,690 *	51.7	19,060 *
170	45.6	25,350 *	47.1	22,630 *	48.2	18,460 *	
180	42.0	23,040 *	43.4	21,770 *	44.5	18,040 *	
190	38.1	20,990 *	39.4	20,950 *	40.4	17,620 *	





Model HC285 Crawler Crane - Ratings In Pounds  
 92HI Offset Tip Boom (CDAC)  
 #16HL Jib  
 207,000 Pound Upper Counterweight  
 56,000 Pound Carbody Counterweight

CDAC

BOOM AND JIB LENGTH	JIB RADIUS (FEET)	5.0 DEG OFFSET		15.0 DEG OFFSET		25.0 DEG OFFSET	
		BOOM ANGLE	RATING (POUNDS)	BOOM ANGLE	RATING (POUNDS)	BOOM ANGLE	RATING (POUNDS)
40' JIB & 200' BOOM	43	81.8	32,000 *				
	50	80.2	32,000 *	81.8	32,000 *		
	60	77.7	32,000 *	79.3	32,000 *	80.8	32,000 *
	70	75.3	32,000 *	76.9	32,000 *	78.3	30,400 *
	80	72.8	32,000 *	74.4	32,000 *	75.8	28,490 *
	90	70.3	32,000 *	71.9	32,000 *	73.3	26,740 *
	100	67.8	32,000 *	69.3	32,000 *	70.7	25,290 *
	110	65.2	32,000 *	66.7	32,000 *	68.1	23,950 *
	120	62.5	32,000 *	64.0	30,350 *	65.4	22,790 *
	130	59.8	32,000 *	61.3	28,600 *	62.6	21,850 *
	140	57.0	32,000 *	58.5	26,950 *	59.7	20,890 *
	150	54.1	30,340	55.5	25,640 *	56.8	20,120 *
	160	51.1	27,340	52.5	24,320 *	53.7	19,400 *
	170	47.9	24,710	49.3	23,280 *	50.5	18,860 *
	180	44.6	22,410	46.0	22,330 *	47.1	18,290 *
	190	41.0	20,360	42.4	20,370	43.4	17,850 *
200	37.2	18,540	38.5	18,550	39.5	17,520 *	
40' JIB & 210' BOOM	44	81.9	32,000 *				
	50	80.6	32,000 *				
	60	78.2	32,000 *	79.8	32,000 *	81.2	32,000 *
	70	75.9	32,000 *	77.4	32,000 *	78.8	30,830 *
	80	73.5	32,000 *	75.0	32,000 *	76.4	28,880 *
	90	71.1	32,000 *	72.6	32,000 *	74.0	27,140 *
	100	68.7	32,000 *	70.2	32,000 *	71.5	25,660 *
	110	66.2	32,000 *	67.7	32,000 *	69.0	24,380 *
	120	63.7	32,000 *	65.2	31,130 *	66.4	23,170 *
	130	61.1	32,000 *	62.6	29,340 *	63.8	22,210 *
	140	58.5	32,000 *	59.9	27,740 *	61.1	21,250 *
	150	55.7	29,740	57.1	26,270 *	58.3	20,460 *
	160	52.9	26,730	54.3	25,000 *	55.5	19,820 *
	170	50.0	24,100	51.3	23,950 *	52.5	19,110 *
	180	46.9	21,790	48.2	21,800	49.3	18,610 *
	190	43.6	19,750	45.0	19,760	46.0	18,130 *
200	40.2	17,920	41.5	17,930	42.4	17,750 *	
210	36.4	16,290	37.7	16,300	38.5	16,320	



Model HC285 Crawler Crane - Ratings In Pounds  
 92HI Offset Tip Boom (CDAC)  
 #16HL Jib  
 207,000 Pound Upper Counterweight  
 56,000 Pound Carbody Counterweight

CDAC

BOOM AND JIB LENGTH	JIB RADIUS (FEET)	5.0 DEG OFFSET		15.0 DEG OFFSET		25.0 DEG OFFSET	
		BOOM ANGLE	RATING (POUNDS)	BOOM ANGLE	RATING (POUNDS)	BOOM ANGLE	RATING (POUNDS)
40' JIB & 220' BOOM	46	81.8	32,000 *				
	50	80.9	32,000 *				
	60	78.7	32,000 *	80.2	32,000 *	81.5	32,000 *
	70	76.5	32,000 *	77.9	32,000 *	79.3	31,200 *
	80	74.2	32,000 *	75.6	32,000 *	77.0	29,250 *
	90	71.9	32,000 *	73.3	32,000 *	74.6	27,540 *
	100	69.6	32,000 *	71.0	32,000 *	72.3	26,060 *
	110	67.2	32,000 *	68.6	32,000 *	69.9	24,710 *
	120	64.8	32,000 *	66.2	31,910 *	67.4	23,620 *
	130	62.3	32,000 *	63.7	30,100 *	64.9	22,600 *
	140	59.8	32,000 *	61.2	28,450 *	62.4	21,690 *
	150	57.2	29,120	58.6	26,970 *	59.7	20,830 *
	160	54.6	26,110	55.9	25,710 *	57.0	20,150 *
	170	51.8	23,490	53.1	23,490	54.2	19,470 *
	180	48.9	21,180	50.2	21,180	51.3	18,890 *
190	45.9	19,120	47.2	19,130	48.2	18,410 *	
200	42.7	17,300	44.0	17,310	45.0	17,320	
210	39.4	15,660	40.6	15,660	41.5	15,680	
220	35.7	14,190	36.9	14,200	37.7	14,210	
40' JIB & 230' BOOM	47	81.9	32,000 *				
	50	81.3	32,000 *				
	60	79.1	32,000 *	80.5	32,000 *	81.9	32,000 *
	70	77.0	32,000 *	78.4	32,000 *	79.7	31,510 *
	80	74.8	32,000 *	76.2	32,000 *	77.5	29,580 *
	90	72.6	32,000 *	74.0	32,000 *	75.2	27,920 *
	100	70.3	32,000 *	71.7	32,000 *	73.0	26,370 *
	110	68.1	32,000 *	69.4	32,000 *	70.7	25,170 *
	120	65.8	32,000 *	67.1	32,000 *	68.3	23,970 *
	130	63.4	32,000 *	64.8	30,760 *	66.0	22,910 *
	140	61.0	32,000 *	62.4	29,130 *	63.5	21,990 *
	150	58.6	28,770	59.9	27,650 *	61.0	21,220 *
	160	56.1	25,760	57.4	25,770	58.5	20,410 *
	170	53.4	23,140	54.7	23,140	55.8	19,770 *
	180	50.8	20,830	52.0	20,830	53.1	19,180 *
190	47.9	18,780	49.2	18,780	50.2	18,700 *	
200	45.0	16,940	46.2	16,950	47.2	16,960	
210	41.9	15,300	43.1	15,310	44.0	15,330	
220	38.6	13,830	39.8	13,840	40.6	13,850	
230	35.0	12,500	36.1	12,510	36.9	12,530	



Model HC285 Crawler Crane - Ratings In Pounds  
 92HI Offset Tip Boom (CDAC)  
 #16HL Jib  
 207,000 Pound Upper Counterweight  
 56,000 Pound Carbody Counterweight

CDAC

BOOM AND JIB LENGTH	JIB RADIUS (FEET)	5.0 DEG OFFSET		15.0 DEG OFFSET		25.0 DEG OFFSET	
		BOOM ANGLE	RATING (POUNDS)	BOOM ANGLE	RATING (POUNDS)	BOOM ANGLE	RATING (POUNDS)
40' JIB & 240' BOOM	48	82.0	32,000 *				
	50	81.6	32,000 *				
	60	79.5	32,000 *	80.9	32,000 *		
	70	77.4	32,000 *	78.8	32,000 *	80.0	31,860 *
	80	75.3	32,000 *	76.7	32,000 *	77.9	29,860 *
	90	73.2	32,000 *	74.6	32,000 *	75.8	28,210 *
	100	71.1	32,000 *	72.4	32,000 *	73.6	26,740 *
	110	68.9	32,000 *	70.2	32,000 *	71.4	25,450 *
	120	66.7	32,000 *	68.0	32,000 *	69.2	24,290 *
	130	64.4	32,000 *	65.7	31,460 *	66.9	23,320 *
	140	62.2	31,660	63.4	29,840 *	64.6	22,330 *
	150	59.8	28,190	61.1	28,190	62.2	21,530 *
	160	57.4	25,180	58.7	25,180	59.8	20,800 *
	170	55.0	22,550	56.2	22,560	57.3	20,060 *
	180	52.4	20,240	53.6	20,240	54.7	19,450 *
	190	49.8	18,170	51.0	18,180	52.0	18,190
	200	47.0	16,350	48.2	16,350	49.2	16,370
	210	44.1	14,700	45.3	14,710	46.2	14,730
	220	41.1	13,230	42.3	13,230	43.1	13,250
	230	37.9	11,890	39.0	11,900	39.8	11,920
240	34.3	10,690	35.4	10,700	36.1	10,720	
40' JIB & 250' BOOM	50	81.9	32,000 *				
	60	79.9	32,000 *	81.2	32,000 *		
	70	77.9	32,000 *	79.2	32,000 *	80.4	32,000 *
	80	75.8	32,000 *	77.1	32,000 *	78.4	30,200 *
	90	73.8	32,000 *	75.1	32,000 *	76.3	28,580 *
	100	71.7	32,000 *	73.0	32,000 *	74.2	27,100 *
	110	69.7	32,000 *	70.9	32,000 *	72.1	25,790 *
	120	67.5	32,000 *	68.8	32,000 *	69.9	24,650 *
	130	65.4	32,000 *	66.6	32,000 *	67.8	23,580 *
	140	63.2	31,060	64.4	30,430 *	65.5	22,640 *
	150	61.0	27,580	62.2	27,590	63.3	21,800 *
	160	58.7	24,570	59.9	24,580	61.0	21,050 *
	170	56.3	21,930	57.5	21,940	58.6	20,440 *
	180	53.9	19,620	55.1	19,620	56.1	19,630
	190	51.4	17,560	52.6	17,570	53.6	17,580
	200	48.8	15,730	50.0	15,740	51.0	15,750
	210	46.2	14,090	47.3	14,090	48.2	14,110
	220	43.3	12,610	44.5	12,610	45.3	12,630
	230	40.3	11,270	41.5	11,280	42.3	11,290
	240	37.2	10,060	38.2	10,070	39.0	10,080
250	33.7	8,960	34.8	8,970	35.4	8,980	



Model HC285 Crawler Crane - Ratings In Pounds  
 92HI Offset Tip Boom (CDAC)  
 #16HL Jib  
 207,000 Pound Upper Counterweight  
 56,000 Pound Carbody Counterweight

CDAC

BOOM AND JIB LENGTH	JIB RADIUS (FEET)	5.0 DEG OFFSET		15.0 DEG OFFSET		25.0 DEG OFFSET	
		BOOM ANGLE	RATING (POUNDS)	BOOM ANGLE	RATING (POUNDS)	BOOM ANGLE	RATING (POUNDS)
40' JIB & 260' BOOM	51	81.9	32,000 *				
	60	80.2	32,000 *	81.5	32,000 *		
	70	78.3	32,000 *	79.5	32,000 *	80.7	32,000 *
	80	76.3	32,000 *	77.6	32,000 *	78.8	30,500 *
	90	74.4	32,000 *	75.6	32,000 *	76.8	28,900 *
	100	72.4	32,000 *	73.6	32,000 *	74.8	27,430 *
	110	70.4	32,000 *	71.6	32,000 *	72.7	26,180 *
	120	68.3	32,000 *	69.6	32,000 *	70.7	24,990 *
	130	66.3	32,000 *	67.5	32,000 *	68.6	23,970 *
	140	64.2	30,470	65.4	30,470	66.4	22,980 *
	150	62.0	26,980	63.2	26,990	64.3	22,110 *
	160	59.8	23,970	61.0	23,970	62.1	21,420 *
	170	57.6	21,340	58.8	21,340	59.8	20,710 *
	180	55.3	19,020	56.5	19,020	57.5	19,040
	190	52.9	16,960	54.1	16,970	55.1	16,980
	200	50.5	15,130	51.6	15,140	52.6	15,150
	210	48.0	13,480	49.1	13,490	50.0	13,500
	220	45.3	12,000	46.4	12,000	47.3	12,020
	230	42.6	10,660	43.6	10,660	44.5	10,680
	240	39.6	9,440	40.7	9,450	41.5	9,470
250	36.5	8,330	37.5	8,340	38.3	8,360	
260	33.1	7,320	34.1	7,330	34.8	7,350	
40' JIB & 270' BOOM	53	81.8	32,000 *				
	60	80.5	32,000 *	81.8	32,000 *		
	70	78.7	32,000 *	79.9	32,000 *	81.0	32,000 *
	80	76.8	32,000 *	78.0	32,000 *	79.1	30,750 *
	90	74.9	32,000 *	76.1	32,000 *	77.2	29,190 *
	100	73.0	32,000 *	74.2	32,000 *	75.3	27,700 *
	110	71.0	32,000 *	72.2	32,000 *	73.3	26,490 *
	120	69.1	32,000 *	70.2	32,000 *	71.3	25,340 *
	130	67.1	32,000 *	68.3	32,000 *	69.3	24,270 *
	140	65.0	29,870	66.2	29,880	67.3	23,340 *
	150	63.0	26,390	64.2	26,390	65.2	22,420 *
	160	60.9	23,370	62.1	23,380	63.1	21,700 *
	170	58.8	20,730	59.9	20,740	60.9	20,750
	180	56.6	18,410	57.7	18,420	58.7	18,430
	190	54.3	16,350	55.4	16,360	56.4	16,370
	200	52.0	14,520	53.1	14,530	54.0	14,540
	210	49.6	12,870	50.7	12,880	51.6	12,890
	220	47.1	11,390	48.2	11,400	49.1	11,410
	230	44.5	10,040	45.6	10,050	46.4	10,060
	240	41.8	8,820	42.9	8,830	43.7	8,840
250	39.0	7,710	40.0	7,710	40.7	7,730	
260	35.9	6,700	36.9	6,710	37.6	6,720	
270	32.6	5,770	33.5	5,780	34.1	5,800	



Model HC285 Crawler Crane - Ratings In Pounds  
 92HI Offset Tip Boom (CDAC)  
 #16HL Jib  
 207,000 Pound Upper Counterweight  
 56,000 Pound Carbody Counterweight

CDAC

BOOM AND JIB LENGTH	JIB RADIUS (FEET)	5.0 DEG OFFSET		15.0 DEG OFFSET		25.0 DEG OFFSET	
		BOOM ANGLE	RATING (POUNDS)	BOOM ANGLE	RATING (POUNDS)	BOOM ANGLE	RATING (POUNDS)
40'	54	81.9	32,000 *				
JIB	60	80.8	32,000 *				
&	70	79.0	32,000 *	80.2	32,000 *	81.3	32,000 *
280'	80	77.2	32,000 *	78.4	32,000 *	79.5	31,020 *
BOOM	90	75.4	32,000 *	76.5	32,000 *	77.6	29,410 *
	100	73.5	32,000 *	74.7	32,000 *	75.7	28,090 *
	110	71.6	32,000 *	72.8	32,000 *	73.9	26,790 *
	120	69.7	32,000 *	70.9	32,000 *	71.9	25,580 *
	130	67.8	32,000 *	69.0	32,000 *	70.0	24,560 *
	140	65.9	29,480	67.0	29,490	68.0	23,590 *
	150	63.9	26,000	65.0	26,000	66.0	22,740 *
	160	61.9	22,980	63.0	22,990	64.0	21,980 *
	170	59.8	20,350	61.0	20,350	61.9	20,360
	180	57.7	18,030	58.9	18,030	59.8	18,040
	190	55.6	15,980	56.7	15,980	57.6	16,000
	200	53.4	14,130	54.5	14,140	55.4	14,150
	210	51.1	12,490	52.2	12,490	53.1	12,510
	220	48.8	11,000	49.8	11,010	50.7	11,020
	230	46.3	9,650	47.4	9,660	48.2	9,670
	240	43.8	8,430	44.8	8,440	45.6	8,450
	250	41.1	7,320	42.1	7,330	42.9	7,350
	260	38.3	6,300	39.3	6,310	40.0	6,320
	270	35.3	5,370	36.3	5,380	36.9	5,400
	280	32.0	4,530	33.0	4,540	33.5	4,550



Model HC285 Crawler Crane - Ratings In Pounds  
 92HI Offset Tip Boom (CDAC)  
 #16HL Jib  
 207,000 Pound Upper Counterweight  
 56,000 Pound Carbody Counterweight

CDAC

BOOM AND JIB LENGTH	JIB RADIUS (FEET)	5.0 DEG OFFSET		15.0 DEG OFFSET		25.0 DEG OFFSET	
		BOOM ANGLE	RATING (POUNDS)	BOOM ANGLE	RATING (POUNDS)	BOOM ANGLE	RATING (POUNDS)
50' JIB & 130' BOOM	35	82.0	32,000 *				
	40	80.4	32,000 *				
	50	77.1	31,480 *	79.8	29,020 *		
	60	73.9	30,340 *	76.5	28,100 *	78.9	25,190 *
	70	70.5	29,290 *	73.1	27,300 *	75.5	23,020 *
	80	67.1	28,280 *	69.7	26,580 *	72.1	21,240 *
	90	63.6	27,410 *	66.2	25,900 *	68.5	19,760 *
	100	60.0	26,690 *	62.5	23,770 *	64.8	18,510 *
	110	56.2	25,980 *	58.7	22,020 *	60.9	17,420 *
	120	52.3	24,550 *	54.7	20,510 *	56.8	16,530 *
	130	48.1	22,840 *	50.5	19,260 *	52.5	15,730 *
50' JIB & 140' BOOM	37	81.8	32,000 *				
	40	80.9	32,000 *				
	50	77.8	31,700 *	80.3	29,070 *		
	60	74.7	30,560 *	77.2	28,200 *	79.6	25,620 *
	70	71.6	29,530 *	74.1	27,440 *	76.4	23,430 *
	80	68.4	28,640 *	70.8	26,720 *	73.1	21,710 *
	90	65.1	27,730 *	67.5	26,110 *	69.7	20,180 *
	100	61.7	26,990 *	64.1	24,650 *	66.3	18,930 *
	110	58.2	26,380 *	60.6	22,760 *	62.7	17,850 *
	120	54.6	25,740 *	56.9	21,280 *	59.0	16,940 *
	130	50.8	23,920 *	53.1	19,990 *	55.0	16,140 *
	140	46.7	22,310 *	49.0	18,860 *	50.8	15,450 *
50' JIB & 150' BOOM	38	81.9	32,000 *				
	40	81.3	32,000 *				
	50	78.4	31,790 *	80.8	29,160 *		
	60	75.5	30,690 *	77.9	28,310 *	80.1	25,980 *
	70	72.5	29,710 *	74.9	27,570 *	77.1	23,810 *
	80	69.5	28,840 *	71.8	26,920 *	74.0	22,050 *
	90	66.4	27,990 *	68.7	26,250 *	70.8	20,630 *
	100	63.3	27,330 *	65.5	25,420 *	67.6	19,380 *
	110	60.0	26,590 *	62.3	23,570 *	64.3	18,240 *
	120	56.6	25,980 *	58.8	22,000 *	60.8	17,290 *
	130	53.1	24,920 *	55.3	20,630 *	57.2	16,500 *
	140	49.4	23,240 *	51.5	19,440 *	53.4	15,830 *
	150	45.4	21,780 *	47.6	18,460 *	49.3	15,240 *



Model HC285 Crawler Crane - Ratings In Pounds  
 92HI Offset Tip Boom (CDAC)  
 #16HL Jib  
 207,000 Pound Upper Counterweight  
 56,000 Pound Carbody Counterweight

CDAC

BOOM AND JIB LENGTH	JIB RADIUS (FEET)	5.0 DEG OFFSET		15.0 DEG OFFSET		25.0 DEG OFFSET	
		BOOM ANGLE	RATING (POUNDS)	BOOM ANGLE	RATING (POUNDS)	BOOM ANGLE	RATING (POUNDS)
50' JIB & 160' BOOM	40	81.7	32,000 *				
	50	79.0	32,000 *	81.3	29,180 *		
	60	76.2	30,920 *	78.5	28,450 *	80.6	26,290 *
	70	73.4	29,910 *	75.6	27,760 *	77.7	24,230 *
	80	70.5	29,030 *	72.7	27,100 *	74.8	22,490 *
	90	67.6	28,240 *	69.8	26,470 *	71.8	21,040 *
	100	64.6	27,570 *	66.8	25,940 *	68.8	19,740 *
	110	61.6	26,850 *	63.7	24,320 *	65.7	18,680 *
	120	58.4	26,250 *	60.5	22,740 *	62.4	17,710 *
	130	55.1	25,670 *	57.2	21,290 *	59.1	16,900 *
	140	51.7	24,210 *	53.8	20,130 *	55.5	16,130 *
150	48.1	22,760 *	50.1	19,050 *	51.8	15,550 *	
160	44.3	21,380 *	46.3	18,120 *	47.9	14,990 *	
50' JIB & 170' BOOM	41	81.9	32,000 *				
	50	79.5	32,000 *	81.7	29,220 *		
	60	76.8	31,090 *	79.0	28,530 *	81.0	26,530 *
	70	74.2	30,190 *	76.3	27,820 *	78.3	24,600 *
	80	71.4	29,260 *	73.6	27,210 *	75.5	22,800 *
	90	68.7	28,530 *	70.8	26,540 *	72.7	21,390 *
	100	65.9	27,790 *	67.9	26,020 *	69.8	20,090 *
	110	63.0	27,110 *	65.0	25,050 *	66.9	19,020 *
	120	60.0	26,530 *	62.0	23,330 *	63.9	18,050 *
	130	56.9	25,930 *	59.0	21,960 *	60.7	17,230 *
	140	53.7	25,170 *	55.7	20,700 *	57.5	16,480 *
150	50.4	23,640 *	52.4	19,630 *	54.0	15,830 *	
160	46.9	22,200 *	48.9	18,710 *	50.4	15,290 *	
170	43.2	21,030 *	45.1	17,840 *	46.6	14,820 *	
50' JIB & 180' BOOM	42	82.0	32,000 *				
	50	80.0	32,000 *				
	60	77.4	31,210 *	79.5	28,590 *	81.4	26,520 *
	70	74.9	30,280 *	76.9	27,920 *	78.8	24,900 *
	80	72.3	29,510 *	74.3	27,320 *	76.2	23,160 *
	90	69.6	28,640 *	71.7	26,670 *	73.5	21,700 *
	100	67.0	28,010 *	69.0	26,210 *	70.8	20,470 *
	110	64.2	27,390 *	66.2	25,670 *	68.0	19,390 *
	120	61.4	26,780 *	63.4	24,060 *	65.1	18,420 *
	130	58.5	26,150 *	60.5	22,600 *	62.2	17,570 *
	140	55.6	25,700 *	57.5	21,360 *	59.1	16,840 *
150	52.5	24,510 *	54.4	20,200 *	56.0	16,150 *	
160	49.2	23,100 *	51.1	19,280 *	52.7	15,600 *	
170	45.8	21,860 *	47.7	18,400 *	49.1	15,080 *	
180	42.2	20,710 *	44.0	17,640 *	45.4	14,710 *	



CDAC

BOOM AND JIB LENGTH	JIB RADIUS (FEET)	5.0 DEG OFFSET		15.0 DEG OFFSET		25.0 DEG OFFSET	
		BOOM ANGLE	RATING (POUNDS)	BOOM ANGLE	RATING (POUNDS)	BOOM ANGLE	RATING (POUNDS)
50' JIB & 190' BOOM	44	81.8	32,000 *				
	50	80.4	32,000 *				
	60	78.0	31,350 *	79.9	28,640 *	81.8	26,510 *
	70	75.5	30,430 *	77.5	27,960 *	79.3	25,180 *
	80	73.0	29,620 *	75.0	27,420 *	76.8	23,490 *
	90	70.5	28,860 *	72.5	26,820 *	74.3	22,040 *
	100	68.0	28,210 *	69.9	26,280 *	71.7	20,830 *
	110	65.4	27,510 *	67.3	25,790 *	69.0	19,730 *
	120	62.7	26,950 *	64.6	24,690 *	66.3	18,750 *
	130	60.0	26,440 *	61.9	23,240 *	63.5	17,880 *
	140	57.2	25,850 *	59.0	21,910 *	60.7	17,150 *
	150	54.3	25,420 *	56.1	20,770 *	57.7	16,480 *
	160	51.3	23,930 *	53.1	19,790 *	54.6	15,850 *
	170	48.1	22,630 *	49.9	18,860 *	51.4	15,330 *
	180	44.8	21,410 *	46.5	18,110 *	47.9	14,900 *
190	41.2	20,420 *	43.0	17,390 *	44.3	14,520 *	
50' JIB & 200' BOOM	45	81.9	32,000 *				
	50	80.8	32,000 *				
	60	78.4	31,490 *	80.3	28,620 *		
	70	76.1	30,660 *	78.0	28,040 *	79.8	25,410 *
	80	73.7	29,830 *	75.6	27,430 *	77.4	23,820 *
	90	71.3	29,100 *	73.2	26,930 *	74.9	22,400 *
	100	68.9	28,350 *	70.8	26,440 *	72.4	21,150 *
	110	66.4	27,710 *	68.3	25,880 *	69.9	19,990 *
	120	63.9	27,210 *	65.7	25,340 *	67.4	19,060 *
	130	61.3	26,600 *	63.1	23,770 *	64.7	18,160 *
	140	58.7	26,080 *	60.4	22,440 *	62.0	17,400 *
	150	55.9	25,610 *	57.7	21,320 *	59.2	16,720 *
	160	53.1	24,770 *	54.8	20,270 *	56.3	16,160 *
	170	50.2	23,380 *	51.9	19,360 *	53.3	15,640 *
	180	47.1	22,170 *	48.8	18,550 *	50.2	15,180 *
190	43.8	20,730 *	45.5	17,820 *	46.8	14,760 *	
200	40.4	18,900 *	42.0	17,200 *	43.2	14,410 *	





Model HC285 Crawler Crane - Ratings In Pounds  
 92HI Offset Tip Boom (CDAC)  
 #16HL Jib  
 207,000 Pound Upper Counterweight  
 56,000 Pound Carbody Counterweight

CDAC

BOOM AND JIB LENGTH	JIB RADIUS (FEET)	5.0 DEG OFFSET		15.0 DEG OFFSET		25.0 DEG OFFSET	
		BOOM ANGLE	RATING (POUNDS)	BOOM ANGLE	RATING (POUNDS)	BOOM ANGLE	RATING (POUNDS)
50' JIB & 210' BOOM	47	81.8	32,000 *				
	50	81.1	32,000 *				
	60	78.9	31,550 *	80.7	28,750 *		
	70	76.6	30,730 *	78.5	28,120 *	80.2	25,720 *
	80	74.4	29,900 *	76.2	27,540 *	77.9	24,030 *
	90	72.1	29,190 *	73.9	26,960 *	75.5	22,630 *
	100	69.7	28,580 *	71.5	26,460 *	73.2	21,400 *
	110	67.4	27,870 *	69.2	26,060 *	70.8	20,330 *
	120	65.0	27,330 *	66.7	25,580 *	68.3	19,350 *
	130	62.5	26,790 *	64.3	24,440 *	65.8	18,440 *
	140	60.0	26,340 *	61.7	23,090 *	63.2	17,750 *
	150	57.4	25,830 *	59.1	21,870 *	60.6	17,060 *
	160	54.7	25,410 *	56.4	20,820 *	57.9	16,400 *
	170	52.0	24,170 *	53.7	19,910 *	55.1	15,860 *
180	49.1	22,160	50.8	19,060 *	52.1	15,410 *	
190	46.1	20,110	47.7	18,320 *	49.0	14,990 *	
200	42.9	18,280	44.5	17,620 *	45.7	14,590 *	
210	39.5	16,650	41.1	16,660	42.2	14,320 *	
50' JIB & 220' BOOM	48	81.9	32,000 *				
	50	81.4	32,000 *				
	60	79.3	31,640 *	81.1	28,710 *		
	70	77.1	30,800 *	78.9	28,120 *	80.5	26,000 *
	80	75.0	30,060 *	76.7	27,550 *	78.3	24,320 *
	90	72.8	29,420 *	74.5	27,060 *	76.1	22,940 *
	100	70.5	28,670 *	72.3	26,570 *	73.8	21,730 *
	110	68.3	28,130 *	70.0	26,110 *	71.5	20,630 *
	120	66.0	27,570 *	67.7	25,670 *	69.2	19,610 *
	130	63.6	26,930 *	65.3	25,030 *	66.8	18,790 *
	140	61.2	26,490 *	62.9	23,570 *	64.4	17,990 *
	150	58.8	26,010 *	60.4	22,440 *	61.9	17,290 *
	160	56.2	25,580 *	57.9	21,290 *	59.3	16,690 *
	170	53.6	23,860	55.2	20,390 *	56.6	16,120 *
180	50.9	21,550	52.5	19,470 *	53.9	15,670 *	
190	48.1	19,490	49.7	18,720 *	51.0	15,200 *	
200	45.2	17,660	46.7	17,670	48.0	14,790 *	
210	42.1	16,020	43.6	16,030	44.8	14,470 *	
220	38.8	14,550	40.2	14,560	41.3	14,210 *	



Model HC285 Crawler Crane - Ratings In Pounds  
 92HI Offset Tip Boom (CDAC)  
 #16HL Jib  
 207,000 Pound Upper Counterweight  
 56,000 Pound Carbody Counterweight

CDAC

BOOM AND JIB LENGTH	JIB RADIUS (FEET)	5.0 DEG OFFSET		15.0 DEG OFFSET		25.0 DEG OFFSET	
		BOOM ANGLE	RATING (POUNDS)	BOOM ANGLE	RATING (POUNDS)	BOOM ANGLE	RATING (POUNDS)
50' JIB & 230' BOOM	49	82.0	32,000 *				
	50	81.8	32,000 *				
	60	79.7	31,710 *	81.4	28,700 *		
	70	77.6	30,870 *	79.3	28,100 *	80.9	26,020 *
	80	75.5	30,130 *	77.2	27,610 *	78.8	24,560 *
	90	73.4	29,410 *	75.1	27,130 *	76.6	23,200 *
	100	71.2	28,840 *	72.9	26,650 *	74.4	21,940 *
	110	69.1	28,230 *	70.7	26,160 *	72.2	20,890 *
	120	66.9	27,630 *	68.5	25,730 *	70.0	19,930 *
	130	64.6	27,170 *	66.3	25,410 *	67.7	19,040 *
	140	62.3	26,570 *	64.0	24,120 *	65.4	18,270 *
	150	60.0	26,190 *	61.6	22,890 *	63.0	17,580 *
	160	57.6	25,720 *	59.2	21,790 *	60.6	16,940 *
	170	55.1	23,500	56.7	20,810 *	58.0	16,370 *
	180	52.6	21,190	54.1	19,990 *	55.4	15,900 *
190	49.9	19,130	51.5	19,130 *	52.7	15,400 *	
200	47.2	17,300	48.7	17,310	49.9	14,990 *	
210	44.3	15,660	45.8	15,670	47.0	14,650 *	
220	41.3	14,190	42.7	14,200	43.8	14,210	
230	38.0	12,840	39.4	12,850	40.5	12,870	
50' JIB & 240' BOOM	51	81.8	32,000 *				
	60	80.0	31,690 *	81.7	28,750 *		
	70	78.0	30,980 *	79.7	28,110 *	81.2	26,000 *
	80	76.0	30,280 *	77.6	27,680 *	79.2	24,810 *
	90	74.0	29,600 *	75.6	27,200 *	77.1	23,470 *
	100	71.9	28,930 *	73.5	26,670 *	75.0	22,230 *
	110	69.8	28,320 *	71.4	26,280 *	72.9	21,130 *
	120	67.7	27,770 *	69.3	25,890 *	70.7	20,210 *
	130	65.6	27,240 *	67.1	25,460 *	68.6	19,300 *
	140	63.4	26,730 *	64.9	24,620 *	66.3	18,490 *
	150	61.1	26,310 *	62.7	23,400 *	64.1	17,800 *
	160	58.8	25,530	60.4	22,280 *	61.7	17,150 *
	170	56.5	22,900	58.0	21,260 *	59.3	16,620 *
	180	54.1	20,590	55.6	20,390 *	56.9	16,090 *
	190	51.6	18,530	53.1	18,540	54.3	15,640 *
200	49.0	16,700	50.5	16,710	51.7	15,220 *	
210	46.3	15,060	47.8	15,070	48.9	14,830 *	
220	43.5	13,590	44.9	13,590	46.0	13,610	
230	40.5	12,240	41.9	12,250	43.0	12,270	
240	37.3	11,030	38.7	11,040	39.7	11,060	



Model HC285 Crawler Crane - Ratings In Pounds  
 92HI Offset Tip Boom (CDAC)  
 #16HL Jib  
 207,000 Pound Upper Counterweight  
 56,000 Pound Carbody Counterweight

CDAC

BOOM AND JIB LENGTH	JIB RADIUS (FEET)	5.0 DEG OFFSET		15.0 DEG OFFSET		25.0 DEG OFFSET	
		BOOM ANGLE	RATING (POUNDS)	BOOM ANGLE	RATING (POUNDS)	BOOM ANGLE	RATING (POUNDS)
50' JIB & 250' BOOM	52	81.9	32,000 *				
	60	80.4	31,770 *	82.0	28,690 *		
	70	78.4	31,130 *	80.0	28,150 *	81.5	26,050 *
	80	76.5	30,390 *	78.1	27,730 *	79.5	25,030 *
	90	74.5	29,720 *	76.1	27,170 *	77.5	23,720 *
	100	72.5	29,050 *	74.1	26,740 *	75.5	22,500 *
	110	70.5	28,470 *	72.1	26,350 *	73.5	21,440 *
	120	68.5	27,970 *	70.0	25,890 *	71.4	20,420 *
	130	66.4	27,430 *	68.0	25,530 *	69.3	19,530 *
	140	64.3	26,930 *	65.8	25,170 *	67.2	18,770 *
	150	62.2	26,510 *	63.7	23,890 *	65.0	18,090 *
	160	60.0	24,930 *	61.5	22,760 *	62.8	17,410 *
	170	57.8	22,300 *	59.2	21,730 *	60.5	16,840 *
	180	55.5	19,980 *	56.9	19,990 *	58.2	16,340 *
	190	53.1	17,920 *	54.6	17,930 *	55.8	15,880 *
	200	50.7	16,090 *	52.1	16,100 *	53.3	15,450 *
	210	48.1	14,440 *	49.5	14,450 *	50.7	14,470 *
	220	45.5	12,960 *	46.9	12,970 *	48.0	12,980 *
	230	42.7	11,620 *	44.1	11,630 *	45.1	11,640 *
	240	39.8	10,400 *	41.1	10,410 *	42.1	10,430 *
250	36.7	9,290 *	38.0	9,300 *	38.9	9,320 *	
50' JIB & 260' BOOM	53	82.0	32,000 *				
	60	80.7	31,810 *				
	70	78.8	31,120 *	80.4	28,240 *	81.8	26,030 *
	80	76.9	30,360 *	78.5	27,650 *	79.9	25,240 *
	90	75.0	29,800 *	76.6	27,220 *	78.0	23,940 *
	100	73.1	29,150 *	74.6	26,770 *	76.0	22,700 *
	110	71.2	28,580 *	72.7	26,420 *	74.1	21,630 *
	120	69.2	27,980 *	70.7	25,980 *	72.1	20,660 *
	130	67.2	27,520 *	68.7	25,610 *	70.0	19,830 *
	140	65.2	27,070 *	66.7	25,280 *	68.0	19,030 *
	150	63.2	26,610 *	64.6	24,380 *	65.9	18,320 *
	160	61.1	24,330 *	62.5	23,250 *	63.8	17,690 *
	170	58.9	21,700 *	60.4	21,710 *	61.6	17,040 *
	180	56.7	19,380 *	58.2	19,390 *	59.4	16,520 *
	190	54.5	17,320 *	55.9	17,330 *	57.1	16,040 *
	200	52.2	15,480 *	53.6	15,490 *	54.7	15,500 *
	210	49.8	13,840 *	51.2	13,850 *	52.3	13,860 *
	220	47.3	12,350 *	48.7	12,360 *	49.7	12,380 *
	230	44.7	11,010 *	46.0	11,020 *	47.1	11,030 *
	240	42.0	9,790 *	43.3	9,800 *	44.3	9,820 *
250	39.1	8,680 *	40.4	8,690 *	41.3	8,700 *	
260	36.0	7,670 *	37.3	7,680 *	38.2	7,700 *	



Model HC285 Crawler Crane - Ratings In Pounds  
 92HI Offset Tip Boom (CDAC)  
 #16HL Jib  
 207,000 Pound Upper Counterweight  
 56,000 Pound Carbody Counterweight

CDAC

BOOM AND JIB LENGTH	JIB RADIUS (FEET)	5.0 DEG OFFSET		15.0 DEG OFFSET		25.0 DEG OFFSET	
		BOOM ANGLE	RATING (POUNDS)	BOOM ANGLE	RATING (POUNDS)	BOOM ANGLE	RATING (POUNDS)
50' JIB & 270' BOOM	55	81.9	32,000 *				
	60	81.0	31,880 *				
	70	79.2	31,090 *	80.7	28,170 *		
	80	77.3	30,430 *	78.8	27,670 *	80.2	25,470 *
	90	75.5	29,850 *	77.0	27,220 *	78.4	24,170 *
	100	73.7	29,200 *	75.1	26,840 *	76.5	22,910 *
	110	71.8	28,610 *	73.2	26,440 *	74.6	21,880 *
	120	69.9	28,090 *	71.3	26,030 *	72.7	20,940 *
	130	68.0	27,570 *	69.4	25,680 *	70.7	20,060 *
	140	66.0	27,190 *	67.5	25,290 *	68.7	19,220 *
	150	64.1	26,680 *	65.5	24,880 *	66.7	18,560 *
	160	62.0	23,730 *	63.5	23,730 *	64.7	17,900 *
	170	60.0	21,100 *	61.4	21,100 *	62.6	17,300 *
	180	57.9	18,780 *	59.3	18,780 *	60.5	16,730 *
	190	55.8	16,720 *	57.1	16,720 *	58.3	16,230 *
	200	53.5	14,870 *	54.9	14,880 *	56.1	14,890 *
	210	51.3	13,230 *	52.6	13,240 *	53.7	13,250 *
	220	48.9	11,740 *	50.3	11,750 *	51.3	11,760 *
	230	46.5	10,390 *	47.8	10,400 *	48.9	10,420 *
	240	44.0	9,170 *	45.2	9,180 *	46.2	9,200 *
250	41.3	8,060 *	42.6	8,070 *	43.5	8,090 *	
260	38.5	7,040 *	39.7	7,050 *	40.6	7,070 *	
270	35.4	6,110 *	36.7	6,120 *	37.5	6,150 *	
50' JIB & 280' BOOM	56	82.0	31,980 *				
	60	81.3	31,710 *				
	70	79.5	31,020 *	80.9	28,070 *		
	80	77.7	30,320 *	79.2	27,640 *	80.5	25,490 *
	90	76.0	29,770 *	77.4	27,180 *	78.7	24,350 *
	100	74.2	29,210 *	75.6	26,730 *	76.9	23,190 *
	110	72.4	28,660 *	73.8	26,370 *	75.1	22,100 *
	120	70.5	28,040 *	71.9	25,930 *	73.2	21,120 *
	130	68.7	27,610 *	70.1	25,610 *	71.3	20,290 *
	140	66.8	27,180 *	68.2	25,300 *	69.4	19,490 *
	150	64.9	26,350 *	66.3	24,970 *	67.5	18,720 *
	160	63.0	23,340 *	64.3	23,340 *	65.5	18,110 *
	170	61.0	20,700 *	62.4	20,710 *	63.5	17,490 *
	180	59.0	18,380 *	60.3	18,390 *	61.5	17,000 *
	190	56.9	16,320 *	58.3	16,330 *	59.4	16,340 *
	200	54.8	14,480 *	56.2	14,490 *	57.3	14,510 *
	210	52.7	12,840 *	54.0	12,850 *	55.1	12,860 *
	220	50.4	11,350 *	51.7	11,350 *	52.8	11,370 *
	230	48.1	10,000 *	49.4	10,010 *	50.5	10,020 *
	240	45.7	8,770 *	47.0	8,780 *	48.0	8,800 *
250	43.2	7,660 *	44.5	7,670 *	45.4	7,690 *	
260	40.6	6,650 *	41.8	6,650 *	42.8	6,670 *	
270	37.8	5,700 *	39.0	5,710 *	39.9	5,730 *	
280	34.9	4,850 *	36.0	4,860 *	36.8	4,880 *	



Model HC285 Crawler Crane - Ratings In Pounds  
 92HI Offset Tip Boom (CDAC)  
 #16HL Jib  
 207,000 Pound Upper Counterweight  
 56,000 Pound Carbody Counterweight

CDAC

BOOM AND JIB LENGTH	JIB RADIUS (FEET)	5.0 DEG OFFSET		15.0 DEG OFFSET		25.0 DEG OFFSET	
		BOOM ANGLE	RATING (POUNDS)	BOOM ANGLE	RATING (POUNDS)	BOOM ANGLE	RATING (POUNDS)
60' JIB & 150' BOOM	40	82.0	30,360 *				
	50	79.2	29,110 *	82.0	26,370 *		
	60	76.4	27,960 *	79.2	25,510 *	81.7	22,750 *
	70	73.6	27,010 *	76.3	24,720 *	78.9	20,920 *
	80	70.8	26,080 *	73.4	24,080 *	75.9	19,340 *
	90	67.8	25,180 *	70.5	23,450 *	73.0	17,980 *
	100	64.9	24,420 *	67.5	22,180 *	69.9	16,900 *
	110	61.8	23,790 *	64.4	20,510 *	66.8	15,920 *
	120	58.6	23,090 *	61.2	19,170 *	63.5	15,090 *
	130	55.4	21,880 *	57.9	17,990 *	60.2	14,310 *
	140	51.9	20,320 *	54.5	16,890 *	56.6	13,690 *
150	48.3	19,040 *	50.8	15,990 *	52.9	13,170 *	
60' JIB & 160' BOOM	42	81.8	30,170 *				
	50	79.7	29,220 *				
	60	77.1	28,220 *	79.7	25,580 *		
	70	74.4	27,140 *	77.0	24,870 *	79.4	21,130 *
	80	71.7	26,290 *	74.2	24,170 *	76.6	19,600 *
	90	68.9	25,490 *	71.4	23,580 *	73.8	18,340 *
	100	66.1	24,690 *	68.6	22,810 *	70.9	17,170 *
	110	63.2	24,050 *	65.7	21,160 *	68.0	16,190 *
	120	60.2	23,350 *	62.7	19,750 *	64.9	15,360 *
	130	57.1	22,710 *	59.6	18,490 *	61.8	14,630 *
	140	54.0	21,150 *	56.4	17,400 *	58.5	13,980 *
150	50.6	19,790 *	53.0	16,530 *	55.1	13,410 *	
160	47.1	18,680 *	49.5	15,710 *	51.4	12,920 *	
60' JIB & 170' BOOM	43	81.9	30,080 *				
	50	80.2	29,330 *				
	60	77.6	28,360 *	80.1	25,670 *		
	70	75.1	27,310 *	77.6	24,950 *	79.9	21,390 *
	80	72.5	26,450 *	74.9	24,330 *	77.2	19,920 *
	90	69.9	25,690 *	72.3	23,660 *	74.6	18,630 *
	100	67.2	24,980 *	69.6	23,150 *	71.8	17,510 *
	110	64.4	24,270 *	66.8	21,770 *	69.0	16,520 *
	120	61.6	23,630 *	64.0	20,280 *	66.2	15,630 *
	130	58.8	23,060 *	61.1	19,000 *	63.2	14,930 *
	140	55.8	21,960 *	58.1	17,920 *	60.1	14,220 *
150	52.7	20,580 *	55.0	16,990 *	57.0	13,700 *	
160	49.4	19,370 *	51.7	16,120 *	53.6	13,170 *	
170	46.0	18,280 *	48.3	15,400 *	50.1	12,760 *	



Model HC285 Crawler Crane - Ratings In Pounds  
 92HI Offset Tip Boom (CDAC)  
 #16HL Jib  
 207,000 Pound Upper Counterweight  
 56,000 Pound Carbody Counterweight

CDAC

BOOM AND JIB LENGTH	JIB RADIUS (FEET)	5.0 DEG OFFSET		15.0 DEG OFFSET		25.0 DEG OFFSET	
		BOOM ANGLE	RATING (POUNDS)	BOOM ANGLE	RATING (POUNDS)	BOOM ANGLE	RATING (POUNDS)
60' JIB & 180' BOOM	45	81.8	29,950 *				
	50	80.6	29,400 *				
	60	78.2	28,370 *	80.5	25,740 *		
	70	75.7	27,540 *	78.1	24,970 *	80.3	21,590 *
	80	73.2	26,620 *	75.6	24,400 *	77.8	20,150 *
	90	70.7	25,840 *	73.1	23,780 *	75.2	18,900 *
	100	68.2	25,130 *	70.5	23,250 *	72.6	17,750 *
	110	65.6	24,450 *	67.9	22,300 *	70.0	16,750 *
	120	62.9	23,860 *	65.2	20,860 *	67.3	15,900 *
	130	60.2	23,250 *	62.5	19,550 *	64.5	15,150 *
	140	57.4	22,690 *	59.6	18,400 *	61.6	14,510 *
	150	54.5	21,330 *	56.7	17,480 *	58.6	13,920 *
	160	51.5	20,070 *	53.7	16,630 *	55.5	13,420 *
	170	48.3	18,970 *	50.5	15,820 *	52.3	12,940 *
180	45.0	17,990 *	47.1	15,180 *	48.8	12,550 *	
60' JIB & 190' BOOM	46	81.9	29,880 *				
	50	81.0	29,480 *				
	60	78.6	28,560 *	80.9	25,750 *		
	70	76.3	27,630 *	78.6	25,080 *	80.7	21,850 *
	80	73.9	26,840 *	76.2	24,450 *	78.3	20,350 *
	90	71.5	26,060 *	73.8	23,850 *	75.9	19,130 *
	100	69.1	25,300 *	71.3	23,340 *	73.4	18,040 *
	110	66.6	24,620 *	68.8	22,780 *	70.9	17,020 *
	120	64.1	24,050 *	66.3	21,340 *	68.3	16,170 *
	130	61.5	23,510 *	63.7	20,040 *	65.6	15,450 *
	140	58.9	22,940 *	61.0	18,940 *	62.9	14,750 *
	150	56.1	22,070 *	58.3	17,920 *	60.1	14,170 *
	160	53.3	20,730 *	55.4	17,040 *	57.2	13,660 *
	170	50.3	19,640 *	52.4	16,240 *	54.2	13,200 *
180	47.3	18,620 *	49.3	15,560 *	51.0	12,780 *	
190	44.0	17,700 *	46.0	14,930 *	47.7	12,400 *	



Model HC285 Crawler Crane - Ratings In Pounds  
 92HI Offset Tip Boom (CDAC)  
 #16HL Jib  
 207,000 Pound Upper Counterweight  
 56,000 Pound Carbody Counterweight

CDAC

BOOM AND JIB LENGTH	JIB RADIUS (FEET)	5.0 DEG OFFSET		15.0 DEG OFFSET		25.0 DEG OFFSET	
		BOOM ANGLE	RATING (POUNDS)	BOOM ANGLE	RATING (POUNDS)	BOOM ANGLE	RATING (POUNDS)
60' JIB & 200' BOOM	47	82.0	29,960 *				
	50	81.3	29,660 *				
	60	79.1	28,640 *	81.3	25,770 *		
	70	76.8	27,830 *	79.0	25,180 *	81.1	22,020 *
	80	74.6	26,990 *	76.7	24,510 *	78.8	20,600 *
	90	72.3	26,150 *	74.4	23,980 *	76.4	19,330 *
	100	69.9	25,540 *	72.1	23,500 *	74.1	18,280 *
	110	67.6	24,900 *	69.7	22,970 *	71.7	17,310 *
	120	65.2	24,290 *	67.3	21,880 *	69.2	16,450 *
	130	62.7	23,720 *	64.8	20,560 *	66.7	15,690 *
	140	60.2	23,210 *	62.3	19,370 *	64.1	15,000 *
	150	57.6	22,700 *	59.7	18,400 *	61.5	14,420 *
	160	54.9	21,450 *	57.0	17,460 *	58.7	13,870 *
	170	52.2	20,290 *	54.2	16,640 *	55.9	13,370 *
	180	49.3	19,170 *	51.3	15,930 *	53.0	12,990 *
190	46.3	18,290 *	48.2	15,330 *	49.8	12,610 *	
200	43.1	17,400 *	45.0	14,750 *	46.6	12,290 *	
60' JIB & 210' BOOM	49	81.8	29,760 *				
	50	81.6	29,680 *				
	60	79.5	28,780 *	81.6	25,860 *		
	70	77.3	27,840 *	79.4	25,150 *	81.4	22,250 *
	80	75.1	27,060 *	77.2	24,640 *	79.2	20,840 *
	90	72.9	26,340 *	75.0	24,080 *	77.0	19,570 *
	100	70.7	25,640 *	72.8	23,520 *	74.7	18,460 *
	110	68.4	25,040 *	70.5	23,030 *	72.4	17,520 *
	120	66.1	24,380 *	68.2	22,300 *	70.1	16,690 *
	130	63.8	23,830 *	65.8	20,980 *	67.7	15,900 *
	140	61.4	23,340 *	63.4	19,870 *	65.2	15,220 *
	150	58.9	22,860 *	60.9	18,770 *	62.7	14,630 *
	160	56.4	22,120 *	58.4	17,900 *	60.1	14,070 *
	170	53.8	20,910 *	55.8	17,040 *	57.4	13,570 *
	180	51.1	19,820 *	53.0	16,360 *	54.7	13,140 *
190	48.3	18,850 *	50.2	15,640 *	51.8	12,810 *	
200	45.4	17,960 *	47.2	15,060 *	48.8	12,440 *	
210	42.2	16,990 *	44.1	14,580 *	45.5	12,180 *	



Model HC285 Crawler Crane - Ratings In Pounds  
 92HI Offset Tip Boom (CDAC)  
 #16HL Jib  
 207,000 Pound Upper Counterweight  
 56,000 Pound Carbody Counterweight

CDAC

BOOM AND JIB LENGTH	JIB RADIUS (FEET)	5.0 DEG OFFSET		15.0 DEG OFFSET		25.0 DEG OFFSET	
		BOOM ANGLE	RATING (POUNDS)	BOOM ANGLE	RATING (POUNDS)	BOOM ANGLE	RATING (POUNDS)
60' JIB & 220' BOOM	50	81.9	29,720 *				
	60	79.9	28,820 *	81.9	25,860 *		
	70	77.8	28,040 *	79.8	25,170 *	81.8	22,390 *
	80	75.7	27,210 *	77.7	24,620 *	79.6	21,030 *
	90	73.6	26,510 *	75.6	24,070 *	77.5	19,780 *
	100	71.4	25,820 *	73.4	23,620 *	75.3	18,720 *
	110	69.2	25,160 *	71.2	23,160 *	73.1	17,730 *
	120	67.0	24,550 *	69.0	22,730 *	70.8	16,890 *
	130	64.8	24,060 *	66.8	21,480 *	68.5	16,100 *
	140	62.5	23,550 *	64.5	20,300 *	66.2	15,420 *
	150	60.2	23,030 *	62.1	19,270 *	63.8	14,870 *
	160	57.8	22,550 *	59.7	18,320 *	61.4	14,300 *
	170	55.3	21,580 *	57.2	17,440 *	58.8	13,770 *
	180	52.8	20,400 *	54.6	16,690 *	56.2	13,350 *
	190	50.1	19,390 *	52.0	16,060 *	53.5	12,950 *
200	47.4	18,010 *	49.2	15,400 *	50.7	12,630 *	
210	44.5	16,360 *	46.3	14,900 *	47.7	12,330 *	
220	41.4	14,890 *	43.2	14,430 *	44.6	12,080 *	
60' JIB & 230' BOOM	52	81.8	29,460 *				
	60	80.2	28,820 *				
	70	78.2	28,070 *	80.2	25,220 *		
	80	76.2	27,230 *	78.2	24,680 *	80.0	21,240 *
	90	74.1	26,530 *	76.1	24,130 *	77.9	20,010 *
	100	72.1	25,850 *	74.0	23,640 *	75.8	18,940 *
	110	70.0	25,240 *	71.9	23,170 *	73.7	17,980 *
	120	67.9	24,690 *	69.8	22,780 *	71.5	17,110 *
	130	65.7	24,150 *	67.6	21,950 *	69.4	16,380 *
	140	63.5	23,680 *	65.4	20,700 *	67.1	15,700 *
	150	61.3	23,160 *	63.2	19,690 *	64.8	15,050 *
	160	59.0	22,770 *	60.9	18,660 *	62.5	14,480 *
	170	56.7	22,150 *	58.5	17,860 *	60.1	14,010 *
	180	54.3	21,040 *	56.1	17,040 *	57.6	13,570 *
	190	51.8	19,460 *	53.6	16,400 *	55.1	13,160 *
200	49.2	17,630 *	51.0	15,750 *	52.4	12,780 *	
210	46.5	16,000 *	48.2	15,180 *	49.7	12,470 *	
220	43.7	14,520 *	45.4	14,530 *	46.7	12,170 *	
230	40.7	13,180 *	42.4	13,190 *	43.7	11,940 *	





Model HC285 Crawler Crane - Ratings In Pounds  
 92HI Offset Tip Boom (CDAC)  
 #16HL Jib  
 207,000 Pound Upper Counterweight  
 56,000 Pound Carbody Counterweight

CDAC

BOOM AND JIB LENGTH	JIB RADIUS (FEET)	5.0 DEG OFFSET		15.0 DEG OFFSET		25.0 DEG OFFSET	
		BOOM ANGLE	RATING (POUNDS)	BOOM ANGLE	RATING (POUNDS)	BOOM ANGLE	RATING (POUNDS)
60' JIB & 240' BOOM	53	81.9	29,450 *				
	60	80.5	28,880 *				
	70	78.6	28,110 *	80.5	25,220 *		
	80	76.7	27,350 *	78.6	24,650 *	80.3	21,410 *
	90	74.7	26,650 *	76.6	24,190 *	78.3	20,190 *
	100	72.7	25,990 *	74.6	23,730 *	76.3	19,070 *
	110	70.7	25,420 *	72.6	23,260 *	74.3	18,140 *
	120	68.7	24,900 *	70.5	22,890 *	72.2	17,330 *
	130	66.6	24,280 *	68.4	22,350 *	70.1	16,560 *
	140	64.5	23,830 *	66.3	21,170 *	68.0	15,870 *
	150	62.3	23,360 *	64.2	20,040 *	65.8	15,270 *
	160	60.2	22,860 *	62.0	19,080 *	63.6	14,720 *
	170	57.9	22,510 *	59.7	18,200 *	61.3	14,200 *
	180	55.6	20,930 *	57.4	17,460 *	58.9	13,750 *
	190	53.3	18,870 *	55.0	16,730 *	56.5	13,320 *
	200	50.8	17,040 *	52.6	16,080 *	54.0	12,990 *
	210	48.3	15,390 *	50.0	15,400 *	51.4	12,640 *
220	45.6	13,920 *	47.3	13,930 *	48.7	12,340 *	
230	42.9	12,580 *	44.5	12,590 *	45.8	12,100 *	
240	40.0	11,360 *	41.6	11,370 *	42.8	11,400 *	
60' JIB & 250' BOOM	54	82.0	29,430 *				
	60	80.9	28,950 *				
	70	79.0	28,130 *	80.8	25,220 *		
	80	77.1	27,440 *	78.9	24,740 *	80.7	21,550 *
	90	75.2	26,740 *	77.0	24,200 *	78.7	20,350 *
	100	73.3	26,140 *	75.1	23,780 *	76.8	19,290 *
	110	71.3	25,600 *	73.1	23,340 *	74.8	18,360 *
	120	69.4	25,040 *	71.2	22,900 *	72.8	17,510 *
	130	67.4	24,430 *	69.2	22,540 *	70.8	16,780 *
	140	65.4	23,920 *	67.1	21,510 *	68.7	16,070 *
	150	63.3	23,500 *	65.1	20,490 *	66.6	15,440 *
	160	61.2	23,040 *	63.0	19,460 *	64.5	14,870 *
	170	59.1	22,640 *	60.8	18,550 *	62.3	14,360 *
	180	56.9	20,320 *	58.6	17,810 *	60.1	13,950 *
	190	54.6	18,260 *	56.3	17,050 *	57.8	13,500 *
	200	52.3	16,430 *	54.0	16,410 *	55.4	13,100 *
	210	49.9	14,780 *	51.6	14,790 *	53.0	12,770 *
220	47.4	13,290 *	49.1	13,300 *	50.4	12,460 *	
230	44.9	11,960 *	46.5	11,970 *	47.8	11,990 *	
240	42.1	10,730 *	43.7	10,740 *	45.0	10,760 *	
250	39.3	9,630 *	40.8	9,640 *	42.0	9,660 *	



Model HC285 Crawler Crane - Ratings In Pounds  
 92HI Offset Tip Boom (CDAC)  
 #16HL Jib  
 207,000 Pound Upper Counterweight  
 56,000 Pound Carbody Counterweight

CDAC

BOOM AND JIB LENGTH	JIB RADIUS (FEET)	5.0 DEG OFFSET		15.0 DEG OFFSET		25.0 DEG OFFSET	
		BOOM ANGLE	RATING (POUNDS)	BOOM ANGLE	RATING (POUNDS)	BOOM ANGLE	RATING (POUNDS)
60' JIB & 260' BOOM	56	81.9	29,270 *				
	60	81.1	28,910 *				
	70	79.3	28,170 *	81.1	25,200 *		
	80	77.5	27,490 *	79.3	24,780 *	81.0	21,710 *
	90	75.7	26,850 *	77.4	24,230 *	79.1	20,500 *
	100	73.8	26,240 *	75.6	23,790 *	77.2	19,470 *
	110	71.9	25,600 *	73.7	23,430 *	75.3	18,530 *
	120	70.0	25,100 *	71.8	22,990 *	73.4	17,660 *
	130	68.1	24,530 *	69.9	22,570 *	71.4	16,970 *
	140	66.2	24,070 *	67.9	21,970 *	69.5	16,220 *
	150	64.2	23,590 *	65.9	20,830 *	67.5	15,630 *
	160	62.2	23,190 *	63.9	19,810 *	65.4	15,040 *
	170	60.1	22,040 *	61.8	18,960 *	63.3	14,590 *
	180	58.1	19,720 *	59.7	18,110 *	61.2	14,090 *
	190	55.9	17,660 *	57.6	17,380 *	59.0	13,700 *
	200	53.7	15,820 *	55.3	15,830 *	56.7	13,270 *
	210	51.4	14,180 *	53.1	14,190 *	54.4	12,950 *
	220	49.1	12,690 *	50.7	12,700 *	52.0	12,630 *
	230	46.6	11,340 *	48.2	11,350 *	49.5	11,370 *
	240	44.1	10,120 *	45.7	10,130 *	46.9	10,150 *
250	41.4	9,010 *	43.0	9,020 *	44.1	9,040 *	
260	38.6	7,990 *	40.1	8,000 *	41.2	8,020 *	
60' JIB & 270' BOOM	57	81.9	29,130 *				
	60	81.4	28,970 *				
	70	79.7	28,150 *	81.4	25,200 *		
	80	77.9	27,550 *	79.6	24,670 *	81.2	21,820 *
	90	76.1	26,910 *	77.8	24,270 *	79.4	20,720 *
	100	74.3	26,280 *	76.0	23,810 *	77.6	19,620 *
	110	72.5	25,670 *	74.2	23,450 *	75.8	18,680 *
	120	70.7	25,210 *	72.4	23,030 *	73.9	17,890 *
	130	68.8	24,680 *	70.5	22,640 *	72.0	17,150 *
	140	66.9	24,160 *	68.6	22,250 *	70.1	16,440 *
	150	65.0	23,730 *	66.7	21,200 *	68.2	15,800 *
	160	63.1	23,280 *	64.8	20,220 *	66.2	15,240 *
	170	61.1	21,430 *	62.8	19,280 *	64.2	14,750 *
	180	59.1	19,110 *	60.8	18,480 *	62.2	14,230 *
	190	57.1	17,050 *	58.7	17,060 *	60.1	13,820 *
	200	55.0	15,210 *	56.6	15,220 *	57.9	13,470 *
	210	52.8	13,570 *	54.4	13,580 *	55.7	13,060 *
	220	50.6	12,080 *	52.2	12,090 *	53.5	12,100 *
	230	48.3	10,730 *	49.8	10,740 *	51.1	10,760 *
	240	45.9	9,500 *	47.4	9,510 *	48.6	9,530 *
250	43.4	8,390 *	44.9	8,400 *	46.1	8,420 *	
260	40.8	7,380 *	42.2	7,390 *	43.4	7,410 *	
270	38.0	6,430 *	39.4	6,450 *	40.5	6,470 *	



Model HC285 Crawler Crane - Ratings In Pounds  
 92HI Offset Tip Boom (CDAC)  
 #16HL Jib  
 207,000 Pound Upper Counterweight  
 56,000 Pound Carbody Counterweight

CDAC

BOOM AND JIB LENGTH	JIB RADIUS (FEET)	5.0 DEG OFFSET		15.0 DEG OFFSET		25.0 DEG OFFSET	
		BOOM ANGLE	RATING (POUNDS)	BOOM ANGLE	RATING (POUNDS)	BOOM ANGLE	RATING (POUNDS)
60'	59	81.8	28,830 *				
JIB	60	81.7	28,750 *				
&	70	80.0	28,040 *	81.6	25,070 *		
280'	80	78.2	27,440 *	79.9	24,640 *	81.5	21,980 *
BOOM	90	76.5	26,790 *	78.2	24,200 *	79.8	20,800 *
	100	74.8	26,240 *	76.5	23,790 *	78.0	19,810 *
	110	73.0	25,640 *	74.7	23,340 *	76.2	18,890 *
	120	71.3	25,170 *	72.9	22,980 *	74.4	18,060 *
	130	69.5	24,690 *	71.1	22,640 *	72.6	17,280 *
	140	67.7	24,220 *	69.3	22,240 *	70.8	16,610 *
	150	65.8	23,750 *	67.4	21,580 *	68.9	15,960 *
	160	64.0	23,360 *	65.6	20,540 *	67.0	15,450 *
	170	62.1	21,040	63.7	19,620 *	65.1	14,920 *
	180	60.1	18,720	61.7	18,720	63.1	14,440 *
	190	58.2	16,650	59.7	16,660	61.1	14,010 *
	200	56.2	14,820	57.7	14,820	59.1	13,620 *
	210	54.1	13,170	55.6	13,180	57.0	13,200
	220	52.0	11,680	53.5	11,680	54.8	11,700
	230	49.8	10,340	51.3	10,340	52.5	10,360
	240	47.5	9,110	49.0	9,120	50.2	9,140
	250	45.2	7,990	46.6	8,000	47.8	8,020
	260	42.7	6,960	44.2	6,970	45.3	7,000
	270	40.1	6,030	41.6	6,040	42.6	6,060
	280	37.4	5,170	38.8	5,180	39.8	5,200



Model HC285 Crawler Crane - Ratings In Pounds  
 92HI Offset Tip Boom (CDAC)  
 #16HL Jib  
 207,000 Pound Upper Counterweight  
 56,000 Pound Carbody Counterweight

CDAC

BOOM AND JIB LENGTH	JIB RADIUS (FEET)	5.0 DEG OFFSET		15.0 DEG OFFSET		25.0 DEG OFFSET	
		BOOM ANGLE	RATING (POUNDS)	BOOM ANGLE	RATING (POUNDS)	BOOM ANGLE	RATING (POUNDS)
70' JIB & 180' BOOM	47	81.8	22,290 *				
	50	81.2	22,090 *				
	60	78.8	21,240 *	81.5	18,970 *		
	70	76.5	20,490 *	79.2	18,400 *	81.7	16,750 *
	80	74.1	19,720 *	76.8	17,870 *	79.3	16,340 *
	90	71.7	19,130 *	74.4	17,350 *	76.8	15,870 *
	100	69.3	18,550 *	71.9	16,910 *	74.3	15,430 *
	110	66.8	17,940 *	69.4	16,440 *	71.8	14,630 *
	120	64.3	17,440 *	66.9	15,920 *	69.2	13,840 *
	130	61.7	16,910 *	64.3	15,520 *	66.6	13,200 *
	140	59.0	16,440 *	61.6	15,110 *	63.9	12,590 *
	150	56.3	15,880 *	58.8	14,750 *	61.0	12,070 *
	160	53.5	15,480 *	56.0	14,420 *	58.1	11,580 *
170	50.5	15,070 *	53.0	13,760 *	55.1	11,200 *	
180	47.5	14,690 *	49.9	13,190 *	51.9	10,840 *	
70' JIB & 190' BOOM	48	81.9	22,320 *				
	50	81.5	22,150 *				
	60	79.3	21,340 *	81.8	18,990 *		
	70	77.0	20,590 *	79.6	18,490 *		
	80	74.8	19,850 *	77.3	17,920 *	79.7	16,340 *
	90	72.5	19,240 *	75.0	17,420 *	77.4	15,940 *
	100	70.1	18,680 *	72.6	17,000 *	75.0	15,470 *
	110	67.8	18,070 *	70.3	16,540 *	72.6	14,830 *
	120	65.3	17,620 *	67.8	16,060 *	70.1	14,090 *
	130	62.9	17,090 *	65.4	15,590 *	67.6	13,370 *
	140	60.4	16,680 *	62.8	15,250 *	65.0	12,820 *
	150	57.8	16,120 *	60.2	14,840 *	62.4	12,260 *
	160	55.1	15,670 *	57.5	14,510 *	59.6	11,770 *
170	52.4	15,280 *	54.7	14,140 *	56.8	11,360 *	
180	49.5	14,900 *	51.8	13,510 *	53.8	10,990 *	
190	46.5	14,510 *	48.8	12,980 *	50.7	10,660 *	
70' JIB & 200' BOOM	50	81.8	22,190 *				
	60	79.7	21,390 *				
	70	77.5	20,680 *	80.0	18,470 *		
	80	75.3	20,040 *	77.8	17,960 *	80.1	16,410 *
	90	73.1	19,350 *	75.6	17,540 *	77.9	15,930 *
	100	70.9	18,820 *	73.3	17,070 *	75.6	15,560 *
	110	68.6	18,280 *	71.0	16,640 *	73.3	15,010 *
	120	66.3	17,770 *	68.7	16,210 *	70.9	14,300 *
	130	64.0	17,280 *	66.4	15,730 *	68.5	13,570 *
	140	61.6	16,860 *	63.9	15,370 *	66.1	12,970 *
	150	59.1	16,360 *	61.5	14,990 *	63.6	12,450 *
	160	56.6	15,910 *	58.9	14,650 *	61.0	11,960 *
	170	54.0	15,480 *	56.3	14,390 *	58.3	11,560 *
180	51.3	15,090 *	53.6	13,850 *	55.5	11,170 *	
190	48.5	14,730 *	50.7	13,270 *	52.6	10,810 *	
200	45.5	14,390 *	47.7	12,780 *	49.6	10,510 *	



Model HC285 Crawler Crane - Ratings In Pounds  
 92HI Offset Tip Boom (CDAC)  
 #16HL Jib  
 207,000 Pound Upper Counterweight  
 56,000 Pound Carbody Counterweight

CDAC

BOOM AND JIB LENGTH	JIB RADIUS (FEET)	5.0 DEG OFFSET		15.0 DEG OFFSET		25.0 DEG OFFSET	
		BOOM ANGLE	RATING (POUNDS)	BOOM ANGLE	RATING (POUNDS)	BOOM ANGLE	RATING (POUNDS)
70' JIB & 210' BOOM	51	81.9	22,200 *				
	60	80.0	21,520 *				
	70	78.0	20,750 *	80.3	18,540 *		
	80	75.9	20,130 *	78.2	18,030 *	80.5	16,370 *
	90	73.7	19,530 *	76.1	17,590 *	78.3	15,990 *
	100	71.6	18,950 *	73.9	17,130 *	76.1	15,570 *
	110	69.4	18,360 *	71.8	16,730 *	73.9	15,200 *
	120	67.2	17,900 *	69.5	16,350 *	71.7	14,440 *
	130	65.0	17,400 *	67.3	15,900 *	69.4	13,790 *
	140	62.7	16,970 *	65.0	15,480 *	67.0	13,150 *
	150	60.3	16,590 *	62.6	15,130 *	64.6	12,600 *
	160	57.9	16,060 *	60.2	14,770 *	62.2	12,120 *
	170	55.5	15,630 *	57.7	14,500 *	59.6	11,720 *
	180	52.9	15,240 *	55.1	14,140 *	57.0	11,330 *
190	50.3	14,880 *	52.5	13,570 *	54.3	10,970 *	
200	47.5	14,610 *	49.7	13,030 *	51.5	10,670 *	
210	44.7	14,290 *	46.8	12,580 *	48.5	10,380 *	
70' JIB & 220' BOOM	52	82.0	22,150 *				
	60	80.4	21,560 *				
	70	78.4	20,830 *	80.7	18,510 *		
	80	76.4	20,210 *	78.7	18,070 *	80.8	16,430 *
	90	74.3	19,610 *	76.6	17,620 *	78.7	16,040 *
	100	72.3	19,070 *	74.5	17,180 *	76.6	15,650 *
	110	70.2	18,530 *	72.4	16,820 *	74.5	15,300 *
	120	68.0	18,050 *	70.3	16,410 *	72.4	14,630 *
	130	65.9	17,580 *	68.1	15,980 *	70.2	13,980 *
	140	63.7	17,130 *	65.9	15,570 *	67.9	13,330 *
	150	61.5	16,680 *	63.7	15,210 *	65.6	12,800 *
	160	59.2	16,310 *	61.4	14,900 *	63.3	12,330 *
	170	56.8	15,870 *	59.0	14,570 *	60.9	11,880 *
	180	54.4	15,480 *	56.6	14,320 *	58.4	11,470 *
190	51.9	15,110 *	54.0	13,860 *	55.9	11,130 *	
200	49.3	14,770 *	51.4	13,300 *	53.2	10,820 *	
210	46.7	14,450 *	48.7	12,840 *	50.4	10,530 *	
220	43.8	14,180 *	45.9	12,400 *	47.5	10,270 *	



Model HC285 Crawler Crane - Ratings In Pounds  
 92HI Offset Tip Boom (CDAC)  
 #16HL Jib  
 207,000 Pound Upper Counterweight  
 56,000 Pound Carbody Counterweight

CDAC

BOOM AND JIB LENGTH	JIB RADIUS (FEET)	5.0 DEG OFFSET		15.0 DEG OFFSET		25.0 DEG OFFSET	
		BOOM ANGLE	RATING (POUNDS)	BOOM ANGLE	RATING (POUNDS)	BOOM ANGLE	RATING (POUNDS)
70' JIB & 230' BOOM	54	81.9	21,980 *				
	60	80.7	21,580 *				
	70	78.8	20,860 *	81.0	18,580 *		
	80	76.8	20,260 *	79.0	18,070 *	81.1	16,390 *
	90	74.9	19,700 *	77.1	17,630 *	79.1	16,080 *
	100	72.9	19,120 *	75.1	17,240 *	77.1	15,660 *
	110	70.9	18,620 *	73.0	16,840 *	75.1	15,330 *
	120	68.8	18,170 *	71.0	16,470 *	73.0	14,820 *
	130	66.7	17,650 *	68.9	16,090 *	70.9	14,130 *
	140	64.6	17,280 *	66.8	15,730 *	68.7	13,530 *
	150	62.5	16,870 *	64.6	15,330 *	66.5	12,990 *
	160	60.3	16,460 *	62.4	15,010 *	64.3	12,450 *
	170	58.1	16,020 *	60.2	14,720 *	62.0	12,050 *
	180	55.8	15,610 *	57.9	14,410 *	59.7	11,630 *
	190	53.4	15,250 *	55.5	14,150 *	57.3	11,250 *
200	51.0	14,910 *	53.0	13,620 *	54.7	10,930 *	
210	48.5	14,590 *	50.5	13,110 *	52.1	10,670 *	
220	45.8	14,360 *	47.8	12,660 *	49.4	10,390 *	
230	43.0	13,470	45.0	12,290 *	46.5	10,170 *	
70' JIB & 240' BOOM	55	81.9	21,960 *				
	60	81.0	21,600 *				
	70	79.1	20,930 *	81.3	18,550 *		
	80	77.3	20,340 *	79.4	18,090 *	81.4	16,380 *
	90	75.4	19,730 *	77.5	17,690 *	79.5	16,090 *
	100	73.4	19,230 *	75.6	17,240 *	77.6	15,700 *
	110	71.5	18,670 *	73.6	16,880 *	75.6	15,320 *
	120	69.5	18,210 *	71.6	16,520 *	73.6	14,960 *
	130	67.5	17,790 *	69.6	16,160 *	71.6	14,260 *
	140	65.5	17,370 *	67.6	15,780 *	69.5	13,690 *
	150	63.5	16,940 *	65.5	15,410 *	67.4	13,130 *
	160	61.4	16,570 *	63.4	15,070 *	65.3	12,620 *
	170	59.2	16,190 *	61.3	14,780 *	63.1	12,200 *
	180	57.0	15,840 *	59.1	14,510 *	60.8	11,760 *
	190	54.8	15,450 *	56.8	14,280 *	58.5	11,420 *
200	52.5	15,100 *	54.5	13,890 *	56.2	11,090 *	
210	50.1	14,780 *	52.0	13,390 *	53.7	10,790 *	
220	47.6	14,200	49.5	12,930 *	51.1	10,500 *	
230	45.0	12,860	46.9	12,490 *	48.5	10,280 *	
240	42.3	11,650	44.2	11,660	45.6	10,110 *	



Model HC285 Crawler Crane - Ratings In Pounds  
 92HI Offset Tip Boom (CDAC)  
 #16HL Jib  
 207,000 Pound Upper Counterweight  
 56,000 Pound Carbody Counterweight

CDAC

BOOM AND JIB LENGTH	JIB RADIUS (FEET)	5.0 DEG OFFSET		15.0 DEG OFFSET		25.0 DEG OFFSET	
		BOOM ANGLE	RATING (POUNDS)	BOOM ANGLE	RATING (POUNDS)	BOOM ANGLE	RATING (POUNDS)
70' JIB & 250' BOOM	57	81.8	21,870 *				
	60	81.3	21,670 *				
	70	79.5	20,990 *	81.6	18,580 *		
	80	77.7	20,440 *	79.7	18,140 *	81.7	16,390 *
	90	75.8	19,820 *	77.9	17,740 *	79.8	16,090 *
	100	74.0	19,280 *	76.0	17,340 *	78.0	15,720 *
	110	72.1	18,840 *	74.1	16,950 *	76.1	15,420 *
	120	70.2	18,340 *	72.2	16,600 *	74.1	15,060 *
	130	68.3	17,870 *	70.3	16,260 *	72.2	14,420 *
	140	66.3	17,490 *	68.4	15,930 *	70.2	13,820 *
	150	64.4	17,090 *	66.4	15,510 *	68.2	13,280 *
	160	62.3	16,710 *	64.3	15,220 *	66.1	12,770 *
	170	60.3	16,340 *	62.3	14,910 *	64.0	12,340 *
	180	58.2	15,990 *	60.2	14,620 *	61.9	11,940 *
	190	56.1	15,600 *	58.0	14,380 *	59.7	11,540 *
	200	53.9	15,240 *	55.8	14,090 *	57.4	11,200 *
	210	51.6	14,910 *	53.5	13,650 *	55.1	10,940 *
220	49.2	13,590 *	51.1	13,130 *	52.7	10,640 *	
230	46.8	12,240 *	48.7	12,250 *	50.2	10,410 *	
240	44.3	11,020 *	46.1	11,030 *	47.6	10,190 *	
250	41.6	9,910 *	43.4	9,920 *	44.8	9,950 *	
70' JIB & 260' BOOM	58	81.9	21,780 *				
	60	81.6	21,650 *				
	70	79.8	21,090 *	81.8	18,610 *		
	80	78.0	20,500 *	80.1	18,120 *	82.0	16,360 *
	90	76.3	19,940 *	78.3	17,720 *	80.2	16,040 *
	100	74.5	19,420 *	76.5	17,340 *	78.3	15,750 *
	110	72.7	18,920 *	74.6	16,970 *	76.5	15,390 *
	120	70.8	18,450 *	72.8	16,650 *	74.6	15,130 *
	130	69.0	18,010 *	70.9	16,270 *	72.8	14,610 *
	140	67.1	17,580 *	69.1	15,970 *	70.8	13,970 *
	150	65.2	17,220 *	67.1	15,650 *	68.9	13,410 *
	160	63.3	16,810 *	65.2	15,280 *	66.9	12,910 *
	170	61.3	16,490 *	63.2	14,990 *	64.9	12,500 *
	180	59.3	16,110 *	61.2	14,700 *	62.9	12,080 *
	190	57.2	15,790 *	59.1	14,440 *	60.8	11,700 *
	200	55.1	15,430 *	57.0	14,230 *	58.6	11,330 *
	210	53.0	14,470 *	54.8	13,900 *	56.4	11,050 *
220	50.7	12,990 *	52.6	13,000 *	54.1	10,740 *	
230	48.4	11,640 *	50.3	11,650 *	51.8	10,500 *	
240	46.0	10,410 *	47.8	10,420 *	49.3	10,270 *	
250	43.5	9,300 *	45.3	9,310 *	46.7	9,340 *	
260	40.9	8,280 *	42.7	8,290 *	44.0	8,310 *	



Model HC285 Crawler Crane - Ratings In Pounds  
 92HI Offset Tip Boom (CDAC)  
 #16HL Jib  
 207,000 Pound Upper Counterweight  
 56,000 Pound Carbody Counterweight

CDAC

BOOM AND JIB LENGTH	JIB RADIUS (FEET)	5.0 DEG OFFSET		15.0 DEG OFFSET		25.0 DEG OFFSET	
		BOOM ANGLE	RATING (POUNDS)	BOOM ANGLE	RATING (POUNDS)	BOOM ANGLE	RATING (POUNDS)
70' JIB & 270' BOOM	59	82.0	21,770 *				
	60	81.8	21,740 *				
	70	80.1	21,100 *				
	80	78.4	20,490 *	80.4	18,140 *		
	90	76.7	19,940 *	78.6	17,760 *	80.5	16,060 *
	100	74.9	19,480 *	76.9	17,340 *	78.7	15,730 *
	110	73.2	18,960 *	75.1	16,990 *	76.9	15,440 *
	120	71.4	18,510 *	73.3	16,680 *	75.1	15,120 *
	130	69.6	18,100 *	71.5	16,330 *	73.3	14,700 *
	140	67.8	17,700 *	69.7	16,050 *	71.5	14,100 *
	150	66.0	17,300 *	67.9	15,700 *	69.6	13,570 *
	160	64.1	16,890 *	66.0	15,390 *	67.7	13,040 *
	170	62.2	16,590 *	64.1	15,110 *	65.8	12,620 *
	180	60.3	16,280 *	62.1	14,810 *	63.8	12,190 *
	190	58.3	15,950 *	60.2	14,540 *	61.8	11,850 *
	200	56.3	15,520 *	58.1	14,290 *	59.7	11,480 *
	210	54.2	13,870 *	56.0	13,880 *	57.6	11,180 *
	220	52.1	12,380 *	53.9	12,390 *	55.4	10,860 *
	230	49.9	11,030 *	51.7	11,040 *	53.2	10,610 *
	240	47.7	9,800 *	49.4	9,810 *	50.9	9,830 *
250	45.3	8,680 *	47.0	8,700 *	48.4	8,720 *	
260	42.8	7,660 *	44.6	7,680 *	45.9	7,700 *	
270	40.3	6,730 *	42.0	6,740 *	43.2	6,770 *	
70' JIB & 280' BOOM	61	81.9	21,580 *				
	70	80.4	21,070 *				
	80	78.7	20,460 *	80.6	18,080 *		
	90	77.1	19,930 *	79.0	17,710 *	80.7	15,980 *
	100	75.4	19,480 *	77.3	17,390 *	79.0	15,730 *
	110	73.7	18,960 *	75.6	17,040 *	77.3	15,470 *
	120	72.0	18,550 *	73.8	16,690 *	75.6	15,150 *
	130	70.2	18,170 *	72.1	16,360 *	73.8	14,830 *
	140	68.5	17,730 *	70.3	16,040 *	72.0	14,260 *
	150	66.7	17,370 *	68.5	15,790 *	70.2	13,700 *
	160	64.9	16,950 *	66.7	15,440 *	68.4	13,210 *
	170	63.1	16,680 *	64.9	15,140 *	66.5	12,770 *
	180	61.2	16,290 *	63.0	14,890 *	64.6	12,320 *
	190	59.3	16,000 *	61.1	14,600 *	62.7	11,970 *
	200	57.4	15,110 *	59.2	14,360 *	60.7	11,590 *
	210	55.4	13,460 *	57.2	13,470 *	58.7	11,290 *
	220	53.4	11,980 *	55.1	11,990 *	56.6	11,000 *
	230	51.3	10,620 *	53.0	10,630 *	54.5	10,650 *
	240	49.1	9,390 *	50.9	9,400 *	52.3	9,430 *
	250	46.9	8,280 *	48.6	8,290 *	50.0	8,310 *
260	44.6	7,260 *	46.3	7,270 *	47.6	7,290 *	
270	42.2	6,320 *	43.8	6,330 *	45.1	6,350 *	
280	39.7	5,450 *	41.3	5,460 *	42.5	5,490 *	





Model HC285 Crawler Crane - Ratings In Pounds  
 92HI Offset Tip Boom (CDAC)  
 #16HL Jib  
 207,000 Pound Upper Counterweight  
 56,000 Pound Carbody Counterweight

CDAC

BOOM AND JIB LENGTH	JIB RADIUS (FEET)	5.0 DEG OFFSET		15.0 DEG OFFSET		25.0 DEG OFFSET	
		BOOM ANGLE	RATING (POUNDS)	BOOM ANGLE	RATING (POUNDS)	BOOM ANGLE	RATING (POUNDS)
80' JIB & 200' BOOM	52	81.9	17,370 *				
	60	80.2	16,800 *				
	70	78.1	16,120 *	80.9	14,110 *		
	80	76.0	15,490 *	78.8	13,650 *	81.3	12,000 *
	90	73.9	14,930 *	76.6	13,130 *	79.2	11,600 *
	100	71.8	14,400 *	74.5	12,640 *	77.0	11,240 *
	110	69.6	13,900 *	72.3	12,240 *	74.8	10,960 *
	120	67.4	13,410 *	70.1	11,830 *	72.5	10,680 *
	130	65.1	12,870 *	67.8	11,420 *	70.2	10,380 *
	140	62.9	12,390 *	65.5	11,120 *	67.9	10,180 *
	150	60.5	11,970 *	63.1	10,810 *	65.5	9,950 *
	160	58.1	11,560 *	60.7	10,520 *	63.0	9,780 *
	170	55.6	11,210 *	58.2	10,300 *	60.5	9,600 *
80' JIB & 210' BOOM	53	82.0	17,330 *				
	60	80.6	16,860 *				
	70	78.6	16,210 *	81.2	14,140 *		
	80	76.5	15,560 *	79.2	13,730 *	81.7	12,010 *
	90	74.5	15,040 *	77.1	13,200 *	79.6	11,600 *
	100	72.4	14,520 *	75.0	12,740 *	77.5	11,260 *
	110	70.3	14,000 *	72.9	12,290 *	75.3	10,960 *
	120	68.2	13,540 *	70.8	11,910 *	73.2	10,700 *
	130	66.1	13,030 *	68.6	11,520 *	71.0	10,460 *
	140	63.9	12,540 *	66.4	11,190 *	68.7	10,190 *
	150	61.6	12,110 *	64.2	10,900 *	66.4	9,990 *
	160	59.3	11,710 *	61.9	10,600 *	64.1	9,820 *
	170	57.0	11,350 *	59.5	10,380 *	61.7	9,660 *
180	54.6	11,020 *	57.1	10,170 *	59.2	9,530 *	
190	52.1	10,770 *	54.5	9,940 *	56.6	9,400 *	
200	49.5	10,490 *	51.9	9,770 *	54.0	9,300 *	
210	46.8	10,230 *	49.2	9,620 *	51.2	9,090 *	



Model HC285 Crawler Crane - Ratings In Pounds  
 92HI Offset Tip Boom (CDAC)  
 #16HL Jib  
 207,000 Pound Upper Counterweight  
 56,000 Pound Carbody Counterweight

CDAC

BOOM AND JIB LENGTH	JIB RADIUS (FEET)	5.0 DEG OFFSET		15.0 DEG OFFSET		25.0 DEG OFFSET	
		BOOM ANGLE	RATING (POUNDS)	BOOM ANGLE	RATING (POUNDS)	BOOM ANGLE	RATING (POUNDS)
80' JIB & 220' BOOM	55	81.8	17,230 *				
	60	80.9	16,930 *				
	70	78.9	16,270 *	81.5	14,170 *		
	80	77.0	15,660 *	79.5	13,760 *	81.9	11,990 *
	90	75.0	15,130 *	77.6	13,300 *	79.9	11,660 *
	100	73.0	14,630 *	75.6	12,820 *	77.9	11,310 *
	110	71.0	14,130 *	73.5	12,380 *	75.9	10,980 *
	120	69.0	13,700 *	71.5	11,960 *	73.8	10,740 *
	130	66.9	13,170 *	69.4	11,620 *	71.7	10,450 *
	140	64.8	12,730 *	67.3	11,270 *	69.5	10,220 *
	150	62.7	12,270 *	65.1	10,970 *	67.3	10,010 *
	160	60.5	11,860 *	62.9	10,710 *	65.1	9,830 *
	170	58.2	11,540 *	60.7	10,470 *	62.8	9,670 *
	180	55.9	11,210 *	58.3	10,210 *	60.4	9,520 *
	190	53.6	10,900 *	56.0	10,020 *	58.0	9,390 *
	200	51.1	10,620 *	53.5	9,840 *	55.5	9,310 *
210	48.6	10,350 *	50.9	9,680 *	52.9	9,200 *	
220	46.0	10,130 *	48.3	9,530 *	50.1	8,970 *	
80' JIB & 230' BOOM	56	81.9	17,220 *				
	60	81.2	16,970 *				
	70	79.3	16,340 *	81.8	14,170 *		
	80	77.4	15,710 *	79.9	13,710 *		
	90	75.5	15,190 *	78.0	13,340 *	80.3	11,660 *
	100	73.6	14,660 *	76.0	12,870 *	78.3	11,350 *
	110	71.7	14,200 *	74.1	12,460 *	76.3	11,010 *
	120	69.7	13,780 *	72.1	12,070 *	74.3	10,760 *
	130	67.7	13,320 *	70.1	11,690 *	72.3	10,500 *
	140	65.7	12,840 *	68.1	11,380 *	70.2	10,290 *
	150	63.6	12,440 *	66.0	11,070 *	68.1	10,060 *
	160	61.5	12,020 *	63.9	10,790 *	66.0	9,870 *
	170	59.4	11,640 *	61.7	10,530 *	63.8	9,700 *
	180	57.2	11,300 *	59.5	10,320 *	61.6	9,540 *
	190	55.0	11,040 *	57.3	10,070 *	59.3	9,440 *
	200	52.6	10,750 *	54.9	9,900 *	56.9	9,310 *
210	50.2	10,480 *	52.5	9,730 *	54.4	9,240 *	
220	47.8	10,280 *	50.0	9,580 *	51.8	9,090 *	
230	45.2	10,040 *	47.4	9,460 *	49.2	8,870 *	



Model HC285 Crawler Crane - Ratings In Pounds  
 92HI Offset Tip Boom (CDAC)  
 #16HL Jib  
 207,000 Pound Upper Counterweight  
 56,000 Pound Carbody Counterweight

CDAC

BOOM AND JIB LENGTH	JIB RADIUS (FEET)	5.0 DEG OFFSET		15.0 DEG OFFSET		25.0 DEG OFFSET	
		BOOM ANGLE	RATING (POUNDS)	BOOM ANGLE	RATING (POUNDS)	BOOM ANGLE	RATING (POUNDS)
80' JIB & 240' BOOM	57	82.0	17,150 *				
	60	81.4	16,980 *				
	70	79.6	16,330 *				
	80	77.8	15,790 *	80.2	13,770 *		
	90	76.0	15,260 *	78.4	13,380 *	80.6	11,690 *
	100	74.1	14,740 *	76.5	12,960 *	78.7	11,330 *
	110	72.2	14,320 *	74.6	12,540 *	76.8	11,060 *
	120	70.4	13,890 *	72.7	12,120 *	74.9	10,770 *
	130	68.4	13,440 *	70.8	11,760 *	72.9	10,540 *
	140	66.5	13,000 *	68.8	11,430 *	70.9	10,290 *
	150	64.5	12,560 *	66.8	11,120 *	68.9	10,100 *
	160	62.5	12,180 *	64.8	10,830 *	66.9	9,890 *
	170	60.5	11,780 *	62.7	10,580 *	64.8	9,750 *
	180	58.4	11,440 *	60.6	10,350 *	62.6	9,560 *
	190	56.2	11,160 *	58.4	10,150 *	60.4	9,460 *
	200	54.0	10,870 *	56.2	9,960 *	58.1	9,330 *
210	51.7	10,590 *	53.9	9,810 *	55.8	9,250 *	
220	49.4	10,390 *	51.6	9,650 *	53.4	9,150 *	
230	47.0	10,150 *	49.1	9,500 *	50.9	8,950 *	
240	44.4	9,970 *	46.5	9,410 *	48.2	8,780 *	
80' JIB & 250' BOOM	59	81.9	17,070 *				
	60	81.7	16,990 *				
	70	80.0	16,400 *				
	80	78.2	15,830 *	80.5	13,740 *		
	90	76.4	15,310 *	78.7	13,420 *	80.9	11,660 *
	100	74.6	14,820 *	76.9	12,990 *	79.1	11,350 *
	110	72.8	14,390 *	75.1	12,590 *	77.2	11,040 *
	120	71.0	13,930 *	73.2	12,160 *	75.4	10,810 *
	130	69.1	13,570 *	71.4	11,800 *	73.5	10,560 *
	140	67.2	13,160 *	69.5	11,520 *	71.6	10,320 *
	150	65.3	12,700 *	67.6	11,220 *	69.6	10,110 *
	160	63.4	12,300 *	65.6	10,920 *	67.6	9,930 *
	170	61.4	11,950 *	63.6	10,650 *	65.6	9,750 *
	180	59.4	11,580 *	61.6	10,410 *	63.6	9,620 *
	190	57.4	11,250 *	59.6	10,200 *	61.5	9,460 *
	200	55.3	11,000 *	57.4	10,000 *	59.3	9,370 *
210	53.1	10,720 *	55.2	9,870 *	57.1	9,240 *	
220	50.9	10,460 *	53.0	9,710 *	54.8	9,160 *	
230	48.6	10,260 *	50.7	9,560 *	52.4	9,060 *	
240	46.2	10,080 *	48.3	9,460 *	49.9	8,870 *	
250	43.7	9,910 *	45.7	9,330 *	47.4	8,700 *	



Model HC285 Crawler Crane - Ratings In Pounds  
 92HI Offset Tip Boom (CDAC)  
 #16HL Jib  
 207,000 Pound Upper Counterweight  
 56,000 Pound Carbody Counterweight

CDAC

BOOM AND JIB LENGTH	JIB RADIUS (FEET)	5.0 DEG OFFSET		15.0 DEG OFFSET		25.0 DEG OFFSET	
		BOOM ANGLE	RATING (POUNDS)	BOOM ANGLE	RATING (POUNDS)	BOOM ANGLE	RATING (POUNDS)
80' JIB & 260' BOOM	60	82.0	17,020 *				
	70	80.3	16,460 *				
	80	78.5	15,930 *	80.8	13,760 *		
	90	76.8	15,400 *	79.1	13,390 *	81.2	11,680 *
	100	75.1	14,870 *	77.3	13,010 *	79.4	11,360 *
	110	73.3	14,450 *	75.5	12,620 *	77.6	11,060 *
	120	71.6	14,030 *	73.8	12,270 *	75.8	10,830 *
	130	69.8	13,650 *	72.0	11,880 *	74.0	10,560 *
	140	68.0	13,280 *	70.1	11,570 *	72.1	10,340 *
	150	66.1	12,860 *	68.3	11,250 *	70.3	10,160 *
	160	64.3	12,440 *	66.4	10,980 *	68.4	9,970 *
	170	62.4	12,070 *	64.5	10,740 *	66.4	9,800 *
	180	60.4	11,690 *	62.6	10,490 *	64.5	9,610 *
	190	58.5	11,380 *	60.6	10,270 *	62.4	9,480 *
	200	56.4	11,120 *	58.5	10,070 *	60.4	9,380 *
	210	54.4	10,830 *	56.5	9,930 *	58.3	9,280 *
	220	52.3	10,610 *	54.3	9,760 *	56.1	9,150 *
230	50.1	10,360 *	52.1	9,600 *	53.8	9,080 *	
240	47.8	10,170 *	49.8	9,500 *	51.5	8,930 *	
250	45.4	9,580 *	47.4	9,360 *	49.1	8,750 *	
260	43.0	8,550 *	45.0	8,570 *	46.5	8,590 *	
80' JIB & 270' BOOM	62	81.9	16,920 *				
	70	80.5	16,450 *				
	80	78.9	15,920 *	81.1	13,800 *		
	90	77.2	15,400 *	79.4	13,400 *	81.4	11,690 *
	100	75.5	14,960 *	77.7	13,080 *	79.7	11,390 *
	110	73.8	14,520 *	76.0	12,690 *	78.0	11,110 *
	120	72.1	14,130 *	74.3	12,300 *	76.2	10,840 *
	130	70.4	13,700 *	72.5	11,960 *	74.5	10,590 *
	140	68.6	13,350 *	70.7	11,620 *	72.7	10,390 *
	150	66.8	12,970 *	69.0	11,330 *	70.9	10,180 *
	160	65.0	12,530 *	67.1	11,040 *	69.1	9,970 *
	170	63.2	12,170 *	65.3	10,790 *	67.2	9,790 *
	180	61.4	11,830 *	63.4	10,580 *	65.3	9,630 *
	190	59.5	11,520 *	61.5	10,320 *	63.4	9,500 *
	200	57.5	11,190 *	59.6	10,160 *	61.4	9,380 *
	210	55.5	10,940 *	57.6	9,960 *	59.4	9,270 *
	220	53.5	10,710 *	55.5	9,790 *	57.3	9,180 *
230	51.4	10,450 *	53.4	9,670 *	55.1	9,100 *	
240	49.3	10,080 *	51.3	9,500 *	52.9	9,020 *	
250	47.1	8,970 *	49.0	8,980 *	50.6	8,840 *	
260	44.7	7,950 *	46.7	7,960 *	48.2	7,980 *	
270	42.3	7,010 *	44.2	7,020 *	45.7	7,050 *	



Model HC285 Crawler Crane - Ratings In Pounds  
 92HI Offset Tip Boom (CDAC)  
 #16HL Jib  
 207,000 Pound Upper Counterweight  
 56,000 Pound Carbody Counterweight

CDAC

BOOM AND JIB LENGTH	JIB RADIUS (FEET)	5.0 DEG OFFSET		15.0 DEG OFFSET		25.0 DEG OFFSET	
		BOOM ANGLE	RATING (POUNDS)	BOOM ANGLE	RATING (POUNDS)	BOOM ANGLE	RATING (POUNDS)
80'	63	81.9	16,860 *				
JIB	70	80.8	16,450 *				
&	80	79.2	15,970 *	81.3	13,780 *		
280'	90	77.6	15,440 *	79.7	13,430 *	81.7	11,690 *
BOOM	100	75.9	15,000 *	78.0	13,060 *	80.0	11,370 *
	110	74.3	14,570 *	76.4	12,710 *	78.3	11,080 *
	120	72.6	14,130 *	74.7	12,350 *	76.7	10,840 *
	130	70.9	13,790 *	73.0	12,030 *	74.9	10,600 *
	140	69.2	13,380 *	71.3	11,660 *	73.2	10,390 *
	150	67.5	13,060 *	69.6	11,410 *	71.5	10,170 *
	160	65.8	12,660 *	67.8	11,080 *	69.7	9,990 *
	170	64.0	12,320 *	66.1	10,870 *	67.9	9,840 *
	180	62.2	11,960 *	64.3	10,640 *	66.1	9,650 *
	190	60.4	11,640 *	62.4	10,390 *	64.2	9,510 *
	200	58.5	11,300 *	60.5	10,180 *	62.3	9,380 *
	210	56.6	11,040 *	58.6	10,030 *	60.4	9,270 *
	220	54.7	10,800 *	56.7	9,840 *	58.4	9,190 *
	230	52.7	10,580 *	54.7	9,710 *	56.3	9,110 *
	240	50.7	9,680 *	52.6	9,570 *	54.2	9,030 *
	250	48.5	8,550 *	50.5	8,570 *	52.0	8,590 *
	260	46.4	7,530 *	48.2	7,540 *	49.8	7,570 *
	270	44.1	6,590 *	45.9	6,600 *	47.4	6,630 *
	280	41.7	5,730 *	43.5	5,740 *	45.0	5,770 *



Model HC285 Crawler Crane - Ratings In Pounds  
 92HI Offset Tip Boom (CDAC)  
 #16HL Jib  
 207,000 Pound Upper Counterweight  
 56,000 Pound Carbody Counterweight

CDAC

BOOM AND JIB LENGTH	JIB RADIUS (FEET)	5.0 DEG OFFSET			15.0 DEG OFFSET			25.0 DEG OFFSET		
		BOOM ANGLE	RATING (POUNDS)		BOOM ANGLE	RATING (POUNDS)		BOOM ANGLE	RATING (POUNDS)	
90' JIB & 230' BOOM	58	82.0	13,740 *							
	60	81.6	13,610 *							
	70	79.8	13,100 *							
	80	78.0	12,550 *	80.7	10,340 *					
	90	76.1	11,970 *	78.8	9,930 *	81.4	8,530 *			
	100	74.3	11,380 *	76.9	9,550 *	79.5	8,250 *			
	110	72.4	10,830 *	75.1	9,180 *	77.6	7,980 *			
	120	70.5	10,360 *	73.2	8,860 *	75.6	7,760 *			
	130	68.6	9,930 *	71.2	8,550 *	73.7	7,570 *			
	140	66.6	9,560 *	69.3	8,280 *	71.7	7,350 *			
	150	64.7	9,200 *	67.3	8,020 *	69.6	7,200 *			
	160	62.7	8,840 *	65.2	7,820 *	67.6	7,030 *			
	170	60.6	8,550 *	63.2	7,610 *	65.5	6,890 *			
	180	58.5	8,260 *	61.1	7,380 *	63.3	6,750 *			
	190	56.4	8,030 *	58.9	7,210 *	61.1	6,670 *			
200	54.2	7,790 *	56.7	7,060 *	58.9	6,560 *				
210	51.9	7,600 *	54.4	6,950 *	56.5	6,490 *				
220	49.5	7,390 *	52.0	6,820 *	54.1	6,400 *				
230	47.1	7,230 *	49.5	6,700 *	51.6	6,350 *				
90' JIB & 240' BOOM	60	81.9	13,650 *							
	70	80.1	13,130 *							
	80	78.3	12,570 *	81.0	10,400 *					
	90	76.6	12,040 *	79.2	9,940 *	81.6	8,500 *			
	100	74.8	11,480 *	77.4	9,580 *	79.8	8,220 *			
	110	73.0	10,950 *	75.5	9,240 *	78.0	8,010 *			
	120	71.1	10,490 *	73.7	8,890 *	76.1	7,770 *			
	130	69.3	10,040 *	71.8	8,590 *	74.2	7,580 *			
	140	67.4	9,650 *	69.9	8,310 *	72.3	7,380 *			
	150	65.5	9,270 *	68.0	8,070 *	70.3	7,220 *			
	160	63.6	8,940 *	66.1	7,860 *	68.4	7,040 *			
	170	61.6	8,650 *	64.1	7,640 *	66.3	6,920 *			
	180	59.6	8,390 *	62.1	7,440 *	64.3	6,780 *			
	190	57.5	8,110 *	60.0	7,260 *	62.2	6,650 *			
	200	55.4	7,890 *	57.9	7,100 *	60.0	6,570 *			
210	53.3	7,660 *	55.7	6,990 *	57.8	6,460 *				
220	51.0	7,480 *	53.4	6,850 *	55.5	6,400 *				
230	48.7	7,310 *	51.1	6,730 *	53.1	6,340 *				
240	46.3	7,160 *	48.7	6,640 *	50.6	6,320 *				



Model HC285 Crawler Crane - Ratings In Pounds  
 92HI Offset Tip Boom (CDAC)  
 #16HL Jib  
 207,000 Pound Upper Counterweight  
 56,000 Pound Carbody Counterweight

CDAC

BOOM AND JIB LENGTH	JIB RADIUS (FEET)	5.0 DEG OFFSET		15.0 DEG OFFSET		25.0 DEG OFFSET	
		BOOM ANGLE	RATING (POUNDS)	BOOM ANGLE	RATING (POUNDS)	BOOM ANGLE	RATING (POUNDS)
90' JIB & 250' BOOM	61	81.9	13,640 *				
	70	80.4	13,140 *				
	80	78.7	12,620 *	81.2	10,410 *		
	90	77.0	12,110 *	79.5	9,990 *	81.9	8,520 *
	100	75.2	11,540 *	77.7	9,600 *	80.1	8,230 *
	110	73.5	11,040 *	76.0	9,280 *	78.3	7,990 *
	120	71.7	10,590 *	74.2	8,930 *	76.5	7,760 *
	130	69.9	10,160 *	72.4	8,620 *	74.7	7,580 *
	140	68.1	9,760 *	70.6	8,360 *	72.8	7,370 *
	150	66.3	9,360 *	68.7	8,130 *	71.0	7,230 *
	160	64.4	9,060 *	66.8	7,910 *	69.1	7,070 *
	170	62.5	8,750 *	64.9	7,680 *	67.1	6,900 *
	180	60.6	8,480 *	63.0	7,510 *	65.1	6,780 *
	190	58.6	8,190 *	61.0	7,320 *	63.1	6,670 *
	200	56.6	7,970 *	59.0	7,150 *	61.1	6,580 *
	210	54.5	7,770 *	56.9	6,990 *	58.9	6,470 *
220	52.4	7,540 *	54.7	6,890 *	56.7	6,400 *	
230	50.2	7,370 *	52.5	6,760 *	54.5	6,340 *	
240	47.9	7,210 *	50.2	6,670 *	52.2	6,310 *	
250	45.6	7,070 *	47.9	6,590 *	49.7	6,260 *	
90' JIB & 260' BOOM	62	82.0	13,580 *				
	70	80.7	13,200 *				
	80	79.0	12,680 *	81.5	10,410 *		
	90	77.3	12,190 *	79.8	10,000 *		
	100	75.7	11,650 *	78.1	9,620 *	80.4	8,230 *
	110	74.0	11,150 *	76.4	9,290 *	78.7	8,000 *
	120	72.2	10,660 *	74.7	8,960 *	76.9	7,780 *
	130	70.5	10,220 *	72.9	8,670 *	75.2	7,580 *
	140	68.8	9,840 *	71.2	8,390 *	73.4	7,370 *
	150	67.0	9,470 *	69.4	8,170 *	71.6	7,210 *
	160	65.2	9,150 *	67.6	7,940 *	69.7	7,080 *
	170	63.4	8,830 *	65.7	7,730 *	67.9	6,930 *
	180	61.5	8,540 *	63.8	7,550 *	66.0	6,800 *
	190	59.6	8,290 *	61.9	7,350 *	64.0	6,670 *
	200	57.7	8,050 *	60.0	7,210 *	62.0	6,570 *
	210	55.7	7,840 *	58.0	7,050 *	60.0	6,490 *
220	53.7	7,620 *	55.9	6,900 *	57.9	6,410 *	
230	51.6	7,440 *	53.8	6,790 *	55.8	6,340 *	
240	49.4	7,280 *	51.7	6,700 *	53.6	6,280 *	
250	47.2	7,120 *	49.4	6,590 *	51.3	6,260 *	
260	44.9	6,980 *	47.1	6,510 *	48.9	6,210 *	



Model HC285 Crawler Crane - Ratings In Pounds  
 92HI Offset Tip Boom (CDAC)  
 #16HL Jib  
 207,000 Pound Upper Counterweight  
 56,000 Pound Carbody Counterweight

CDAC

BOOM AND JIB LENGTH	JIB RADIUS (FEET)	5.0 DEG OFFSET			15.0 DEG OFFSET			25.0 DEG OFFSET		
		BOOM ANGLE	RATING (POUNDS)	*	BOOM ANGLE	RATING (POUNDS)	*	BOOM ANGLE	RATING (POUNDS)	*
90' JIB & 270' BOOM	64	81.9	13,510	*						
	70	80.9	13,200	*						
	80	79.3	12,690	*	81.7	10,430	*			
	90	77.7	12,250	*	80.1	10,010	*			
	100	76.1	11,730	*	78.4	9,650	*	80.7	8,230	*
	110	74.4	11,240	*	76.8	9,330	*	79.0	7,990	*
	120	72.8	10,760	*	75.1	9,000	*	77.3	7,800	*
	130	71.1	10,340	*	73.4	8,730	*	75.6	7,600	*
	140	69.4	9,920	*	71.7	8,440	*	73.9	7,380	*
	150	67.7	9,590	*	70.0	8,190	*	72.1	7,220	*
	160	65.9	9,250	*	68.2	7,980	*	70.3	7,070	*
	170	64.2	8,920	*	66.5	7,760	*	68.5	6,940	*
	180	62.4	8,660	*	64.7	7,570	*	66.7	6,800	*
	190	60.5	8,390	*	62.8	7,390	*	64.8	6,680	*
	200	58.7	8,150	*	60.9	7,230	*	62.9	6,570	*
	210	56.8	7,930	*	59.0	7,060	*	61.0	6,480	*
	220	54.8	7,720	*	57.1	6,940	*	59.0	6,390	*
	230	52.8	7,500	*	55.1	6,830	*	57.0	6,320	*
	240	50.8	7,330	*	53.0	6,700	*	54.8	6,280	*
	250	48.7	7,170	*	50.8	6,610	*	52.7	6,220	*
260	46.5	7,060	*	48.6	6,530	*	50.4	6,200	*	
270	44.2	6,920	*	46.3	6,460	*	48.0	6,180	*	
90' JIB & 280' BOOM	65	82.0	13,460	*						
	70	81.2	13,180	*						
	80	79.6	12,730	*	81.9	10,470	*			
	90	78.0	12,290	*	80.4	10,070	*			
	100	76.4	11,830	*	78.8	9,700	*	81.0	8,220	*
	110	74.8	11,310	*	77.2	9,340	*	79.3	7,990	*
	120	73.2	10,850	*	75.5	9,030	*	77.7	7,780	*
	130	71.6	10,400	*	73.9	8,740	*	76.0	7,580	*
	140	70.0	10,000	*	72.2	8,470	*	74.3	7,390	*
	150	68.3	9,650	*	70.6	8,230	*	72.6	7,240	*
	160	66.6	9,300	*	68.9	8,010	*	70.9	7,070	*
	170	64.9	9,000	*	67.2	7,810	*	69.2	6,940	*
	180	63.2	8,740	*	65.4	7,610	*	67.4	6,820	*
	190	61.4	8,460	*	63.6	7,410	*	65.6	6,680	*
	200	59.6	8,200	*	61.8	7,250	*	63.8	6,560	*
	210	57.8	7,980	*	60.0	7,110	*	61.9	6,490	*
	220	55.9	7,770	*	58.1	6,980	*	60.0	6,400	*
	230	54.0	7,570	*	56.2	6,860	*	58.0	6,320	*
	240	52.1	7,400	*	54.2	6,730	*	56.0	6,270	*
	250	50.0	7,270	*	52.2	6,630	*	54.0	6,200	*
260	48.0	7,120	*	50.1	6,560	*	51.8	6,180	*	
270	45.8	6,840	*	47.9	6,480	*	49.6	6,140	*	
280	43.6	5,970	*	45.6	5,980	*	47.3	6,010	*	





**TEREX**<sup>®</sup>

Model HC285 Crawler Crane - Ratings In Pounds  
92HI Offset Tip Boom (CDAC)

#16HL Jib

207,000 Pound Upper Counterweight  
56,000 Pound Carbody Counterweight

**CDAC**

BOOM AND JIB LENGTH	JIB RADIUS (FEET)	5.0 DEG OFFSET			15.0 DEG OFFSET			25.0 DEG OFFSET		
		BOOM ANGLE	RATING (POUNDS)		BOOM ANGLE	RATING (POUNDS)		BOOM ANGLE	RATING (POUNDS)	
100'	63	82.0	10,260	*						
JIB	70	80.8	9,840	*						
&	80	79.2	9,300	*	81.9	7,350	*			
250'	90	77.5	8,760	*	80.2	7,000	*			
BOOM	100	75.8	8,290	*	78.5	6,720	*	81.1	5,600	*
	110	74.1	7,890	*	76.8	6,450	*	79.4	5,410	*
	120	72.4	7,510	*	75.1	6,170	*	77.6	5,230	*
	130	70.7	7,160	*	73.3	5,950	*	75.9	5,060	*
	140	68.9	6,860	*	71.6	5,720	*	74.1	4,920	*
	150	67.1	6,570	*	69.8	5,510	*	72.2	4,800	*
	160	65.3	6,280	*	68.0	5,330	*	70.4	4,670	*
	170	63.5	6,030	*	66.1	5,170	*	68.5	4,560	*
	180	61.6	5,830	*	64.3	5,010	*	66.6	4,440	*
	190	59.7	5,600	*	62.3	4,890	*	64.7	4,350	*
	200	57.8	5,420	*	60.4	4,750	*	62.7	4,280	*
	210	55.8	5,250	*	58.4	4,650	*	60.7	4,210	*
	220	53.8	5,100	*	56.4	4,540	*	58.6	4,150	*
	230	51.7	4,960	*	54.2	4,460	*	56.4	4,100	*
	240	49.6	4,830	*	52.1	4,380	*	54.2	4,060	*
	250	47.3	4,710	*	49.8	4,320	*	51.9	4,040	*
100'	65	81.9	10,200	*						
JIB	70	81.1	9,870	*						
&	80	79.5	9,330	*						
260'	90	77.8	8,840	*	80.5	7,010	*			
BOOM	100	76.2	8,380	*	78.9	6,720	*	81.4	5,580	*
	110	74.6	7,960	*	77.2	6,430	*	79.7	5,390	*
	120	72.9	7,550	*	75.5	6,190	*	78.0	5,220	*
	130	71.2	7,220	*	73.8	5,950	*	76.3	5,060	*
	140	69.5	6,910	*	72.1	5,750	*	74.5	4,920	*
	150	67.8	6,600	*	70.4	5,560	*	72.8	4,790	*
	160	66.1	6,340	*	68.6	5,360	*	71.0	4,650	*
	170	64.3	6,110	*	66.9	5,190	*	69.2	4,550	*
	180	62.5	5,870	*	65.1	5,040	*	67.4	4,450	*
	190	60.7	5,660	*	63.2	4,910	*	65.5	4,360	*
	200	58.8	5,470	*	61.3	4,790	*	63.6	4,270	*
	210	56.9	5,320	*	59.4	4,660	*	61.6	4,200	*
	220	55.0	5,160	*	57.5	4,560	*	59.6	4,140	*
	230	53.0	5,020	*	55.4	4,480	*	57.6	4,080	*
	240	50.9	4,880	*	53.4	4,380	*	55.5	4,030	*
	250	48.8	4,760	*	51.2	4,310	*	53.3	4,010	*
	260	46.6	4,650	*	49.0	4,240	*	51.0	3,990	*



Model HC285 Crawler Crane - Ratings In Pounds  
 92HI Offset Tip Boom (CDAC)  
 #16HL Jib  
 207,000 Pound Upper Counterweight  
 56,000 Pound Carbody Counterweight

CDAC

BOOM AND JIB LENGTH	JIB RADIUS (FEET)	5.0 DEG OFFSET			15.0 DEG OFFSET			25.0 DEG OFFSET		
		BOOM ANGLE	RATING (POUNDS)		BOOM ANGLE	RATING (POUNDS)		BOOM ANGLE	RATING (POUNDS)	
100'	66	81.9	10,170	*						
JIB	70	81.3	9,950	*						
&	80	79.7	9,360	*						
270'	90	78.2	8,860	*	80.8	7,040	*			
BOOM	100	76.6	8,410	*	79.2	6,720	*	81.6	5,580	*
	110	75.0	8,020	*	77.6	6,450	*	80.0	5,390	*
	120	73.4	7,640	*	75.9	6,210	*	78.3	5,200	*
	130	71.7	7,290	*	74.3	5,980	*	76.7	5,060	*
	140	70.1	6,960	*	72.6	5,770	*	75.0	4,920	*
	150	68.4	6,680	*	71.0	5,560	*	73.3	4,770	*
	160	66.7	6,400	*	69.3	5,380	*	71.6	4,650	*
	170	65.0	6,160	*	67.5	5,230	*	69.8	4,540	*
	180	63.3	5,940	*	65.8	5,070	*	68.1	4,430	*
	190	61.5	5,720	*	64.0	4,930	*	66.3	4,350	*
	200	59.8	5,550	*	62.2	4,800	*	64.4	4,260	*
	210	57.9	5,360	*	60.4	4,680	*	62.5	4,180	*
	220	56.1	5,200	*	58.5	4,580	*	60.6	4,110	*
	230	54.2	5,050	*	56.6	4,470	*	58.7	4,070	*
	240	52.2	4,910	*	54.6	4,380	*	56.6	4,020	*
	250	50.2	4,790	*	52.5	4,310	*	54.6	3,990	*
	260	48.1	4,700	*	50.4	4,240	*	52.4	3,970	*
	270	45.9	4,590	*	48.3	4,210	*	50.2	3,950	*



This rating chart is invalid if the crane has been modified or altered by use of other than GENUINE TEREX PARTS as such modifications or alterations may affect its capacity or safe operation. See Terex Service Bulletin #259.

Ratings in this chart are in POUNDS and do not exceed the percentage of tipping specified for this crane by ANSI B30.5. All ratings require that the crane be standing level on a firm uniformly supporting surface.

Do not lift loads in excess of those shown on this chart. Lifting loads in excess of those shown or operation not in accordance with good operating practice, including limitations shown on page 3499HC of Operator's Manual, can cause tipping, structural damage or catastrophic failure.

Asterisk (\*) areas on this chart indicate ratings which are limited by strength of material or factors other than stability (tipping).

" RADIUS IN FEET " is the horizontal distance at ground level from the crane centerline of rotation to a vertical line through the center of gravity of the suspended load.

When using the main boom fall with jib in place, the main fall ratings must be reduced by the jib effective weight shown on the jib rating chart plus twice the weight of all suspended blocks, slings, rope, etc., at the jib fall. See Appendix A.

Blocks, slings, buckets and other load carrying devices are considered part of the load. The weight of standard hoisting ropes for the rating at a given radius has been calculated as part of the boom point load and need not be considered in determining net allowable loads. See Appendix A.

Ratings shown on this chart make no allowance for such factors as out of plumb loads, wind, poor soil conditions and dynamic effects due to excessive operating speeds. The user (operator) must exercise judgement to make allowance for these conditions. See page 3499HC of Operator's Manual for detailed information.

No account is taken of the wind force on the load. This effect, which can be substantial for loads with large surface areas, must be considered by the user. In any wind it is strongly recommended that taglines be used to control the load.

Combinations of boom or boom and jib with a total length exceeding 350 feet can be operated at full rated capacity only in wind speeds of 15 mph or less. If lifts are to be performed in winds between 15 mph and 25 mph ratings must be reduced 10%. No operation of the above combinations should be attempted in wind speeds over 25 MPH. The above limitations do not take into account loads with excessive surface area which are not restrained by tag lines.



**CDAC**

BOOM HOIST LINE is 22 parts of 26 mm diameter BRIDON ENDURANCE DYFORM 6, 6x31, WS, RRL, IWRC, EIPS wire rope with a minimum breaking strength of 125,670 pounds.

BOOM PENDANT SUSPENSION is 2 part pendant bar suspension (See HC285 Part's Manual).

JIB BACKSTAY LINE is 7/8 inch diameter wire rope with a minimum breaking strength of 69,200 pounds.

JIB FRONTSTAY PENDANT SUSPENSION is 2 parts of 7/8 inch diameter wire rope with a minimum breaking strength of 69,200 pounds.

WHIPLINE is 28 mm diameter ENDURANCE DYFORM 6, 6x31, WS, RRL IWRC, EIPS wire rope with a minimum breaking strength of 143,000 pounds.

ALTERNATE WHIP LINE (ROTATION RESISTANT) is 28 mm diameter BRIDON ENDURANCE DYFORM 34LR Grade 2160 wire rope with a minimum breaking strength of 170,400 pounds.

ERECTION

Erection "OVER-THE-END BLOCKED" is with the boom over the idler end with idler tumblers blocked (See HC285 Operator's Manual for blocking instructions). Erection "OVER-THE-SIDE" is with the boom 90° to the side frames. Blocks, slings and other load carrying devices must be on the ground during erection.

92HI OFFSET TIP BOOM MAXIMUM BOOM & JIB SELF-ERECTION DATA				
JIB	OVER-THE-SIDE		OVER-THE-END BLOCKED	
	BOOM LENGTH (FEET)	JIB LENGTH (FEET)	BOOM LENGTH (FEET)	JIB LENGTH (FEET)
16HL	280	0	300	0
	270	0	290	0
	260	90	280	90
	250	100	270	100



Model HC285 Crawler Crane - Ratings In Pounds  
 92HI Offset Tip Boom (CDAC)  
 #16HL Jib  
 207,000 Pound Upper Counterweight  
 56,000 Pound Carbody Counterweight

CDAC

LOAD HOISTING INFORMATION - 28mm diameter DYFORM 6 wire rope			
MAXIMUM LIFTING CAPACITY - LBS.	MINIMUM PARTS OF LINE	MAXIMUM HOISTING DISTANCE - FEET	
		MAIN HOIST	AUX HOIST
32,000	1	1,310	1,310

LOAD HOISTING INFORMATION (ROTATION RESISTANT LOAD LINE) 28mm diameter BRIDON ENDURANCE DYFORM 34LR Grade 2160 wire rope			
MAXIMUM LIFTING CAPACITY - LBS	MINIMUM PARTS OF LINE	MAXIMUM HOISTING DISTANCE - FEET	
		FRONT DRUM	REAR DRUM
32,000	1	1,310	1,310

BOOM COMPOSITION CHART - 92HI OFFSET TIP						
BOOM LENGTH (FEET)	BOOM SECTIONS					
	25' 92HI INNER	15' 92HT CENTER	20' 92HT CENTER	10' 92ST CENTER	50' 92ST CENTER	40' 92H OUTER
100	1	1	1	0	0	1
110	1	1	1	1	0	1
120	1	1	1	2	0	1
130	1	1	0	0	1	1
140	1	1	0	1	1	1
150	1	1	1	0	1	1
160	1	1	1	1	1	1
170	1	1	1	2	1	1
180	1	1	0	0	2	1
190	1	1	0	1	2	1
200	1	1	1	0	2	1
210	1	1	1	1	2	1
220	1	1	1	2	2	1
230	1	1	0	0	3	1
240	1	1	0	1	3	1
250	1	1	1	0	3	1
260	1	1	1	1	3	1
270	1	1	1	2	3	1
280	1	1	0	0	4	1

**CDAC**

16HL JIB COMPOSITION CHART								
JIB LENGTH (FEET)	20' 16HL INNER	10' 16HL CENTER	20' 16HL CENTER	20' 16HL OUTER	EFF. JIB WEIGHT (POUNDS)	JIB OFFSET "A" IN FEET		
						5°	15°	25°
40	1	0	0	1	1,500	4' 10"	10' 2"	15' 1"
50	1	1	0	1	2,050	5' 8"	12' 1"	18' 3"
60	1	0	1	1	2,600	6' 6"	13' 10"	21' 2"
70	1	1	1	1	3,150	7' 1"	15' 10"	24' 4"
80	1	0	2	1	3,700	7' 9"	17' 8"	27' 4"
90	1	1	2	1	4,350	8' 4"	19' 7"	30' 7"
100	1	0	3	1	4,950	9' 0"	21' 4"	33' 6"

