

CRANE SPECIFICATION

Please find below crane specification.

	DESCRIPTION	
1	Make, model and country of origin.	LIEBHERR LHM 1300 Litronic Manufactured in Austria
2	Maximum capacity at all spreader positions	35.0t @ 32m, 19.1t @ 45m
3	Overall length	20.25m (66.1m boom down)
4	Overall height	60.5m
5	External Width (Outriggers extended & retracted)	13.8m (12.0m Retracted)
6	Maximum lift height under spreader	39 m approximately
7	Maximum lowering height below wharf level.	10m approximately
8	Minimum and maximum outreach	3.9m - 37.8m
9	Spreader side shift balancing distance	1200mm (10% imbalance 40')
10	Spreader rotation angle	Unlimited
11	Minimum turning circle	8.8m (Inner)
12	Axle loadings of unloaded crane	53 tonne
13	Outrigger pad loadings under maximum loading	178 t (static) 230 t (dynamic)
14	Total weight of machine – laden and unladen	327 t
15	Hoisting speeds – laden and unladen	27 m/min @ 52 t, 90 m/min @ 10 t
16	Travel speeds – laden and unladen	40.8 m/min (5 km/h)
17	Maximum gradability – unladen	10%
18	Maximum operational wind speed	20 m/min
19	Make and model of engine	Mercedes Benz OM 444 LA
20	Engine capacity and rated output	491 kw @ 1900 RPM
21	Fuel tank capacity & approx. Running time	3660 l, 130 running Hours
22	Make and model of transmission	Hydraulic Drive System
23	Make of principal hydraulic components	Rexroth
24	Make of hoist ropes used	Original Manufacturer
25	Make and details of braking system	Air over Hydraulic
26	Tyre sizes, options and recommended pressures	14.00 – 24 Michelin XVC 10 bar
27	Sales records of similar machines	Established global supplier

4. TECHNICAL DESCRIPTION

4.1. TECHNICAL DATA

4.1.1. DIMENSIONS AND WEIGHT

Length of undercarriage:	17,80 m
Width of crane with folded outriggers:	4,76 m
Height of crane with erected tower:	28,10 m
Height of crane with horizontal tower:	6,95 m
Outrigger support area:	19,35 x 14,30 m
Weight of crane:	307 tonnes (fully rigged with spreader)

4.1.2. ENGINE

Manufacturer:	Daimler Benz industrial engine turbo charged (intercooler)
Type:	OM 444 LA
Number of cylinders:	12
Max. output (IFN rating):	491 kW at 1900 rpm
Cooling:	Water
Air cleaner:	Dry – type

4.1.3. PUMP DRIVE TRANSMISSION

Two transmission gearboxes to drive 17 hydraulic pumps:

- 2 pumps for hoisting
- 3 pumps for slewing
- 2 pumps for luffing
- 1 pump for generator
- 2 pumps for power steering
- 7 pumps for oil cooler and general supply

4.1.4. ROTARY CONNECTION

17 way connection to supply the hydraulic and pneumatic consumers on the undercarriage (hydraulic rotary connector). 64 way connection to supply all electric consumers on the undercarriage (slip ring connector).

4.1.5. TRAVEL GEAR

Constant delivery hydraulic motors at axle 2,3 and 4 powered by three hydraulic pumps (hoisting pumps and one slewing pump) of the central power pack.

Axles:	Axles 1, 5, 6	steered, non – driven
	Type:	L 91
	Manufacturer:	Kessler & Co
	Axles 2, 3, 4	Planetary hub, steered
	Type:	LT 91 V PL 300
	Manufacturer:	Kessler & Co

4.1.6. SUSPENSION

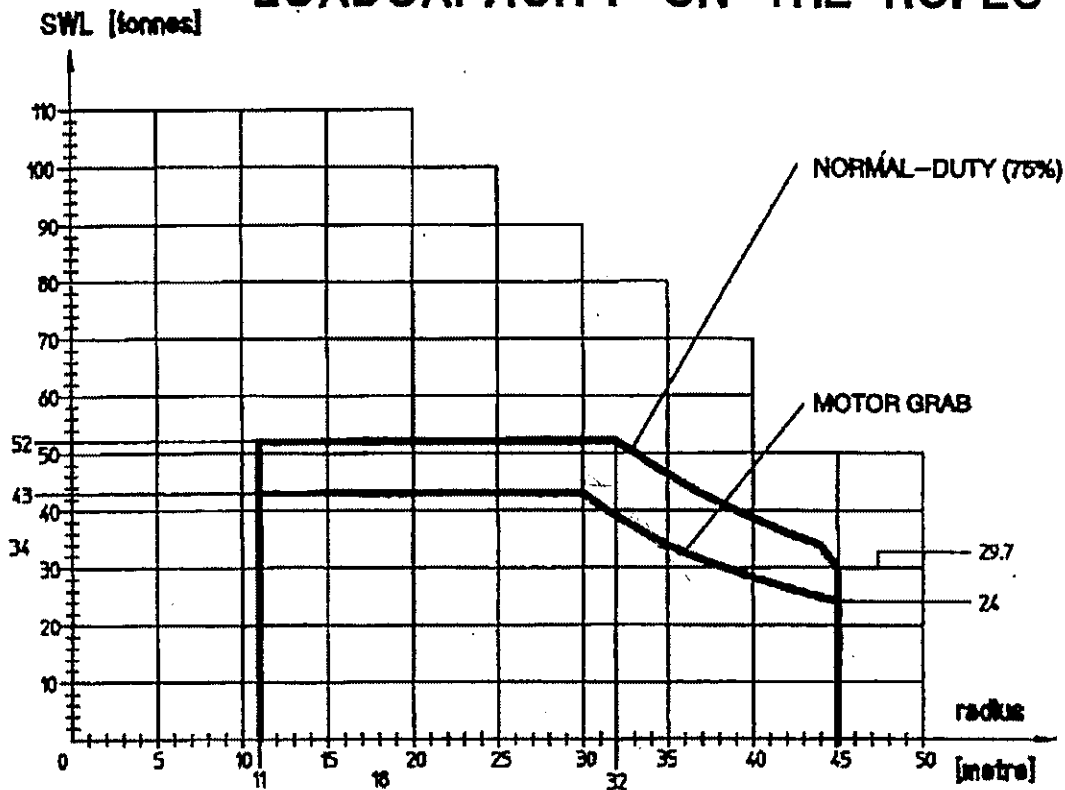
Axles 1, 2, 3 and 4, 5, 6 are linked together by swing beams with axle equalisation.

4.1.7. TYRES

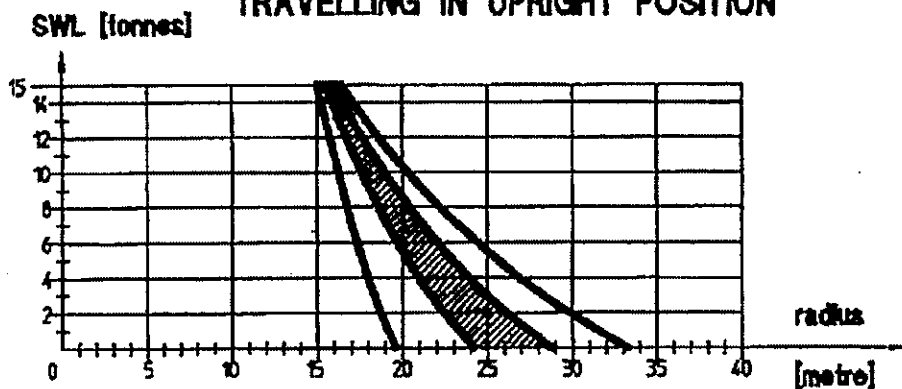
All axles:	Twin tyres
Tyre size:	14.00 – 24, Micheline XVC
Tyre pressure:	10 bar

LIEBHERR HARBOUR MOBILE CRANE TYPE LHM 1300 Litronic

LOADCAPACITY ON THE ROPES



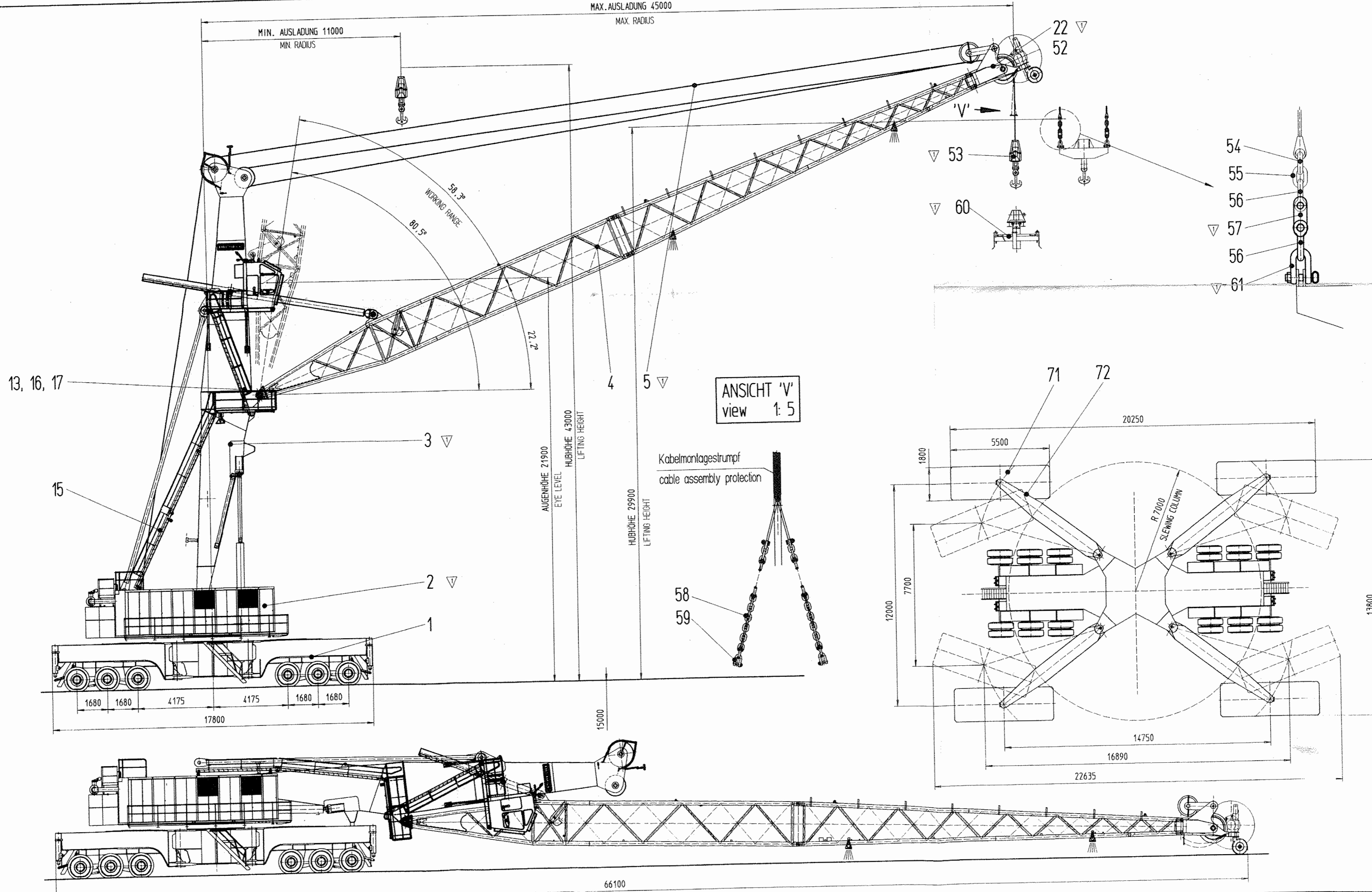
TRAVELLING IN UPRIGHT POSITION



This Chart taken from Liebherr Operation / Maintenance Volume 1 - Section 2.4

MAX. AUSLADUNG 45000
MAX. RADIUS

MIN. AUSLADUNG 11000
MIN. RADIUS



POS. 6 ANBAU AUSLEGER
assembly jib

POS. 7 ANBAU TURM
assembly tower

POS. 8 ANBAU HALTESTANGEN
assembly tie-rod

POS. 9 EINBAU DREHDURCHFÜHRUNG
assembly stipring-collector

POS.10 ANBAU AUFRICHTZYLINDER
assembly erection-cylinder

POS.11 WERKZEUG
tools

POS.12 BESCHILDERUNG
name plates

POS.14 WINDENGETRIEBEKÜHLUNG
rope gear oilcooler

POS.18 REIFENAUFFPUMPEINRICHTUNG
tire inflator equipment
IN SCHALTSCHRANKENRAUM BEFESTIGEN
TO FIT IN THE SWITCH CABINET

POS.200-1000 KUNDENSPEZ. NACHRÜSTSÄTZE
customer specific equipments

WENDERADIUS: AUSSEN R = 16000
INNEN R = 7500

TURNING RADIUS: OUTSIDE R = 16000
INSIDE R = 7500

LHM 1300
SOUTH PORT NEW ZEALAND
2565-000.00.00.000-001

0140 065 14 1/1 A1 363700K

94.06.16 94.12.21 94.12.21	PICHLER MALIN MALIN	CAD hp	1
----------------------------------	---------------------------	-----------	---