

**FEATURES:** Design and mechanical characteristics especially combined for the sign serving industry. Wilkie Mfg. Inc. utilizes stock commercial components in the fabrication of its products, ensuring you of readily available parts. The rugged features, reliable operation and simple maintenance make Wilkie cranes profitable for their owners. We offer a full set of optional equipment to complete your package, so it is immediately ready to put to work upon arrival at your plant.

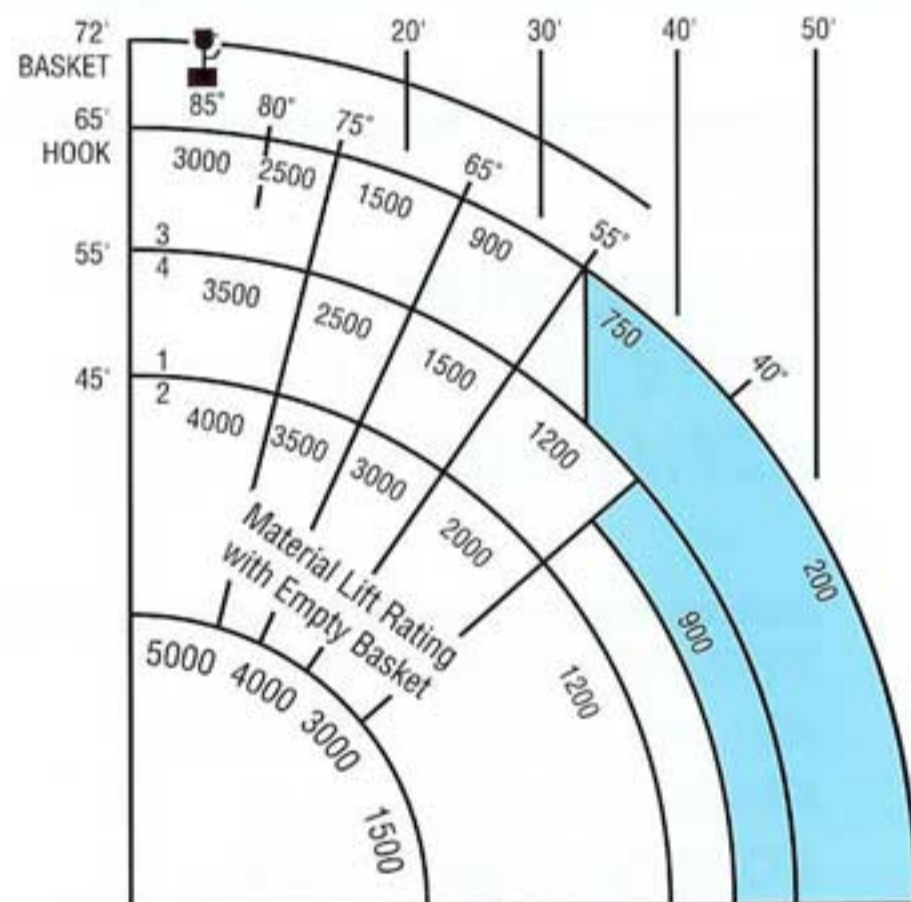
- ★ Full Remote control at workman's basket of elevation, extension, rotation, engine throttle and engine start/stop.
- ★ All 3 functions will operate at same time and at full speed
- ★ Full power retraction at any angle
- ★ All hydraulic powered for smooth precise, control
- ★ All square tube boom for increased rigid support
- ★ 1 Man work basket-standard-steel frame, hydraulic cylinder, self-leveling (2 man option)
- ★ Quick connect load line to convert from personnel lift to material lifting
- ★ 360° non-continuous rotation   ★ Option for continuous rotate
- ★ 4 Section aluminum ladders attached to boom   ★ Option
- ★ Wide spread Hydraulic outriggers or Manual or Manual/Hydraulic split.   ★ 3 options
- ★ Optional welding leads from base to basket
- ★ Optional 110v remote cord from base to basket
- ★ Ball bearing slewing ring turntable
- ★ Rotation drive, totally enclosed with adjustment collar for exacting mesh to bull gear.
- ★ Rotation motor direct coupled to Gear Box
- ★ All functions pressure relieved for a balanced system
- ★ Single stage cylinder elevation, double acting, power down, pressure relieved
- ★ Single stage cylinder main extension, double acting, power retracting.

**MINIMUM TRUCK SPECIFICATIONS:**

9,000 lb. Front axle, 17,000 Rear axle  
 25,950 G.V.W.: 120"C.A.: 189" W.B.  
 Outriggers Stabilizers required.

**NON INSULATED**

**STATE & FEDERAL REGULATIONS REQUIRE CERTAIN CLEARANCES OF ELECTRICAL POWER LINES.**



DO NOT OPERATE IN SHADED AREA WITH PERSONNEL IN BASKET OR ON BOOM

Do not hoist material with personnel in basket

Basket Capacities  
 1 Man 350 lbs.  
 2 Man 600 lbs.