



HT50KX

FEATURES

- * 8,000 lb. Maximum Lifting Capacity
- * 50,000 ft.-lb. Moment Rating
- * Fully Hydraulic Power
- * Hexagonal Boom Construction
- * 400° Power Rotation
- * Meets ANSI B30.5 Safety Standards
- * Meets OSHA 1910.180 Requirements

HT50KX-P, Standard Feature Group:

- * Proportional Control Valve
- * Pendant with Variable Speed Trigger Switch
- * Fully hydraulic boom extension 10-20 ft.
- * High Speed Winch: 60 ft./min.
- * Hydraulic Requirements: 12 GPM, 25 gal. Reservoir

HT50KX, Basic Feature Group Available At Significant Savings:

- * Non-proportional Valve Control
- * Pendant with Pre-Set Speed Toggle Switches
- * Single-Stage Hydraulic Extension 10-16 ft.
- * Manual Boom Extension 16-20 ft.
- * Winch Speed: 18 ft./min.
- * Hydraulic Requirements: 3 GPM, 10 gal. Reservoir

MINIMUM REQUIREMENTS

- * 20,500 lb. GVWR Chassis
- * Outriggers: Front and Rear
- * PTO, Pump and Reservoir

| LIFTING CAPACITIES | |
|--------------------|-----------------|
| REACH (FT.) | CAPACITY (LBS.) |
| 6 | 8,000 |
| 10 | 5,000 |
| 16 | 3,100 |
| 20 | 2,500 |

STANDARD EQUIPMENT

- * Capacity Overload Shut-Off System
- * Anti-Two-Blocking System
- * 100 ft. of 3/8" Aircraft-Quality Wire Rope
- * Remote Control Pendant: 25 ft. Cord and Quick Disconnect
- * Snatch Block with Swivel Hook Safety Latch

OPTIONAL EQUIPMENT

- * Radio Remote Controls
- * Hydraulic and Manual Outrigger Packages
- * Hydraulic Pumps and Reservoirs
- * Mounting Pedestal for Platform Bodies
- * Boom Rests
- * Cable Overhaul Weight

Specifications subject to change without notice.



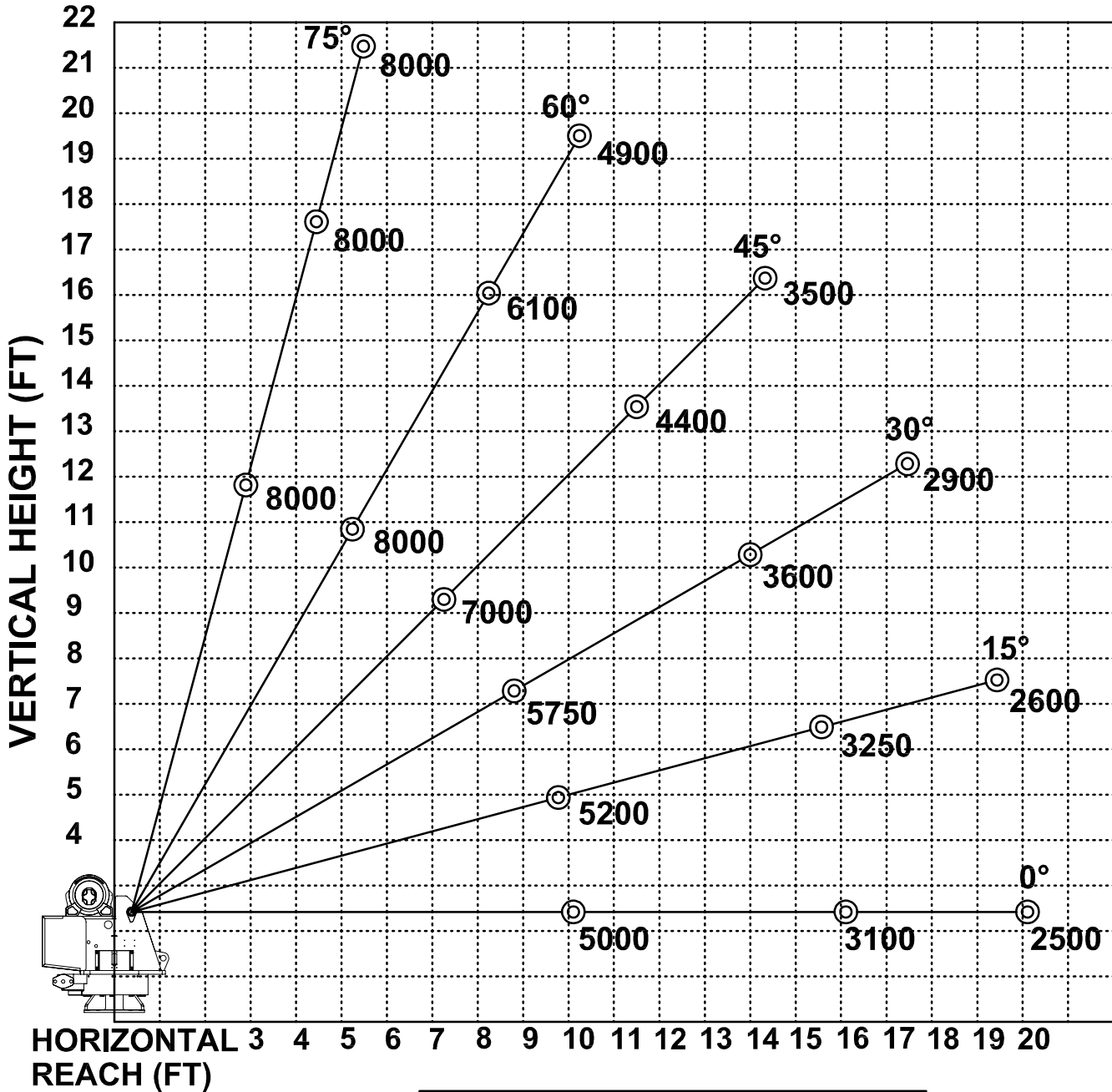
RUGGED. RELIABLE. REAL.

12110 Best Place Cincinnati, OH 45241
 800-226-2238 internetsales@venturo.com
 www.venturo.com

DISTRIBUTED BY:



HT50KX - 10-16-20 BOOM MAXIMUM CAPACITY CHART



**MUST USE SNATCH BLOCK
FOR LOADS OF 4000 LBS.
AND GREATER**



HT50KX-25

FEATURES

- * 8,000 lb. Maximum Lifting Capacity
- * 50,000 ft.-lb. Moment Rating
- * Fully Hydraulic Power
- * Hexagonal Boom Construction
- * Fully Hydraulic Boom Extension 12'-24'10"
- * High Speed Winch: 60 ft./min.
- * 400° Power Rotation
- * Meets ANSI B30.5 Safety Standards
- * Meets OSHA 1910.180 Requirements

STANDARD EQUIPMENT

- * Capacity Overload Shut-Off System
- * Anti-Two-Blocking System
- * 100 ft. of 3/8" Aircraft-Quality Wire Rope
- * Remote Control Pendant: 25 ft. Cord and Quick Disconnect
- * Snatch Block with Swivel Hook Safety Latch

MINIMUM REQUIREMENTS

- * 20,500 lb. GVWR Chassis
- * Outriggers: Front and Rear
- * Hydraulic and Manual Outrigger Packages
- * Hydraulic Requirements: 12 GPM, 25 gal. reservoir

| LIFTING CAPACITIES | |
|--------------------|-----------------|
| REACH (FT.) | CAPACITY (LBS.) |
| 6 | 8,000 |
| 12 | 4,200 |
| 18.5 | 2,675 |
| 24' 10" | 2,000 |

OPTIONAL EQUIPMENT

- * Radio Remote Controls
- * Hydraulic and Manual Outrigger Packages
- * Hydraulic Pumps and Reservoirs
- * Mounting Pedestal for Platform Bodies
- * Boom Rests
- * Cable Overhaul Weight

Specifications subject to change without notice.

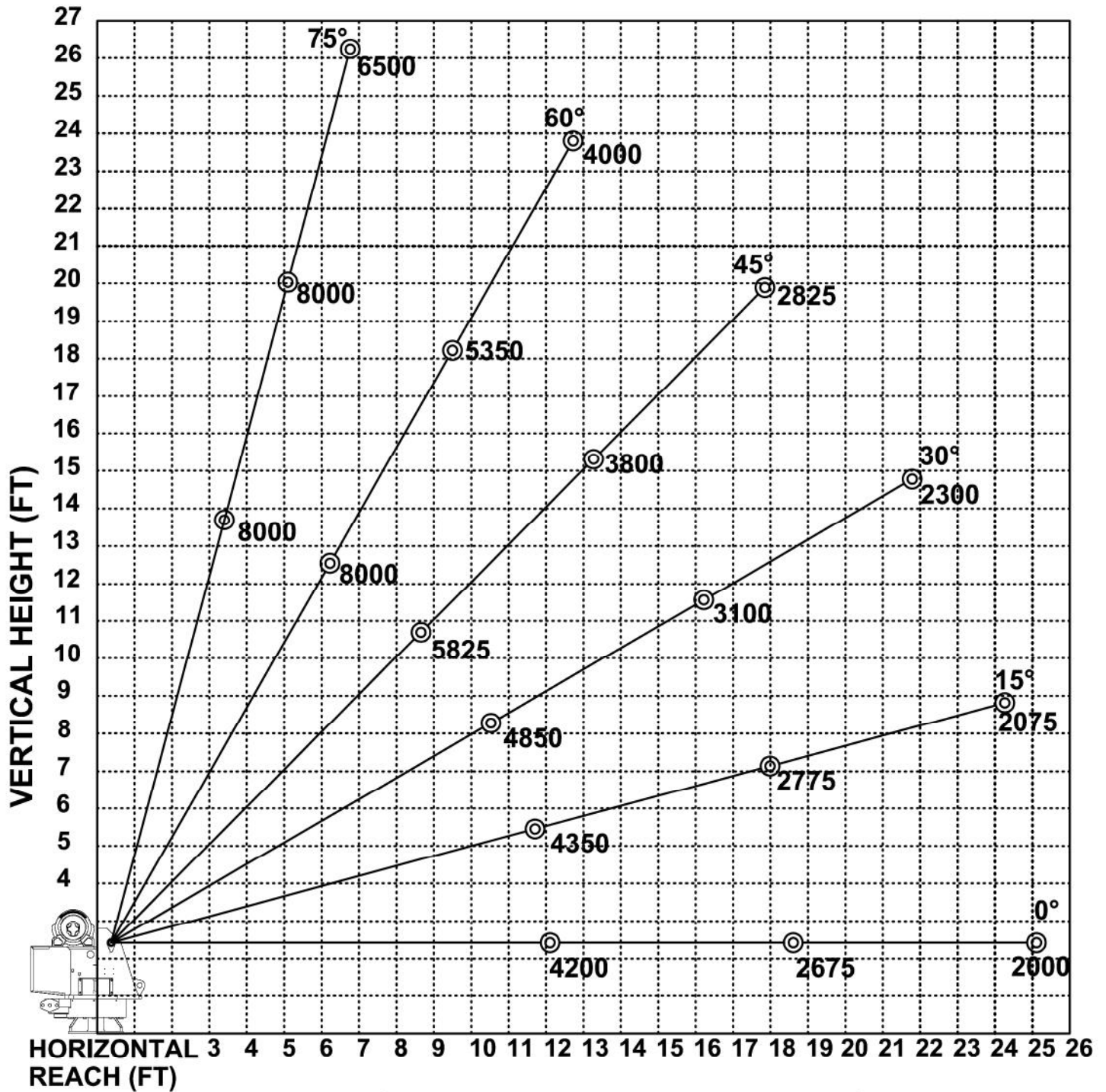


12110 Best Place Cincinnati, OH 45241
 800-226-2238 internetsales@venturo.com
www.venturo.com

DISTRIBUTED BY:



HT50KX - 12-18.5-25 BOOM MAXIMUM CAPACITY CHART



**MUST USE SNATCH BLOCK
FOR LOADS OF 4000 LBS.
AND GREATER**