

FREEDOM 60/36

TRUCK MOUNTED AERIALWORK PLATFORM



64' Max. Working Height

Horizontal Reach

500 lbs @ 28' (2) persons
300 lbs @ 36' (1) person

Spacious 55" x 31" Working Basket

Flexible 90 deg. Basket Rotation - 45L/45R

Complete Up-Over-Down full Working Range

Highly Mobile, Quick Job Site Set up

**Non CDL Vehicle Requirement,
No Delivery Charges**

Mount on truck of your choice

**Perfect for Short Term Rentals
and Multiple Job Sites**

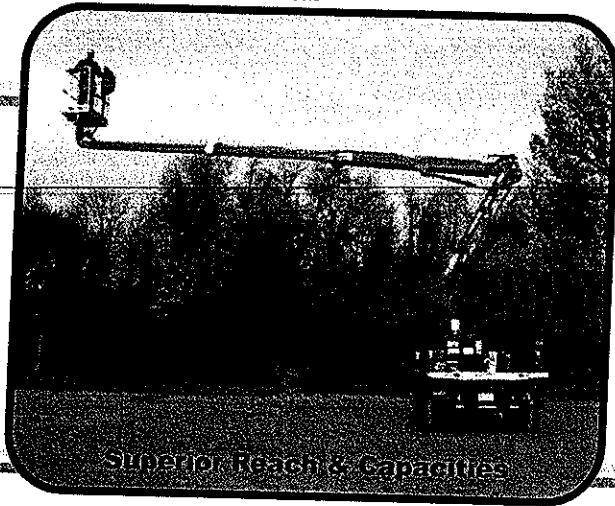
4517 North Point Blvd.
Baltimore, Maryland 21219
410-388-9144 / 800-632-7226





FREEDOM 60/36

Truck Mounted Aerial Work Platform



Superior Reach & Capacities

SPECIFICATIONS

Working Height - 64 feet
Platform Height - 58 feet

CAPACITIES

500 lbs at 28 feet (2) persons
300 lbs at 36 feet (1) person

STANDARD FEATURES

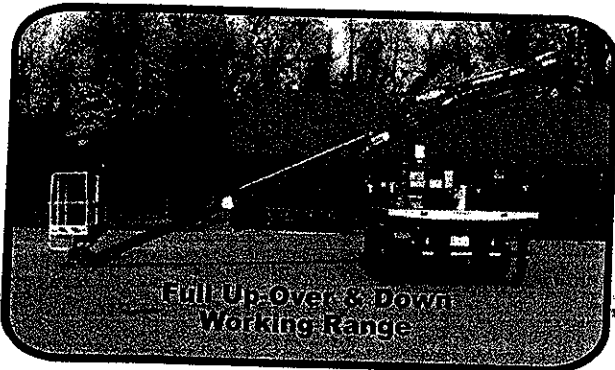
- Non-Skid rigid steel deck on sub frame assembly
- Level indicators for quick out-rigger set up in Working modes
- 90 degree platform rotation - 45 right and 45 left
- Riser height of 19'- 8"
- Non Continuous 700 degree upper turret Rotation (two revolutions)
- 110 volt wiring to platform for power tool operation
- Electrical Emergency lowering and function capability
- Deadman safety pedal in platform
- Proportional Joystick controls in platform
- Lower control station with full hydraulic functions
- Engine - start/stop switch in platform



Non CDL Vehicle Requirements

OPTIONS

- Welding Leads to Platform
- Air Lines to Platform



Full Up, Over & Down Working Range

PERFORMANCE FEATURES

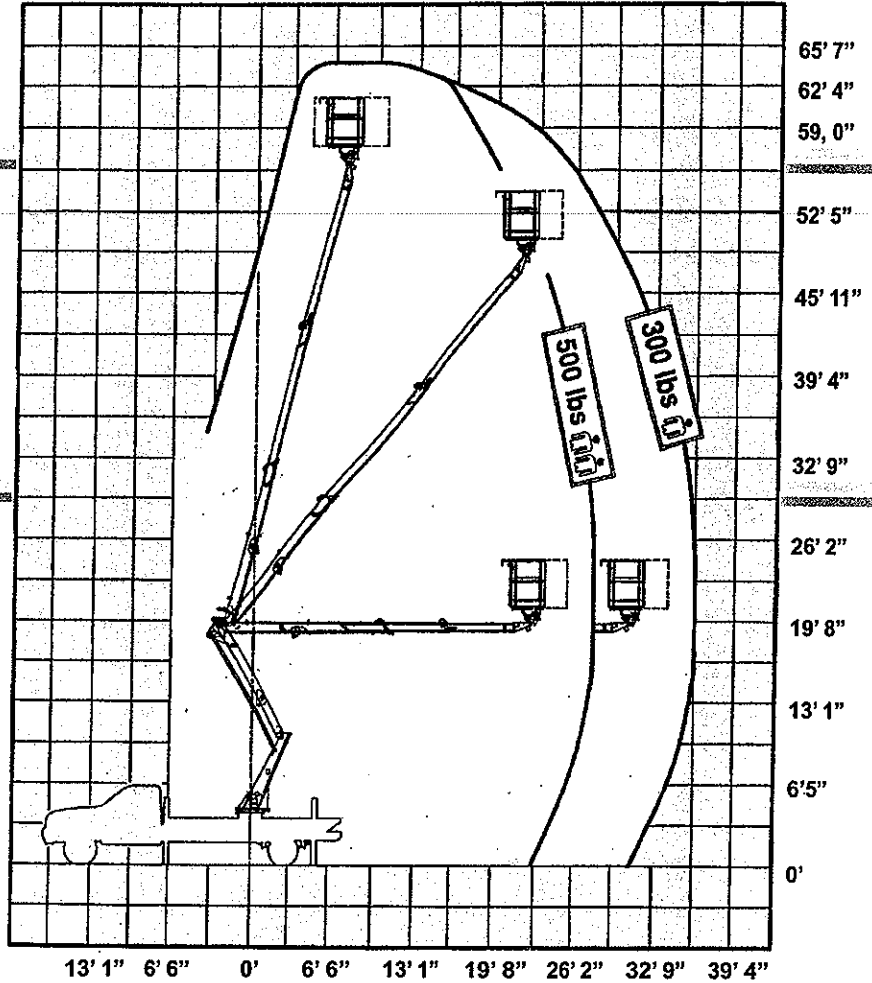
- Highly Mobile unit featuring highway speeds for quick set ups and job site accessibility
- Unsurpassed versatility with up, over and down working ranges to 64'
- Ideal for multiple job sites or short term rentals
- No pick up or delivery charges
- Non CDL vehicle requirements - under #28,000 GVW
- Allows operator total FREEDOM in job site transportation and set up
- Trucks Include: FORD F450/550 and ISUZU NPR series Cab Over



FREEDOM 60/36

Aerial Work Platform

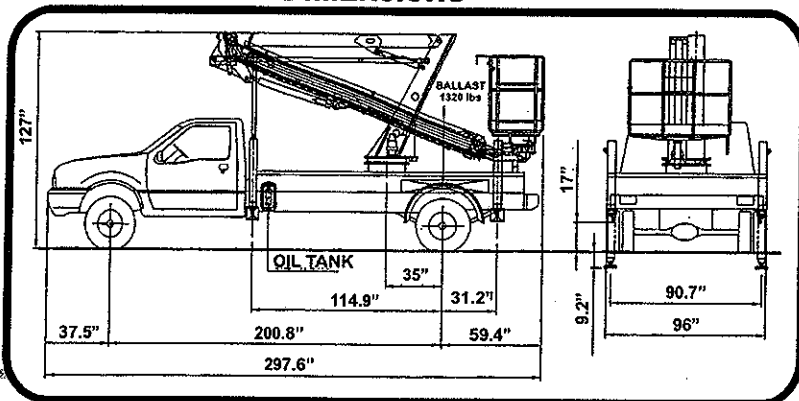
WORKING RANGE



Trucks Include:
FORD F450/550 and
ISUZU NPR series
 Cab Over

FORD TRUCK
SHOWN

DIMENSIONS



AXLE WEIGHTS:

Front - 5600 lbs
 Rear - 11000 lbs
 GVW 15000 lbs

Non CDL
Vehicle Requirement