

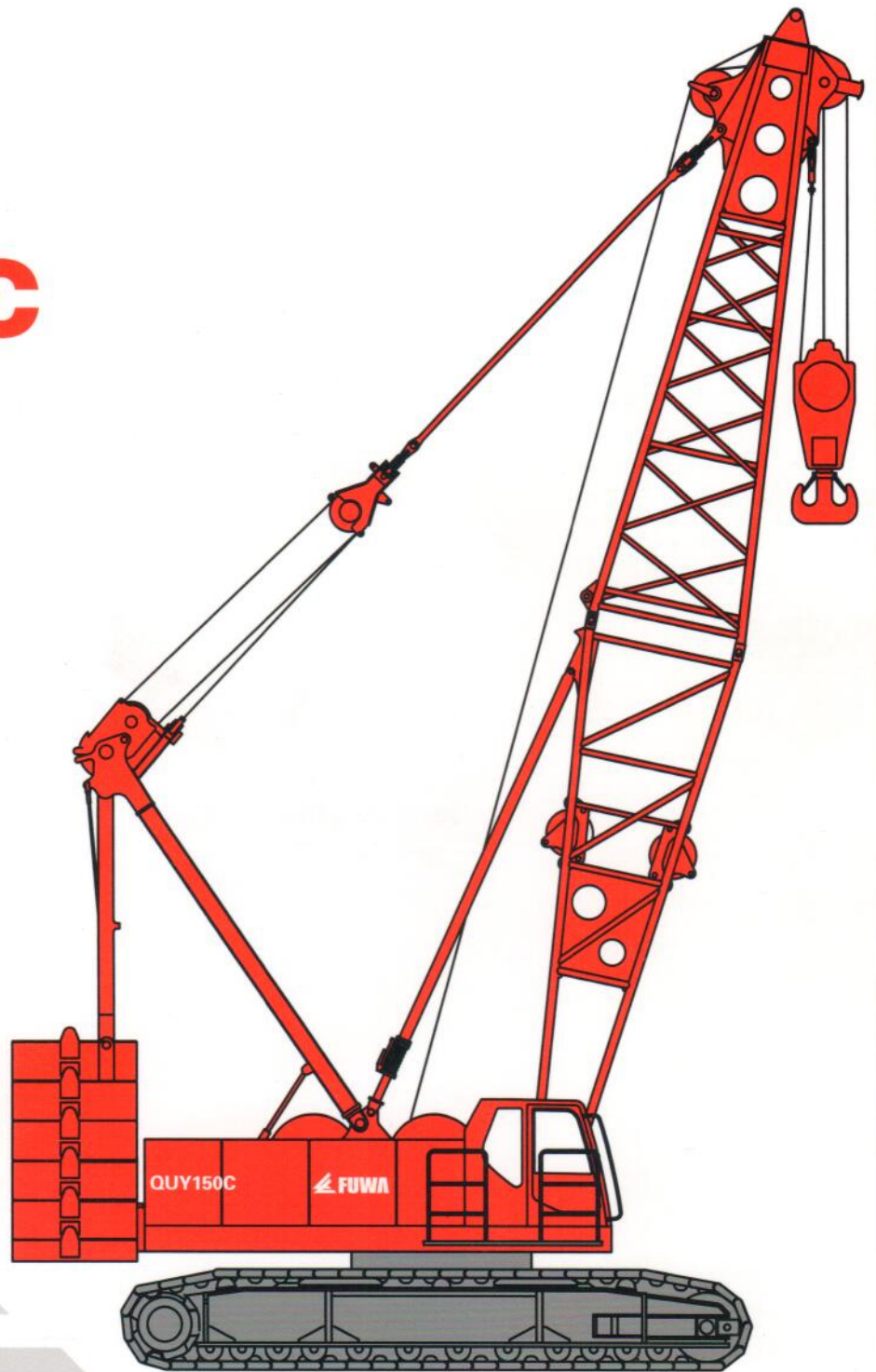
**FUWA HEAVY INDUSTRY CO. LTD.**

# **QUY150C**

**Hydraulic Crawler Crane**

-Fuwa Series Crawler Cranes-

**150 mt** lifting capacity

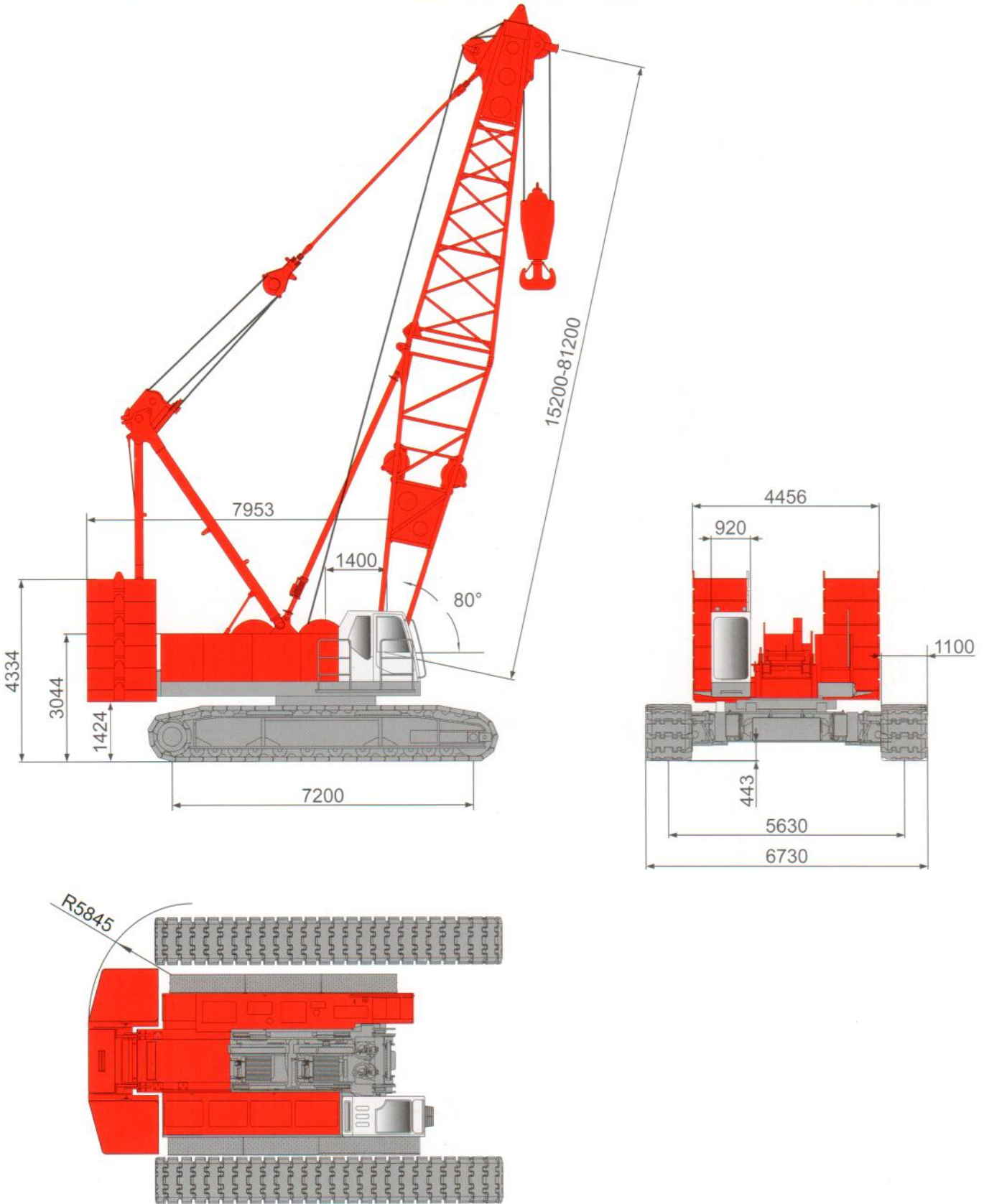


 **FUWA**

## Technical Data

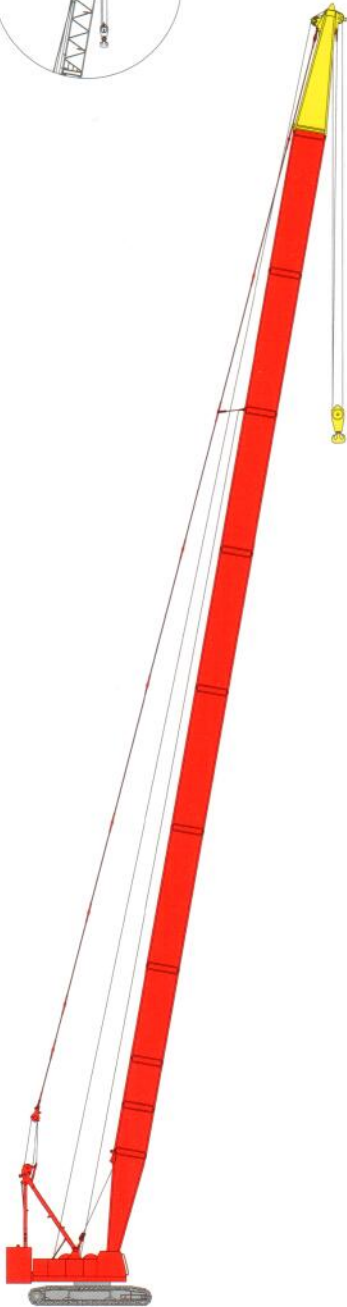
Items		Unit	Data	
Max.rated lifting capacity		t	150	
Main boom length		m	18.2~81.2	
Fly jib length		m	13~31	
Main boom+Fly jib max.length		m	69.2+31	
Main boom+Luffing jib max.length		m	54.2+52	
Boom derricking angle		°	30~80	
Hook blocks		t	150/120/50/25/15	
Working speed	Rope speed	Main winch hoist/drop (rope dia.Φ 26mm)	m/min	High speed 117 - 142
		Aux. winch hoist/drop (rope dia.Φ 26mm)	m/min	High speed 117 - 142
		Boom hoist/drop (rope dia.Φ 22mm)	m/min	30
	Swing speed		r/min	0~2.3
	Travel speed		km/h	0.63~1.25
Reevings			16	
Single pull		t	13.5	
Gradeability		%	30	
Engine		kW/r/min	209/2000 (Domestic)	
Swing radius		mm	5845	
Transport dimension		mm	9750 × 3380 × 3580	
Crane mass (with basic boom, 150t hook)		t	160	
Ground bearing pressure		MPa	0.092	
Counterweight		t	64	

**Overall Dimension**



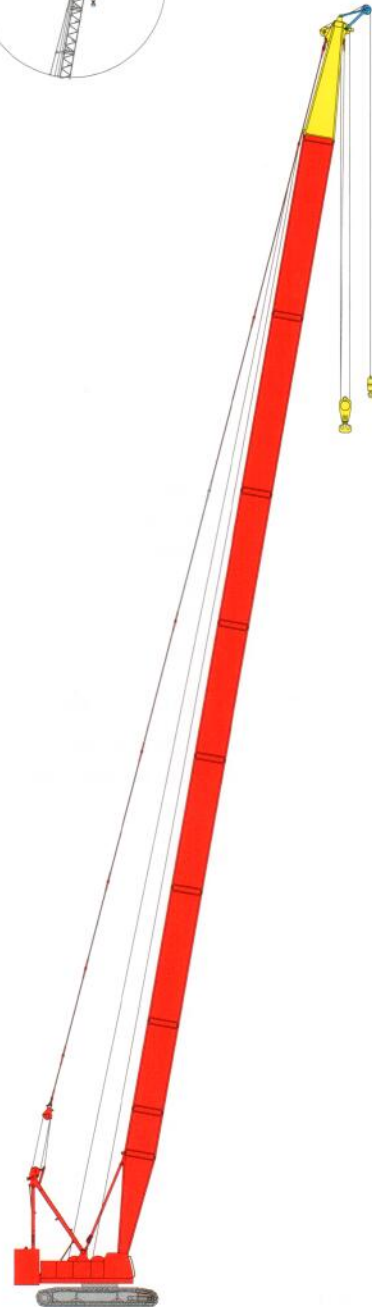
# Machine Configurations

Main boom  
Max.lifting capacity:150t×6m  
Max.boom length: 81.2m



Boom : 15.2m-81.2m

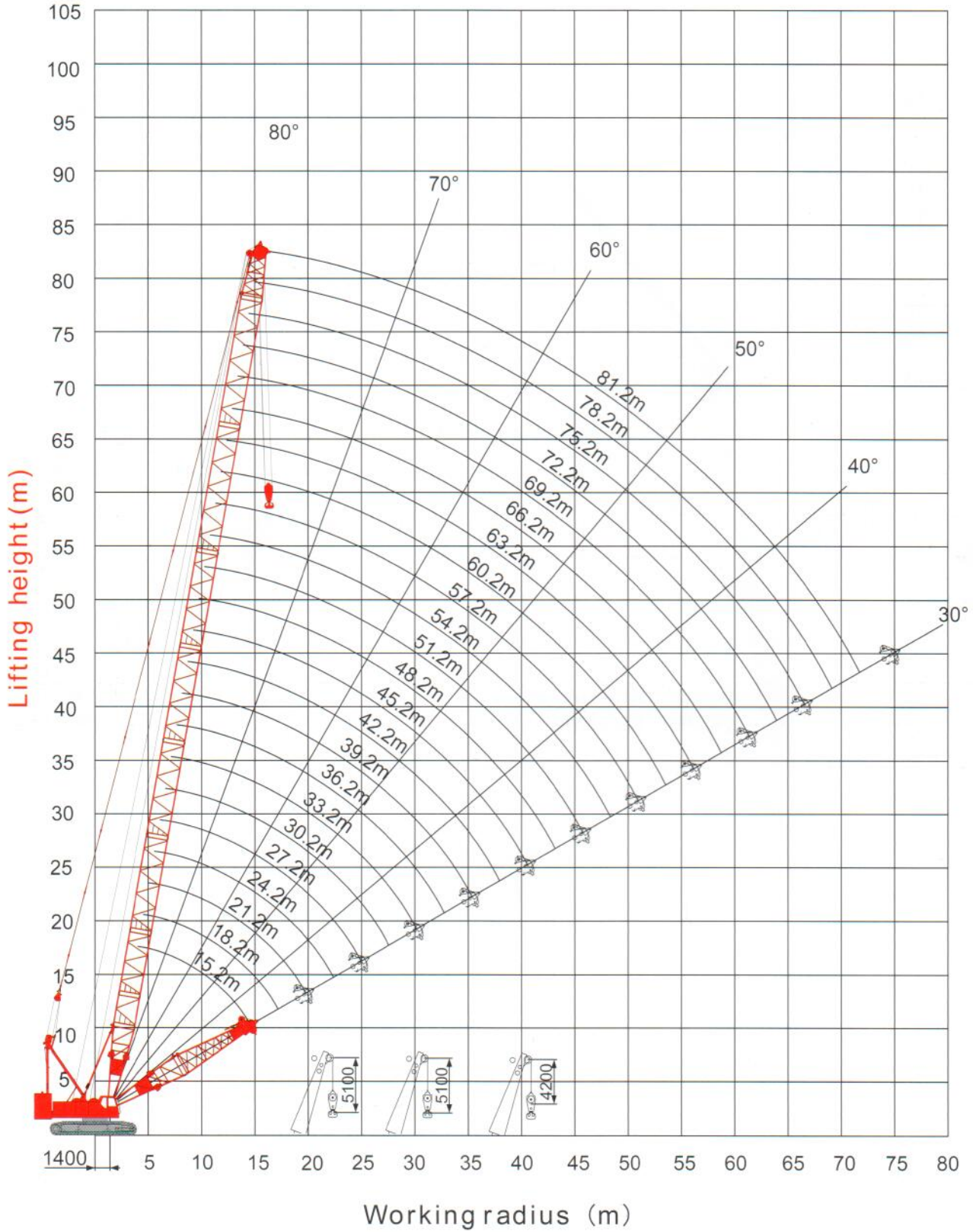
Runner  
Max.lifting capacity: 12.5t×36m  
Max.boom length: 81.2m



Boom : 21.2m-81.2m

# Working Range H

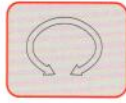
Working range of main boom (H)



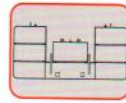
# Rated Lifting Capacity Load Chart H



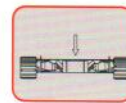
15.2m-81.2m



360°



64t



10t

Length Radius	15.2m	21.2m	27.2m	33.2m	39.2m	45.2m	51.2m	57.2m	63.2m	69.2m	75.2m	81.2m
4.0m	4.6/150											
5.0m	150	5.6/150										
6.0m	143	142.6	6.7/126.0									
7.0m	120	119.5	119.1	7.7/106.4								
8.0m	103.2	102.8	102.4	102	8.7/89.5							
9.0m	90.5	90.1	89.7	88.7	86.1	9.8/74.7						
10.0m	80	79.7	78.7	76.7	74.4	72.6	10.8/63.6					
11.0m	69.9	69.5	69.2	67.5	65.5	63.9	62.3	11.9/52.3				
12.0m	61.9	61.6	61.3	60.1	58.4	57	55.6	52.1	12.9/42.2			
13.0m	55.6	55.2	54.9	54.2	52.7	51.4	50.2	48.5	42.1	14.0/34.0		
14.0m	50.3	50	49.6	49.2	47.9	46.8	45.6	44.1	41.2	33.9	15.0/27.0	
15.0m	14.8/46.7	45.6	45.2	44.8	43.9	42.9	41.8	40.4	39.3	33.1	27	
16.0m		41.9	41.5	41.1	40.5	39.5	38.6	37.3	36.2	32.3	26.4	16.0/21.3
18.0m		35.9	35.6	35.1	34.8	34.1	33.3	32.1	31.2	29.9	25.2	20.3
20.0m		31.4	31	30.6	30.3	30	29.1	28.1	27.3	26.2	24.2	19.3
22.0m			27.4	26.9	26.6	26.3	25.8	24.9	24.1	23.1	22.5	18.6
24.0m			24.4	24	23.7	23.4	23	22.3	21.5	20.6	20	17.8
26.0m			25.2/22.9	21.5	21.2	20.9	20.6	20.1	19.4	18.5	17.9	17.1
28.0m				19.5	19.2	18.9	18.5	18.1	17.5	16.7	16.1	15.5
30.0m				17.7	17.4	17.1	16.7	16.3	15.9	15.1	14.6	14
34.0m					14.6	14.3	13.9	13.5	13.1	12.6	12.1	11.5
38.0m						12.1	11.7	11.3	10.9	10.5	10.1	9.6
42.0m							10	9.6	9.1	8.7	8.4	8
46.0m							8.6	8.1	7.7	7.3	7	6.6
50.0m								6.9	6.5	6.1	5.8	5.4
54.0m									5.5	5.1	4.8	4.4
58.0m										4.3	3.9	3.5
62.0m										61.6/3.6	3.2	2.8
66.0m											2.5	2.1
70.0m												1.6