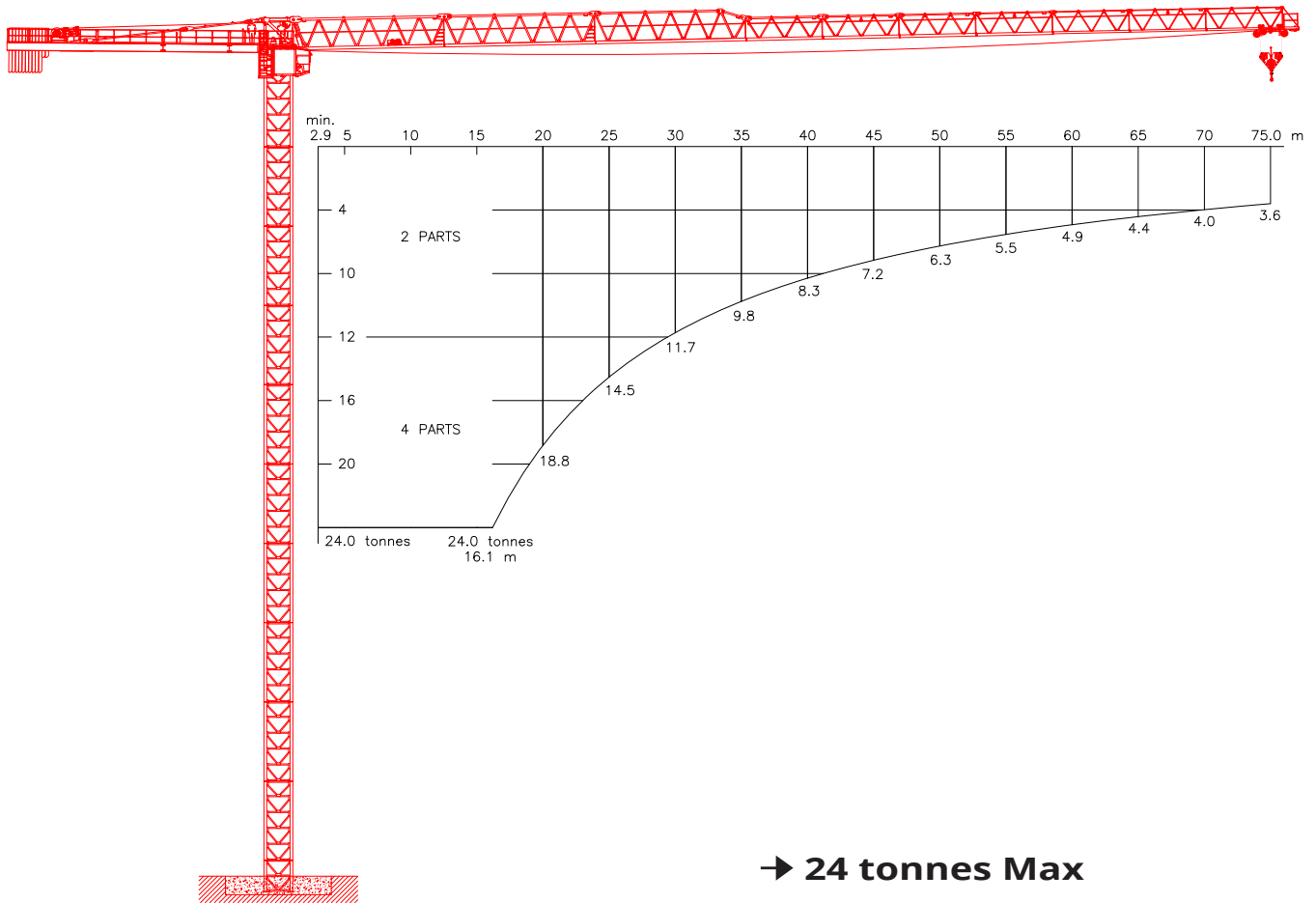




KROLL CRANES



F.E.M 1.001-HC1/A3/E3

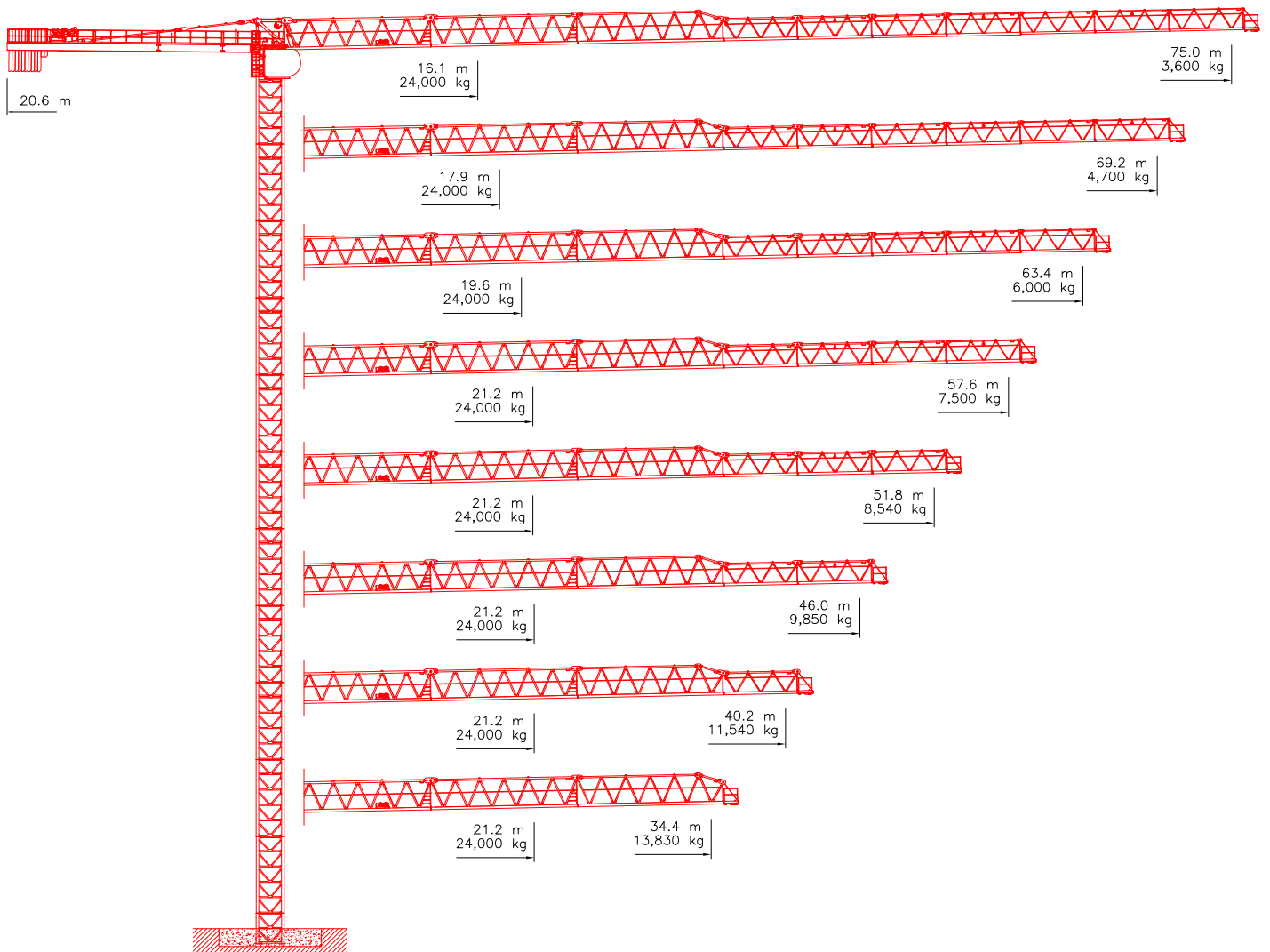


FLAT TOP TOWER CRANE

K430F

24 tonnes Max



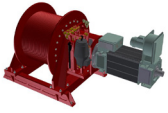
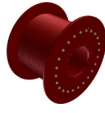
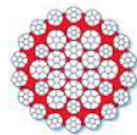

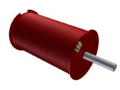
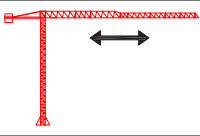


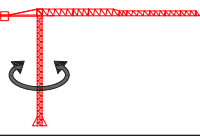


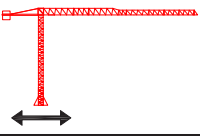
JIB CONFIGURATIONS





LOAD CHARTS

Radius	Jib Length															
	75.0 m		69.2 m		63.4 m		57.6 m		51.8 m		46.0 m		40.2 m		34.4 m	
	4 parts	2 parts	4 parts	2 parts	4 parts	2 parts	4 parts	2 parts	4 parts	2 parts	4 parts	2 parts	4 parts	2 parts	4 parts	2 parts
[m]	[kg]	[kg]	[kg]	[kg]	[kg]	[kg]	[kg]	[kg]	[kg]	[kg]	[kg]	[kg]	[kg]	[kg]	[kg]	[kg]
16.0	24,000	12,000	24,000	12,000	24,000	12,000	24,000	12,000	24,000	12,000	24,000	12,000	24,000	12,000	24,000	12,000
17.0	22,540	12,000	24,000	12,000	24,000	12,000	24,000	12,000	24,000	12,000	24,000	12,000	24,000	12,000	24,000	12,000
18.0	21,110	12,000	23,780	12,000	24,000	12,000	24,000	12,000	24,000	12,000	24,000	12,000	24,000	12,000	24,000	12,000
19.0	19,830	12,000	22,350	12,000	24,000	12,000	24,000	12,000	24,000	12,000	24,000	12,000	24,000	12,000	24,000	12,000
20.0	18,700	12,000	21,080	12,000	23,450	12,000	24,000	12,000	24,000	12,000	24,000	12,000	24,000	12,000	24,000	12,000
21.0	17,670	12,000	19,940	12,000	22,190	12,000	24,000	12,000	24,000	12,000	24,000	12,000	24,000	12,000	24,000	12,000
22.0	16,750	12,000	18,910	12,000	21,050	12,000	23,010	12,000	23,000	12,000	23,000	12,000	23,000	12,000	23,000	12,000
23.0	15,910	12,000	17,970	12,000	20,010	12,000	21,880	12,000	21,870	12,000	21,880	12,000	21,880	12,000	21,880	12,000
24.0	15,140	12,000	17,110	12,000	19,060	12,000	20,850	12,000	20,850	12,000	20,850	12,000	20,850	12,000	20,850	12,000
25.0	14,440	12,000	16,330	12,000	18,200	12,000	19,910	12,000	19,900	12,000	19,910	12,000	19,910	12,000	19,910	12,000
26.0	13,800	12,000	15,600	12,000	17,400	12,000	19,040	12,000	19,040	12,000	19,040	12,000	19,040	12,000	19,040	12,000
27.0	13,200	12,000	14,940	12,000	16,670	12,000	18,250	12,000	18,240	12,000	18,240	12,000	18,240	12,000	18,240	12,000
28.0	12,650	12,000	14,320	12,000	15,990	12,000	17,510	12,000	17,500	12,000	17,510	12,000	17,500	12,000	17,510	12,000
29.0	12,140	12,000	13,750	12,000	15,350	12,000	16,820	12,000	16,820	12,000	16,820	12,000	16,820	12,000	16,820	12,000
30.0	11,660	11,660	13,220	12,000	14,770	12,000	16,180	12,000	16,180	12,000	16,180	12,000	16,180	12,000	16,180	12,000
31.0	11,220	11,220	12,720	12,000	14,220	12,000	15,590	12,000	15,580	12,000	15,590	12,000	15,580	12,000	15,590	12,000
32.0	10,800	10,800	12,260	12,000	13,710	12,000	15,030	12,000	15,030	12,000	15,030	12,000	15,030	12,000	15,030	12,000
33.0	10,420	10,420	11,830	11,830	13,230	12,000	14,510	12,000	14,500	12,000	14,510	12,000	14,510	12,000	14,510	12,000
34.0	10,050	10,050	11,420	11,420	12,780	12,000	14,020	12,000	14,010	12,000	14,020	12,000	14,020	12,000	14,020	12,000
34.4	9,910	9,910	11,260	11,260	12,600	12,000	13,830	12,000	13,830	12,000	13,830	12,000	13,830	12,000	13,830	12,000
35.0	9,710	9,710	11,030	11,030	12,350	12,000	13,560	12,000	13,550	12,000	13,560	12,000	13,560	12,000		
36.0	9,380	9,380	10,670	10,670	11,950	11,950	13,120	12,000	13,120	12,000	13,120	12,000	13,120	12,000		
37.0	9,080	9,080	10,330	10,330	11,570	11,570	12,710	12,000	12,710	12,000	12,710	12,000	12,710	12,000		
38.0	8,790	8,790	10,010	10,010	11,220	11,220	12,330	12,000	12,320	12,000	12,320	12,000	12,320	12,000		
39.0	8,510	8,510	9,700	9,700	10,880	10,880	11,960	11,960	11,950	11,950	11,960	11,960	11,960	11,960		
40.0	8,250	8,250	9,410	9,410	10,560	10,560	11,610	11,610	11,610	11,610	11,610	11,610	11,610	11,610		
40.2	8,200	8,200	9,350	9,350	10,500	10,500	11,540	11,540	11,540	11,540	11,540	11,540	11,540	11,540		
41.0	8,010	8,010	9,140	9,140	10,250	10,250	11,280	11,280	11,280	11,280	11,280	11,280	11,280	11,280		
42.0	7,770	7,770	8,870	8,870	9,970	9,970	10,960	10,960	10,960	10,960	10,960	10,960	10,960	10,960		
43.0	7,550	7,550	8,620	8,620	9,690	9,690	10,660	10,660	10,660	10,660	10,660	10,660	10,660	10,660		
44.0	7,340	7,340	8,390	8,390	9,430	9,430	10,380	10,380	10,380	10,380	10,380	10,380	10,380	10,380		
45.0	7,130	7,130	8,160	8,160	9,180	9,180	10,110	10,110	10,100	10,100	10,110	10,110	10,110	10,110		
46.0	6,940	6,940	7,940	7,940	8,940	8,940	9,850	9,850	9,840	9,840	9,850	9,850				
47.0	6,750	6,750	7,730	7,730	8,710	8,710	9,600	9,600	9,590	9,590						
48.0	6,580	6,580	7,540	7,540	8,490	8,490	9,360	9,360	9,360	9,360						
49.0	6,410	6,410	7,350	7,350	8,280	8,280	9,130	9,130	9,130	9,130						
50.0	6,240	6,240	7,160	7,160	8,080	8,080	8,910	8,910	8,910	8,910						
51.0	6,090	6,090	6,990	6,990	7,880	7,880	8,700	8,700	8,700	8,700						
51.8	5,970	5,970	6,850	6,850	7,730	7,730	8,540	8,540	8,540	8,540						
52.0	5,940	5,940	6,820	6,820	7,700	7,700	8,500	8,500								
53.0	5,790	5,790	6,660	6,660	7,520	7,520	8,300	8,300								
54.0	5,650	5,650	6,500	6,500	7,350	7,350	8,120	8,120								
55.0	5,520	5,520	6,350	6,350	7,180	7,180	7,940	7,940								
56.0	5,390	5,390	6,210	6,210	7,020	7,020	7,760	7,760								
57.0	5,260	5,260	6,070	6,070	6,870	6,870	7,600	7,600								
57.6	5,190	5,190	5,990	5,990	6,780	6,780	7,500	7,500								
58.0	5,140	5,140	5,930	5,930	6,720	6,720										
59.0	5,030	5,030	5,800	5,800	6,580	6,580										
60.0	4,920	4,920	5,680	5,680	6,440	6,440										
61.0	4,810	4,810	5,560	5,560	6,300	6,300										
62.0	4,700	4,700	5,440	5,440	6,170	6,170										
63.0	4,600	4,600	5,330	5,330	6,050	6,050										
63.4	4,560	4,560	5,280	5,280	6,000	6,000										
64.0	4,500	4,500	5,220	5,220												
65.0	4,410	4,410	5,110	5,110												
66.0	4,320	4,320	5,010	5,010												
67.0	4,230	4,230	4,910	4,910												
68.0	4,140	4,140	4,810	4,810												
69.0	4,060	4,060	4,720	4,720												
69.2	4,040	4,040	4,700	4,700												
70.0	3,980	3,980														
71.0	3,900	3,900														
72.0	3,820	3,820														
73.0	3,740	3,740														
74.0	3,670	3,670														
75.0	3,600	3,600														

HOIST WINCH MOTOR 85 kW	2-PARTS 		4-PARTS 		
		Load 0 - 1.2 t 1.2 - 5.0 t 5.0 - 12.0 t	Max. Speed 136 m/min 74 m/min 34 m/min	Load 0 - 2.4 t 2.4 - 10.0 t 10.0 - 24.0 t	Max. Speed 68 m/min 37 m/min 17 m/min
	HOIST DRUM			HOIST WIRE	
	CAPACITY 550 m / 6 Layers			Diameter 20 mm	Safety Factor 5
	TROLLEY WINCH MOTOR 16 kW			TROLLEY DRUM CAPACITY 75 m / 1 Layer	
	TROLLEY SPEEDS			TROLLEY WIRE	
	0 - 24 t	0 - 70 m/min	Diameter 10 mm	Safety Factor 6	MBL 87 kN
	SLEW DRIVE Motor 3 x 10 kW			POWER SUPPLY 400 - 480 V, 50/60 Hz	
	SLEW SPEEDS			Consumption 150 kVA	Main Fuse 160 A
	0 - 24 t	0 - 0.6 rpm			
	UNDERCARRIAGE Motor 4 x 7 kW			SUPPLY CABLE	
	TRAVEL SPEEDS			Cable Length 0 - 175 m 175 - 250 m	Cable Type 4 x 70 mm ² 4 x 95 mm ²
	0 - 24 t	0 - 25 m/min			
All motion controls are completely stepless ensuring smooth and jerk-free operation. Creeping speed down to 0.5% of maximum speed.			All specifications shown in the tables are for the standard version of K430F. For special requirements regarding load charts or drive speeds, please contact Krøll Cranes A/S.		



KRØLL CRANES



KRØLL CRANES A/S
Nordkranvej 2
DK-3540 Lyngø
Denmark

Tel: +45 48 18 74 00
Mail: info@krollcranes.dk
Web: www.krollcranes.dk

