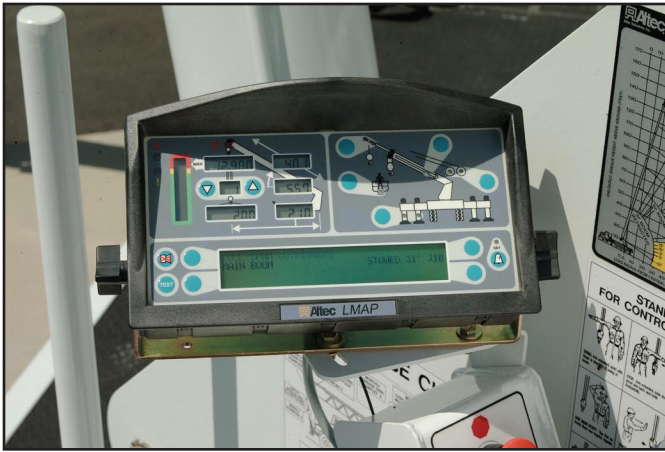


Attec AC38-103S-XHL Hydraulic Telescopic Crane



- 38 Ton (34.5 t)
- 103 ft (31.4 m), 4-Section Boom
- 113 ft (34.4 m) Sheave Height
- 168 ft (51.2 m) Sheave Height with 55 ft (16.8 m), 2-Piece Jib
- Altec LMAP (Load Moment & Area Protection) System
- Outrigger Boom Interlock System
- Winch Drum Rotation Indicator
- Optional 800 lb (363 kg) Capacity Personnel Platform
- Optional Radio Remote Controls
- Optional Platform Test Lift Package



Altec LMAP System

RECOMMENDED FEATURES

- Wheel Chocks
- Outrigger Pads
- Fall Protection System (with Platform)
- Radio Remote Control (with Platform)
- Platform Test Lift Package (with Platform)

OPTIONS

- 1-Piece 31 ft (9.4 m) Jib
- 2-Piece 55 ft (18.8 m) Jib, 31 ft (9.3 m) Retracted
- 2-Man Steel Platform
- Powered Cab Tilt (20°)
- Climate-Controlled Enclosed Cab
- Load Blocks for Multiple Parts of Line
- Hydraulic Tool Circuit at Tail Shelf
- Winch Control at Load Hook Stow Point
- Utility Tool Boxes
- Rotation Resistant Wire Rope
- Glide Swing
- Auxiliary Winch, 5000 lb (2250 kg) Capacity

STANDARD SAFETY FEATURES

- Altec LMAP (Load Moment & Area Protection) System
 - Rated Capacity Limiter
 - Displays: Boom Length, Boom Angle, Load on Hook, Percent of Rated Capacity
 - Electronic Working Area Definition
 - Operator Defined Audible Alarm Set-Points for Boom Angle, Length and Rotational Position
- Outrigger Boom Interlock System
- Outrigger Motion Alarm
- Back-Up Alarm
- Emergency Stop at Operator Controls
- Winch Drum Rotation Indicator
- Anti-Two Block Device
- Front Bumper Outrigger
- Altec Opti-View® Control System

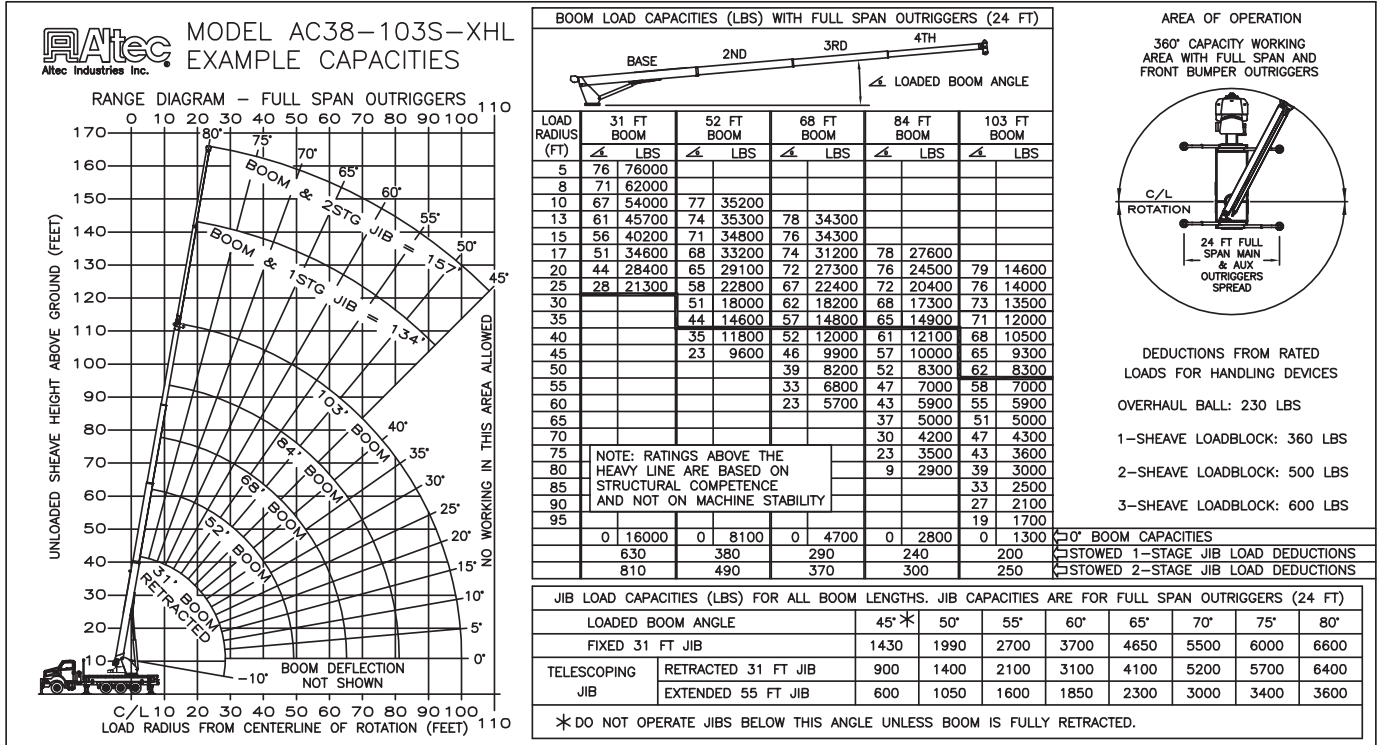
CRANE SPECIFICATIONS

- 76,000 lb (34,475 kg) Maximum Lifting Capacity
- 103 ft (31.4 m) 4-Section Non-Insulated Boom
- 113 ft (34.4 m) Maximum Sheave Height
- Stowed Travel Height of 12.9 ft (3.9 m)
- Vehicle Travel Length of 38 ft (11.6 m)
- Sequential Out-and-Down Outriggers
 - Full Span 24 ft (7.3 m)
 - Mid Span 15.75 ft (4.8 m)
 - Short Span 8.17 ft (2.5 m)
- Hydraulic Pilot-Operated Control System
- Continuous Rotation
- Hydraulic Oil Cooling System
- Lifecycle Tested for Reliability

CHASSIS REQUIREMENTS

	Option 1 Rear Tandem with Pusher		Option 2 Rear Tri-Drive	
	lb	kg	lb	kg
Gross Vehicle Weight Rating	70,000	31,750	70,000	31,750
Front Axle Weight Rating	20,000	9070	20,000	9070
Rear Axle Combination Rating	40,000	+ 17,500	60,000	27,220
	18,140	+ 17940		
Cab-to-Axle	180 in	4572 mm	160 in	4064 mm
Wheel Base	261 in	6629 mm	251 in	6375 mm

Altec AC38-103S-XHL Capacities



OPERATOR AIDS MUST BE IN GOOD OPERATING CONDITION BEFORE OPERATING CRANE. REFER TO OWNERS MANUAL. KEEP AT LEAST 3 WRAPS OF LOADLINE ON DRUM AT ALL TIMES. USE ONLY 5/8" (1.6 cm) DIAMETER IWRC OR ROTATION RESISTANT WIRE ROPE WITH 45,400 LBS (20,593 KG) MIN. BREAKING STRENGTH ON THIS MACHINE.		1 PART LOAD LINE	2 PART LOAD LINE	3 PART LOAD LINE	4 PART LOAD LINE	5 PART LOAD LINE	6 PART LOAD LINE
		LOADS UP TO	LOADS UP TO	LOADS UP TO	LOADS UP TO	LOADS UP TO	LOADS UP TO
IWRC XXIP WIRE ROPE (LBS)		12,971 lbs	25,942 lbs	38,913 lbs	51,884 lbs	64,855 lbs	78,000 lbs
IWRC XXIP WIRE ROPE (KG)		5,883 kg	11,776 kg	17,649 kg	23,532 kg	29,415 kg	34,450 kg
ROTATION RESISTANT WIRE ROPE (LBS)		9,080 lbs	18,160 lbs	27,240 lbs	36,320 lbs	45,400 lbs	54,480 lbs
ROTATION RESISTANT WIRE ROPE (KG)		4,118 kg	8,236 kg	12,354 kg	16,472 kg	24,708 kg	24,708 kg
MAXIMUM BOOM LENGTH AT MAXIMUM ELEVATION WITH RIGGING SHOWN TO REACH THE GROUND (FT)		127 FT BOOM	119 FT BOOM	87 FT BOOM	68 FT BOOM	55 FT BOOM	46 FT BOOM
MAXIMUM BOOM LENGTH AT MAXIMUM ELEVATION WITH RIGGING SHOWN TO REACH THE GROUND (M)		38 m BOOM	36 m BOOM	26 m BOOM	20 m BOOM	16 m BOOM	14 m BOOM
WINCH		LIFTS AND SPEEDS (ENGLISH UNITS)					
5/8" (1.6 cm) DIAMETER IWRC XXIP CABLE SUPPLIED	STANDARD PLANETARY WINCH HIGH SPEED	6,170 LBS 298 FT/MIN	12,340 LBS. 149 FT/MIN	18,510 LBS. 99 FT/MIN	24,680 LBS. 74 FT/MIN	30,850 LBS. 59 FT/MIN	37,020 LBS. 49 FT/MIN
	STANDARD PLANETARY WINCH LOW SPEED	12,340 LBS. 149 FT/MIN	24,680 LBS. 74 FT/MIN	37,020 LBS. 49 FT/MIN	49,360 LBS. 37 FT/MIN	61,700 LBS. 29 FT/MIN	74,040 LBS. 24 FT/MIN
WINCH		LIFTS AND SPEEDS (METRIC UNITS)					
5/8" (1.6 cm) DIAMETER IWRC XXIP CABLE SUPPLIED	STANDARD PLANETARY WINCH HIGH SPEED	2,798 kg 1.51 m/s	5,597 kg .76 m/s	8,395 kg .50 m/s	11,194 kg .37 m/s	13,993 kg .29 m/s	16,791 kg .25 m/s
	STANDARD PLANETARY WINCH LOW SPEED	5,597 kg .76 m/s	11,194 kg .37 m/s	16,791 kg .25 m/s	22,389 kg .18 m/s	27,986 kg .14 m/s	33,583 kg .12 m/s
ALL WINCH PULLS AND SPEEDS IN THIS CHART ARE SHOWN ON THE 3RD LAYER. WINCH LINE PULLS WOULD INCREASE ON THE FIRST AND SECOND LAYERS. WINCH LINE SPEED WOULD DECREASE ON THE FIRST AND SECOND LAYERS. WINCH LINE PULLS MAY BE LIMITED BY THE WINCH CAPACITY OF 10,439 LBS (4,735 KG) FULL DRUM OR ANSI CABLE SAFETY LIMITS SHOWN IN CHART FOR IWRC XXIP AND ROTATION RESISTANT WIRE ROPES.							



For Service: 1-877-GO-ALTEC
For Sales: 1-866-966-2989

Altec Cranes are supported by service centers and over 115 mobile service technicians positioned across North America, seven days a week, 24 hours a day.

United States:

Alabama Service Center
1730 Vanderbilt Road
Birmingham, AL 35234

Arizona Service Center
2505 West Durango Street
Phoenix, AZ 85009

California Service Center (Northern)
325 Industrial Way
Dixon, CA 95620

California Service Center (Southern)
2882 Pomona Boulevard
Pomona, CA 91766

Colorado Service Center
641 Telluride Street
Aurora, CO 80011

Florida Service Center
2570 Old Okeechobee Road
West Palm Beach, FL 33409

Georgia Service Center
287 First Street
Forest Park, GA 30297

Indiana Service Center
5201 West 84th Street
Indianapolis, IN 46268

Kentucky Service Center
200 Altec Drive
Elizabethtown, KY 42701

Maryland Service Center
1434 Hughes Ford Road
Frederick, MD 21701

Massachusetts Service Center
28 Wales Street
Millbury, MA 01527

Missouri Service Center
2106 S. Riverside Road
St. Joseph, MO 64507

North Carolina Service Center
1550 Aerial Avenue
Creedmoor, NC 27522

Ohio Service Center
1236 Township Road 1175
Ashland, OH 44805

Oregon Service Center
13817 NE Sandy Boulevard
Portland, OR 97230

Pennsylvania Service Center
250 Laird Street
Plains, PA 18705

Texas Service Center
1001 Solon Road
Waxahachie, TX 75156

Virginia Service Center
325 South Center Drive
Daleville, VA 24083

Canada:

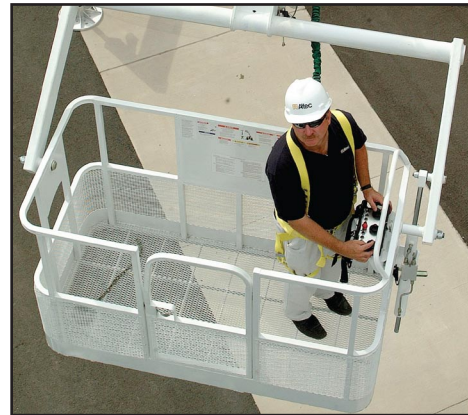
British Columbia Service Center
12352 84th Avenue
Surrey, BC V3W 0J5

Manitoba Service Center
57 Durand Road
Winnipeg, Manitoba R2J 3T1

Ontario Service Center
831 Nipissing Road
Milton, Ontario L9T 4Z4



Counterweight Above Rotation



Optional 2-Man Platform

Altec Industries, Inc.

325 South Center Drive
Daleville, VA 24083
1-540-992-5300
sales@altec.com



Manufacturing and Service Facilities Located
Throughout the United States and Canada
www.altec.com