

45 TON WHL45TC77



With a 45-ton lifting capacity, long reach and a sub-frame suitable for fifth wheel installation, the Hydra-Lift WHL45TC77 Swing Cab Cranes offer heavy lifting and versatility.

Out and down outriggers with independently operated horizontal extension cylinders and vertical jack cylinders, give the operator true stability on uneven surfaces or in tight locations. The fully equipped cab provides the operator with a comfortable working environment in all weather conditions. Mounted on a tandem steer tri-drive rear axle chassis with fifth wheel, or single steer tri-drive rear axle chassis, or tandem steer tandem rear axle chassis without fifth wheel, WHL45TC77 Cranes are truly capable of heavy lifting and heavy hauling.

FEATURES

- 45-ton lifting capacity (80,000lbs at 10' radius)
- 87' tip height (fully extended)
- 3 section 77' fully proportional boom
- 30.5' retracted length
- Continuous rotation
- Tapered rear subframe for fifth wheel installation
- Out and down outriggers
- Dual fan oil cooler
- 15,000 lb, 2 speed grooved drum planetary winch with integral brake for high efficiency and security, includes cable packer
- High strength box construction, welded booms for maximum strength to weight ratio
- A2B and LMI system with digital radio weight indicator
- Pre-wired boom and cab for work lights
- Remote Monitoring Video System: two cameras and one in-cab colour display (view right rear outriggers and winches)
- 40-ton four-sheave crane block (Easy Reeve)

OPTIONAL

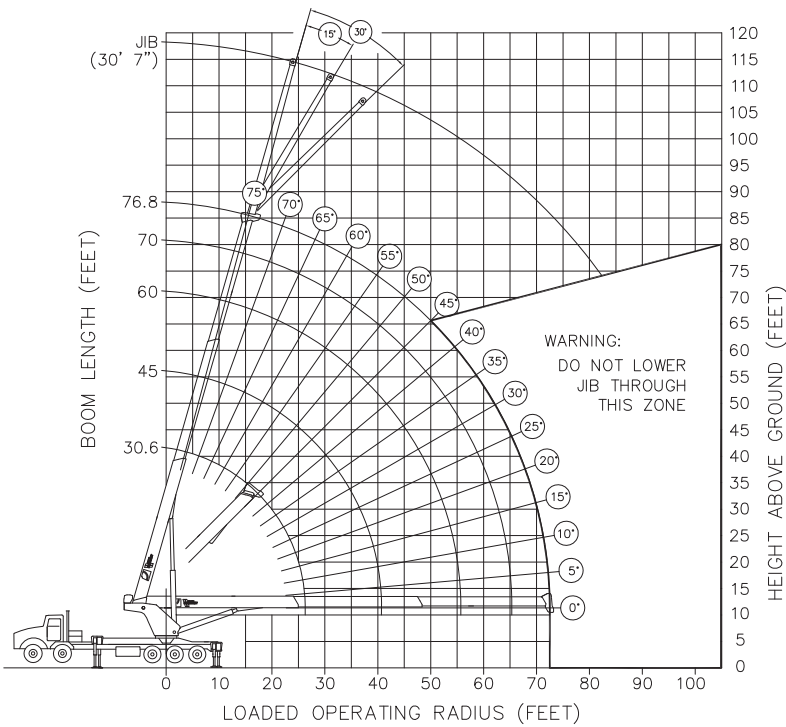
- 31' Orientable (0°, 15°, 30°) swing around jib, stows on side of boom
- 31' - 51' Orientable (0°, 15°, 30°) two-stage swing around jib, stows on side of boom
- Hydraulic tank heater
- Boom lights
- Auxillary winch options, 12,000 lb or 15,000 lb winch
- Two person self levelling man basket
- Air conditioning
- Remote radio crane controls

LOAD CHARTS AND SPECIFICATIONS

MAXIMUM RATED LOAD IN LBS. WITH OUTRIGGERS FULLY EXTENDED																						
LOADED OPERATING RADIUS	LOADED BOOM ANGLE	RETRACTED BOOM LENGTH	LOADED BOOM ANGLE	BOOM LENGTH	LOADED BOOM ANGLE	BOOM LENGTH	LOADED BOOM ANGLE	BOOM LENGTH	LOADED BOOM ANGLE	BOOM LENGTH	LOADED BOOM ANGLE	BOOM LENGTH	LOADED BOOM ANGLE	EXTENDED BOOM LENGTH	LOADED OPERATING RADIUS	30'7" ORIENTABLE JIB						
																0°		15°		30°		
																BOOM ANGLE	LOAD	BOOM ANGLE	LOAD	BOOM ANGLE	LOAD	
FEET	°	30.6'	°	40'	°	50'	°	60'	°	70'	°	74'	°	76.8'	FEET	°	LB	°	LB	°	LB	
10	62	80,000	69	61,200	74	56,250									10							
12	58	71,100	66	61,200	71	56,250	74	50,000							12							
15	51	57,700	61	54,000	67	52,800	71	45,000	74	36,000				15								
20	37	43,000	53	43,000	61	42,000	66	38,000	70	31,000	72	30,000	72	27,000	20							
25	16	35,500	43	31,500	54	32,900	61	31,000	65	27,000	68	26,000	68	22,000	25							
30			31	29,300	47	29,000	55	26,900	61	24,000	64	23,200	64	19,000	30	71	8,500					
35			12	23,300	38	23,500	49	23,600	56	22,000	59	20,600	59	16,000	35	69	8,250	73	6,800			
40					28	18,300	43	18,400	51	18,500	54	18,100	55	14,000	40	66	7,200	70	6,300	73	5,700	
45					11	14,700	35	14,800	45	14,900	49	14,700	50	13,000	45	63	6,600	67	5,650	70	5,000	
50							26	12,200	39	12,300	44	12,000	45	11,000	50	60	6,150	64	5,300	67	4,750	
55							10	10,100	32	10,200	38	10,000	40	10,000	55	56	5,500	61	4,800	64	4,300	
60									24	8,600	31	8,600	33	8,700	60	53	5,000	57	4,550	60	3,900	
65									9	7,300	22	7,300	26	7,400	65	50	4,600	54	4,200	56	3,650	
70														15	6,300	70		50	3,900	53	3,400	
75															75					49	3,100	
		975lbs		675lbs		500lbs		425lbs		375lbs		350lbs		325lbs								Deductions for Stowed Jib

RATINGS ABOVE THE HEAVY LINE ARE BASED ON STRUCTURAL COMPETENCE AND NOT ON MACHINE STABILITY.

1. Deductions must be made from rated loads for lifting accessories: fixed jibs, telescopic jibs, overhaul balls, load hooks, snatch blocks and load blocks
2. Lift line ratings are based on 5/8" 18 x 19 rotation resistant wire rope with a minimum breaking strength of 45400 lbs (sf>5).
3. Sheaves numbered from left to right when viewed facing the crane



1 PART LINE 9,000 LBS ONE SHEAVES OVERHAUL BALL	6 PART LINE 54,000 LBS ONE SHEAVES THREE SHEAVE BLOCK
2 PART LINE 18,000 LBS ONE SHEAVES SINGLE SHEAVE BLOCK OR TRIPLE SHEAVE BLOCK	7 PART LINE 63,000 LBS ONE SHEAVES THREE SHEAVE BLOCK
3 PART LINE 27,000 LBS ONE SHEAVES SINGLE SHEAVE BLOCK OR TRIPLE SHEAVE BLOCK	8 PART LINE 72,000 LBS ONE SHEAVES FOUR SHEAVE BLOCK
4 PART LINE 36,000 LBS ONE SHEAVES TWO, THREE OR FOUR SHEAVE BLOCK	9 PART LINE 81,000 LBS ONE SHEAVES FOUR SHEAVE BLOCK
5 PART LINE 45,000 LBS ONE SHEAVES TWO, THREE OR FOUR SHEAVE BLOCK	10 PART LINE 90,000 LBS ONE SHEAVES FOUR SHEAVE BLOCK



12155 - 154 Street
Edmonton, AB Canada T5V 1J3
Toll Free: 1 800 661 0378 | Fax: 780 455 6770

www.weldco-hydralift.com

