

**LINK-BELT
SPEEDER**

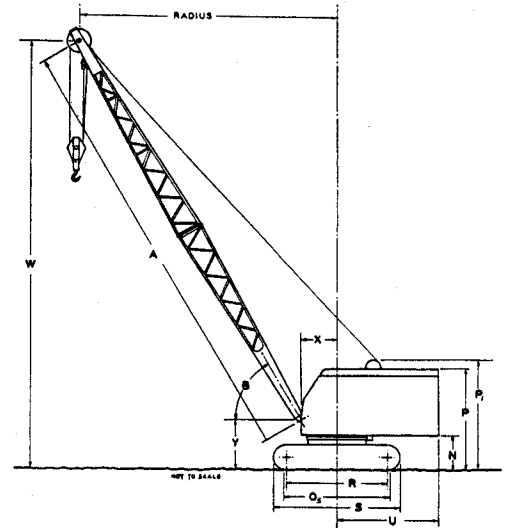
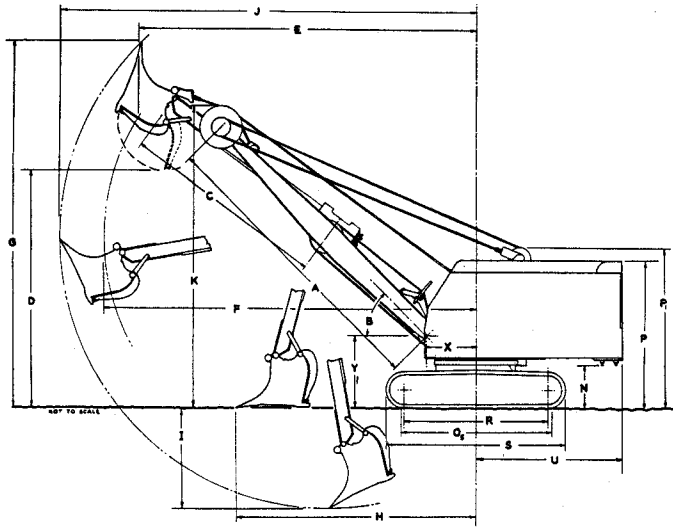
K-360 1-1/2 Cubic Yard Shovel Flysheet

30.4 TON CRAWLER MOUNTED CRANE (PCSA CLASS 12-114)

Seven Roller Side Frames 8'2" Gauge x 14'2" Long Over-all

(Supersedes Flysheet CRF6037-10-61)

GENERAL INFORMATION ONLY



SHOVEL WORKING RANGES

| | |
|--|-------|
| Dipper capacity, cubic yards (struck measure) | 1-1/2 |
| A—Boom length, center to center of pins | 23'0" |
| Effective boom length (center of boom foot pin to cable pitch line of peak sheave) | 24'6" |
| C—Dipper stick length, effective | 16'2" |
| Dipper stick length, over-all | 18'0" |

| BOOM ANGLE | B | 60° | 55° | 50° | 45° | 40° |
|----------------------------|---|---------|---------|--------|---------|--------|
| Maximum dumping height | D | 23' 4" | 21' 8" | 20' 1" | 18' 4" | 16' 5" |
| Dump radius at max. height | E | 21' 8" | 23' 7" | 25' 4" | 26' 11" | 28' 5" |
| Maximum dumping radius | F | 27' 5" | 28' 3" | 29' 0" | 29' 8" | 30' 4" |
| Maximum cutting height | G | 33' 9" | 32' 3" | 30' 7" | 28' 8" | 26' 7" |
| Maximum clean-up radius | H | 20' 3" | 20' 11" | 21' 6" | 22' 0" | 22' 6" |
| Maximum digging depth | I | 6' 2" | 6' 8" | 7' 3" | 7' 11" | 8' 8" |
| Maximum cutting radius | J | 30' 10" | 31' 7" | 32' 4" | 33' 0" | 33' 8" |
| Boom clearance height | K | 27' 4" | 26' 2" | 25' 0" | 23' 7" | 22' 2" |

GENERAL DIMENSIONS COMMON TO BOTH SHOVEL AND CRANE

| | | |
|--|-----|---------|
| Ground clearance, counterweight "A" | N | 3' 4" |
| Crawler ground bearing length | O 5 | 12' 3" |
| Cab clearance height | P | 11' 7" |
| Over-all height, low gantry | P 1 | 12' 6" |
| Center to center of wheels | R | 11' 3" |
| Over-all crawler length | S | 14' 2" |
| Tailswing, counterweight "A" | U | 10' 6" |
| Radius of boom hinge pin | X | 4' 0" |
| Height of boom hinge pin | Y | 5' 8" |
| Over-all width with 28" wide track shoes | | 10' 6" |
| Over-all width with 32" wide track shoes | | 10' 10" |
| Width of cab | | 10' 3" |
| Minimum ground clearance | | 1' 2" |

BRIEF SPECIFICATIONS

SHOVEL

| | | |
|---|--------------|--------------|
| Approximate working weight with 28" wide track shoes, low gantry, counterweight "A" | 101,600 lbs. | |
| Crowd speed | 63 f.p.m. | |
| Retract speed | 124 f.p.m. | |
| Swing speed | 3.4 r.p.m. | |
| Lagging | Line Pull | Line Speed |
| 22" hoist | 30,400 lbs. | @ 150 f.p.m. |

CRANE GENERAL DIMENSIONS

| | | |
|---|---|-------|
| Basic boom length | A | 50'0" |
| Ground clearance, counterweight "AB" .. | N | 2'7" |
| Tailswing, counterweight "AB" | U | 10'6" |

BRIEF SPECIFICATIONS

LIFTING CRANE AND CLAMSHELL

Approximate working weight with 50' boom, 28" wide track shoes, low gantry, counterweight "A", but no hook block, bucket or tagline winder 85,800 lbs.

| | | |
|----------------------------|-------------|--------------|
| Lagging | Line Pull | Line Speed |
| 22" hoist or holding | 30,400 lbs. | @ 150 f.p.m. |
| 22" hoist or closing | 30,400 lbs. | @ 150 f.p.m. |
| Swing speed | 3.4 r.p.m. | |

DRAGLINE

Approximate working weight with 50' boom, 28" wide track shoes, low gantry, counterweight "A", but no bucket

| | | |
|-------------------|-------------|--------------|
| Lagging | Line Pull | Line Speed |
| 22" hoist | 30,400 lbs. | @ 150 f.p.m. |
| 22" inhaul | 30,400 lbs. | @ 150 f.p.m. |
| Swing speed | 3.4 r.p.m. | |

CRAWLER

28" wide track shoes standard, 32" wide track shoes optional at extra cost. Travel speed: .83 m.p.h.

POWER UNITS

Suitable for operation up to 4,000' above sea level. For operation at higher altitudes, consult factory. Standard—Caterpillar D342-C diesel engine with friction clutch, six cylinder, 150 net horsepower @ 950 r.p.m. full load speed. Optional at extra cost—Caterpillar D342-C diesel engine with hydraulic coupling.



These specifications comply with the recommended Commercial Standard CS90-58, developed under the National Bureau of Standards and issued by the United States Department of Commerce.

LINK-BELT SPEEDER

Link-Belt Speeder
Cedar Rapids, Iowa

Link-Belt Speeder (Canada), Ltd.
Woodstock, Ontario

PRINTED IN U.S.A.

63-80 — 11-5-63
Flysheet CRF6046-10-63