

XTREME XR7038

MANUFACTURING

- Capacity 70,000 lbs
- Max Lift Height 38' 2"
- Forward Reach 22'
- Frame Leveling L/R 7°
- Weight 115,000 lbs
- Engine Cummins 300 hp
- Fuel Capacity 150 gal
- Tires Foam Filled
29.5 R29
- GPM 92
- PSI 4,200
- Hydraulic Oil Cap 140 gal
- Length to fork face 27' 9"
- Width 135"
- Height 11' 7"
- Wheel Base 188"
- Ground Clearance 20.5"
- Turning Radius 24' 6"
- Warranty Xtreme 10-5-2

**70,000lbs Capacity
38ft Lift Height
300 hp**



The XTREME Difference

- 360° Visibility
- Long Life Boom Rollers
- Suspension Seat
- Easy Service Access
- Protected Tilt & Extend Cylinders
- Steel Hydraulic & Fuel Tanks
- Long Life Lexan Labels
- Suspended Pedals
- Electrical Ring Terminals
- Large Capacity Fuel Tanks
- Trunnion Mounted Sway Cylinders
- Melonite Pins
- Rear Axle Stabilization (RAS)
- Center Mounted Power Train
- Standard Auxiliary Hydraulics
- Solid Steel Plate Chassis
- Steel Dash
- Ductile Steel Manifold
- Easy Cab Mounted Grab Handles
- Powerful Cummins Engine
- Master Disconnect Switch
- Boom Lift Point
- Manual Lowering Valve (Cylinders)
- Large Cross Section Boom
- Easy Tie Downs
- Heavy Duty Pre-Cleaner
- Additional High Pressure Hyd Filter
- Direct Engine/Trans Connection



RELIABLE HYDRAULIC SYSTEM



RUGGED KESSLER AXLES

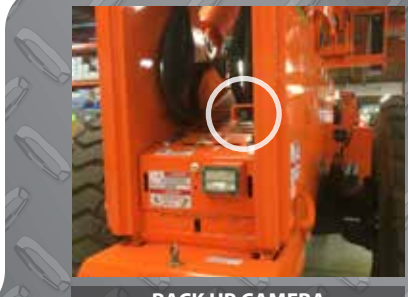
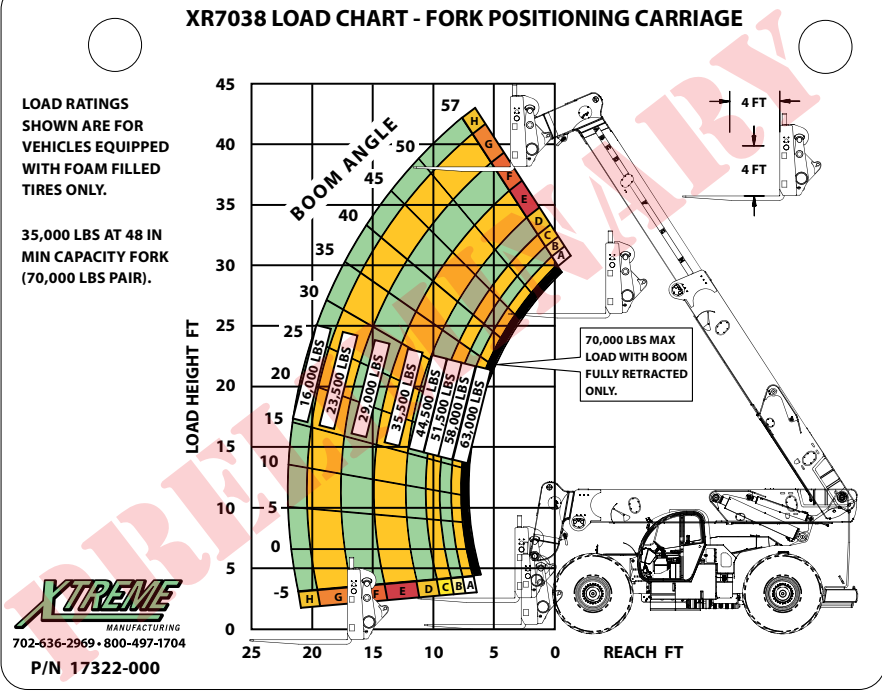


POWERFUL CUMMINS ENGINE

10-5-2 WARRANTY

- 10 YEARS OR 10,000 HOURS**
FRAME & CHASSIS WELDMENT
- 5 YEARS OR 5,000 HOURS**
BOOM WELDMENT & ROLLERS
- 2 YEARS OR 2,000 HOURS**
ENGINE, ELECTRICAL, TRANSMISSION, DRIVE
AXLES & HYDRAULIC COMPONENTS

XTREME WARRANTY



BACK UP CAMERA



INTEGRATED BOOM LIFT POINT



ADVANCED OPERATOR CONTROLS

www.XMFG.COM

BIGGE

Established 1916

CRANE and RIGGING CO.

RENTAL - SALES - PARTS & SERVICE

Tel: (888) 337-BIGGE • (510) 638-8100

Web: www.bigge.com