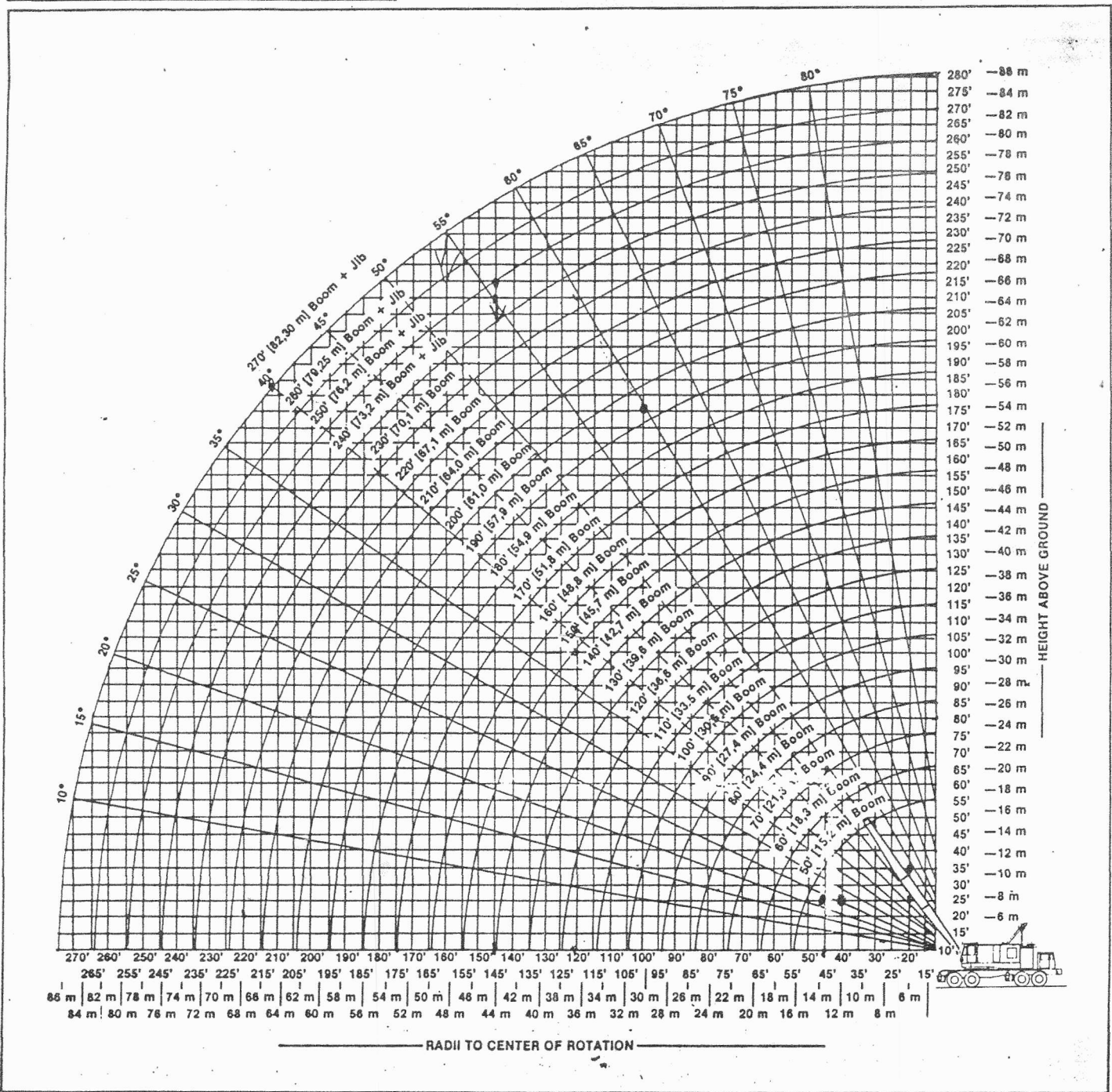


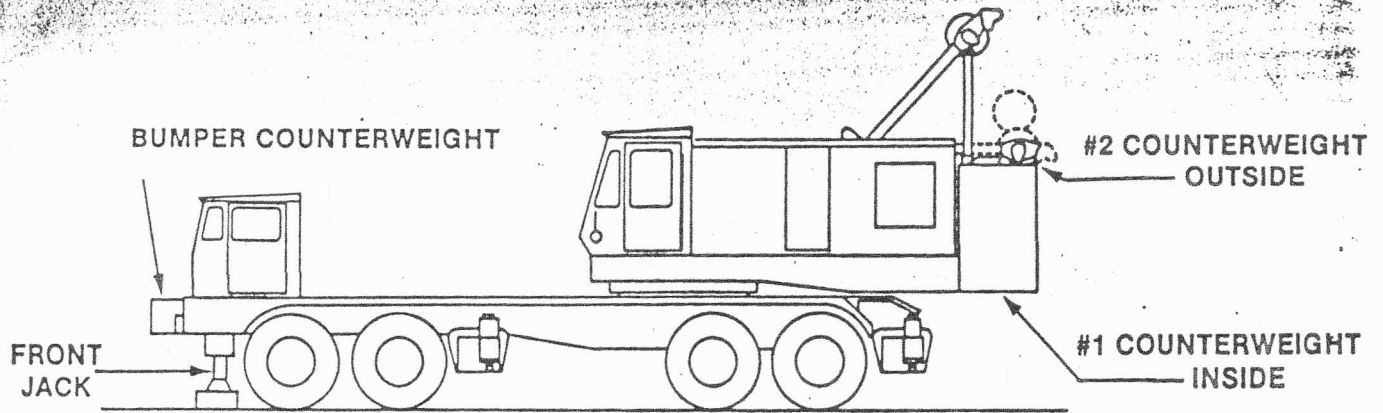
# CRANE WORKING RANGES



## ROPE REEVING FOR HOOK BLOCKS

Load	No. Part Line	Load	No. Part Line
To 22 700 lb ( 10 297 kg)	1	Over 158 900 lb ( 72 077 kg)	8
Over 22 700 lb ( 10 297 kg)	2	Over 181 600 lb ( 82 374 kg)	9
Over 45 400 lb ( 20 593 kg)	3	Over 204 300 lb ( 92 670 kg)	10
Over 68 100 lb ( 30 890 kg)	4	Over 227 000 lb (102 967 kg)	11
Over 90 800 lb ( 41 187 kg)	5	Over 249 700 lb (113 264 kg)	12
Over 113 500 lb ( 51 484 kg)	6	Over 272 400 lb (123 561 kg)	13
Over 136 200 lb ( 61 780 kg)	7		

Based Upon 3/8 in (22.2 mm) Dia. Wire Rope With A Minimum Breaking Strength Of 79 600 lb (36 107 kg)



MAXIMUM JIB LIFTING CAPACITIES			
JIB LENGTH	JIB OFFSET		
	Minimum	Intermediate	Maximum
20'-0"	27 500 lb	25 000 lb	23 000 lb
40'-0"	22 000 lb	18 000 lb	15 000 lb
60'-0"	15 000 lb	10 000 lb	9 500 lb
80'-0"	7 500 lb	7 000 lb	6 000 lb

**DETERMINATION OF BOOM PLUS JIB LIFTING CAPACITIES ON THE JIB POINT:**

A. For a combined boom plus jib length (length of boom plus length of jib) 230' or less, refer to the "outrigger extended and set side/rear" portion of the chart on pages 10 and 11 only. The lifting capacity is shown by the chart with a boom length equal to the combined boom plus jib being used but shall not exceed the appropriate maximum jib lifting capacity shown by the above chart. (Example: 160' boom + 40' jib at 90' radius with minimum jib offset.

Refer to lifting capacities shown by the 200' boom chart on page 11. Capacity at 90' radius is 21 500 lb. Since 21 500 lb is less than 22 000 lb shown in the above chart, 21 500 lb is the lifting capacity for this boom plus jib combination at this radius and jib offset).

B. For a combined boom plus jib length 240' or greater, refer to the following charts only.

CAPACITY — BOOM PLUS JIB AT MINIMUM OFFSET														
R	A	Cap	R	A	Cap	R	A	Cap	R	A	Cap	R	A	Cap
§ 220' BOOM + 20' JIB			180' BOOM + 60' JIB			§ 210' BOOM + 40' JIB			170' BOOM + 80' JIB			180' BOOM + 80' JIB		
50'	79	*27 500	60'	77	*15 000	60'	78	*19 500	60'	77	*7 500	60'	78	*7 500
60'	77	*27 500	70'	75	*15 000	70'	75	*19 500	70'	75	*7 500	70'	76	*7 500
70'	74	*27 500	80'	73	*15 000	80'	73	*19 500	80'	73	*7 500	80'	73	*7 500
80'	72	24 200	90'	70	*15 000	90'	71	19 300	90'	70	*7 500	90'	71	*7 500
90'	69	19 300	100'	67	*15 000	100'	68	16 500	100'	68	*7 500	100'	69	*7 500
100'	67	16 500	110'	65	13 700	110'	66	13 700	110'	65	*7 500	110'	66	*7 500
110'	64	13 700	120'	62	11 600	120'	63	11 600	120'	63	*7 500	120'	64	*7 500
120'	62	11 600	130'	59	9 800	130'	60	9 800	130'	60	*7 500	130'	61	*7 500
130'	59	9 800	140'	56	8 000	140'	58	8 000	140'	57	*7 500	140'	59	*7 500
140'	56	8 000	150'	53	6 800	150'	55	6 800	150'	55	6 800	150'	56	6 800
150'	53	6 800	160'	50	5 200	160'	52	5 200	160'	52	5 200	160'	53	5 200
160'	50	5 200	170'	47	4 100	170'	49	4 100	170'	49	4 100	170'	51	4 100
170'	47	4 100	180'	44	3 200	180'	46	3 200	180'	46	3 200	180'	48	3 200
180'	43	3 200	190'	40	2 200	190'	43	2 200	190'	42	2 200	190'	45	2 200
190'	40	2 200	160' BOOM + 80' JIB			190' BOOM + 60' JIB			§ 200' BOOM + 60' JIB			190' BOOM + 80' JIB		
§ 200' BOOM + 40' JIB			50'	79	*7 500	60'	78	*15 000	60'	78	*15 000	60'	78	*7 500
60'	77	*19 500	60'	77	*7 500	70'	76	*15 000	70'	76	*15 000	70'	76	*7 500
70'	75	*19 500	70'	75	*7 500	80'	73	*15 000	80'	74	*15 000	80'	74	*7 500
80'	72	*19 500	80'	72	*7 500	90'	71	*15 000	90'	72	*15 000	90'	72	*7 500
90'	70	19 300	90'	69	*7 500	100'	68	*15 000	100'	69	*15 000	100'	70	*7 500
100'	67	16 500	100'	67	*7 500	110'	66	13 700	110'	67	13 700	110'	67	*7 500
110'	65	13 700	110'	64	*7 500	120'	63	11 600	120'	64	11 600	120'	65	*7 500
120'	62	11 600	120'	62	*7 500	130'	61	9 800	130'	62	9 800	130'	63	*7 500
130'	59	9 800	130'	59	*7 500	140'	58	8 000	140'	59	8 000	140'	60	*7 500
140'	56	8 000	140'	56	*7 500	150'	55	6 800	150'	57	6 800	150'	58	6 800
150'	53	6 800	150'	53	6 800	160'	52	5 200	160'	54	5 200	160'	55	5 200
160'	50	5 200	160'	50	5 200	170'	49	4 100	170'	51	4 100	170'	52	4 100
170'	47	4 100	170'	47	4 100	180'	46	3 200	180'	48	3 200	180'	50	3 200
180'	44	3 200	180'	43	3 200	190'	43	2 200	190'	45	2 200	190'	47	2 200
180'	40	2 200	190'	40	2 200									

R = Load Radius, for C of rotation.

A = Angle of boom C to horizontal, see note 16, page 12.

Cap = Capacity in pounds; on outriggers with counterweights #1 and #2; over side or rear.

§ = Midpoint suspension required, see note 13, page 12.

Machine must be equipped with Front Jacks For 360° Load Handling.

Bumper Counterweight not required, but may be mounted on the machine.

# CRANE LIFTING CAPACITIES

140 TON CLASS 12.6 - 754													
Boom				*Outriggers Extended and Set ‡Side/Rear	Outriggers Extended and set ■Rear Only	*On-Tires Rear Only †	Boom				*Outriggers Extended and Set ‡Side/Rear	Outriggers Extended and set ■Rear Only	*On Tires Rear Only †
Length	Radius	Angle	Height				Length	Radius	Angle	Height			
50'	12.6'	80.9	56.2'	*280 000	*280 000		120'	23.5'	81.0	125.3'	*146 100	*146 100	46 500
	15'	78.1	55.6'	*227 600	*227 600	86 900		25'	80.2	125.0'	*137 400	*137 400	42 800
	20'	72.1	54.2'	*173 300	*173 300	58 600		30'	77.8	124.0'	*114 500	*114 500	33 500
	25'	65.9	52.1'	*139 500	*139 500	43 700		35'	75.3	122.8'	92 200	* 97 500	27 200
	30'	59.4	49.4'	*116 200	*116 200	34 500		40'	72.8	121.3'	75 300	* 83 400	22 600
	35'	52.4	45.8'	92 200	* 99 600	28 200		45'	70.3	119.6'	63 400	* 72 400	19 100
	40'	44.5	41.2'	75 400	* 87 000	23 600		50'	67.8	117.6'	54 500	* 63 600	16 400
	45'	35.3	34.9'	63 600	74 300	20 100		60'	62.5	112.8'	42 200	49 900	12 400
50'	23.0	25.4'	54 700	64 300	17 300	70'	56.9	106.9'	34 000	40 600	9 600		
60'	14.1'	81.0	66.0'	*240 600	*240 600		130'	25.0	81.0	135.2'	*137 000	*137 000	42 400
	15'	80.1	65.9'	*227 400	*227 400	86 900		30'	78.7	134.2'	*114 000	*114 000	33 200
	20'	75.2	64.7'	*173 000	*173 000	58 600		35'	76.5	133.1'	92 200	* 95 000	26 900
	25'	70.2	63.0'	*139 300	*139 300	43 700		40'	74.2	131.7'	75 200	* 81 300	22 300
	30'	64.9	60.8'	*116 100	*116 100	34 500		45'	71.9	130.2'	63 200	* 70 600	18 800
	35'	59.5	58.0'	92 200	* 99 500	28 200		50'	69.5	128.4'	54 300	* 62 600	16 100
	40'	53.7	54.6'	75 400	* 86 800	23 600		60'	64.7	124.0'	42 000	* 49 300	12 100
	45'	47.4	50.3'	63 600	74 500	20 100		70'	59.7	118.7'	33 800	* 39 900	9 300
50'	40.4	44.9'	54 700	64 500	17 400	80'	54.5	112.1'	27 900	33 600	7 200		
60'	20.8	27.2'	42 600	50 400	13 300	90'	48.8	104.0'	23 600	28 600	5 600		
70'	19.2	28.8'	34 400	41 000	10 300	100'	42.6	94.1'	20 200	24 700	4 400		
80'	17.2'	81.0	85.8'	*198 800	*198 800	81 800	110'	35.5	81.5'	14 900	21 500	3 300	
20'	77.3	75.0'	*172 800	*172 800	58 600	120'	26.9	64.7'	14 800	18 900	2 400		
25'	73.1	73.6'	*139 000	*139 000	43 600	130'	13.8	36.9'	13 300	16 700			
30'	68.7	71.8'	*116 000	*116 000	34 300	26.6'	81.0	145.1'	*128 200	*128 200	38 800		
35'	64.2	69.5'	92 200	* 99 200	28 000	30'	79.6	144.4'	*112 800	*112 800	33 000		
40'	59.6	66.7'	75 400	* 86 600	23 500	35'	77.5	143.4'	92 000	* 93 200	26 600		
45'	54.6	63.3'	63 600	74 500	20 000	40'	75.4	142.1'	75 000	* 79 500	22 000		
50'	49.4	59.3'	54 700	64 500	17 300	45'	73.2	140.7'	63 000	* 68 800	18 600		
60'	37.2	48.3'	42 600	50 500	13 200	50'	71.1	139.0'	54 100	* 61 200	15 800		
70'	19.2	28.8'	34 400	41 000	10 300	60'	66.7	135.1'	41 700	* 48 700	11 800		
80'	17.9	30.4'	28 600	34 300	8 200	70'	62.1	130.2'	33 500	* 39 700	9 000		
90'	18.8'	81.0	95.7'	*182 600	*182 600	71 600	80'	57.3	124.2'	27 700	* 33 000	7 000	
20'	80.2	95.4'	*172 100	*172 100	58 400	90'	52.3	117.0'	23 400	* 28 000	5 400		
25'	76.9	94.4'	*138 400	*138 400	43 300	100'	46.9	108.4'	20 000	24 400	4 100		
30'	73.6	93.0'	*115 400	*115 400	34 000	110'	40.9	97.8'	14 900	21 300	3 100		
35'	70.3	91.3'	92 200	* 98 700	27 700	120'	34.2	84.6'	14 800	18 700	2 200		
40'	66.8	89.2'	75 400	* 86 000	23 200	130'	25.8	66.9'	13 200	16 500			
45'	63.3	86.8'	63 600	74 400	19 700	140'	13.3	38.1'	11 500	14 700			
50'	59.6	84.0'	54 700	64 400	17 000	28.2'	81.0	154.9'	*118 100	*118 100			
60'	51.9	77.0'	42 600	50 300	13 000	30'	80.3	154.6'	*110 000	*110 000			
70'	43.1	67.6'	34 400	41 000	10 100	35'	78.3	153.6'	* 90 700	* 90 700			
80'	32.5	54.4'	28 600	34 200	8 000	40'	76.3	152.5'	74 900	* 77 700			
90'	16.8	31.8'	24 100	29 100	6 300	45'	74.4	151.1'	62 900	* 67 800			
100'	20.4'	81.0	105.5'	*168 500	*168 500	56 800	50'	72.4	149.6'	53 900	* 59 300		
25'	78.3	104.6'	*138 100	*138 100	43 200	60'	68.3	145.9'	41 500	* 47 200			
30'	75.3	103.4'	*115 100	*115 100	33 900	70'	64.1	141.4'	33 300	* 39 400			
35'	72.3	101.9'	92 200	* 98 400	27 500	80'	59.8	136.0'	27 400	* 32 700			
40'	69.3	100.1'	75 400	* 85 700	23 000	90'	55.2	129.5'	23 100	* 27 700			
45'	66.2	97.9'	63 600	* 73 900	19 500	100'	50.4	121.8'	19 700	* 23 700			
50'	63.0	95.5'	54 700	64 200	16 800	110'	45.2	112.6'	14 900	* 20 600			
60'	56.3	89.5'	42 500	50 200	12 800	120'	39.5	101.5'	14 700	* 18 000			
70'	49.0	81.6'	34 300	40 800	10 000	130'	32.9	87.6'	12 900	* 15 900			
80'	40.3	71.4'	28 500	34 200	7 900	140'	24.9	69.2'	11 300	14 400			
90'	30.8	57.1'	24 100	29 100	6 300	150'	12.8	39.2'	9 900	12 800			
100'	15.9	33.2'	20 600	25 100	4 900	29.8'	81.0	164.8'	*109 100	*109 100			
110'	21.9'	81.0	115.4'	*156 600	*156 600	51 200	30'	80.9	164.8'	*108 200	*108 200		
25'	79.3	114.8'	*137 600	*137 600	42 900	35'	79.0	163.8'	* 90 100	* 90 100			
30'	76.7	113.7'	*114 700	*114 700	33 600	40'	77.2	162.7'	74 700	* 75 900			
35'	74.0	112.4'	92 200	* 98 000	27 300	45'	75.4	161.5'	62 700	* 66 500			
40'	71.2	110.7'	75 400	* 85 300	22 700	50'	73.5	160.1'	53 700	* 58 000			
45'	68.4	108.8'	63 500	* 73 700	19 200	60'	69.7	156.7'	41 300	* 46 200			
50'	65.6	106.7'	54 600	* 63 600	16 500	70'	65.8	152.5'	33 100	* 38 400			
60'	59.7	101.3'	42 200	50 000	12 500	80'	61.8	147.5'	27 300	* 32 100			
70'	53.4	94.6'	34 100	40 600	9 700	90'	57.7	141.6'	22 900	* 27 500			
80'	46.5	86.0'	28 200	33 900	7 600	100'	53.3	134.6'	19 500	* 23 600			
90'	38.8	74.9'	23 900	28 900	6 000	110'	48.7	126.4'	14 900	* 20 500			
100'	29.3	59.8'	20 500	24 900	4 700	120'	43.7	116.6'	14 600	* 17 900			
110'	15.1	34.5'	14 900	21 700	3 600	130'	38.2	104.9'	12 700	* 15 700			
							140'	31.9	90.4'	11 200	* 13 900		
							150'	24.1	71.3'	9 800	* 12 300		
							160'	12.4	40.3'	8 600	* 10 900		



Boom				• Outriggers Extended and Set ‡ Side/Rear	Outriggers Extended and set ■ Rear Only	• On Tires Rear Only †	Boom				• Outriggers Extended and Set ‡ Side/Rear	Outriggers Extended and set ■ Rear Only	• On Tires Rear Only †
Length	Radius	Angle	Height				Length	Radius	Angle	Height			
170'	31.3'	81.0	174.7'	* 97 600	* 97 600		‡210'	37.6'	81.0	214.2'	* 58 900	* 58 900	
	35'	79.7	174.0'	* 87 900	* 87 900			40'	80.3	213.8'	* 58 500	* 58 500	
	40'	78.0	173.0'	* 74 200	* 74 200			45'	78.9	212.8'	* 53 400	* 53 400	
	45'	76.2	171.8'	62 500	* 64 700			50'	77.5	211.7'	* 48 000	* 48 000	
	50'	74.5	170.5'	53 500	* 56 500			60'	74.7	209.2'	* 38 600	* 38 600	
	60'	71.0	167.3'	41 100	* 45 200			70'	71.8	206.2'	* 31 500	* 31 500	
	70'	67.3	163.4'	32 900	* 37 000			80'	68.9	202.5'	* 25 600	* 25 600	
	80'	63.6	158.8'	27 000	* 31 100			90'	66.0	198.3'	* 21 200	* 21 200	
	90'	59.8	153.3'	22 600	* 26 400			100'	62.9	193.5'	* 17 700	* 17 700	
	100'	55.8	146.9'	19 200	* 22 500			110'	59.8	188.0'	* 14 900	* 15 000	
	110'	51.6	139.5'	14 900	* 20 200			120'	56.6	181.7'	* 12 800	* 12 800	
	120'	47.1	130.8'	14 300	* 17 600			130'	53.3	174.6'	* 10 900	* 10 900	
	130'	42.3	120.5'	12 400	* 15 400			140'	49.8	166.5'	* 9 300	* 9 300	
	140'	37.0	108.3'	10 900	* 13 600			150'	46.1	157.4'	* 8 000	* 8 000	
	150'	30.9	93.2'	9 500	* 12 000			160'	42.1	147.0'	* 6 800	* 6 800	
	160'	23.4	73.4'	8 300	* 10 700			170'	37.8	134.9'	* 5 800	* 5 800	
	170'	12.0	41.3'	7 300	* 9 400			180'	33.1	120.8'	* 4 900	* 4 900	
180'	32.9'	81.0	184.6'	* 84 800	* 84 800		‡220'	39.2'	81.0	224.1'	* 51 300	* 51 300	
	35'	80.3	184.2'	* 84 100	* 84 100			40'	80.7	223.9'	* 50 900	* 50 900	
	40'	78.7	183.2'	* 72 300	* 72 300			45'	79.4	223.0'	* 50 200	* 50 200	
	45'	77.0	182.1'	62 300	* 63 200			50'	78.1	222.0'	* 44 800	* 44 800	
	50'	75.4	180.8'	53 300	* 55 100			60'	75.4	219.6'	* 36 600	* 36 600	
	60'	72.1	177.9'	40 800	* 44 100			70'	72.7	216.7'	* 30 300	* 30 300	
	70'	68.7	174.2'	32 600	* 35 900			80'	69.9	213.2'	* 25 400	* 25 400	
	80'	65.2	169.9'	26 800	* 30 000			90'	67.1	209.2'	* 20 400	* 20 400	
	90'	61.6	164.8'	22 400	* 25 400			100'	64.3	204.7'	* 17 700	* 17 700	
	100'	57.9	158.9'	19 000	* 22 200			110'	61.3	199.5'	* 14 900	* 14 900	
	110'	54.1	152.1'	14 900	* 19 500			120'	58.3	193.6'	* 12 500	* 12 500	
	120'	50.0	144.2'	14 000	* 16 900			130'	55.2	187.0'	* 10 600	* 10 600	
	130'	45.7	135.0'	12 200	* 14 800			140'	51.9	179.5'	* 8 900	* 8 900	
	140'	41.0	124.3'	10 600	* 12 900			150'	48.5	171.1'	* 7 500	* 7 500	
	150'	35.9	111.5'	9 300	* 11 400			160'	44.9	161.6'	* 6 300	* 6 300	
	160'	30.0	95.9'	8 100	* 10 000			170'	41.1	150.8'	* 5 000	* 5 200	
	170'	22.7	75.4'	7 100	* 8 800			180'	36.9	138.3'	* 3 900	* 3 900	
180'	11.7	42.3'	6 100	* 7 700		190'	32.3	123.7'	* 3 000	* 3 000			
190'	34.5'	81.0	194.4'	* 74 500	* 74 500		‡230'	40.7'	81.0	234.0'	* 43 100	* 43 100	
	35'	80.8	194.3'	* 74 400	* 74 400			45'	79.9	233.2'	* 42 300	* 42 300	
	40'	79.3	193.4'	* 70 600	* 70 600			50'	78.6	232.2'	* 41 700	* 41 700	
	45'	77.7	192.4'	* 61 300	* 61 300			60'	76.0	229.9'	* 35 400	* 35 500	
	50'	76.2	191.2'	53 100	* 53 300			70'	73.5	227.1'	* 29 100	* 29 100	
	60'	73.0	188.4'	40 600	* 42 700			80'	70.8	223.9'	* 24 200	* 24 200	
	70'	69.8	184.9'	32 300	* 34 500			90'	68.2	220.1'	* 19 300	* 19 300	
	80'	66.6	180.9'	26 500	* 28 500			100'	65.5	215.7'	* 16 500	* 16 500	
	90'	63.3	176.1'	22 100	* 24 300			110'	62.7	210.8'	* 13 700	* 13 700	
	100'	59.8	170.6'	18 700	* 21 500			120'	59.8	205.3'	* 11 600	* 11 600	
	110'	56.2	164.3'	14 900	* 18 400			130'	56.9	199.0'	* 9 800	* 9 800	
	120'	52.5	157.1'	13 700	* 15 800			140'	53.9	192.1'	* 8 000	* 8 000	
	130'	48.6	148.7'	11 900	* 13 700			150'	50.7	184.3'	* 6 800	* 6 800	
	140'	44.4	139.1'	10 300	* 12 200			160'	47.4	175.5'	* 5 200	* 5 200	
	150'	39.9	127.9'	9 000	* 10 700			170'	43.9	165.6'	* 4 100	* 4 100	
	160'	34.9	114.7'	7 800	* 9 300			180'	40.1	154.4'	* 3 200	* 3 200	
	170'	29.1	98.5'	6 700	* 8 100			190'	36.1	141.6'	* 2 200	* 2 200	
180'	22.1	77.3'	5 800	* 7 000									
190'	11.4	43.3'	5 000	* 6 100									
‡200'	36.0'	81.0	204.3'	* 67 800	* 67 800								
	40'	79.8	203.6'	* 62 300	* 62 300								
	45'	78.3	202.6'	* 56 000	* 56 000								
	50'	76.9	201.5'	* 50 700	* 50 700								
	60'	73.9	198.8'	* 40 100	* 40 100								
	70'	70.9	195.6'	* 31 800	* 31 800								
	80'	67.8	191.8'	* 25 900	* 25 900								
	90'	64.7	187.3'	* 21 500	* 21 500								
	100'	61.5	182.1'	* 18 100	* 18 100								
	110'	58.1	176.2'	* 14 900	* 15 400								
	120'	54.7	169.5'	* 13 200	* 13 200								
	130'	51.1	161.9'	* 11 300	* 11 300								
	140'	47.3	153.1'	* 9 700	* 9 700								
	150'	43.2	143.1'	* 8 400	* 8 400								
	160'	38.8	131.5'	* 7 200	* 7 200								
	170'	34.0	117.8'	* 6 200	* 6 200								
	180'	28.4	101.0'	* 5 300	* 5 300								
190'	21.5	79.2'	* 4 400	* 4 400									
200'	11.1	44.2'	* 3 700	* 3 700									

‡ Requires #1 & #2 Counterweight. Machine must be equipped with Front Jacks For 360° Load Handling.  
 ■ Requires #1, #2 & Bumper Counterweights.

† Requires #1 Counterweight.  
 § = Midpoint Suspension Required.  
 • Bumper Counterweight not required, but may be mounted on the machine.

**CAPACITY — BOOM PLUS JIB AT INTERMEDIATE OFFSET**

R	A	Cap	R	A	Cap	R	A	Cap	R	A	Cap	R	A	Cap
§ 220' BOOM + 20' JIB			180' BOOM + 60' JIB			§ 210' BOOM + 40' JIB			170' BOOM + 80' JIB			180' BOOM + 80' JIB		
60'	78	*19 900	70'	77	*10 000	60'	79	*16 200	70'	78	*7 000	70'	78	*7 000
70'	75	*19 900	80'	75	*10 000	70'	77	*16 200	80'	76	*7 000	80'	76	*7 000
80'	73	*19 900	90'	72	*10 000	80'	74	*16 200	90'	73	*7 000	90'	74	*7 000
90'	70	*19 300	100'	70	*10 000	90'	72	*16 200	100'	71	*7 000	100'	71	*7 000
100'	68	16 500	110'	67	*10 000	100'	70	*15 000	110'	68	*7 000	110'	69	*7 000
110'	65	13 700	120'	64	*10 000	110'	67	13 700	120'	66	*7 000	120'	67	*7 000
120'	62	11 600	130'	61	9 800	120'	64	11 600	130'	63	*7 000	130'	64	*7 000
130'	59	9 800	140'	59	8 000	130'	62	9 800	140'	60	*7 000	140'	62	*7 000
140'	57	8 000	150'	56	6 800	140'	59	8 000	150'	57	6 800	150'	59	6 800
150'	54	6 800	160'	52	5 200	150'	56	6 800	160'	55	5 200	160'	56	5 200
160'	51	5 200	170'	49	4 100	160'	53	5 200	170'	52	4 100	170'	53	4 100
170'	47	4 100	180'	46	3 200	170'	50	4 100	180'	48	3 200	180'	50	3 200
180'	44	3 200	190'	42	2 200	180'	47	3 200	190'	45	2 200	190'	47	2 200
190'	40	2 200				190'	44	2 200						
§ 200' BOOM + 40' JIB			160' BOOM + 80' JIB			190' BOOM + 60' JIB			§ 200' BOOM + 60' JIB			190' BOOM + 80' JIB		
60'	79	*16 200	70'	78	*7 000	70'	78	*10 000	70'	78	*10 000	70'	79	*7 000
70'	76	*16 200	80'	75	*7 000	80'	75	*10 000	80'	76	*10 000	80'	77	*7 000
80'	74	*16 200	90'	72	*7 000	90'	73	*10 000	90'	74	*10 000	90'	74	*7 000
90'	71	*16 200	100'	70	*7 000	100'	70	*10 000	100'	71	*10 000	100'	72	*7 000
100'	69	*15 000	110'	67	*7 000	110'	68	*10 000	110'	69	*10 000	110'	70	*7 000
110'	66	13 700	120'	65	*7 000	120'	65	*10 000	120'	66	*10 000	120'	68	*7 000
120'	63	11 600	130'	62	*7 000	130'	63	9 800	130'	64	9 800	130'	65	*7 000
130'	60	9 800	140'	59	*7 000	140'	60	8 000	140'	61	8 000	140'	63	*7 000
140'	58	8 000	150'	56	6 800	150'	57	6 800	150'	59	6 800	150'	60	6 800
150'	55	6 800	160'	53	5 200	160'	54	5 200	160'	56	5 200	160'	58	5 200
160'	52	5 200	170'	50	4 100	170'	51	4 100	170'	53	4 100	170'	53	4 100
170'	48	4 100	180'	46	3 200	180'	48	3 200	180'	50	3 200	180'	52	3 200
180'	45	3 200	190'	42	2 200	190'	45	2 200	190'	47	2 200	190'	49	2 200
190'	41	2 200												

**CAPACITY — BOOM PLUS JIB AT MAXIMUM OFFSET**

R	A	Cap	R	A	Cap	R	A	Cap	R	A	Cap	R	A	Cap
§ 220' BOOM + 20' JIB			180' BOOM + 60' JIB			§ 210' BOOM + 40' JIB			170' BOOM + 80' JIB			180' BOOM + 80' JIB		
60'	79	*18 000	80'	78	*9 500	70'	79	*12 700	90'	78	*6 000	90'	78	*6 000
70'	76	*18 000	90'	76	*9 500	80'	77	*12 700	100'	75	*6 000	100'	76	*6 000
80'	74	*18 000	100'	73	*9 500	90'	74	*12 700	110'	73	*6 000	110'	73	*6 000
90'	71	*18 000	110'	70	*9 500	100'	72	*12 700	120'	70	*6 000	120'	71	*6 000
100'	69	16 500	120'	67	*9 500	110'	69	*12 700	130'	67	*6 000	130'	68	*6 000
110'	66	13 700	130'	64	*9 500	120'	66	11 600	140'	64	*6 000	140'	66	*6 000
120'	63	11 600	140'	62	8 000	130'	64	9 800	150'	62	*6 000	150'	63	*6 000
130'	60	9 800	150'	58	6 800	140'	61	8 000	160'	59	5 200	160'	60	5 200
140'	58	8 000	160'	55	5 200	150'	58	6 800	170'	55	4 100	170'	57	4 100
150'	55	6 800	170'	52	4 100	160'	55	5 200	180'	52	3 200	180'	54	3 200
160'	51	5 200	180'	48	3 200	170'	52	4 100	190'	49	2 200	190'	51	2 200
170'	48	4 100	190'	44	2 200	180'	49	3 200						
180'	45	3 200				190'	45	2 200	§ 200' BOOM + 60' JIB			190' BOOM + 80' JIB		
190'	41	2 200							80'	79	*9 500	90'	79	*6 000
§ 200' BOOM + 40' JIB			160' BOOM + 80' JIB			190' BOOM + 60' JIB						100'	76	*6 000
70'	79	*12 700	90'	77	*6 000	80'	79	*9 500	100'	74	*9 500	110'	74	*6 000
80'	76	*12 700	100'	74	*6 000	90'	76	*9 500	110'	72	*9 500	120'	72	*6 000
90'	73	*12 700	110'	72	*6 000	100'	74	*9 500	120'	69	*9 500	130'	69	*6 000
100'	71	*12 700	120'	69	*6 000	110'	71	*9 500	130'	67	*9 500	140'	67	*6 000
110'	68	*12 700	130'	66	*6 000	120'	68	*9 500	140'	64	8 000	150'	64	*6 000
120'	65	11 600	140'	63	*6 000	130'	66	*9 500	150'	61	6 800	160'	61	5 200
130'	62	9 800	150'	60	5 200	140'	63	8 000	160'	59	5 200	170'	59	4 100
140'	59	8 000	160'	57	5 200	150'	60	6 800	170'	56	4 100	180'	56	3 200
150'	56	6 800	170'	54	4 100	160'	57	5 200	180'	53	3 200	190'	53	2 200
160'	53	5 200	180'	50	3 200	170'	54	4 100						
170'	50	4 100	190'	46	2 200	180'	51	3 200						
180'	46	3 200				190'	47	2 200						
190'	42	2 200												

Machine must be equipped with Front Jacks For 360° Load Handling.  
Bumper Counterweight not required, but may be mounted on the machine.

R = Load Radius from C of rotation  
A = Angle of boom C to horizontal, see note 16, page 12  
Cap = Capacity in pounds; on outriggers with counterweights #1 and #2; over side or rear  
§ = Midpoint suspension required, see note 13 page 12

**CLARK** Crane Division

Manufactured and Sold in Conformance with U.S. Department of Commerce Commercial Standard CS90-58.

DISTRIBUTED BY

LIMA, OHIO 45802