

KRUPP KMK-5110

LIFTING CAPACITIES FOR MAIN BOOM  
ON RUBBER / OVER REAR ONLY  
9,250 LB. COUNTERWEIGHT  
LIFTING CAPACITIES IN 1,000 LBS.

| Radius<br>in<br>Feet | FREE-ON RUBBER / OVER REAR ONLY |      |  |      | Radius<br>in<br>Feet |
|----------------------|---------------------------------|------|--|------|----------------------|
|                      | BOOM LENGTH (FEET)              |      |  |      |                      |
|                      |                                 | 42'  |  | 73'  |                      |
| 10                   |                                 | 34.2 |  |      | 10                   |
| 13                   |                                 | 27.5 |  |      | 13                   |
| 15                   |                                 | 23.1 |  | 24.3 | 15                   |
| 20                   |                                 | 19.4 |  | 20.3 | 20                   |
| 23                   |                                 | 16.3 |  | 17.2 | 23                   |
| 25                   |                                 | 13.6 |  | 14.5 | 25                   |
| 30                   |                                 | 16.5 |  | 12.3 | 30                   |
| 33                   |                                 | 9.5  |  | 10.6 | 33                   |
| 35                   |                                 |      |  | 8.8  | 35                   |
| 40                   |                                 |      |  | 7.5  | 40                   |
| 43                   |                                 |      |  | 6.2  | 43                   |
| 45                   |                                 |      |  | 5.0  | 45                   |
| 50                   |                                 |      |  | 4.2  | 50                   |
| 55                   |                                 |      |  | 3.3  | 55                   |
| <b>PRELIMINARY</b>   |                                 |      |  |      |                      |
| T1                   |                                 | 0    |  | 0    | T1                   |
| T2                   |                                 | 0    |  | 100  | T2                   |
| T3                   |                                 | 0    |  | 0    | T3                   |

KMK 5090PROVISIONAL INFORMATION  
TRAVELLING ON THE JOBSITE

- (A) With mainboom and 14.8t counterweight=  
MAINBOOM TO THE REAR/BOOM ANGLE TO STEEP POSITION =  $84^{\circ}$   
BOOM FULLY RETRACTED = 0 TELESCOPE
- (B) With mainboom and 14.8t counterweight =  
MAINBOOM TO THE FRONT/BOOM ANGLE TO FLAT POSITION =  $0 - 5^{\circ}$   
BOOM TELESCOPED 8M WITH SECTION 1 = BOOM LENGTH OF 20.65M
- (C) With mainboom and 10.0t counterweight =  
MAINBOOM TO THE REAR/BOOM ANGLE TO STEEP POSITION =  $84^{\circ}$   
BOOM FULLY RETRACTED = 0 TELESCOPE
- (D) With mainboom and 10.0t counterweight =  
MAINBOOM TO THE FRONT/BOOM ANGLE TO FLAT POSITION =  $0 - 5^{\circ}$   
BOOM TELESCOPED 4.725M WITH SECTION 1 = BOOM LENGTH OF 17.4M
- (A) TO (D) Is with 650KG Hook block reeved on the mainboom
- (E) With mainboom/14.8t counterweight and swing away jib mounted  
in the working position = fixed on boom head =  
MAINBOOM TO THE REAR/BOOM ANGLE TO STEEP POSITION =  $84^{\circ}$   
BOOM FULLY RETRACTED = 0 TELESCOPE
- (F) With mainboom/14.8t counterweight and swing away jib mounted  
in the working position = fixed on boom head =  
MAINBOOM TO THE FRONT/BOOM ANGLE TO FLAT POSITION =  $0 - 5^{\circ}$   
BOOM TELESCOPED 4.725M WITH SECTION 1 = BOOM LENGTH OF 17.4M  
PLUS 10/16M SWING AWAY JIB
- (G) With mainboom/10.0t counterweight and swing away jib mounted  
in the working position = fixed on boom head =  
MAINBOOM TO THE REAR/BOOM ANGLE TO STEEP POSITION =  $84^{\circ}$   
BOOM FULLY RETRACTED = 0 TELESCOPE
- (H) With mainboom/10.0t counterweight and swing away jib mounted  
in the working position = fixed on boom head =  
MAINBOOM TO THE FRONT/BOOM ANGLE TO FLAT POSITION =  $0 - 5^{\circ}$   
BOOM TELESCOPED 2.5M WITH SECTION 1 = BOOM LENGTH OF 15.15M  
PLUS 10/16M SWING AWAY JIB
- (E) TO (H) Is with 300KG Hook block reeved on 10/16M jib

## (DANGER)

See operating instructions book - read and fully understand  
all conditions BEFORE moving the truck crane when it is rig-  
ged.

# KRUPP KMK 5110

## Hook Elevation Diagram

Main boom and lattice extension - 79 ft.

214

32.6\* lbs.  
Counterweight

79'  
Lattice  
Extension

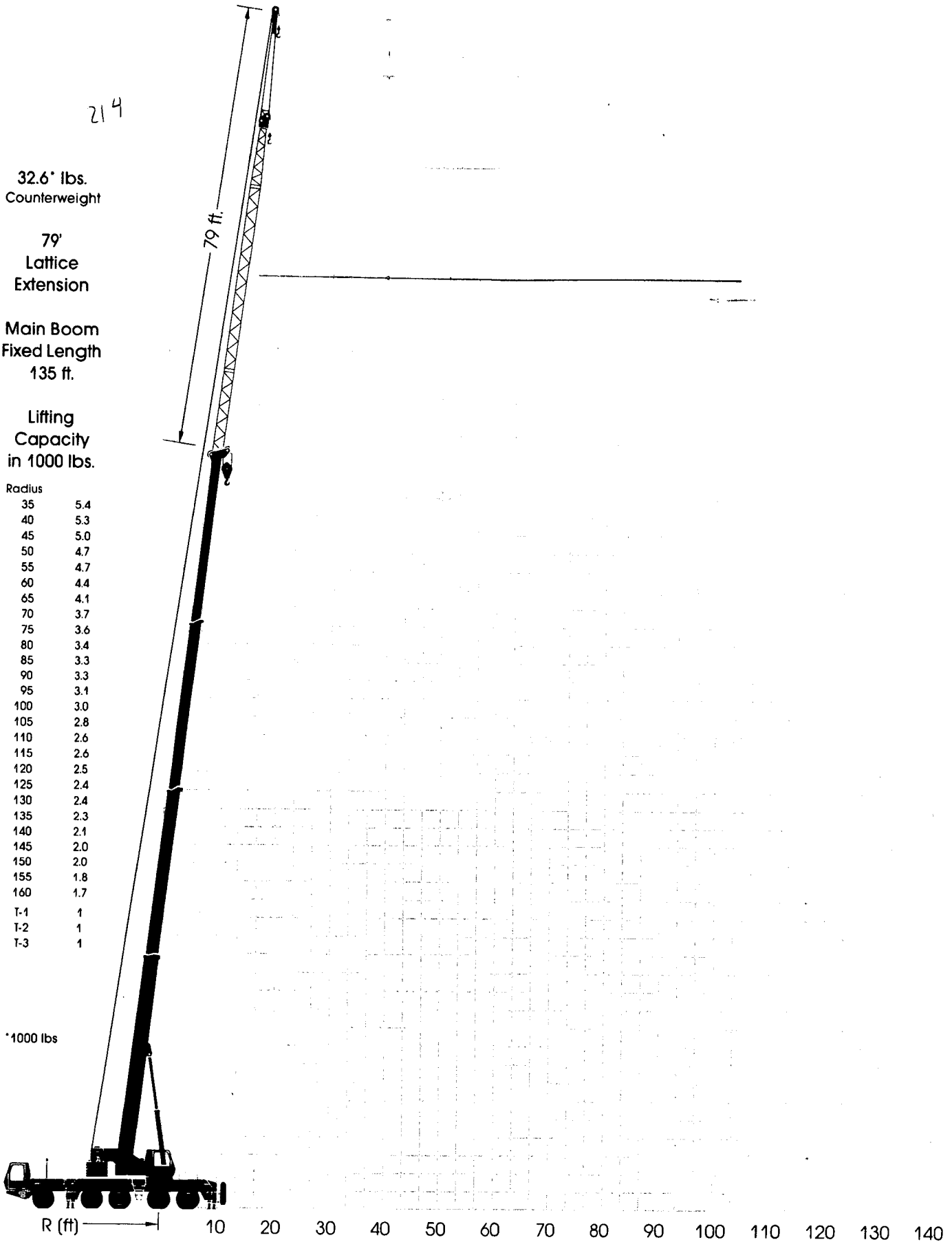
Main Boom  
Fixed Length  
135 ft.

Lifting  
Capacity  
in 1000 lbs.

Radius

|     |     |
|-----|-----|
| 35  | 5.4 |
| 40  | 5.3 |
| 45  | 5.0 |
| 50  | 4.7 |
| 55  | 4.7 |
| 60  | 4.4 |
| 65  | 4.1 |
| 70  | 3.7 |
| 75  | 3.6 |
| 80  | 3.4 |
| 85  | 3.3 |
| 90  | 3.3 |
| 95  | 3.1 |
| 100 | 3.0 |
| 105 | 2.8 |
| 110 | 2.6 |
| 115 | 2.6 |
| 120 | 2.5 |
| 125 | 2.4 |
| 130 | 2.4 |
| 135 | 2.3 |
| 140 | 2.1 |
| 145 | 2.0 |
| 150 | 2.0 |
| 155 | 1.8 |
| 160 | 1.7 |
| T-1 | 1   |
| T-2 | 1   |
| T-3 | 1   |

\*1000 lbs




# KRUPP KMK 5110


## Main Boom

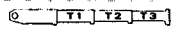
### Reduced Outrigger Base - 17'2" × 26'9"

Lifting capacities in 1000 lbs



**42 - 135 ft**





**360°**

**32.6\***


Counterweight lbs

| Radius<br>ft | 42 ft | 57 ft | 73 ft | 73 ft | 73 ft | 104 ft | 104 ft | 135 ft | Radius<br>ft |
|--------------|-------|-------|-------|-------|-------|--------|--------|--------|--------------|
| 10           |       |       |       |       |       |        |        |        | 10           |
| 15           | 211.4 | 146.7 |       |       |       |        |        |        | 15           |
| 20           | 160.7 | 146.7 |       |       |       |        |        |        | 20           |
| 25           | 107.4 | 104.4 | 87.3  | 101.5 | 67.9  | 63.1   | 38.8   |        | 25           |
| 30           | 70.9  | 68.4  | 70.2  | 66.9  | 66.9  | 59.5   | 38.8   |        | 30           |
| 35           | 50.7  | 48.4  | 50.0  | 47.1  | 52.8  | 49.6   | 35.7   | 34.0   | 35           |
| 40           |       | 36.5  | 37.9  | 35.3  | 40.5  | 37.5   | 31.2   | 33.2   | 40           |
| 45           |       | 28.4  | 29.6  | 27.3  | 32.0  | 29.3   | 27.7   | 30.2   | 45           |
| 50           |       | 22.7  | 23.8  | 21.6  | 25.9  | 23.5   | 25.2   | 26.2   | 50           |
| 55           |       |       | 19.4  | 17.3  | 21.5  | 19.1   | 23.3   | 21.6   | 55           |
| 60           |       |       | 16.0  | 13.9  | 18.0  | 15.6   | 20.5   | 18.1   | 60           |
| 65           |       |       | 13.2  | 11.2  | 15.2  | 12.9   | 17.6   | 15.3   | 65           |
| 70           |       |       | 10.9  | 9.0   | 12.8  | 10.6   | 15.3   | 13.0   | 70           |
| 75           |       |       |       |       |       | 8.7    | 13.3   | 11.0   | 75           |
| 80           |       |       |       |       |       | 7.1    | 11.6   | 9.3    | 80           |
| 85           |       |       |       |       |       | 5.7    | 10.1   | 7.9    | 85           |
| 90           |       |       |       |       |       | 4.5    | 8.9    | 6.7    | 90           |
| 95           |       |       |       |       |       | 3.4    | 7.8    | 5.6    | 95           |
| 100          |       |       |       |       |       |        | 6.8    | 4.6    | 100          |
| 105          |       |       |       |       |       |        |        | 3.8    | 105          |
| 110          |       |       |       |       |       |        |        | 3.0    | 110          |
| 115          |       |       |       |       |       |        |        | 2.3    | 115          |
| 120          |       |       |       |       |       |        |        | 1.7    | 120          |


|  |    |   |     |     |   |   |   |   |   |
|--|----|---|-----|-----|---|---|---|---|---|
|  | T1 | 0 | 0.5 | 0.5 | 1 | 0 | 1 | 0 | 1 |
|  | T2 | 0 | 0   | 0.5 | 0 | 1 | 1 | 1 | 1 |
|  | T3 | 0 | 0   | 0   | 0 | 0 | 0 | 1 | 1 |

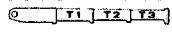
|  |    |   |     |     |   |   |   |   |   |
|--|----|---|-----|-----|---|---|---|---|---|
|  | T1 | 0 | 0.5 | 0.5 | 1 | 0 | 1 | 0 | 1 |
|  | T2 | 0 | 0   | 0.5 | 0 | 1 | 1 | 1 | 1 |
|  | T3 | 0 | 0   | 0   | 0 | 0 | 0 | 1 | 1 |

\* over rear only



**42 - 135 ft**





**360°**

**22.0\***

Counterweight lbs

| Radius<br>ft | 42 ft | 57 ft | 73 ft | 73 ft | 73 ft | 104 ft | 104 ft | 135 ft | Radius<br>ft |
|--------------|-------|-------|-------|-------|-------|--------|--------|--------|--------------|
| 10           |       |       |       |       |       |        |        |        | 10           |
| 15           | 209.1 | 146.7 |       |       |       |        |        |        | 15           |
| 20           | 153.2 | 146.7 |       |       |       |        |        |        | 20           |
| 25           | 91.1  | 88.2  | 87.3  | 86.5  | 67.9  | 63.1   | 38.8   |        | 25           |
| 30           | 59.5  | 57.0  | 58.8  | 55.6  | 62.0  | 58.5   | 38.8   |        | 30           |
| 35           | 42.0  | 39.8  | 41.3  | 38.5  | 44.2  | 41.0   | 35.7   | 34.0   | 35           |
| 40           |       | 29.6  | 30.9  | 28.5  | 33.5  | 30.6   | 31.2   | 33.2   | 40           |
| 45           |       | 22.7  | 23.9  | 21.6  | 26.1  | 23.6   | 27.7   | 26.4   | 45           |
| 50           |       | 17.8  | 18.9  | 16.8  | 21.1  | 18.6   | 23.8   | 21.3   | 50           |
| 55           |       |       | 15.1  | 13.0  | 17.2  | 14.8   | 19.8   | 17.4   | 55           |
| 60           |       |       | 12.2  | 10.1  | 14.1  | 11.8   | 16.7   | 14.3   | 60           |
| 65           |       |       | 9.8   | 7.8   | 11.7  | 9.4    | 14.2   | 11.8   | 65           |
| 70           |       |       | 7.8   | 5.8   | 9.7   | 7.5    | 12.1   | 9.8    | 70           |
| 75           |       |       |       |       |       | 5.8    | 10.4   | 8.1    | 75           |
| 80           |       |       |       |       |       | 4.4    | 8.9    | 6.7    | 80           |
| 85           |       |       |       |       |       | 3.2    | 7.7    | 5.4    | 85           |
| 90           |       |       |       |       |       | 2.2    | 6.6    | 4.4    | 90           |
| 95           |       |       |       |       |       |        | 5.6    | 3.4    | 95           |
| 100          |       |       |       |       |       |        | 4.8    | 2.6    | 100          |
| 105          |       |       |       |       |       |        |        |        | 105          |
| 110          |       |       |       |       |       |        |        |        | 110          |
| 115          |       |       |       |       |       |        |        |        | 115          |
| 120          |       |       |       |       |       |        |        |        | 120          |

|  |    |   |     |     |   |   |   |   |   |
|--|----|---|-----|-----|---|---|---|---|---|
|  | T1 | 0 | 0.5 | 0.5 | 1 | 0 | 1 | 0 | 1 |
|  | T2 | 0 | 0   | 0.5 | 0 | 1 | 1 | 1 | 1 |
|  | T3 | 0 | 0   | 0   | 0 | 0 | 0 | 1 | 1 |

|  |    |   |     |     |   |   |   |   |   |
|--|----|---|-----|-----|---|---|---|---|---|
|  | T1 | 0 | 0.5 | 0.5 | 1 | 0 | 1 | 0 | 1 |
|  | T2 | 0 | 0   | 0.5 | 0 | 1 | 1 | 1 | 1 |
|  | T3 | 0 | 0   | 0   | 0 | 0 | 0 | 1 | 1 |

\*1000 lbs

# KRUPP KMK 5110

## Main Boom + Swing-Away Extension

### 30° Offset

Lifting capacities in 1000 lbs



33 - 52 ft



360°

Counterweight **32.6\***  
lbs

| Radius<br>ft | Main boom fixed length in ft   |               |                                |               | Radius<br>ft |
|--------------|--------------------------------|---------------|--------------------------------|---------------|--------------|
|              | Lattice extension length 33 ft |               | Lattice extension length 52 ft |               |              |
|              | 119 ft<br>30°                  | 135 ft<br>30° | 119 ft<br>30°                  | 135 ft<br>30° |              |
| 30           |                                |               |                                |               | 30           |
| 35           |                                |               |                                |               | 35           |
| 40           | 13.3                           |               |                                |               | 40           |
| 45           | 13.3                           |               |                                |               | 45           |
| 50           | 13.3                           |               |                                |               | 50           |
| 55           | 13.2                           | 10.9          |                                |               | 55           |
| 60           | 12.6                           | 10.9          |                                |               | 60           |
| 65           | 12.1                           | 10.5          | 6.1                            | 6.1           | 65           |
| 70           | 11.7                           | 10.2          | 6.1                            | 6.1           | 70           |
| 75           | 11.3                           | 9.9           | 6.1                            | 6.1           | 75           |
| 80           | 10.9                           | 9.6           | 6.1                            | 6.1           | 80           |
| 85           | 10.6                           | 9.3           | 6.1                            | 6.1           | 85           |
| 90           | 10.3                           | 9.0           | 6.1                            | 6.1           | 90           |
| 95           | 10.0                           | 8.8           | 6.0                            | 6.1           | 95           |
| 100          | 9.7                            | 8.5           | 5.9                            | 6.1           | 100          |
| 105          | 9.5                            | 8.2           | 5.8                            | 6.1           | 105          |
| 110          | 8.6                            | 8.0           | 5.8                            | 6.0           | 110          |
| 115          | 7.6                            | 7.8           | 5.7                            | 5.9           | 115          |
| 120          | 6.8                            | 7.6           | 5.7                            | 5.8           | 120          |
| 125          | 5.9                            | 7.3           | 5.6                            | 5.8           | 125          |
| 130          | 5.1                            | 6.5           | 5.6                            | 5.7           | 130          |
| 135          | 4.3                            | 5.7           | 5.5                            | 5.6           | 135          |
| 140          |                                | 4.9           | 5.4                            | 5.5           | 140          |
| 145          |                                | 4.2           | 4.7                            | 5.1           | 145          |
| 150          |                                | 3.6           | 4.1                            | 4.4           | 150          |
| 155          |                                | 3.0           | 3.5                            | 3.8           | 155          |
| 160          |                                |               | 2.9                            | 3.3           | 160          |
|              |                                |               |                                | 2.7           |              |
|              | T1                             | 1             | 1                              | 1             | T1           |
|              | T2                             | 1             | 1                              | 1             | T2           |
|              | T3                             | 0.5           | 1                              | 0.5           | T3           |



33 - 52 ft



360°

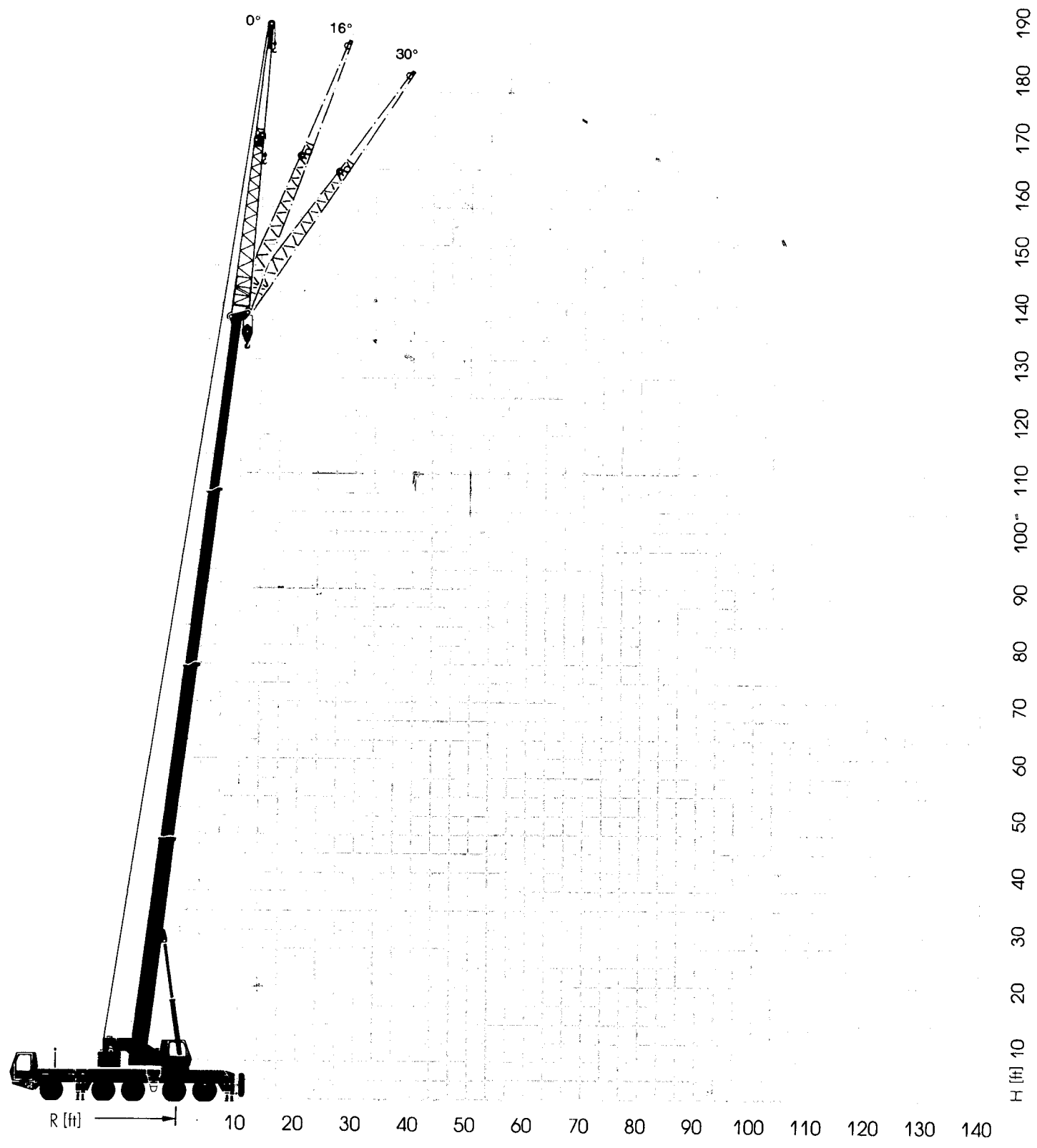
Counterweight **22.0\***  
lbs

| Radius<br>ft | Main boom fixed length in ft   |               |                                |               | Radius<br>ft |
|--------------|--------------------------------|---------------|--------------------------------|---------------|--------------|
|              | Lattice extension length 33 ft |               | Lattice extension length 52 ft |               |              |
|              | 119 ft<br>30°                  | 135 ft<br>30° | 119 ft<br>30°                  | 135 ft<br>30° |              |
| 30           |                                |               |                                |               | 30           |
| 35           |                                |               |                                |               | 35           |
| 40           | 13.3                           |               |                                |               | 40           |
| 45           | 13.3                           |               |                                |               | 45           |
| 50           | 13.3                           |               |                                |               | 50           |
| 55           | 13.2                           | 10.9          |                                |               | 55           |
| 60           | 12.6                           | 10.9          |                                |               | 60           |
| 65           | 12.1                           | 10.5          | 6.1                            | 6.1           | 65           |
| 70           | 11.7                           | 10.2          | 6.1                            | 6.1           | 70           |
| 75           | 11.3                           | 9.9           | 6.1                            | 6.1           | 75           |
| 80           | 10.9                           | 9.6           | 6.1                            | 6.1           | 80           |
| 85           | 10.6                           | 9.3           | 6.1                            | 6.1           | 85           |
| 90           | 10.3                           | 9.0           | 6.1                            | 6.1           | 90           |
| 95           | 9.5                            | 8.8           | 6.0                            | 6.1           | 95           |
| 100          | 8.3                            | 8.5           | 5.9                            | 6.1           | 100          |
| 105          | 7.3                            | 8.2           | 5.8                            | 6.1           | 105          |
| 110          | 6.4                            | 7.8           | 5.8                            | 6.0           | 110          |
| 115          | 5.5                            | 7.8           | 5.7                            | 5.9           | 115          |
| 120          | 4.8                            | 6.0           | 5.7                            | 5.8           | 120          |
| 125          | 4.0                            | 5.2           | 5.6                            | 5.8           | 125          |
| 130          | 3.2                            | 4.5           | 4.9                            | 5.2           | 130          |
| 135          | 2.5                            | 3.8           | 4.3                            | 4.6           | 135          |
| 140          |                                | 3.1           | 3.6                            | 4.0           | 140          |
| 145          |                                | 2.5           | 3.0                            | 3.4           | 145          |
| 150          |                                |               |                                | 2.8           | 150          |
| 155          |                                |               |                                | 2.2           | 155          |
| 160          |                                |               |                                |               | 160          |
|              | T1                             | 1             | 1                              | 1             | T1           |
|              | T2                             | 1             | 1                              | 1             | T2           |
|              | T3                             | 0.5           | 1                              | 0.5           | T3           |

# KRUPP KMK 5110

## Hook Elevation Diagram

Main boom and lattice extension  
0-16-30° Offsets



KMK 3045 - 4070 - 5090

INSTALLATION OF 30° OFFSET JIB

1. Install swing away on the head in the normal manner.
2. Support the weight of the jib by means of an auxiliary crane or by putting the tip of the jib on the ground or similar surface.
3. Remove pins #1, #2 - Fig. "A".
4. Boom up to 18° to 20° leaving the tip of the jib on the ground. Install side brackets left and right with pins #1 and #3 as shown in Fig. "B".
5. Boom up until the tip of the jib comes off the ground or auxiliary crane. Install pin #2 as shown in Fig. "C". From the ground the jib should look like Fig. "D".

Note: Put information into S.L.I. for 30° offset operation.

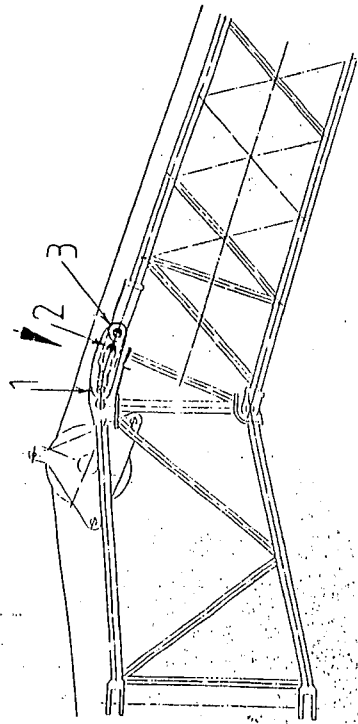
If you wish to operate the jib at 16° after 30° operation it is not necessary to remove the links.

1. Boom down until the tip of the jib is just off the ground and remove pin #2.
2. Boom down until the jib is at 16°. Install pin #2 as in Fig. "B". Jib is now in 16° working position.

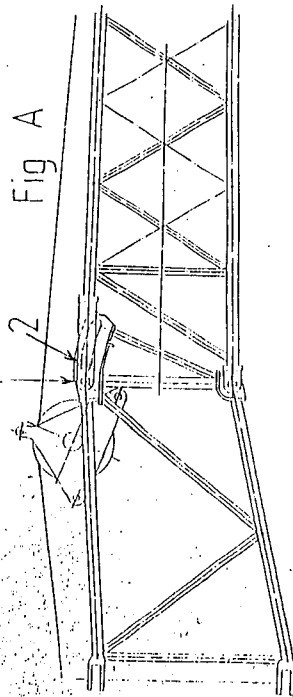
To return jib to 0° position.

1. Boom down until the tip of the jib is supported on the ground or with auxiliary crane.
2. Remove all 3 pins and side brackets (both sides of jib).
3. Boom down until jib is at 0° and install pins #1 and #2 as per Fig. "A".

15° Offset



1° Offset



30° Offset

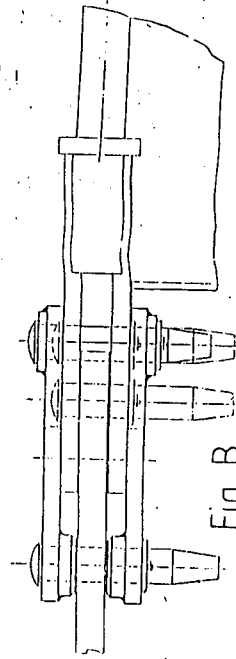
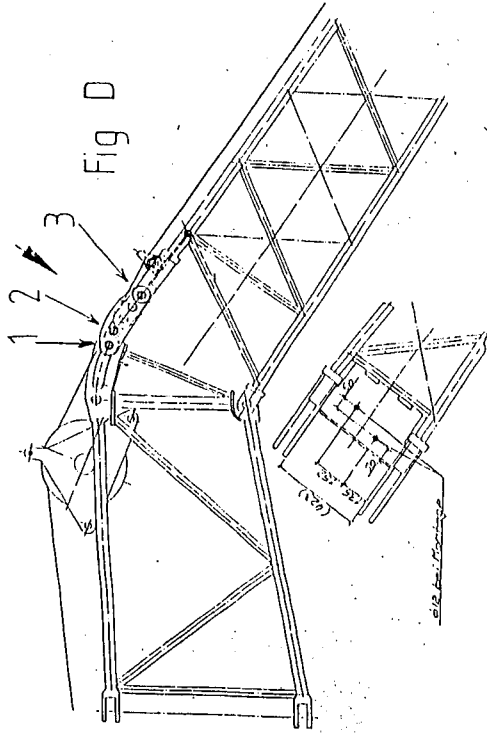


Fig B

1 2 3

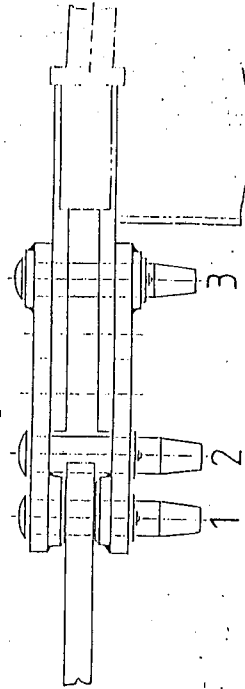


Fig C

KMK 5090 - 4070

|         |    |           |         |
|---------|----|-----------|---------|
| 7255312 | SL | Arboc 30° | 10/49   |
|         |    | 122       |         |
|         |    | KPU       | 7255312 |