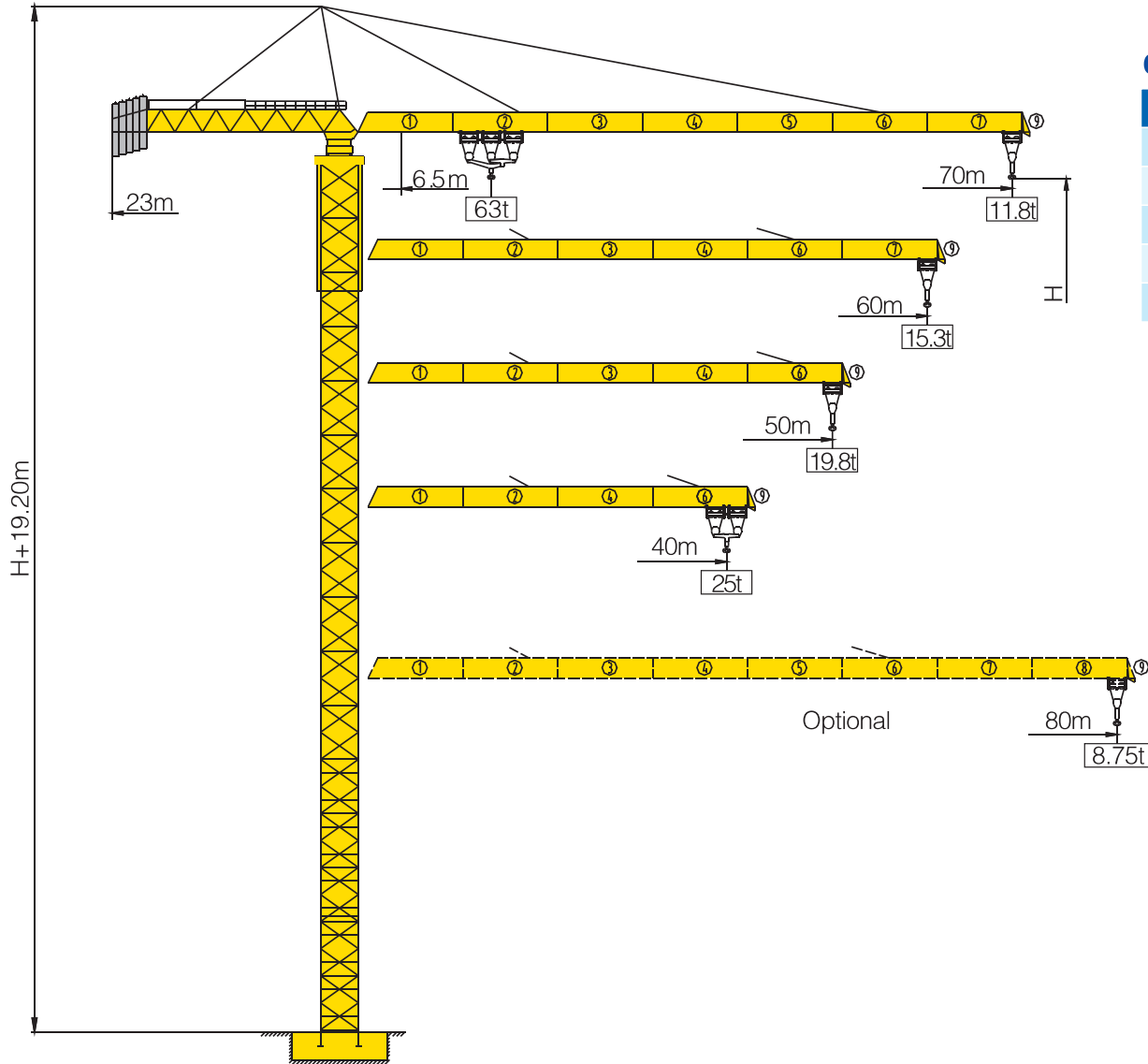


D1100-50



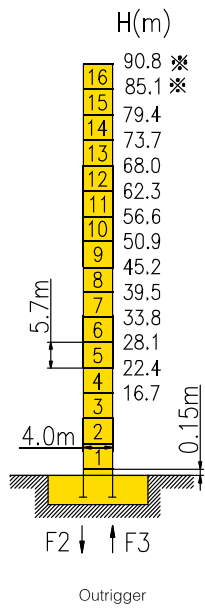
Counter-jib ballast

			(Kg)	PHZ13750	PHZ9500	PHZ7500
80m	23m	68750	5	0	0	
70m	23m	62500	4	0	1	
60m	23m	52000	2	1	2	
50m	23m	45750	1	1	3	
40m	23m	34000	0	2	2	

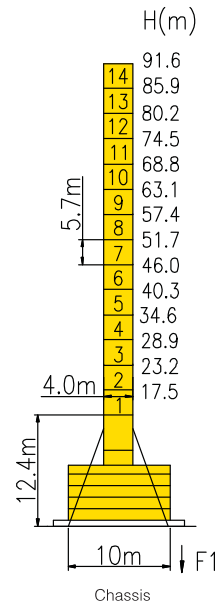
Working Height(m) @ Wall-tie Location(m)

Model Detail	Mast Code	Wall-tie #1	Wall-tie #2	Wall-tie #3
D1100-50	D1100.13	130.7 @ 74.25	170.6 @ 114.15	210.5 @ 154.05

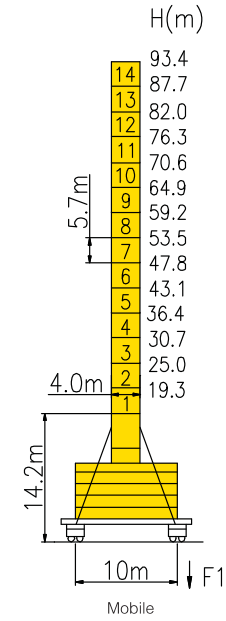
Masts Reactions



Outrigger	
F2	● 433.6t
	■ 375.5t
F3	● 223.5t
	■ 205.3t
⊗	297t



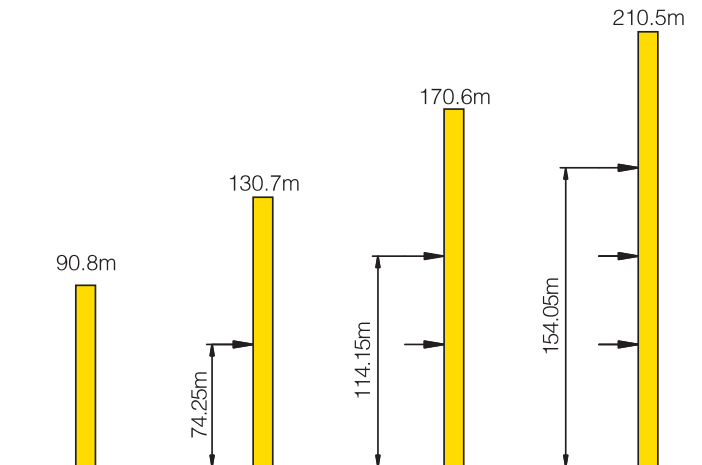
Chassis	
F1	● 255t
	■ 220t
⊗	336t




Mobile	
F1	● 263t
	■ 228t
⊗	368t

● Reactions in service ■ Reactions out of service
 ⊗ Without load and ballast with longest jib and maximum height
 ⊕ For more erecting solutions, consult us!




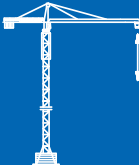


Anchorage



Load diagrams

		Max.Capacity m/t	15	20	25	30	35	40	45	50	55	60	65	70	75	80
80m (R=82.90)	⌋	5.4—35.33m 25t	25					21.6	18.7	16.5	14.6	13.1	11.8	10.8	9.8	9.0
	⌋⌋	5.4—18.61m 50t	50	46.5	35.3	28.1	23.0	19.3	16.5	14.2	12.4	10.9	9.6	8.5	7.6	6.8
70m (R=72.90)	⌋	5.4—38.38m 25t	25					23.8	20.7	18.2	16.2	14.6	13.2	12.0		
	⌋⌋	5.4—20.40m 50t	50	39.0	31.1	25.6	21.6	18.5	16.0	14.0	12.4	11.0	9.8			
60m (R=62.90)	⌋	5.4—40.30m 25t	25					22.0	19.4	17.3	15.5					
	⌋⌋	6.5—21.37m 50t	50	41.3	33.0	27.2	23.0	19.7	17.1	15.0	13.3					
50m (R=52.90)	⌋	5.4—41.53m 25t	25					22.8	20.0							
	⌋⌋	5.4—22.0m 50t	50	42.8	34.3	28.3	23.9	20.5	17.8							
40m (R=42.90)	⌋	5.4—40.00m 25t	25													
	⌋⌋	5.4—22.0m 50t	50	42.8	34.3	28.3	23.9									

Mechanisms

		Hoisting		QPL4272
	Slewing	HP185		
	0 ~ 0.6 r/min	3 × 18.5 kW (80m Jib)	2 × 18.5 kW (others)	
	Trolleying	BP185		
	0 ~ 50 m/min	18.5 kW		
	Travelling	ZA110 ZB110		
	0 ~ 15 m/min	4 × 11 kW		
 132 kW  600m Ⓞ (5 layers) Ⓞ Consult us If overtop	III	♭	25t	27 m/min
		♭♭	50t	13.5 m/min
	IV	♭	12.5t	54 m/min
		♭♭	25t	27 m/min
	v	♭	5t	67.5 m/min
♭♭	10t	33.75 m/min		
	380V(+10%~10%) 50Hz		187.5+4 × 11 kW	