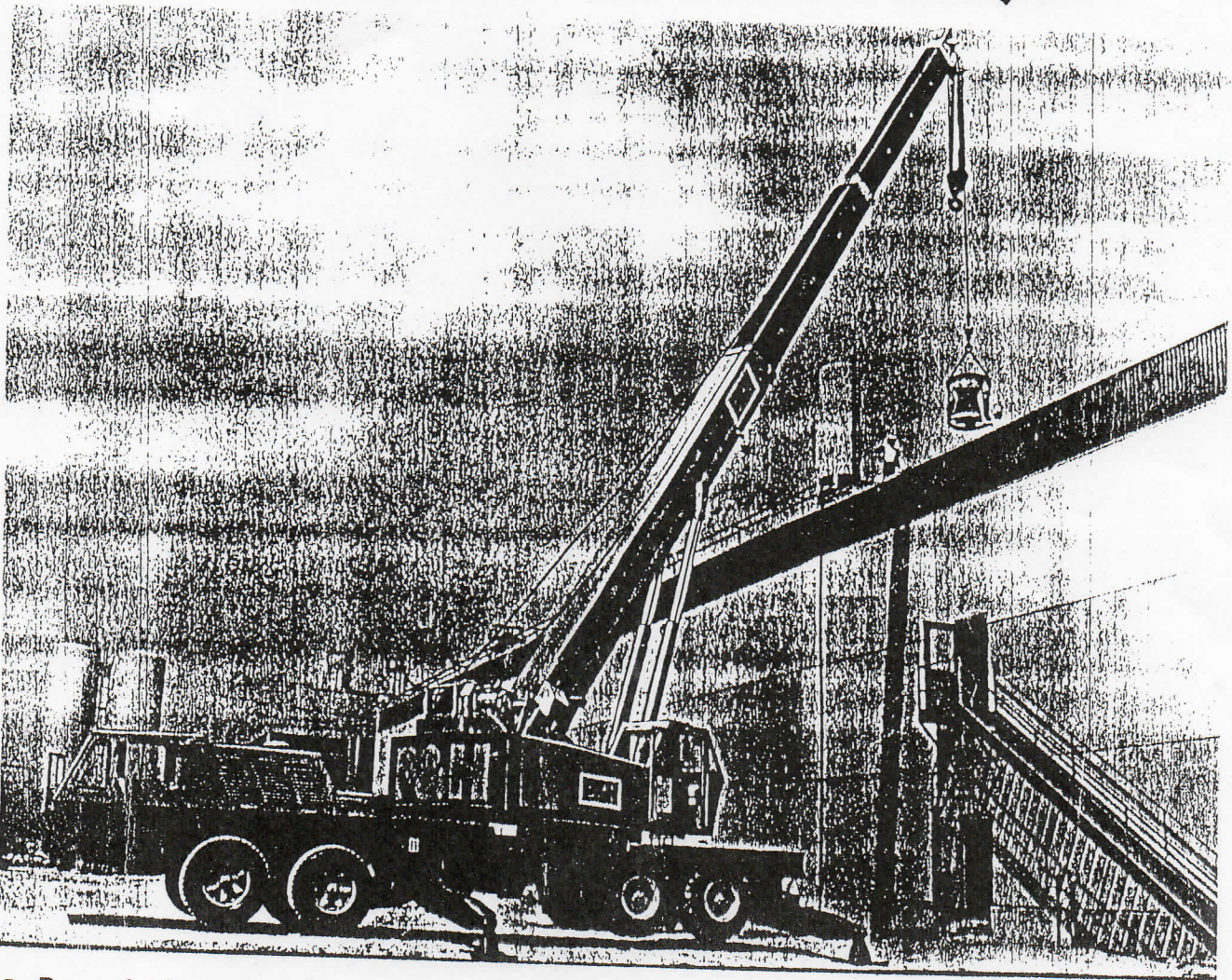


P&H® T-600XL

60-ton hydraulic truck crane
182-ft. maximum boom and jib



- Powerful Harnischfeger-built 8 x 4 carrier with road speeds to 49 mph (78.8 kmh)
- Standard 36' to 114' (10.9 to 34.7 m) telescopic powered boom with manually pinned fly section that can be hydraulically extended or retracted.
- Optional 33' (10.1 m) swing-around boom extension . . . plus add-on 15' (4.6 m), 25' (7.6 m) or 35' (10.7 m) lattice jib. Maximum tip height of boom, extension and jib 188' (57.3 m).
- P&H 2-speed winches with integral controlled free-fall
- Exclusive P&H Volu-Matik® hydraulic system.
- Pressure-compensated valves for more precise control of winching, booming and telescoping.
- Independent swing with foot-operated, hydraulically applied swing brake for smooth, precise operation.
- Exclusive P&H outriggers with independent horizontal and vertical motions, and self-storing floats.

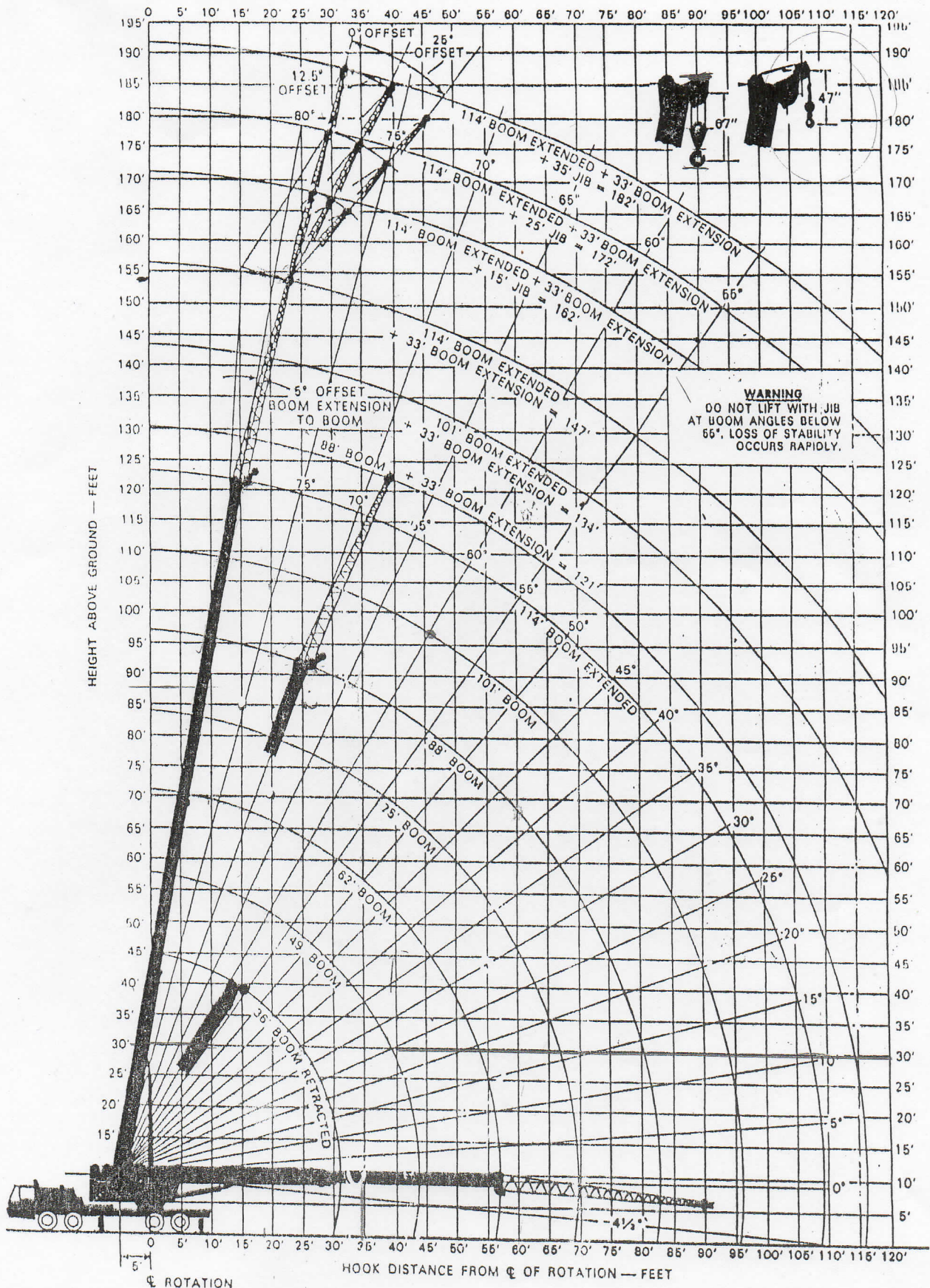
specifications

1 W
as
EQU
88
RAT
500
57000
53000
50000
11000
12900
14100
8200
4400
1500
7300
4200
2400

ION PLATE
LESS THAN
PH
FRAY LIN
ON MAN

working ranges

Crane T-600 x L 6003



ed crane loads in pounds — main boom in over side and over rear work areas with outriggers fully extended and set

POWERED BOOM LENGTH IN FEET

ALL THREE POWERED SECTIONS EXTENDED EQUALLY

LOAD IN FEET	36			42			49			62			75			86			101			114			134 (SEE WARNING NOTE 1)			147 (SEE WARNING NOTE 1)			
	RATED LOAD POUNDS		LOADED BOOM ANGLE Δ°	RATED LOAD POUNDS		LOADED BOOM ANGLE Δ°	RATED LOAD POUNDS		LOADED BOOM ANGLE Δ°	RATED LOAD POUNDS		LOADED BOOM ANGLE Δ°	RATED LOAD POUNDS		LOADED BOOM ANGLE Δ°	RATED LOAD POUNDS		LOADED BOOM ANGLE Δ°	RATED LOAD POUNDS		LOADED BOOM ANGLE Δ°	RATED LOAD POUNDS		LOADED BOOM ANGLE Δ°	RATED LOAD POUNDS		LOADED BOOM ANGLE Δ°				
	SIDE	REAR		SIDE	REAR		SIDE	REAR		SIDE	REAR		SIDE	REAR		SIDE	REAR		SIDE	REAR		SIDE	REAR		SIDE	REAR		SIDE	REAR	SIDE	REAR
70	120000	120000	73	97000	97000	76	92000	92000	79	86000	86000																				
66	105000	105000	70	90000	90000	73	86000	86000	77	81000	81000	80	77000	77000																	
63	93000	93000	67	83000	83000	71	80000	80000	75	76000	76000	78	73000	73000																	
59	80000	80000	64	76000	76000	68	74000	74000	73	71000	71000	77	68000	68000	78	57000	57000														
55	70000	70000	61	69000	69000	65	68000	68000	71	67000	67000	75	64000	64000	78	53000	53000	80	46000	46000											
50	62000	62000	57	61000	61000	63	60000	60000	69	59000	59000	74	58000	58000	77	50000	50000	79	44000	44000											
33	47000	47000	48	46000	46000	56	45000	45000	64	44000	44000	69	43000	43000	73	41000	41000	75	37000	37000	80	18000	18000								
18	32900	34900	37	32900	34900	48	32900	34900	59	32900	34900	65	32900	34900	70	32900	34900	73	32000	32000	75	25000	25000	78	14000	14000					
			22	24100	26400	39	24100	26400	53	24100	26400	61	24100	26400	66	24100	26400	70	24100	26400	73	22000	22000	76	12000	12000					
						27	18200	20700	46	18200	20700	51	14400	16700	58	14400	16700	63	14400	16700	67	14400	16700	72	10000	10000					
									39	14400	16700	46	11500	13500	54	11500	13500	60	11500	13500	64	11500	13500	69	9200	9200					
									30	11500	13500	46	7300	8600	45	7300	8600	53	7300	8600	58	7300	8600	65	8000	8000					
												2	4200	5700	34	4200	5700	45	4200	5700	52	4200	5700	60	7000	7000					

WARNING

1. FOR BOOM LENGTHS LESS THAN 134 FEET AND LESS THAN 147 FEET THE 33 FOOT BOOM EXTENSION RATED LOADS ARE DETERMINED BY BOOM ANGLE ONLY IN THE COLUMN HEADERS BY 134 FOOT BOOM AND 147 FOOT BOOM RESPECTIVELY FOR ANGLES NOT SHOWN, USE RATING OF NEXT LOWER BOOM ANGLE.

32D810

WARNING: DO NOT EXCEED 109 FOOT RADIUS OVER SIDE (WITH OR WITHOUT HOOK BLOCK) OR A TIPPING CONDITION WILL OCCUR.

on rubber . . . with 8,700 lbs. counterweight rated crane loads in pounds — main boom — without outriggers

LOAD RADIUS IN FEET	STATIC RATINGS		TRAVEL RATINGS	
	OVER REAR	OVER SIDE	OVER REAR WITH HOUSE LOCK ENGAGED	5 MPH MAX.
12	43800	25600	42000	26100
14	35200	19800	33800	23500
16	29200	13800	28000	21200
18	23700	10200	22700	19100
20	19700	7600	18900	17600
25	13100	3700	12600	12200
30	8700	1200		
35	5900			
40	4000			
45	2700			
50	1500			

DO NOT EXCEED A 55 FT. RADIUS WITH OR WITHOUT HOOK BLOCK OR A TIPPING CONDITION WILL OCCUR.

DO NOT EXCEED A 40 FT. RADIUS WITH OR WITHOUT HOOK BLOCK OR A TIPPING CONDITION WILL OCCUR. WHEN TRAVELING THE MACHINE WITH A LOAD, THE MACHINE MUST BE ON FIRM LEVEL GROUND WITH A FULLY RETRACTED BOOM AND THE LOAD AS CLOSE TO THE REAR OF MACHINE AS POSSIBLE AND RESTRAINED FROM SWINGING.

32D810

SIZE	TIRE INFLATION	
	STATIC	CREEP 5 MPH
12.00x20	18PR 115 PSI	115 PSI
16.50x22.5	16PR 100 PSI	100 PSI
14.50x20	18PR 105 PSI	105 PSI
		35 PSI

CRANE LOAD RATINGS WITHOUT OUTRIGGERS DEPEND ON TIRE CAPACITY AND CONDITION OF TIRES AND INFLATED PER TABLE. IT IS RECOMMENDED THAT OUTRIGGERS BE EXTENDED AS FAR AS POSSIBLE AND CLEAR OF GROUND AND THAT THE SHORTEST POSSIBLE BOOM LENGTH BE EMPLOYED WHEN LIFTING ON RUBBER. ALL RATINGS DO NOT EXCEED 75% OF TIP.

- (1) ST. AREAS OF CONTRACTION MUST BE WORKING RANGE.
- (2) CREEP IS HAZARDOUS FOR LESS THAN 100 FT. IN A 30 MIN PERIOD WHILE TRAVELING.
- (3) RATINGS ABOVE THE HOUSE LIMIT ARE BASED ON STRUCTURAL CAPABILITY AND NOT ON MACHINE CAPABILITY.

PCSA CLASS 10 - 199

PLUMA MANUAL CON 3,946 Kg. DE CONTRAPESO

RANGOS DE CAPACIDAD DE CARGA EN KG. - PLUMA PRINCIPAL EN AREAS DE TRABAJO LATERALES Y TRASERAS CON ESTABILIZADORES TOTALMENTE EXTENDIDOS

EN S	LONGITUD DE PLUMA EN METROS - EXTENSION MANUAL RETRAIDA AMBAS SECCIONES DE PLUMA EXTENDIDAS IGUALMENTE												EXTENSION MANUAL				10.06 M. DE PLUMA MANUAL-RETRAIDA				10.06 M. DE PLUMA MANUAL-EXTENDIDA																		
	10.97			12.80			14.93			18.90			22.86			26.82			34.75 (VER NOTA 1)			36.88 (VER NOTA 2)			44.8 (VER NOTA 2)														
	ANGULO DE PLUMA	TRASERA	RANGO DE CARGA EN KG.	ANGULO DE PLUMA	TRASERA	RANGO DE CARGA EN KG.	ANGULO DE PLUMA	LATERAL	TRASERA	RANGO DE CARGA EN KG.	ANGULO DE PLUMA	LATERAL	TRASERA	RANGO DE CARGA EN KG.	ANGULO DE PLUMA	LATERAL	TRASERA	RANGO DE CARGA EN KG.	ANGULO DE PLUMA	LATERAL	TRASERA	RANGO DE CARGA EN KG.	ANGULO DE PLUMA	LATERAL	TRASERA	RANGO DE CARGA EN KG.	ANGULO DE PLUMA	LATERAL	TRASERA	RANGO DE CARGA EN KG.	ANGULO DE PLUMA	LATERAL	TRASERA	RANGO DE CARGA EN KG.	ANGULO DE PLUMA	LATERAL	TRASERA	RADIO EN METROS	
5	69	54,432	54,432	72	43,092	43,092	75	39,917	39,917	79	38,102	38,102																											3.05
6	65	47,628	47,628	69	39,463	39,463	72	37,195	37,195	77	35,834	35,834																											3.66
7	62	42,185	42,185	66	36,288	36,288	70	34,927	34,927	75	33,113	33,113																											4.27
8	58	36,288	36,288	63	33,113	33,113	67	32,206	32,206	73	30,845	30,845																											4.88
9	54	31,752	31,752	60	30,391	30,391	65	29,484	29,484	71	28,577	28,577																											5.49
10	49	28,123	28,123	57	27,870	27,870	62	26,762	26,762	69	25,855	25,855																											6.10
11	37	21,319	21,319	48	20,866	20,866	55	20,412	20,412	64	19,958	19,958																											7.62
12	17	15,649	16,057	36	15,649	16,057	47	15,649	16,057	58	15,649	16,057																											9.14
13	PRECAUCION PARA CARGAS			21	11,703	12,655	38	11,703	12,655	52	11,703	12,655																											10.67
14	CON 10.07 M DE PLUMA LOS			26	9,027	9,934	26	9,027	9,934	46	9,027	9,934																											12.19
15	GATOS DE PLUMA DEBEN									39	7,167	8,029																											13.72
16	ESTAR RETRAIDOS									30	5,670	6,486																											15.24
17										45	5,670	6,486																											18.29
18										32	3,493	4,264																											21.34
19										1	1,950	2,767																											24.38
20																																							27.43
21																																							30.48
22																																							33.22
23																																							36.58
24																																							39.62
25																																							42.67

NOTAS

1. PARA LONGITUDES DE PLUMA MENORES DE 34.75 M. CON LA SECCION MANUAL EXTENDIDA EL RANGO DE CARGA ES DETERMINADO POR EL ANGULO DE LA PLUMA UNICAMENTE EN LA COLUMNA ENCABEZADA POR 34.75 M. DE PLUMA. PARA ANGULOS DE PLUMA NO MOSTRADOS USE EL RANGO DEL ANGULO PROXIMO MENOR.
2. PARA LONGITUDES DE PLUMA MENORES DE 36.88 M. CON LA SECCION MANUAL RETRAIDA Y MENORES DE 44.80 M. CON LA SECCION MANUAL EXTENDIDA EL RANGO DE CARGA DE LOS 10.06 M DE JIB ESTAN DETERMINADOS POR EL ANGULO DE LA PLUMA UNICAMENTE EN LAS COLUMNAS ENCABEZADAS POR 36.88 Y 44.80 M. RESPECTIVAMENTE. PARA ANGULOS NO MOSTRADOS USAR EL ANGULO PROXIMO MENOR.

GRUA P & H MODELO T 600 XL No. DE SERIE 49211