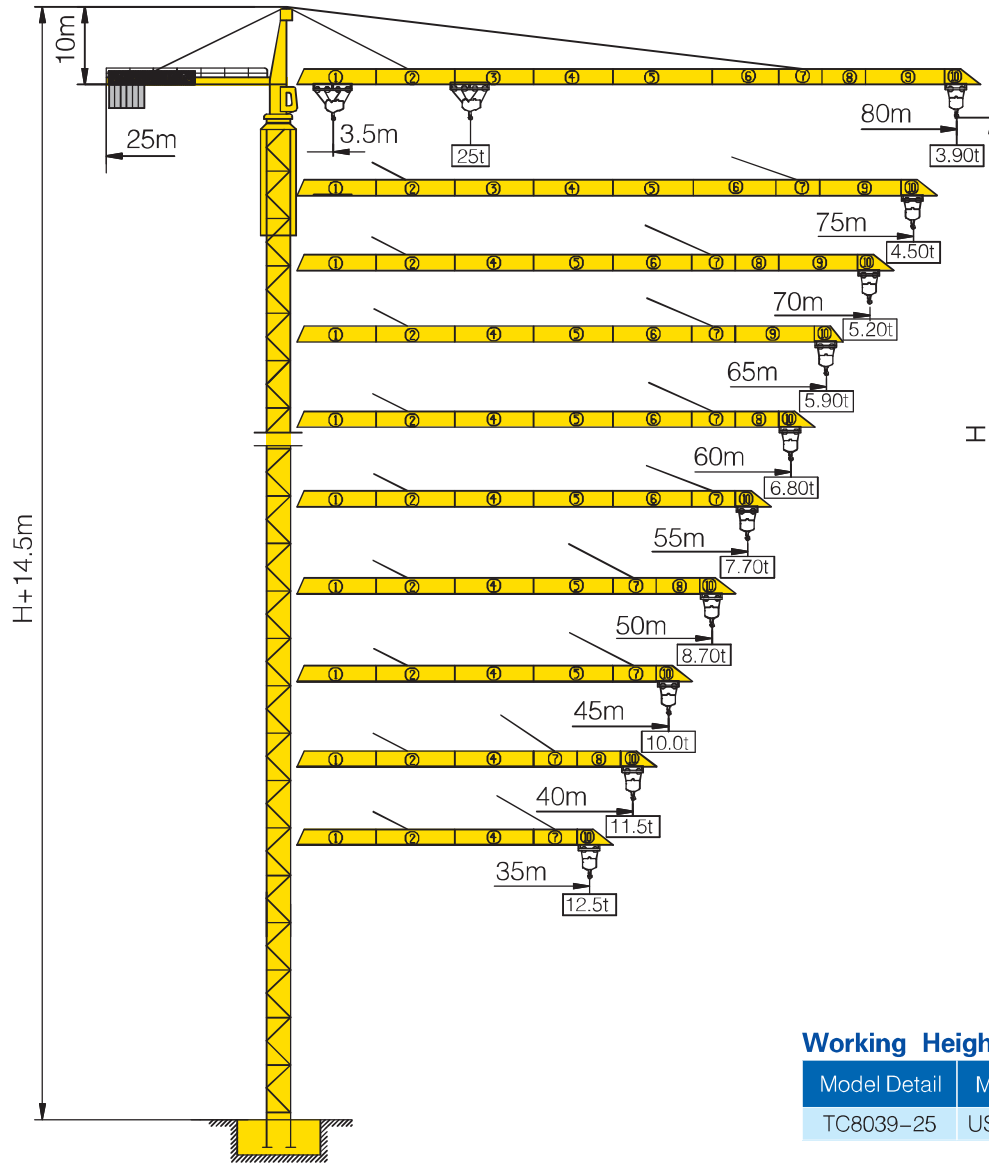


TC8039-25



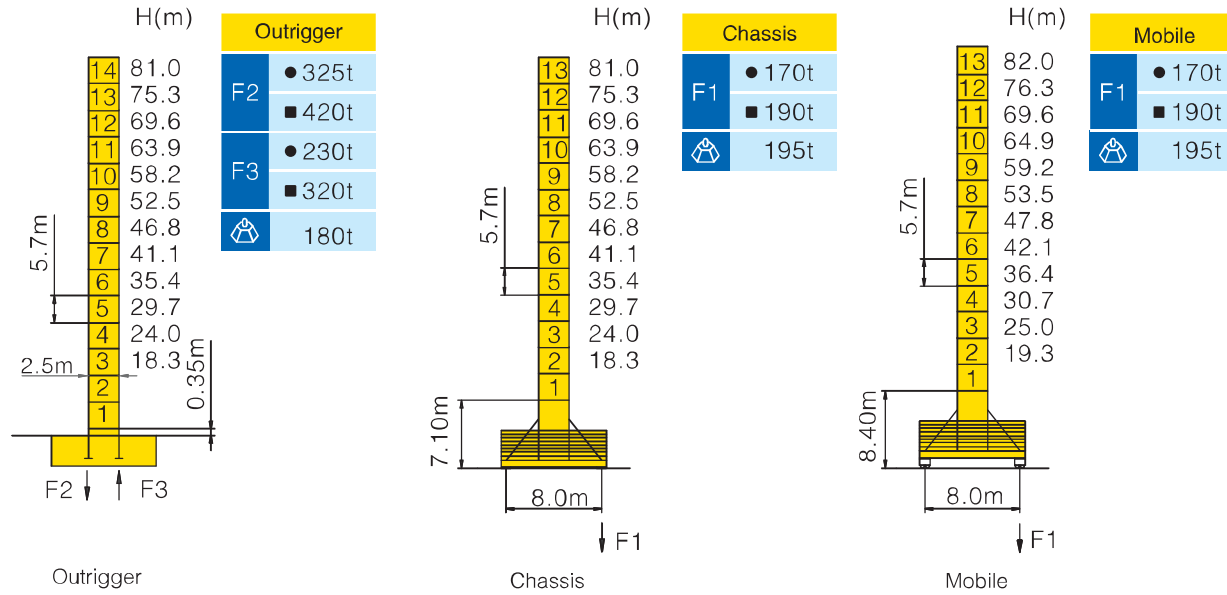
Counter-jib ballast

			(Kg)	PHZ6000	PHZ5000	PHZ3000
80m	25m	35000		2	4	1
75m	25m	32000		2	4	0
70m	25m	27000		2	3	0
65m	25m	24000		1	3	1
60m	25m	23000		0	4	1
55m	25m	20000		0	4	0
50m	25m	16000		1	2	0
45m	25m	14000		1	1	1
40m	25m	11000		1	1	0
35m	25m	9000		1	0	1

Working Height(m) @ Wall-tie Location(m)

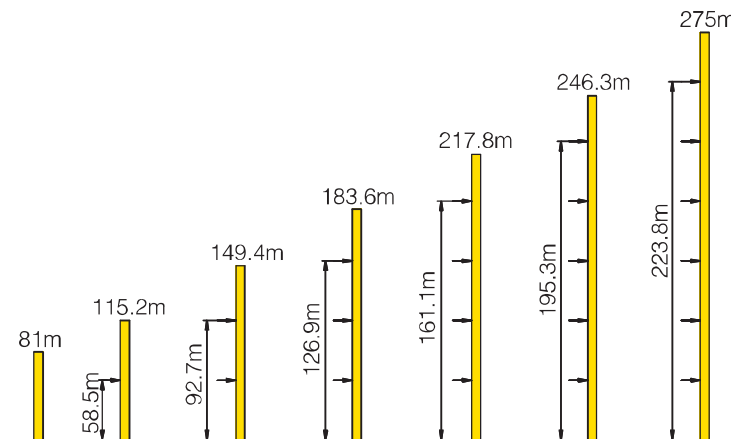
Model Detail	Mast Code	Wall-tie #1	Wall-tie #2	Wall-tie #3	Wall-tie #4	Wall-tie #5	Wall-tie #6
TC8039-25	US8039.13A	115.2 @ 58.5	149.4 @ 92.7	183.6 @ 126.9	217.8 @ 161.1	246.3 @ 195.3	275 @ 223.8

Masts Reactions




● Reactions in service ■ Reactions out of service
 ⊕ Without load and ballast with longest jib and maximum height
 ⊕ For more erecting solutions, consult us!

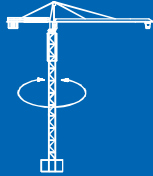
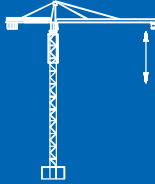
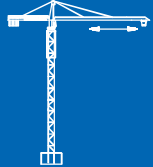


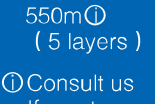

Anchorage



Load diagrams

		Max. Capacity m/t	18.0	20.0	25.0	30.0	35.0	38.0	40.0	43.0	45.0	48.0	50.0	53.0	55.0	58.0	60.0	65.0	70.0	75.0	80.0
80m (R=82.63)	⌋	3.5—31.04m 12.5t	12.50				10.90	9.91	9.33	8.57	8.11	7.51	7.14	6.65	6.35	5.94	5.69	5.14	4.67	4.26	3.90
	⌋⌋	3.5—16.18m 25t	22.10	19.50	14.90	11.90	9.78	8.78	8.20	7.43	6.98	6.37	6.01	5.52	5.22	4.81	4.56	4.01	3.54	3.13	2.77
75m (R=77.63)	⌋	3.5—32.33m 12.5t	12.50				11.40	10.40	9.79	8.99	8.52	7.89	7.51	6.99	6.68	6.26	6.00	5.42	4.93	4.50	
	⌋⌋	3.5—16.83m 25t	23.20	20.50	15.70	12.50	10.30	9.26	8.66	7.86	7.39	6.75	6.38	5.86	5.55	5.13	4.87	4.29	3.80	3.37	
70m (R=72.63)	⌋	3.5—33.68m 12.5t	12.50				12.00	10.90	10.30	9.44	8.95	8.29	7.89	7.36	7.03	6.59	6.32	5.72	5.20		
	⌋⌋	3.5—17.51m 25t	24.30	21.40	16.40	13.20	10.90	9.77	9.14	8.31	7.82	7.16	6.76	6.22	5.90	5.46	5.19	4.58	4.07		
65m (R=67.63)	⌋	3.5—34.53m 12.5t	12.50				12.30	11.20	10.60	9.72	9.22	8.54	8.13	7.58	7.25	6.80	6.52	5.90			
	⌋⌋	3.5—17.94m 25t	24.90	22.10	16.90	13.60	11.20	10.10	9.45	8.59	8.08	7.41	7.00	6.45	6.12	5.66	5.39	4.77			
60m (R=62.63)	⌋	3.5—35.72m 12.5t	12.50				11.70	11.00	10.10	9.59	8.89	8.47	7.90	7.56	7.09	6.80					
	⌋⌋	3.5—18.54m 25t	25.00	22.90	17.60	14.20	11.70	10.50	9.87	8.99	8.46	7.76	7.34	6.77	6.43	5.96	5.67				
55m (R=57.63)	⌋	3.5—36.40m 12.5t	12.50				11.90	11.20	10.30	9.78	9.06	8.63	8.05	7.70							
	⌋⌋	3.5—18.88m 25t	25.00	23.40	18.00	14.40	11.90	10.70	10.00	9.14	8.61	7.89	7.47	6.89	6.53						
50m (R=52.63)	⌋	3.5—36.64m 12.5t	12.50				12.00	11.30	10.40	9.85	9.13	8.70									
	⌋⌋	3.5—19.00m 25t	25.00	23.50	18.10	14.50	12.00	10.80	10.10	9.22	8.69	7.97	7.53								
45m (R=47.63)	⌋	3.5—37.11m 12.5t	12.50				12.20	11.50	10.50	10.00											
	⌋⌋	3.5—19.24m 25t	25.00	23.90	18.40	14.80	12.20	11.00	10.30	9.38	8.83										
40m (R=42.63)	⌋	3.5—37.34m 12.5t	12.50				12.30	11.50													
	⌋⌋	3.5—19.36m 25t	25.00	24.10	18.50	14.90	12.30	11.10	10.40												
35m (R=37.63)	⌋	3.5—35.00m 12.5t	12.50																		
	⌋⌋	3.5—19.41m 25t	25.00	24.10	18.50	14.90	12.30														

Mechanisms

		Hoisting		QP2580A				
	Slewing	HVV145B1.130 HVV145B2.130			III	♭	12.5t	27 m/min
		0 ~ 0.7 r/min	3 × 145 N.m			♭♭	25t	13.5 m/min
	Trolleying	BP110A			IV	♭	6.25t	53 m/min
		0 ~ 100 m/min	11 kW			♭♭	12.5t	27 m/min
	Travelling	ZAK52-B ZBK52-B			V	♭	1t	80 m/min
		0 ~ 25 m/min	6 × 5.2 kW			♭♭	2t	40 m/min
		550m⊙ (5 layers)		⊙ Consult us If overtop				
		380V(+10% - 10%) 50Hz		96.5 + 6 × 5.2 kW				