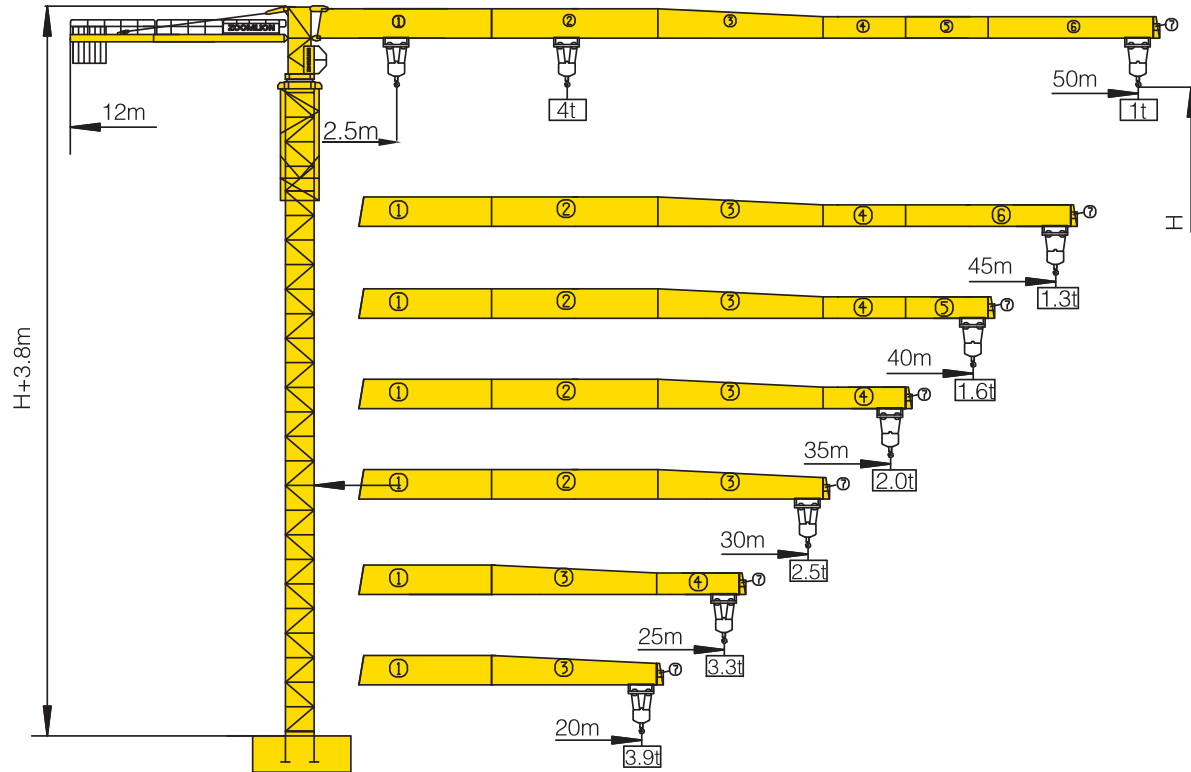


TCT5010-4



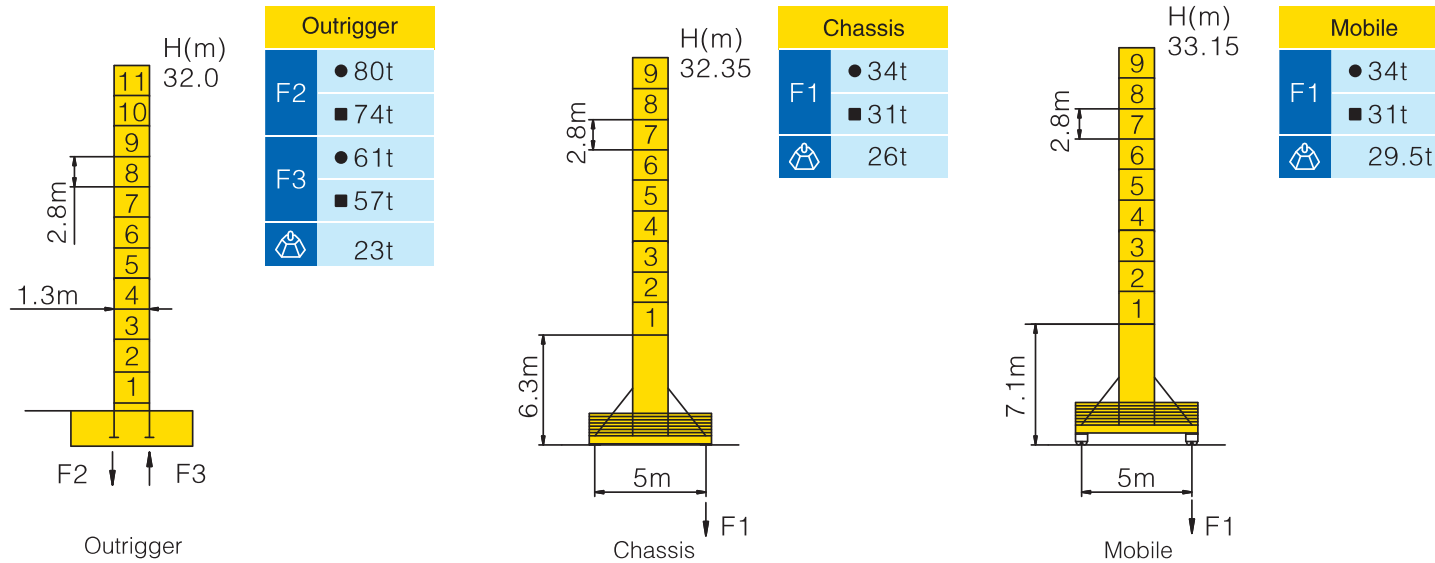
Counter-jib ballast

▲▲▲▲	▤▥▦	▧ (Kg)	PHZ2100	PHZ1700	PHZ1200
50m	12m	10000	2	2	2
45m	12m	8800	2	2	1
40m	12m	8300	2	1	2
35m	12m	7600	2	2	0
30m	12m	7100	2	1	1
25m	12m	5000	1	1	1
20m	12m	4200	2	0	0

Working Height(m) @ Wall-tie Location(m)

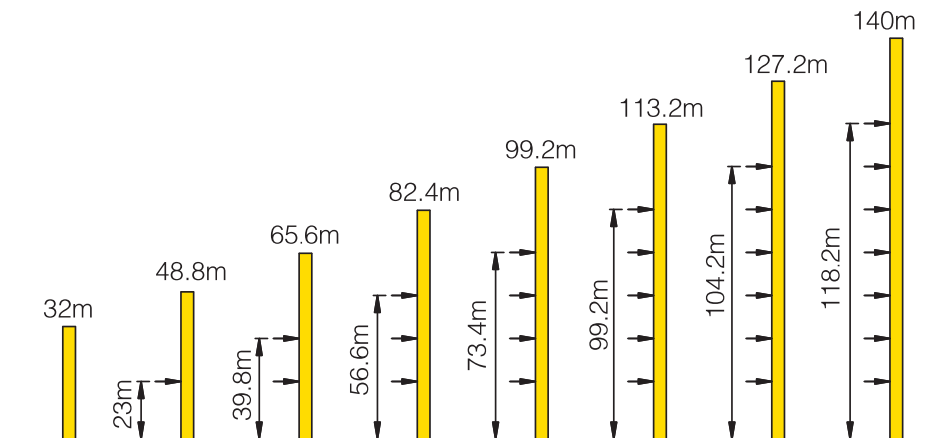
Model Detail	Mast Code	Wall-tie #1	Wall-tie #2	Wall-tie #3	Wall-tie #4	Wall-tie #5	Wall-tie #6	Wall-tie #7
TCT5010-4	L1	48.8 @ 23	65.6 @ 39.8	82.4 @ 56.6	99.2 @ 73.4	113.2 @ 90.2	127.2 @ 104.2	140 @ 118.2

Masts Reactions




● Reactions in service ■ Reactions out of service
 ⚠ Without load and ballast with longest jib and maximum height
 ⓘ For more erecting solutions, consult us!

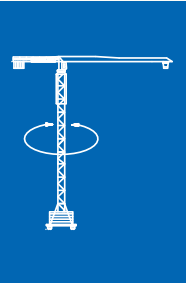
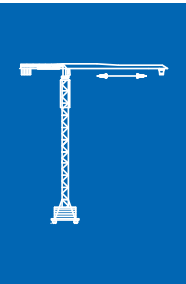
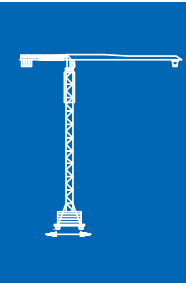
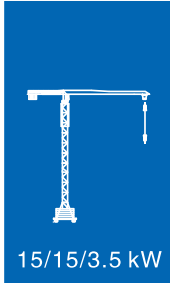
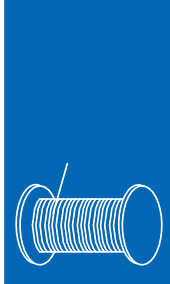

Anchorage



Load diagrams

		Max. Capacity m/t	15.0	17.5	20	22.5	25.0	27.5	30.0	32.5	35.0	37.5	40.0	42.5	45.0	47.5	50.0
50m (R=51)	б	2.5—29.65m 2t	2.00						1.99	1.80	1.63	1.50	1.37	1.26	1.16	1.08	1.00
	бб	2.5—16.65m 4t	4.00	3.78	3.23	2.80	2.47	2.19	1.97	1.78	1.61	1.48	1.35	1.24	1.14	1.06	0.98
45m (R=46)	б	2.5—32.25m 2t	2.00						1.98	1.81	1.65	1.52	1.40	1.30			
	бб	2.5—18.1m 4t	4.00	3.54	3.08	2.72	2.42	2.18	1.96	1.79	1.63	1.50	1.38	1.28			
40m (R=41)	б	2.5—33.6m 2t	2.00						1.90	1.74	1.60						
	бб	2.5—18.8m 4t	4.00	3.70	3.22	2.84	2.53	2.28	2.06	1.88	1.72	1.58					
35m (R=36)	б	2.5—34.3m 2t	2.00						1.95								
	бб	2.5—19.2m 4t	4.00	3.79	3.30	2.91	2.60	2.34	2.12	1.93							
30m (R=31)	б	2.5—30m 2t	2.00														
	бб	2.5—19.8m 4t	4.00	3.93	3.42	3.02	2.70	2.43									
25m (R=26)	б	2.5—20.0m 2t	2.00														
	бб	2.5—20.1m 4t	4.00		3.48	3.08											
20m (R=21)	б	2.5—20.0m 2t	2.00														
	бб	2.5—20m 4t	4.00														

Mechanisms

		Hoisting		QS470		
	Slewing		HR37.100			
	0 ~ 0.6 r/min	3.7 kW	III	♭	1.0t 70 m/min	
	Trolleying		BE24			
	40/20 m/min	2.4/1.5 kW	II	♭	2t 35 m/min	
	Travelling		ZA52A-D ZC52A-D			
	0 ~ 25 m/min	2×5.2 kW	I	♭	2t 7.5 m/min	
		 15/15/3.5 kW		III	♭♭	2t 35 m/min
		 280m⊕ (5 layers) ⊕ Consult us If overtop		II	♭♭	4t 17.5 m/min
				I	♭♭	4t 3.7 m/min
		380V(+10%–10%) 50Hz		21.1+2 × 5.2 kW		