



POWERLIFT 8000 · 拓力 8000

360t capacity · 360t 起重能力

Crawler Crane

履带起重机

DATASHEET METRIC

参数表 (公制)

POWERLIFT 8000

拓力 8000



WORKS FOR YOU.™

Key · 关键词汇	3
-------------------	---

Highlights · 技术亮点	4
--------------------------	---

Specifications · 技术参数	5
------------------------------	---

Specifications · 技术参数	5
-----------------------	---

Main boom configurations · 主臂的配置	7
----------------------------------	---

Boom combinations · 臂杆组合	9
--------------------------	---

Main boom · 主臂	10
-----------------------	----

Working ranges · 工作范围	10
-----------------------	----

Lifting capacities · 起重能力	11
---------------------------	----

Luffing fly jib · 变幅副臂	12
-------------------------------	----

Working ranges · 工作范围	12
-----------------------	----

Lifting capacities · 起重能力	13
---------------------------	----

Fixed jib · 固定副臂	19
-------------------------	----

Working ranges · 工作范围	19
-----------------------	----

Lifting capacities · 起重能力	20
---------------------------	----

Technical description · 技术描述	22
-------------------------------------	----

Transport example · 运输实例	24
---------------------------------	----



Track · 履带



Load radius · 载荷半径



Main boom · 主臂



Fixed jib · 固定副臂



Main boom angle · 主臂角度



Fixed jib angle · 固定副臂角度

„D“



H: Main boom · 主臂

W: Luffing fly jib · 变幅副臂

F: Fixed jib · 固定副臂

HIGHLIGHTS · 技术亮点

POWERLIFT 8000
拓力 8000

- ▶ 360 t lifting capacity at 5.2 m radius
- ▶ Excellent lifting capacities throughout the whole working range
- ▶ Easy assembly and short rigging time
- ▶ Telescopic crawler system allows easy adaptation to road width
- ▶ Imported EPEC crane control system equipped with touch screen display
- ▶ The self developed load sensing system for the hydraulic pumps, which receive feedback from the hydrostatic drive and the hydraulic system, allows most efficient operation and reduces the fuel consumption

- ▶ 5.2 m半径内的360吨履带起重机
- ▶ 任何工作范围都具有优异的起重性能
- ▶ 装配极为简化，缩短装配时间
- ▶ 转场无需拆装，可伸缩的履带能最大限度适应路面宽度
- ▶ 采用原装进口EPEC起重机控制系统配有彩色液晶显示屏
- ▶ 全液压传动，液压系统采用自主研发的极限负载调节系统调节变量泵，防止发动机憋车，同时节约了能耗，提高了效率。



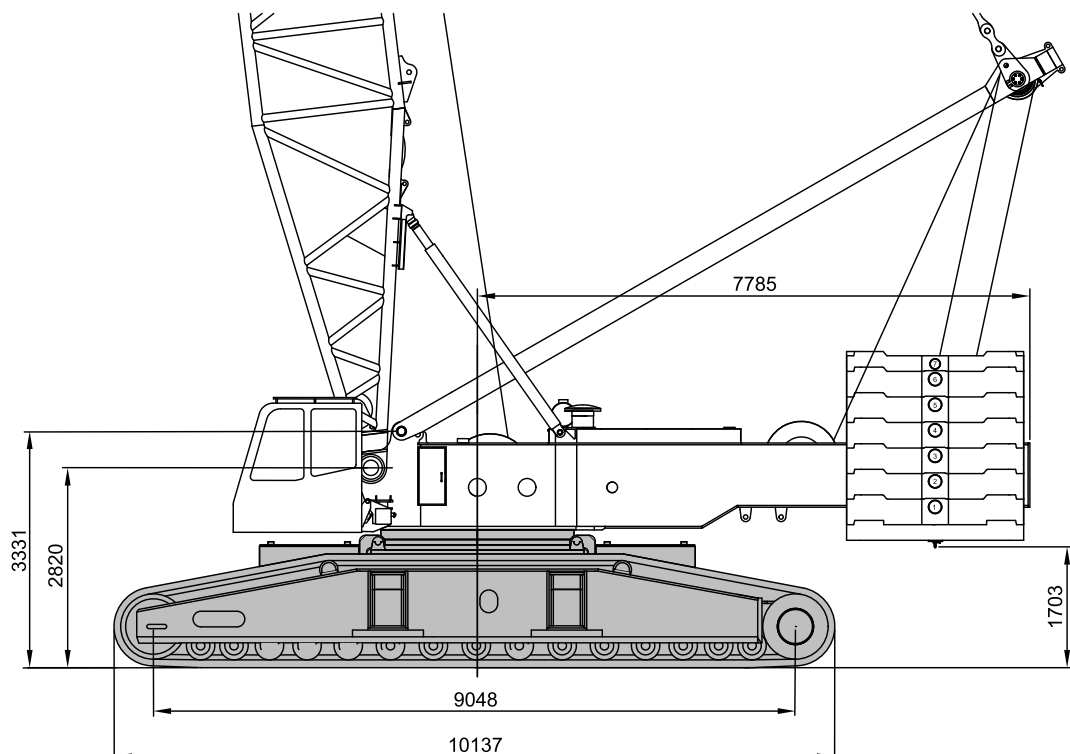
Working speeds · 工作速度

Mechanisms 机械部分	Rope \varnothing 钢绳 \varnothing	Speeds ¹⁾ 速度 ¹⁾	Single line pull ²⁾ 单绳拉力 ²⁾	Length of hoist rope 卷扬钢绳的长度
Hoist I (H1) 卷扬 I (H1)	26 mm	max. 120 m / min	159 kN / 147 kN	910 m
Hoist II (H2) 卷扬 II (H2)	26 mm	max. 120 m / min	159 kN / 147 kN	520 m
Boom derricking (W2) 主臂变幅 (W2)	26 mm	max. 51 m / min		
Slewing (rpm) 回转 (rpm)		0-1.5		

¹⁾ top layer · 顶层

²⁾ without / with reeving effect considered · 不考虑 / 考虑穿绳效率

Basic crane dimensions · 起重机基本尺寸



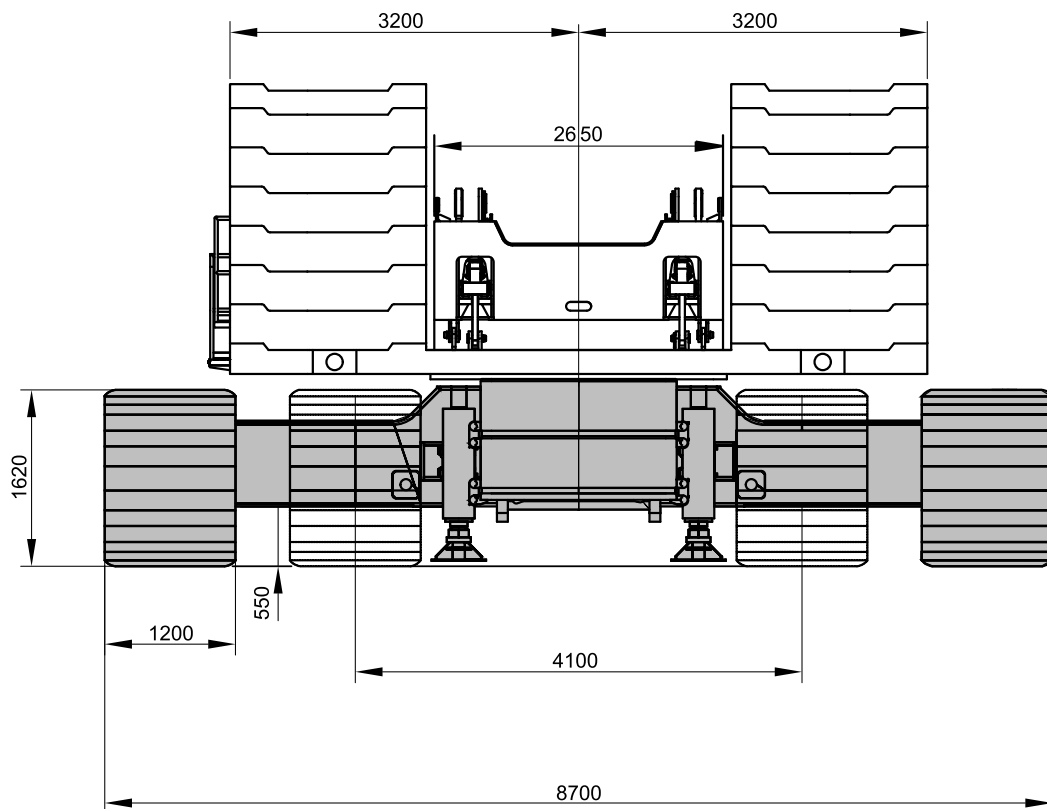
Carrier performance with standard drive · 带标准驱动的底盘性能

Travel speed on crawlers · 行走速度

0-0.9 km/h

Hook blocks · 吊钩

Type 类型	Possible load 可能的载荷	Number of sheaves 滑轮组数	Number of lines 绳数	Weight 重量	"D"
360	360 t	16	32	7.8 t	5.4 m
140	140 t	5	10	3.5 t	4.5 m
35	35 t	1	2	0.6 t	4.1 m
13.5	13.5 t	-	1	0.27 t	3.2 m



MAIN BOOM CONFIGURATIONS · 主臂的配置

POWERLIFT 8000
拓力 8000

Weights · 重量

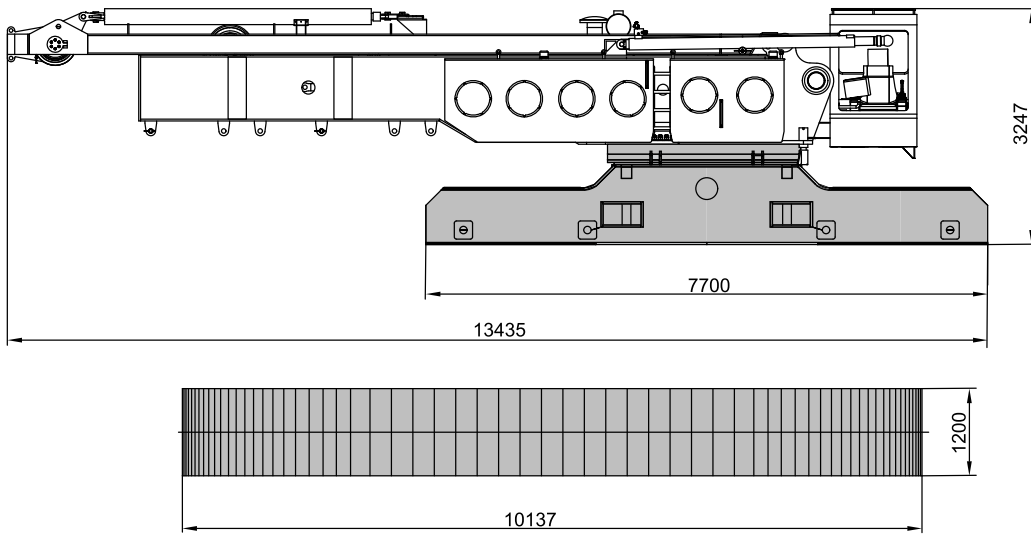
Total weight incl. counterweight 172 t, 24 m H boom and 360 t hook block 总重量包括172t吨的配重、24 m的H起重臂和360 t吊钩	340 t
Superstructure (with two drums, gantry and boom backstops) 上车 (带有二个卷扬、扳起架和主臂防后倾)	41 t
Superstructure (without drums H1/H2, gantry and boom backstops) 上车 (不带卷扬、扳起架和主臂防后倾)	28 t
Carbody / Carbody with lifting cylinder 车体 / 车体带有安装举升油缸	26 t
Crawlers with standard drive 履带带有标准驱动器	27.1 t*2 t
Counterweight 配重	172 t

Ground pressure · 接地比压

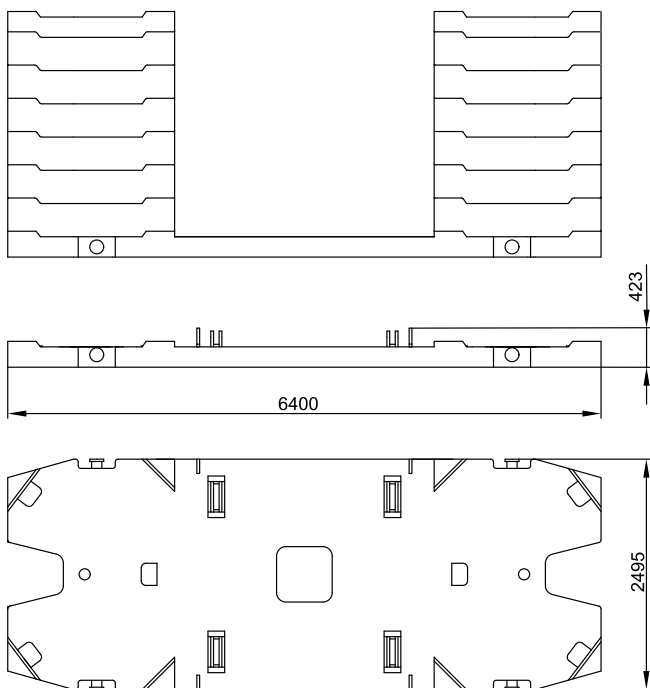
Ground pressure, based on 340 t total weight 基于 340 吨总重时的接地比压	14.5 N/cm ²
--	------------------------

MAIN BOOM CONFIGURATIONS · 主臂的配置

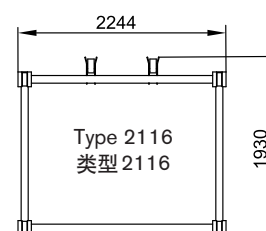
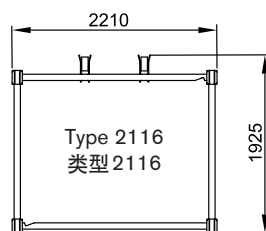
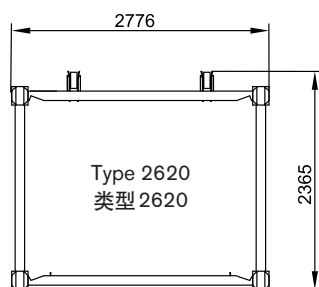
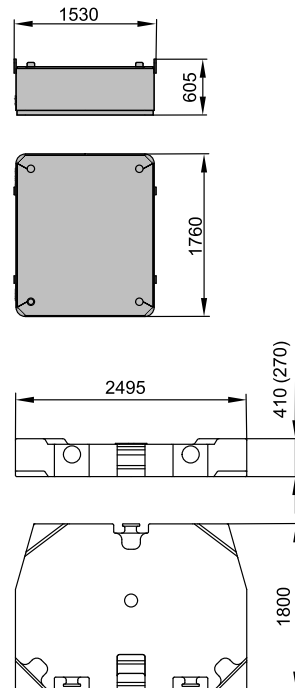
POWERLIFT 8000
拓力 8000



Counterweights on upper · 上车配重

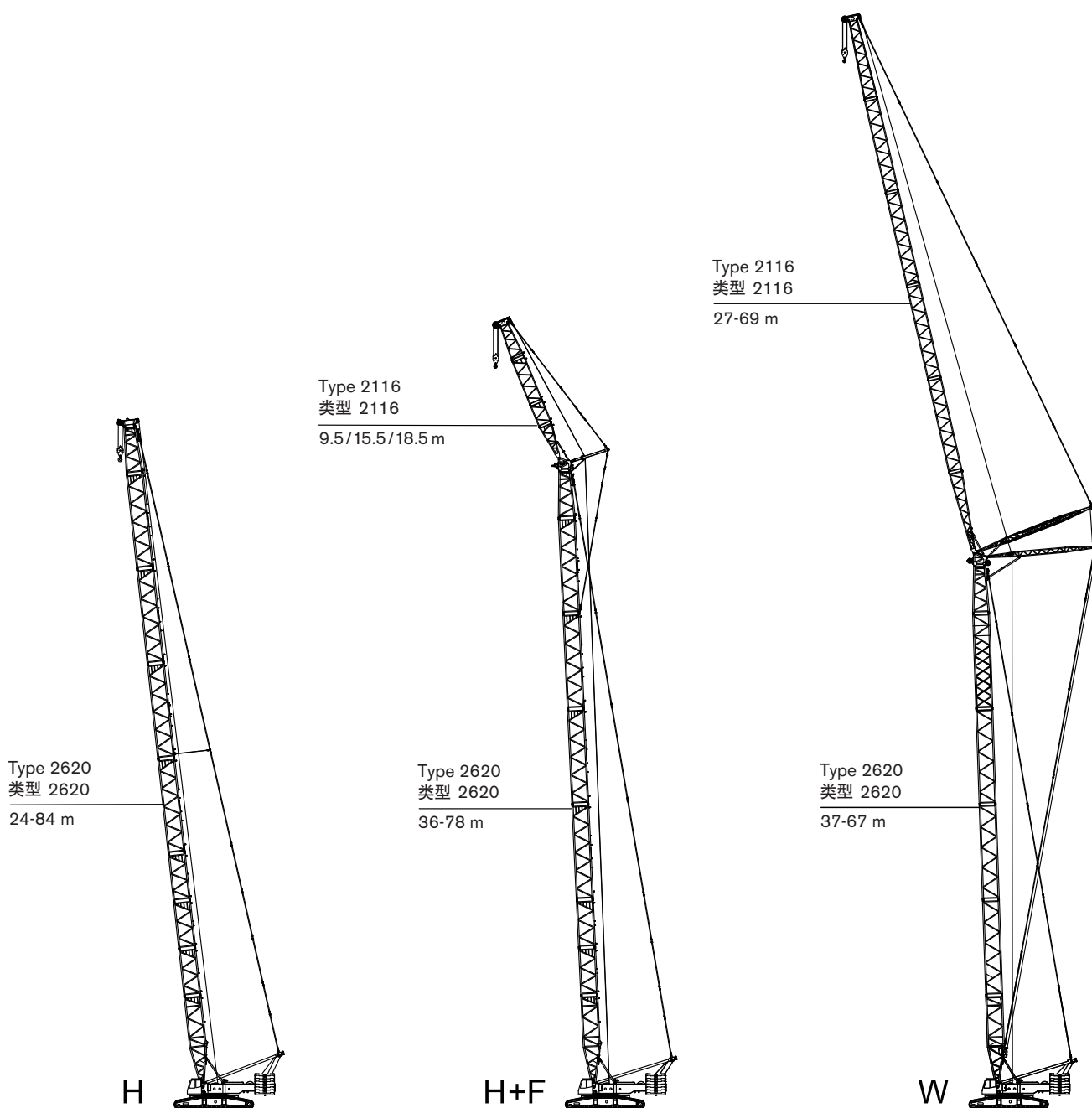


Central ballast · 车体中心配重



BOOM COMBINATIONS · 臂杆组合

POWERLIFT 8000
拓力 8000

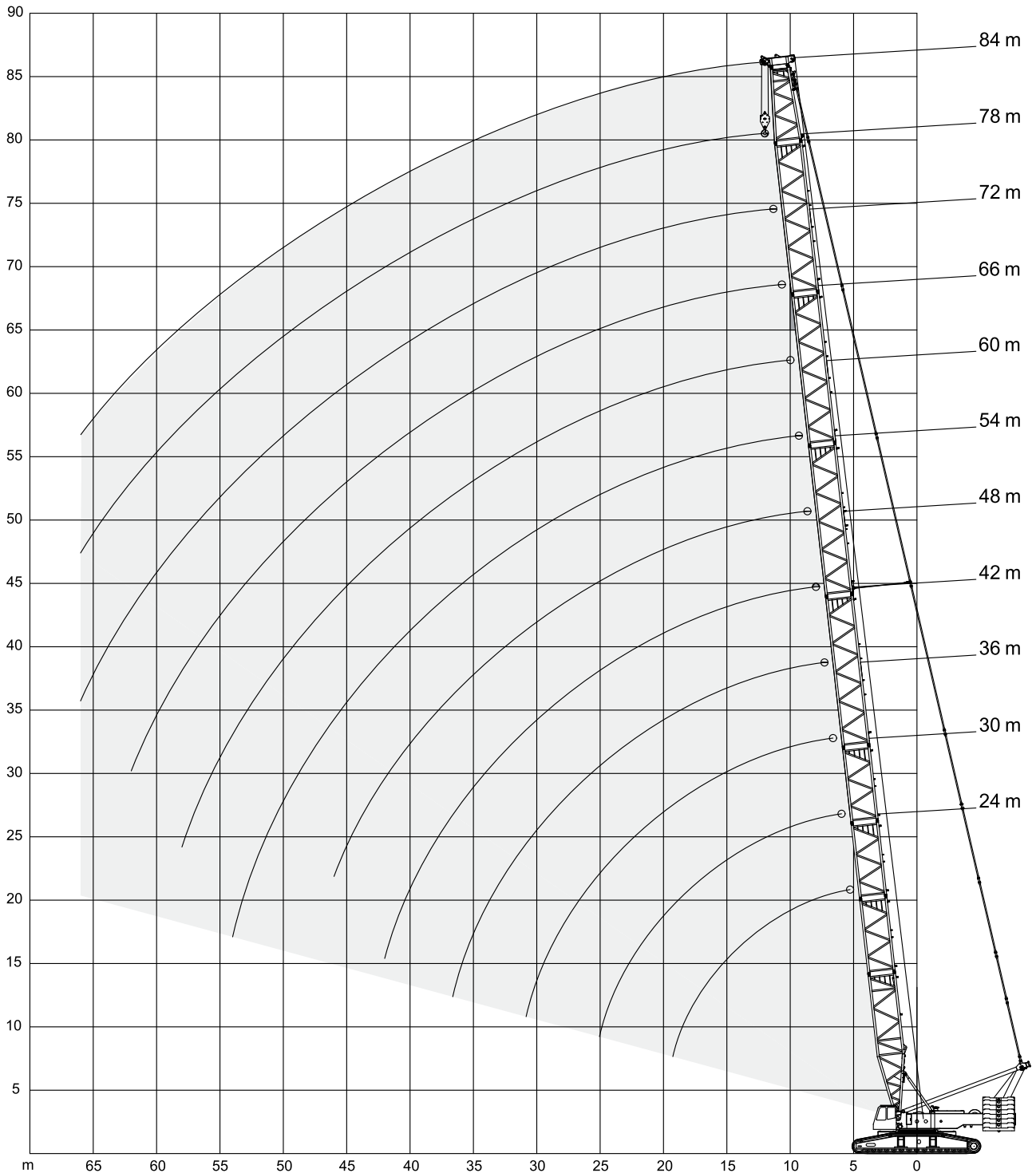


MAIN BOOM · 主臂

Working ranges · 工作范围

POWERLIFT 8000

拓力 8000



MAIN BOOM · 主臂

Lifting capacities · 起重能力

POWERLIFT 8000
拓力 8000

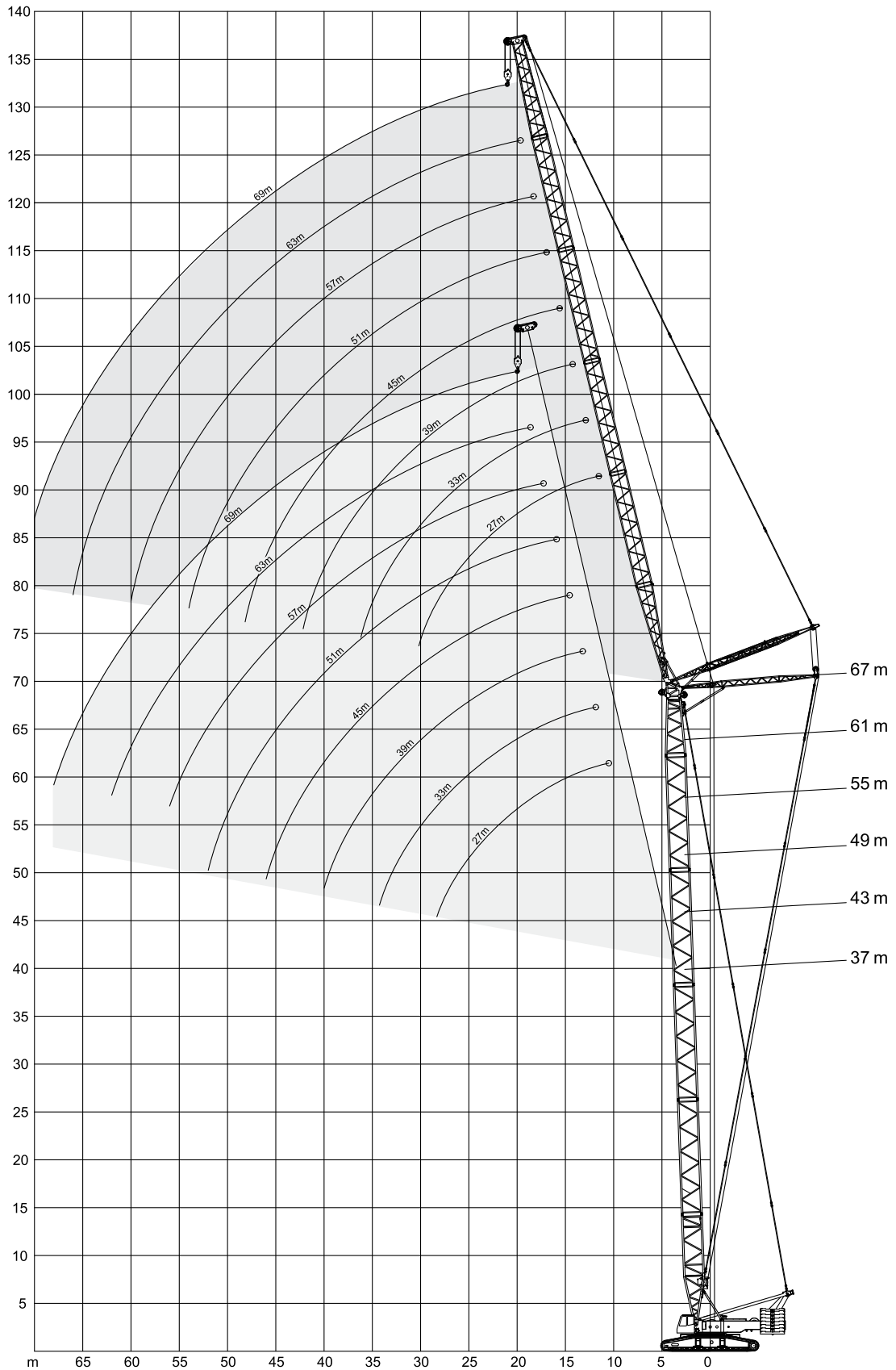
		132 t + 40 t central ballast · 132 t + 40 t 中心配重											7.5 m	360°	GB / ISO
		24 m	30 m	36 m	42 m	48 m	54 m	60 m	66 m	72 m	78 m	84 m			
m		t	t	t	t	t	t	t	t	t	t	t	m		
5.2		360.0	-	-	-	-	-	-	-	-	-	-	5.2		
6		314.0	-	-	-	-	-	-	-	-	-	-	6		
7		272.0	271.0	270.0	-	-	-	-	-	-	-	-	7		
8		240.0	238.0	236.0	235.0	-	-	-	-	-	-	-	8		
9		213.0	211.0	210.0	208.0	205.0	192.0	-	-	-	-	-	9		
10		190.0	188.0	186.0	184.0	181.0	181.0	170.0	155.0	-	-	-	10		
12		157.0	155.0	154.0	153.0	152.0	151.0	147.0	135.0	120.0	105.0	93.0	12		
14		125.0	123.5	122.5	121.5	121.0	121.0	120.0	119.5	106.0	94.0	82.0	14		
16		103.0	102.0	102.0	101.0	101.0	100.0	100.0	98.0	95.0	84.0	74.0	16		
18		88.0	87.5	86.0	86.0	85.0	85.0	84.0	84.0	82.0	75.5	66.0	18		
20		76.0	75.5	74.0	74.0	73.5	73.0	72.0	72.0	71.0	68.0	59.5	20		
22		66.5	66.0	65.5	65.0	64.0	64.0	63.0	63.0	62.0	61.0	53.5	22		
24		-	59.0	58.0	58.0	57.5	57.0	56.5	56.0	56.0	55.5	51.5	24		
26		-	53.0	52.0	51.5	51.0	50.5	50.0	50.0	50.0	49.5	48.5	26		
28		-	47.0	47.0	46.5	46.0	46.0	46.0	45.5	45.5	45.0	44.5	28		
30		-	-	43.0	43.0	42.5	42.0	41.5	41.0	40.5	41.0	39.0	30		
32		-	-	-	39.0	38.5	38.0	37.5	37.0	36.5	36.0	36.0	32		
34		-	-	-	36.0	35.5	34.5	34.0	33.0	32.5	31.5	31.0	34		
36		-	-	-	33.0	32.5	32.0	31.5	31.0	30.5	30.0	29.0	36		
38		-	-	-	30.0	29.5	29.0	28.5	28.0	27.5	26.5	26.0	38		
40		-	-	-	-	27.0	27.0	26.5	25.5	25.0	24.0	22.5	40		
42		-	-	-	-	25.0	24.5	23.5	23.0	22.5	22.0	20.5	42		
44		-	-	-	-	-	22.5	21.5	20.5	20.5	19.5	19.0	44		
46		-	-	-	-	-	20.5	20.0	19.5	18.5	17.5	17.0	46		
48		-	-	-	-	-	-	18.5	17.5	17.0	16.5	15.0	48		
50		-	-	-	-	-	-	17.5	16.5	15.5	14.5	13.5	50		
52		-	-	-	-	-	-	16.0	15.5	14.5	13.5	12.5	52		
54		-	-	-	-	-	-	15.0	14.5	13.0	12.0	11.0	54		
56		-	-	-	-	-	-	-	13.0	12.0	11.0	10.0	56		
58		-	-	-	-	-	-	-	12.0	11.0	10.0	9.0	58		
60		-	-	-	-	-	-	-	-	10.0	9.0	8.0	60		
62		-	-	-	-	-	-	-	-	9.0	8.0	7.5	62		
64		-	-	-	-	-	-	-	-	-	7.5	6.5	64		
66		-	-	-	-	-	-	-	-	-	7.0	6.0	66		
Number of lines · 倍率		32.0	26.0	23.0	19.0	17.0	15.0	13.0	12.0	10.0	9.0	8.0	Number of lines · 倍率		

LUFFING FLY JIB · 变幅副臂

Working ranges · 工作范围

POWERLIFT 8000






拓力 8000



LUFFING FLY JIB · 变幅副臂

Lifting capacities · 起重能力






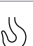
POWERLIFT 8000
拓力 8000

 132 t + 40 t central ballast · 132 t + 40 t 中心配重  37 m  7.5 m  360°  GB / ISO										
	27 m	33 m	39 m	45 m	51 m	57 m	63 m	69 m		
m	t	t	t	t	t	t	t	t	t	m
13	140.0	-	-	-	-	-	-	-	-	13
14	128.0	-	-	-	-	-	-	-	-	14
15	117.5	117.0	-	-	-	-	-	-	-	15
16	107.5	107.0	106.5	-	-	-	-	-	-	16
17	99.0	98.5	97.5	-	-	-	-	-	-	17
18	92.0	91.0	90.5	90.0	-	-	-	-	-	18
19	85.5	85.0	84.0	83.5	-	-	-	-	-	19
20	80.0	79.0	78.5	77.5	77.0	-	-	-	-	20
22	70.5	70.0	69.0	68.5	67.5	67.0	-	-	-	22
24	63.0	62.5	61.5	61.0	60.0	59.5	59.0	56.0	-	24
26	57.0	56.0	55.5	55.0	54.0	53.5	52.5	52.0	-	26
28	52.0	51.0	50.5	49.5	49.0	48.5	47.5	46.5	-	28
30	47.5	47.0	46.0	45.5	44.5	44.0	43.5	42.5	-	30
32	-	43.0	42.5	41.5	41.0	40.5	39.5	39.0	-	32
34	-	40.0	39.0	38.5	37.5	37.0	36.5	35.5	-	34
36	-	37.0	36.5	35.5	35.0	34.5	33.5	33.0	-	36
38	-	-	34.0	33.0	32.5	32.0	31.0	30.5	-	38
40	-	-	31.5	31.0	30.0	29.5	29.0	28.0	-	40
42	-	-	-	29.0	28.5	27.5	27.0	26.0	-	42
44	-	-	-	27.0	26.5	26.0	25.0	24.5	-	44
46	-	-	-	25.5	25.0	24.0	23.5	23.0	-	46
48	-	-	-	-	23.5	23.0	22.0	21.5	-	48
50	-	-	-	-	22.0	21.5	20.5	20.0	-	50
52	-	-	-	-	21.0	20.0	19.5	18.5	-	52
54	-	-	-	-	-	19.0	18.5	17.5	-	54
56	-	-	-	-	-	18.0	17.5	16.5	-	56
58	-	-	-	-	-	-	16.5	15.5	-	58
60	-	-	-	-	-	-	15.5	15.0	-	60
62	-	-	-	-	-	-	14.5	14.0	-	62
64	-	-	-	-	-	-	-	13.0	-	64
66	-	-	-	-	-	-	-	12.5	-	66
68	-	-	-	-	-	-	-	12.0	-	68
Number of lines · 倍率	12	10	9	8	7	6	6	5		Number of lines · 倍率

LUFFING FLY JIB · 变幅副臂

Lifting capacities · 起重能力

POWERLIFT 8000
拓力 8000

 132 t + 40 t central ballast · 132 t + 40 t 中心配重  43 m  7.5 m 360° GB / ISO										
		 27 m	33 m	39 m	45 m	51 m	57 m	63 m	69 m	
	m	t	t	t	t	t	t	t	t	m
14		125.0	-	-	-	-	-	-	-	14
15		117.0	-	-	-	-	-	-	-	15
16		107.0	106.5	-	-	-	-	-	-	16
17		98.5	98.0	97.0	-	-	-	-	-	17
18		91.0	90.5	89.5	-	-	-	-	-	18
19		85.0	84.0	83.5	82.5	-	-	-	-	19
20		79.0	78.5	78.0	77.0	-	-	-	-	20
22		70.0	69.5	68.5	68.0	67.0	66.5	-	-	22
24		62.5	62.0	61.0	60.5	59.5	59.0	58.5	-	24
26		56.5	56.0	55.0	54.5	53.5	53.0	52.0	49.5	26
28		51.5	50.5	50.0	49.5	48.5	48.0	47.0	46.5	28
30		47.0	46.5	46.0	45.0	44.5	43.5	43.0	42.0	30
32		-	42.5	42.0	41.5	40.5	40.0	39.0	38.5	32
34		-	39.5	39.0	38.0	37.5	36.5	36.0	35.5	34
36		-	36.5	36.0	35.5	34.5	34.0	33.0	32.5	36
38		-	-	33.5	33.0	32.0	31.5	31.0	30.0	38
40		-	-	31.5	30.5	30.0	29.5	28.5	28.0	40
42		-	-	29.5	28.5	28.0	27.5	26.5	26.0	42
44		-	-	-	27.0	26.0	25.5	25.0	24.0	44
46		-	-	-	25.5	24.5	24.0	23.0	22.5	46
48		-	-	-	24.0	23.0	22.5	22.0	21.0	48
50		-	-	-	-	22.0	21.0	20.5	20.0	50
52		-	-	-	-	20.5	20.0	19.0	18.5	52
54		-	-	-	-	-	19.0	18.0	17.5	54
56		-	-	-	-	-	18.0	17.0	16.5	56
58		-	-	-	-	-	17.0	16.0	15.5	58
60		-	-	-	-	-	-	15.0	14.5	60
62		-	-	-	-	-	-	14.5	14.0	62
64		-	-	-	-	-	-	13.5	13.0	64
66		-	-	-	-	-	-	-	12.5	66
68		-	-	-	-	-	-	-	11.5	68
Number of lines · 倍率		11	9	9	7	6	6	5	5	Number of lines · 倍率

LUFFING FLY JIB · 变幅副臂

Lifting capacities · 起重能力

POWERLIFT 8000
拓力 8000

132 t + 40 t central ballast · 132 t + 40 t 中心配重 49 m 7.5 m 360° GB / ISO										
	27 m	33 m	39 m	45 m	51 m	57 m	63 m	69 m		
m	t	t	t	t	t	t	t	t	t	m
15	116.0	-	-	-	-	-	-	-	-	15
16	106.0	105.5	-	-	-	-	-	-	-	16
17	97.5	97.0	-	-	-	-	-	-	-	17
18	90.5	90.0	89.0	-	-	-	-	-	-	18
19	84.0	83.5	82.5	-	-	-	-	-	-	19
20	78.5	78.0	77.0	76.5	-	-	-	-	-	20
22	69.5	69.0	68.0	67.5	66.5	-	-	-	-	22
24	62.0	61.5	60.5	60.0	59.0	58.5	57.5	-	-	24
26	56.0	55.5	54.5	54.0	53.0	52.5	51.5	50.0	-	26
28	51.0	50.5	49.5	49.0	48.0	47.5	46.5	46.0	-	28
30	46.5	46.0	45.5	44.5	44.0	43.0	42.5	41.5	-	30
32	43.0	42.5	41.5	41.0	40.0	39.5	39.0	38.0	-	32
34	-	39.0	38.5	38.0	37.0	36.5	35.5	35.0	-	34
36	-	36.5	35.5	35.0	34.5	33.5	33.0	32.0	-	36
38	-	-	33.0	32.5	32.0	31.0	30.5	29.5	-	38
40	-	-	31.0	30.5	29.5	29.0	28.0	27.5	-	40
42	-	-	29.0	28.5	27.5	27.0	26.5	25.5	-	42
44	-	-	-	26.5	26.0	25.5	24.5	24.0	-	44
46	-	-	-	25.0	24.5	23.5	23.0	22.5	-	46
48	-	-	-	23.5	23.0	22.0	21.5	21.0	-	48
50	-	-	-	-	21.5	21.0	20.0	19.5	-	50
52	-	-	-	-	20.5	19.5	19.0	18.5	-	52
54	-	-	-	-	19.0	18.5	18.0	17.0	-	54
56	-	-	-	-	-	17.5	17.0	16.0	-	56
58	-	-	-	-	-	16.5	16.0	15.5	-	58
60	-	-	-	-	-	-	15.0	14.5	-	60
62	-	-	-	-	-	-	14.0	13.5	-	62
64	-	-	-	-	-	-	13.5	13.0	-	64
66	-	-	-	-	-	-	-	12.0	-	66
68	-	-	-	-	-	-	-	11.5	-	68
70	-	-	-	-	-	-	-	11.0	-	70
Number of lines · 倍率	10	9	8	7	6	5	5	5	Number of lines · 倍率	

LUFFING FLY JIB · 变幅副臂

Lifting capacities · 起重能力

POWERLIFT 8000
拓力 8000

132 t + 40 t central ballast · 132 t + 40 t 中心配重										
55 m										
7.5 m										
360°										
GB / ISO										
	27 m	33 m	39 m	45 m	51 m	57 m	63 m	69 m		
m	t	t	t	t	t	t	t	t	t	m
15	115.0	-	-	-	-	-	-	-	-	15
16	105.5	-	-	-	-	-	-	-	-	16
17	97.0	96.0	-	-	-	-	-	-	-	17
18	89.5	89.0	88.0	-	-	-	-	-	-	18
19	83.5	83.0	82.0	-	-	-	-	-	-	19
20	78.0	77.5	76.5	76.0	-	-	-	-	-	20
22	69.0	68.0	67.5	66.5	66.0	-	-	-	-	22
24	61.5	61.0	60.0	59.5	58.5	58.0	-	-	-	24
26	55.5	55.0	54.0	53.5	52.5	52.0	51.0	50.0	-	26
28	50.5	50.0	49.0	48.5	47.5	47.0	46.0	45.5	-	28
30	46.0	45.5	45.0	44.0	43.5	42.5	42.0	41.0	-	30
32	42.5	42.0	41.0	40.5	40.0	39.0	38.5	37.5	-	32
34	-	39.0	38.0	37.5	36.5	36.0	35.0	34.5	-	34
36	-	36.0	35.5	34.5	34.0	33.0	32.5	32.0	-	36
38	-	33.5	33.0	32.0	31.5	31.0	30.0	29.5	-	38
40	-	-	30.5	30.0	29.5	28.5	28.0	27.0	-	40
42	-	-	28.5	28.0	27.5	26.5	26.0	25.5	-	42
44	-	-	-	26.5	25.5	25.0	24.0	23.5	-	44
46	-	-	-	25.0	24.0	23.5	22.5	22.0	-	46
48	-	-	-	23.5	22.5	22.0	21.0	20.5	-	48
50	-	-	-	-	21.5	20.5	20.0	19.5	-	50
52	-	-	-	-	20.0	19.5	18.5	18.0	-	52
54	-	-	-	-	19.0	18.5	17.5	17.0	-	54
56	-	-	-	-	-	17.5	16.5	16.0	-	56
58	-	-	-	-	-	16.5	15.5	15.0	-	58
60	-	-	-	-	-	15.5	15.0	14.0	-	60
62	-	-	-	-	-	-	14.0	13.5	-	62
64	-	-	-	-	-	-	13.0	12.5	-	64
66	-	-	-	-	-	-	-	12.0	-	66
68	-	-	-	-	-	-	-	11.0	-	68
70	-	-	-	-	-	-	-	10.5	-	70
Number of lines · 倍率	10	8	8	7	6	5	5	5	5	Number of lines · 倍率

LUFFING FLY JIB · 变幅副臂

Lifting capacities · 起重能力

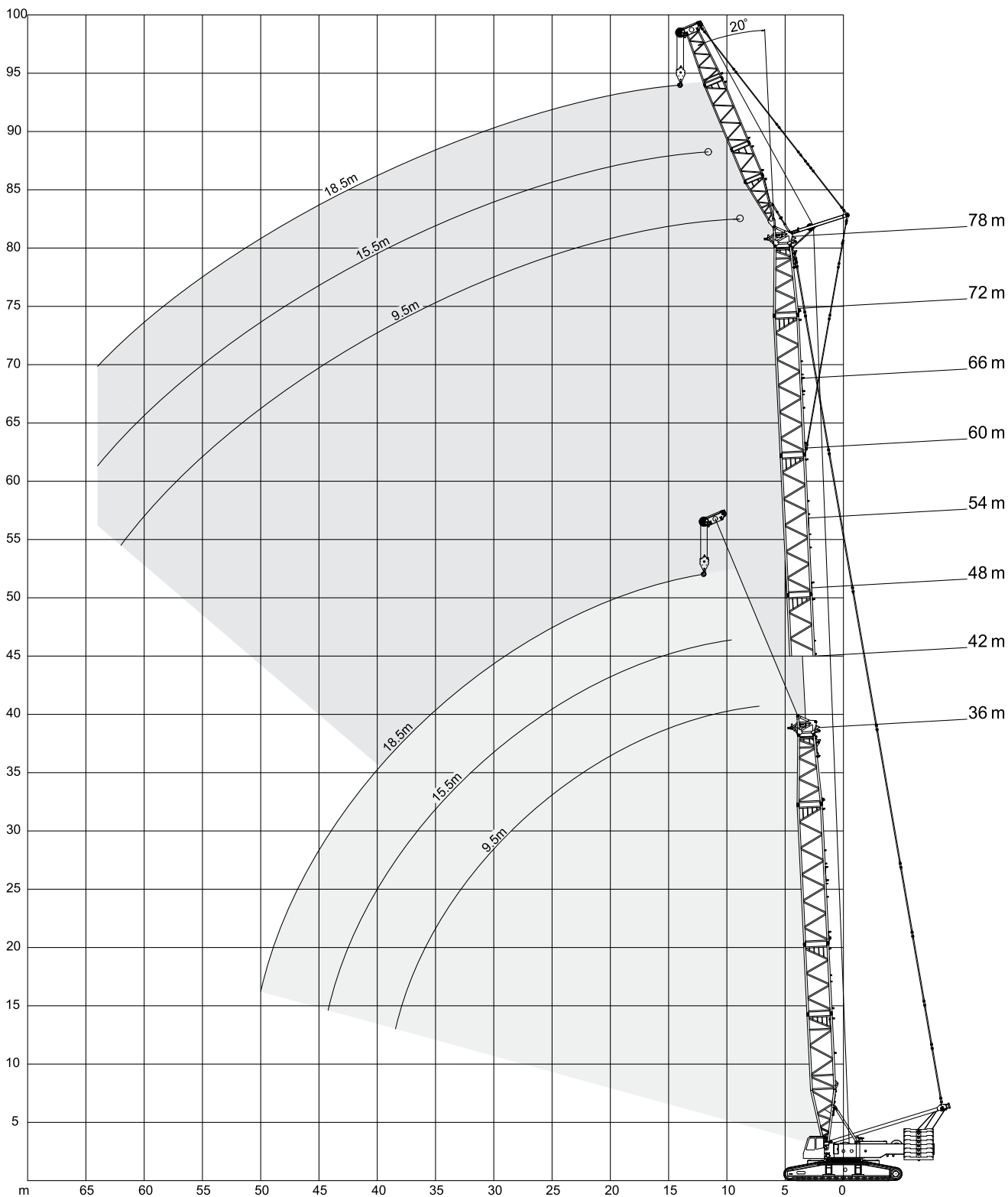
POWERLIFT 8000
拓力 8000

132 t + 40 t central ballast · 132 t + 40 t 中心配重 67 m 7.5 m 360° GB / ISO										
m	t	t	t	t	t	t	t	t	t	m
16	103.5	-	-	-	-	-	-	-	-	16
17	95.0	-	-	-	-	-	-	-	-	17
18	88.0	87.5	-	-	-	-	-	-	-	18
19	82.0	81.0	-	-	-	-	-	-	-	19
20	76.5	76.0	75.0	-	-	-	-	-	-	20
22	67.5	67.0	66.0	65.0	-	-	-	-	-	22
24	60.5	59.5	59.0	58.0	57.0	56.5	-	-	-	24
26	54.5	53.5	53.0	52.0	51.5	50.5	50.0	-	-	26
28	49.5	49.0	48.0	47.5	46.5	46.0	45.0	44.0	-	28
30	45.5	44.5	44.0	43.0	42.5	41.5	41.0	40.0	-	30
32	41.5	41.0	40.5	39.5	39.0	38.0	37.5	36.5	-	32
34	-	38.0	37.0	36.5	35.5	35.0	34.5	33.5	-	34
36	-	35.0	34.5	34.0	33.0	32.5	31.5	31.0	-	36
38	-	33.0	32.0	31.5	30.5	30.0	29.0	28.5	-	38
40	-	-	30.0	29.5	28.5	28.0	27.0	26.5	-	40
42	-	-	28.0	27.5	26.5	26.0	25.0	24.5	-	42
44	-	-	26.5	25.5	25.0	24.5	23.5	23.0	-	44
46	-	-	-	24.0	23.5	22.5	22.0	21.5	-	46
48	-	-	-	22.5	22.0	21.5	20.5	20.0	-	48
50	-	-	-	21.5	20.5	20.0	19.5	18.5	-	50
52	-	-	-	-	19.5	19.0	18.0	17.5	-	52
54	-	-	-	-	18.5	18.0	17.0	16.5	-	54
56	-	-	-	-	-	17.0	16.0	15.5	-	56
58	-	-	-	-	-	16.0	15.0	14.5	-	58
60	-	-	-	-	-	15.0	14.5	13.5	-	60
62	-	-	-	-	-	-	13.5	13.0	-	62
64	-	-	-	-	-	-	12.5	12.0	-	64
66	-	-	-	-	-	-	12.0	11.5	-	66
68	-	-	-	-	-	-	-	10.5	-	68
70	-	-	-	-	-	-	-	10.0	-	70
Number of lines · 倍率	9	8	7	6	5	5	5	4	Number of lines · 倍率	

FIXED JIB · 固定副臂

Working ranges · 工作范围

POWERLIFT 8000
拓力 8000



FIXED JIB · 固定副臂

Lifting capacities · 起重能力

POWERLIFT 8000
拓力 8000

		132 t + 40 t central ballast · 132 t + 40 t 中心配重						7.5 m			360°			GB / ISO	
		36 m +			42 m +			48 m +			54 m +				
		9.5 m	15.5 m	18.5 m	9.5 m	15.5 m	18.5 m	9.5 m	15.5 m	18.5 m	9.5 m	15.5 m	18.5 m		
m	t	t	t	t	t	t	t	t	t	t	t	t	t	m	
9	120.0	-	-	120.0	-	-	120.0	-	-	-	-	-	-	9	
10	120.0	-	-	120.0	-	-	120.0	-	-	120.0	-	-	-	10	
11	120.0	115.0	-	120.0	110.0	-	120.0	-	-	120.0	-	-	-	11	
12	120.0	108.0	94.0	120.0	107.0	-	115.0	106.0	-	112.0	105.0	-	-	12	
13	120.0	103.0	90.0	115.0	102.0	89.5	110.0	101.0	89.0	108.0	100.0	88.5	-	13	
14	112.0	99.5	86.0	110.0	99.0	85.5	108.0	98.5	85.0	106.0	98.0	84.5	-	14	
15	105.0	97.0	82.5	102.5	96.5	82.0	100.0	96.0	81.5	99.5	95.5	81.0	-	15	
16	100.0	94.0	79.0	99.5	93.5	78.5	98.5	93.0	78.0	97.5	92.5	77.5	-	16	
17	93.5	90.0	76.0	93.5	89.5	75.5	93.0	89.0	75.0	92.5	88.5	74.5	-	17	
18	86.0	87.0	73.0	85.5	86.5	72.5	85.5	86.0	72.0	85.0	85.5	71.5	-	18	
19	79.5	81.0	71.5	79.0	80.5	71.0	79.0	80.0	70.5	78.5	79.5	70.0	-	19	
20	74.0	75.5	70.5	73.5	75.0	70.0	73.0	74.5	69.5	72.5	74.5	69.0	-	20	
22	64.5	66.0	66.0	64.0	65.5	65.5	63.5	65.0	65.0	63.0	64.5	64.5	-	22	
24	56.5	58.0	58.5	56.0	57.5	58.0	55.5	57.0	57.5	55.0	56.5	57.0	-	24	
26	50.0	51.5	52.0	49.5	51.0	51.5	49.0	50.5	51.0	48.5	50.0	50.5	-	26	
28	45.0	46.0	46.5	44.5	45.5	46.0	44.0	45.0	45.5	43.5	44.5	45.0	-	28	
30	40.5	41.5	42.0	40.0	41.0	41.5	39.5	40.5	41.0	39.0	40.0	40.5	-	30	
32	36.5	37.5	38.0	36.0	37.0	37.5	35.5	36.5	37.0	35.0	36.0	36.5	-	32	
34	33.0	34.0	34.5	32.5	33.5	34.0	32.0	33.0	33.5	31.5	32.5	33.0	-	34	
36	30.0	31.0	31.5	29.5	30.5	31.0	29.0	30.0	30.5	28.5	29.5	30.0	-	36	
38	27.5	28.5	29.0	27.0	28.0	28.5	26.5	27.5	28.0	26.0	27.0	27.5	-	38	
40	25.0	26.0	26.5	24.5	25.5	26.0	24.0	25.0	25.5	23.5	24.5	25.0	-	40	
42	-	24.0	24.5	22.5	23.5	24.0	22.0	23.0	23.5	21.5	22.5	23.0	-	42	
44	-	22.0	22.5	20.5	21.5	22.0	20.0	21.0	21.5	19.5	20.5	21.0	-	44	
46	-	20.5	20.5	-	20.0	20.0	18.5	19.5	19.5	18.0	19.0	19.0	-	46	
48	-	-	19.0	-	18.0	18.5	-	17.5	18.0	16.5	17.0	17.5	-	48	
50	-	-	17.5	-	16.5	17.0	-	16.0	16.5	15.0	15.5	16.0	-	50	
52	-	-	-	-	-	16.0	-	15.0	15.5	14.0	14.5	15.0	-	52	
54	-	-	-	-	-	14.5	-	-	14.0	12.5	13.0	13.5	-	54	
56	-	-	-	-	-	-	-	-	-	-	12.0	12.5	-	56	
58	-	-	-	-	-	-	-	-	-	-	11.0	11.5	-	58	
60	-	-	-	-	-	-	-	-	-	-	-	10.5	-	60	
Number of lines · 倍率	10	10	8	10	9	8	10	9	8	10	9	8	Number of lines · 倍率		

FIXED JIB · 固定副臂

Lifting capacities · 起重能力

POWERLIFT 8000
拓力 8000

132 t + 40 t central ballast · 132 t + 40 t 中心配重													7.5 m	360°	GB / ISO
m	60 m +			66 m +			72 m +			78 m +			m		
	9.5m	15.5m	18.5m	9.5m	15.5m	18.5m	9.5m	15.5m	18.5m	9.5m	15.5m	18.5m			
t	t	t	t	t	t	t	t	t	t	t	t	t			
10	120.0	-	-	115.0	-	-	-	-	-	-	-	-	10		
11	115.0	-	-	112.0	-	-	110.0	-	-	100.0	-	-	11		
12	109.0	100.0	-	107.0	-	-	105.0	-	-	94.5	-	-	12		
13	106.0	99.0	88.0	104.0	95.0	-	102.0	90.0	-	92.5	80.0	-	13		
14	104.0	97.5	84.0	102.0	93.0	83.5	100.0	88.5	80.0	90.5	78.0	71.0	14		
15	99.0	95.0	80.5	98.5	91.0	80.0	98.0	87.5	78.5	88.5	76.0	70.5	15		
16	96.5	92.0	77.0	95.5	89.0	76.5	94.5	85.0	76.0	85.5	74.0	69.0	16		
17	92.0	88.0	74.0	91.5	87.0	73.5	91.0	82.5	73.0	82.5	72.0	68.0	17		
18	84.5	85.0	71.0	84.0	84.0	70.5	83.5	80.5	70.0	80.0	70.0	66.0	18		
19	78.0	79.0	69.5	77.5	78.5	69.0	77.0	77.0	68.5	75.5	68.0	64.5	19		
20	72.0	74.0	68.5	71.5	73.5	68.0	71.0	73.0	67.5	70.5	66.0	62.5	20		
22	62.5	64.0	64.0	62.0	63.5	63.5	61.5	63.0	63.0	61.0	62.0	59.5	22		
24	54.5	56.0	56.5	54.0	55.5	56.0	53.5	55.0	55.5	53.0	54.5	55.0	24		
26	48.0	49.5	50.0	47.5	49.0	49.5	47.0	48.5	49.0	46.5	48.0	48.5	26		
28	43.0	44.0	44.5	42.5	43.5	44.0	42.0	43.0	43.5	41.0	42.5	43.0	28		
30	38.5	39.5	40.0	38.0	39.0	39.5	37.5	38.5	39.0	36.5	38.0	38.5	30		
32	34.5	35.5	36.0	34.0	35.0	35.5	33.5	34.5	35.0	33.0	34.0	34.5	32		
34	31.0	32.0	32.5	30.5	31.5	32.0	30.0	31.0	31.5	29.5	30.5	31.0	34		
36	28.0	29.0	29.5	27.5	28.5	29.0	27.0	28.0	28.5	26.5	27.5	28.0	36		
38	25.5	26.5	27.0	25.0	26.0	26.5	24.5	25.5	26.0	24.0	25.0	25.0	38		
40	23.0	24.0	24.5	22.5	23.5	24.0	22.0	23.0	23.5	21.5	22.5	23.0	40		
42	21.0	22.0	22.5	20.5	21.5	22.0	20.0	21.0	21.5	19.5	20.5	20.5	42		
44	19.0	20.0	20.5	18.5	19.5	20.0	18.0	19.0	19.5	17.5	18.5	18.5	44		
46	17.5	18.5	18.5	17.0	18.0	18.0	16.5	17.5	17.5	16.0	16.5	17.0	46		
48	16.0	16.5	17.0	15.5	16.0	16.5	15.0	15.5	16.0	14.5	15.0	15.5	48		
50	14.5	15.0	15.5	14.0	14.5	15.0	13.5	14.0	14.5	13.0	13.5	14.0	50		
52	13.5	14.0	14.5	13.0	13.5	13.5	12.5	13.0	13.0	11.5	12.5	12.5	52		
54	12.0	12.5	13.0	11.5	12.0	12.5	11.0	11.5	12.0	10.5	11.0	11.5	54		
56	11.0	11.5	12.0	10.5	11.0	11.5	10.0	10.5	11.0	9.5	10.0	10.0	56		
58	-	10.5	11.0	9.5	10.0	10.5	9.2	9.7	9.9	8.5	9.1	9.3	58		
60	-	9.5	10.0	9.1	9.6	9.8	8.2	8.7	8.9	7.5	8.1	8.3	60		
62	-	9.2	9.4	8.2	8.7	8.9	7.3	7.8	8.0	6.6	7.2	7.4	62		
64	-	-	8.5	7.4	7.9	8.0	6.5	7.0	7.2	-	6.3	6.5	64		
66	-	-	-	6.6	7.0	7.2	-	6.2	6.4	-	-	-	66		
68	-	-	-	-	6.3	6.5	-	-	-	-	-	-	68		
Number of lines · 倍率	10	9	8	10	8	7	9	7	7	8	7	6	Number of lines · 倍率		

Crawler Carrier

	3-section carrier comprising of carbody and two crawlers. Hydraulic cylinder connections crawlers and carbody to provide for easy assembly and removal to minimise width for transportation.
Carbody	Bending- and torsion-resistant welded structure of box type construction, fabricated of structural steel.
Crawlers	Side frames: bending-resistant welded structure of structural steel. Track pads, idler and drive wheels are fabricated of heat treated high-strength cast steel. 15 rollers on each side frame with hardened rolling surfaces.
Drive	Use of directional mechanism to increase gradeability with boom mounted. O&K gearbox imported from Germany, built-in brake release valve and overflow valve, which will automatically switch brake according to various main oil pressure, simplifying operation procedure. Hydraulic motor at each side operates drive wheel by planetary reducer to drive crawlers. Travelling speed: 0.9 km/h (the speed shall be subjected to various load). Max. gradeability: 30 %.

Superstructure

Counterweight	14 casted counterweights installed on upper, including 12 standard counterweight plates 10 t and two plates 6 t. Counterweight plate is welded structure and central ballast 40 t.
Frame	Torsion-resistant welded structure fabricated of structural steel.
Drive	DaimlerChrysler diesel engine type OM 501 LA, 290 kW (349 hp) at 2000 rpm. The engine complies with Euro III regulation.
Rope drums	The standard superstructure equipment includes two rope drums – hoist 1, and boom hoist. Hoist 2 installs on boom foot. The drums are powered by hydraulic motors through planetary gear reducer, internal-mounted normal-closed wet disc brake. LEBUS drum is adopted to ensure reeving in multiple layers. Luffing drum is designed with ratchet locking device.
Slew unit	Independent closed circuit transmission makes operation stable. Pinion of slewing reducer internally engaged with slewing bearing, and the pinion is driven with slewing motor by planetary gear reducer, normal-closed disc brake with buffer braking oil circuit shall enable more stable slewing brake. The designed slewing inertia valve may function accurate slewing, which may realize the function of alignment loads center of gravity. Slew speed infinitely variable 0-1.5 rpm.
Control system	The crane adopts CAN BUS transmission system to transfer digital signal, more stable and reliable. With EPEC main and assistant controller, Gessmann electronic control joystick from Germany and guard switch to prevent misoperation. All the working speeds are variable controlled by the lever position. Imported HBC remote controller to dismantle more safe and convenient. Adjustable brightness of Palfin colorful LCD display. The display may indicate load moment information, engine parameter, and hydraulic system information and performance data; in the event of abnormal, the display shall show the corresponding fault alarm code for inquiry. The system preset interface of GPS/GSM remote diagnose, which shall be available according to customers' demand. With such function, the operating position and the conditions of engine, hydraulic system and moment limit as well as the remote diagnose result shall be informed at any time.
Cabin	The cabin is fully closed with large windscreen and designed with front light, rear view mirror, air conditioner, heater, stereo and adjusted seat. The colorful touched display and monitor make operation more convenient.
Electrical equipment	24 V D.C. system (2 × batteries 12 V, 195 Ah).

Boom configurations

H:	Main boom: foot section 11.9 m Inserts: 6 m and 12 m Main boom lengths: 24-84 m
H + F:	Main boom: same as H. Main boom lengths: 36-78 m Fly jib lengths: 9.5 m, 15.5 m, 18.5 m
W:	Main boom: same as H. Main boom lengths: 37-67 m Fly jib lengths: 27-69 m
Operator aids	Electronic load moment indicator, independent colorful monitor, load moment limiter, angle and height limit switch as well as anemometer and gradienter.

底盘

底盘	底盘由三部分组成，车体和两个履带。车体和履带间由液压油缸连接，以减少运输宽度。
车身	箱型结构抗弯、抗扭，由结构钢焊接制造。
履带	履带架：由抗弯结构钢焊接制成。履带板、从动轮和驱动轮均由高强度热处理铸钢制造。在每边有 15 个经表面硬化处理过的支重轮。
行走机构	特别设计的行走机构，使带臂架爬坡能力更强。德国 O.K. 减速机马达，结构紧凑，配有制动器释放阀和溢流阀。制动器释放阀可以根据主油路压力自动打开制动器，简化操作步骤。 每侧的液压马达通过行星减速机带动驱动轮来驱动两侧的履带。 行走速度：0.9 km/h（速度随负载的不同而变化）。 最大爬坡能力：30%。

上车

配重	上车有 14 块铸造式配重，其中有 12 块重量为 10t，另两块为 6t。配重底板为焊接结构。中心配重为 40t。
机台	结构钢焊接而成，抗弯性能好。上车配备 2 个卷扬机。
驱动	奔驰 OM 501 LA 型戴姆勒克萊斯勒柴油发动机，功率 290 kW (349 hp)，转速 2000 rpm。发动机符合 Euro III 废气排放标准。
卷扬	上车设备包括二个钢绳卷扬：起升 1 和起重臂的起升。主臂根部有一个卷扬：起升 2。 该卷扬由液压马达通过行星减速机驱动，内藏湿式常闭盘式制动器。采用 LEBUS 卷筒，保证多层缠绕不乱绳。变幅卷筒带有棘轮锁定装置。
回转装置	独立闭式系统，运行平稳无冲击。回转减速机小齿轮与回转轴承为内啮合，小齿轮由回转马达通过行星减速机驱动，常闭盘式制动器。具有缓冲制动油路，使回转制动更平稳。带有回转惯性阀，可精确回转，并实现自动正钩功能。回转速度在 0-1.5 rpm 无级变速控制。
控制系统	整机采用 CAN 总线传输数字信号，稳定可靠，芬兰 EPEC 主、从控制器。德国 Gessmann 电控手柄，具有保安开关，可以避免碰撞引起的误操作。所有的工作速度都可以通过控制拉杆位置进行无级变速控制。德国 HBC 遥控器，使整机拆装更加安全、便捷。Palfin 彩色液晶显示器，亮度可调。显示器可以显示力矩信息，发动机运行参数，吊车液压系统信息、性能表等，当吊车工作异常时，显示器将显示相应故障报警代码供查询。 系统预留了 GPS/GSM 远程诊断及卫星定位系统接口，可根据客户需要订制该系统及服务，只需要通过网络即可随时随地了解机车当前的位置及发动机、液压系统、力矩系统状态并进行远程诊断。
驾驶室	全封闭式驾驶室，冷暖风空调、立体声音响、全方位调整的座椅使操作更舒适，大面积玻璃窗、前照灯、后视镜，使视野更开阔。彩色液晶触摸显示屏、监控器使操作更加方便安全。
电气设备	24 V d.c. 系统（2 个蓄电池，12 V, 165 Ah）。

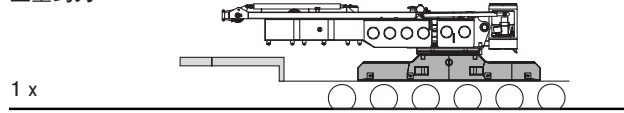
臂杆组合





H:	主臂：根部 11.9 m 标准节：6 m 和 12 m 主臂长度：24-84 m
H + F:	主臂：与 H 相同 主臂长度：36-78 m 副臂长度：9.5 m, 15.5 m, 18.5 m
W:	主臂：与 H 相同 主臂长度：37-67 m 副臂长度：27-69 m
操作员辅助设备	安全电子载荷显示器、独立彩色监视器、力矩限制器、臂架角度及卷扬高度限制开关，风速计和水平仪。

TRANSPORT EXAMPLE · 运输实例

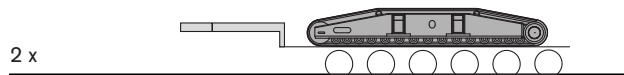
POWERLIFT 8000
拓力 8000

Load approx. 65 t
重量约为 65 t

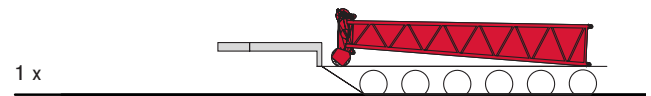


-  Counterweight · 配重
-  Basic machine · 主机
-  Boom combination · 臂杆
-  Low loader · 低架拖车

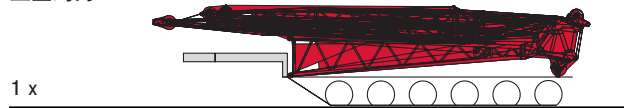
Load 27.1 t
重量 27.1 t



Load 2.7 t
重量 2.7 t



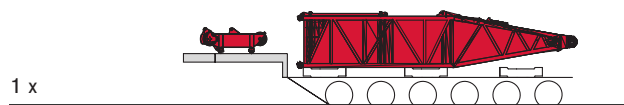
Load approx. 15 t
重量约为 15 t



Load approx. 29 t
重量约为 29 t



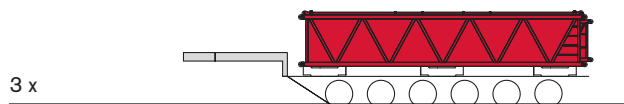
Load 40 t
重量 40 t



Load 4.6 t
重量 4.6 t



Load approx. 38 t
重量约为 38 t



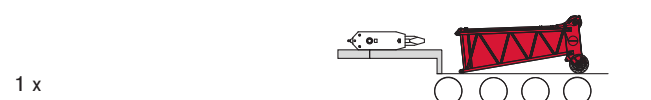
Load 5.5 t
重量 5.5 t



Load approx. 20.5 t
重量约为 20.5 t



Load 10.1 t
重量 10.1 t



NOTES TO LIFTING CAPACITY · 起重能力注释

POWERLIFT 8000
拓力 8000

Ratings are in compliance with ISO 4305 and GB3811.

Weight of hook blocks and slings is part of the load, and is to be deducted from the capacity ratings.

Consult operation manual for further details.

Note: Data published herein is intended as a guide only and shall not be construed to warrant applicability for lifting purposes.

额定起重能力符合 ISO 4305 和 GB3811.

吊钩和吊具的重量是载荷的一部分，应从额定起重能力中扣除。

具体细节请参阅操作手册。

备注： 在此所印数据仅供参考，不完全适用实际吊装操作。

POWERLIFT 8000 拓力 8000

www.terexcranes.com

Effective Date: November 2010. Product specifications and prices are subject to change without notice or obligation. The photographs and/or drawings in this document are for illustrative purposes only. Refer to the appropriate Operator's Manual for instructions on the proper use of this equipment. Failure to follow the appropriate Operator's Manual when using our equipment or to otherwise act irresponsibly may result in serious injury or death. The only warranty applicable to our equipment is the standard written warranty applicable to the particular product and sale and Terex makes no other warranty, express or implied. Products and services listed may be trademarks, service marks or trade-names of Terex Corporation and/or its subsidiaries in the USA and other countries. All rights are reserved. Terex® is a registered trademark of Terex Corporation in the USA and many other countries. Copyright 2010 Terex Corporation.

生效日期：2010年11月。产品技术参数和价格如有更改，恕不另行通知。本文档中的图片和/或图纸仅作举例用途。有关正确使用本设备的说明，请参阅合适的操作手册。如果在使用本设备时，未按照操作手册正确操作，可导致严重的人身伤害或死亡。适用于我们设备的唯一保证是适用于特别产品和销售的标准书写保证，特雷克斯不做任何其他保证、表示或暗示。以上所列产品和服务为特雷克斯公司和/或其子公司在美国和其他国家/地区的商标、服务标记或厂商名称。保留所有版权。Terex®为特雷克斯公司在美国 and 许多其他国家的注册商标。©2010，特雷克斯公司版权所有。

Terex (China) Investment Co., Ltd

8th Floor, Tower B, GATEWAY, No 18 Xiaguangli, North Road, East 3rd Ring, Chaoyang District, Beijing, 100027 China
Phone: +86 10 5907 9000, Fax: +86 10 8440 0628, Email: cranes@terex.com, Web: www.terexcranes.com

特雷克斯（中国）投资有限公司

中国，北京市朝阳区东三环北路霞光里18号佳程广场B座8层，邮编100027
电话：+86 10 5907 9000，传真：+86 10 8440 0628，邮箱：cranes@terex.com，网址：www.terexcranes.com

Terex Topower (Shandong) Heavy Machinery Manufacture Co., Ltd.

Topower Industrial Park, Ming Shui Economic Development Area, Zhangqiu City, Shandong Province
Phone: +86 531 8372 5000, 8372 5016

特雷克斯拓能（山东）重机制造有限公司

山东省章丘市明水经济开发区拓能工业园，电话：+86 531 8372 5000, 8372 5016

Brochure Reference: TC-DS-M-E/C-POWERLIFT 8000 - 11.10

手册参考：TC-DS-M-E/C-拓力8000 - 11.10



WORKS FOR YOU.™