

PK 26002-EH

High Performance

PALFINGER CRANE



KTL
protected

**Paltronic
50**
controlled

RRC
Radio Remote Control
operated

ISC
Integrated Stability Control
monitored

AOS
Active Oscillation Suppression
inside

**DPS
plus**
Dual Power System
activated

The multi-talent with genuine "PALFINGER DNA"

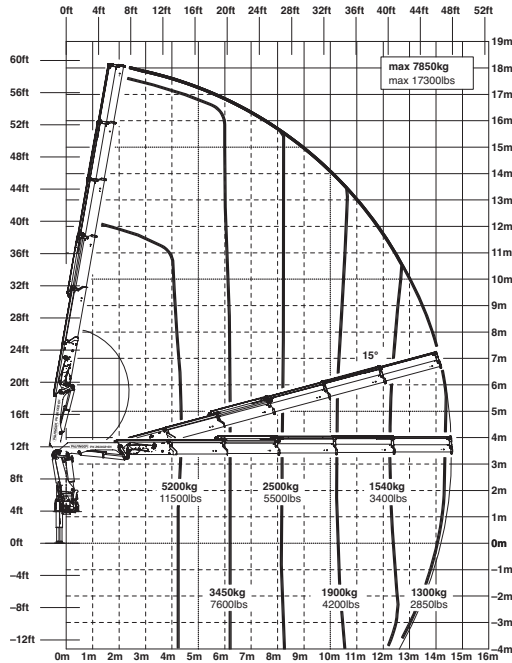
The appeal of the PK 26002 EH lies not merely in its "Electronic High Power Lifting System", but, above all, in its enormous outreach. Due to its manoeuvrability, combined with its compact dimensions, it is in hot demand across all sectors.

A maintenance-free boom system and the use of chromium(VI)-free pipes and small parts as well as water-soluble finishing coats do their part in protecting the environment.

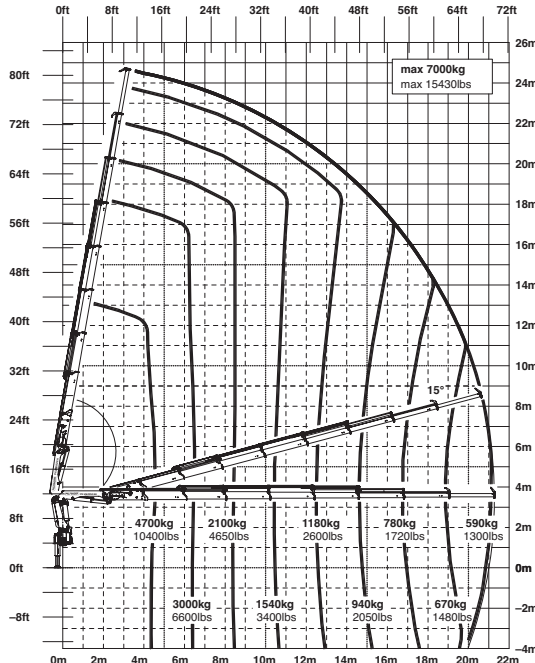
Outreach is its strength.
Its greater lifting capacity
is just the encore.

PK 26002 EH High Performance

D



G



Technical Specifications (EN 12999 H1-B3)

Max. lifting moment	24.9 mt/244.0 kNm	179950 ft.lbs
Max. lifting capacity	8900 kg/87.3 kN	19620 lbs
Max. hydraulic outreach	21.3 m	69' 11"
Max. manual outreach	23.3 m	76' 5"
Max. outreach (with fly jib)	27.2 m	89' 3"
Slewing angle	400 °	

Slewing torque	2.8 mt/27.5 kNm	20260 ft.lbs
Stabilizer spread	std. 5.0 m/16' 5"	max. 7.4 m/24' 3"
Fitting space required (std.)	0.96 m	3' 2"
Width folded	2.53 m	8' 3"
Max. operating pressure	350 bar	5075 psi
Recommended pump capacity	from 75 l/min to 100 l/min	19.8 US gal./min to 26.4 US gal./min
Dead weight (std.)	2583 kg	5690 lbs

