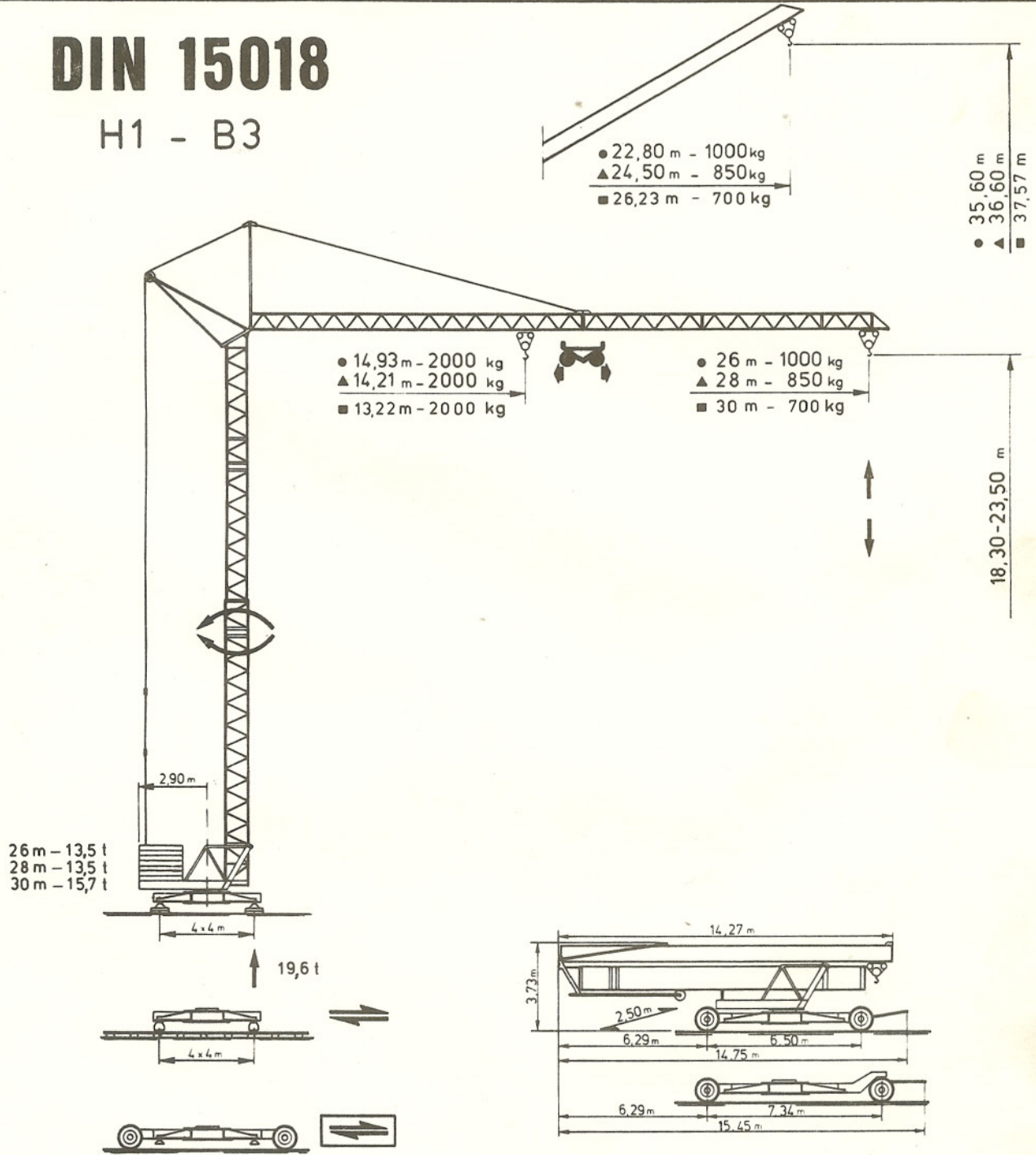


## DIN 15018

H1 - B3



↑ ↓	○		5 m/min	2000 kg	4 PK		30 m/min	2 PK	⚡ 220 - 380V / 50Hz 20 KVA
			22,5 m/min	2000 kg	12 PK		0 → 1	3,5 PK	
			45 m/min	1000 kg	12 PK		25 m/min	2 x 1,5 PK	 35 KVA
			5 m/min	2000 kg	4 PK		10 m/min	7,5 PK	