

Preliminary

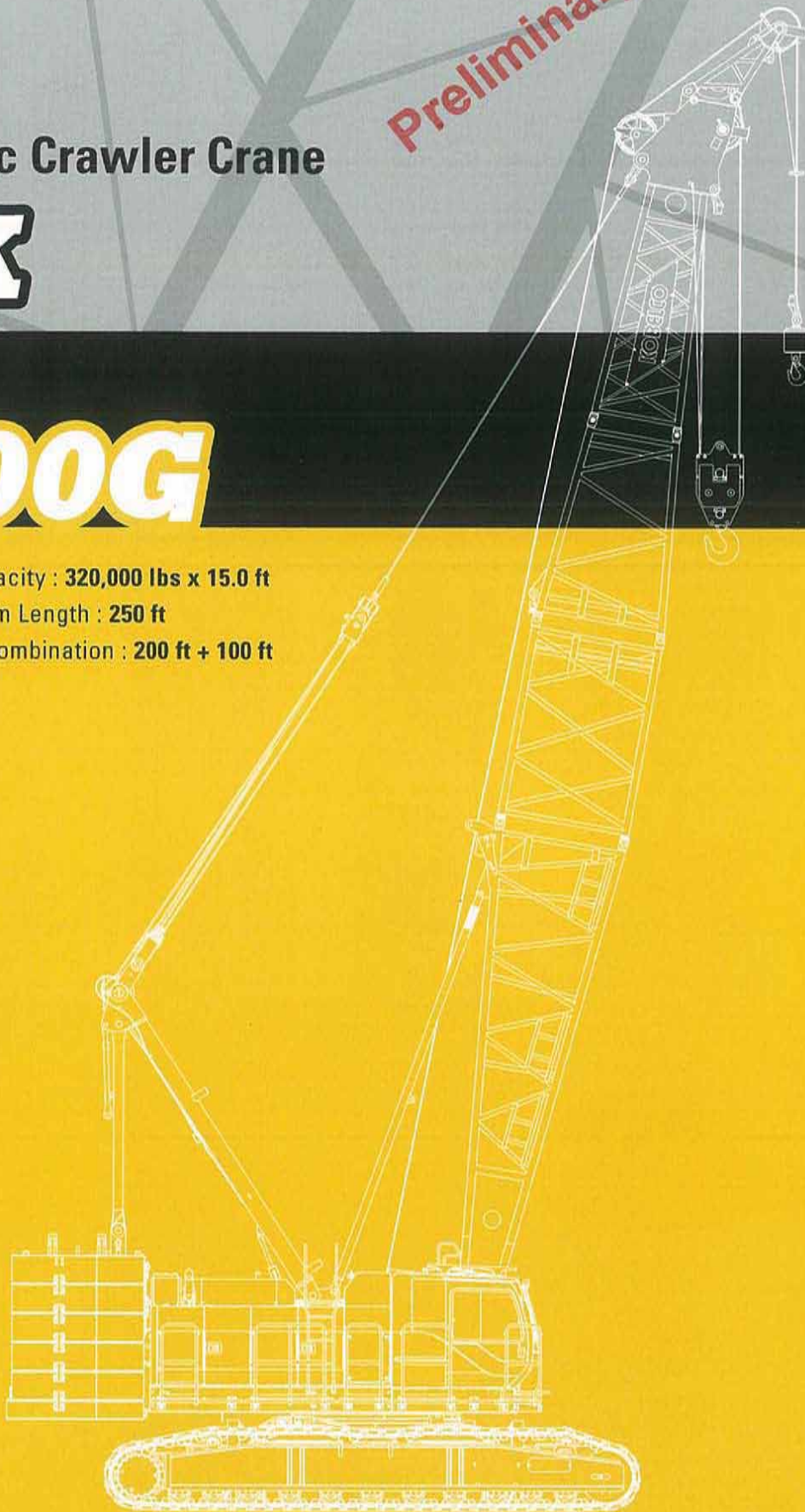
Hydraulic Crawler Crane

CK

1600G

Model : CK1600G

Max. Lifting Capacity : 320,000 lbs x 15.0 ft
Max. Crane Boom Length : 250 ft
Max. Fixed Jib Combination : 200 ft + 100 ft



KOBELCO



CK1600G CONTENTS

3

SPECIFICATIONS

5

GENERAL DIMENSIONS

6

BOOM AND JIB ARRANGEMENTS

7

WORKING RANGES

10

SUPPLEMENTAL DATA

11

LIFTING CAPACITY

21

TRANSPORTATION PLAN

23

PARTS AND ATTACHMENTS

SPECIFICATIONS



Power Plant

Model: HINO P11C-VC

Type: 4 cycle, water-cooled, vertical in-line 6, direct injection, turbo-charger, intercooler

Complies with US EPA Tier Interim Tier IV and NRMM (Europe) Stage IIIB

Displacement: 642 cu in (10.520 liters)

Rated Power: 363 HP/1,850 rpm (271 kW/1,850 min⁻¹)

Max. torque: 1,084 lbf-ft/1,400 rpm (1,469 N-m/1,400 min⁻¹)

Cooling system: Water-cooled

Starter: 24V-6kW

Radiator: Corrugated type core, thermostatically controlled

Air cleaner: Dry type with replaceable paper element

Throttle: Twist grip type hand throttle, electrically actuated

Fuel filter: Replaceable paper element

Batteries: Two 12V x 136 Ah/5HR capacity batteries, series connected

Fuel tank capacity: 106 US gal. (400 liters)



Hydraulic System

Main pumps: 3 variable displacement piston pumps

Control: Full-flow hydraulic control system for infinitely variable pressure to all winches, propel and swing. Controls respond instantly to the touch, delivering smooth function operation.

Cooling: Oil-to-air heat exchanger (plate-fin type)

Filtration: Full-flow and bypass type with replaceable element

Electrical system: All wiring corded for easy servicing, individual fused branch circuits.

Max. relief valve pressure:

Load hoist, boom hoist and propel system:

4,626 psi (31.9 MPa)

Swing system: 3,989 psi (27.5 MPa)

Control system: 783 psi (5.4 MPa)

Hydraulic tank capacity: 141.3 US gal. (535 liters)



Boom Hoisting System

Powered by a hydraulic motor through a planetary reducer.

Brake: A spring-set, hydraulically released multiple-disc brake is mounted on the boom hoist motor and operated through a counter-balance valve.

Drum lock: External ratchet for locking drum

Drum: Single drum, grooved for 25/32 inch (20 mm) dia. wire rope

Line speed: Single line on first drum layer

Hoisting/Lowering: 175 to 6.6 ft/min (48 to 2 m/min)

Diameter of wire rope

Main winch: 1-1/32 in. x 902 ft. (26 mm x 275 m)

Aux. winch: 1-1/32 in. x 837 ft. (26 mm x 255 m)

Third winch: 1-1/32 in. x 787 ft. (26 mm x 240 m)

Boom hoisting/lowering: 25/32 in. x 623 ft (20 mm x 190 m)

Boom guy line: 1-3/16 in. (30 mm)

Boom backstops: Required for all boom length



Load Hoist System

Front and rear drums for load hoist powered by a hydraulic variable plunger motors, driven through planetary reducers.

Negative brake: A spring-set, hydraulically released multiple-disc brake is mounted on the hoist motor and operated through a counter-balance valve. (Positive free fall brake is optional)

Drum lock: External ratchet for locking drum

Drums:

Front drums:

2ft 2-3/16 inch (666 mm) P.C.D x 2 ft 2-15/32 inch (672 m)

Lg., grooved for 1-1/32 inch (26 mm) wire rope. Rope capacity is 902 ft (275 m) working length and 1,148 ft (350 m) storage length.

Rear drums:

2 ft 2-3/16 inch (666 mm) P.C.D x 2 ft 2-15/32 inch (672 m)

Lg., grooved for 1-1/32 inch (26 mm) wire rope. Rope capacity is 837 ft (255 m) working length and 1,148 ft (350m) storage length.

Line speed: Single line on the first layer

Hoisting/Lowering: 394 to 10 ft

Line pull:

Max. line pull (Single line): 52,500 lbs (233 kN)

Rated line pull: 29,500 lbs (132 kN)



Swing System

Swing unit is powered by hydraulic motor driving spur gears through planetary reducers (2 set), the swing system provides 360° rotation.

Swing parking brakes: A spring-set, hydraulically released multiple-disc brake is mounted on swing motor.

Swing circle: Single-row ball bearing with an integral internally cut swing gear.

Swing lock: Manually, four position lock for transportation

Swing speed: 2.1 rpm (min⁻¹)



Upper Structure

Torsion-free precision machined upper frame. All components are located clearly and service friendly. Engine will with low noise level.

Counter weight: 121,300 lbs



Cab & Control

Totally enclosed, full vision cab with safety glass, fully adjustable, high backed seat with a headrest and armrests, and intermittent wiper and window washer (skylight and front window).

Cab fittings:

Air conditioner, convenient compartment (for tool), cup holder, ashtray, cigarette lighter, sun visor, roof blind, tinted glass, floor mat, footrest, shoe tray, and foot acceleration pedal.

Controls:

Four adjustable levers for front drum, rear drum, boom drum and swing controls.

**Lower Structure**

Steel-welded carbody with axles. Crawler assemblies are designed with quick disconnect feature for individual removal as a unit from axles. Crawler belt tension is maintained by hydraulic jack force on the track adjusting bearing block.

Carbodyweight: 23,810 lbs

Crawler drive: Independent hydraulic propel drive is built into each crawler side frame. Each drive consists of a hydraulic motor propelling a driving tumbler through a planetary gear box. Hydraulic motor and gear box are built into the crawler side frame within the shoe width.

Crawler brakes: Spring-set, hydraulically released parking brakes are built into each propel drive.

Steering mechanism: A hydraulic propel system provides both skid steering (driving one track only) and counter-rotating steering (driving each track in opposite directions).

Track rollers: Sealed track rollers for maintenance-free operation.

Shoe (flat): 4 ft wide each crawler

Max. gradeability: 30%

**Weight**

Including upper and lower machine, 121,300 lbs counterweight and 23,810 lbs carbody weight, basic boom (or basic boom + basic jib), hook, and other accessories.

Weight: 304,200 lbs (136 t)

Ground pressure: 11.7 psi (106 kPa)

**Attachment****Boom and Jib:**

Welded lattice construction using tubular, high-tensile steel chords with pin connections between sections.

Boom and Jib Length

	Min. Length (Min. Combination)	Max. Length (Max. Combination)
Crane Boom	50 ft	250 ft
Fixed Jib	90 ft + 40 ft	200 ft + 100 ft

Main Specifications (Model: CK1600G)

Crane Boom	
Max. Lifting Capacity	320,000 lbs
Length	50 ~ 250 ft
Fixed Jib	
Max. Lifting Capacity	59,000 lbs
Max. Length	100 ft
Max. Combination	200 ft + 100 ft
Power Plant	
Model	HINO P11C-VC
Engine Output	363 HP/1,850 rpm
Fuel Tank Capacity	106 US gal. (400 liters)
Main & Aux. Winch	
Max. Line Speed	390 ft/min (120 m/min): 1st layer
Rated Line Pull (single Line)	29,500 lbs (132 kN)
Wire Rope Diameter	1-1/32 in (26 mm)
Brake Type	Spring set hydraulically released (Negative)

Working Speed

Swing Speed	2.1 rpm (min ⁻¹)
Travel Speed	0.70/0.56 mph

Hydraulic System

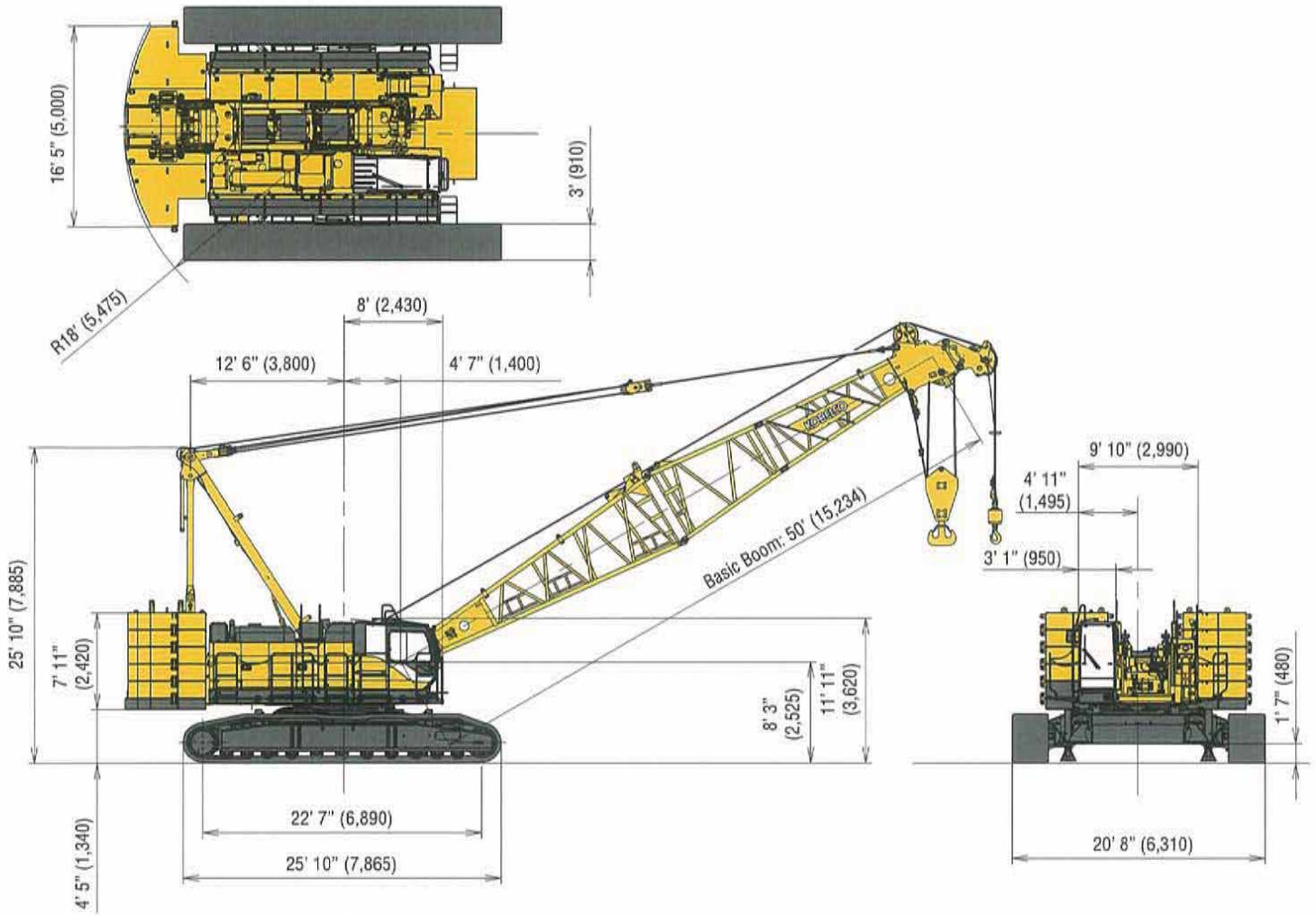
Main pumps	3 variable displacement
Max. Pressure	4,626 psi (31.9 MPa)
Hydraulic Tank Capacity	141.3 US gal. (535 liters)

Weight

Operating Weight	304,200 lbs (136 t)
Ground Pressure	11.7 psi (106 kPa)
Counterweight	121,300 lbs
Transport Weight	84,193 lbs

GENERAL DIMENSIONS

Unit: ft-in (mm)



BOOM AND JIB ARRANGEMENTS

Crane Boom Arrangements

Boom length ft (m)	Boom arrangement
50 (15.2)	
60 (18.3)	※
70 (21.3)	※
80 (21.3)	※
90 (27.4)	※
	※
	※
100 (30.5)	※
	※
110 (33.5)	※
	※
	※
120 (36.6)	※
130 (39.6)	※
	※
	※
140 (42.7)	※
	※
150 (45.7)	※
	※
	※
160 (48.8)	※
170 (51.8)	※
	※
	※

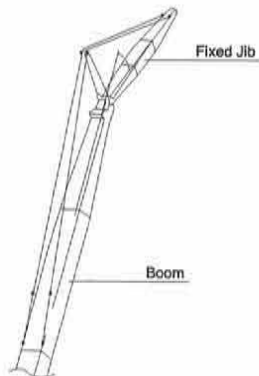
Boom length ft (m)	Boom arrangement
180 (54.9)	※
	※
190 (57.9)	※
	※
	※
200 (61.0)	※
210 (64.0)	※
	※
	※
220 (67.1)	※
	※
230 (70.1)	※
	※
	※
240 (73.2)	※
250 (76.2)	※
	※
	※

Symbol	Boom Length	Remarks
	25.0 ft (7.6 m)	Boom Base
	15.0 ft (4.5 m)	Boom Top
	10.0 ft (3.1 m)	Tapered Boom
	10.0 ft (3.1 m)	Insert Boom
	20.0 ft (6.1 m)	Insert Boom
	40.0 ft (12.2 m)	Insert Boom

↗ mark shows the guy line installing position when the fixed jib is used.

※ indicates the most flexible combination of insert luffing booms, which can be modified to form all shorter luffing boom arrangements.

Fixed Jib Arrangements

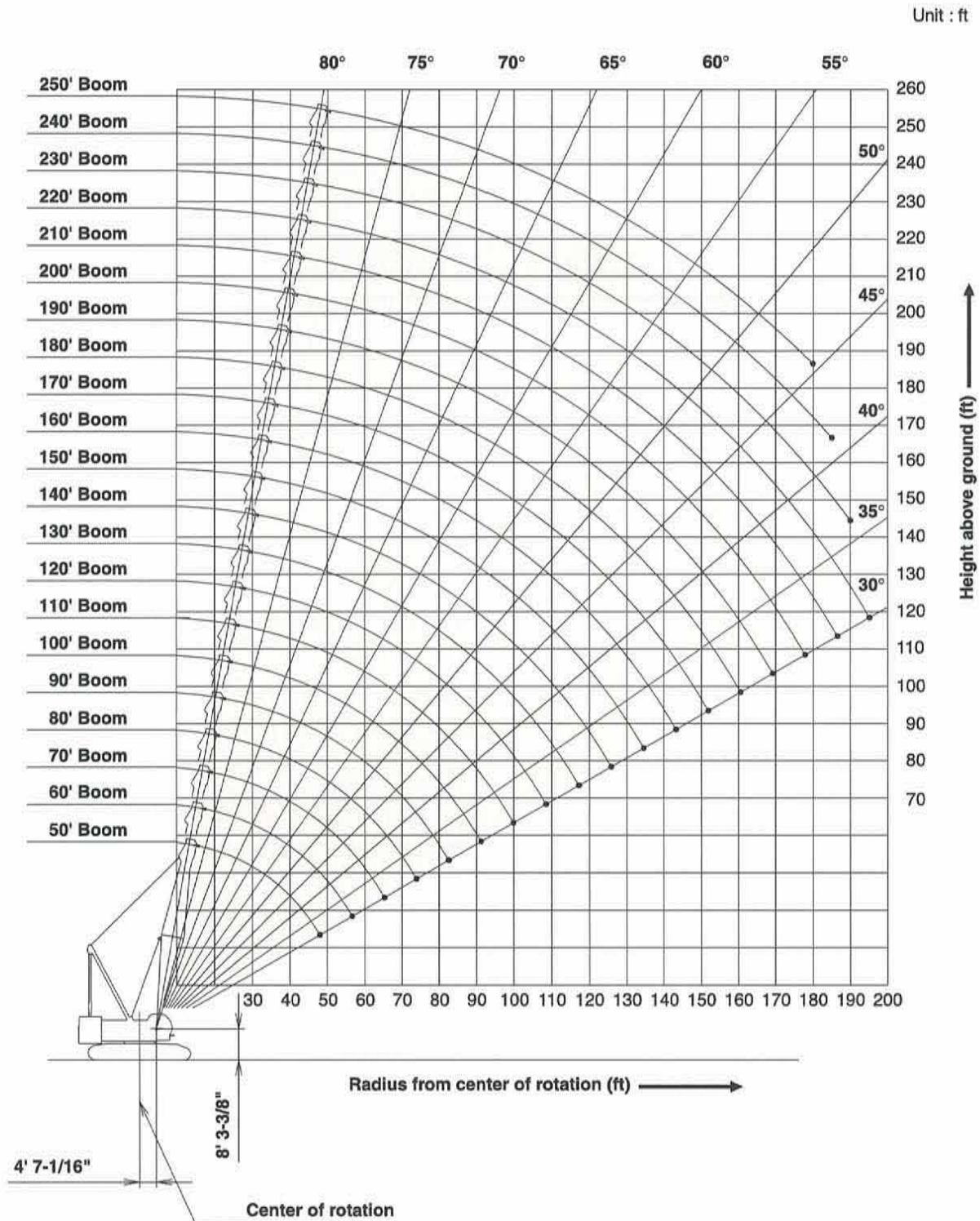


Crane boom length	Jib length ft (m)	Jib arrangement
90 ft (27.4 m)	40 (12.2)	
	60 (18.3)	
200 ft (61.0 m)	80 (24.4)	
	100 (30.5)	

Symbol	Jib Length	Remarks
	15 ft (4.6 m)	Jib Base
	15 ft (4.6 m)	Jib Top
	10 ft (3.0 m)	Insert Jib
	20 ft (6.1 m)	Insert Jib

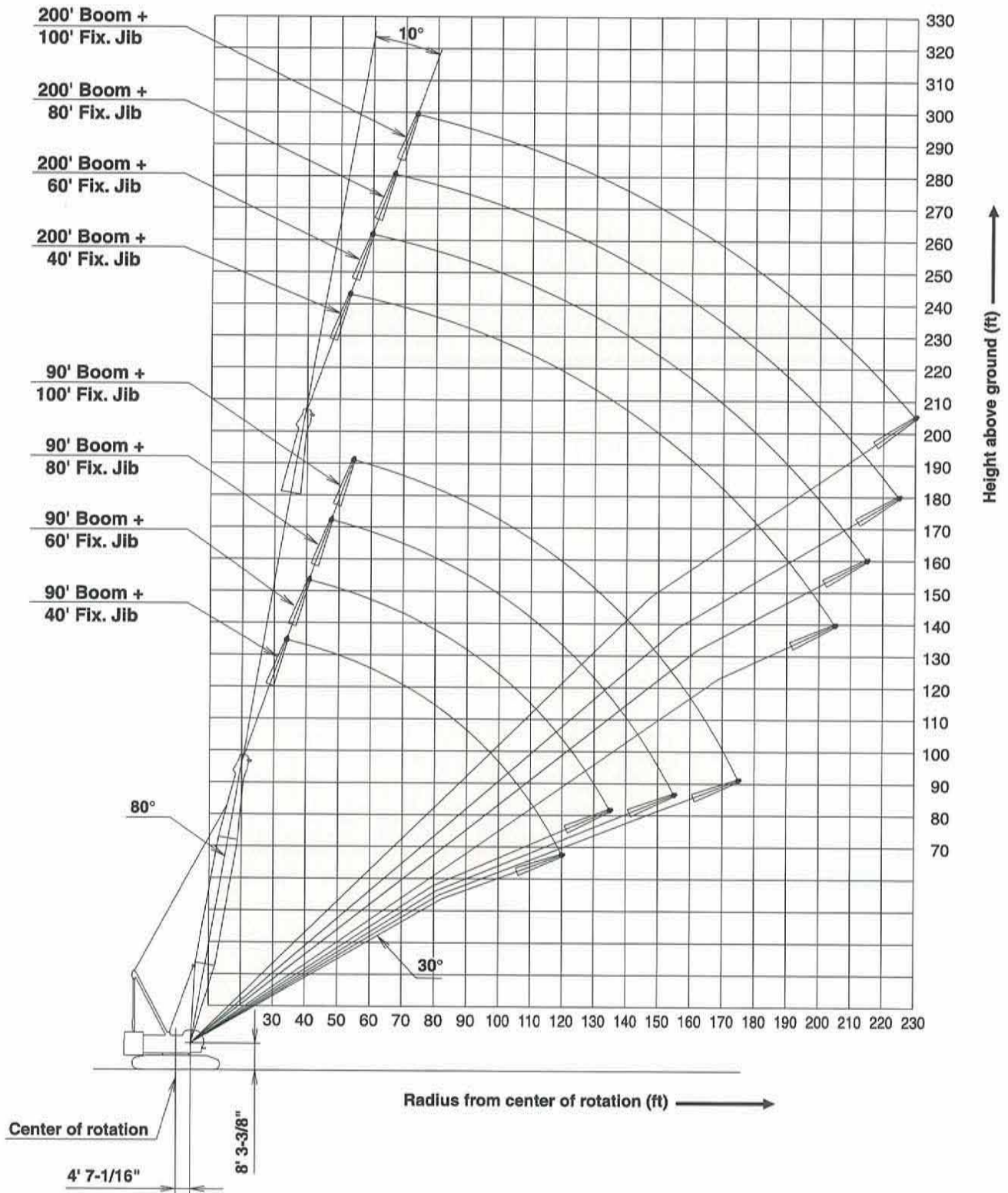
WORKING RANGES

Main Boom



Fixed Jib 10° (With Additional Counterweight)

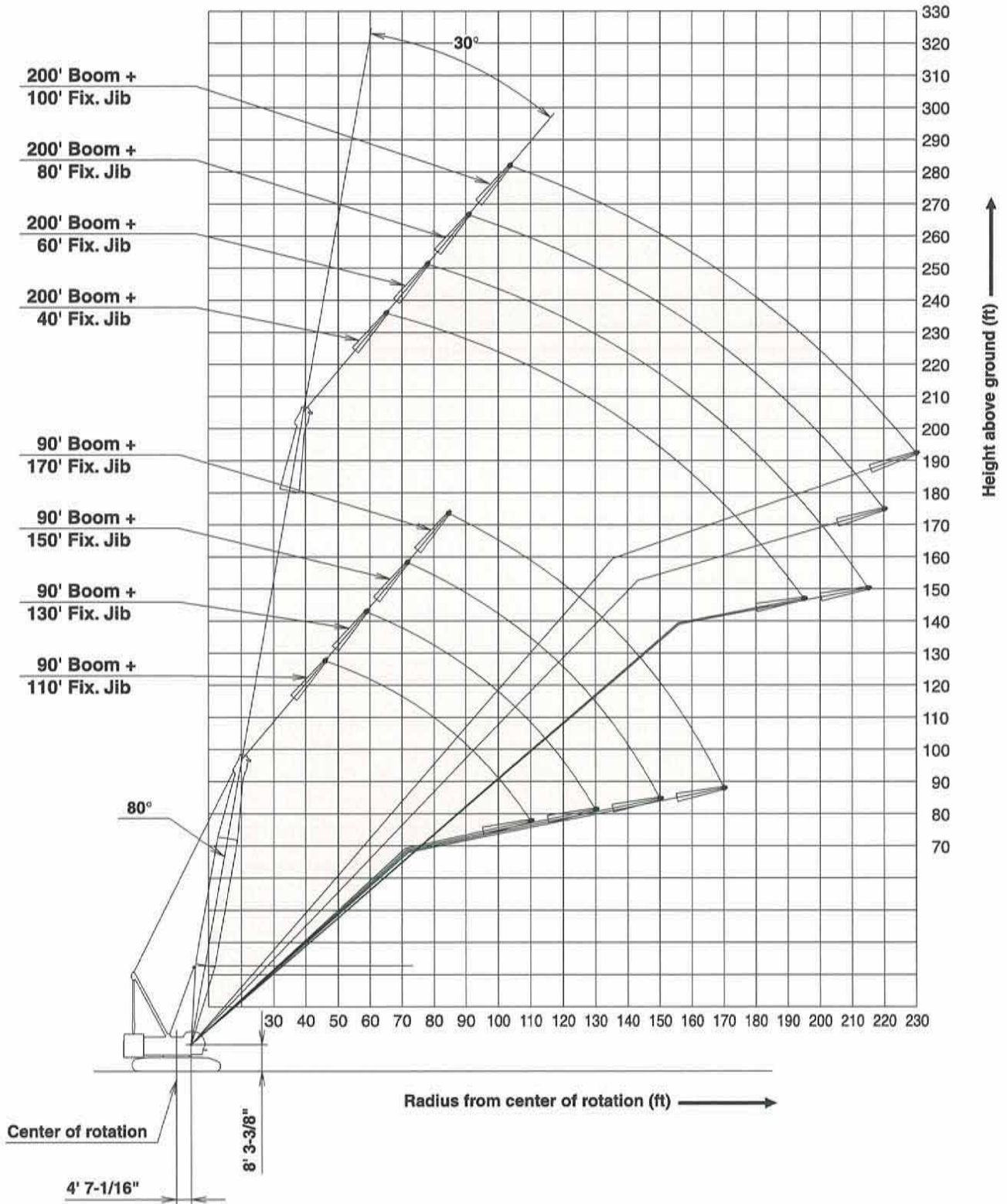
Unit : ft



WORKING RANGES

Fixed Jib 30°

Unit : ft



SUPPLEMENTAL DATA

1. Rated loads included in the charts are the maximum allowable freely suspended loads at a given boom length, boom angle and load radius, and have been determined for the machine standing level on firm supporting surface under ideal operating conditions. The user must limit or de-rate rated loads to allow for adverse conditions (such as soft or uneven ground, out-of-level conditions, wind, side loads, pendulum action, jerking or sudden stopping of loads, inexperience of personnel, multiple machine lifts, and traveling with a load).

2. Capacities do not exceed 75% of minimum tipping loads. Capacities based on factors other than machine stability such as structural competence are shown by asterisk * in the charts.

3. The machine must be reeved and set-up as stated in the operation manual and all the instruction manuals if these manuals are missing, obtain replacements.

- Boom backstops are required for all boom lengths.
- Gantry must be fully raised position for all operations.
- The crane must be leveled to within 1% on a firm supporting surface.

4. Do not attempt to lift where no radius on load is listed as crane may tip or collapse.

5. Attempting to lift more than rated loads may cause machine to tip or collapse. Do not tip machine to determine capacity.

6. Weight of hooks, hook blocks, slings and other lifting devices are a part of the total load. Their total weight must be subtracted from the rated load to obtain the weight that can be lifted.

7. When lifting over boom point with jib or auxiliary sheave, rated loads for the boom must be deducted as shown below.

Jib length	Aux.	40'	60'	80'	100'
Deduct (lbs)	1,200	7,055	8,010	8,965	9,920

8. The total load that can be lifted over a jib is limited by rated jib loads.

9. Boom lengths for jib mounting are 90 ft (27.4 m) to 200 ft (61.0 m).

10. 12.2 m (40 ft) jib length with offset angle 10 degrees, one part of line on hook is not allowed to use.

11. The total load that can be lifted over an auxiliary sheave is the value for 1,250 lbs deducted from rated load for the boom without auxiliary sheave, but it should not exceed 59,000 lbs.

12. Boom lengths that can attach auxiliary sheave are from 50 ft (15.2 m) to 240 ft (73.2 m).

13. The boom should be erected over the front of the crawlers, not laterally.

When erecting and lowering the boom at length of 240 ft (73.2m) or over, the blocks for erection must be placed at the end of the crawlers.

14. Least stable position is over the side.

15. Maximum hoist load for number of reeving parts of line for hoist rope.

Main Boom Hoist Loads

No. of Parts of Line	1	2	3	4	5
Maximum Loads (lbs)	25,000	50,000	75,000	100,000	125,000

No. of Parts of Line	6	7	8	9	10
Maximum Loads (lbs)	150,000	175,000	200,000	225,000	240,000

Jib Hoist Loads

No. of Parts of Line	1
Maximum Loads (lbs)	24,000

Auxiliary Hoist Loads

No. of Parts of Line	1	2
Maximum Loads (lbs)	24,000	50,000

16. Weight of recommended hook block.

Hook block	160 US t	110 US t	70 US t	30 US t	15 US t ball hook
Weight(lbs)	5,275	3,960	2,775	2,200	1,315

17. Lifting capacities listed apply only to the machine as originally manufactured and designed by KOBELCO CRANES CO.,LTD.

Modifications to this machine or use of equipment other than that specified can reduce operating capacity.

18. Designed and rated to comply with ANSI Code B30.5.

Operation of this equipment in excess of rated loads or disregard of instruction voids the warranty.

LIFTING CAPACITY

Crane Boom Lifting Capacity

Unit: lbs

Counterweight: 121,300 lbs, Carbody weight: 23,810 lbs

50' Boom			60' Boom			70' Boom			80' Boom		
Load Radius (ft)	Boom Angle (deg.)	360° Rated Load (lbs)	Load Radius (ft)	Boom Angle (deg.)	360° Rated Load (lbs)	Load Radius (ft)	Boom Angle (deg.)	360° Rated Load (lbs)	Load Radius (ft)	Boom Angle (deg.)	360° Rated Load (lbs)
15.0	79.9	320,000 *	17.0	79.6	280,000 *	19.0	79.5	251,100 *	22.0	78.6	211,800 *
16.0	78.7	300,100 *	18.0	78.7	266,000 *	20.0	78.6	238,500 *	24.0	77.1	190,200 *
17.0	77.5	282,500 *	19.0	77.7	251,900 *	22.0	76.9	217,100 *	26.0	75.7	172,600 *
18.0	76.3	266,800 *	20.0	76.7	239,300 *	24.0	75.3	194,600 *	28.0	74.2	157,800 *
19.0	75.1	252,700 *	22.0	74.7	218,000 *	26.0	73.5	176,300 *	30.0	72.7	145,500 *
20.0	73.9	240,100 *	24.0	72.7	197,500 *	28.0	71.8	160,900 *	32.0	71.1	134,400
22.0	71.5	218,300 *	26.0	70.7	178,300 *	30.0	70.1	147,900 *	34.0	69.6	123,000
24.0	69.1	197,700 *	28.0	68.6	162,200 *	32.0	68.3	134,700	36.0	68.1	113,300
26.0	66.5	177,400 *	30.0	66.5	148,300	34.0	66.5	123,400	38.0	66.5	105,100
28.0	64.0	160,400 *	32.0	64.4	134,900	36.0	64.7	113,700	40.0	64.9	97,800
30.0	61.4	145,900 *	34.0	62.2	123,600	38.0	62.8	105,500	45.0	60.8	83,300
32.0	58.7	133,300 *	36.0	60.0	113,900	40.0	61.0	98,300	50.0	56.6	72,300
34.0	55.9	122,100 *	38.0	57.7	105,800	45.0	56.1	83,700	55.0	52.1	63,900
36.0	53.0	112,200 *	40.0	55.4	98,500	50.0	50.9	72,700	60.0	47.4	56,800
38.0	50.0	103,300 *	45.0	49.3	83,900	55.0	45.3	64,300	65.0	42.2	51,300
40.0	46.8	95,200 *	50.0	42.4	72,000 *	60.0	39.0	57,300 *	70.0	36.3	46,700 *
45.0	38.0	76,900 *	55.0	34.4	60,100 *	65.0	31.7	48,700 *	75.0	29.5	40,300 *
Reeves		11	Reeves		10	Reeves		9	Reeves		8
90' Boom			100' Boom			110' Boom			120' Boom		
Load Radius (ft)	Boom Angle (deg.)	360° Rated Load (lbs)	Load Radius (ft)	Boom Angle (deg.)	360° Rated Load (lbs)	Load Radius (ft)	Boom Angle (deg.)	360° Rated Load (lbs)	Load Radius (ft)	Boom Angle (deg.)	360° Rated Load (lbs)
22.0	79.9	207,600 *	24.0	79.8	183,400 *	26.0	79.6	164,200 *	28.0	79.5	147,000 *
24.0	78.6	186,500 *	26.0	78.6	166,400 *	28.0	78.6	150,100 *	30.0	78.6	135,500 *
26.0	77.3	169,000 *	28.0	77.4	152,300 *	30.0	77.5	138,200 *	32.0	77.6	125,600 *
28.0	76.0	154,700 *	30.0	76.2	140,400 *	32.0	76.4	128,300 *	34.0	76.6	117,000 *
30.0	74.6	142,600 *	32.0	75.0	130,200 *	34.0	75.4	119,400 *	36.0	75.6	109,500 *
32.0	73.3	132,200 *	34.0	73.8	121,400 *	36.0	74.3	111,900 *	38.0	74.6	102,900 *
34.0	72.0	122,700	36.0	72.6	112,800	38.0	73.2	104,400	40.0	73.6	96,700
36.0	70.6	113,000	38.0	71.4	104,700	40.0	72.1	97,200	45.0	71.1	82,200
38.0	69.3	104,700	40.0	70.2	97,400	45.0	69.3	82,600	50.0	68.6	71,200
40.0	67.9	97,400	45.0	67.1	82,800	50.0	66.5	71,600	55.0	65.9	62,600
45.0	64.4	82,800	50.0	63.9	71,800	55.0	63.6	63,000	60.0	63.3	55,500
50.0	60.8	72,000	55.0	60.7	63,200	60.0	60.6	56,200	65.0	60.6	50,000
55.0	57.0	63,400	60.0	57.3	56,400	65.0	57.5	50,400	70.0	57.8	45,100
60.0	53.1	56,400	65.0	53.8	50,700	70.0	54.4	45,600	75.0	54.9	41,200
65.0	48.9	50,900	70.0	50.1	46,000	75.0	51.1	41,600	80.0	51.9	37,600
70.0	44.4	46,200	75.0	46.2	41,800	80.0	47.6	38,300	85.0	48.7	34,800
75.0	39.6	42,300	80.0	42.0	38,500	85.0	43.9	35,200	90.0	45.4	32,100
80.0	34.1	38,800 *	85.0	37.4	35,700	90.0	39.9	32,800	95.0	41.9	29,900
			90.0	32.3	32,800 *	95.0	35.6	30,400	100.0	38.1	27,900
						100.0	30.7	27,900 *	105.0	34.0	26,000
Reeves		8	Reeves		7	Reeves		6	Reeves		5

Note: Designed and rated to comply with ANSI Code B30.5.

Capacities based on factors other than machine stability such as structural competence are shown by asterisk * in the charts.

Refer to notes P10.



Crane Boom Lifting Capacity

Unit: lbs

Counterweight: 121,300 lbs, Carbody weight: 23,810 lbs

130' Boom			140' Boom			150' Boom			160' Boom		
Load Radius (ft)	Boom Angle (deg.)	360° Rated Load (lbs)	Load Radius (ft)	Boom Angle (deg.)	360° Rated Load (lbs)	Load Radius (ft)	Boom Angle (deg.)	360° Rated Load (lbs)	Load Radius (ft)	Boom Angle (deg.)	360° Rated Load (lbs)
30.0	79.5	134,000 *	32.0	79.4	122,100 *	34.0	79.3	112,600 *	34.0	80.0	110,800 *
32.0	78.6	124,100 *	34.0	78.5	113,500 *	36.0	78.5	105,100 *	36.0	79.3	103,600 *
34.0	77.7	115,500 *	36.0	77.7	106,200 *	38.0	77.8	98,700 *	38.0	78.5	97,000 *
36.0	76.7	108,200 *	38.0	76.9	99,800 *	40.0	77.0	93,000 *	40.0	77.8	91,200 *
38.0	75.8	101,600 *	40.0	76.0	94,100 *	45.0	75.0	81,100 *	45.0	76.0	79,500 *
40.0	74.9	95,600 *	45.0	73.9	81,700	50.0	73.0	70,500	50.0	74.1	70,100
45.0	72.6	82,000	50.0	71.7	70,700	55.0	71.0	61,900	55.0	72.2	61,500
50.0	70.3	70,900	55.0	69.6	62,100	60.0	69.0	54,800	60.0	70.3	54,600
55.0	67.9	62,300	60.0	67.4	55,100	65.0	66.9	49,100	65.0	68.4	48,900
60.0	65.5	55,500	65.0	65.1	49,300	70.0	64.8	44,500	70.0	66.5	44,000
65.0	63.0	49,800	70.0	62.8	44,700	75.0	62.6	40,300	75.0	64.5	40,100
70.0	60.5	44,900	75.0	60.5	40,700	80.0	60.4	37,000	80.0	62.5	36,500
75.0	57.9	41,000	80.0	58.1	37,200	85.0	58.2	33,900	85.0	60.4	33,500
80.0	55.3	37,400	85.0	55.6	34,100	90.0	55.9	31,300	90.0	58.3	30,800
85.0	52.5	34,600	90.0	53.1	31,700	95.0	53.6	29,100	95.0	56.2	28,600
90.0	49.7	31,900	95.0	50.5	29,300	100.0	51.1	26,800	100.0	54.0	26,600
95.0	46.7	29,700	100.0	47.7	27,300	105.0	48.6	25,100	105.0	51.7	24,600
100.0	43.5	27,500	105.0	44.9	25,300	110.0	46.0	23,300	110.0	49.4	23,100
105.0	40.2	25,700	110.0	41.8	23,800	115.0	43.2	22,000	115.0	47.0	21,600
110.0	36.6	24,200	115.0	38.6	22,200	120.0	40.3	20,700	120.0	44.4	20,200
115.0	32.6	22,700 *	120.0	35.2	20,900	125.0	37.2	19,400	125.0	41.8	18,900
			125.0	31.4	19,600 *	130.0	33.9	18,200 *	130.0	39.0	17,800
						135.0	30.2	16,500 *	135.0	36.0	16,700
									140.0	32.8	15,600 *
Reeves		5	Reeves		5	Reeves		4	Reeves		4
170' Boom			180' Boom			190' Boom			200' Boom		
Load Radius (ft)	Boom Angle (deg.)	360° Rated Load (lbs)	Load Radius (ft)	Boom Angle (deg.)	360° Rated Load (lbs)	Load Radius (ft)	Boom Angle (deg.)	360° Rated Load (lbs)	Load Radius (ft)	Boom Angle (deg.)	360° Rated Load (lbs)
36.0	79.9	102,000 *	38.0	79.8	88,400 *	40.0	79.8	88,100 *	45.0	78.8	75,100 *
38.0	79.2	95,600 *	40.0	79.2	88,400 *	45.0	78.2	76,400 *	50.0	77.3	66,100 *
40.0	78.5	89,900 *	45.0	77.6	77,600 *	50.0	76.7	67,200 *	55.0	75.9	58,800 *
45.0	76.8	78,200 *	50.0	75.9	68,500 *	55.0	75.1	59,900 *	60.0	74.4	52,900 *
50.0	75.1	69,200 *	55.0	74.3	61,000 *	60.0	73.5	53,700	65.0	72.9	47,600
55.0	73.3	61,200	60.0	72.6	54,000	65.0	72.0	48,000	70.0	71.4	42,900
60.0	71.5	54,200	65.0	70.9	48,200	70.0	70.4	43,200	75.0	69.9	38,800
65.0	69.7	48,500	70.0	69.2	43,600	75.0	68.7	39,200	80.0	68.3	35,200
70.0	67.9	43,800	75.0	67.5	39,400	80.0	67.1	35,700	85.0	66.8	32,400
75.0	66.1	39,600	80.0	65.8	36,100	85.0	65.5	32,600	90.0	65.2	29,700
80.0	64.2	36,300	85.0	64.0	33,000	90.0	63.8	29,900	95.0	63.6	27,300
85.0	62.3	33,200	90.0	62.2	30,400	95.0	62.1	27,700	100.0	62.0	25,300
90.0	60.4	30,600	95.0	60.4	27,900	100.0	60.4	25,500	105.0	60.3	23,300
95.0	58.4	28,200	100.0	58.5	26,000	105.0	58.6	23,800	110.0	58.7	21,800
100.0	56.4	26,200	105.0	56.6	24,000	110.0	56.8	22,000	115.0	57.0	20,200
105.0	54.4	24,400	110.0	54.7	22,400	115.0	55.0	20,500	120.0	55.2	18,700
110.0	52.2	22,700	115.0	52.7	20,900	120.0	53.1	19,100	125.0	53.5	17,600
115.0	50.1	21,100	120.0	50.6	19,600	125.0	51.2	18,000	130.0	51.6	16,500
120.0	47.8	19,800	125.0	48.5	18,200	130.0	49.2	16,700	135.0	49.8	15,400
125.0	45.5	18,700	130.0	46.4	17,100	135.0	47.2	15,800	140.0	47.9	14,300
130.0	43.0	17,400	135.0	44.1	16,000	140.0	45.0	14,700	145.0	45.9	13,400
135.0	40.5	16,500	140.0	41.7	15,200	145.0	42.9	13,800	150.0	43.8	12,700
140.0	37.8	15,400	145.0	39.3	14,300	150.0	40.6	13,000	155.0	41.7	11,900
145.0	34.9	14,500	150.0	36.6	13,400 *	155.0	38.2	12,300 *	160.0	39.5	11,200 *
150.0	31.8	13,200 *	155.0	33.8	12,300 *	160.0	35.6	11,200 *	165.0	37.1	10,300 *
			160.0	30.8	11,000 *	165.0	32.9	10,100 *	170.0	34.7	9,200 *
						170.0	30.0	9,000 *	175.0	32.0	8,300 *
Reeves		4	Reeves		3	Reeves		3	Reeves		3

Note: Designed and rated to comply with ANSI Code B30.5.

Capacities based on factors other than machine stability such as structural competence are shown by asterisk * in the charts.

Refer to notes P10.

LIFTING CAPACITY

Crane Boom Lifting Capacity

Unit: lbs

Counterweight: 121,300 lbs, Carbody weight: 23,810 lbs

210' Boom			220' Boom			230' Boom			240' Boom		
Load Radius (ft)	Boom Angle (deg.)	360° Rated Load (lbs)	Load Radius (ft)	Boom Angle (deg.)	360° Rated Load (lbs)	Load Radius (ft)	Boom Angle (deg.)	360° Rated Load (lbs)	Load Radius (ft)	Boom Angle (deg.)	360° Rated Load (lbs)
45.0	79.4	73,800 *	45.0	79.8	58,800 *	50.0	79.0	58,800 *	50.0	79.5	54,400 *
50.0	78.0	65,000 *	50.0	78.5	58,800 *	55.0	77.7	55,700 *	55.0	78.3	51,300 *
55.0	76.6	57,700 *	55.0	77.2	57,700 *	60.0	76.5	50,700 *	60.0	77.0	48,200 *
60.0	75.1	51,800 *	60.0	75.8	51,800 *	65.0	75.2	45,800 *	65.0	75.8	44,700 *
65.0	73.7	46,900 *	65.0	74.5	46,700 *	70.0	73.9	41,400 *	70.0	74.6	40,500 *
70.0	72.3	42,500 *	70.0	73.1	42,300 *	75.0	72.6	37,900 *	75.0	73.3	37,000 *
75.0	70.9	38,300	75.0	71.8	38,300	80.0	71.3	34,600	80.0	72.1	33,700 *
80.0	69.4	34,800	80.0	70.4	34,800	85.0	69.9	31,500	85.0	70.8	31,000 *
85.0	67.9	31,900	85.0	69.0	31,700	90.0	68.6	28,800	90.0	69.5	28,400
90.0	66.5	29,300	90.0	67.6	29,100	95.0	67.3	26,400	95.0	68.3	26,000
95.0	64.9	26,800	95.0	66.2	26,800	100.0	65.9	24,400	100.0	67.0	24,000
100.0	63.4	24,900	100.0	64.7	24,600	105.0	64.5	22,400	105.0	65.7	22,000
105.0	61.9	22,900	105.0	63.3	22,900	110.0	63.1	20,900	110.0	64.3	20,500
110.0	60.3	21,300	110.0	61.8	21,100	115.0	61.7	19,400	115.0	63.0	18,900
115.0	58.7	19,800	115.0	60.3	19,600	120.0	60.3	17,800	120.0	61.7	17,600
120.0	57.1	18,500	120.0	58.8	18,200	125.0	58.8	16,700	125.0	60.3	16,300
125.0	55.5	17,100	125.0	57.2	16,900	130.0	57.4	15,400	130.0	58.9	15,200
130.0	53.8	16,000	130.0	55.7	15,800	135.0	55.9	14,500	135.0	57.5	14,100
135.0	52.1	14,900	135.0	54.1	14,700	140.0	54.3	13,400	140.0	56.0	13,000
140.0	50.3	13,800	140.0	52.4	13,800	145.0	52.8	12,500	145.0	54.6	12,100
145.0	48.5	13,000	145.0	50.8	13,000	150.0	51.2	11,600	150.0	53.1	11,000
150.0	46.6	12,300	150.0	49.1	12,100	155.0	49.6	10,800	155.0	51.6	10,300
155.0	44.7	11,400	155.0	47.3	11,200	160.0	47.9	9,900	160.0	50.0	9,400
160.0	42.7	10,500	160.0	45.5	10,300	165.0	46.2	9,200	165.0	48.5	8,800
165.0	40.6	9,900	165.0	43.6	9,700	170.0	44.4	8,500	170.0	46.8	7,900
170.0	38.5	9,200 *	170.0	41.7	9,000 *	175.0	42.6	7,900 *	175.0	45.2	7,200
175.0	36.2	8,100 *	175.0	39.7	8,100 *	180.0	40.7	7,000 *	180.0	43.4	6,800 *
180.0	33.8	7,200 *	180.0	37.6	7,200 *	185.0	38.7	6,300 *	185.0	41.7	6,100 *
185.0	31.2	6,300 *	185.0	35.3	6,600 *	190.0	36.7	5,700 *	190.0	39.8	5,200 *
			190.0	33.0	5,700 *	195.0	34.5	4,800 *	195.0	37.9	4,600 *
			195.0	30.5	4,800 *	200.0	32.2	4,100 *			
Reeves 3			Reeves 2			Reeves 2			Reeves 2		
250' Boom											
Load Radius (ft)	Boom Angle (deg.)	360° Rated Load (lbs)									
50.0	79.9	50,200 *									
55.0	78.7	47,300 *									
60.0	77.6	44,500 *									
65.0	76.4	42,100 *									
70.0	75.2	39,600 *									
75.0	74.0	36,100 *									
80.0	72.8	33,000 *									
85.0	71.6	30,200 *									
90.0	70.4	27,900 *									
95.0	69.2	25,700 *									
100.0	67.9	23,500									
105.0	66.7	21,800									
110.0	65.4	20,000									
115.0	64.2	18,500									
120.0	62.9	17,100									
125.0	61.6	15,800									
130.0	60.3	14,700									
135.0	58.9	13,600									
140.0	57.6	12,500									
145.0	56.2	11,600									
150.0	54.8	10,800									
155.0	53.4	9,900									
160.0	51.9	9,000									
165.0	50.5	8,300									
170.0	49.0	7,400									
175.0	47.4	6,800									
180.0	45.8	6,300 *									
185.0	44.2	5,700 *									
190.0	42.5	5,000 *									
195.0	40.8	4,400 *									
Reeves 2											

Note: Designed and rated to comply with ANSI Code B30.5.

Capacities based on factors other than machine stability such as structural competence are shown by asterisk * in the charts. Refer to notes P10.

LIFTING CAPACITY



Fixed Jib Lifting Capacity

Unit: lbs

Counterweight: 121,300 lbs, Carbody weight: 23,810 lbs

90' Boom																Load Radius (ft)	
Load Radius (ft)	40 ft Jib				60 ft Jib				80 ft Jib				100 ft Jib				
	Offset Angle (deg.)		Offset Angle (deg.)		Offset Angle (deg.)		Offset Angle (deg.)		Offset Angle (deg.)		Offset Angle (deg.)		Offset Angle (deg.)				
	10	30	10	30	10	30	10	30	10	30	10	30	10	30			
Boom Angle (deg.)	Rated Load (lbs)	Boom Angle (deg.)	Rated Load (lbs)	Boom Angle (deg.)	Rated Load (lbs)	Boom Angle (deg.)	Rated Load (lbs)	Boom Angle (deg.)	Rated Load (lbs)	Boom Angle (deg.)	Rated Load (lbs)	Boom Angle (deg.)	Rated Load (lbs)	Boom Angle (deg.)	Rated Load (lbs)		
34	79.5	59,000*														34	
36	78.6	59,000*														36	
38	77.7	59,000*														38	
40	76.8	59,000*			79.6	42,500*										40	
42	75.8	58,800*			78.8	42,200*										42	
44	74.9	58,200*			78.0	42,000*										44	
46	74.0	57,600*	79.5	40,100*	77.2	41,700*			79.7	22,000*						46	
48	73.1	57,000*	78.5	39,200*	76.5	41,500*			79.0	21,800*						48	
50	72.2	56,400*	77.5	38,200*	75.7	41,300*			78.3	21,600*			79.6	13,200*		50	
55	69.8	55,100*	75.1	36,100*	73.7	40,300*			76.6	21,300*			78.1	13,000*		55	
60	67.4	53,900*	72.7	34,300*	71.6	39,300*	78.8	27,000*	74.8	20,900*			76.5	12,700*		60	
65	65.0	51,000*	70.2	32,600*	69.6	38,400*	76.6	25,500*	73.0	20,600*			75.0	12,400*		65	
70	62.5	47,200	67.6	31,200*	67.5	36,100*	74.5	24,200*	71.2	20,000*	79.7	16,700*	73.4	12,100*		70	
75	59.9	43,100	64.9	29,800*	65.4	33,600*	72.3	23,100*	69.4	19,400*	77.8	16,300*	71.8	11,600*		75	
80	57.3	39,600	62.2	28,700*	63.2	31,500*	70.0	22,000*	67.5	18,700*	75.9	15,900*	70.1	11,200*	79.8	9,100*	
85	54.5	36,600	59.4	27,600*	61.0	29,600*	67.7	21,100*	65.7	18,100*	74.0	15,500*	68.5	10,800*	78.1	8,900*	
90	51.7	33,900	56.5	26,700*	58.7	27,900*	65.4	20,200*	63.7	17,600*	72.0	15,200*	66.8	10,400*	76.4	8,600*	
95	48.8	31,600	53.4	25,900*	56.3	26,400*	62.9	19,400*	61.8	17,100*	69.9	14,900*	65.1	10,000*	74.6	8,400*	
100	45.6	29,500	50.1	25,100*	53.9	25,100*	60.4	18,700*	59.8	16,600*	67.9	14,500*	63.4	9,700*	72.8	8,200*	
105	42.3	27,700	46.6	24,500*	51.4	23,900*	57.8	18,100*	57.7	16,200*	65.7	13,900*	61.7	9,400*	71.0	8,000*	
110	38.8	26,000	42.9	23,900*	48.8	22,800*	55.1	17,500*	55.6	15,800*	63.5	13,500*	59.9	9,100*	69.2	7,800*	
115	34.9	24,400*			46.1	21,800*	52.2	17,000*	53.5	15,400*	61.3	13,000*	58.1	8,800*	67.3	7,600*	
120	30.6	21,900*			43.2	20,900*	49.2	16,600*	51.2	15,000*	58.9	12,600*	56.2	8,500*	65.4	7,400*	
125					40.2	20,100*	45.9	16,100*	48.9	14,700*	56.5	12,200*	54.3	8,300*	63.4	7,300*	
130					36.9	19,400*	42.3	15,800*	46.5	14,400*	53.9	11,900*	52.3	8,100*	61.3	7,100*	
135					33.3	18,700*			43.9	14,100*	51.2	11,500*	50.3	7,900*	59.2	7,000*	
140									41.3	13,900*	48.3	11,200*	48.2	7,700*	57.0	6,900*	
145									38.4	13,600*	45.2	11,000*	46.0	7,500*	54.7	6,800*	
150									35.4	13,400*	41.9	10,800*	43.8	7,300*	52.3	6,700*	
155									32.0	13,200*			41.4	7,100*	49.8	6,600*	
160													38.9	7,000*	47.1	6,500*	
165													36.2	6,900*	44.2	6,500*	
170													33.3	6,700*	41.0	6,400*	
175													30.2	6,600*		175	
Reeves	2		2		2		1		1		1		1		1	Reeves	

100' Boom																Load Radius (ft)	
Load Radius (ft)	40 ft Jib				60 ft Jib				80 ft Jib				100 ft Jib				
	Offset Angle (deg.)		Offset Angle (deg.)		Offset Angle (deg.)		Offset Angle (deg.)		Offset Angle (deg.)		Offset Angle (deg.)		Offset Angle (deg.)				
	10	30	10	30	10	30	10	30	10	30	10	30	10	30			
Boom Angle (deg.)	Rated Load (lbs)	Boom Angle (deg.)	Rated Load (lbs)	Boom Angle (deg.)	Rated Load (lbs)	Boom Angle (deg.)	Rated Load (lbs)	Boom Angle (deg.)	Rated Load (lbs)	Boom Angle (deg.)	Rated Load (lbs)	Boom Angle (deg.)	Rated Load (lbs)	Boom Angle (deg.)	Rated Load (lbs)		
36	79.4	59,000*														36	
38	78.6	59,000*														38	
40	77.7	59,000*														40	
42	76.9	59,000*			79.5	42,400*										42	
44	76.0	58,900*			78.8	42,200*										44	
46	75.2	58,300*			78.1	41,900*										46	
48	74.3	57,700*	79.4	40,000*	77.3	41,700*			79.6	21,900*						48	
50	73.5	57,200*	78.5	39,100*	76.6	41,500*			79.0	21,800*						50	
55	71.3	55,900*	76.3	37,100*	74.7	40,800*			77.3	21,400*			78.7	13,100*		55	
60	69.1	54,700*	74.0	35,200*	72.8	39,900*	79.5	27,600*	75.7	21,100*			77.2	12,800*		60	
65	66.9	51,600	71.7	33,600*	70.9	39,000*	77.6	26,100*	74.0	20,800*			75.7	12,500*		65	
70	64.6	46,900	69.4	32,100*	69.0	38,000*	75.6	24,900*	72.3	20,500*			74.2	12,300*		70	
75	62.3	42,800	67.0	30,800*	67.0	35,500*	73.5	23,700*	70.6	19,800*	78.6	16,400*	72.7	11,900*		75	
80	59.9	39,300	64.6	29,600*	65.0	33,200*	71.5	22,700*	68.9	19,200*	76.8	16,000*	71.2	11,500*		80	
85	57.5	36,300	62.0	28,600*	63.0	31,300*	69.4	21,700*	67.1	18,600*	75.0	15,700*	69.6	11,000*	78.7	8,900*	
90	55.0	33,600	59.4	27,600*	60.9	29,500*	67.2	20,800*	65.3	18,000*	73.1	15,400*	68.1	10,700*	77.1	8,700*	
95	52.4	31,300	56.7	26,800*	58.8	27,900*	65.0	20,100*	63.5	17,500*	71.2	15,100*	66.5	10,300*	75.5	8,500*	
100	49.6	29,200	53.9	26,000*	56.6	26,600*	62.7	19,400*	61.7	17,100*	69.3	14,800*	64.9	10,000*	73.8	8,300*	
105	46.8	27,300	51.0	25,300*	54.3	25,300*	60.4	18,700*	59.8	16,600*	67.4	14,300*	63.2	9,700*	72.1	8,100*	
110	43.8	25,600	47.9	24,700*	52.0	24,100*	58.0	18,100*	57.9	16,200*	65.4	13,800*	61.6	9,300*	70.4	7,900*	
115	40.7	24,100	44.5	24,100*	49.6	23,100*	55.5	17,600*	55.9	15,800*	63.3	13,400*	59.9	9,100*	68.7	7,700*	
120	37.3	22,700	40.9	23,000	47.1	22,100*	52.8	17,100*	53.9	15,400*	61.2	13,000*	58.2	8,800*	66.9	7,500*	
125	33.5	21,100*			44.5	21,300*	50.1	16,700*	51.8	15,100*	59.0	12,600*	56.4	8,500*	65.1	7,400*	
130					41.7	20,500*	47.1	16,300*	49.6	14,800*	56.7	12,200*	54.6	8,300*	63.2	7,200*	
135					38.8	19,700	43.9	15,900*	47.4	14,500*	54.3	11,900*	52.7	8,100*	61.3	7,100*	
140					35.6	18,600*	40.5	15,600*	45.0	14,200*	51.9	11,600*	50.8	7,900*	59.3	7,000*	
145					32.1	17,000*			42.6	14,000*	49.2	11,300*	48.9	7,700*	57.2	6,900*	
150									40.0	13,700*	46.4	11,100*	46.8	7,500*	55.1	6,800*	
155									37.2	13,500*	43.4	10,800*	44.7	7,400*	52.8	6,700*	
160									34.2	13,300*	40.2	10,600*	42.5	7,200*	50.5	6,600*	
165													40.2	7,000*	48.0	6,500*	
170													37.8	6,900*	45.4	6,500*	
175													35.2	6,800*	42.6	6,400*	
180													32.4	6,700*		180	
Reeves	2		2		2		1		1		1		1		1	Reeves	

Note: Designed and rated to comply with ANSI Code B30.5.

Capacities based on factors other than machine stability such as structural competence are shown by asterisk * in the charts.

Refer to notes P10.



Fixed Jib Lifting Capacity

Unit: lbs

Counterweight: 121,300 lbs, Carbody weight: 23,810 lbs

110' Boom

Load Radius (ft)	40 ft Jib				60 ft Jib				80 ft Jib				100 ft Jib				Load Radius (ft)
	Offset Angle (deg.)		Offset Angle (deg.)		Offset Angle (deg.)		Offset Angle (deg.)		Offset Angle (deg.)		Offset Angle (deg.)		Offset Angle (deg.)				
	10	30	10	30	10	30	10	30	10	30	10	30	10	30			
	Boom Angle (deg.)	Rated Load (lbs)	Boom Angle (deg.)	Rated Load (lbs)	Boom Angle (deg.)	Rated Load (lbs)	Boom Angle (deg.)	Rated Load (lbs)	Boom Angle (deg.)	Rated Load (lbs)	Boom Angle (deg.)	Rated Load (lbs)	Boom Angle (deg.)	Rated Load (lbs)	Boom Angle (deg.)	Rated Load (lbs)	
38	79.3	59,000*														38	
40	78.6	59,000*														40	
42	77.8	59,000*														42	
44	77.0	59,000*			79.5	42,300*										44	
46	76.2	58,900*			78.8	42,100*										46	
48	75.4	58,400*			78.1	41,900*										48	
50	74.6	57,800*	79.3	39,900*	77.4	41,700*			79.6	21,900*						50	
55	72.6	56,600*	77.3	37,900*	75.6	41,200*			78.0	21,600*			79.3	13,100*		55	
60	70.6	55,400*	75.2	36,100*	73.9	40,300*			76.5	21,200*			77.8	12,900*		60	
65	68.5	51,300	73.1	34,500*	72.1	39,500*	78.4	26,700*	74.9	20,900*			76.4	12,600*		65	
70	66.4	46,500	70.9	33,000*	70.3	38,600*	76.5	25,400*	73.3	20,600*			75.0	12,400*		70	
75	64.3	42,500	68.8	31,700*	68.5	37,300*	74.6	24,300*	71.7	20,200*	79.2	16,600*	73.6	12,200*		75	
80	62.1	38,900	66.5	30,500*	66.6	35,000*	72.7	23,300*	70.1	19,600*	77.6	16,200*	72.1	11,700*		80	
85	59.9	35,900	64.2	29,500*	64.7	32,900*	70.8	22,300*	68.4	19,000*	75.9	15,800*	70.7	11,300*	79.3	9,000*	
90	57.6	33,300	61.9	28,500*	62.8	31,100*	68.8	21,400*	66.8	18,400*	74.1	15,500*	69.2	10,900*	77.8	8,800*	
95	55.3	30,900	59.5	27,600*	60.8	29,400*	66.8	20,700*	65.1	17,900*	72.4	15,200*	67.7	10,600*	76.3	8,500*	
100	52.9	28,800	57.0	26,800*	58.8	28,000*	64.7	19,900*	63.3	17,500*	70.6	14,900*	66.2	10,200*	74.7	8,300*	
105	50.4	27,000	54.4	26,100*	56.8	26,600*	62.6	19,300*	61.6	17,000*	68.8	14,700*	64.6	9,900*	73.1	8,200*	
110	47.8	25,300	51.7	25,400*	54.7	25,400*	60.4	18,700*	59.8	16,800*	66.9	14,200*	63.1	9,600*	71.5	8,000*	
115	45.1	23,800	48.9	24,100	52.5	24,200	58.1	18,100*	58.0	16,200*	65.0	13,800*	61.5	9,300*	69.9	7,800*	
120	42.2	22,400	45.9	22,700	50.3	22,800	55.8	17,600*	56.1	15,800*	63.1	13,300*	59.9	9,100*	68.2	7,600*	
125	39.2	21,100	42.6	21,400	48.0	21,500	53.3	17,200*	54.2	15,500*	61.1	12,900*	58.3	8,800*	66.5	7,500*	
130	35.9	20,000			45.6	20,400	50.8	16,700*	52.2	15,200*	59.1	12,600*	56.6	8,600*	64.8	7,300*	
135	32.3	18,200*			43.0	19,300	48.1	16,400*	50.2	14,900*	56.9	12,200*	54.9	8,300*	63.0	7,200*	
140					40.4	18,300	45.3	16,000*	48.1	14,600*	54.7	11,900*	53.1	8,100*	61.2	7,100*	
145					37.5	17,400	42.2	15,700*	45.9	14,300*	52.4	11,600*	51.3	7,900*	59.3	7,000*	
150					34.4	16,200*			43.7	14,100*	50.0	11,400*	49.5	7,800*	57.4	6,900*	
155					31.1	14,800*			41.3	13,800*	47.5	11,100*	47.6	7,600*	55.4	6,800*	
160									38.8	13,600*	44.7	10,900*	45.6	7,400*	53.3	6,700*	
165									36.1	13,400*	41.8	10,700*	43.5	7,200*	51.1	6,600*	
170									33.2	13,300*			41.4	7,100*	48.8	6,500*	
175									30.0	12,500*			39.2	7,000*	46.4	6,500*	
180													36.8	6,900*	43.8	6,400*	
185													34.2	6,700*	41.1	6,400*	
190													31.5	6,700*		6,400*	
Reeves	2		2		2		1		1		1		1		1	Reeves	

120' Boom

Load Radius (ft)	40 ft Jib				60 ft Jib				80 ft Jib				100 ft Jib				Load Radius (ft)
	Offset Angle (deg.)		Offset Angle (deg.)		Offset Angle (deg.)		Offset Angle (deg.)		Offset Angle (deg.)		Offset Angle (deg.)		Offset Angle (deg.)				
	10	30	10	30	10	30	10	30	10	30	10	30	10	30			
	Boom Angle (deg.)	Rated Load (lbs)	Boom Angle (deg.)	Rated Load (lbs)	Boom Angle (deg.)	Rated Load (lbs)	Boom Angle (deg.)	Rated Load (lbs)	Boom Angle (deg.)	Rated Load (lbs)	Boom Angle (deg.)	Rated Load (lbs)	Boom Angle (deg.)	Rated Load (lbs)	Boom Angle (deg.)	Rated Load (lbs)	
38	80.0	59,000*														38	
40	79.3	59,000*														40	
42	78.5	59,000*														42	
44	77.8	59,000*														44	
46	77.1	59,000*			79.4	42,300*										46	
48	76.3	59,000*			78.8	42,100*										48	
50	75.6	58,500*	80.0	40,600*	78.1	41,900*										50	
55	73.7	57,200*	76.2	38,700*	76.5	41,400*			78.6	21,700*			79.7	13,200*		55	
60	71.8	56,100*	72.2	36,900*	74.8	40,700*			77.2	21,400*			78.4	13,000*		60	
65	69.9	50,900	74.2	35,300*	73.1	39,900*	79.1	27,200*	75.7	21,000*			77.1	12,700*		65	
70	68.0	46,100	72.2	33,900*	71.4	39,100*	77.3	25,900*	74.2	20,800*			75.7	12,500*		70	
75	66.0	42,000	70.2	32,600*	69.7	38,400*	75.6	24,800*	72.7	20,500*	79.8	16,700*	74.4	12,300*		75	
80	64.0	38,500	68.2	31,400*	68.0	36,600*	73.8	23,800*	71.1	19,900*	78.2	16,300*	73.0	12,000*		80	
85	62.0	35,400	66.1	30,300*	66.2	34,500*	72.0	22,900*	69.6	19,400*	76.6	16,000*	71.6	11,500*	79.9	9,100*	
90	59.9	32,800	64.0	29,300*	64.5	32,600*	70.1	22,000*	68.0	18,800*	75.0	15,700*	70.2	11,100*	78.4	8,900*	
95	57.8	30,400	61.8	28,400*	62.6	30,900*	68.3	21,200*	66.4	18,300*	73.4	15,400*	68.8	10,800*	77.0	8,600*	
100	55.6	28,300	59.5	27,600*	60.8	28,800	66.3	20,500*	64.8	17,900*	71.7	15,100*	67.3	10,500*	75.5	8,400*	
105	53.4	26,500	57.2	26,800*	58.9	26,900	64.4	19,800*	63.2	17,400*	70.0	14,900*	65.9	10,100*	74.0	8,200*	
110	51.1	24,800	54.8	25,300	57.0	25,200	62.4	19,200*	61.5	17,000*	68.3	14,600*	64.4	9,800*	72.5	8,100*	
115	48.7	23,300	52.3	23,700	55.0	23,700	60.3	18,700*	59.8	16,600*	66.6	14,100*	62.9	9,600*	71.0	7,900*	
120	46.2	21,900	49.7	22,300	53.0	22,300	58.2	18,200*	58.1	16,200*	64.8	13,700*	61.4	9,300*	69.4	7,700*	
125	43.5	20,600	47.0	21,000	50.9	21,000	56.1	17,700*	56.3	15,900*	62.9	13,300*	59.9	9,000*	67.8	7,600*	
130	40.8	19,500	44.1	19,800	48.7	19,900	53.8	17,200*	54.5	15,500*	61.0	12,900*	58.3	8,800*	66.2	7,400*	
135	37.8	18,400	41.0	18,700	46.5	18,800	51.4	16,800*	52.7	15,200*	59.1	12,600*	56.7	8,600*	64.5	7,300*	
140	34.7	17,100*			44.1	17,800	49.0	16,500*	50.8	14,900*	57.1	12,300*	55.1	8,300*	62.8	7,200*	
145		15,500*			41.7	16,900	46.4	16,200*	48.8	14,700*	55.0	11,900*	53.5	8,200*	61.1	7,100*	
150					39.1	16,100	43.6	15,800*	46.8	14,400*	52.9	11,700*	51.8	8,000*	59.3	7,000*	
155					36.4	15,100*	40.6	15,600*	44.6	14,100*	50.7	11,400*	50.0	7,800*	57.5	6,900*	
160					33.4	13,800*			42.4	13,900*	48.3	11,200*	48.2	7,600*	55.6	6,800*	
165					30.1	12,600*			40.1	13,700*	45.8	11,000*	46.4	7,500*	53.7	6,700*	
170									37.7	13,500*	43.2	10,800*	44.4	7,300*	51.6	6,600*	
175									35.1	12,700*	40.3	10,600*	42.4	7,200*	49.5	6,500*	
180									32.3	11,700*			40.3	7,000*	47.3	6,500*	
185													38.2	6,900*	44.9	6,400*	
190													35.8	6,800*	42.4	6,400*	
195													33.4	6,700*		6,400*	
200													30.7	6,600*		6,400*	
Reeves	2		2		2		1		1		1		1		1	Reeves	

Note: Designed and rated to comply with ANSI Code B30.5.

Capacities based on factors other than machine stability such as structural competence are shown by asterisk * in the charts.

Refer to notes P10.

LIFTING CAPACITY



Fixed Jib Lifting Capacity

Unit: lbs

Counterweight: 121,300 lbs, Carbody weight: 23,810 lbs

130' Boom

Load Radius (ft)	40 ft Jib				60 ft Jib				80 ft Jib				100 ft Jib				Load Radius (ft)
	Offset Angle (deg.)		Offset Angle (deg.)		Offset Angle (deg.)		Offset Angle (deg.)		Offset Angle (deg.)		Offset Angle (deg.)		Offset Angle (deg.)				
	10	30	10	30	10	30	10	30	10	30	10	30	10	30			
	Boom Angle (deg.)	Rated Load (lbs)	Boom Angle (deg.)	Rated Load (lbs)	Boom Angle (deg.)	Rated Load (lbs)	Boom Angle (deg.)	Rated Load (lbs)	Boom Angle (deg.)	Rated Load (lbs)	Boom Angle (deg.)	Rated Load (lbs)	Boom Angle (deg.)	Rated Load (lbs)			
40	79.9	59,000*														40	
42	79.2	59,000*														42	
44	78.5	59,000*														44	
46	77.9	59,000*			80.0	42,400*										46	
48	77.2	59,000*			79.4	42,200*										48	
50	76.5	59,000*			77.2	41,600*										50	
55	74.7	57,800*	78.8	39,400*					79.2	21,800*						55	
60	73.0	56,400	77.0	37,600*	75.6	41,100*			77.8	21,500*			78.9	13,000*		60	
65	71.2	50,600	75.2	36,100*	74.1	40,300*			76.4	21,200*			77.6	12,800*		65	
70	69.4	45,800	73.4	34,600*	72.5	39,500*	78.0	26,400*	74.9	20,900*			76.4	12,600*		70	
75	67.5	41,700	71.5	33,300*	70.9	38,800*	76.4	25,300*	73.5	20,600*			75.1	12,400*		75	
80	65.7	38,200	69.6	32,200*	69.2	38,100*	74.7	24,300*	72.1	20,300*	78.9	16,400*	73.7	12,200*		80	
85	63.8	35,100	67.7	31,100*	67.6	35,700	73.0	23,400*	70.6	19,700*			72.4	11,800*		85	
90	61.9	32,500	65.7	30,100*	65.9	33,000	71.3	22,500*	69.1	19,200*	75.8	15,800*	71.1	11,400*	79.0	8,900*	90
95	59.9	30,100	63.7	29,200*	64.2	30,600	69.6	21,800*	67.6	18,700*	74.3	15,500*	69.8	11,000*	77.6	8,700*	95
100	57.9	28,000	61.7	28,300*	62.5	28,500	67.8	21,000*	66.1	18,200*	72.7	15,200*	68.4	10,700*	76.2	8,500*	100
105	55.9	26,100	59.6	26,800	60.8	26,600	66.0	20,400*	64.6	17,800*	71.1	15,000*	67.0	10,400*	74.8	8,300*	105
110	53.8	24,500	57.4	25,000	59.0	24,900	64.1	19,700*	63.0	17,300*	69.5	14,800*	65.6	10,100*	73.4	8,200*	110
115	51.6	22,900	55.2	23,400	57.1	23,400	62.3	19,200*	61.4	16,900*	67.9	14,400*	64.2	9,800*	71.9	8,000*	115
120	49.4	21,600	52.8	22,000	55.3	22,000	60.3	18,600*	59.8	16,600*	66.2	14,000*	62.8	9,500*	70.4	7,800*	120
125	47.1	20,300	50.4	20,700	53.4	20,700	58.3	18,200*	58.2	16,200*	64.5	13,600*	61.4	9,300*	68.9	7,700*	125
130	44.7	19,100	47.9	19,500	51.4	19,500	56.3	17,700*	56.5	15,900*	62.8	13,200*	59.9	9,000*	67.4	7,500*	130
135	42.1	18,100	45.3	18,400	49.4	18,500	54.2	17,300*	54.8	15,600*	61.0	12,900*	58.4	8,800*	65.9	7,400*	135
140	39.4	17,100	42.5	17,300	47.3	17,500	52.0	16,900*	53.0	15,300*	59.2	12,600*	56.9	8,600*	64.3	7,300*	140
145	36.6	16,000*			45.1	16,600	49.7	16,600*	51.2	15,000*	57.3	12,300*	55.3	8,400*	62.7	7,200*	145
150	33.5	14,600*			42.8	15,700	47.3	16,200*	49.4	14,700*	55.3	12,000*	53.8	8,200*	61.1	7,000*	150
155	30.2	13,200*			40.5	14,900	44.8	15,500	47.5	14,500*	53.3	11,700*	52.1	8,000*	59.4	6,900*	155
160					38.0	14,100*	42.1	14,700	45.5	14,200*	51.2	11,500*	50.5	7,800*	57.6	6,900*	160
165					35.3	13,000*			43.4	13,900	49.1	11,200*	48.8	7,700*	55.9	6,800*	165
170					32.4	11,900*			41.3	13,300	46.8	11,000*	47.0	7,500*	54.0	6,700*	170
175									39.0	12,700	44.3	10,900*	45.2	7,400*	52.1	6,600*	175
180									36.7	11,900*	41.8	10,700*	43.3	7,200*	50.1	6,500*	180
185									34.1	11,000*			41.4	7,100*	48.1	6,500*	185
190									31.4	10,000*			39.4	7,000*	45.9	6,400*	190
195													37.2	6,900*	43.6	6,400*	195
200													35.0	6,800*	41.1	6,400*	200
205													32.5	6,700*			205
Reeves	2		2		2		1		1		1		1		1		Reeves

140' Boom

Load Radius (ft)	40 ft Jib				60 ft Jib				80 ft Jib				100 ft Jib				Load Radius (ft)
	Offset Angle (deg.)		Offset Angle (deg.)		Offset Angle (deg.)		Offset Angle (deg.)		Offset Angle (deg.)		Offset Angle (deg.)		Offset Angle (deg.)				
	10	30	10	30	10	30	10	30	10	30	10	30	10	30			
	Boom Angle (deg.)	Rated Load (lbs)	Boom Angle (deg.)	Rated Load (lbs)	Boom Angle (deg.)	Rated Load (lbs)	Boom Angle (deg.)	Rated Load (lbs)	Boom Angle (deg.)	Rated Load (lbs)	Boom Angle (deg.)	Rated Load (lbs)	Boom Angle (deg.)	Rated Load (lbs)			
42	79.8	59,000*														42	
44	79.2	59,000*														44	
46	78.5	59,000*														46	
48	77.9	59,000*			79.9	42,400*										48	
50	77.2	59,000*			79.3	42,200*										50	
55	75.6	58,400*	79.5	40,000*	77.8	41,700*			79.7	21,900*						55	
60	73.9	56,100	77.8	38,300*	76.4	41,300*			78.4	21,600*			79.4	13,100*		60	
65	72.3	50,300	76.1	36,700*	74.9	40,700*			77.0	21,300*			78.2	12,900*		65	
70	70.6	45,500	74.4	35,400*	73.4	39,900*	78.7	26,900*	75.7	21,000*			76.9	12,700*		70	
75	68.9	41,400	72.6	34,100*	71.9	39,200*	77.1	25,800*	74.3	20,800*			75.7	12,500*		75	
80	67.1	37,800	70.9	32,900*	70.3	38,400	75.6	24,800*	72.9	20,500*			74.4	12,300*		80	
85	65.4	34,800	69.1	31,800*	68.8	35,300	74.0	23,900*	71.5	20,100*	78.0	16,200*	73.2	12,000*		85	
90	63.6	32,100	67.2	30,800*	67.2	32,600	72.4	23,000*	70.1	19,500*			71.9	11,600*	79.5	9,000*	90
95	61.8	29,800	65.4	29,900*	65.6	30,300	70.7	22,200*	68.7	19,000*	75.1	15,600*	70.6	11,300*	78.2	8,800*	95
100	59.9	27,700	63.5	28,400	64.0	28,200	69.1	21,500*	67.3	18,600*	73.6	15,400*	69.4	10,900*	76.8	8,600*	100
105	58.0	25,800	61.6	26,500	62.4	26,300	67.4	20,800*	65.8	18,100*	72.1	15,100*	68.1	10,600*	75.5	8,400*	105
110	56.1	24,100	59.6	24,700	60.7	24,600	65.7	20,200*	64.4	17,700*	70.6	14,900*	66.7	10,300*	74.1	8,200*	110
115	54.1	22,600	57.5	23,100	59.0	23,000	63.9	19,700*	62.9	17,300*	69.1	14,700*	65.4	10,000*	72.8	8,100*	115
120	52.1	21,200	55.5	21,700	57.3	21,600	62.1	19,100*	61.4	16,900*	67.5	14,300*	64.1	9,700*	71.4	7,900*	120
125	50.0	19,900	53.3	20,400	55.5	20,300	60.3	18,600*	59.8	16,600*	65.9	13,900*	62.7	9,500*	70.0	7,800*	125
130	47.9	18,800	51.1	19,200	53.7	19,200	58.4	18,200*	58.3	16,200*	64.3	13,500*	61.3	9,200*	68.5	7,600*	130
135	45.6	17,700	48.7	18,000	51.9	18,100	56.5	17,700*	56.7	15,900*	62.6	13,200*	59.9	9,000*	67.1	7,500*	135
140	43.3	16,700	46.3	17,000	50.0	17,100	54.5	17,300*	55.0	15,600*	60.9	12,800*	58.5	8,800*	65.6	7,400*	140
145	40.8	15,800	43.7	16,100	48.0	16,200	52.5	16,900	53.4	15,300*	59.2	12,500*	57.0	8,600*	64.1	7,200*	145
150	38.3	14,900*			46.0	15,300	50.3	16,000	51.7	15,000*	57.4	12,300*	55.5	8,400*	62.6	7,100*	150
155	35.5	13,600*			43.9	14,600	48.1	15,000	49.9	14,800*	55.6	12,000*	54.0	8,200*	61.0	7,000*	155
160					41.7	13,800	45.8	14,400	48.1	14,300	53.7	11,700*	52.5	8,000*	59.4	6,900*	160
165					39.3	13,000*	43.3	13,700	46.3	13,600	51.7	11,500*	50.9	7,900*	57.8	6,900*	165
170					36.9	12,100*			44.3	13,000	49.7	11,300*	49.3	7,700*	56.1	6,800*	170
175					34.3	11,100*			42.3	12,300	47.6	11,100*	47.6	7,600*	54.3	6,700*	175
180					31.5	10,100*			40.2	11,800	45.3	10,900*	45.9	7,400*	52.5	6,600*	180
185									38.1	11,000*	43.0	10,800*	44.2	7,300*	50.7	6,500*	185
190									35.7	10,200*			42.3	7,100*	48.7	6,500*	190
195									33.3	9,300*			40.4	7,000*	46.7	6,400*	195
200									30.6	8,500*			38.4	6,900*	44.6	6,400*	200
205													36.4	6,800*	42.3	6,400*	205
210													34.1	6,700*			210
215													31.8	6,600*			215
Reeves	2		2		2		1		1		1		1		1		Reeves

LIFTING CAPACITY

Fixed Jib Lifting Capacity

Unit: lbs

Counterweight: 121,300 lbs, Carbody weight: 23,810 lbs

170' Boom																	
Load Radius (ft)	40 ft Jib				60 ft Jib				80 ft Jib				100 ft Jib				Load Radius (ft)
	Offset Angle (deg.)		Offset Angle (deg.)		Offset Angle (deg.)		Offset Angle (deg.)		Offset Angle (deg.)		Offset Angle (deg.)		Offset Angle (deg.)				
	10	30	10	30	10	30	10	30	10	30	10	30	10	30			
	Boom Angle (deg.)	Rated Load (lbs)	Boom Angle (deg.)	Rated Load (lbs)	Boom Angle (deg.)	Rated Load (lbs)	Boom Angle (deg.)	Rated Load (lbs)	Boom Angle (deg.)	Rated Load (lbs)	Boom Angle (deg.)	Rated Load (lbs)	Boom Angle (deg.)	Rated Load (lbs)	Boom Angle (deg.)	Rated Load (lbs)	
48	79.6	59,000*														48	
50	79.1	59,000*			79.5	42,100*										50	
55	77.7	59,000*			78.2	41,700*			79.8	21,800*						55	
60	76.3	55,100	79.6	40,000*	78.2	41,700*			77.4	21,300*			79.5	13,100*		60	
65	74.9	49,300	78.2	38,600*	76.9	41,400*			76.2	21,600*			78.4	12,900*		65	
70	73.4	44,400	76.7	37,200*	75.6	40,900*			75.0	21,100*			77.3	12,700*		70	
75	72.0	40,300	75.3	36,000*	74.3	40,200*			74.2	20,800*			76.2	12,500*		75	
80	70.6	36,800	73.8	34,800*	73.0	37,400	78.9	27,000*	73.8	20,600*	79.5	16,500*	75.1	12,300*		80	
85	69.1	33,700	72.3	33,700*	71.7	34,300	76.2	25,100*	73.8	20,400*	77.0	16,000*	74.0	12,200*		85	
90	67.6	31,000	70.8	32,100	70.4	31,600	74.9	24,300*	72.6	20,400*	78.3	16,200*	72.9	11,900*	8.900*	90	
95	66.1	28,700	69.3	29,700	69.0	29,200	73.5	23,500*	71.4	20,000*	77.0	16,000*	72.9	11,900*	8,800*	95	
100	64.6	26,500	67.7	27,500	67.7	27,100	72.1	22,800*	70.2	19,500*	75.8	15,700*	71.8	11,500*	78.4	100	
105	63.1	24,700	66.2	25,500	66.3	25,200	70.7	22,200*	68.9	19,100*	74.5	15,500*	70.6	11,200*	77.3	105	
110	61.5	23,000	64.6	23,800	64.9	23,500	69.3	21,600*	67.7	18,600*	73.2	15,300*	69.5	10,900*	76.1	110	
115	59.9	21,400	63.0	22,200	63.5	21,900	67.8	21,000*	66.4	18,200*	71.9	15,100*	68.3	10,600*	74.9	115	
120	58.3	20,000	61.3	20,700	62.1	20,500	66.4	20,400*	65.1	17,900*	70.6	14,900*	67.2	10,300*	73.7	120	
125	56.7	18,800	59.6	19,400	60.6	19,200	64.9	19,900*	63.8	17,500*	69.3	14,700*	66.0	10,100*	72.5	125	
130	55.0	17,600	57.9	18,200	59.2	18,000	63.4	19,200*	62.5	17,200*	67.9	14,400*	64.8	9,800*	71.3	130	
135	53.3	16,500	56.2	17,000	57.7	17,000	61.8	18,100	61.2	16,800*	66.5	14,000*	63.6	9,600*	70.0	135	
140	51.6	15,500	54.4	16,000	56.1	16,000	60.3	17,000	59.9	16,500*	65.1	13,700*	62.4	9,400*	68.8	140	
145	49.8	14,600	52.5	15,100	54.6	15,000	58.7	16,000	58.5	15,700	63.7	13,400*	61.2	9,200*	67.5	145	
150	47.9	13,800	50.6	14,200	53.0	14,200	57.0	15,100	57.1	14,800	62.3	13,100*	59.9	9,000*	66.2	150	
155	46.0	13,000	48.7	13,300	51.4	13,400	55.4	14,300	55.7	14,000	60.8	12,800*	58.7	8,800*	64.9	155	
160	44.0	12,200*	46.6	12,600	49.7	12,600	53.6	13,500	54.2	13,200	59.3	12,500*	57.4	8,600*	63.6	160	
165	42.0	11,200*	44.5	11,800*	48.0	11,900	51.9	12,700	52.8	12,500	57.8	12,300*	56.1	8,400*	62.3	165	
170	39.8	10,300*	42.3	10,900*	46.3	11,300*	50.0	12,000	51.3	11,900	56.2	12,000*	54.7	8,200*	60.9	170	
175	37.6	9,400*			44.5	10,500*	48.1	11,400	49.7	11,200	54.6	11,800*	53.4	8,100*	59.5	175	
180	35.2	8,500*			42.6	9,700*	46.2	10,800	48.1	10,700	53.0	11,300	52.0	7,900*	58.1	180	
185	32.7	7,700*			40.6	8,900*	44.1	10,200	46.5	10,100	51.3	10,700	50.6	7,800*	56.6	185	
190	30.0	6,800*			38.6	8,200*	42.0	9,300*	44.8	9,500*	49.5	10,200	49.2	7,600*	55.1	190	
195					36.5	7,500*			43.1	8,800*	47.7	9,600*	47.7	7,500*	53.6	195	
200					34.2	6,800*			41.3	8,200*	45.8	9,100*	46.2	7,400*	52.0	200	
205					31.8	6,000*			39.5	7,500*	43.8	8,400*	44.7	7,300*	50.3	205	
210									37.5	6,900*	41.7	7,700*	43.1	7,200*	48.7	210	
215									35.5	6,200*			41.4	6,900*	46.9	215	
220									33.3	5,600*			39.7	6,400*	45.1	220	
225									31.0	4,900*			37.9	5,800*	43.2	225	
230													36.0	5,300*	41.2	230	
235													34.1	4,700*		235	
240													32.0	4,200*		240	
Reeves	2		2		2		1		1		1		1		1	Reeves	

180' Boom																	
Load Radius (ft)	40 ft Jib				60 ft Jib				80 ft Jib				100 ft Jib				Load Radius (ft)
	Offset Angle (deg.)		Offset Angle (deg.)		Offset Angle (deg.)		Offset Angle (deg.)		Offset Angle (deg.)		Offset Angle (deg.)		Offset Angle (deg.)				
	10	30	10	30	10	30	10	30	10	30	10	30	10	30			
	Boom Angle (deg.)	Rated Load (lbs)	Boom Angle (deg.)	Rated Load (lbs)	Boom Angle (deg.)	Rated Load (lbs)	Boom Angle (deg.)	Rated Load (lbs)	Boom Angle (deg.)	Rated Load (lbs)	Boom Angle (deg.)	Rated Load (lbs)	Boom Angle (deg.)	Rated Load (lbs)	Boom Angle (deg.)	Rated Load (lbs)	
50	79.6	59,000*			79.9	42,300*										50	
55	78.3	59,000*			78.7	41,900*										55	
60	76.9	54,700			77.5	41,500*			79.1	21,600*			79.9	13,200*		60	
65	75.6	48,800	78.8	39,100*	76.2	41,200*			77.9	21,400*			78.8	13,000*		65	
70	74.2	44,000	77.4	37,700*	75.0	40,500*			76.8	21,200*			77.8	12,800*		70	
75	72.9	39,900	76.0	36,500*	73.7	37,000	79.4	27,400*	75.6	20,900*			76.7	12,600*		75	
80	71.5	36,300	74.6	35,400*	72.5	33,900	76.8	25,500*	74.5	20,700*	80.0	16,600*	75.7	12,400*		80	
85	70.1	33,300	73.2	34,300*	71.2	31,200	75.5	24,700*	73.3	20,500*	78.8	16,300*	74.6	12,200*		85	
90	68.7	30,600	71.8	31,800	70.2	28,800	74.2	23,900*	72.2	20,300*	77.6	16,100*	73.5	12,000*	80.0	90	
95	67.3	28,200	70.3	29,300	69.9	28,800	72.9	23,200*	71.0	19,800*	76.4	15,800*	72.4	11,700*	78.9	95	
100	65.9	26,100	68.9	27,100	68.6	26,600	71.6	22,600*	69.8	19,400*	75.2	15,600*	71.4	11,400*	77.8	100	
105	64.4	24,200	67.4	25,100	67.3	24,800	70.2	22,000*	68.6	18,900*	73.9	15,400*	70.3	11,100*	76.6	105	
110	62.9	22,500	65.9	23,400	66.0	23,000	68.9	21,400*	67.4	18,500*	72.7	15,200*	69.2	10,800*	75.5	110	
115	61.5	21,000	64.4	21,800	64.7	21,500	68.9	21,400*	66.2	18,200*	71.4	15,000*	68.0	10,500*	74.4	115	
120	59.9	19,600	62.8	20,300	63.3	20,100	67.5	20,800*	66.2	18,200*	70.2	14,800*	66.9	10,300*	73.2	120	
125	58.4	18,300	61.3	19,000	62.0	18,800	66.1	20,100	64.9	17,800*	69.0	14,600*	65.8	10,000*	72.0	125	
130	56.8	17,100	59.7	17,800	60.6	17,600	64.7	18,900	63.7	17,500*	68.9	14,300*	64.6	9,800*	70.9	130	
135	55.3	16,000	58.0	16,600	59.2	16,500	63.2	17,700	62.4	17,100*	67.6	14,000*	63.5	9,600*	69.7	135	
140	53.6	15,100	56.4	15,600	57.8	15,500	61.7	16,700	61.1	16,200	66.3	13,900*	62.3	9,300*	68.5	140	
145	52.0	14,100	54.7	14,600	56.3	14,600	60.2	15,700	59.9	15,200	64.9	13,600*	62.3	9,300*	67.2	145	
150	50.3	13,300	52.9	13,800	54.8	13,700	58.7	14,800	58.5	14,400	63.6	13,300*	61.1	9,100*	65.9	150	
155	48.5	12,500	51.1	12,900	53.3	12,900	57.2	13,900	57.2	13,600	62.2	13,000*	59.9	8,900*	64.7	155	
160	46.7	11,600*	49.3	12,100	51.8	12,200	55.6	13,100	55.8	12,800	60.8	12,800*	58.7	8,800*	63.5	160	
165	44.9	10,800*	47.3	11,300	50.2	11,500	53.9	12,300	54.5	12,100	59.3	12,500*	57.5	8,600*	62.2	165	
170	42.9	9,900*	45.3	10,500*	48.6	10,700*	52.3	11,700	53.1	11,400	57.9	12,300	56.2	8,400*	60.8	170	
175	40.9	9,100*	43.3	9,600*	46.9	9,900*	50.5	11,000	51.6	10,800	56.4	11,600	54.9	8,300*	60.8	175	
180	38.9	8,200*	41.1	8,800*	45.2	9,200*	48.7	10,400	50.1	10,200	54.9	11,000	53.6	8,100*	59.5	180	
185	36.7	7,400*			43.4	8,500*	46.9	9,700*	48.1	9,700	53.3	10,400	52.3	8,000*	58.1	185	
190	34.4	6,700*			41.6	7,800*	45.0	9,000*	47.1	9,000*	51.7	9,800	51.0	7,800*	56.7	190	
195	31.9	5,900*			39.7	7,100*	43.0	8,200*	45.5	8,300*	50.0	9,300	49.6	7,700*	55.3	195	
200					37.7	6,400*	40.9	7,500*	43.9	7,700*	48.3	8,600*	48.2	7,500*	53.8	200	
205					35.6	5,800*			42.2	7,100*	46.5	8,000*	46.8	7,400*	52.3	205	
210					33.4	5,100*			40.4	6,500*	44.6	7,400*	45.3	7,000*	50.8	210	
21																	



Fixed Jib Lifting Capacity

Unit: lbs

Counterweight: 121,300 lbs, Carbody weight: 23,810 lbs

190' Boom

Load Radius (ft)	40 ft Jib				60 ft Jib				80 ft Jib				100 ft Jib				Load Radius (ft)
	Offset Angle (deg.)		Offset Angle (deg.)		Offset Angle (deg.)		Offset Angle (deg.)		Offset Angle (deg.)		Offset Angle (deg.)		Offset Angle (deg.)				
	10	30	10	30	10	30	10	30	10	30	10	30	10	30			
	Boom Angle (deg.)	Rated Load (lbs)	Boom Angle (deg.)	Rated Load (lbs)	Boom Angle (deg.)	Rated Load (lbs)	Boom Angle (deg.)	Rated Load (lbs)	Boom Angle (deg.)	Rated Load (lbs)	Boom Angle (deg.)	Rated Load (lbs)	Boom Angle (deg.)	Rated Load (lbs)	Boom Angle (deg.)	Rated Load (lbs)	
50	80.0	53,100*															50
55	78.8	52,400*															55
60	77.5	51,600*															60
65	76.2	48,300*	79.3	39,600*	79.1	42,000*			79.5	21,700*							65
70	74.9	43,600	78.0	38,200*	76.8	41,300*			78.4	21,500*							70
75	73.6	39,500	76.6	37,000*	75.6	40,000*			77.3	21,200*							75
80	72.3	36,000	75.3	35,900*	74.4	36,600			76.2	21,000*							80
85	71.0	32,900	74.0	34,300	73.2	33,500			75.1	20,800*							85
90	69.7	30,200	72.6	31,500	72.0	30,800			74.0	20,600*	79.2	16,400*					90
95	68.3	27,800	71.2	29,000	70.8	28,400			72.8	20,400*	78.1	16,200*					95
100	67.0	25,700	69.9	26,800	69.5	26,300			71.7	20,100*	76.9	15,900*					100
105	65.6	23,800	68.5	24,800	68.3	24,400			70.6	19,600*	75.8	15,700*					105
110	64.2	22,100	67.1	23,100	67.1	22,700			69.4	19,200*	74.6	15,500*					110
115	62.8	20,600	65.6	21,400	65.8	21,100			68.3	18,800*	73.4	15,300*					115
120	61.4	19,200	64.2	20,000	64.5	19,700			67.1	18,400*	72.2	15,100*					120
125	59.9	17,900	62.7	18,600	63.2	18,400			65.9	18,100*	71.0	14,900*					125
130	58.5	16,700	61.2	17,400	61.9	17,200			64.8	17,700*	70.0	14,700*					130
135	57.0	15,700	59.7	16,300	60.6	16,100			63.6	17,400*	69.8	14,500*					135
140	55.5	14,700	58.1	15,200	59.2	15,100			62.3	17,000*	68.5	14,300*					140
145	53.9	13,800	56.5	14,300	57.9	14,200			61.1	16,600*	67.3	14,200*					145
150	52.3	12,900	54.9	13,400	56.5	13,300			59.9	16,200*	66.0	13,800*					150
155	50.7	12,100*	53.3	12,600	55.0	12,500			58.6	15,800*	64.7	13,600*					155
160	49.1	11,200*	51.6	11,800	53.6	11,800			57.3	15,500*	63.4	13,300*					160
165	47.4	10,300*	49.8	10,900*	52.1	11,000*			56.0	15,100*	62.1	13,000*					165
170	45.6	9,500*	48.0	10,100*	50.6	10,200*			54.7	14,700*	60.7	12,700*					170
175	43.8	8,700*	46.1	9,300*	49.1	9,500*			53.3	14,300*	59.4	12,500*					175
180	41.9	8,000*	44.2	8,500*	47.5	8,800*			52.0	13,900*	58.0	12,300*					180
185	40.0	7,200*	42.2	7,700*	45.9	8,100*			50.6	13,500*	56.5	12,100*					185
190	37.9	6,500*	40.0	7,000*	44.2	7,400*			49.1	13,100*	55.1	11,900*					190
195	35.8	5,700*			42.5	6,800*			47.6	12,700*	53.6	11,700*					195
200	33.6	5,000*			40.7	6,100*			46.1	12,300*	52.0	11,500*					200
205	31.1	4,300*			38.8	5,500*			44.6	11,900*	50.5	11,300*					205
210					36.9	4,900*			43.0	11,500*	48.7	11,100*					210
215					34.9	4,300*			41.3	11,100*	47.1	10,900*					215
220									39.6	10,700*	45.4	10,700*					220
225									37.8	10,300*	43.6	10,500*					225
230											41.7	10,300*					230
235												40.7					235
240													39.8				240
245														41.2			245
Reeves	2		2		2		1		1		1		1		1		Reeves

200' Boom

Load Radius (ft)	40 ft Jib				60 ft Jib				80 ft Jib				100 ft Jib				Load Radius (ft)
	Offset Angle (deg.)		Offset Angle (deg.)		Offset Angle (deg.)		Offset Angle (deg.)		Offset Angle (deg.)		Offset Angle (deg.)		Offset Angle (deg.)				
	10	30	10	30	10	30	10	30	10	30	10	30	10	30			
	Boom Angle (deg.)	Rated Load (lbs)	Boom Angle (deg.)	Rated Load (lbs)	Boom Angle (deg.)	Rated Load (lbs)	Boom Angle (deg.)	Rated Load (lbs)	Boom Angle (deg.)	Rated Load (lbs)	Boom Angle (deg.)	Rated Load (lbs)	Boom Angle (deg.)	Rated Load (lbs)	Boom Angle (deg.)	Rated Load (lbs)	
55	79.2	46,200*			79.6	42,100*											55
60	78.0	45,500*			78.4	41,700*											60
65	76.8	44,700*	79.7	40,000*	77.3	41,400*			79.8	21,800*			79.6	13,100*			65
70	75.6	42,900*	78.5	38,700*	76.2	39,200*			78.8	21,600*			78.6	12,900*			70
75	74.3	39,100*	77.2	37,500*	75.0	37,000*			77.7	21,300*			77.6	12,700*			75
80	73.1	35,700	76.0	36,400*	75.0	35,900*	79.1	27,100*	76.7	21,100*			77.6	12,500*			80
85	71.8	32,600	74.7	33,800*	73.9	33,000*	77.9	26,200*	75.6	20,900*			76.7	12,500*			85
90	70.6	30,000	73.4	31,100*	72.7	30,400*	76.7	25,400*	74.6	20,700*	79.6	16,500*	75.7	12,400*			90
95	69.3	27,600	72.1	28,800	71.6	28,100*	75.5	24,700*	73.5	20,500*	78.5	16,200*	74.7	12,200*			95
100	68.0	25,500	70.8	26,600	70.4	26,000	74.3	24,000*	72.4	20,300*	77.4	16,000*	73.7	12,100*	79.7	8,900*	100
105	66.7	23,600	69.5	24,600	69.2	24,100	73.1	23,300*	71.3	19,900*	76.3	15,800*	72.7	11,700*	78.6	8,700*	105
110	65.4	21,800	68.1	22,800	68.0	22,400	71.9	22,700*	70.2	19,500*	75.2	15,600*	71.6	11,400*	77.6	8,600*	110
115	64.0	20,300	66.8	21,200	66.8	20,800	70.7	22,100*	69.1	19,100*	74.0	15,400*	70.6	11,100*	76.6	8,400*	115
120	62.7	18,900	65.4	19,700	65.6	19,400	69.4	21,000	68.0	18,700*	72.9	15,200*	69.6	10,900*	75.6	8,200*	120
125	61.3	17,600	64.0	18,400	64.3	18,100	68.2	19,600	66.9	18,300*	71.7	15,000*	68.6	10,600*	74.4	8,000*	125
130	60.0	16,400	62.6	17,200	63.1	16,900	66.9	18,400	65.7	17,700*	70.6	14,800*	67.5	10,400*	73.4	8,000*	130
135	58.5	15,400	61.1	16,000	61.8	15,800	65.6	17,200	64.6	16,600	69.4	14,600*	66.5	10,100*	72.3	7,900*	135
140	57.1	14,400	59.7	15,000	60.5	14,800	64.3	16,100	63.4	15,600	68.2	14,400*	65.4	9,900*	71.2	7,800*	140
145	55.7	13,400	58.2	14,000	59.3	13,900	63.0	15,100	62.3	14,600	67.0	14,100*	64.3	9,700*	70.1	7,700*	145
150	54.2	12,500*	56.7	13,100	57.9	13,000*	61.6	14,200	61.1	13,800	65.8	13,800*	63.2	9,500*	69.0	7,600*	150
155	52.7	11,600*	55.2	12,300*	56.6	12,100*	60.2	13,400	59.9	12,900	64.5	13,500*	62.2	9,300*	67.9	7,500*	155
160	51.1	10,800*	53.6	11,400*	55.2	11,300*	58.8	12,600	58.6	12,200	63.3	13,200*	61.0	9,100*	66.7	7,400*	160
165	49.6	9,900*	52.0	10,600*	53.9	10,500*	57.4	11,800	57.4	11,500	62.0	12,500	59.9	8,900*	65.6	7,300*	165
170	48.0	9,100*	50.3	9,700*	52.5	9,800*	56.0	11,100	56.2	10,800	60.7	11,700	58.8	8,700*	64.4	7,200*	170
175	46.3	8,400*	48.6	9,000*	51.0	9,100*	54.5	10,400	54.9	10,100	59.4	11,100	57.6	8,600*	63.2	7,100*	175
180	44.6	7,700*	46.8	8,200*	49.6	8,400*	53.0	9,700	53.6	9,400*	58.1	10,400	56.5	8,400*	62.0	7,000*	180
185	42.8	6,900*	45.0	7,500*	48.1	7,700*	51.4	9,000*	52.3	8,800*	56.7	9,800	55.3	8,300*	60.8	6,900*	185
190	41.0	6,300*	43.1	6,800*	46.5	7,000*	49.8	8,300*	50.9	8,100*	55.3	9,200	54.1	8,100*	59.5	6,900*	190
195	39.1	5,600*	41.1	6,100*	44.9	6,400*	48.1	7,700*	49.5	7,500*	53.9	8,500*	52.9	7,800*	58.3	6,800*	195
200	37.1	4,900*			43.3	5,800*	46.4	7,000*	48.1	6,900*	52.4	7,900*	51.6	7,200*	57.0	6,700*	200
205					41.6	5,200*	44.7	6,400*	46.7	6,400*	50.9	7,300*	50.4	6,700*	55.7	6,700*	205
210					39.9	4,700*	42.8	5,700*	45.2	5,800*	49.3	6,700*	49.1	6,200*	54.3	6,600*	210
215					38.0	4,100*	40.9	5,100*	43.7	5,300*	47.7	6,200*	47.8	5,700*	53.0	6,500*	215
220									40.5	4,200*	46.1	5,600*	46.4	5,200*	51.5	6,300*	220
225											44.4	5,100*	45.0	4,700*	50.1	5,800*	225
230											42						

TRANSPORTATION PLAN

Name	Dimension ft-in (mm)	Weight lbs (kg)
Base Machine <ul style="list-style-type: none"> • Boom base • Gantry • Crane backstop • Wire rope (Front / boom hoist) • Selfremoval cylinder • Without crawler 		84,193 (38,190)
Base Machine <ul style="list-style-type: none"> • Gantry • Wire rope (Front / rear / boom hoist) • Without crawler 		74,669 (33,870)
Base Machine <ul style="list-style-type: none"> • Without crawler • Without gantry • Without wire rope (Front / rear / boom base) 		68,474 (31,060)
Self Removal Cylinder		3,307 (1,500)
Crawler		53,450 (16,080)



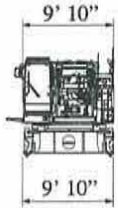
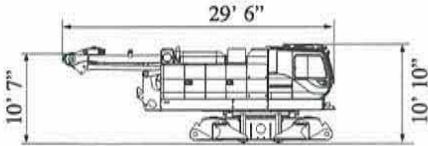
Handwriting practice lines consisting of 25 horizontal lines. The first line contains faint, illegible text. The second line contains a small asterisk symbol. The remaining lines are blank.



PARTS AND ATTACHMENTS

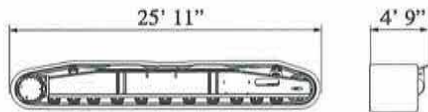
Base Machine

Gantry, wire rope (Front/rear/boom hoist),
Without crawler
Weight: 74,669 lbs Width: 9' 10"



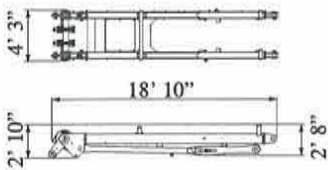
Crawler

Weight: 53,450 lbs



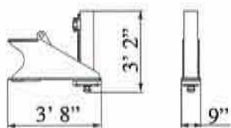
Gantry

Weight: 4,773 lbs



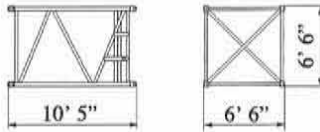
Translifter

Weight: 2,690 lbs x 4 pieces



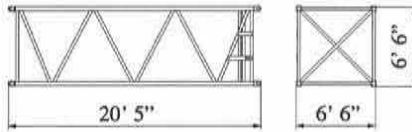
10 ft Insert Boom

Weight: 1,168 lbs



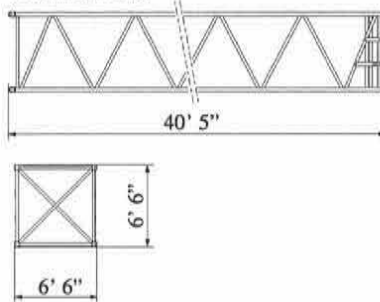
20 ft Insert Boom

Weight: 1,874 lbs



40 ft Insert Boom

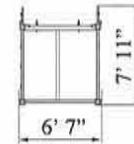
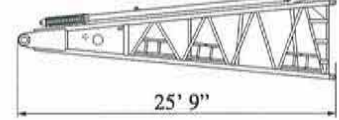
Weight: 3,175 lbs



Dimensions: ft Weight: lbs

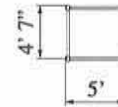
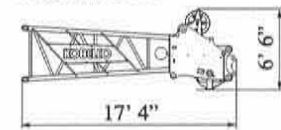
Boom Base

Weight: 8,223 lbs



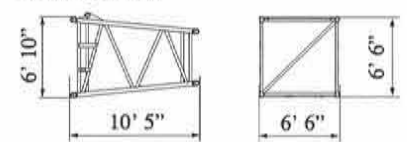
Boom Tip (for Crane)

Weight: 3,682 lbs



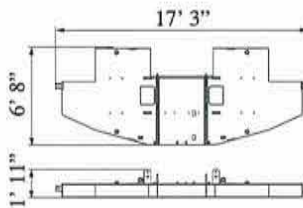
Taper Insert Boom

Weight: 1,080 lbs



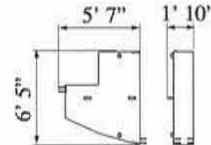
Counterweight (Base weight)

Weight: 22,046 lbs



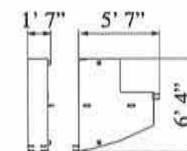
Counterweight

Weight: 9,921 lbs



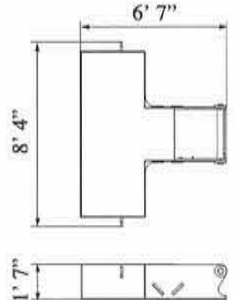
Counterweight (Add. weight)

Weight: 9,921 lbs



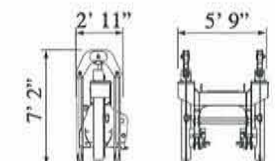
Carbodyweight

Weight: 23,810 lbs x 2 pieces



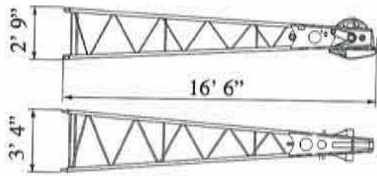
Self Removal Cylinder

Weight: 3,307 lbs

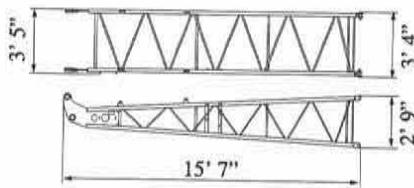


Dimensions: ft Weight: lbs

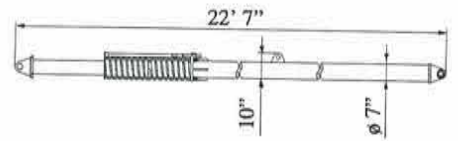
Jib Tip (Fixed Jib)
Weight: 694 lbs



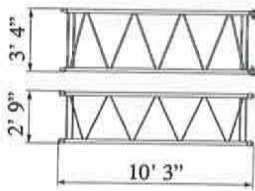
Jib Base (Fixed Jib)
Weight: 463 lbs



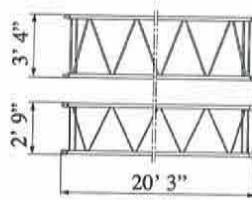
Crane Backstop
Weight: 1,146 lbs (1 piece)



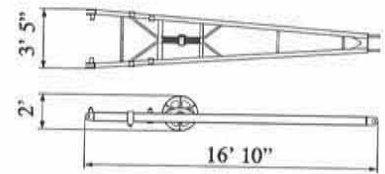
10 ft Insert Jib (Fixed Jib)
Weight: 243 lbs



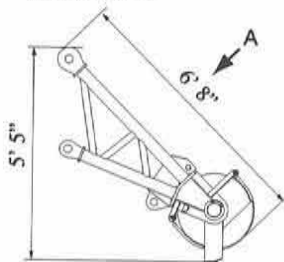
20 ft Insert Jib (Fixed Jib)
Weight: 419 lbs



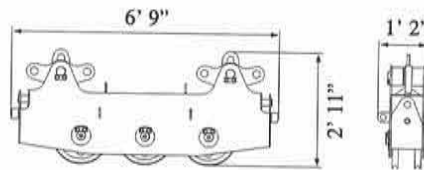
Crane Jib Strut
Weight: 661 lbs



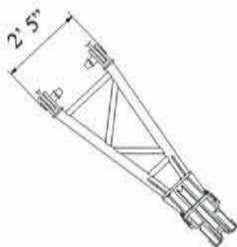
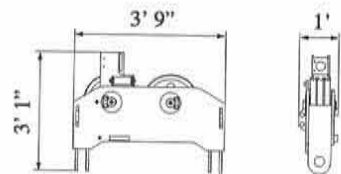
Auxiliary Sheave (for Crane)
Weight: 650 lbs



Upper Spreader (for Crane)
Weight: 1,069 lbs



Lower Spreader (for Crane)
Weight: 694 lbs




VIEW "A"



A series of horizontal lines for writing, consisting of 25 evenly spaced lines across the page.





Note: This catalog may contain photographs of machines with specifications, attachments and optional equipment not certified for operation in your country. Please consult KOBELCO for those items you may require. Due to our policy of continual product improvements all designs and specifications are subject to change without advance notice.

Copyright by KOBELCO CRANES CO., LTD. No part of this catalog may be reproduced in any manner without notice.

KOBELCO CRANES CO., LTD.

17-1, Higashigotanda 2-chome, Shinagawa-ku, Tokyo 141-8626 JAPAN
Tel: +81-3-5789-2130 Fax: +81-3-5789-3372

URL: <http://www.kobelco-cranes.com/>

Inquiries To :

KOBELCO CRANES NORTH AMERICA, INC.

10845 Train Court, Houston, Texas 77041, USA
Tel: +1-713-856-5755 Fax: +1-713-856-9072

URL: <http://www.kobelcocranesnorthamerica.com/>