

Electric battery operated Arm Lift Mobile Crane Max. Capacity **Kg. 40.000**



Valla	
FULL CLOSE	
OUT REACH (mm)	CAPACITY (kg)
3.000	19.000
5.000	10.600
7.000	7.400



Valla	
BACK WIDE	
OUT REACH (mm)	CAPACITY (kg)
3.000	21.000
5.000	11.800
7.000	8.200

TECHNICAL DATA

CRANE FRAME: Eight-wheel frame fabricated from preformed and welded steel plate with possibility to extended the rear power unit

TRANSMISSION: differential axle with reduction gear between motor and wheels running in oil bath. Travelling speed up to 8 Km/h.

BATTERY: 96V 1450Ah battery, battery meter on dashboard.

BRAKES: foot hydraulically operated brakes on 6 wheels (4 front and 2 rear wheels). Parking hand brake mechanically operated.

SUSPENSION: oscillating rear axle with mechanical lock.

STEERING: power steering operated through own hydraulic circuit by a hydraulic cylinder fitted between the articulated power unit and the crane frame allowing 120° steering fitted with safety valves and filters. 6 kW – 96 V motor driven pump.

WHEELS: Nr. 2 rear superelastic 400/60-15" - Nr. 6 front superelastic 355/65 R.15"

BOOM: boom fabricated from preformed and welded quality steel plate. Nr.4 telescoping sections: 1 fixed; 3 hydraulically telescoping. Fitted with nylon wear pads adjustable wear pads on the sides.

BOOM CONTROL: Proportional distributor controlled with joystick. Fitted with filter and safety valves. Motor driven pump 20kW 26V.

LMI: Electronic Load Moment Indicator. Display showing lifted load, max allowed load, tilting percentage, operating radius, angle, telescope and light indicators on the operative mode.

TOTAL WEIGHT: kg. 30.000 (kg.24.000 without counterweight)

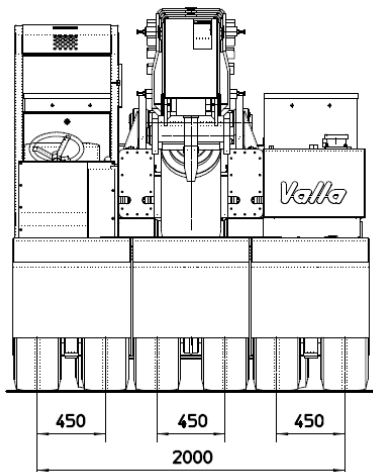
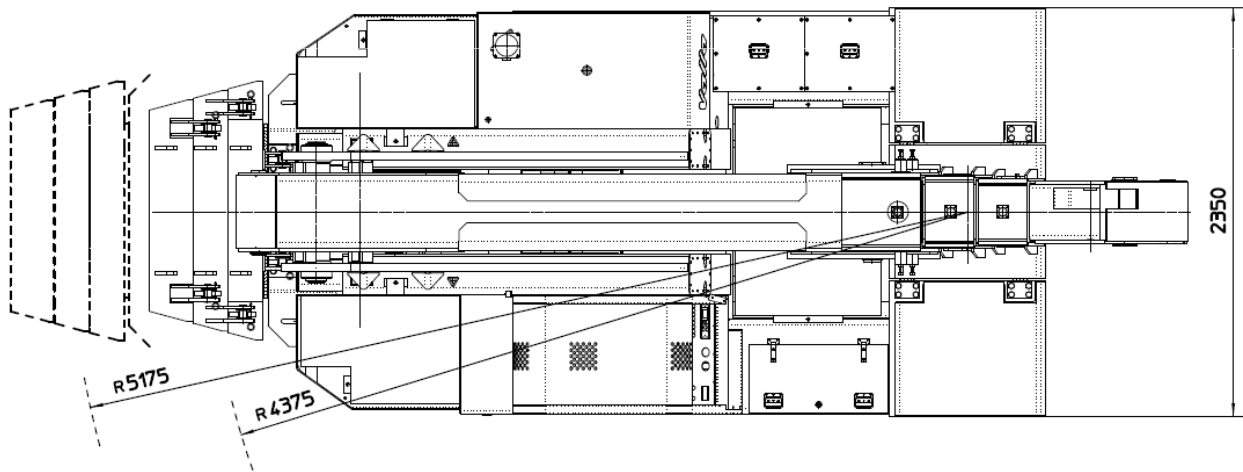
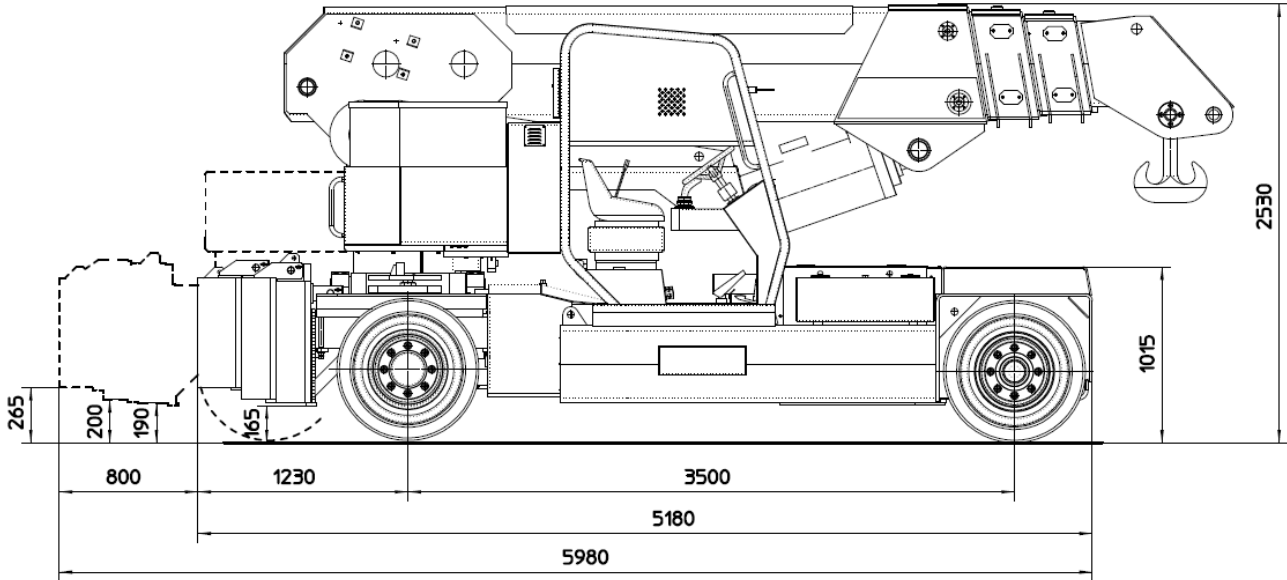
MAX. CAPACITY: kg. 40.000

Options on request: hydraulic winch; chain hoists; carry-deck; battery charger (on board and stand-alone); manual and hydraulic jibs; cable remote control; radio remote control; working light; fire extinguisher.

MANITEX VALLA 400 E



The crane complies with following std.:
 -2006/42/CE
 -UNEN13000
 -I.S.P.E.S.L.

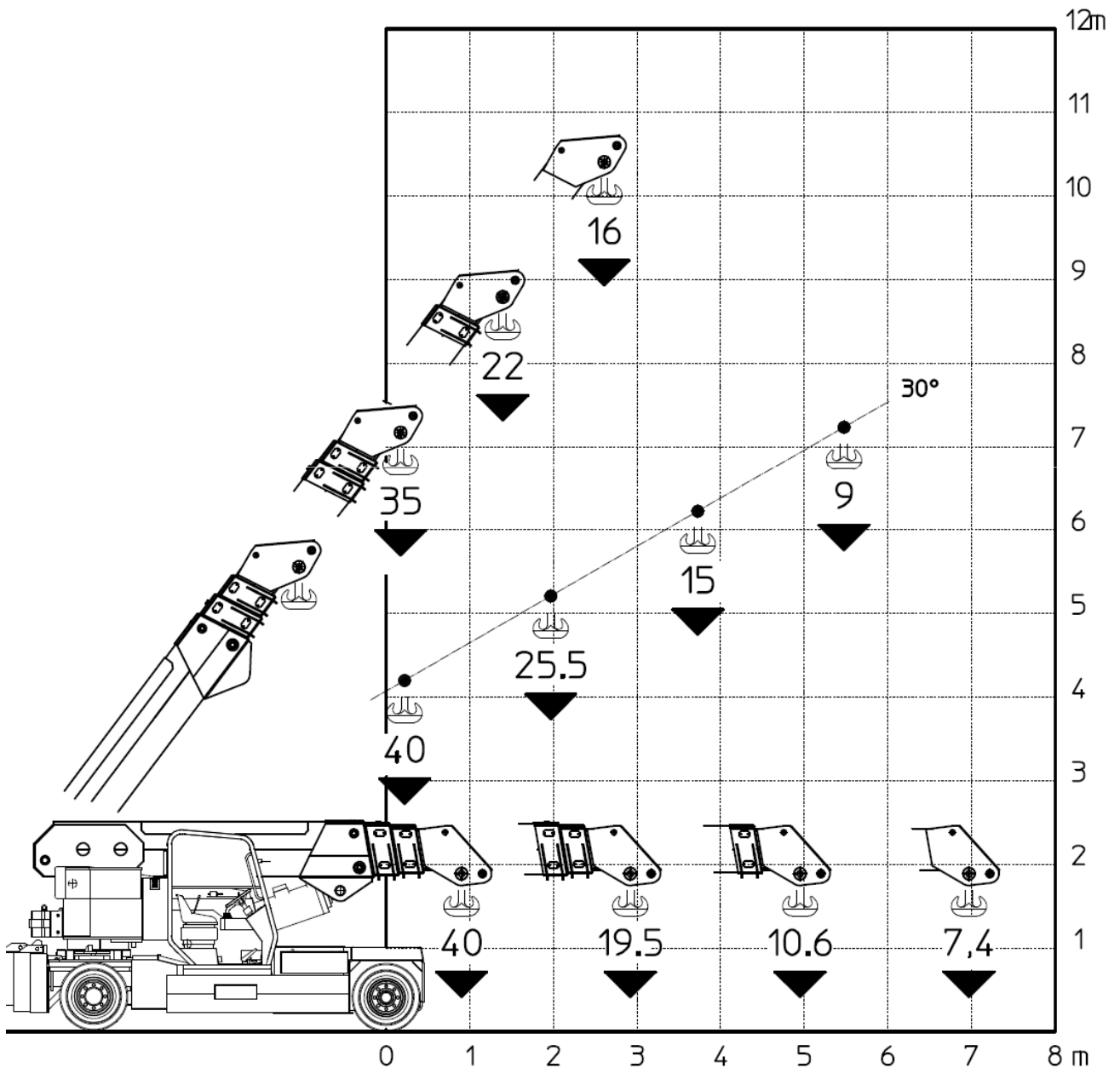


Data subject to be changed without any previous notice. Pictures may differ from technical description.



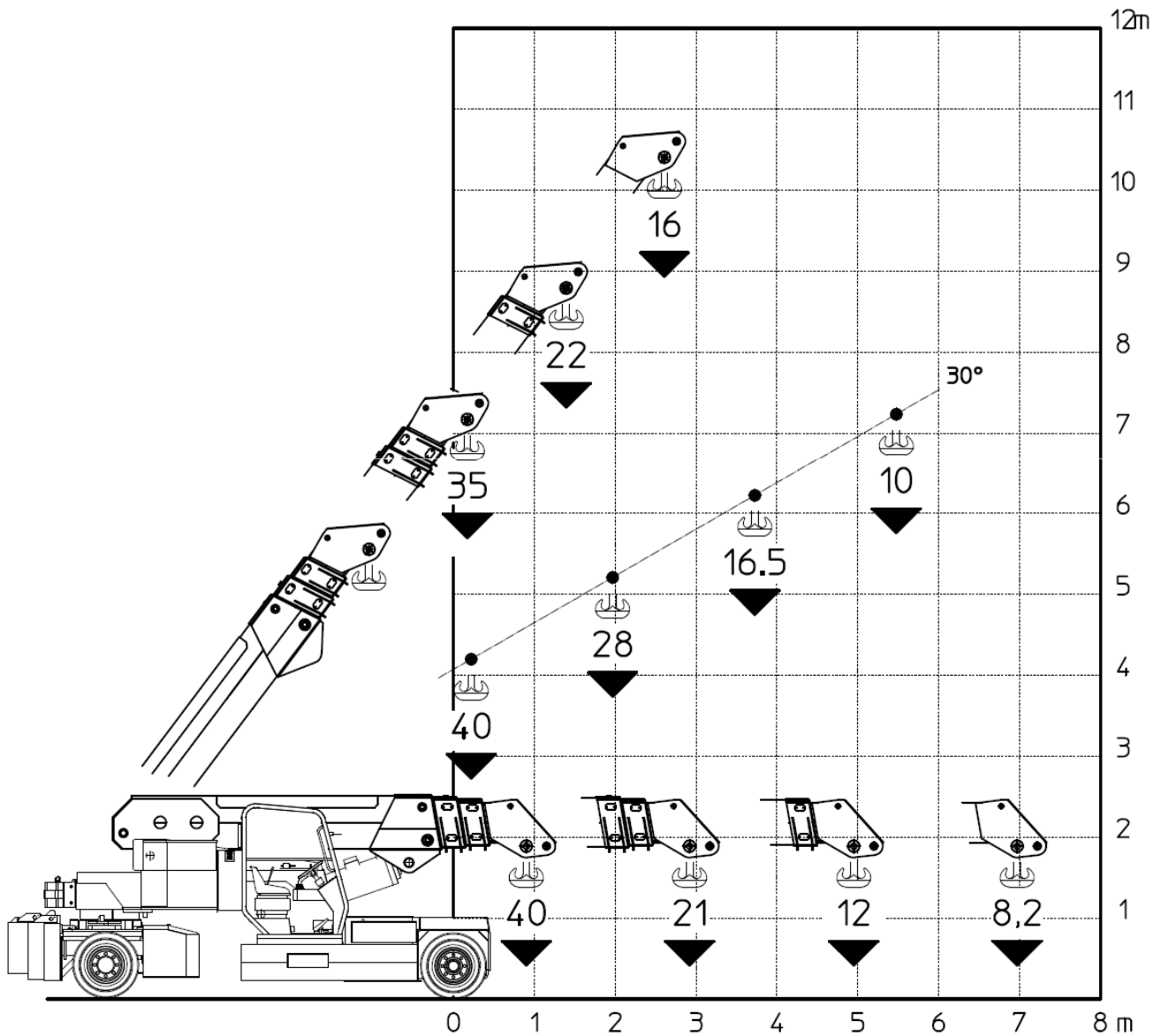
Valla – division of CVS Ferrari Srl
 Via Piacenza, 45 – 29010 Calendasco – Piacenza – ITALIA
 Tel. 0039 0523 762025 – 762004 – Fax 0039 0523 760531
 Internet: www.valla.com – email: info@valla.com

Full close



Data subject to be changed without any previous notice. Pictures may differ from technical description.

Back wide



Data subject to be changed without any previous notice. Pictures may differ from technical description.