

Specifications

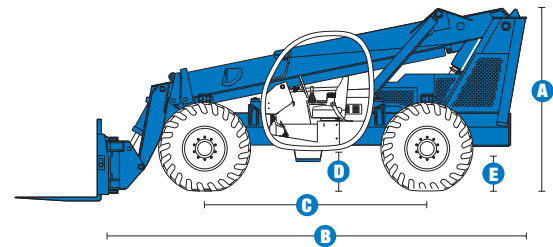
MODEL		GTH™-644	
MEASUREMENTS		US	Metric
Maximum lift height		44 ft	13.41 m
Reach		27 ft	8.23 m
Reach at maximum height		3 ft 6 in	1.07 m
A Height, stowed		8 ft 11 in	2.72 m
B Length, stowed (without forks)		19 ft 10 in	6.05 m
Width		8 ft 6 in	2.59 m
C Wheelbase		10 ft 10 in	3.30 m
D Ground clearance, center		1 ft 5 in	0.43 m
E Ground clearance, axle		1 ft 5 in	0.43 m
Fork cross section		2 x 4 in	51 x 101 mm

PRODUCTIVITY			
Maximum lift capacity		6,000 lbs	2,722 kg
Lift capacity at maximum height		6,000 lbs	2,722 kg
Lift capacity at maximum reach		2,000 lbs	907 kg
Drive speed		17 mph	27.4 km/h
Boom up/down		15/11 seconds	15/11 seconds
Boom extend/retract		18/14 seconds	18/14 seconds
Draw bar pull		19,200 lbs	8,709 kg
Turning radius, outside (4WS)		14 ft 9 in	4.50 m
Auxiliary hydraulic flow		3-7 gpm	11-26 lpm
Auxiliary hydraulic pressure		3,000 psi	207 bar
Tires, standard size		13 x 24 in, 12 ply	

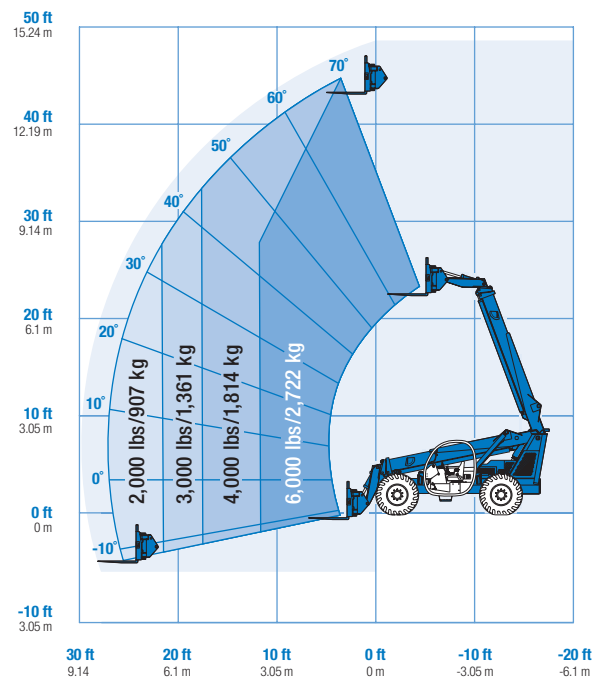
POWER		
Power source		Perkins 1104C-44T turbo-charged diesel 99 hp (73.8 kW) John Deere 4045TF270 4 cylinder turbo-charged diesel 99 hp (73.8 kW) Deutz BF 4 2012 99 hp turbo-charged diesel
Electrical system		System voltage 12 volt Alternator 95 amp Battery 1000 CCA at 0°F (-18°C)
Hydraulic tank capacity		34 gal 129 L
Hydraulic system capacity (w/tank)		50 gal 189 L
Fuel tank capacity		30 gal 114 L

WEIGHT			
Weight*		21,500 lbs	9,752 kg

STANDARDS COMPLIANCE ASME B 56.6, ISO 3471, ISO 3449



LOAD CHART GTH™-644**



* Weight will vary depending on options and/or country standards.
** Load ratings vary depending on attachment.

Features

STANDARD FEATURES

MEASUREMENTS

- 6,000 lb (2,722 kg) maximum lift capacity
- 44 ft (13.41 m) maximum lift height
- 27 ft (8.23 m) maximum reach

PRODUCTIVITY

- Full time planetary 4-wheel drive
- 4WS
- Operator selectable front, crab, coordinated steering modes
- 3-speed forward and reverse powershift transmission
- Frame leveling 10° side to side
- Power assisted steering
- Inboard wet disc service brakes
- Wet disc spring applied parking brake
- 13 x 24 in 12-ply rough terrain tires
- Rear axle stabilization system
- High efficiency/variable displacement hydraulic pump
- ROPS/FOPS canopy (ISO compliant)
- Single, multi-function, proportional joystick
- Rear window
- Machine level indicator
- Full instrumentation
- 48 in carriage and pallet forks
- Boom angle indicator
- 10 micron hydraulic return filter with bypass indicator
- 1,000 cold cranking amps at 0° F (-18° C)
- Reverse motion alarm

OPTIONS & ACCESSORIES

PRODUCTIVITY

- Fully enclosed cab (includes full glass, defroster, wiper, right-side sliding window, split door, washer)
- Fully enclosed cab with air conditioning
- Right-side sliding window
- Glass over skylight bars
- Front window
- Front screen
- Right-side screen
- Adjustable suspension seat
- Dual joystick controls
- Front axle differential lock
- Manual quick attach
- Flashing beacon
- Work lights (2 cab mounted front, 1 back-up, 2 stop/tail)
- Road lights (2 cab mounted front, 1 back-up, 2 rear stop/turn/tail, 2 front turn)
- Auxiliary hydraulic circuit
- Fenders (set of 4)
- Mounted disposable fire extinguisher
- Retractable 3 in (8 cm) seatbelt

ATTACHMENT OPTIONS

- Carriages
 - 60 in (1.52 m) swing carriage (45° from center left and right)
 - 72 in (1.83 m) swing carriage (45° from center left and right)
 - 60 in (1.52 m) wide carriage
 - 72 in (1.83 m) wide carriage
 - 48 in (1.22 m) rotating carriage (10° from center left and right)
 - 60 in (1.52 m) rotating carriage (10° from center left and right)
 - 72 in (1.83 m) rotating carriage (10° from center left and right)



- Forks (in addition to standard 48 in pallet forks)
 - 60 in (1.52 m) pallet forks (set of two) 2 x 4 x 60 in (.05 x .10 x 1.52 m)
 - 72 in (1.83 m) pallet forks (set of two) 2 x 4 x 72 in (.05 x .10 x 1.83 m)
 - 60 in (1.52 m) full taper forks (set of two) 2.25 x 5 x 60 in (.06 x .13 x 1.52 m)
 - 60 in (1.52 m) lumber forks (set of two) 1.75 x 7 x 60 in (.04 x .18 x 1.52 m)
 - Cubing tines (set of 4)
- Bucket
 - Light duty rubbish bucket – 1yd³ (.76m³)
- 14 ft (4.27 m) truss boom

ENGINE OPTIONS

- Perkins 99 hp turbo-charged diesel engine (with glow plug)
- John Deere 99 hp turbo-charged diesel engine
- Deutz 99 hp turbo-charged diesel engine
- Air intake heater (Deutz only)
- Electric block heater
- Electric ether aid (John Deere engine)

TIRE OPTIONS

- 13 x 24 in 12-ply foam-filled rough terrain tires
- 13 x 24 in 12-ply foam-filled rock lug tires
- 13 x 24 in 12-ply air-filled rough terrain tires
- 13 x 24 in 12-ply calcium chloride filled rock lug tires

Genie United States

18340 NE 76th Street
P.O. Box 97030
Redmond, Washington 98073-9730

Telephone **+1 (425) 881-1800**
Toll Free in USA/Canada **+1 (800)-536-1800**
Fax +1 (425) 883-3475

Genie Europe

Millennium House
Brunel Drive
Newark NG24 2DE
UK

Telephone **+44 (0)1476 584333**
Fax +44 (0)1476 584334

Email: infoeurope@genieind.com

Distributed By:

Effective Date: July, 2008. Product specifications and prices are subject to change without notice or obligation. The photographs and/or drawings in this document are for illustrative purposes only. Refer to the appropriate Operator's Manual for instructions on the proper use of this equipment. Failure to follow the appropriate Operator's Manual when using our equipment or to otherwise act irresponsibly may result in serious injury or death. The only warranty applicable to our equipment is the standard written warranty applicable to the particular product and sale and we make no other warranty, express or implied. Products and services listed may be trademarks, service marks or trade-names of Terex Corporation, Genie Industries, Inc. and/or their subsidiaries in the U.S.A. and many other countries and all rights are reserved. Terex® is a Registered Trademark of Terex Corporation in the U.S.A. and many other countries. Genie® is a Registered Trademark of Genie Industries, Inc. in the U.S.A. and many other countries. Genie is a Terex Company. © 2008 Terex Corporation.