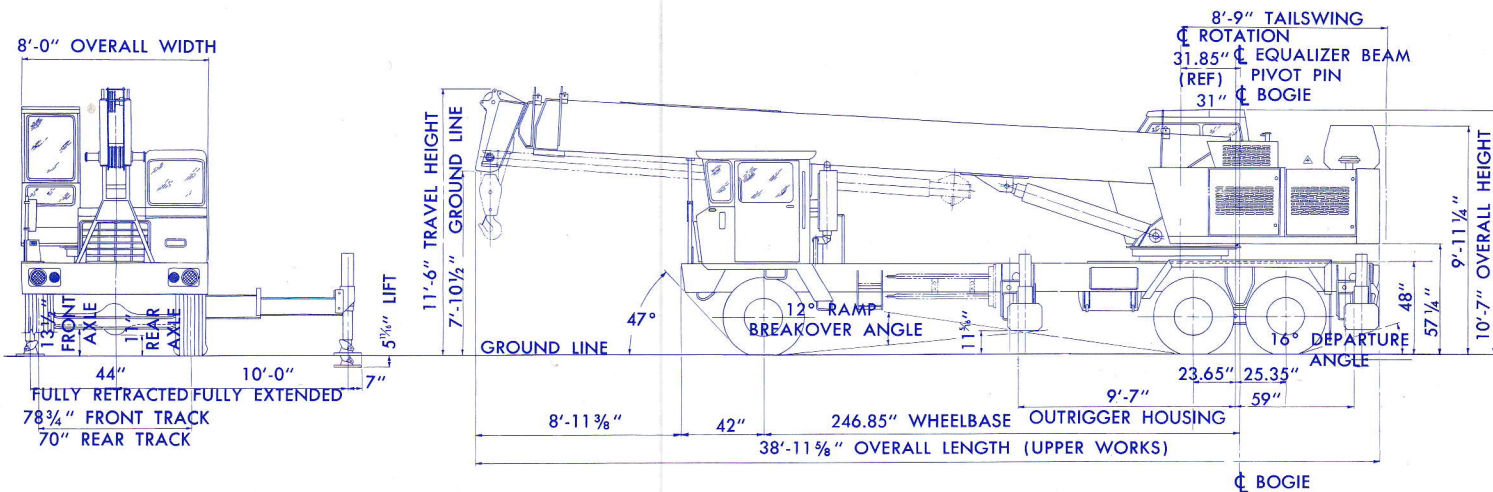


20-XC

HYDROCRANE®

20 TON HYDRAULIC TRUCK CRANE SPECIFICATIONS



882896

HOIST DRUMS

Hoist Unit	Drum	Type of Lagging	Layer of Rope	Pitch Diameter (Inches)	Normal Range		High Range		Rope Capacity	
					Maximum Line Pull in Pounds	Maximum Line Speed (FPM)	Maximum Line Pull in Pounds	Maximum Line Speed (FPM)	With Controlled Free Fall (Feet)	Without Controlled Free Fall (Feet)
B-E Model 10	Main 1/2 Inch Rope	Standard	1 st.	11 1/2	10,000	157	4,960	326	82	102
			2 nd.	12 1/2	9,170	171	4,550	355	172	214
			3 rd.	13 1/2	8,470	185	4,200	384	270	337
			4 th.	14 1/2	7,870	199	3,900	413	376	470
B-E Model 10	Auxiliary (Runner) 1/2 Inch Rope	Standard	1 st.	11 1/2	10,000	157	—	—	82	102
			2 nd.	12 1/2	9,170	171	—	—	172	214
			3 rd.	13 1/2	8,470	185	—	—	270	337
			4 th.	14 1/2	7,870	199	—	—	376	470
B-E Model 10	Auxiliary (Runner) 1/2 Inch Rope	High Speed	1 st.	17 1/2	6,350	246	—	—	127	159
			2 nd.	18 1/2	6,010	261	—	—	262	328

ENGINE SPECIFICATIONS — UPPER

Make	Model	Type	Cylinders	Bore x Stroke (Inches)	Displacement (Cubic Inches)	Horsepower S. A. E. Gross	Max. Altitude (Feet)
Detroit Diesel	4-53N	Diesel	4	3 7/8 x 4 1/2	212	130 at 2600 RPM	4,000
Cummins	V-378C	Diesel	V6	4 5/8 x 3 3/4	378	135 at 2600 RPM	6,000