

# 9/65

Articulating Crane



## ► 9/65 Articulating Crane

Experience superior strength and stability with IMT® 9/65 articulating cranes. Designed for premium performance — even when working in challenging positions with long reaches — these cranes offer outstanding lift-to-weight ratios and reach capabilities. A max lifting capacity of 8380 lb (3800 kg) and a horizontal boom reach of up to 46 ft (14 m) translate into exceptional flexibility on the jobsite. And innovative features and options, including hexagonal booms, internal hose routing, radio remote control, various stabilizer configurations, double link arm system, oil cooler, and more, make operating a 9/65 crane productive and profitable.



### 9/65SL Specifications

	1 - Hydraulic	2 - Hydraulic	3 - Hydraulic	4 - Hydraulic	5 - Hydraulic
<b>Crane Rating*</b>	65,100 ft-lb (9 tm)	62,925 ft-lb (8.7 tm)	61,480 ft-lb (8.5 tm)	59,310 ft-lb (8.2 tm)	57,865 ft-lb (8 tm)
<b>Max Horizontal Reach</b>	18' (5.5 m)	24' 7" (7.5 m)	31' 10" (9.7 m)	38' 9" (11.8 m)	45' 11" (14 m)
<b>Max Vertical Reach</b>	25' 7" (7.8 m)	32' 3" (9.8 m)	39' 4" (12 m)	46' 5" (14.1 m)	53' 4" (16.3 m)
<b>Max Capacity</b>	8380 lb (3800 kg)	7850 lb (3560 kg)	7630 lb (3460 kg)	7165 lb (3250 kg)	6745 lb (3060 kg)
<b>Max Cap @ Max Reach</b>	3660 lb (1660 kg)	2515 lb (1140 kg)	1785 lb (810 kg)	1280 lb (580 kg)	950 lb (430 kg)
<b>Crane Weight **</b>	2360 lb (1070 kg)	2590 lb (1175 kg)	2810 lb (1275 kg)	3010 lb (1365 kg)	3185 lb (1445 kg)
<b>Hook Approach</b>					
Vertical	9' 8" (2.9 m)	9' 4" (2.8 m)	9' 0" (2.7 m)	8' 8" (2.6 m)	8' 4" (2.5 m)
Horizontal	2' 7" (0.8 m)	2' 9" (0.8 m)	2' 11" (0.9 m)	3' 1" (0.9 m)	3' 3" (1 m)
<b>Center of Gravity - Stored</b>					
Vertical	24" (61 cm)	25" (63.5 cm)	26" (66 cm)	27" (68.6 cm)	27.7" (70.4 cm)
Horizontal (C/L Rotation to Bridge)	10.6" (26.9 cm)	10.5" (26.7 cm)	10" (25.4 cm)	9.3" (23.6 cm)	9" (22.9 cm)

### 9/65DL Specifications

	1 - Hydraulic	2 - Hydraulic	3 - Hydraulic	4 - Hydraulic	5 - Hydraulic
<b>Crane Rating*</b>	63,650 ft-lb (8.8 tm)	61,480 ft-lb (8.5 tm)	59,310 ft-lb (8.2 tm)	57,865 ft-lb (8 tm)	55,695 ft-lb (7.7 tm)
<b>Max Horizontal Reach</b>	18' (5.5 m)	24' 7" (7.5 m)	31' 10" (9.7 m)	38' 9" (11.8 m)	45' 11" (14 m)
<b>Max Vertical Reach</b>	25' 7" (7.8 m)	32' 3" (9.8 m)	39' 4" (12 m)	46' 5" (14.1 m)	53' 4" (16.3 m)
<b>Max Capacity</b>	9040 lb (4100 kg)	8555 lb (3880 kg)	8115 lb (3680 kg)	7715 lb (3500 kg)	7340 lb (3330 kg)
<b>Max Cap @ Max Reach</b>	3550 lb (1610 kg)	2425 lb (1100 kg)	1720 lb (780 kg)	1235 lb (560 kg)	950 lb (410 kg)
<b>Crane Weight **</b>	2415 lb (1094 kg)	2645 lb (1200 kg)	2865 lb (1300 kg)	3065 lb (1390 kg)	3240 lb (1470 kg)
<b>Hook Approach</b>					
Vertical	9' 8" (2.9 m)	9' 4" (2.8 m)	9' (2.7 m)	8' 8" (2.6 m)	8' 4" (2.5 m)
Horizontal	2' 7" (0.8 m)	2' 9" (0.8 m)	2' 11" (0.9 m)	3' 1" (0.9 m)	3' 3" (1 m)
<b>Center of Gravity - Stored</b>					
Vertical	25" (63.5 cm)	26" (66 cm)	27.4" (69.6 cm)	28" (71.1 cm)	28.7" (72.9 cm)
Horizontal (C/L Rotation to Bridge)	10" (25.4 cm)	10" (25.4 cm)	9.8" (24.9 cm)	9" (22.9 cm)	8.7" (22.1 cm)

\* Crane rating (ft-lb) is the rated load (lb) multiplied by the respective distance (ft) from centerline of rotation with all extensions retracted and the inner and outer booms in a horizontal position, per ANSI B30.22. \*\* Crane weight is for standard crane with tank & 8-bolt long mounting kit. Does not include stabilizers, tank or oil.

## Standard Features

- Application-specific product offering
- Superior lift-to-weight ratio
- Long-reach capabilities
- Hexagonal booms for superior reach and maximum control
- Internal hose routing
- 15° overbending on outer boom

## Options

- Radio remote control
- Various stabilizer configurations
- Double link arm system
- Floodlight on outer boom
- Boom tip functions for hydraulic attachments
- Oil cooler

## Specifications

<b>Stabilizer Pad Diameter</b>	6" (15.2 cm)
<b>Crane Storage Height</b>	7' (2.1 m)
<b>Mounting Space</b>	2' 5" (0.8 m)
<b>Rotational Torque</b>	9665 ft-lb (1.3 tm)
<b>Rotation</b>	420°
<b>Optimum Pump Performance</b>	10.5 gpm (40 L/min)
<b>System Pressure</b>	4350 psi (300 bar)
<b>Oil Reservoir Capacity</b>	14.5 gal (55 L)
<b>Stabilizer Extension Span</b>	
Standard	13' 8" (4.2 m)
Weight (manual out/hydraulic down fixed stabilizer)	355 lb (160 kg)
Weight (manual out/hydraulic down swing-up stabilizer)	365 lb (165 kg)
Extended Reach	16' 10" (5.1 m)
Weight (hydraulic out/hydraulic down fixed stabilizer)	410 lb (185 kg)
Weight (hydraulic out/hydraulic down swing-up stabilizer)	420 lb (190 kg)

## Minimum Chassis Specifications

<b>Front Axle Rating (GAWR)</b>	8000 lb (3630 kg)
<b>Rear Axle Rating (GAWR)</b>	16,000 lb (7260 kg)
<b>Resistance to Bending Moment Minimum</b>	976,500 in-lb (112,505 kg-m)

## Hexagonal Boom Design

A wide hexagonal profile with large bearing surfaces ensures greater strength and stability for horizontal and vertical spans — even when working in extreme positions with long reaches. Plus, it's protected by powdercoat paint that never fades, flakes, or corrodes.



### Internal Hose Routing

Fed internally through protective nylon drag chains or roller guides, all hoses are equipped with sturdy, high-pressure swivel couplings to prevent them from twisting.



### Overbending

Overbending between the main boom and jib provides greater flexibility when working under power wires and more potential for high lifting in narrow passages. It also lowers the total height when the loader is stowed over the truck body.



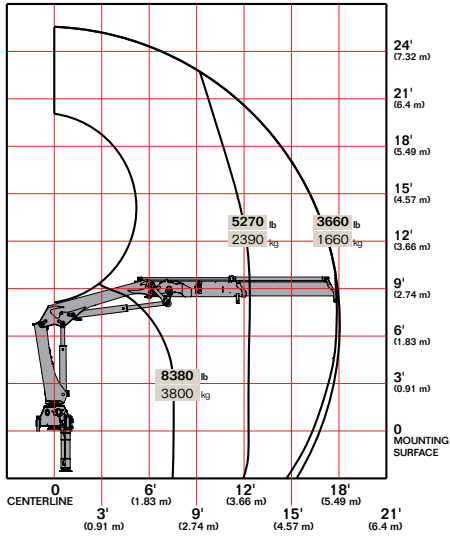
### Stow Bracket Innovation

The stow bracket is designed to secure the boom for transport position but not allow for bracket damage. Unlike systems with rigid fixed brackets, the "J" hook will pivot if an incorrect movement is attempted.

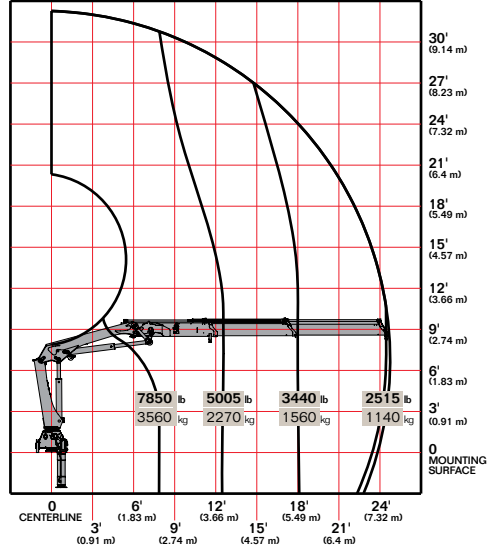


# ► 9/65SL Capacity Charts

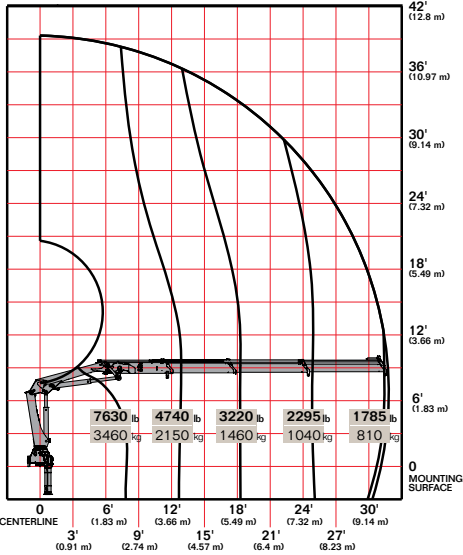
### 9/65SL K1



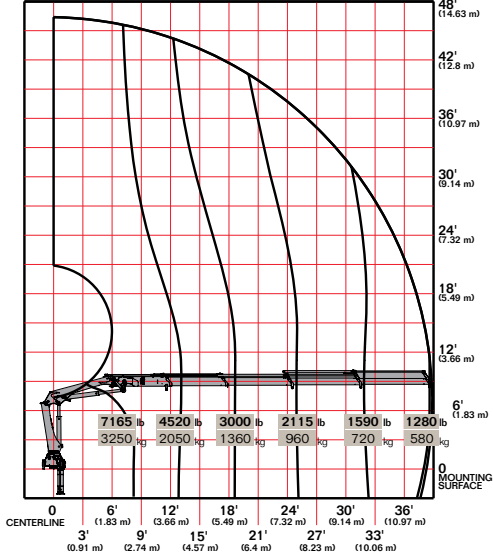
### 9/65SL K2



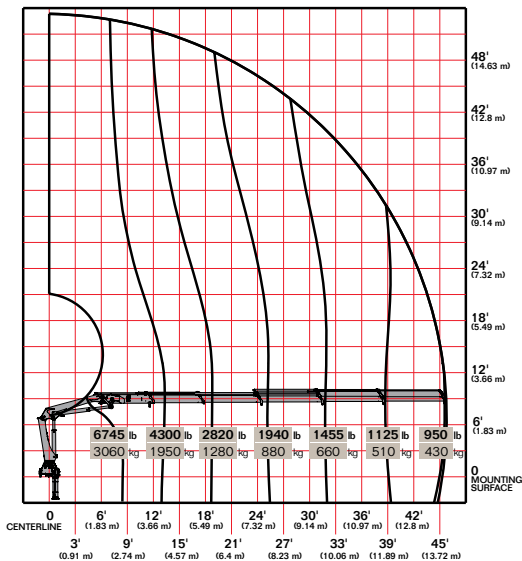
### 9/65SL K3



### 9/65SL K4



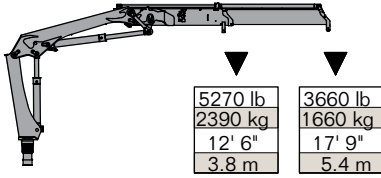
### 9/65SL K5



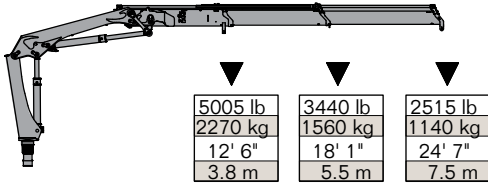
Limit working loads to those shown. Deduct the weight of load-handling devices.

# ► 9/65SL Lifting Capacity

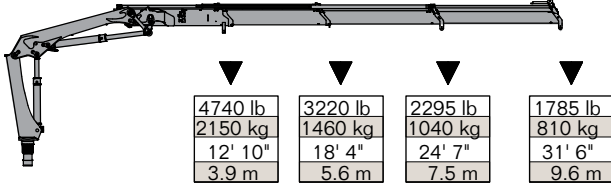
9/65SL - 1 Hydraulic



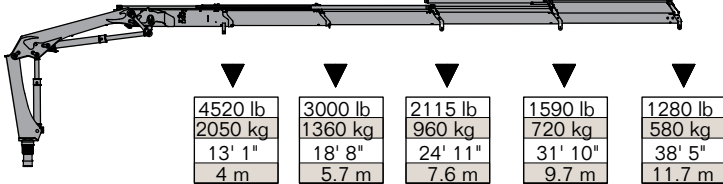
9/65SL - 2 Hydraulic



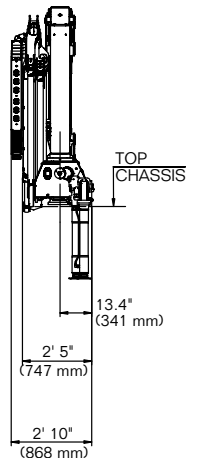
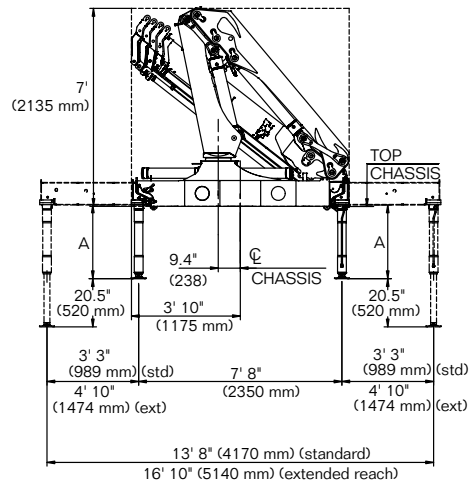
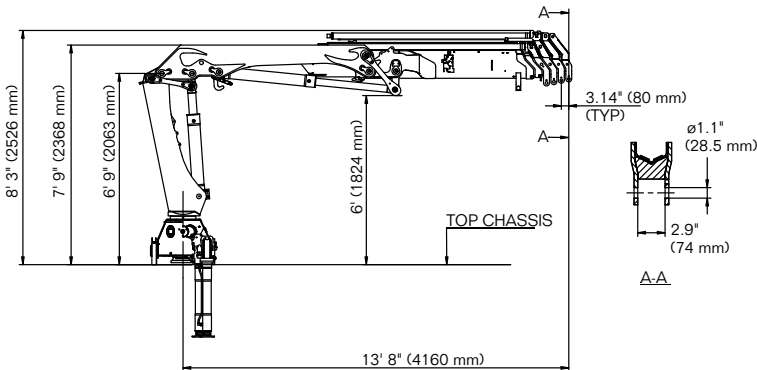
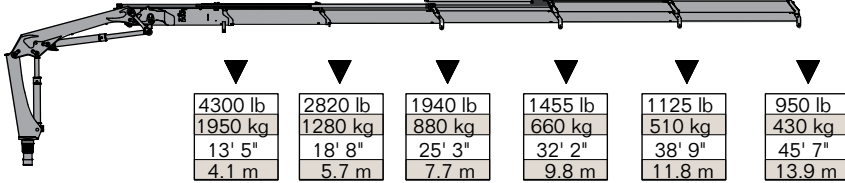
9/65SL - 3 Hydraulic



9/65SL - 4 Hydraulic

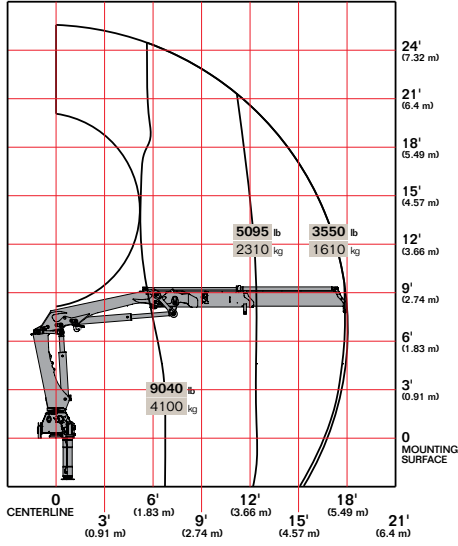


9/65SL - 5 Hydraulic

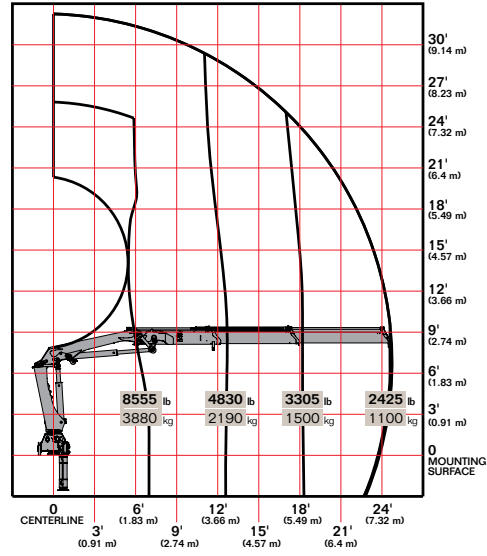


# ► 9/65DL Capacity Charts

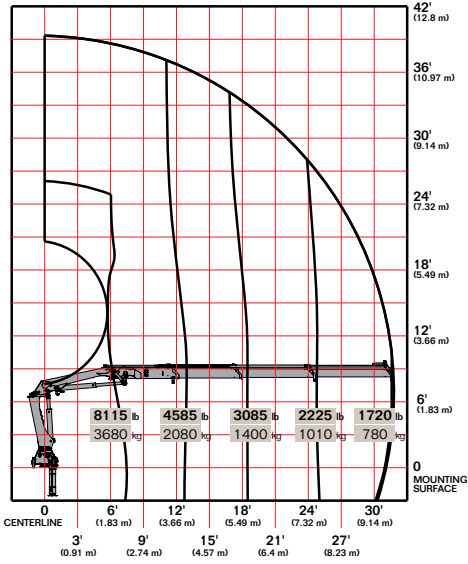
### 9/65DL K1



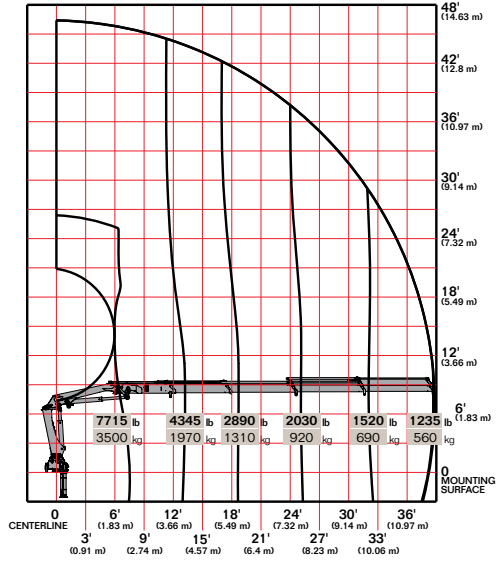
### 9/65DL K2



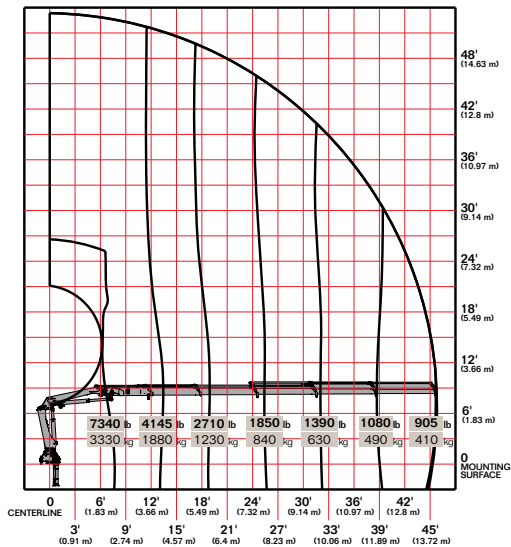
### 9/65DL K3



### 9/65DL K4



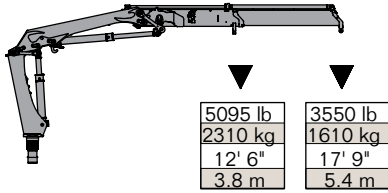
### 9/65DL K5



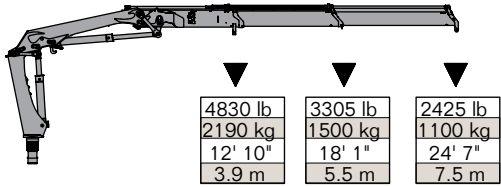
Limit working loads to those shown. Deduct the weight of load-handling devices.

# ► 9/65DL Lifting Capacity

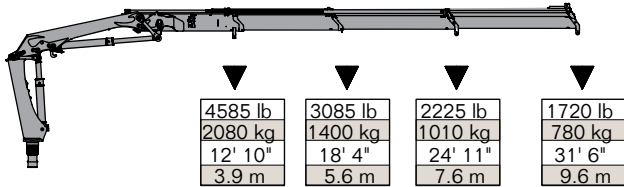
9/65DL - 1 Hydraulic



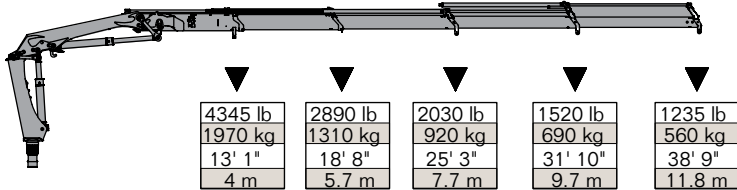
9/65DL - 2 Hydraulic



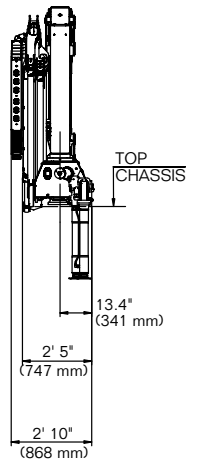
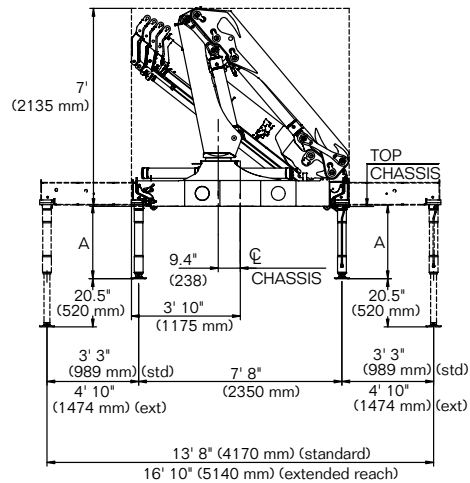
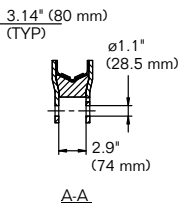
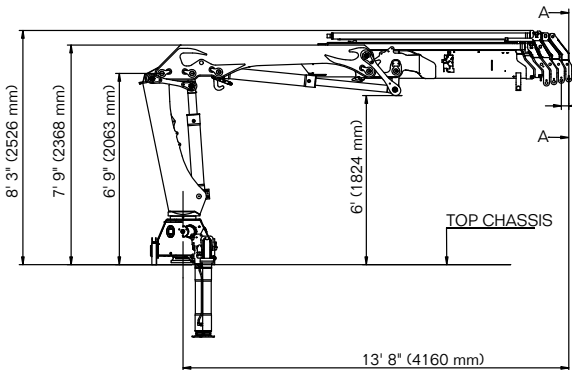
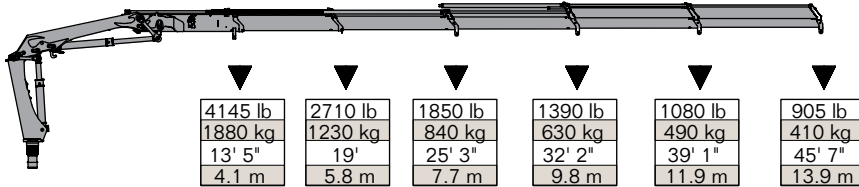
9/65DL - 3 Hydraulic



9/65DL - 4 Hydraulic



9/65DL - 5 Hydraulic



### Power Source

- Standard integral-mounted piston hydraulic pump and PTO application

### Cylinder Holding Valves

- Integral-mounted counterbalance valves or load-holding check valves
- Prevention of sudden cylinder collapse in case of hose failure

### Rotation System

- 400 degree rack and pinion
- 9665 ft-lb (1.3 tm) rotational torque
- Counterbalance valve on each cylinder to stop motion in case of hose failure

### Hydraulic System

- Open-centered system — closed optional
- Regeneration system on extension cylinder to ensure quick deployment
- Hydraulic oil reservoir, air breather, replaceable return-line filter, and control valve with levers

### Overload System

- Load-limiting capability for boom functions
- Rated capacity limitation (RCL) 5300 blocks load-increasing functions when full capacity is attained



### Nothing Says Commitment Like The Diamond.™

IMT has been meeting the needs of our customers for over 50 years and none of it would have been possible without a distributor network that's second to none. IMT distributors offer fast, knowledgeable service and the ability to help customers find the right product for every application. When you're looking for reliable equipment and dependable service, remember IMT.



An Oshkosh Corporation Company

**Iowa Mold Tooling Co., Inc.**  
500 Highway 18 West  
Garner, Iowa 50438  
800-247-5958 • [www.imt.com](http://www.imt.com)