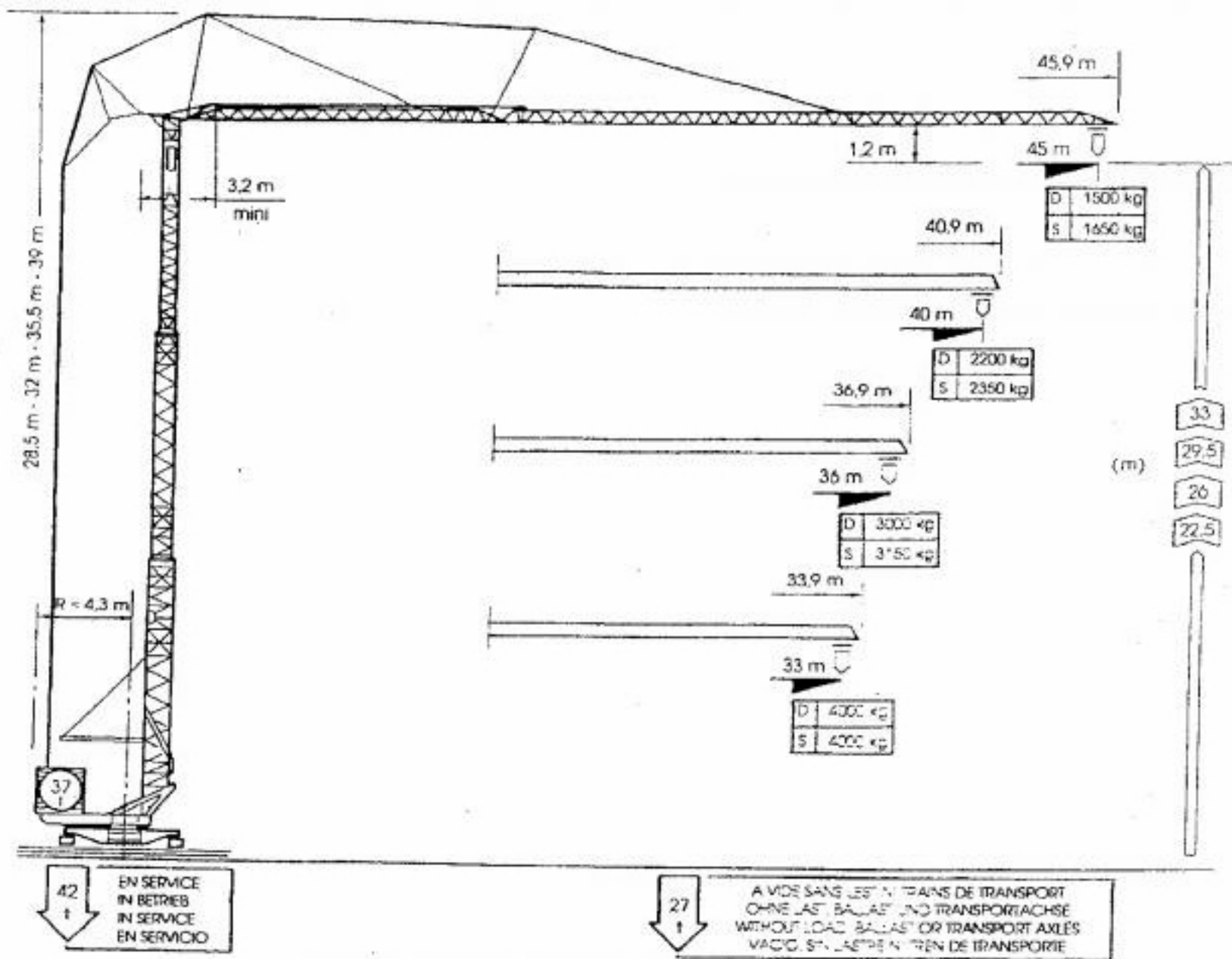


CADILLON CHRONO 45



		CHRONO 45 NF															
D		12.2	13	14.2	15	16.1	17	18.4	21	24	27	29	31	33	36	40	45 m
W	45 m	8000	7400	6630	6170	5650	5270	4750	4050	3420	2950	2690	2470	2280	2030	1760	1500
	40 m			8000	7460	6830	6380	5760	4920	4180	3610	3300	3040	2810	2520	2200	
	36 m					8000	7480	6750	5790	4920	4270	3910	3600	3340	3000		
	33 m							8000	6860	5850	5090	4670	4310	4000			kg
S		21.9	23	24	25.6	27	28	29.4	31	32	33	35	36	38	40	43	45 m
	45 m	4000	3760	3570	3300	3100	2960	2800	2620	2520	2430	2260	2180	2040	1910	1750	1650
	40 m				4000	3760	3600	3400	3190	3070	2960	2760	2670	2500	2350		
	36 m							4000	3750	3620	3490	3250	3150				
										4000							kg