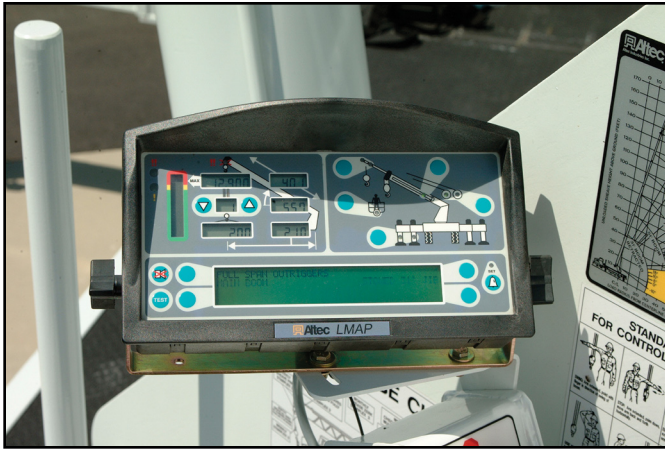




Altec AC18-70R-HL Hydraulic Telescopic Crane

- 18 Ton (16.3 t) Maximum Lifting Capacity
- 70 ft (21.3 m) 3-Section Boom
- Altec LMAP (Load Moment & Area Protection) System





Altec LMAP System

RECOMMENDED FEATURES

- Wheel Chocks
- Fall Protection System (with Platform)
- Radio Remote Control (with Platform)
- Outrigger Pads

CRANE SPECIFICATIONS

- 36,000 lb (16,330 kg) Maximum Lifting Capacity
- 70 ft (21.3 m) 3-Section Non-Insulated Boom
- 80 ft (24.4 m) Maximum Sheave Height
- Stowed Travel Height of 12.8 ft (3.9 m)
- 370° Non-Continuous Rotation
- Outriggers:
 - Main – Pivot Beam
 - Auxiliary – Modified A-Frame
- Hydraulic Pilot-Operated Control System
- Life Cycle Tested for Reliability

STANDARD SAFETY FEATURES

- Altec LMAP (Load Moment & Area Protection) System
 - Rated Capacity Limiter
 - Displays Boom Length, Angle, Load on Hook, Percent of Rated Capacity
 - Electronic Working Area Definition
 - Operator Audible Alarm Set-Points for Boom Angle, Length and Rotational Position
- Outrigger Boom Interlock System
- Outrigger Motion Alarm
- Back-up Alarm
- Emergency Stop at Operator Controls
- Anti-Two Block Device

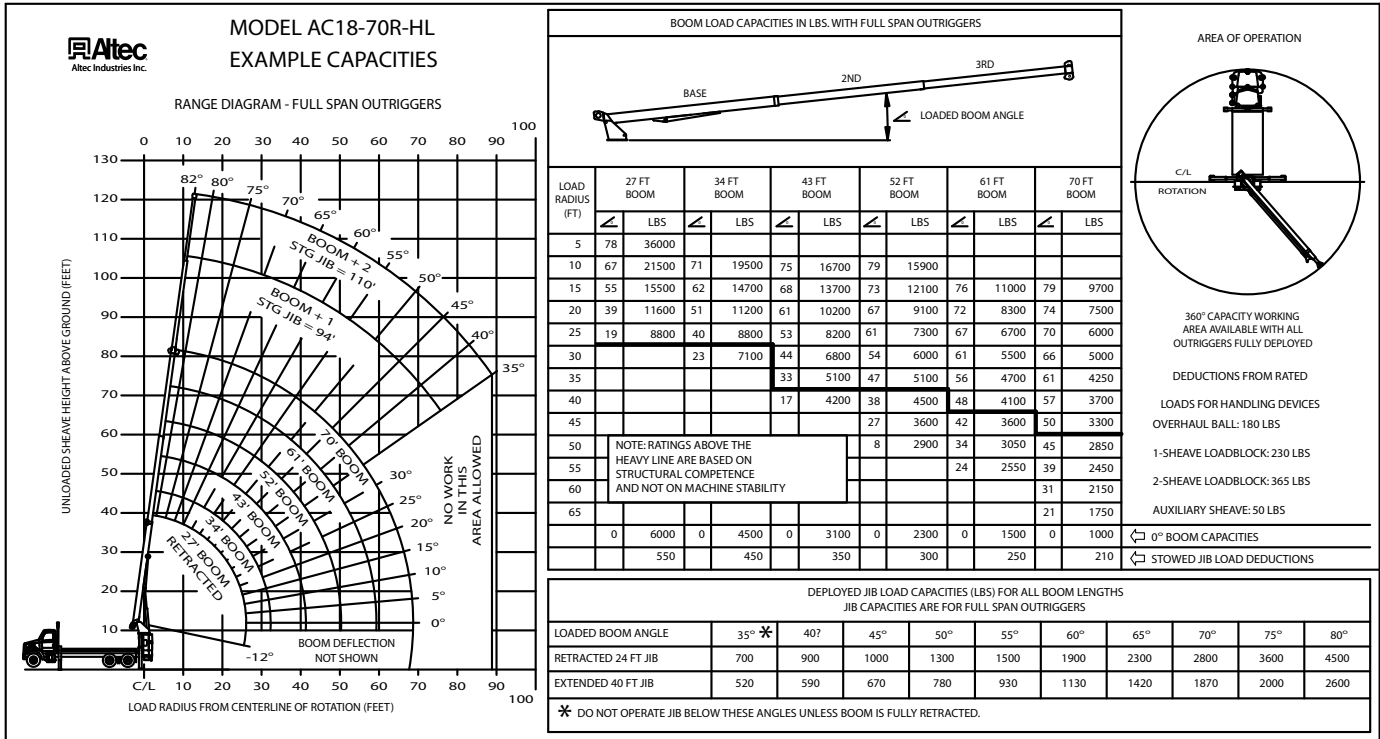
OPTIONS

- 2-Piece 40 ft (12.2 m) Jib, 24 ft (7.3 m) Retracted
- 1-Piece 24 ft (7.3 m) Jib
- Load Hook/Winch Stow Switch
- 2-Man Steel Platform, 700 lb (318 kg) Capacity, 30 x 60 in (762 x 1524 mm)
- Load Blocks for Multiple Parts of Line
- Hydraulic Tool Circuit at Tail Shelf
- Pintle Hitch
- Utility Tool Boxes
- Rotation Resistant Wire Rope
- Oil Cooler
- Drum Rotation Indicator

CHASSIS REQUIREMENTS

Gross Vehicle Weight Rating	58,000 lb	26,310 kg
Front Axle Weight Rating	18,000 lb	8,165 kg
Rear Axle Weight Rating	40,000 lb	18,145 kg
Cab-to-Axle	192 in	4,877 mm
Wheel Base	261 in	6,629 mm

Altec AC18-70R-HL Capacities



OPERATOR AIDS MUST BE IN GOOD OPERATING CONDITION BEFORE OPERATING CRANE. REFER TO OWNERS MANUAL.	1 PART LOAD LINE	2 PART LOAD LINE	3 PART LOAD LINE	4 PART LOAD LINE	
	KEEP AT LEAST 3 WRAPS OF LOADLINE ON DRUM AT ALL TIMES.				
USE ONLY 9/16" DIAMETER IWRC OR ROTATION RESISTANT WIRE ROPE WITH 37,000 LBS. MIN. BREAKING STRENGTH ON THIS MACHINE.	LOADS UP TO	LOADS UP TO	LOADS UP TO	LOADS UP TO	
IWRC XXIP WIRE ROPE	10,571 LBS.	21,142 LBS.	31,713 LBS.	36,000 LBS.	
ROTATION RESISTANT WIRE ROPE	7,400 LBS.	14,800 LBS.	22,200 LBS.	29,600 LBS.	
MAXIMUM BOOM LENGTH AT MAXIMUM ELEVATION WITH RIGGING SHOWN TO REACH THE GROUND	70 FT BOOM + 44 FT JIB	70 FT BOOM	49 FT BOOM	37 FT BOOM	
WINCH		LIFTS AND SPEEDS			
9/16" DIAMETER IWRC XXIP CABLE SUPPLIED	STANDARD PLANETARY WINCH SUPPLIED	8,410 LBS. 147 FT/MIN	16,820 LBS. 74 FT/MIN	25,230 LBS. 49 FT/MIN	33,640 LBS. 37 FT/MIN
ALL WINCH PULLS AND SPEEDS IN THIS CHART ARE SHOWN ON THE 3RD LAYER. WINCH LINE PULLS WOULD INCREASE ON THE FIRST AND SECOND LAYERS. WINCH LINE SPEED WOULD DECREASE ON THE FIRST AND SECOND LAYERS. WINCH LINE PULLS MAY BE LIMITED BY THE WINCH CAPACITY OF 8,410 LBS FULL DRUM OR ANSI CABLE SAFETY LIMITS SHOWN IN CHART FOR IWRC XXIP AND ROTATION RESISTANT WIRE ROPES.					

CAUTION:

- Load ratings shown are maximum allowable loads with the crane mounted on an Altec-approved chassis.
- Loaded boom angles at specified boom lengths give only an approximation of the operating radius. The boom angle before loading should be greater to account for deflections. Do not exceed the operating radius for rated loads.
- When between listed lengths for radii, always use the smallest of values shown. Capacities for the 31 ft boom length must only be lifted with boom fully retracted.
- Load ratings are based on freely suspended loads with the crane properly set-up on outriggers, with the machine leveled and standing on firm uniform supporting surface.
- Actual working capacities depend on supporting surfaces, wind and other factors affecting stability such as hazardous surroundings, experience of personnel, and proper handling.
- Weights of load block, stowed jib, or other accessories must be deducted from the rated capacities shown.



For Service: 1-877-GO-ALTEC
For Sales: 1-540-992-5300

Altec Cranes are supported by service centers and over 115 mobile service technicians positioned across North America, seven days a week, 24 hours a day.

United States:

Alabama Service Center
 1730 Vanderbilt Road
 Birmingham, AL 35234

Arizona Service Center
 2420 South 16th Avenue
 Phoenix, AZ 85007

California Service Center (Northern)
 325 Industrial Way
 Dixon, CA 95620

California Service Center (Southern)
 2882 Pomona Boulevard
 Pomona, CA 91766

Colorado Service Center
 641 Telluride Street
 Aurora, CO 80011

Florida Service Center
 2570 Old Okeechobee Road
 Palm Beach, FL 33409

Georgia Service Center
 287 First Street
 Forest Park, GA 30297

Indiana Service Center
 5201 West 84th Street
 Indianapolis, IN 46268

Kentucky Service Center
 200 Altec Drive
 Elizabethtown, KY 42701

Maryland Service Center
 1434 Hughes Ford Road
 Frederick, MD 21701

Massachusetts Service Center
 28 Wales Street
 Millbury, MA 01527

Missouri Service Center
 2106 S. Riverside Road
 St. Joseph, MO 64507

North Carolina Service Center
 1550 Aerial Avenue
 Creedmoor, NC 27522

Ohio Service Center
 1236 Township Road 1175
 Ashland, OH 44805

Oregon Service Center
 13817 NE Sandy Boulevard
 Portland, OR 97230

Pennsylvania Service Center
 250 Laird Street
 Plains, PA 18705

Texas Service Center
 1001 Solon Road
 Waxahachie, TX 75156

Virginia Service Center
 325 South Center Drive
 Daleville, VA 24083

Canada:

British Columbia Service Center
 12352 84th Avenue
 Surrey, BC V3W 0J5

Manitoba Service Center
 57 Durand Road
 Winnipeg, Manitoba R2J 3T1

Ontario Service Center
 831 Nipissing Road
 Milton, Ontario L9T 4Z4



Altec Industries, Inc.
 325 South Center Drive
 Daleville, VA 24083



Manufacturing and Service Facilities Located
 Throughout the United States and Canada
www.altec.com