

## STANDARD FEATURES

- Altec ISO-Grip® Control System
- Altec Patented Walking Link Upper Boom Drive System
- Lifetime Platform Leveling System
- No Required Major Scheduled Maintenance
- Insulated, ANSI Category C or B
- Lifetime Structural Warranty
- Insulated Lower Boom Insert
- Outrigger Boom Interlock System
- Outrigger Motion Alarm
- Back-Up Alarm

## RECOMMENDED FEATURES

- Fall Protection System
- Outrigger Pads
- Platform Liner
- Wheel Chocks

## OPTIONS

- 56 ft (17.3 m) Forestry Mount and 57 ft (17.6 m) Rear Mount Available in Under-CDL Configurations
- Dual Hydraulic Tool Circuits
- Automatic Boom Stow System

## GENERAL SPECIFICATIONS

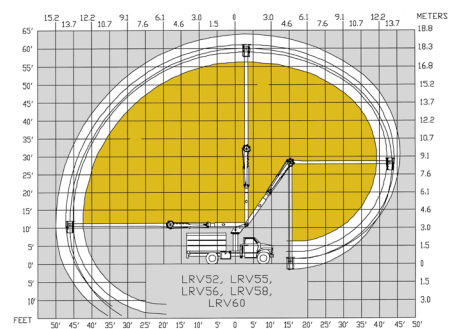
	LRV52		LRV55		LRV56		LRV58		LRV60	
Ground to Bottom of Platform	52.7 ft	16.1 m	55.6 ft	17.0 m	56.6 ft	17.3 m	57.6 ft	17.6 m	59.6 ft	18.2 m
Working Height*	57.7 ft	17.6 m	60.6 ft	18.5 m	61.6 ft	18.8 m	62.6 ft	19.1 m	64.6 ft	19.7 m
Maximum Reach from Centerline of Rotation to Lip of Platform	42.4 ft	12.8 m	45.4 ft	13.8 m	46.4 ft	14.1 m	47.4 ft	14.4 m	49.4 ft	15.1 m
Maximum Reach with Lower Boom at 125°	40.0 ft	12.2 m	42.5 ft	13.0 m	43.9 ft	13.4 m	44.5 ft	13.6 m	45.7 ft	13.9 m
Stowed Travel Height, Approx.*	12.2 ft	3.7 m	12.2 ft	3.7 m	12.2 ft	3.7 m	12.2 ft	3.7 m	12.2 ft	3.7 m
Upper Boom Isolation Gap	14.4 ft	4.4 m	16.4 ft	5.0 m	18.4 ft	5.6 m	18.4 ft	5.6 m	18.4 ft	5.6 m
Lower Boom Isolation Gap	15.0 in	381 mm	15.0 in	381 mm	15.0 in	381 mm	15.0 in	381 mm	15.0 in	381 mm
Platform Capacity ( <i>may vary based on stability</i> ) Side-mounted, one-man	400 lb	181 kg	400 lb	181 kg	350 lb	159 kg	350 lb	159 kg	350 lb	159 kg
Platform Dimensions Side-mounted, one-man	24 x 24 x 39 in 610 x 610 x 991 mm		24 x 24 x 39 in 610 x 610 x 991 mm		24 x 24 x 39 in 610 x 610 x 991 mm		24 x 24 x 39 in 610 x 610 x 991 mm		24 x 24 x 39 in 610 x 610 x 991 mm	
Upper Boom Articulation	0° to 270°		0° to 270°		0° to 270°		0° to 270°		0° to 270°	
Lower Boom Articulation	0° to 125°		0° to 125°		0° to 125°		0° to 125°		0° to 125°	
Rotation	Continuous		Continuous		Continuous		Continuous		Continuous	

\*Based on 40-inch (1016 mm) Chassis Frame Height

Altec Aerial Devices meet or exceed all applicable ANSI Standards as of the date of manufacture. Altec reserves the right to improve models and change specifications without notice or obligation.



## REACH DIAGRAM



Sales: 800-958-2555  
Service: 877-GO ALTEC



Manufacturing and Service Facilities Located  
Throughout the United States and Canada  
[www.altec.com](http://www.altec.com)

**Altec Industries, Inc.**  
Post Office Box 10264  
Birmingham, Alabama 35202  
Phone 205/991-7733  
Fax 205/991-9993  
[sales@altec.com](mailto:sales@altec.com)