

## Specifications

Max. lifting capacity x working radius	27.5 t x 3.2 m
Boom length	Standard 9m (optional boom: 10m)
	Maximum 30m (optional boom: 31m)
Line speed	Load hoisting & lowering High 80m/min., low 40m/min.
	Boom hoisting & lowering 55m/min. (4th layer of drum)
Swing speed	4.0 rpm
Travel speed	23km/h
Drive	4 x 2 (rear wheel drive)
Min. turning radius	8m
Gradeability	28% (16°)
Engine rated output	150 PS/2,100 rpm (HINO H06C-T)
Total operating weight	28,600kg (with standard boom)
Overall length at travelling	13,400 (44'0")
Overall width at travelling	2,990mm (9'10")
Overall height at travelling	3,560mm (11'8")
Outrigger	X-type
Tire size	11-00-20-16PR(I) x 4 For front and Rear axles

\* Line speed will be changed due to load factor.

## Note:

- All rated lifting loads are based on the machine being on a firm, level and uniformly supporting surface.
- The weight of the hook block, slings or any lifting attachment must be considered as part of the load.  
27.5t hook block ..... 330kg
- All rated lifting loads with outriggers are based on the outriggers being fully extended.  
Machine must be level and fully supported by outriggers.
- All rated lifting loads free-on-wheel are based on proper tire inflation and condition, freely suspended static loads with no allowances for unknown conditions such as operating speeds and others.
- Lifting data table.

Maximum lifting load (tons)	Parts of line
5.5t	1
11.0t	2
16.5t	3
22.0t	4
27.5t	5

## Rated lifting loads [with outriggers, through 360°] (unit: metric tons)

Working radius (m)	Boom length (m)							
	9	12	15	18	21	24	27	30
3.2	27.5							
3.5	25.8							
4.0	23.5	23.0	23.0					
4.5	21.4	20.9	20.8					
5.0	19.5	19.0	18.8	18.0	5.5mX16.0			
6.0	16.0	15.6	15.5	15.3	15.1	14.5		
7.0	13.5	13.4	13.3	13.2	13.1	13.0	12.9	
8.0	11.0	10.9	10.8	10.7	10.6	10.5	10.4	10.3
9.0		9.2	9.1	9.0	8.9	8.8	8.7	8.6
10.0		7.8	7.7	7.6	7.5	7.4	7.3	7.2
12.0			5.8	5.7	5.6	5.5	5.4	5.3
14.0			4.6	4.5	4.4	4.3	4.2	4.1
16.0				3.7	3.6	3.5	3.4	3.3
18.0					3.0	2.9	2.8	2.7
20.0						2.5	2.4	2.3
22.0							2.0	1.9
24.0							1.7	1.6
26.0								1.4
27.0								1.3

## [free-on-wheel, through 360°]

(unit: metric tons)

Working radius (m)	Boom length (m)							
	9	12	15	18	21	24	27	30
3.5	11.25	10.20						
4.0	9.15	9.10	9.05					
4.5	7.70	7.65	7.60	7.55				
5.0	6.65	6.60	6.55	6.50	6.45	5.5mX5.55		
6.0	5.15	5.10	5.05	5.00	4.95	4.90	4.85	
7.0	4.25	4.15	4.10	4.05	4.00	3.95	3.90	3.85
8.0	3.50	3.45	3.40	3.35	3.30	3.25	3.20	3.15
9.0		2.90	2.85	2.80	2.75	2.70	2.65	2.60
10.0		2.55	2.45	2.40	2.35	2.30	2.25	2.20
12.0			1.90	1.85	1.80	1.75	1.70	1.65
14.0			1.50	1.45	1.40	1.35	1.30	1.25
16.0				1.15	1.10	1.05	1.00	0.95

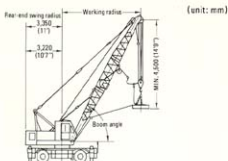
## [carrying, through 360°] (unit: metric tons)

Working radius (m)	Boom length (m)			
	9	12	15	18
3.5	5.65	5.60		
4.0	4.60	4.55	4.50	
4.5	3.85	3.80	3.75	3.70
5.0	3.30	3.25	3.20	3.15
6.0	2.60	2.55	2.50	2.45
7.0	2.10	2.05	2.00	1.95
8.0	1.75	1.70	1.65	1.60
9.0		1.45	1.40	1.35
10.0		1.30	1.25	1.20

## Note:

- Proper tire air pressure is 7.0kgf/cm<sup>2</sup>.
- Travelling speed must be slower than 5.0km/h.
- Axle-locks must be locked.
- The lifting height of load should be kept lower and with no allowance for swing.

## Lifting magnet (option)



### Rated lifting loads [with outriggers, through 360°]

(unit: metric tons)

Working radius (m)	3.2	3.5	4	4.5	5	6	7	8	9	10	12	14	16
Boom length (m)	9	24.7	23.3	21.1	19.3	17.5	14.4	12.1	9.9				
12		20.7	18.8	17.1	14.0	12.0	9.8	8.3	7.0				
15			20.7	18.7	16.9	13.9	11.9	9.7	8.2	6.9	5.1	4.1	
18					16.2	13.8	11.8	9.6	8.1	6.8	5.0	4.0	3.3

Note: 1. The weight of hook block, magnet, slings or any lifting attachment must be considered as part of the load.

27.5t hook block ..... 0.33t  
15.0t hook block ..... 0.30t

- Maximum allowable boom length is 18m with outriggers fully extended.
- Lifting magnet work free-on-wheel is not allowed.
- The rear part of the machine will be changed from that of crane specifications.

### Specifications

Magnet size	1,500mm dia.		
Max. lifting capacity x working radius	24.7 x 3.2m		
Boom length	9m (optional boom: 10m)		
Maximum	18m (optional boom: 19m)		
* Line speed	Load hoisting & lowering	High 88m/min., low 34m/min.	Rope dia. 20mm dia. 14mm dia.
	Boom hoisting & lowering	47m/min. (4th layer of drum)	
Swing speed	3.4 rpm		
Rated engine revolution	1,800 rpm		

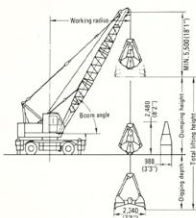
\* Line speed will be changed due to load factor.

### Magnet specifications

Diameter	1,500mm dia.	
Weight	2,700kg	
Voltage	DC-220V	
Generator output	16.5kW (50% ED)	
Lifting loads	Pig iron	1,300 ~ 1,900kg
	General scrap	1,200 ~ 1,900kg
	Punched scrap	550 ~ 900kg

## Clamshell (option)

(unit: mm)



### Specifications

Bucket capacity	0.8m³ GP, 0.6m³ HD, 1.0m³ WR, 1.25m³ WR		
Max. lifting capacity	5.0t (Note: 1)		
Boom length	9 ~ 18m (optional boom: 10 ~ 19m)		
Max. lifting height	37.0m (digging depth + dumping height)		
Tagline	Hydraulic type		
* Line speed	Load hoisting & lowering	High 80m/min., low 40m/min.	Rope dia. 20mm dia. 14mm dia.
	Bucket opening & closing		
	Boom hoisting & lowering	55m/min. (4th layer of drum)	
Swing speed	4.0 rpm		

\* Line speed will be changed due to load factor.

### Clamshell bucket specifications

Classification	Model	Capacity (m³)	Weight (t)	Parts of line (bucket opening & closing)	Purpose
Standard	GP	0.8	2.1	6	General purpose
Option	HD	0.6	3.0		Heavy duty work
Option	WR	1.0	2.0		Wide rehandling
Option	WR	1.25	1.6		

### Working range and allowable loads [with outriggers, through 360°]

Boom length (m)	9				12				15				18				
Boom angle	35°	45°	55°	66°	35°	45°	55°	66°	35°	45°	55°	66°	35°	45°	55°	66°	
Working radius (m)	8.4	7.5	6.3	5.0	10.9	9.6	8.0	6.2	13.3	11.7	9.7	7.5	15.8	13.8	11.5	8.8	
Rated lifting load (t)	5.0	5.0	5.0	5.0	5.0	5.0	5.0	5.0	5.0	4.4	5.0	5.0	3.3	4.1	5.0	5.0	
Max. dumping height (m)	1.4	2.6	3.7	4.5	3.1	4.8	6.2	7.2	4.8	6.9	8.6	9.9	6.5	9.0	11.2	12.7	
Max. digging depth (m)	36				36	33	32	31	30	29	27	25	24	24	22	20	18

- Maximum weight of clamshell bucket and contents must not exceed 5 tons.
- Maximum allowable boom length is 18m with outriggers fully extended.
- Clamshell bucket work free-on-wheel is not allowed.

- Maximum dumping height shown is applied to 0.8m³ standard GP bucket.
- Bucket is selected in the above model.
- Boom point is furnished with the sheaves for clamshell use.

### Standard equipment

9m standard boom  
27.5ton hook block with 2 sheaves  
Engine tachometer  
Hour meter  
Water temperature gauge  
Oil pressure gauge  
Ammeter  
Work lights  
Room light  
Power steering

X-type hydraulic outrigger  
Axle locks  
Steering direction correcting switch  
All wheel brake at work  
Hook safety latch  
Swing alarm  
Car heater (hot water type)  
Front wiper  
Rear view mirrors  
Electric fuel oil pump

Alarming buzzer  
Level gauge  
Car radio  
Sun visor  
Ash tray  
Cigarette lighter  
Reclining seat  
Standard lightings on chassis  
Safety wire netting on inner boom

### Optional equipment

10m folding standard boom  
3m insert boom with pendant ropes  
6m insert boom with pendant ropes  
15ton hook block  
Moment limiter  
Rope guide roller for insert boom  
Clamshell bucket  
Hydraulic tagline  
Lifting magnet