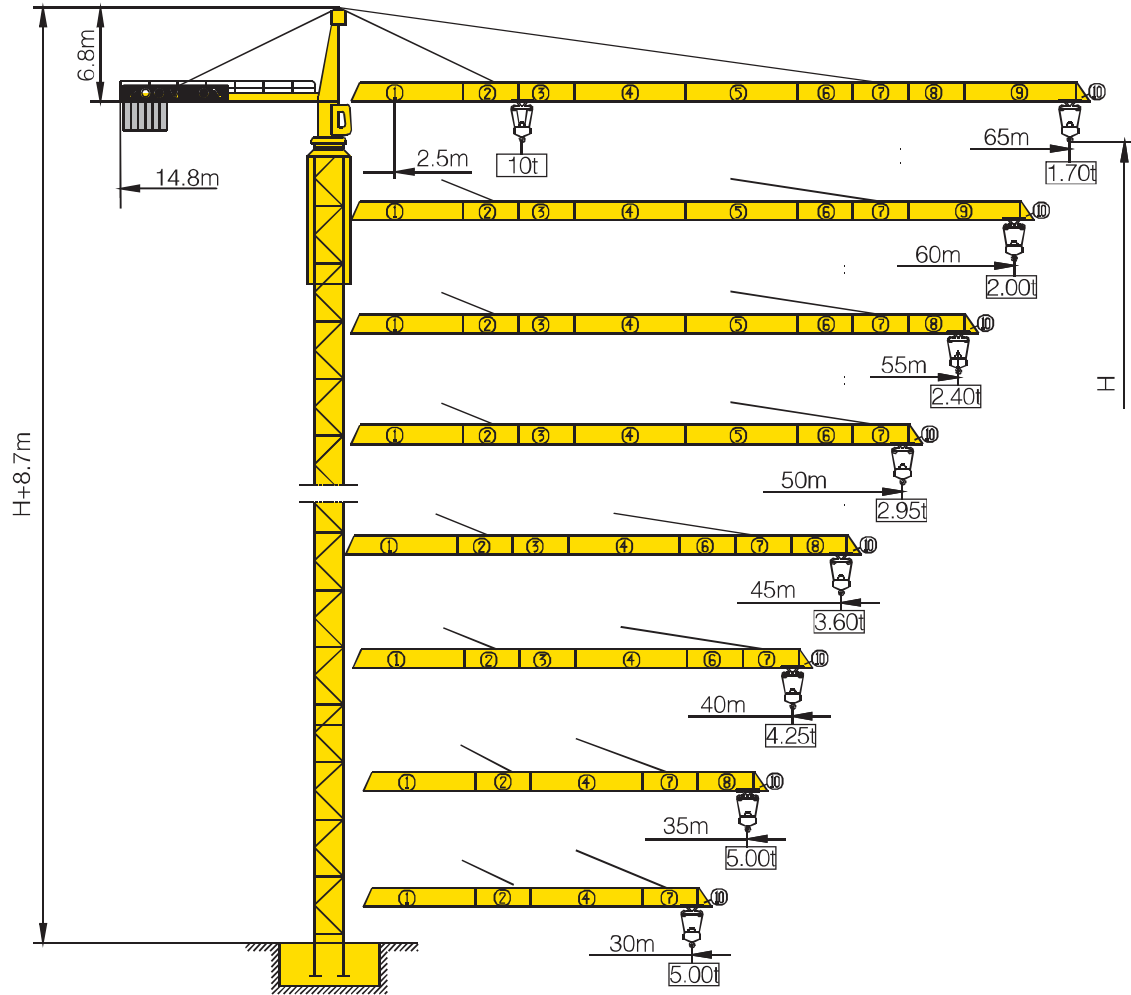


# TC6517B-10



## Counter-jib ballast

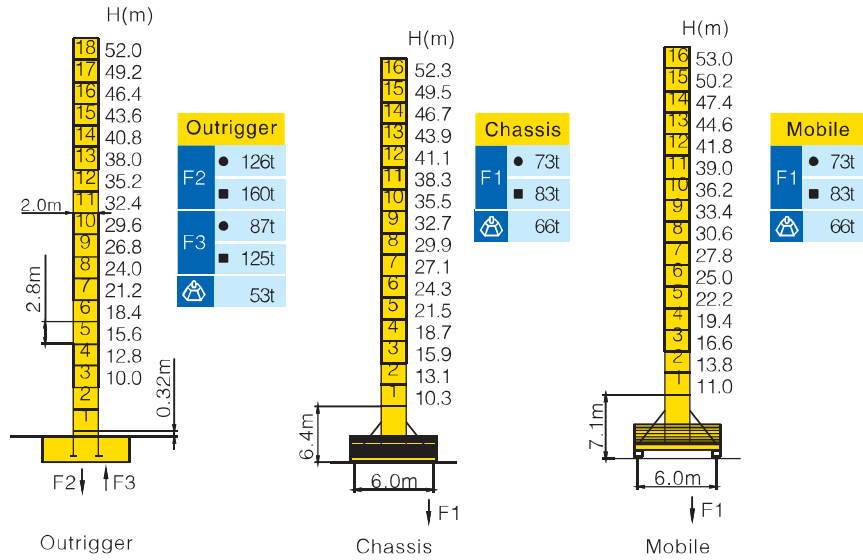
			(Kg)	PHZ3000	PHZ2500	PHZ2000	PHZ1500
65m	14.8m	24000	6	1	1	1	
60m	14.8m	21500	6	0	1	1	
55m	14.8m	20000	6	0	1	0	
50m	14.8m	18500	5	0	1	1	
45m	14.8m	16500	5	0	0	1	
40m	14.8m	14500	4	1	0	0	
35m	14.8m	12000	2	1	1	1	
30m	14.8m	10000	2	1	0	1	

## Working Height(m) @ Wall-tie Location(m)

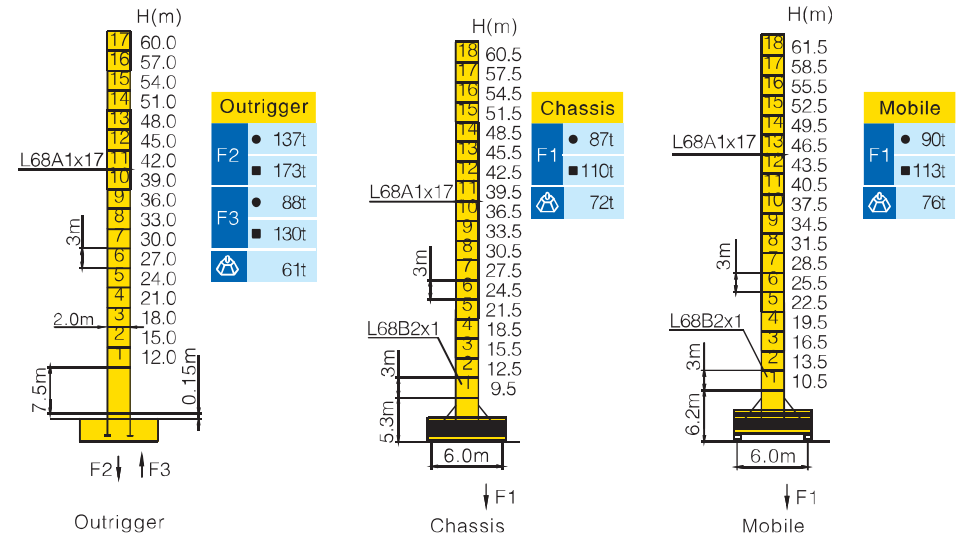
Model Detail	Mast Code	Wall-tie #1	Wall-tie #2	Wall-tie #3	Wall-tie #4	Wall-tie #5	Wall-tie #6	Wall-tie #7
TC6517B-10	MQ1	77.2 @ 37	102.4 @ 62.2	124.8 @ 87.4	144.4 @ 109.8	164 @ 129.4	183.6 @ 149	200 @ 168.6
TC6517B-10E	L68A1	87 @ 47	111 @ 74	135 @ 98	159 @ 122	183 @ 146	200 @ 170	—

## Masts Reactions

TC6517B-10



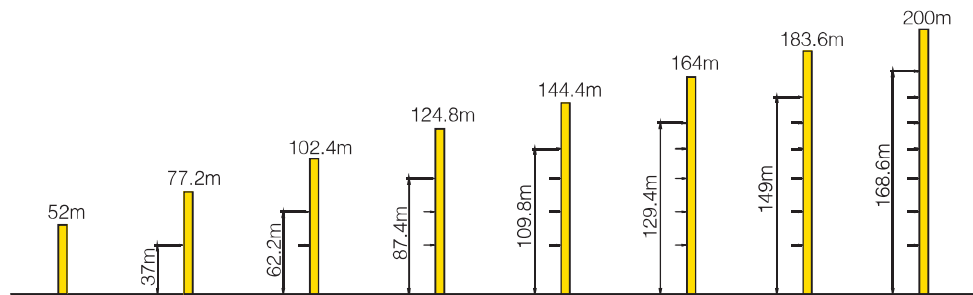
TC6517B-10E



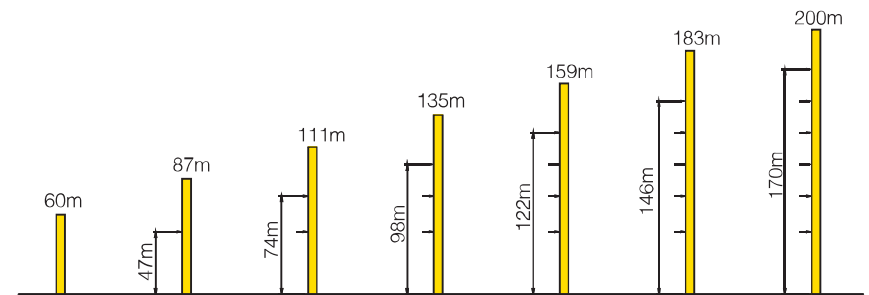
● Reactions in service ■ Reactions out of service  
 ⊕ Without load and ballast with longest jib and maximum height  
 ⊕ For more erecting solutions, consult us!

## Anchorage


TC6517B-10




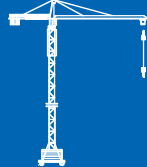




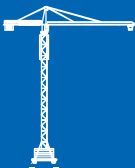


TC6517B-10E



## Load diagrams

		Max. Capacity m/t	15.0	17.5	20.0	22.5	25.0	27.5	30.0	32.5	35.0	37.5	40.0	42.5	45.0	47.5	50.0	52.5	55.0	57.5	60.0	62.5	65.0
65m (R=66.75)	⌋	2.5-28.0m 5t	5.00						4.70	4.27	3.90	3.58	3.30	3.05	2.83	2.64	2.46	2.31	2.16	2.03	1.91	1.80	1.70
	⌋⌋	2.5-15.6m 10t	10.0	8.74	7.48	6.51	5.74	5.12	4.60	4.17	3.80	3.48	3.20	2.95	2.73	2.54	2.36	2.21	2.06	1.93	1.81	1.70	1.60
60m (R=61.75)	⌋	2.5-28.9m 5t	5.00						4.88	4.43	4.05	3.72	3.43	3.18	2.95	2.75	2.57	2.41	2.26	2.12	2.00		
	⌋⌋	2.5-16.1m 10t	10.0	9.06	7.75	6.75	5.96	5.32	4.78	4.33	3.95	3.62	3.33	3.08	2.85	2.65	2.47	2.31	2.16	2.02	1.90		
55m (R=56.75)	⌋	2.5-30.7m 5t	5.00						4.68	4.28	3.93	3.63	3.36	3.13	2.91	2.73	2.55	2.40					
	⌋⌋	2.5-16.8m 10t	10.0	9.52	8.15	7.11	6.28	5.60	5.05	4.58	4.18	3.83	3.53	3.26	3.03	2.81	2.63	2.45	2.30				
50m (R=51.75)	⌋	2.5-32.6m 5t	5.00						4.60	4.23	3.91	3.63	3.37	3.15	2.95								
	⌋⌋	2.5-17.7m 10t	10.00	8.73	7.62	6.74	6.02	5.42	4.92	4.50	4.13	3.81	3.53	3.27	3.05	2.85							
45m (R=46.75)	⌋	2.5-34.3m 5t	5.00						4.89	4.50	4.16	3.86	3.60										
	⌋⌋	2.5-18.7m 10t	10.00	9.25	8.08	7.15	6.39	5.77	5.24	4.79	4.40	4.06	3.76	3.50									
40m (R=41.75)	⌋	2.5-34.9m 5t	5.00						4.99	4.59	4.25												
	⌋⌋	2.5-19.0m 10t	10.00	9.43	8.24	7.29	6.52	5.88	5.35	4.89	4.49	4.15											
35m (R=36.75)	⌋	2.5-35.0m 5t	5.00																				
	⌋⌋	2.5-19.2m 10t	10.00	9.54	8.33	7.37	6.60	5.95	5.41	4.95													
30m (R=31.75)	⌋	2.5-30.0m 5t	5.00																				
	⌋⌋	2.5-19.4m 10t	10.00	9.68	8.46	7.49	6.70	6.05															

## Mechanisms

			Hoisting		QE10100E2		
	Slewing	HVV95F.130	 55/55 kW	V		2.5t	100 m/min
	0~0.7 r/min	2×95 Nm				5t	50 m/min
	Trolleying	BP55B	 540m ⓪ ( 6 layers )	IV		5t	50 m/min
	0~55 m/min	5.5 kW				10t	25 m/min
	Travelling	ZA52A-D ZC52A-D	⓪ Consult us If overtop			5t	50 m/min
	25/12.5 m/min	2×5.2 kW				10t	25 m/min
	380V(+10%~10%) 50Hz		71.5+2×5.2kW				

For more mechanisms optional, consult us!