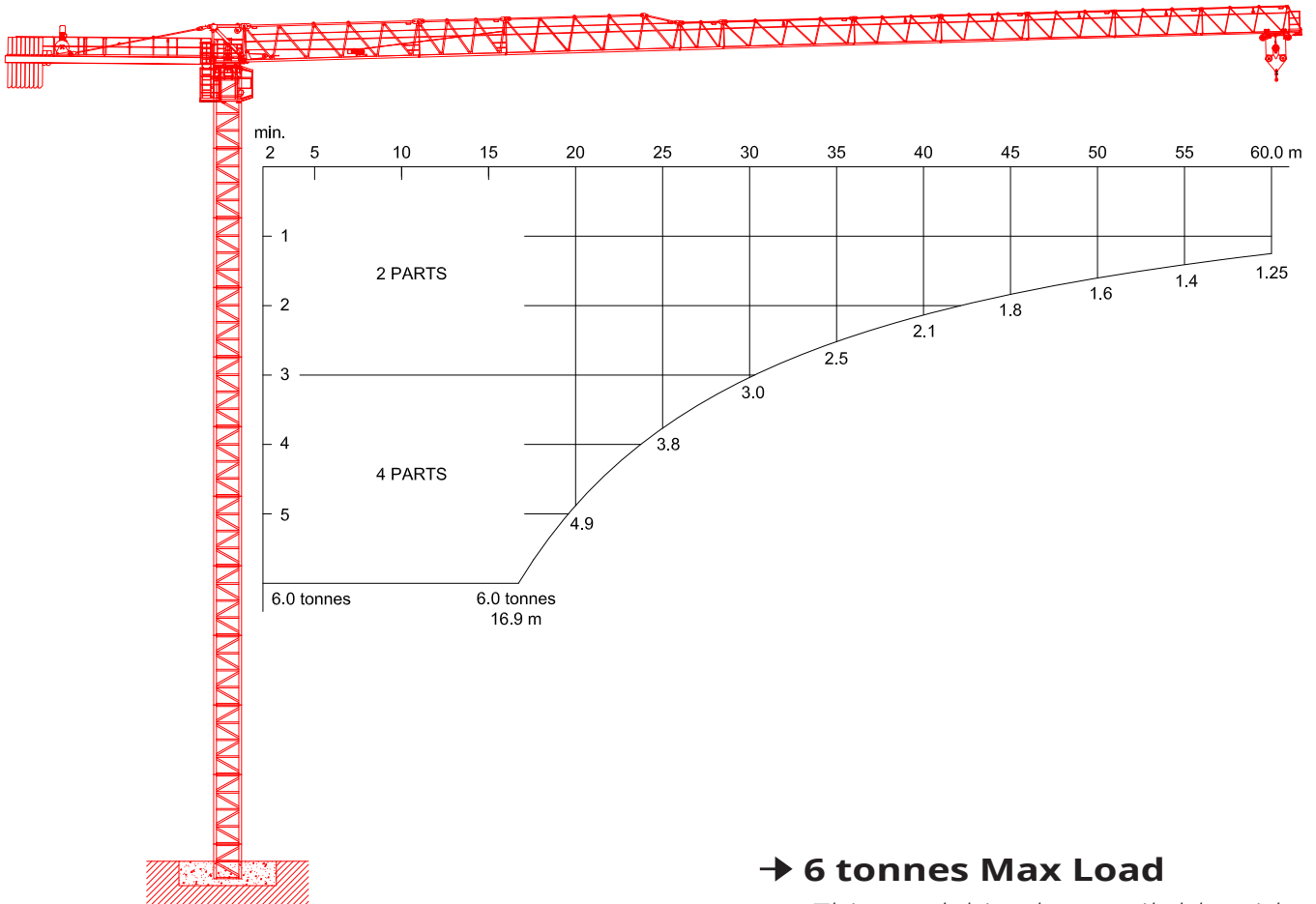




# KROLL CRANES



→ **6 tonnes Max Load**

*This model is also available with:  
8 tonnes Load Chart*

F.E.M 1.001-HC1/A3/E3

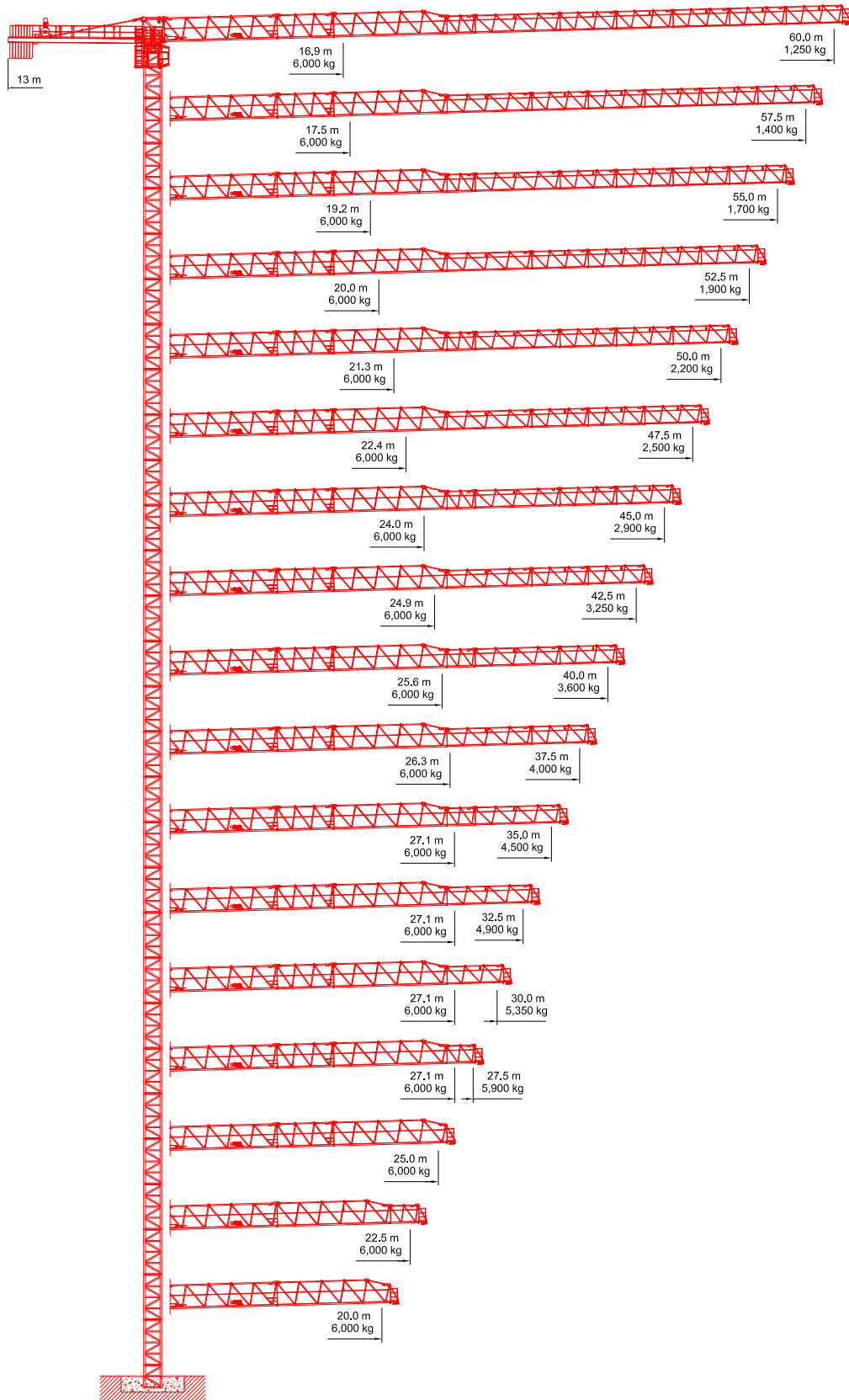


## FLAT TOP TOWER CRANE

# K130F

6 tonnes Max Load



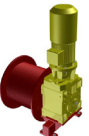

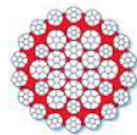
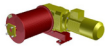

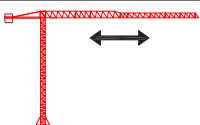


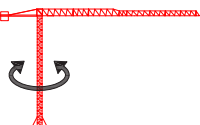


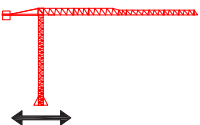
# JIB CONFIGURATIONS





# LOAD CHARTS

Radius	Jib Length															
	60.0 m		55.0 m		50.0 m		45.0 m		40.0 m		35.0 m		30.0 m		25.0 m	
	4 parts	2 parts	4 parts	2 parts	4 parts	2 parts	4 parts	2 parts	4 parts	2 parts	4 parts	2 parts	4 parts	2 parts	4 parts	2 parts
[m]	[kg]	[kg]	[kg]	[kg]	[kg]	[kg]	[kg]	[kg]	[kg]	[kg]	[kg]	[kg]	[kg]	[kg]	[kg]	[kg]
14.0	6,000	3,000	6,000	3,000	6,000	3,000	6,000	3,000	6,000	3,000	6,000	3,000	6,000	3,000	6,000	3,000
15.0	6,000	3,000	6,000	3,000	6,000	3,000	6,000	3,000	6,000	3,000	6,000	3,000	6,000	3,000	6,000	3,000
16.0	6,000	3,000	6,000	3,000	6,000	3,000	6,000	3,000	6,000	3,000	6,000	3,000	6,000	3,000	6,000	3,000
17.0	5,940	3,000	6,000	3,000	6,000	3,000	6,000	3,000	6,000	3,000	6,000	3,000	6,000	3,000	6,000	3,000
18.0	5,560	3,000	6,000	3,000	6,000	3,000	6,000	3,000	6,000	3,000	6,000	3,000	6,000	3,000	6,000	3,000
19.0	5,220	3,000	6,000	3,000	6,000	3,000	6,000	3,000	6,000	3,000	6,000	3,000	6,000	3,000	6,000	3,000
20.0	4,920	3,000	5,740	3,000	6,000	3,000	6,000	3,000	6,000	3,000	6,000	3,000	6,000	3,000	6,000	3,000
21.0	4,650	3,000	5,430	3,000	6,000	3,000	6,000	3,000	6,000	3,000	6,000	3,000	6,000	3,000	6,000	3,000
22.0	4,410	3,000	5,150	3,000	5,790	3,000	6,000	3,000	6,000	3,000	6,000	3,000	6,000	3,000	6,000	3,000
23.0	4,180	3,000	4,890	3,000	5,510	3,000	6,000	3,000	6,000	3,000	6,000	3,000	6,000	3,000	6,000	3,000
24.0	3,980	3,000	4,660	3,000	5,250	3,000	6,000	3,000	6,000	3,000	6,000	3,000	6,000	3,000	6,000	3,000
25.0	3,790	3,000	4,440	3,000	5,010	3,000	5,730	3,000	6,000	3,000	6,000	3,000	6,000	3,000	6,000	3,000
26.0	3,620	3,000	4,250	3,000	4,790	3,000	5,480	3,000	5,890	3,000	6,000	3,000	6,000	3,000		
27.0	3,460	3,000	4,060	3,000	4,580	3,000	5,250	3,000	5,650	3,000	6,000	3,000	6,000	3,000		
28.0	3,320	3,000	3,900	3,000	4,400	3,000	5,040	3,000	5,420	3,000	5,800	3,000	5,780	3,000		
29.0	3,180	3,000	3,740	3,000	4,220	3,000	4,840	3,000	5,210	3,000	5,570	3,000	5,560	3,000		
30.0	3,060	3,000	3,590	3,000	4,060	3,000	4,660	3,000	5,010	3,000	5,360	3,000	5,350	3,000		
31.0	2,940	2,940	3,460	3,000	3,910	3,000	4,480	3,000	4,830	3,000	5,170	3,000				
32.0	2,830	2,830	3,330	3,000	3,760	3,000	4,320	3,000	4,660	3,000	4,980	3,000				
33.0	2,720	2,720	3,210	3,000	3,630	3,000	4,170	3,000	4,500	3,000	4,810	3,000				
34.0	2,620	2,620	3,100	3,000	3,510	3,000	4,030	3,000	4,340	3,000	4,650	3,000				
35.0	2,530	2,530	2,990	2,990	3,390	3,000	3,900	3,000	4,200	3,000	4,500	3,000				
36.0	2,450	2,450	2,890	2,890	3,280	3,000	3,770	3,000	4,070	3,000						
37.0	2,360	2,360	2,800	2,800	3,170	3,000	3,650	3,000	3,940	3,000						
38.0	2,290	2,290	2,710	2,710	3,070	3,000	3,540	3,000	3,820	3,000						
39.0	2,210	2,210	2,620	2,620	2,980	2,980	3,440	3,000	3,710	3,000						
40.0	2,140	2,140	2,540	2,540	2,890	2,890	3,340	3,000	3,600	3,000						
41.0	2,080	2,080	2,470	2,470	2,810	2,810	3,240	3,000								
42.0	2,020	2,020	2,400	2,400	2,730	2,730	3,150	3,000								
43.0	1,960	1,960	2,330	2,330	2,650	2,650	3,060	3,000								
44.0	1,900	1,900	2,260	2,260	2,580	2,580	2,980	2,980								
45.0	1,840	1,840	2,200	2,200	2,510	2,510	2,900	2,900								
46.0	1,790	1,790	2,140	2,140	2,440	2,440										
47.0	1,740	1,740	2,080	2,080	2,380	2,380										
48.0	1,700	1,700	2,030	2,030	2,310	2,310										
49.0	1,650	1,650	1,970	1,970	2,260	2,260										
50.0	1,610	1,610	1,920	1,920	2,200	2,200										
51.0	1,560	1,560	1,880	1,880												
52.0	1,520	1,520	1,830	1,830												
53.0	1,480	1,480	1,780	1,780												
54.0	1,450	1,450	1,740	1,740												
55.0	1,410	1,410	1,700	1,700												
56.0	1,380	1,380														
57.0	1,340	1,340														
58.0	1,310	1,310														
59.0	1,280	1,280														
60.0	1,250	1,250														

<b>HOIST WINCH</b>  <b>MOTOR</b> 22 kW	<b>2-PARTS</b> 		<b>4-PARTS</b> 		
		Load  0 - 0.8 t 0.8 - 1.5 t 1.5 - 3.0 t	Max. Speed  96 m/min 66 m/min 36 m/min	Load  0 - 1.6 t 1.6 - 3.0 t 3.0 - 6.0 t	Max. Speed  48 m/min 33 m/min 18 m/min
	<b>HOIST DRUM</b>  <b>CAPACITY</b> 600 m / 7 layers			<b>HOIST WIRE</b> Diameter 12 mm Safety Factor 5 MBL 100 kN	
	<b>TROLLEY WINCH</b>  <b>MOTOR</b> 4 kW			<b>TROLLEY DRUM</b>  <b>CAPACITY</b> 60 m / 1 Layer	
<b>TROLLEY SPEEDS</b> 			<b>TROLLEY WIRE</b> Diameter 7 mm Safety Factor 5 MBL 40 kN		
	<b>SLEW DRIVE</b>  <b>Motor</b> 1 x 7 kW			<b>POWER</b>  <b>SUPPLY</b> 400 - 480 V, 50/60 Hz	
<b>SLEW SPEEDS</b> 			Consumption 35 kVA Main Fuse 50 A Recommended Generator Size 100 kVA		
	<b>UNDERCARRIAGE</b>  <b>Motor</b> 2 x 5.5kW			<b>SUPPLY CABLE</b> Cable Length 0 - 175 m Cable Type 4 x 10 mm <sup>2</sup> 175 - 250 m 4 x 16 mm <sup>2</sup>	
<b>TRAVEL SPEEDS</b> 					
All motion controls are completely stepless ensuring smooth and jerk-free operation. Creeping speed down to 0.5% of maximum speed.			All specifications shown in the tables are for the standard version of K130F. For special requirements regarding load charts or drive speeds, please contact Krøll Cranes A/S.		

F.E.M 1.001-HC1/A3/E3

EN 14439:2009-C25



All data is subject to alteration.



## KRØLL CRANES



KRØLL CRANES A/S  
Nordkranvej 2  
DK-3540 Lyngø  
Denmark

Tel: +45 48 18 74 00  
Mail: [info@krollcranes.dk](mailto:info@krollcranes.dk)  
Web: [www.krollcranes.dk](http://www.krollcranes.dk)

