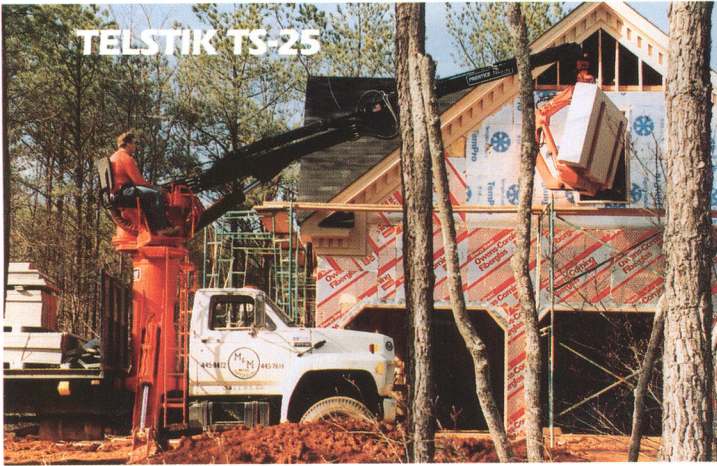


PRENTICE® TELSTIK™ TS-25, TS-29 & TS-33 SPECIFICATIONS



MAXIMUM MAIN BOOM LIFT CAPACITY

Maximum foot pound rating 120,000 ft. lbs. (Approx.)
System pressure 2500 psi

NET PAYLOAD CAPACITY (After deducting fork weight)
Shaded area of Boom Chart below: 4,000 lbs. max.
Unshaded area of Boom Chart below: 3,400 lbs. max.

MAXIMUM MAIN BOOM LIFT CAPACITY

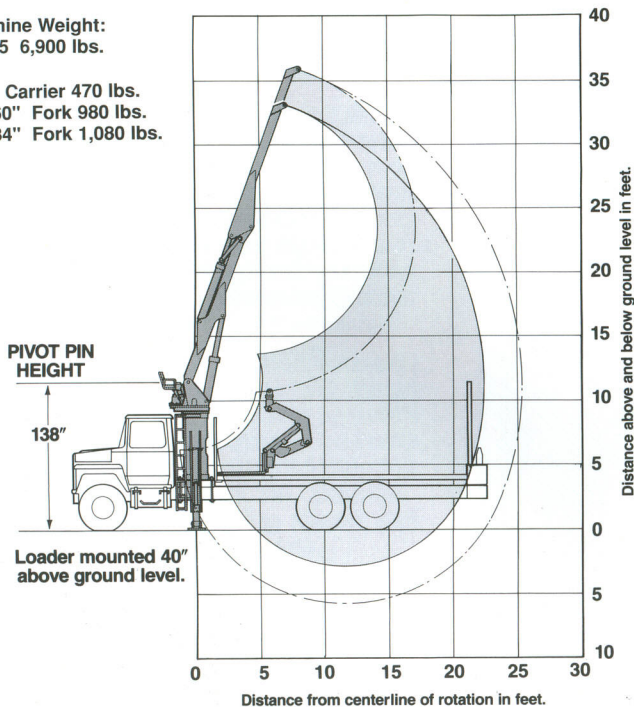
Maximum foot pound rating 156,000 ft. lbs. (Approx.)
System pressure 2500 psi

NET PAYLOAD CAPACITY (After deducting fork weight)
Shaded area of Boom Chart below: 4,000 lbs. max.
Unshaded area of Boom Chart below: 3,400 lbs. max.

ACTION OF TS-25 TELSTIK KNUCKLE BOOM (22'-4", Normal; 25'-4" With Boom Extended)

Machine Weight:
TS-25 6,900 lbs.

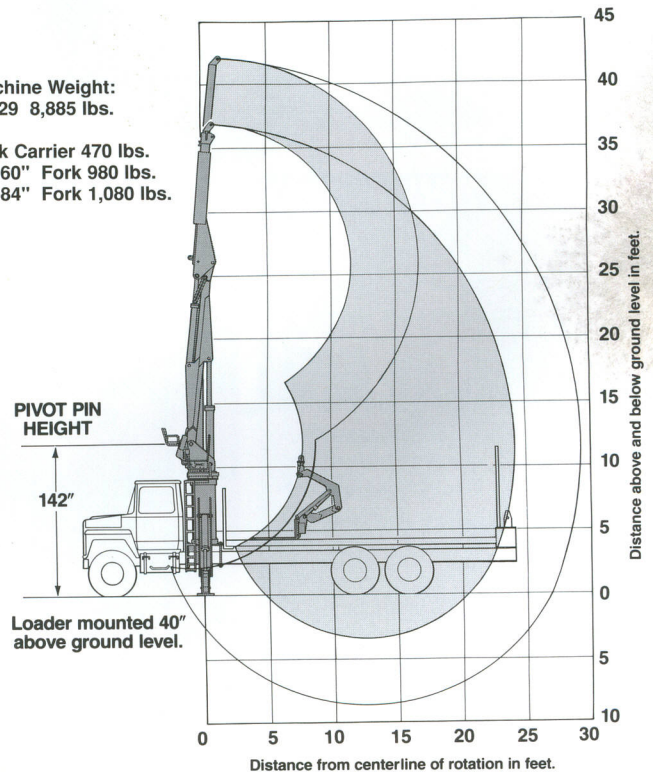
Fork Carrier 470 lbs.
CS-60" Fork 980 lbs.
CS-84" Fork 1,080 lbs.



ACTION OF TS-29 TELSTIK KNUCKLE BOOM (24'-2", Normal; 29'-6" with Boom Extended)

Machine Weight:
TS-29 8,885 lbs.

Fork Carrier 470 lbs.
CS-60" Fork 980 lbs.
CS-84" Fork 1,080 lbs.



Figures shown here represent maximum hydraulic lifting force available at boom tip for each working radius at various elevations. Figures are maximum possible. Actual lifting capacities will vary with applications and actual worksite conditions. Deduct weight of grapple for payload.



**TELSTIK
TS-33**

MAXIMUM MAIN BOOM LIFT CAPACITY

Maximum foot pound rating 156,000 ft. lbs. (Approx.)
System pressure 2500 psi

NET PAYLOAD CAPACITY (After deducting fork weight)
Shaded area of Boom Chart below: 4,000 lbs. max.
Unshaded area of Boom Chart below: 3,400 lbs. max.

ACTION OF TS-33 TELSTIK KNUCKLE BOOM (25'-6", Normal; 32'-10" with Boom Extended)

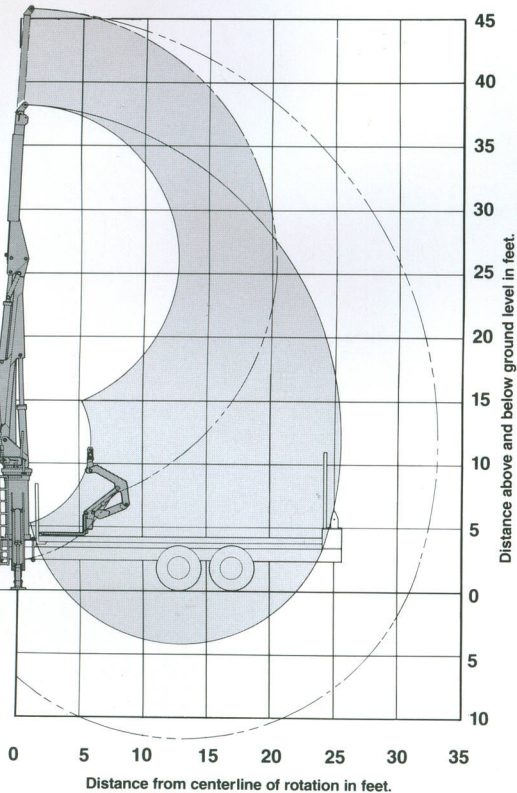
Machine Weight:
TS-33 9,180 lbs.

Fork Carrier 470 lbs.
CS-60" Fork 980 lbs.
CS-84" Fork 1,080 lbs.

PIVOT PIN
HEIGHT

142"

Loader mounted 40"
above ground level.



STANDARD EQUIPMENT ON ALL TELSTIK MODELS

BOOM. High-tensile steel Power-Link Knuckle Boom with telescopic Stick for extra reach.

STABILIZERS. Folding type with 15 ft. spread at grade. Stabilizers are individually controlled from valve bank on operator's platform.

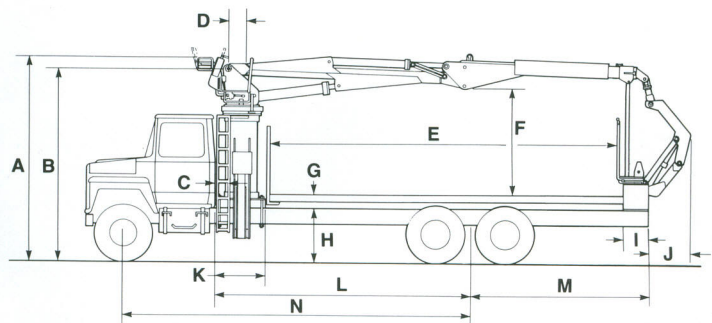
STRUCTURALS. Rotating operator's platform is mounted on right side of boom and features dual ladders for easy access regardless of boom position. Ring and pinion swing system is driven through planetary gearbox by piston hydraulic motor. Frame is welded high-tensile steel consisting of a 22" diameter rolled steel column over a 35³/₄" x 36" sub frame.

HYDRAULICS. Bi-rotational gear-type dual tandem pump delivers 21 + 24 GPM at 1200 RPM. Has 47-gallon hydraulic oil reservoir with reusable magnetic strainers and built-in return-line filters, also with replaceable elements. Flow control valves regulate speed of boom swing, fork rotation and tilt functions. All hydraulic cylinders are Prentice-built with bolt-on heads for easy maintenance.

ATTACHMENTS. Two sizes of Stacked Materials Forks are available, one with 60" width, the other with 84" width. Both are adjustable down to 18" and have a self-balancing feature that automatically holds the load level as fork tines center themselves under the lift point.

BASIC TELSTIK DIMENSIONS

Minimum carrier is a live-tandem truck with frame RBM of 2,500,000 in. lbs. per rail; front axle 12,000 lbs.; GVW rating 52,000 lbs. (32,000 lbs. for Model TS-25). Actual dimensions will vary with truck selected.



All dimensions in inches.

	TS-25	TS-29	TS-33
A	149	157 ¹ / ₂	157 ¹ / ₂
B	138	142	142
C	10 (Min)	10 (Min)	10 (Min)
D	6	11	11
E	228	252	264
F	77 ¹ / ₂	81 ³ / ₄	81 ³ / ₄
G	10 ¹ / ₂	10 ¹ / ₂	10 ¹ / ₂
H	40	40	40
I	18	18	18
J	30	30	30
K	38 ¹ / ₂	38 ¹ / ₂	38 ¹ / ₂
L	162	185	198
M	129	129	129
N	228	252	264