



TMS865

88 ft. (26.8 m)

JIB CAPACITIES

(FULL POWER AND POWER PINNED BOOMS)

RATED LIFTING CAPACITIES ON OUTRIGGERS - 360° POUNDS

Loaded Main Boom Angle	46 ft. JIB CAPACITIES						60 ft. JIB CAPACITIES						74 ft. JIB CAP.			
	5° OFFSET		17° OFFSET		30° OFFSET		5° OFFSET		17° OFFSET		30° OFFSET		5° OFFSET		17° OFF	
	Ref.* Rad.	Load lbs.**	Ref. Rad.	Load lbs.	Ref. Rad.	Load lbs.	Ref. Rad.	Load lbs.	Ref. Rad.	Load lbs.	Ref. Rad.	Load lbs.	Ref. Rad.	Load lbs.	Ref. Rad.	L
80°	32.0	14,000	41.0	11,950	49.0	8,480	36.3	10,600	48.2	8,160	58.0	5,680	39.8	8,160	53.7	5,
77.5	38.4	13,350	47.2	11,550	55.2	8,080	43.3	9,970	54.5	7,790	64.7	5,320	47.5	7,620	60.8	5,
75	44.9	12,800	53.2	11,150	61.2	7,690	50.3	9,490	60.9	7,450	71.3	5,020	55.1	7,090	67.8	5,
72.5	51.2	12,250	59.6	10,300	67.2	7,350	57.2	8,930	67.5	7,130	77.8	4,760	62.6	6,620	75.6	4,
70	57.5	9,930	65.4	8,390	72.9	7,020	63.9	8,380	74.1	6,830	84.2	4,540	69.9	6,200	82.5	4,
67.5	63.7	7,970	71.4	6,870	78.6	6,100	70.6	6,710	80.6	5,610	90.3	4,340	77.2	5,670	89.5	4,
65	69.7	6,450	77.2	5,640	84.1	5,080	77.1	5,380	86.8	4,580	96.3	4,030	84.2	4,500	95.8	3,
62.5	75.6	5,240	82.8	4,640	89.5	4,220	83.4	4,320	92.7	3,730	102.1	3,310	91.2	3,560	102.5	2,
60	81.3	4,250	88.2	3,800	94.7	3,490	89.6	3,460	98.6	3,010	107.8	2,700	97.9	2,790	109.2	2,
55	92.4	2,750	99.0	2,490	104.4	2,320	101.4	2,130	110.0	1,870	118.3	1,700	110.9	1,590	121.3	1,
50	102.7	1,660	108.2	1,520	113.4	1,420	112.5	1,160	121.9	1,010	128.1	920				

*Reference Radius (feet) refers to fully extended boom and appropriate jib length.
**Capacities at loaded main boom angle.

KILOGRAMS

Loaded Main Boom Angle	14.0 m JIB CAPACITIES						18.3 m JIB CAPACITIES						22.6 m JIB CAP.			
	5° OFFSET		17° OFFSET		30° OFFSET		5° OFFSET		17° OFFSET		30° OFFSET		5° OFFSET		17° OFF	
	Ref.* Rad.	Load kg**	Ref. Rad.	Load kg	Ref. Rad.	Load kg	Ref. Rad.	Load kg	Ref. Rad.	Load kg	Ref. Rad.	Load kg	Ref. Rad.	Load kg	Ref. Rad.	L
80°	9.8	6,350	12.5	5,420	14.9	3,845	11.1	4,805	14.7	3,700	17.7	2,575	12.1	3,700	16.4	2,
77.5	11.7	6,055	14.4	5,235	16.8	3,665	13.2	4,520	16.6	3,530	19.7	2,410	14.5	3,455	18.5	2,
75	13.7	5,805	16.2	5,055	18.6	3,485	15.3	4,300	18.6	3,375	21.7	2,275	16.8	3,215	20.7	2,
72.5	15.6	5,555	18.2	4,670	20.5	3,330	17.4	4,050	20.6	3,230	23.7	2,155	19.1	3,000	23.0	2,
70	17.5	4,500	19.9	3,805	22.2	3,180	19.5	3,800	22.6	3,095	25.7	2,055	21.3	2,810	25.1	2,
67.5	19.4	3,615	21.8	3,115	24.0	2,765	21.5	3,040	24.6	2,540	27.5	1,965	23.5	2,570	27.3	1,
65	21.2	2,925	23.5	2,555	25.6	2,300	23.5	2,440	26.5	2,075	29.4	1,825	25.7	2,040	29.2	1,
62.5	23.0	2,375	25.2	2,100	27.3	1,910	25.4	1,955	28.2	1,690	31.1	1,500	27.8	1,610	31.2	1,
60	24.8	1,925	26.9	1,720	28.9	1,580	27.3	1,565	30.0	1,365	32.8	1,220	29.8	1,265	33.3	1,
55	28.2	1,245	30.2	1,125	31.8	1,050	30.9	965	33.5	845	36.1	770	33.8	720	37.0	
50	31.3	750	33.0	685	34.6	640	34.3	525	37.2	455	39.0	415				

*Reference Radius (meters) refers to fully extended boom and appropriate jib length.
**Capacities at loaded main boom angle.
Capacities listed apply to jibs of round tube construction only.

JIB CAPACITY NOTES

- All capacities above the bold line are based on structural strength of jib and do not exceed 66 2/3% of tipping load, in accordance with SAE J-765.
- With Krueger LMI supplied two part lifting service is required; at any other time single line or 2-part line lifting service may be used.
- Rated load is based on loaded main boom angle with reference to ground, regardless of main boom length. (Ref. radius in feet is for fully extended boom 114 ft. (34.6m). The Krueger LMI system will give an accurate radius indication for this condition only.)
WARNING: Operation of this machine with heavier loads than the capacities listed is strictly prohibited. Machine tipping with every jib occurs rapidly and without advance warning.
- 46 ft. (14.0m) JIB **WARNING:** With 46 ft. (14.0m) jib and main boom fully extended, the boom angle must not be less than 50° since loss of stability will occur causing a tipping condition.
60 ft. (18.3m) JIB **WARNING:** With 60 ft. (18.3m) jib and main boom fully extended, the boom angle must not be less than 50°

- since loss of stability will occur causing a tipping condition.
74 ft. (22.6m) JIB **WARNING:** With 74 ft. (22.6m) jib and main boom fully extended, the boom angle must not be less than 55° since loss of stability will occur causing a tipping condition.
88 ft. (26.8m) JIB **WARNING:** With 88 ft. (26.8m) jib and main boom fully extended, the boom angle must not be less than 55° since loss of stability will occur causing a tipping condition.
- JIB ERECTION NOTES:
A. Maximum length of main boom including extended fly for purpose of erecting jib below 30° main boom angle is:
46 ft. (14.0m) JIB - 95 ft. (28.9m)
60 ft. (18.3m) JIB - 86 ft. (26.2m)
74 ft. (22.6m) JIB - 77 ft. (23.5m)
88 ft. (26.8m) JIB - 68 ft. (20.7m)
B. **WARNING:** Do not attempt to erect jib over front of machine, unless boom is fully retracted (fly extended).
 - Capacities listed are with fully extended outriggers only.

46 ft. .
†46 ft.
†60 ft.
†74 ft.
†88 ft.

† Redu

TMS865

88 ft. (26.8 m)

JIB CAPACITIES

(ALL POWER AND POWER PINNED BOOMS)

GROVE®

FULL HYDRAULIC

CARRIER-MOUNTED CRANE

RATED LIFTING CAPACITIES ON OUTRIGGERS - 360°

POUNDS

60 ft. JIB CAPACITIES					74 ft. JIB CAPACITIES					88 ft. JIB CAPACITIES						
OFFSET	17° OFFSET	30° OFFSET	5° OFFSET	17° OFFSET	30° OFFSET	5° OFFSET	17° OFFSET	30° OFFSET	5° OFFSET	17° OFFSET	30° OFFSET	5° OFFSET	17° OFFSET	30° OFFSET		
Load lbs.	Ref. Rad.	Load lbs.	Ref. Rad.	Load lbs.	Ref. Rad.	Load lbs.	Ref. Rad.	Load lbs.	Ref. Rad.	Load lbs.	Ref. Rad.	Load lbs.	Ref. Rad.	Load lbs.	Ref. Rad.	
10,600	48.2	8,160	58.0	5,680	39.8	8,160	53.7	5,840	67.2	4,140	44.2	6,310	59.4	4,050	76.7	2,510
9,970	54.5	7,790	64.7	5,320	47.5	7,620	60.8	5,480	74.2	3,860	52.2	5,750	67.2	3,690	83.9	2,290
9,490	60.9	7,450	71.3	5,020	55.1	7,090	67.8	5,150	81.2	3,600	60.2	5,250	75.2	3,380	91.1	2,090
8,930	67.5	7,130	77.8	4,760	62.6	6,620	75.6	4,850	87.9	3,390	68.1	4,790	83.5	3,100	98.0	1,920
8,380	74.1	6,830	84.2	4,540	69.9	6,200	82.5	4,570	94.5	3,190	75.8	4,370	90.6	2,820	104.8	1,750
6,710	80.6	5,610	90.3	4,340	77.2	5,670	89.5	4,320	100.8	3,020	83.4	3,990	97.7	2,570	114.3	1,610
5,380	86.8	4,580	96.3	4,030	84.2	4,500	95.8	3,730	107.1	2,870	90.9	3,660	105.0	2,340	117.7	1,480
4,320	92.7	3,730	102.1	3,310	91.2	3,560	102.5	2,970	113.0	2,590	98.2	2,970	111.4	2,100	123.8	1,360
3,460	98.6	3,010	107.8	2,700	97.9	2,790	109.2	2,340	118.8	2,050	105.2	2,260	118.2	1,840		
2,130	110.0	1,870	118.3	1,700	110.9	1,590	121.3	1,340	129.7	1,170	118.8	1,170	131.0	940		
1,160	121.9	1,010	128.1	920												

Appropriate jib length.

A6-829-004679

KILOGRAMS

18.3 m JIB CAPACITIES					22.6 m JIB CAPACITIES					26.8 m JIB CAPACITIES						
OFFSET	17° OFFSET	30° OFFSET	5° OFFSET	17° OFFSET	30° OFFSET	5° OFFSET	17° OFFSET	30° OFFSET	5° OFFSET	17° OFFSET	30° OFFSET	5° OFFSET	17° OFFSET	30° OFFSET		
Load kg	Ref. Rad.	Load kg	Ref. Rad.	Load kg	Ref. Rad.	Load kg	Ref. Rad.	Load kg	Ref. Rad.	Load kg	Ref. Rad.	Load kg	Ref. Rad.	Load kg	Ref. Rad.	
4,805	14.7	3,700	17.7	2,575	12.1	3,700	16.4	2,645	20.5	1,875	13.5	2,860	18.1	1,835	23.4	1,135
4,520	16.6	3,530	19.7	2,410	14.5	3,455	18.5	2,485	22.6	1,750	15.9	2,605	20.5	1,670	25.6	1,035
4,300	18.6	3,375	21.7	2,275	16.8	3,215	20.7	2,335	24.7	1,630	18.4	2,380	22.9	1,530	27.8	945
4,050	20.6	3,230	23.7	2,155	19.1	3,000	23.0	2,195	26.8	1,535	20.8	2,170	25.5	1,405	29.9	870
3,800	22.6	3,095	25.7	2,055	21.3	2,810	25.1	2,070	28.8	1,445	23.1	1,980	27.6	1,275	31.9	790
3,040	24.6	2,540	27.5	1,965	23.5	2,570	27.3	1,955	30.7	1,365	25.4	1,805	29.8	1,165	33.9	730
2,440	26.5	2,075	29.4	1,825	25.7	2,040	29.2	1,590	32.6	1,300	27.7	1,660	32.0	1,060	35.9	670
1,955	28.2	1,690	31.1	1,500	27.8	1,610	31.2	1,345	34.4	1,170	29.9	1,345	34.0	950	37.7	615
1,565	30.0	1,365	32.8	1,220	29.8	1,265	33.3	1,060	36.2	925	32.1	1,025	36.0	830		
965	33.5	845	36.1	770	33.8	720	37.0	605	39.5	530	36.2	530	39.9	425		
525	37.2	455	39.0	415												

Appropriate jib length.

A6-829-004680

WEIGHT REDUCTION FOR LOAD HANDLING DEVICES

46 ft. - 146 ft. Boom with	lbs.	kg
146 ft. Erected	12,059	5,470
160 ft. Erected	18,014	8,171
174 ft. Erected	25,077	11,375
188 ft. Erected	33,236	15,076

†Reduction of main boom capacities.

HOOK BLOCK	lbs.	kg
15 Ton, 1 Sheave	580	263
10 Ton Headache Ball	500	227
7½ Ton Headache Ball	300	136
Auxiliary Boom Head	220	100

NOTE: All Load Handling Devices and Boom Attachments are Considered Part of the Load and Suitable Allowances MUST BE MADE for Their Combined Weights. Weights are for Grove furnished equipment.

Loss of stability will occur causing a tipping condition.
(22.6m) JIB WARNING: With 74 ft. (22.6m) jib and main boom fully extended, the boom angle must not be less than 55°.
Loss of stability will occur causing a tipping condition.
(26.8m) JIB WARNING: With 88 ft. (26.8m) jib and main boom fully extended, the boom angle must not be less than 55°.
Loss of stability will occur causing a tipping condition.

CAUTION NOTES:
Maximum length of main boom including extended fly for angle of erecting jib below 30° main boom angle is:
14.0m) JIB - 95 ft. (28.9m)
18.3m) JIB - 86 ft. (26.2m)
22.6m) JIB - 77 ft. (23.5m)
26.8m) JIB - 68 ft. (20.7m)
WARNING: Do not attempt to erect jib over front of machine, boom is fully retracted (fly extended).
Capacities listed are with fully extended outriggers only.

TMS865

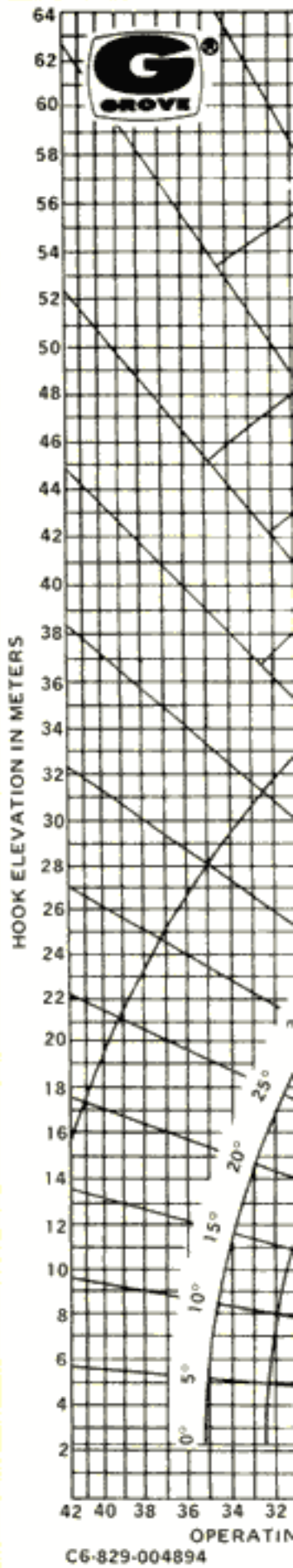
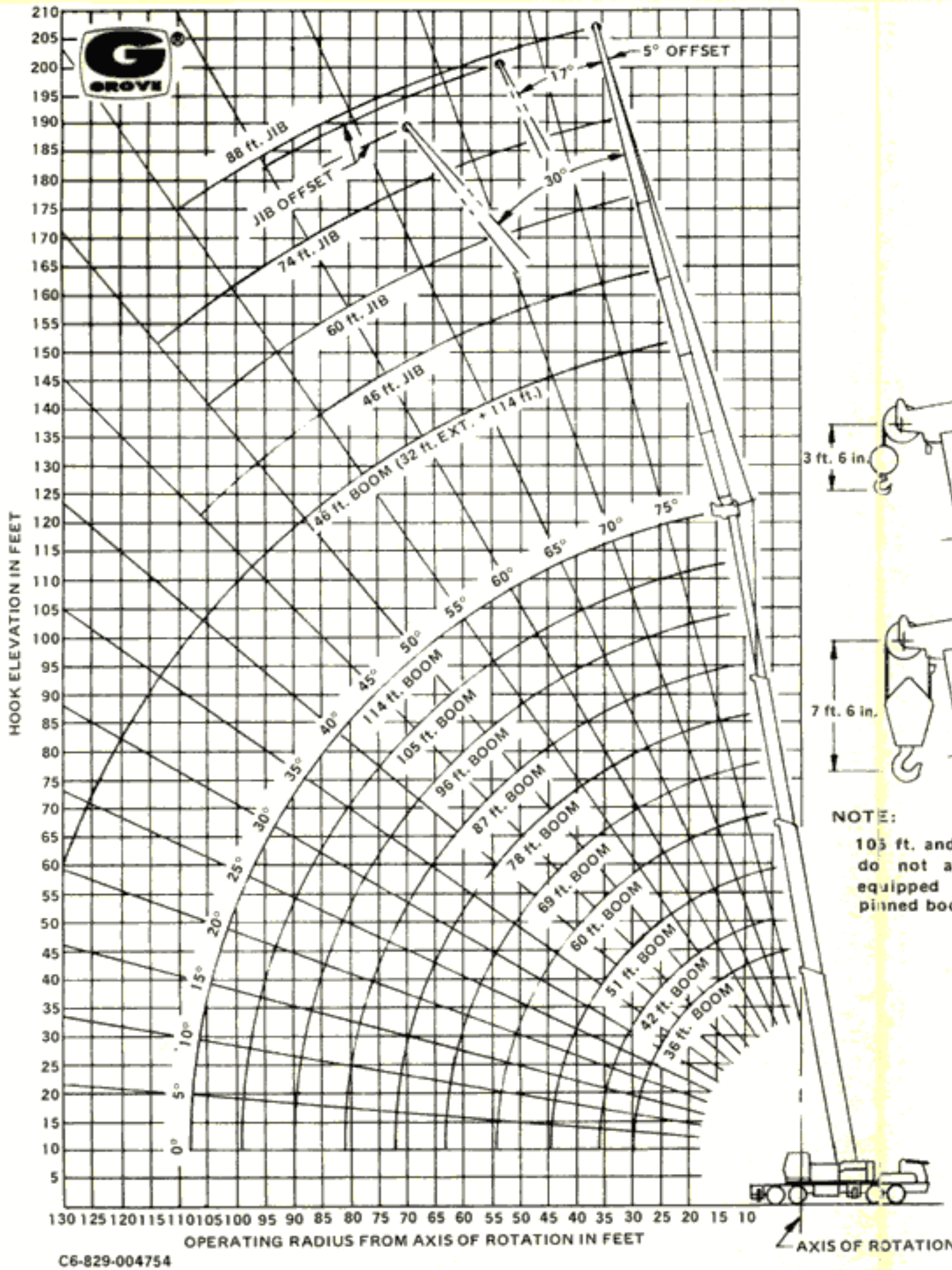
88 ft. (26.8 m)
JIB CAPACITIES

GROVE

RANGE DIAGRAMS

88 ft. (26.8 m) JIB

ENGLISH



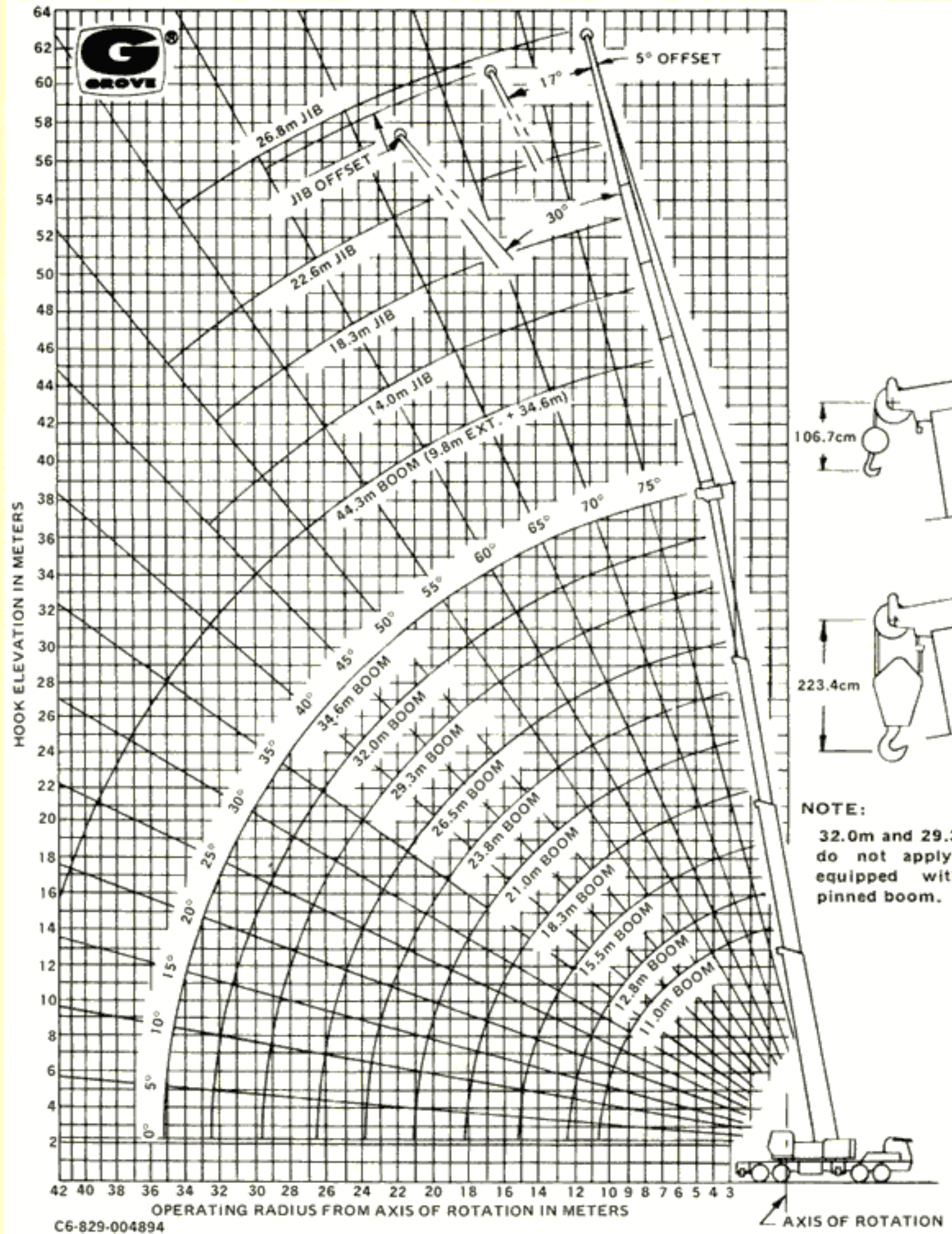
GROVE MANUFACTURING
Division of Walter Kidde & Company Inc
KIDDE

Box 21, Shady Grove, Pennsylvania

RANGE DIAGRAMS

88 ft. (26.8 m) JIB

METRIC



NOTE:
5 ft. and 96 ft. lengths
not apply to units
equipped with power-
pinned boom.



ROTATION

C6-829-004894



GROVE MANUFACTURING COMPANY
Division of Walter Kidde & Company, Inc.
KIDDE

Box 21, Shady Grove, Pennsylvania 17256

Distributed by: