

**KOBELCO**

*Lattice Boom Wheel Crane*

***MK500***

**Max. lifting capacity: 50t x 3.4m**

**Operating weight (basic configuration) : 44.1 tons**



# Lattice Boom's Ruggedness, and Wheel's Footwork, Now Evolved in One.

## Revolution in Dock Works and On-site Jobs! Lattice Boom Wheel Crane, MK500, Has Entered Now From KOBELCO.

Lattice Boom for Crawler Crane, and Telescopic Boom for Wheel Crane. KOBELCO has brought a smash to this longstanding and captured concept. The new-style crane, MK500, has been developed by screening and combining KOBELCO's excellent experiences on attachment & upperstructure technology for crawler cranes and on undercarriage technology for wheel cranes. With this revolutionary combination of lattice boom's ruggedness and wheel's superior footwork, MK500 ensures you with high performance and more efficiency particularly in dock works and on-site jobs.

### 4 Big Four Features

- Single-cab and single-engine machine
- Optimal lifting capacity for dock works
- Higher maneuverability and stability simplifying on-site traveling
- Compact undercarriage saves machine space

#### Efficient Single-cab Machine

Crane operations and traveling can be carried out in the same cab and job efficiency will increase.

#### Single Engine Drive Reduces Maintenance Cost

The machine has a single driving source for crane operation and traveling. The maintenance cost has been drastically reduced compared to truck cranes installed with two engines. Fuel consumption is also reduced by smoothly controlling complex operations with the ESS system making full use of the engine output.



#### Compact Undercarriage Saves Machine Space

The total length of the newly developed three-axes undercarriage is 8,835mm, shorter by approx. 2m compared with truck cranes. Smaller space is enough for operation and parking.



#### Large Capacity Drum and Brake

Large capacity drums can wind 22 lines of 22mm diameter wire rope in the first layer, both in main and auxiliary hoist.

Braking system has large-capacity brake drum and equipped with heat radiating fins so that the durability and reliability have been increased in the jobs using frequent braking operations over long hours.

#### Max. Line Speed; 100m/min. (in the first layer)

Productivity in repeating hoisting and lowering is enhanced. The drum speed is freely adjusted by turning the knob so the boom raising and lowering can be operated at the speed the operator desires. This function makes complex operation such as moving loads horizontally and clamshell easier.



#### Optimal Lifting Capacity for Dock Works

The highest lifting capacity in its class is ensured in 10 to 18m radius operations, which are often required for dock works.

Lifting Capacity (with 23.9m boom) **18.6t/10m, 9.0t/18m**

#### Line Pull Having Strong Power

Max. line pull in the first layer is 156kN {16tf} both in main and auxiliary hoist. Powerful line pull increases the productivity in tough operations such as clamshells.

Rated Line Pull **64.7kN {6.6tf}**

(Main and auxiliary hoist)

#### Higher Maneuverability and Stability Simplifying On-site Traveling

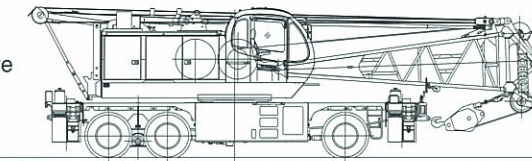
High stability enables on-site traveling of the machine with the longest boom of 33m being attached.

When the boom is shorter than 23.9m, the machine can also travel with the boom positioned horizontally.

※When the boom is over 23.9m, set the boom angle to 60 - 65 degree for on-site traveling.

#### No Need to Detach Basic Boom for Road Traveling

No need to detach the basic boom to travel on public roads. Just remove the counterweight.



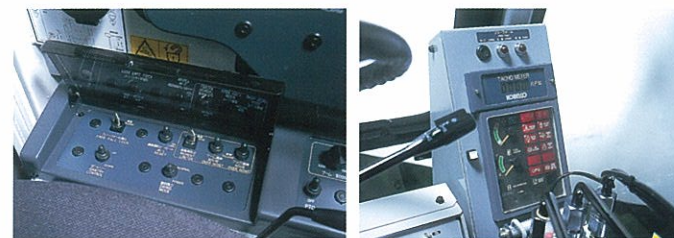
#### Compact Dimensions and Weight for Transport

Considering long distance transport by trailer, a weight of transportation unit is kept at approx. 35 tons. Dimensions are also designed as compact as enough to minimize the disassembly procedure for transport. No need to separate upper machine and lower structure. Just remove counterweight, and the machine is ready for transport.

Four-wheel Drive and Hi/Low Switch are applied for safe loading onto the trailer.

- Total length: 11,900mm
- Wheel Base: 5,425mm
- Height: 3,495mm

#### Detailed Considerations for Safety



Including the Key Controlled Release mechanism to cancel the automatic stop, various functions for safety protection are provided.

#### Rugged Lattice Boom

KOBELCO's lattice boom, having been sophisticated through many years' experiences in tough jobs including foundation works, shows high performance especially in bucket operations as for dock works of various materials such as gravel, grains, and etc.



#### Comfortable Cab

- Air-conditioner with pressurized fresh-air vents
- AM tuner with clock
- Cloth-covered fully reclining and tilting seat
- Windows with panoramic views
- Windshield wipers for front and overhead windows





**Note:** Due to our policy of continual product improvements all designs and specifications are subject to change without advance notice.

## **KOBELCO CRANES CO., LTD.**

17-1, HigashiGotanda 2-chome, Shinagawa-ku, TOKYO, 141-8626 JAPAN  
Tel: ++81 (0) 3-5789-2130 Fax: ++81 (0) 3-5789-3372