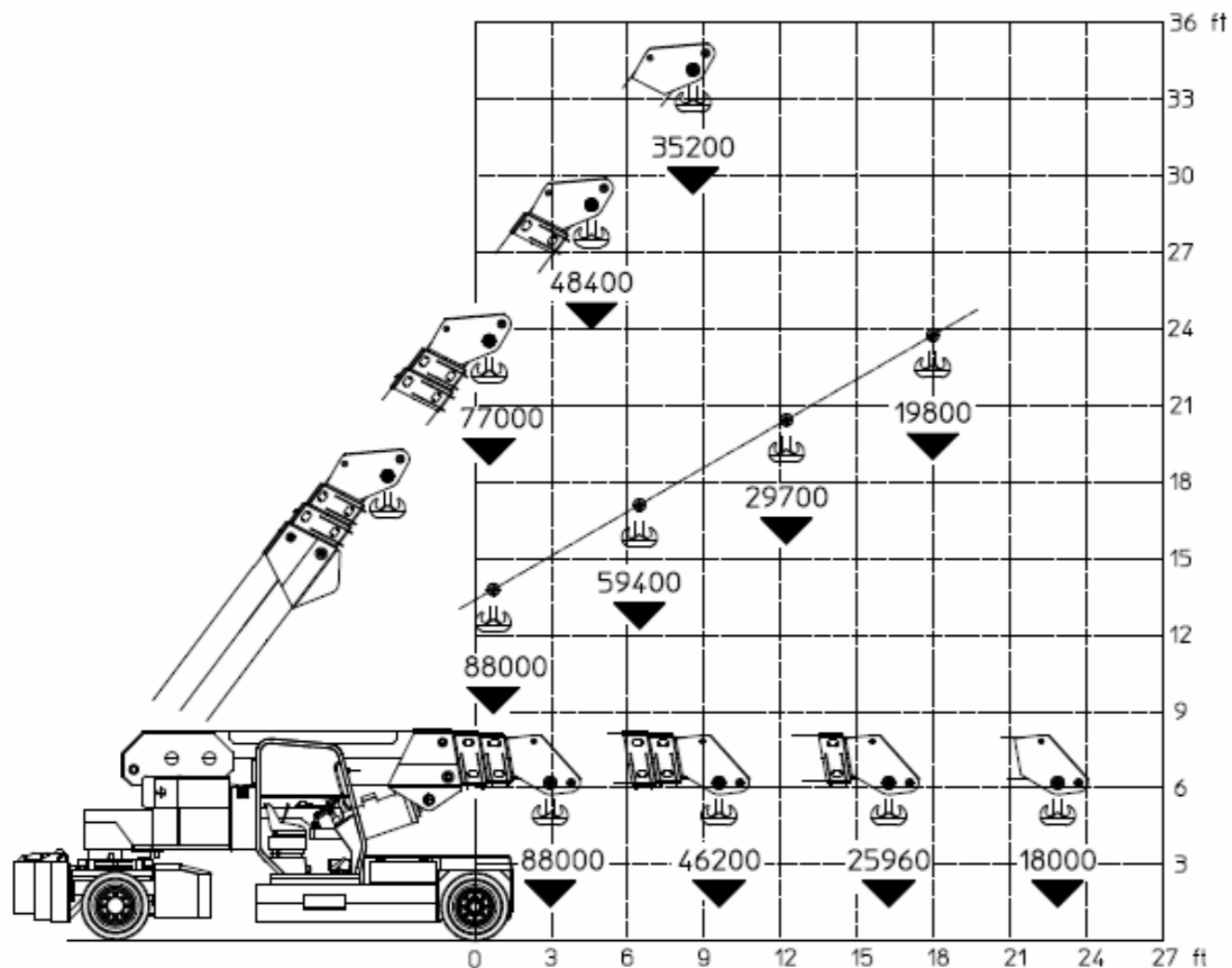


VALLA mobile crane mod. 400E complies with the following standards:
 -2006/42/CE
 -UNIEN13000
 -I.S.P.E.S.L.

Wheelbase extended



Lbs./ft



Valla a division of CVS Ferrari Srl
 Via Piacenza, 45 - 29010 Caldasco (Piacenza) - ITALIA
 Tel. +39 0523 762025 / 752004 - Fax +39 0523 760531
 e-mail: info@valla.com - www.valla.com

Data subject to be changed without any previous notice. Pictures may differ from technical description.

Electric battery operated Mobile Crane
 Max. Capacity **Lbs. 88,000**



TECHNICAL DATA

CRANE FRAME: eight-wheelers frame fabricated from preformed and welded steel plate with possibility to extended the rear power unit.

TRANSMISSION: differential axle with reduction gear between motor and wheels running in oil bath. Travelling speed up to 8 Km/h.

BATTERY: 96V 1450Ah battery, battery meter on dashboard.

BRAKES: foot hydraulically operated brakes on 6 wheels (4 front and 2 rear wheels). Parking hand brake mechanically operated.

SUSPENSION: oscillating rear axle with mechanical lock.

STEERING: power steering operated through own hydraulic circuit by a hydraulic cylinder fitted between the articulated power unit and the crane frame allowing 175° steering fitted with safety valves and filters. 6 kW – 96 V motor driven pump.

WHEELS: nr. 2 rear superelastic 400/60-15 - nr. 6 front superelastic 355/65 R.15.

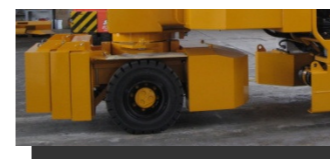
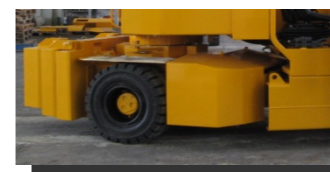
BOOM: boom fabricated from preformed and welded quality steel plate. Nr.4 telescoping sections: 1 fixed; 3 hydraulically telescoping. Fitted with nylon wear pads adjustable wear pads on the sides.

BOOM CONTROL: proportional distributor controlled with joystick. Fitted with filter and safety valves. Motor driven pump 18,5kW 96V.

LMI: electronic Load Moment Indicator. Display showing lifted load, max allowed load, tilting percentage, operating radius, angle, telescope and light indicators on the operative mode.

TOTAL WEIGHT: Lbs. 68,000 (Lbs. 57,600 without counterweight)
MAX. CAPACITY: Lbs. 88,000

Options on request: hydraulic winch; chain hoists; carry-deck; battery charger (on board and stand-alone); manual and hydraulic jibs; cable remote control; radio remote control; man bucket and relevant certification as aerial platform; non marking tires; full set of road lights.



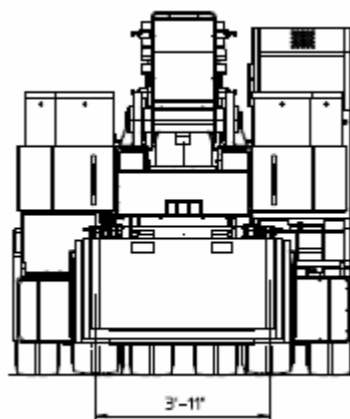
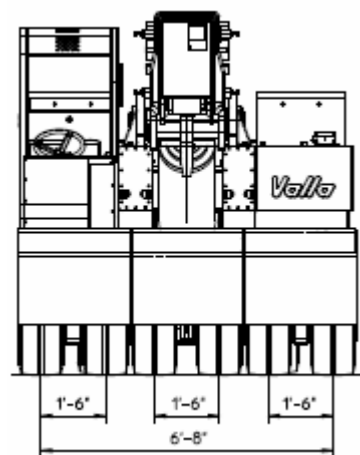
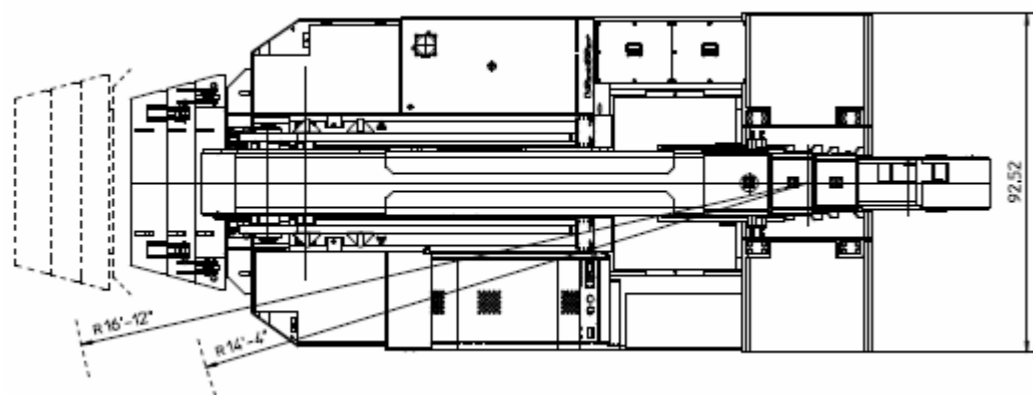
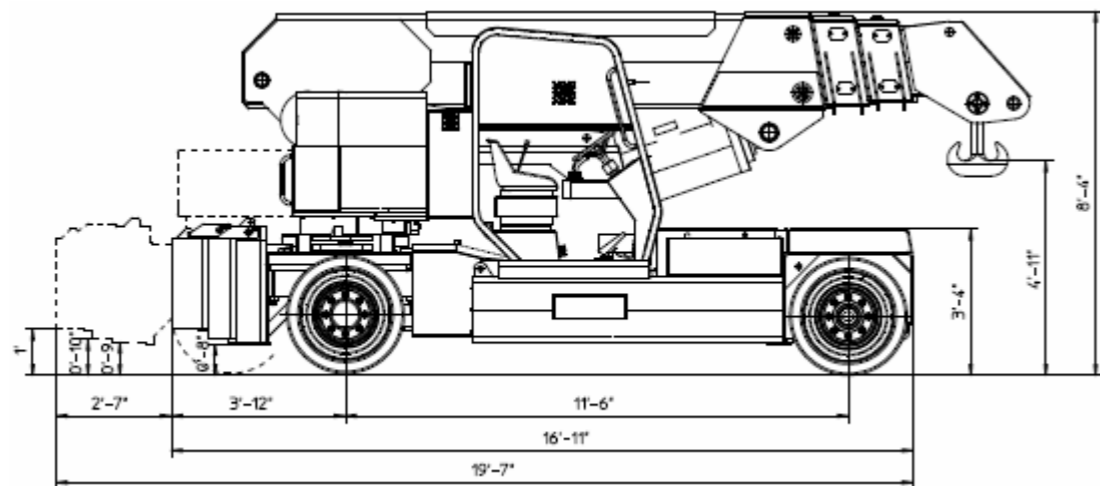
Valla	
BACK WIDE	
OUTREACH (Ft.)	CAPACITY (Lbs.)
9	48,000
15	28,000
23	18,000

Data subject to be changed without any previous notice. Pictures may differ from technical description.





VALLA mobile crane mod. 400E
 complies with the following standards:
 -2006/42/CE
 -UNIEN13000
 -I.S.P.E.S.L.

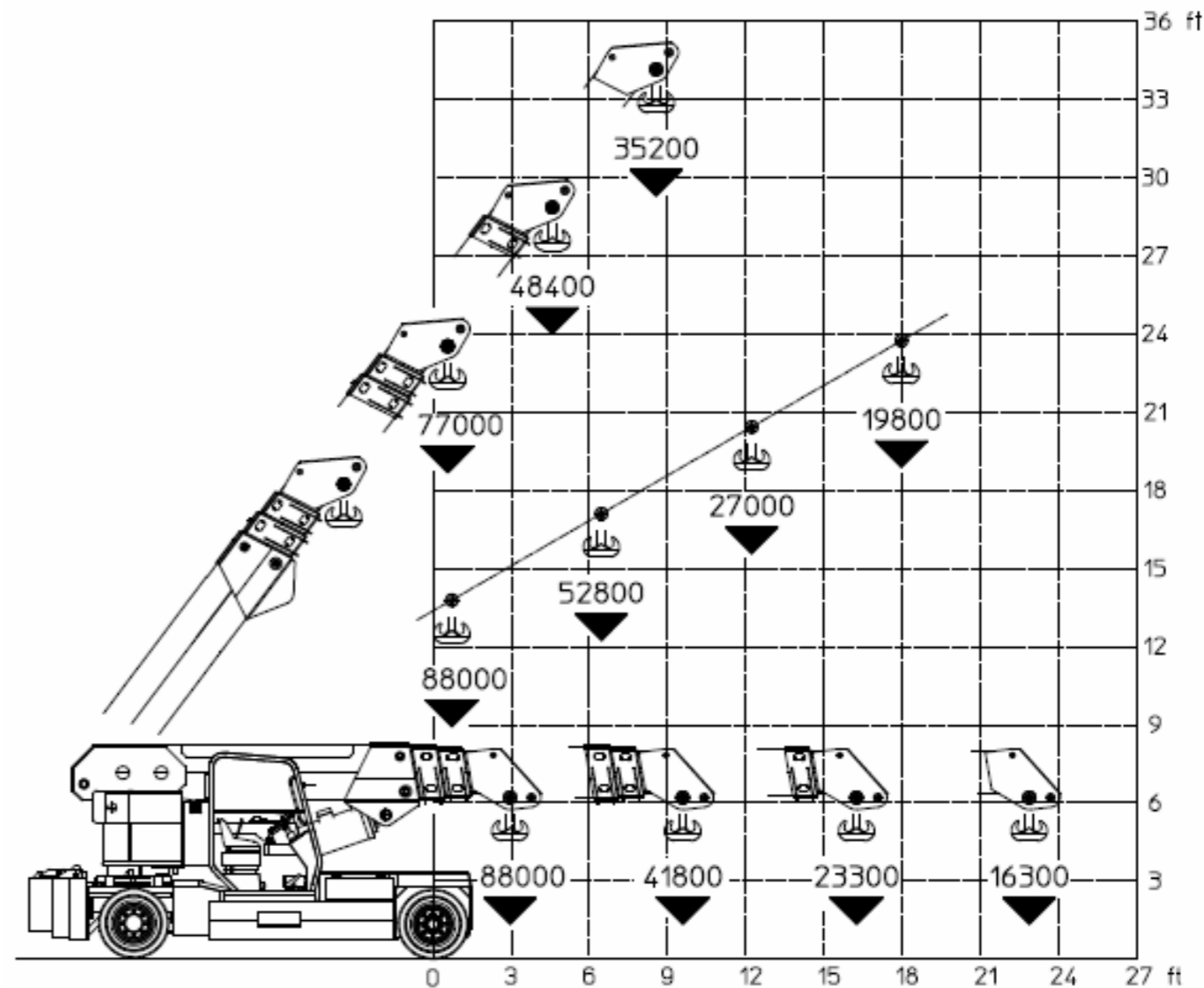


Valla a division of CVS Ferrari Srl
 Via Piacenza, 45 - 29010 Calendasco (Piacenza) - ITALIA
 Tel. +39 0523 762025 / 752004 - Fax +39 0523 760531
 e-mail: info@valla.com - www.valla.com



VALLA mobile crane mod. 400E complies
 with the following standards:
 -2006/42/CE
 -UNIEN13000
 -I.S.P.E.S.L.

Wheelbase retracted



Lbs./ft



Valla a division of CVS Ferrari Srl
 Via Piacenza, 45 - 29010 Calendasco (Piacenza) - ITALIA
 Tel. +39 0523 762025 / 752004 - Fax +39 0523 760531
 e-mail: info@valla.com - www.valla.com

Data subject to be changed without any previous notice. Pictures may differ from technical description.

Data subject to be changed without any previous notice. Pictures may differ from technical description.