



Krøll Cranes



K10000



K10000

The most profitable solution for heavy lifts

For more than 25 years the K10000 has proven its great potential in reducing construction times.

On construction sites it is estimated that this 10000 ton-metre crane can lop six months off a four year construction phase of a power plant. The cost savings involved are considerable. Six months interest saving plus the income from six months additional power production – an important financial advantage for an investment of this type.

New calculations prove that these remarkable achievements can be equally transferred to any large construction projects.

In shipyards, the K10000 has proven to be superior to other lifting solutions due to high capacity, long reach, high free space under the jib, free height under the portal allowing for traffic and/or storage between the rail tracks and the ability to travel with the load.

And the K10000 offers more advantages. The well-known problems created by a forest of 30-40 smaller cranes on a large construction site are eliminated with the K10000.

This is – in summary – what makes the K10000 the most advantageous and profitable solution for any large construction work:

- **Considerable reduction in constructions time**
- **Low maintenance**
- **No risks of collisions between jibs**
- **No interference with construction activities**
- **Unlimited storage locations**
- **Simple ground transport**
- **Optimum possibilities for prefabrication of larger assemblies**
- **Maximum degree of modularisation**

The K10000 is available in two versions: a static version with a work area of 200 m diameter and a rail going version on a rail going portal base with unlimited work area.

The load capacity is 120 t over its entire reach of 100 m. At 44 m the capacity is 240 t. The K10000 also has a top mounted auxiliary crane, which independently of any heavy lift operation can work with loads up to 20 t. The main standard hook height for the K10000 is 86 m, allowing smaller cranes and mobiles to work underneath it with no risk of collisions. A considerable effort has been invested to make the crane operable under any climatic conditions and cable to operate in wind speeds up to 20 m/s. Out of the operation the crane can withstand wind speeds up to 42 m/sec in the standard version.

Special care has been taken for transport by land or sea. The number of wide loads is limited and still within the permissible dimensions. Furthermore the K10000 is designed with a hydraulic telescoping system so it will telescope from low to final height under its own power.



The highest degree of safety is achieved by compliance with international recognised codes for crane design. The K10000 is equipped with the most advanced crane control systems with motion control and monitored safety systems, which in seconds will give the crane operator the calculated stress in all critical members.

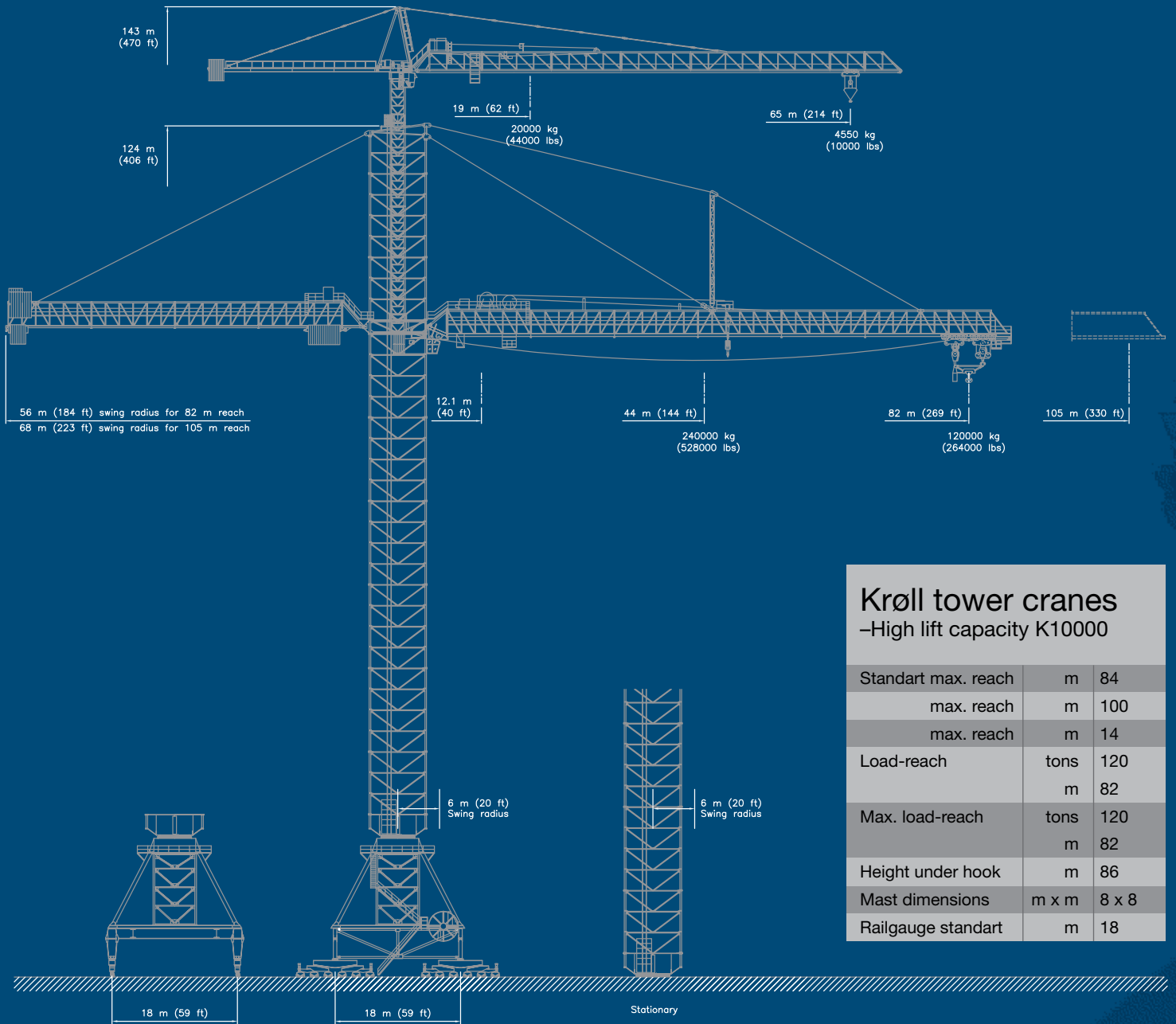
The K10000 means proven performance, complete documentation, guaranteed delivery, full technical assistance during erection, commissioning, and after-sale-service.

The K10000 opens new roads for both design and planning of any heavy lifting operations.

The full benefit from this crane can only be achieved if it is incorporated in the overall planning at a very early stage.

Our technicians are at your service also at this stage.

K10000 – the world's largest capacity tower crane for planning with foresight and initiative.



Krøll tower cranes –High lift capacity K10000

Standart max. reach	m	84
max. reach	m	100
max. reach	m	14
Load-reach	tons	120
	m	82
Max. load-reach	tons	120
	m	82
Height under hook	m	86
Mast dimensions	m x m	8 x 8
Railgauge standart	m	18



Krøll Cranes A/S

Nordkranvej 2
DK-3540 Lyngø
Denmark
Tel +45 48 18 74 00
Fax +45 48 18 88 07
krollcranes@krollcranes.dk
www.krollcranes.dk

FAVELLE
FAVCO