

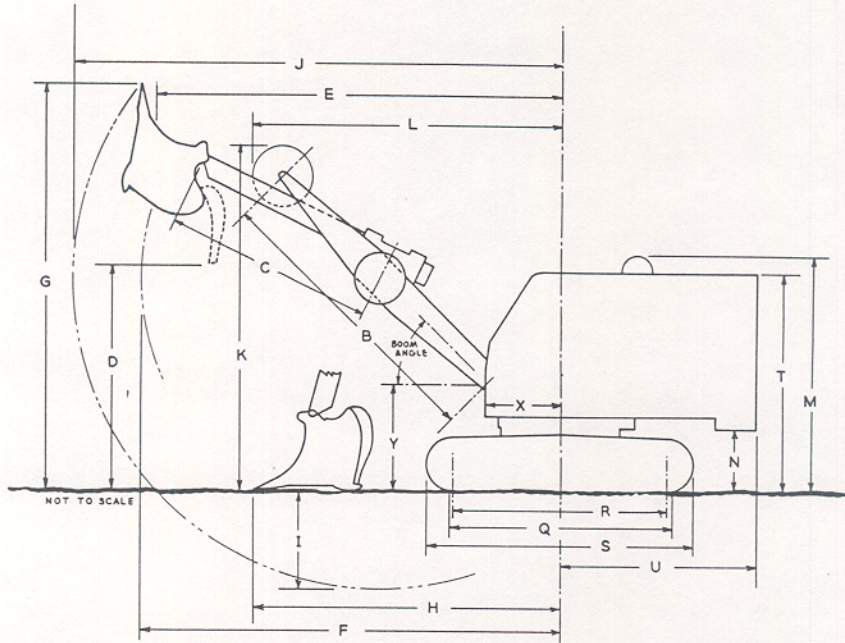
**LINK-BELT
SPEEDER**

K-360 Tunnel Shovel

Clearances - Working Ranges

(SEVEN ROLLER SIDE FRAMES)

GENERAL INFORMATION ONLY



SHOVEL WORKING RANGES

Dipper capacity, cubic yards — (struck measure)	13 ³ / ₄
B—Boom length, center to center of pins	15' 6"
B ¹ effective boom length (center of boom foot pin to cable pitch line of peak sheave)	17' 0"
C—Dipper stick length, effective	11' 2"
Dipper stick length, over-all	13' 1"

Boom angle	A	60°	45°	40°
Maximum dumping height	D	15' 7"	12' 0"	10' 6"
Dumping radius at max. height	E	18' 8"	21' 10"	22' 7"
Maximum dumping radius	F	20' 11"	22' 7"	23' 0"
Maximum cutting height	G	25' 9"	21' 6"	19' 10"
Maximum clean-up radius	H	15' 3"	16' 6"	16' 10"
Maximum digging depth	I	3' 11"	5' 3"	5' 9"
Maximum cutting radius	J	24' 7"	26' 3"	26' 9"
Boom clearance height	K	20' 10"	18' 4"	17' 3"
Boom clearance radius	L	13' 5"	16' 8"	17' 7"

GENERAL DIMENSIONS

Height of low mast	M	12' 6"
Height of cab	T	11' 7"
Clearance, counterweight "A"	N	3' 4"
Crawler ground bearing length	Q	12' 3"
Center to center of wheels	R	11' 3"
Over-all length of crawler	S	14' 2"
Tailswing, counterweight "A"	U	10' 6"
Radius of boom hinge pin	X	4' 0"
Height of boom hinge pin	Y	5' 8"
Width of cab		10' 3"
Minimum ground clearance		1' 2"
Over-all width—28" wide track shoes		10' 6"
Over-all width—32" wide track shoes		10' 10"

BRIEF SPECIFICATIONS

POWER UNIT

Standard—
General Motors 6082 diesel engine with torque converter, six cylinder,
182 h.p. (stripped engine) at 950 r.p.m. full load speed.

Optional—
Caterpillar and Cummins.

TUNNEL SHOVEL

Approximate working weight with low gantry, counterweight "A" 17 tooth pinion and 28" wide track shoes	90,700 lbs.
Crowd speed	63 f.p.m.
Retract speed	124 f.p.m.
Swing speed	3.4 r.p.m.
Travel speed83 m.p.h.
Logging	Line Pull
22' hoist	30,400 lbs.
	Line Speed
	150 f.p.m.

WE ARE CONSTANTLY IMPROVING OUR PRODUCTS AND THEREFORE RESERVE
THE RIGHT TO CHANGE DESIGNS AND SPECIFICATIONS

For Certified Dimensions, Consult Factory

LINK-BELT SPEEDER

Link-Belt Speeder Corp.
Cedar Rapids, Iowa

Link-Belt Speeder (Canada), Ltd.
Woodstock, Ontario

LIFTING CAPACITIES WITH RETRACTABLE HIGH GANTRY^②

BOOM			W Boom Point Height	LIFTING CRANE		DRAGLINE		CLAMSHELL-MAGNET	
Length	Radius	Angle		Counterweight "A"	Counterweight "AB"	Counterweight "A" ^①	Counterweight "AB" ^①	Counterweight "A" ^①	Counterweight "AB" ^①
50'	12'	80°	55' 0"	56,990	64,490	---	---	15,000	15,000
	15'	77°	54' 5"	40,210	45,560	---	---	15,000	15,000
	20'	71°	52' 11"	26,580	30,230	---	---	15,000	15,000
	25'	65°	50' 11"	19,550	22,300	---	---	15,000	15,000
	30'	59°	48' 6"	15,420	17,620	12,000	12,000	13,870	15,000
	35'	51°	44' 6"	12,610	14,460	12,000	12,000	11,340	13,010
	40'	43°	39' 9"	10,560	12,160	10,560	12,000	9,500	10,940
	45'	34°	33' 8"	9,040	10,440	9,040‡	10,440‡	8,130	9,390
	47'	30°	30' 8"	---	---	8,540‡	9,880‡	---	---
50'	23°	25' 2"	7,790	9,040	7,790‡	9,040‡	7,010	8,130	
60'	15'	79°	64' 7"	40,000	45,360	---	---	15,000	15,000
	20'	75°	63' 7"	26,230	29,880	---	---	15,000	15,000
	25'	69°	61' 8"	19,250	22,000	---	---	15,000	15,000
	30'	64°	59' 7"	15,020	17,220	---	---	13,510	15,000
	35'	59°	57' 1"	12,210	14,060	12,000	12,000	10,980	12,650
	40'	53°	53' 7"	10,160	11,760	10,160	11,760	9,140	10,580
	45'	47°	49' 6"	8,640	10,040	8,640	10,040	7,770	9,030
	50'	40°	44' 2"	7,390	8,640	7,390	8,640	6,650	7,770
	55'	32°	37' 5"	6,570	7,670	6,570‡	7,670‡	5,910	6,900
56'	30°	35' 5"	---	---	6,420‡	7,500‡	---	---	
60'	21°	27' 2"	5,800	6,800	5,800‡	6,800‡	5,220	6,120	
70'	15'	81°	74' 10"	39,610	44,960	---	---	15,000	15,000
	20'	77°	73' 10"	25,880	29,530	---	---	15,000	15,000
	25'	73°	72' 7"	18,950	21,700	---	---	15,000	15,000
	30'	68°	70' 7"	14,720	16,920	---	---	13,240	15,000
	35'	64°	68' 7"	11,910	13,760	---	---	10,710	12,380
	40'	59°	65' 8"	9,860	11,460	9,860	11,460	8,870	10,310
	45'	54°	62' 3"	8,340	9,740	8,340	9,740	7,500	8,760
	50'	49°	58' 6"	7,090	8,340	7,090	8,340	6,380	7,500
	55'	43°	53' 4"	6,170	7,270	6,170	7,270	5,550	6,540
	60'	36°	46' 10"	5,400	6,400	5,400	6,400	4,860	5,760
	64'	30°	41' 0"	---	---	5,840‡	5,700‡	---	---
65'	29°	39' 7"	4,750	5,700	4,750‡	5,700‡	4,270	5,130	
70'	19°	28' 6"	4,110	4,960	4,110‡	4,960‡	3,690	4,460	
80' ② ③	20'	79°	84' 2"	25,580	29,230	---	---	---	---
	25'	75°	82' 11"	18,640	21,390	---	---	---	---
	30'	71°	81' 4"	14,330	16,530	---	---	---	---
	35'	67°	79' 4"	11,550	13,400	---	---	---	---
	40'	63°	76' 11"	9,520	11,120	---	---	---	---
	50'	55°	71' 2"	6,730	7,980	---	---	---	---
	60'	46°	63' 2"	5,000	6,000	---	---	---	---
70'	34°	50' 4"	3,790	4,640	---	---	---	---	
80'	18°	30' 4"	2,930	3,680	---	---	---	---	
100' ② ③	25'	79°	103' 5"	18,090	20,840	---	---	---	---
	30'	75°	102' 3"	13,830	15,980	---	---	---	---
	35'	72°	100' 9"	10,950	12,800	---	---	---	---
	40'	69°	99' 0"	8,920	10,520	---	---	---	---
	50'	62°	93' 11"	6,180	7,430	---	---	---	---
	60'	56°	88' 7"	4,400	5,400	---	---	---	---
	70'	49°	81' 1"	3,190	4,040	---	---	---	---
	80'	40°	69' 11"	2,280	3,030	---	---	---	---
90'	31°	57' 2"	1,470	2,120	---	---	---	---	
100'	16°	33' 2"	1,010	1,610	---	---	---	---	
120' ② ③	25'	80°	123' 10"	17,520	20,280	---	---	---	---
	30'	78°	122' 9"	13,280	15,500	---	---	---	---
	35'	75°	121' 7"	10,410	12,270	---	---	---	---
	40'	73°	120' 0"	8,360	9,950	---	---	---	---
	50'	67°	116' 6"	5,600	6,850	---	---	---	---
	60'	62°	111' 7"	3,840	4,850	---	---	---	---
	70'	57°	105' 9"	2,620	3,470	---	---	---	---
	80'	51°	98' 5"	1,770	2,460	---	---	---	---
	90'	44°	89' 3"	1,020	1,680	---	---	---	---
	100'	37°	77' 7"	480	1,070	---	---	---	---
110'	28°	61' 11"	---	570	---	---	---	---	
120'	15°	36' 9"	---	160	---	---	---	---	

Lifting capacities shown are in pounds and are not more than 75% of minimum tipping loads with machine standing on firm level ground. A deduction must be made from the lifting capacities for weight of hookblock, hook, sling, grapple, etc.

‡ Dragline operation with boom angle less than 35° is seldom advisable.

① For normal dragline, clamshell, magnet or similar work, weight of bucket or magnet plus load should not exceed capacities shown in dragline or clamshell chart with machine standing on firm level ground. These are maximum values and allowance must be made for soft or uneven footing, bucket suction and other unfavorable conditions. Boom length for average dragline, clamshell, magnet or similar work should not exceed 70 feet.

② Retractable gantry required for booms over 70 feet long.

③ Lifting crane service only.

NOTE: Six part hoistline 3/4" cable required for maximum lift.

GENERAL INFORMATION ONLY

	Counterweight "A"	Counterweight "AB"
Max. boom machine can pick clear of ground over end	120'	120'
Max boom plus jib machine can pick clear of ground over end	100' + 20'	100' + 30'

BRIEF SPECIFICATIONS

CRAWLER

28" wide track shoes standard.
32" wide track shoes optional at extra cost. Standard travel speeds: .83 m.p.h. with 17 tooth engine pinion, .92 m.p.h. with 19 tooth engine pinion.

LIFTING CRANE AND CLAMSHELL

Approximate working weight with 50' boom, 28" wide track shoes, low gantry, counterweight "A", 19 tooth engine pinion, no bucket, hookblock or tagline winder ----- 83,800 lbs.
Lagging ----- Line Pull ----- Line Speed
22" (hoist — holding) ----- 27,300 lbs. ----- @ 167 f.p.m.
22" (hoist — closing) ----- 27,300 lbs. ----- @ 167 f.p.m.
Swing speed ----- 3.8 r.p.m.

DRAGLINE

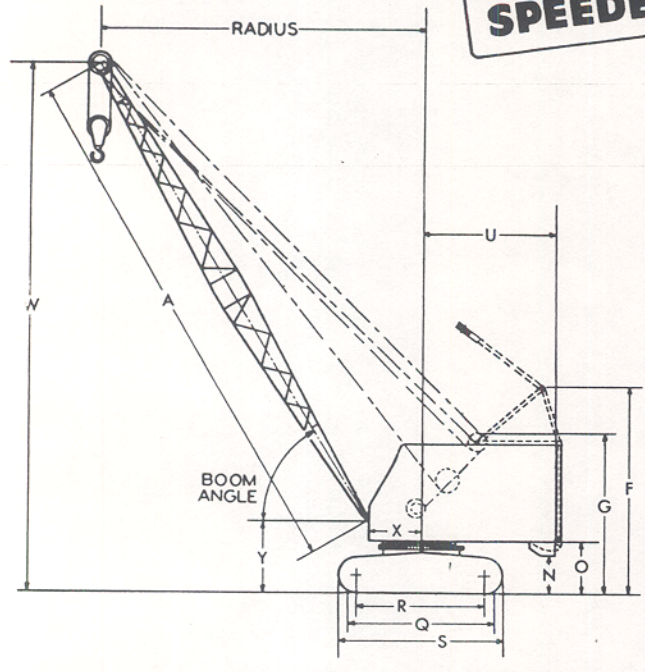
Approximate working weight with 50' boom, 28" wide track shoes, low gantry, counterweight "A", 17 tooth engine pinion, no bucket ----- 84,800 lbs.
Lagging ----- Line Pull ----- Line Speed
22" hoist ----- 30,400 lbs. ----- @ 150 f.p.m.
22" inhaul ----- 30,400 lbs. ----- @ 150 f.p.m.
Swing speed ----- 3.4 r.p.m.

LINK-BELT SPEEDER

Clearances - Specifications

Working Ranges K-360 Crane

(SEVEN ROLLER SIDE FRAMES)



GENERAL DIMENSIONS		
Basic boom length	A	50'
Over-all height, retractable gantry lowered		13' 0" ①
Over-all height, retractable gantry raised	F	16' 0"
Over-all height, low gantry	G	12' 6"
Clearance (counterweight "AB")	N	2' 7"
Clearance (counterweight "A")	O	3' 4" ②
Crawler ground bearing length	Q	12' 3"
Center to center of wheels	R	11' 3"
Over-all crawler length	S	14' 2"
Tailswing (counterweight "A")	U	10' 6" ③
Tailswing (counterweight "AB")	U	10' 6" ③
Radius of boom hinge pin	X	4' 0"
Height of boom hinge pin	Y	5' 8"
Over-all width with 28" wide track shoes		10' 6"
Over-all width with 32" wide track shoes		10' 10"
Width of cab		10' 3"
Minimum ground clearance		1' 2"

① 13'11" with rapid boom hoist.
 ② 3' 0" with retractable high gantry.
 ③ 10'10" with retractable high gantry.

LIFTING CAPACITIES WITH LOW GANTRY

BOOM			W Boom Point Height	LIFTING CRANE		DRAGLINE		CLAMSHELL-MAGNET	
Length	Radius	Angle		Counterweight "A"	Counterweight "AB"	Counterweight "A" ①	Counterweight "AB" ①	Counterweight "A" ①	Counterweight "AB" ①
50'	12'	80°	55' 0"	53,290	60,790	---	---	15,000	15,000
	15'	77°	54' 5"	37,560	42,910	---	---	15,000	15,000
	20'	71°	52' 11"	24,780	28,430	---	---	15,000	15,000
	25'	65°	50' 11"	18,190	20,940	---	---	15,000	15,000
	30'	59°	48' 6"	14,330	16,530	12,000	12,000	12,900	14,870
	35'	51°	44' 6"	11,700	13,550	11,700	12,000	10,500	12,190
	40'	43°	39' 9"	9,770	11,370	9,770	11,370	8,800	10,230
	45'	34°	33' 8"	8,350	9,750	8,350‡	9,750‡	7,500	8,770
	47'	30°	30' 8"	---	---	---	---	---	---
	50'	23°	25' 2"	7,180	8,430	7,180‡	8,430‡	6,460	7,580
60'	15'	79°	64' 7"	37,360	42,710	---	---	15,000	15,000
	20'	75°	63' 7"	24,430	28,080	---	---	15,000	15,000
	25'	69°	61' 8"	17,890	20,640	---	---	15,000	15,000
	30'	64°	59' 7"	13,930	16,130	---	---	12,500	14,510
	35'	59°	57' 1"	11,300	13,150	11,300	12,000	10,200	11,830
	40'	53°	53' 7"	9,370	10,970	9,370	10,970	8,450	9,870
	45'	47°	49' 6"	7,950	9,350	7,950	9,350	7,150	8,410
	50'	40°	44' 2"	6,780	8,030	6,780	8,030	6,100	7,220
	55'	32°	37' 5"	6,020	7,120	6,020‡	7,120‡	5,420	6,400
	60'	21°	27' 2"	5,300	6,300	5,300‡	6,300‡	4,770	5,670
70'	15'	81°	74' 10"	36,960	42,310	---	---	15,000	15,000
	20'	77°	73' 10"	24,080	27,730	---	---	15,000	15,000
	25'	73°	72' 7"	17,590	20,340	---	---	15,000	15,000
	30'	68°	70' 7"	13,630	15,830	---	---	12,300	14,240
	35'	64°	68' 7"	11,000	12,850	---	---	9,900	11,560
	40'	59°	65' 8"	9,070	10,670	9,070	10,670	8,150	9,600
	45'	54°	62' 3"	7,650	9,050	7,650	9,050	6,870	8,140
	50'	49°	58' 6"	6,480	7,730	6,480	7,730	5,840	6,950
	55'	43°	53' 4"	5,620	6,720	5,620	6,720	5,050	6,040
	60'	36°	46' 10"	4,900	5,900	4,900	5,900	4,400	5,310
	64'	30°	41' 0"	---	---	4,380‡	5,370‡	---	---
	65'	29°	39' 7"	4,290	5,240	4,290‡	5,240‡	3,860	4,710
	70'	19°	28' 6"	3,690	4,540	3,690‡	4,540‡	3,320	4,080

	Counterweight "A"	Counterweight "AB"
Max. boom machine can pick clear of ground over end	70'	70'
Max boom plus jib machine can pick clear of ground over end	70' + 30'	70' + 40'

GENERAL INFORMATION ONLY

**LINK-BELT
SPEEDER**

K-360 Lifting Capacities^① With Low Gantry

BOOM			W Boom Point Height	LIFTING CRANE		DRAGLINE		CLAMSHELL-MAGNET	
Length	Radius	Angle		Counterweight "A"	Counterweight "AB"	Counterweight "A" ^②	Counterweight "AB" ^②	Counterweight "A" ^②	Counterweight "AB" ^②
50'	12'	80°	55' 0"	53,290	60,790	---	---	15,000	15,000
	15'	77°	54' 5"	37,560	42,910	---	---	15,000	15,000
	20'	71°	52' 11"	24,780	28,430	---	---	15,000	15,000
	25'	65°	50' 11"	18,190	20,940	---	---	15,000	15,000
	30'	59°	48' 6"	14,330	16,530	12,000	12,000	12,900	14,870
	35'	51°	44' 6"	11,700	13,550	11,700	12,000	10,500	12,190
	40'	43°	39' 9"	9,770	11,370	9,770	11,370	8,800	10,230
	45'	34°	33' 8"	8,350	9,750	8,350‡	9,750‡	7,500	8,770
	47'	30°	30' 8"	---	---	7,925‡	9,220‡	---	---
	50'	23°	25' 2"	7,180	8,430	7,180‡	8,430‡	6,460	7,580
60'	15'	79°	64' 7"	37,360	42,710	---	---	15,000	15,000
	20'	75°	63' 7"	24,430	28,080	---	---	15,000	15,000
	25'	69°	61' 8"	17,890	20,640	---	---	15,000	15,000
	30'	64°	59' 7"	13,930	16,130	---	---	12,500	14,510
	35'	59°	57' 1"	11,300	13,150	11,300	12,000	10,200	11,830
	40'	53°	53' 7"	9,370	10,970	9,370	10,970	8,450	9,870
	45'	47°	49' 6"	7,950	9,350	7,950	9,350	7,150	8,410
	50'	40°	44' 2"	6,780	8,030	6,780	8,030	6,100	7,220
	55'	32°	37' 5"	6,020	7,120	6,020‡	7,120‡	5,420	6,400
	56'	30°	35' 5"	---	---	5,890‡	6,950‡	---	---
60'	21°	27' 2"	5,300	6,300	5,300‡	6,300‡	4,770	5,670	
70'	15'	81°	74' 10"	36,960	42,310	---	---	15,000	15,000
	20'	77°	73' 10"	24,080	27,730	---	---	15,000	15,000
	25'	73°	72' 7"	17,590	20,340	---	---	15,000	15,000
	30'	68°	70' 7"	13,630	15,830	---	---	12,300	14,240
	35'	64°	68' 7"	11,000	12,850	---	---	9,900	11,560
	40'	59°	65' 8"	9,070	10,670	9,070	10,670	8,150	9,600
	45'	54°	62' 3"	7,650	9,050	7,650	9,050	6,870	8,140
	50'	49°	58' 6"	6,480	7,730	6,480	7,730	5,840	6,950
	55'	43°	53' 4"	5,620	6,720	5,620	6,720	5,050	6,040
	60'	36°	46' 10"	4,900	5,900	4,900	5,900	4,400	5,310
64'	30°	41' 0"	---	---	4,380‡	5,370‡	---	---	
65'	29°	39' 7"	4,290	5,240	4,290‡	5,240‡	3,860	4,710	
70'	19°	28' 6"	3,690	4,540	3,690‡	4,540‡	3,320	4,080	

① Lifting capacities shown are in pounds and are not more than 75% of minimum tipping loads with machine standing on firm level ground. A deduction must be made from the lifting capacities for weight of hookblock, hook, sling, grapple, etc.

② For normal dragline, clamshell, lifting magnet or similar work, weight of bucket or magnet plus load should not exceed capacities shown in dragline or clamshell-magnet chart with machine standing on firm level ground. These are values for normal conditions and exceptions may be made for above average conditions. However, allowances must be made for soft or uneven footing, bucket suction or other unfavorable conditions. Boom length for average dragline, clamshell, magnet or similar work should not exceed 70 feet.

‡ Dragline operation with boom angle less than 35° is seldom advisable. NOTE: Six parts hoist line 3/4" cable required for maximum lifts.

Maximum boom machine can pick clear of ground over end with counterweight "A" or counterweight "AB" is 70 feet.

GENERAL INFORMATION ONLY

WE ARE CONSTANTLY IMPROVING OUR PRODUCTS AND THEREFORE RESERVE THE RIGHT TO CHANGE DESIGNS AND SPECIFICATIONS

For Certified Dimensions, Consult Factory

LINK-BELT SPEEDER

Link-Belt Speeder
Cedar Rapids, Iowa

Link-Belt Speeder (Canada), Ltd.
Woodstock, Ontario