

LORAIN[®] LRT 200D SERIES

20 ton (18.1 mt) to 27.5 ton (24.9 mt)
rough terrain cranes



LRT 200D SERIES

FOUR MODELS FROM 20 TO 27.5 TON (18.1 TO 24.9 MT) LIFTING CAPACITY:

- LRT 200D—20 tons (18.1 mt)
- LRT 230D—23 tons (20.9 mt)
- LRT 250D—25 tons (22.7 mt)
- LRT 275D—27.5 tons (24.9 mt)

72-FOOT (21.95 m) THREE-SECTION, FULL POWER SYNCHRONIZED BOOM WITH SINGLE LEVER CONTROL

- Quick-reeving boom head; no need to remove wedge from socket.
- Boom elevation of -5° to 76° for easier reeving changes and close radius operation. Pendulum angle indicator.
- Optional 94-foot (28.65 m) four-section manual pin boom. Versatile, longest in its class.

Machines shown may have optional equipment.

ENVIRONMENTALLY-DESIGNED OPERATOR'S CAB

- Sound and weather insulated for comfort.
- High-back reclining operator's seat with adjustable head and arm rests.
- Removable front window, pop-up tinted Lexan[®] skylight, and sliding right-hand window.
- Dash-mounted controls for swing and boom telescope; pedals for swing brake and boom elevation. Foot accelerator with hand throttle.
- Complete instrumentation. Environmentally sealed rocker switches. Circuit breakers in cab.

BOX-TYPE CHASSIS CONSTRUCTION WITH REINFORCING CROSS MEMBERS

- Full power-shift transmission with integral torque converter, neutral safety start, 6 speeds forward, 6 reverse.
- 2-wheel, 4-wheel coordinated or crab steer.

- 18 ft. (5.49 m) centerline to centerline outrigger spread. Outrigger pads stow on frame.
- Standard Cummins 6BT5.9 engine.

LORAIN DESIGNED AND BUILT HOISTS

- 562 fpm (171 mpm) maximum line speed is fastest in industry. 10,100 lbs. (4581 kg) maximum line pull. Single lever control.
- Fully enclosed disc brake.
- Anti-two block system with automatic function disconnects.
- Hydraulic reservoir with 81 gal. (307 liter) capacity and dual filtration.

OPTIONAL EQUIPMENT

- 26-foot or 26- to 43-foot (7.92 m or 7.92 to 13.11 m) swingaway jibs, offset 0° , 15° or 30° with pin and lock mechanism.
- Winch rotation indicators and cable followers.
- Load moment indicators.
- Heater (diesel or propane).
- Auxiliary winch with rope.
- Oil cooler.
- Detroit Diesel, 8.2L V8 engine.

LORAIN HYDRAULIC CRANES Your best value in lifting



Carrier-mounted models up to 35 tons (31.8 mt)



Rough terrain models up to 35 tons (31.8 mt)



Industrial cranes up to 18 tons (16.3 mt)

WE RESERVE THE RIGHT TO AMEND THESE SPECIFICATIONS AT ANY TIME WITHOUT NOTICE. THE ONLY WARRANTY APPLICABLE IS OUR STANDARD WRITTEN WARRANTY APPLICABLE TO THE PARTICULAR PRODUCT AND SALE. WE MAKE NO OTHER WARRANTY, EXPRESSED OR IMPLIED.



**KOEHRING
CRANES &
EXCAVATORS**

Koehring Cranes & Excavators, Inc.
Waverly, Iowa 50677

Range Diagram

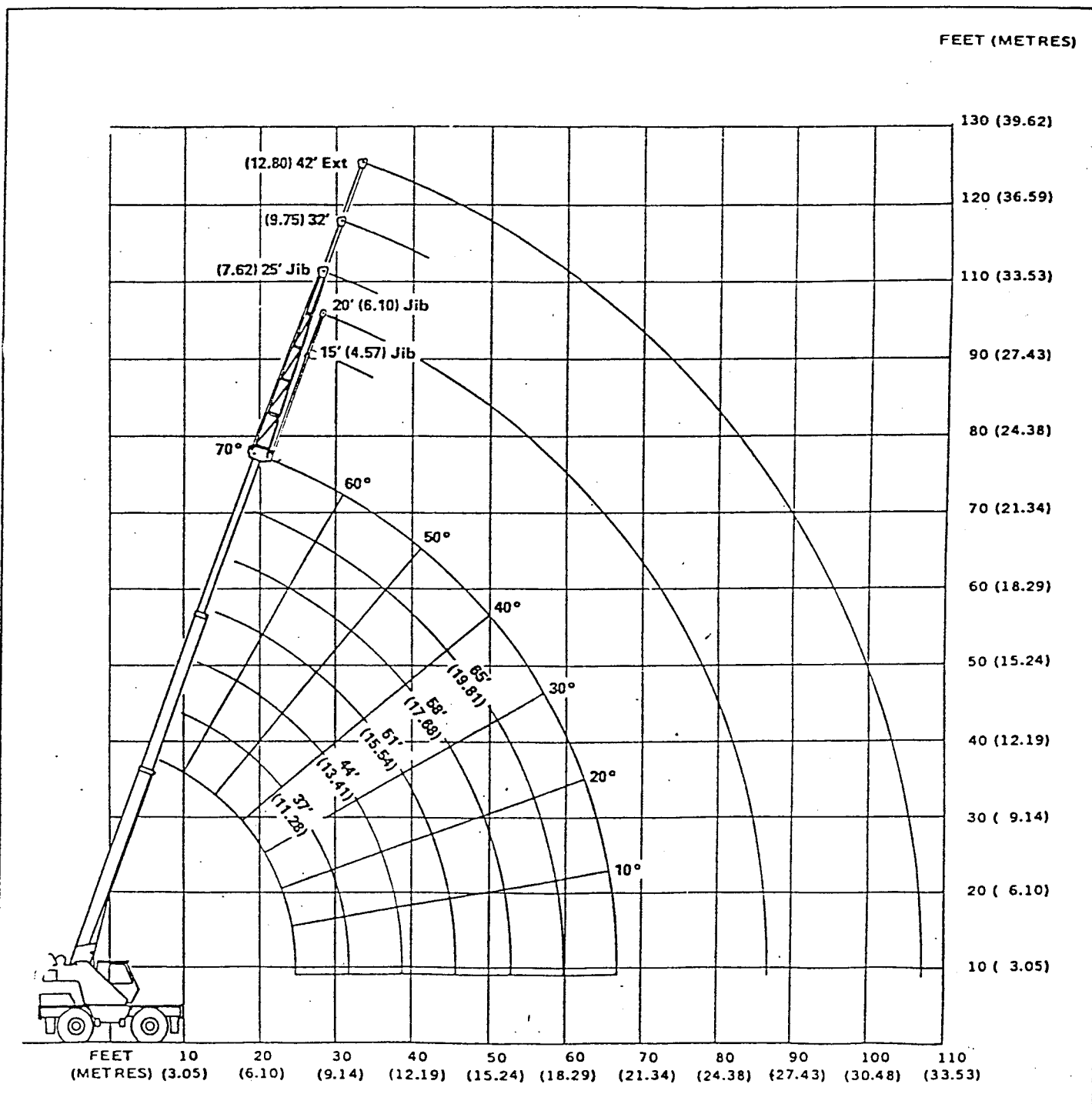
72' ft. (21.9 m) boom

20 Ton R.T. Lorain

6502 - # 6507 # 6512

6506 # 6510

72' Boom 25' Jib 97' Total



Side-Stow Jib Charts

20 Ton R.T. Lorain

6502 # 6507 # 6512

6506 # 6510

72' Boom

25' Jib

97' Total

LRT 180/200 72' BOOM, OUT/DOWN 5100 CWT						
RADIUS	25' LENGTH		32' LENGTH		42' LENGTH	
	L		L		L	
35	70	8,600				
40	67	7,400	68	6,300		
45	64	6,400	65	5,900	69	4,400
50	60	5,300	62	5,200	66	4,100
55	57	4,300	59	4,600	63	3,800
60	53	3,600	55	3,900	60	3,600
65	49	2,900	52	3,200	57	3,400
70	44	2,400	48	2,700	54	3,000
75	38	1,900	44	2,300	51	2,500
80	31	1,500	39	1,900	47	2,100
85	23	1,200	34	1,500	43	1,800
95			18	1,000	33	1,200
100					28	1,000

LRT 150 60' BOOM CURVED BEAM 2800 CWT						
RADIUS	25' LENGTH		32' LENGTH		42' LENGTH	
	L		L		L	
30	70	9,500				
35	67	8,000	70	6,300		
40	64	6,300	67	6,100	70	4,500
45	60	5,100	64	5,400	67	4,300
50	56	4,200	61	4,400	64	3,900
55	51	3,400	57	3,700	61	3,700
60	45	2,750	53	3,100	58	3,400
65	39	2,250	48	2,600	54	2,900
70	31	1,800	41	2,150	49	2,450
75	20	1,450	34	1,800	44	2,100
80	0	1,150	25	1,450	38	1,800
87			0	1,100	29	1,400
97					10	900

LRT 150 60' BOOM OUT/DOWN 2800 LB CWT						
RADIUS	25' LENGTH		32' LENGTH		42' LENGTH	
	L		L		L	
30	70	9,500				
35	67	8,300	70	6,300		
40	64	7,200	67	6,100	70	4,500
45	60	6,000	64	5,700	67	4,300
50	56	5,100	61	5,300	64	3,900
55	51	4,200	57	4,500	61	3,700
60	45	3,500	53	3,800	58	3,400
65	39	2,900	48	3,200	54	3,200
70	31	2,450	41	2,700	49	2,900
75	20	1,950	34	2,250	44	2,500
80	0	1,600	25	1,900	38	2,150
87			0	1,450	29	1,750
97					10	1,200

LRT 180 60' BOOM CURVED BEAM 5100 LB CWT						
RADIUS	25' LENGTH		32' LENGTH		42' LENGTH	
	L		L		L	
30	70	9,500				
35	67	8,300	70	6,300		
40	64	7,200	67	6,100	70	4,500
45	60	5,900	64	5,700	67	4,300
50	56	4,900	61	5,100	64	3,900
55	51	4,000	57	4,300	61	3,700
60	45	3,300	53	3,700	58	3,400
65	39	2,800	48	3,100	54	3,200
70	31	2,300	41	2,650	49	2,900
75	20	1,950	34	2,300	44	2,500
80	0	1,600	25	1,900	38	2,150
87			0	1,450	29	1,700
97					10	1,250

LRT 180/200 60' OUT/DOWN 5100 CWT						
RADIUS	25' LENGTH		32' LENGTH		42' LENGTH	
	L		L		L	
30	70	9,500				
35	67	8,300	70	6,300		
40	64	7,200	67	6,100	70	4,500
45	60	6,300	64	5,700	67	4,300
50	56	5,500	61	5,300	64	3,900
55	51	4,800	57	4,900	61	3,700
60	45	4,100	53	4,600	58	3,400
65	39	3,400	48	3,700	54	3,200
70	31	2,950	41	3,200	49	2,900
75	20	2,450	34	2,750	44	2,700
80	0	2,050	25	2,350	38	2,500
87			0	1,850	29	2,100
97					10	1,600

Stow-Away Jib Capacities (Structural)" for 6' & 72' Boom:

20 Ton Lorain R.T. (C
 # 6502 # 6507 # 6512
 # 6506 # 6510
 72' Boom
 25' Jib
 97' Total

Jib Length Offset	15' Jib		20' Jib	
	0°	28°	0°	28°
Boom Angle				
70°	6,000	6,000	6,000	4,150
50°	6,000	4,800	4,450	3,250
30°	6,000	4,400	3,350	3,000
10°	5,700		3,000	

Stow-Away Jib Capacities" for 45' Boom:

Jib Length Offset	15' JIB	
	0°	28°
Boom Angle		
70°	6,000	4,650
50°	6,000	2,950
30°	4,650	2,750
0°	4,000	

1. Jib capacities are based on strength.
2. Consult portion "with outriggers" of standard chart to determine load at radius to be used.
3. Check angle of jib and determine from above jib capacity chart maximum jib load.
4. Use lesser of these values.